

(CWARD2.CWARD) 17341

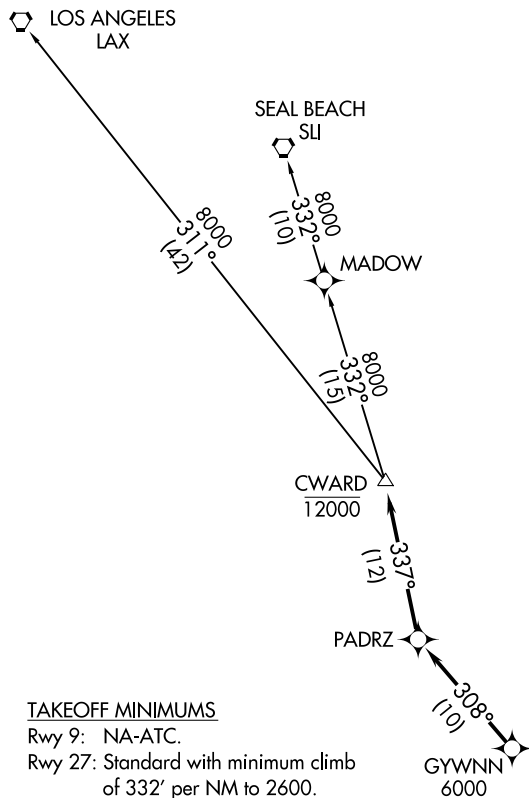
CWARD TWO DEPARTURE (RNAV)

AL-6667 (FAA)

RAMONA (R.NM)
RAMONA, CALIFORNIA

ATIS
132.025
RAMONA TOWER ★
119.875
SOCAL DEP CON
119.6 363.1

**TOP ALTITUDE:
AS ASSIGNED BY ATC**



- NOTE: RADAR required.
- NOTE: RNAV 1.
- NOTE: GPS or DME/DME/IRU required.
- NOTE: Turbojet and turboprop only.
- NOTE: Tower En Route control only.

TAKEOFF MINIMUMS

Rwy 9: NA-ATC.
Rwy 27: Standard with minimum climb of 332' per NM to 2600.

NOTE: Chart not to scale.

DEPARTURE ROUTE DESCRIPTION

TAKEOFF RUNWAY 27: Climb heading 268° to 2600, expect vectors to cross GYWNN at or above 6000, then on track 308° to PADRZ, then on track 337° to cross CWARD at or below 12000, thence. . . .

. . . .on transition. Maintain ATC assigned altitude. Expect filed altitude 10 minutes after departure.

LOS ANGELES TRANSITION (CWARD2.LAX)

SEAL BEACH TRANSITION (CWARD2.SLI)

CWARD TWO DEPARTURE (RNAV)

(CWARD2.CWARD) 07DEC17

RAMONA, CALIFORNIA
RAMONA (R.NM)

SW-3, 22 FEB 2024 to 21 MAR 2024

SW-3, 22 FEB 2024 to 21 MAR 2024

(PADRZ2.PADRZ) 17341

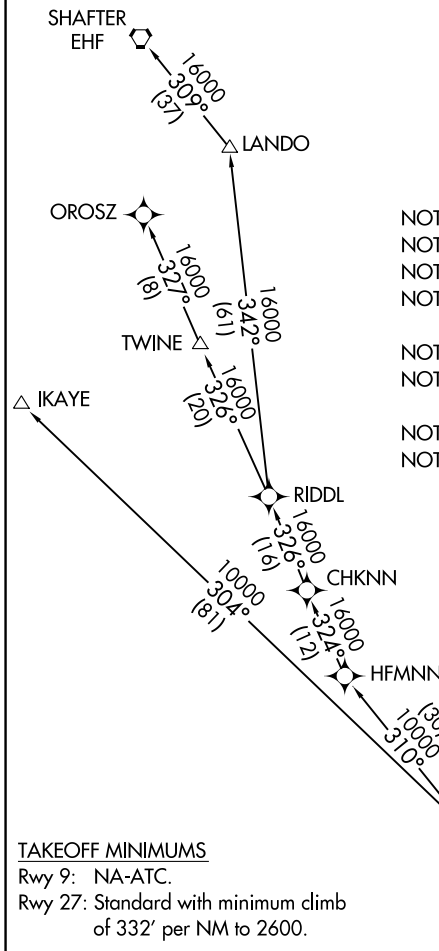
PADRZ TWO DEPARTURE (RNAV)

AL-6667 (FAA)

RAMONA (RNM)
RAMONA, CALIFORNIA

TOP ALTITUDE:
15000

ATIS
132.025
RAMONA TOWER*
119.875
SOCAL DEP CON
119.6 363.1



- NOTE: RNAV 1.
- NOTE: RADAR required.
- NOTE: Turbojets and turboprops only.
- NOTE: CHKNN, SHAFTER, IKAYE, OROSZ TRANSITIONS: DME/DME/IRU or GPS required.
- NOTE: DINTY, MALIT TRANSITIONS: GPS only.
- NOTE: For non-GPS equipped aircraft, Oceanside (OCN) must be operational.
- NOTE: DINTY TRANSITION ATC assigned only.
- NOTE: DINTY and MALIT TRANSITIONS NA from SEE, SDM and RNM airports.

TAKEOFF MINIMUMS

Rwy 9: NA-ATC.
Rwy 27: Standard with minimum climb of 332' per NM to 2600.

NOTE: Chart not to scale.

DEPARTURE ROUTE DESCRIPTION

TAKEOFF RUNWAY 27: Climb heading 268° to 2600, expect vectors to cross GYWNN at or above 8000, then on track 308° to PADRZ, thence. . . .

. . . .on (transition). Maintain 15000. Expect higher altitude 10 minutes after departure.

CHKNN TRANSITION (PADRZ2.CHKNN)

IKAYE TRANSITION (PADRZ2.IKAYE)

ORSZ TRANSITION (PADRZ2.ORSZ)

SHAFTER TRANSITION (PADRZ2.EHF)

PADRZ TWO DEPARTURE (RNAV)

(PADRZ2.PADRZ) 07DEC17

RAMONA, CALIFORNIA
RAMONA (RNM)

SW-3, 22 FEB 2024 to 21 MAR 2024

SW-3, 22 FEB 2024 to 21 MAR 2024