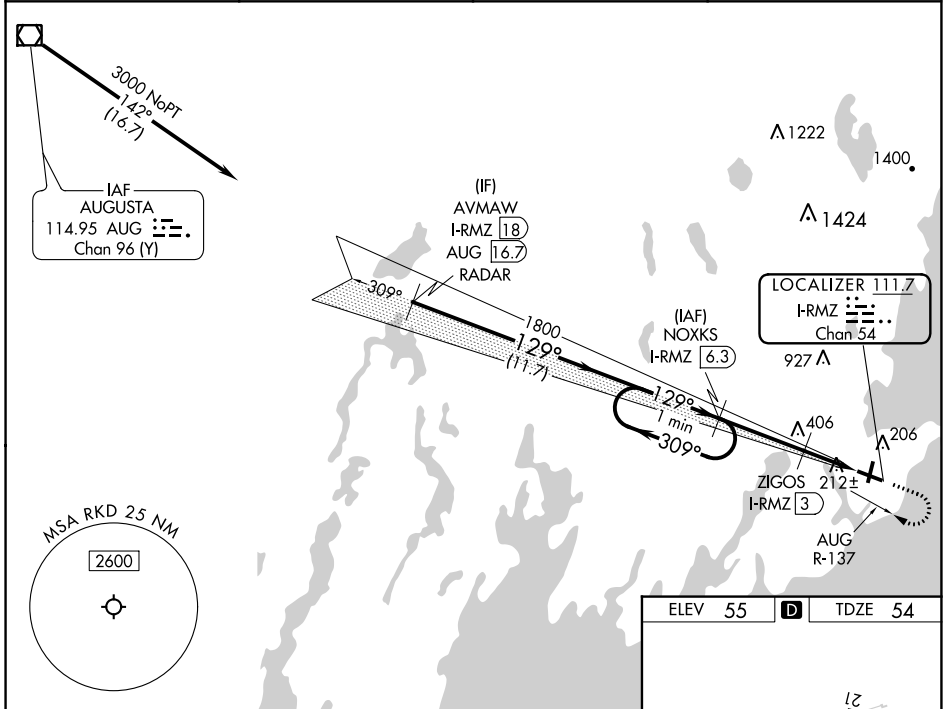


LOC/DME I-RMZ <b>111.7</b> Chan <b>54</b>	APP CRS <b>129°</b>	Rwy Idg <b>5012</b> TDZE <b>54</b> Apt Elev <b>55</b>
---	------------------------	---

# ILS or LOC RWY 13

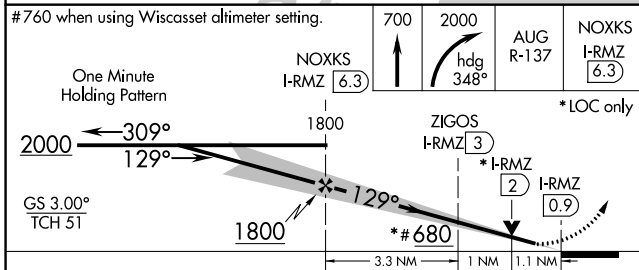
KNOX COUNTY RGNL (R.KD)

DME required.			MISSED APPROACH: Climb to 700 then climbing right turn to 2000 on heading 348° and on AUG R-137 to NOXKS/I-RMZ 6.3 DME and hold.
VDP NA when using Wiscasset altimeter setting. When local altimeter setting not received, use Wiscasset altimeter setting and increase all DA to 319 feet and all MDA 80 feet, increase S-LOC 13 Cats C/D visibility 3/8 SM and Circling Cat C 1/2 SM. For inop ALS when using Wiscasset altimeter setting increase S-ILS 13 all Cats visibility to 3/8 SM and S-LOC 13 Cats C/D to 1 3/8 SM.			
AWOS-3PT <b>119.025</b>	PORTLAND APP CON* <b>120.4 299.2</b>	CLNC DEL <b>123.8</b>	UNICOM <b>123.05 (CTAF)</b>

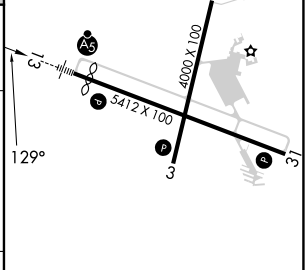


NE-1, 22 FEB 2024 to 21 MAR 2024

NE-1, 22 FEB 2024 to 21 MAR 2024



ELEV 55	<b>D</b>	TDZE 54
---------	----------	---------



CATEGORY	A	B	C	D
S-ILS 13		254-1/2	200 (200-1/2)	
S-LOC 13	440-1/2 386 (400-1/2)		440-5/8 386 (400-5/8)	
<b>C</b> CIRCLING	580-1 525 (600-1)		720-1 3/4 665 (700-1 3/4)	1140-3 1085 (1100-3)

REIL Rwy 3 and 31 **L**  
MIRL Rwy 3-21 **L**  
HIRL Rwy 13-31 **L**

WAAS CH <b>48940</b>	APP CRS <b>129°</b>	Rwy Idg TDZE Apt Elev	<b>5012</b> <b>54</b> <b>55</b>
<b>W13A</b>			

# RNAV (GPS) RWY 13

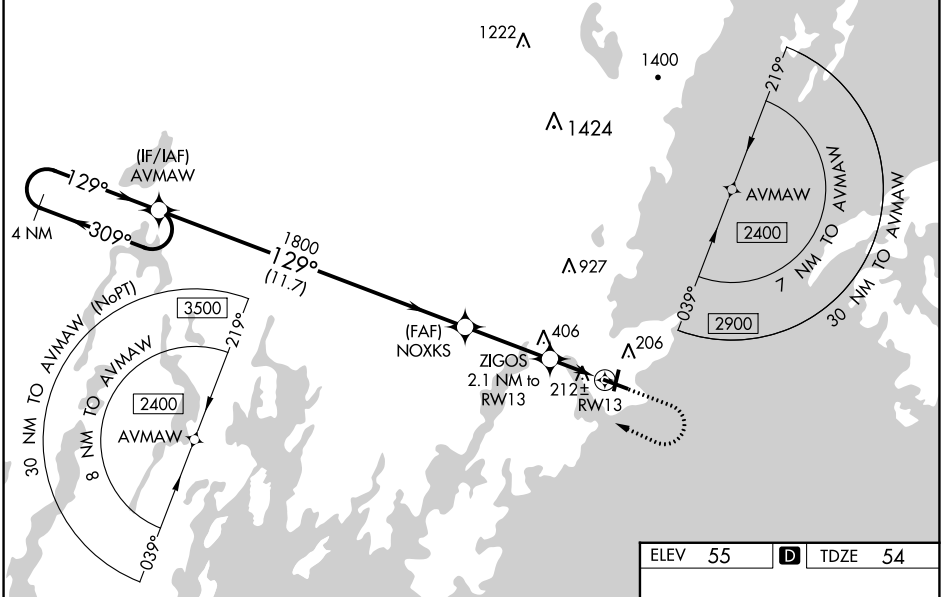
KNOX COUNTY RGNL (RKD)

**▼** DME/DME RNP -0.3 NA. VDP and Baro-VNAV NA when using Wiscasset altimeter setting. When local altimeter setting not received, use Wiscasset altimeter setting and increase LPV DA to 319 feet, LNAV/VNAV DA to 467 feet and all MDA 80 feet. Increase LNAV/VNAV visibility all Cats to 1 SM, LNAV Cat C/D to 1 SM and Circling Cat C to 2 1/4 SM. For inop ALS increase LNAV/VNAV all Cats visibility to 1 1/8 SM. For inop ALS when using Wiscasset altimeter setting increase LPV all Cats visibility to 7/8 SM, LNAV/VNAV all Cats visibility to 1 3/8 SM and LNAV Cat C/D to 1 3/8 SM. For uncompensated Baro-VNAV systems, LNAV/VNAV NA below -15°C (5°F) or above 54°C (130°F).

**MALSRL**

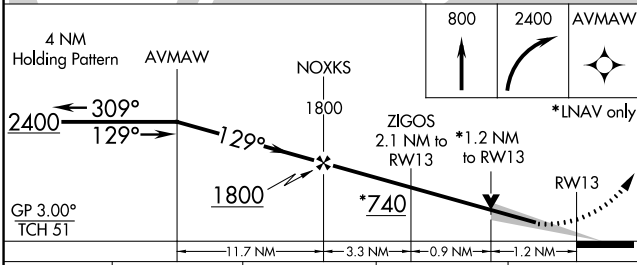
**MISSED APPROACH:**  
Climb to 800 then climbing right turn to 2400 direct AVMAW and hold.

AWOS-3PT <b>119.025</b>	PORTLAND APP CON* <b>120.4 299.2</b>	CLNC DEL <b>123.8</b>	UNICOM <b>123.05 (CTAF)</b>
----------------------------	---	--------------------------	--------------------------------



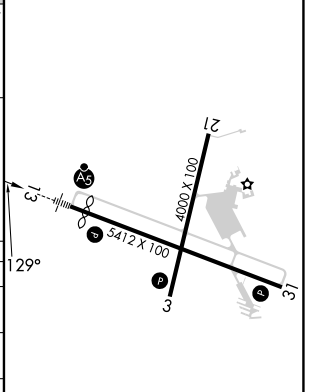
NE-1, 22 FEB 2024 to 21 MAR 2024

NE-1, 22 FEB 2024 to 21 MAR 2024



ELEV 55	<b>D</b> TDZE 54
---------	------------------

CATEGORY	A	B	C	D
LPV DA		254-1/2	200 (200-1/2)	
LNAV/VNAV DA		402-3/4	348 (400-3/4)	
LNAV MDA	480-1/2	426 (500-1/2)	480-3/4	426 (500-3/4)
<b>C</b> CIRCLING	580-1	525 (600-1)	720-1 3/4 665 (700-1 3/4)	1140-3 1085 (1100-3)



REIL Rws 3 and 31 **Ⓛ**  
MIRL Rwy 3-21 **Ⓛ**  
HIRL Rwy 13-31 **Ⓛ**

WAAS CH <b>40210</b> <b>W03A</b>	APP CRS <b>031°</b>	Rwy Idg TDZE Apt Elev	<b>4000</b> <b>54</b> <b>55</b>
--	------------------------	-----------------------------	---------------------------------------

# RNAV (GPS) RWY 3

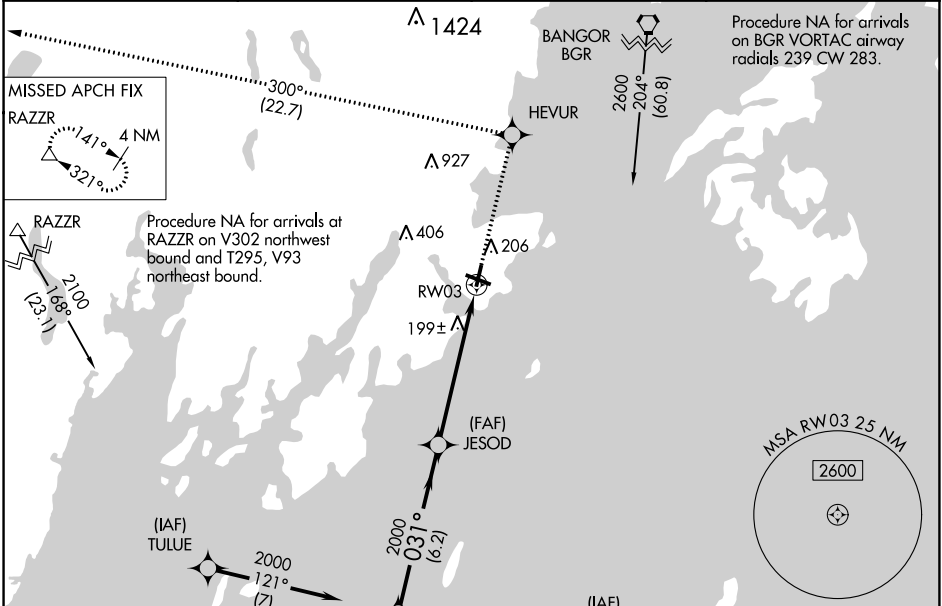
KNOX COUNTY RGNL (R.KD)

RNP APCH.

**⚠** Rwy 3 helicopter visibility reduction below 3/4 SM NA.  
**⚠** For uncompensated Baro-VNAV systems,  
 LNAV/VNAV NA below -15°C or above 54°C.

MISSED APPROACH: Climb to 3000 direct HEVUR and on track 300° to RAZZR and hold.

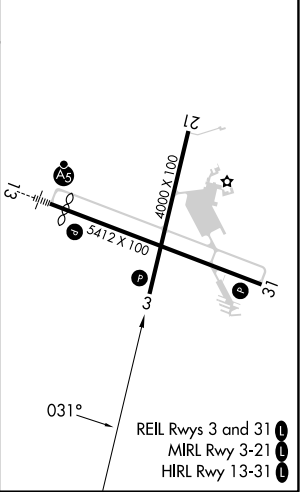
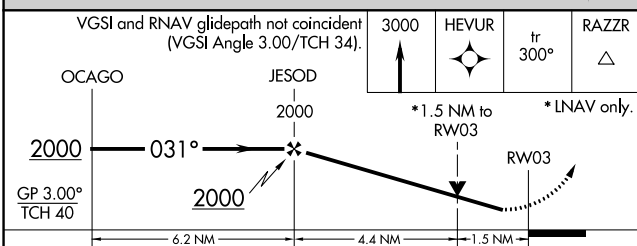
AWOS-3PT <b>119.025</b>	PORTLAND APP CON★ <b>120.4 299.2</b>	CLNC DEL <b>123.8</b>	UNICOM <b>123.05</b> (CTAF) <b>📻</b>
----------------------------	---	--------------------------	---



NE-1, 22 FEB 2024 to 21 MAR 2024

NE-1, 22 FEB 2024 to 21 MAR 2024

ELEV 55	<b>D</b>	TDZE 54
---------	----------	---------



CATEGORY	A	B	C	D
LPV DA	374-1 1/4 320 (400-1 1/4)			
LNAV/VNAV DA	459-1 1/2 405 (500-1 1/2)			
LNAV MDA	560-1 506 (600-1)	560-1 506 (600-1 1/2)	560-1 506 (600-1 1/2)	560-1 506 (600-1 1/2)
<b>C</b> CIRCLING	600-1 545 (600-1)	720-1 3/4 665 (700-1 3/4)	1140-3 1085 (1100-3)	

APP CRS	Rwy Idg	<b>5412</b>
<b>309°</b>	TDZE	<b>55</b>
	Apt Elev	<b>55</b>

# RNAV (GPS) RWY 31

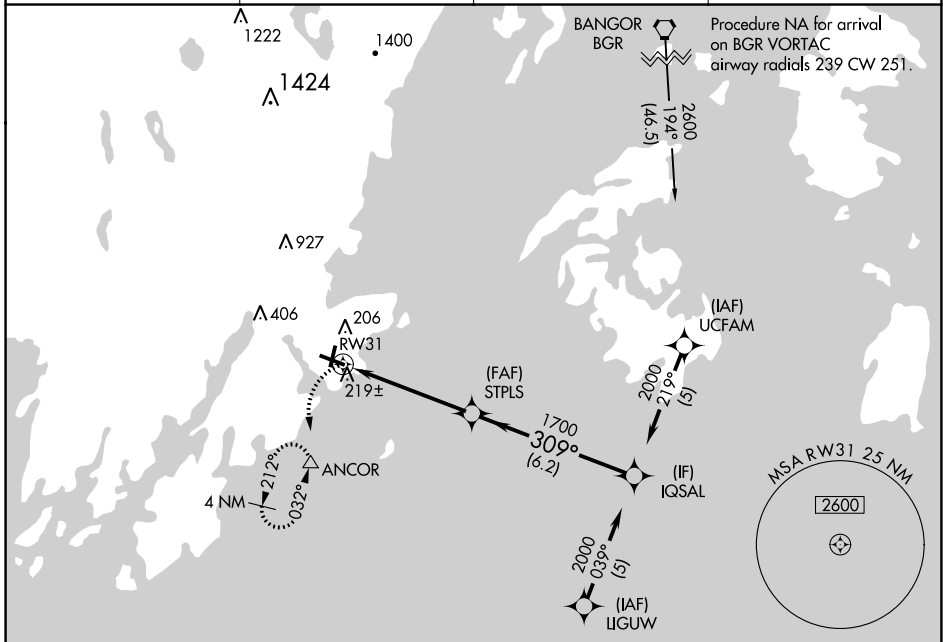
KNOX COUNTY RGNL (R.KD)

RNP APCH.

**▽**  
**▲** Rwy 31 helicopter visibility reduction below ¾ SM NA.

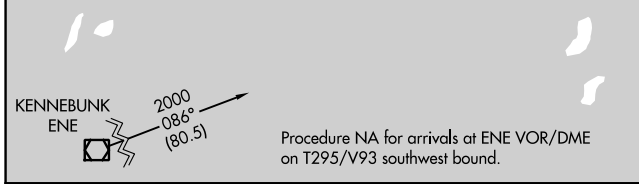
MISSED APPROACH: Climbing left turn to 2000 direct ANCOR and hold, continue climb-in-hold to 2000.

AWOS-3PT <b>119.025</b>	PORTLAND APP CON ★ <b>120.4 299.2</b>	CLNC DEL <b>123.8</b>	UNICOM <b>123.05 (CTAF)</b> <b>📻</b>
----------------------------	--	--------------------------	---

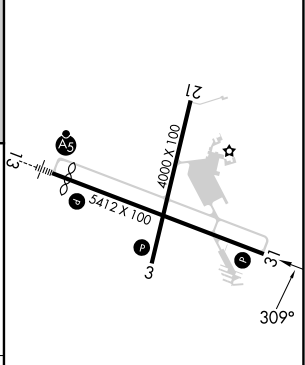
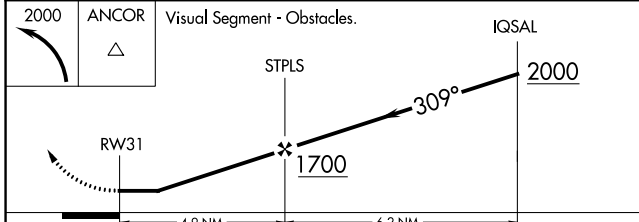


NE-1, 22 FEB 2024 to 21 MAR 2024

NE-1, 22 FEB 2024 to 21 MAR 2024



ELEV	55	<b>D</b>	TDZE	55
------	----	----------	------	----



CATEGORY	A	B	C	D
LNVA MDA	480-1	425 (500-1)	480-1¼	425 (500-1¼)
<b>C</b> CIRCLING	580-1	525 (600-1)	720-1¾ 665 (700-1¾)	1140-3 1085 (1100-3)

- REIL Rwy 3 and 31 **📻**
- MIRL Rwy 3-21 **📻**
- HIRL Rwy 13-31 **📻**