

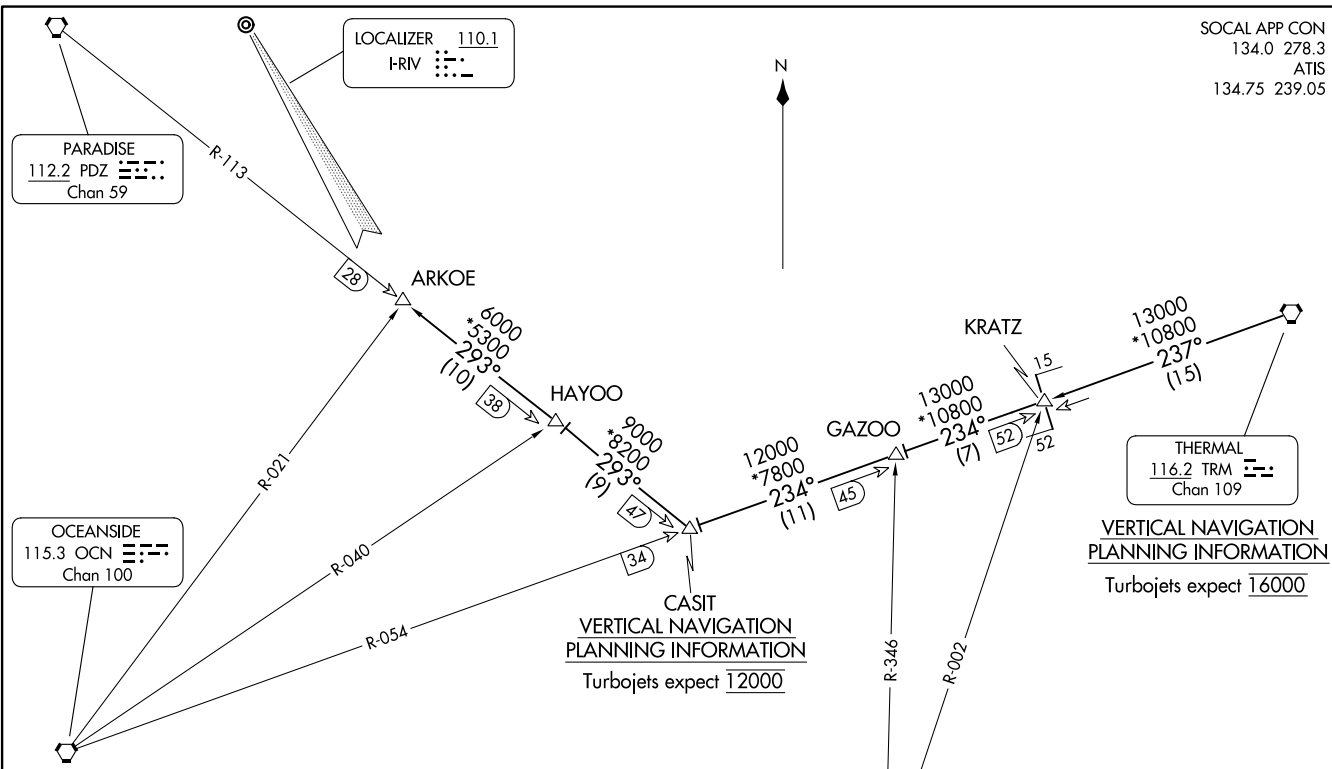
SOCAL APP CON  
134.0 278.3  
ATIS  
134.75 239.05

(ARKOE:ARKOE1) 23334  
ARKOE ONE ARRIVAL

AL-348 (FAA)

MARCH ARR (KRITV)  
RIVERSIDE, CALIFORNIA

ARKOE ONE ARRIVAL  
(ARKOE:ARKOE1) 05APR12



**VERTICAL NAVIGATION  
PLANNING INFORMATION**  
Turbojets expect 16000

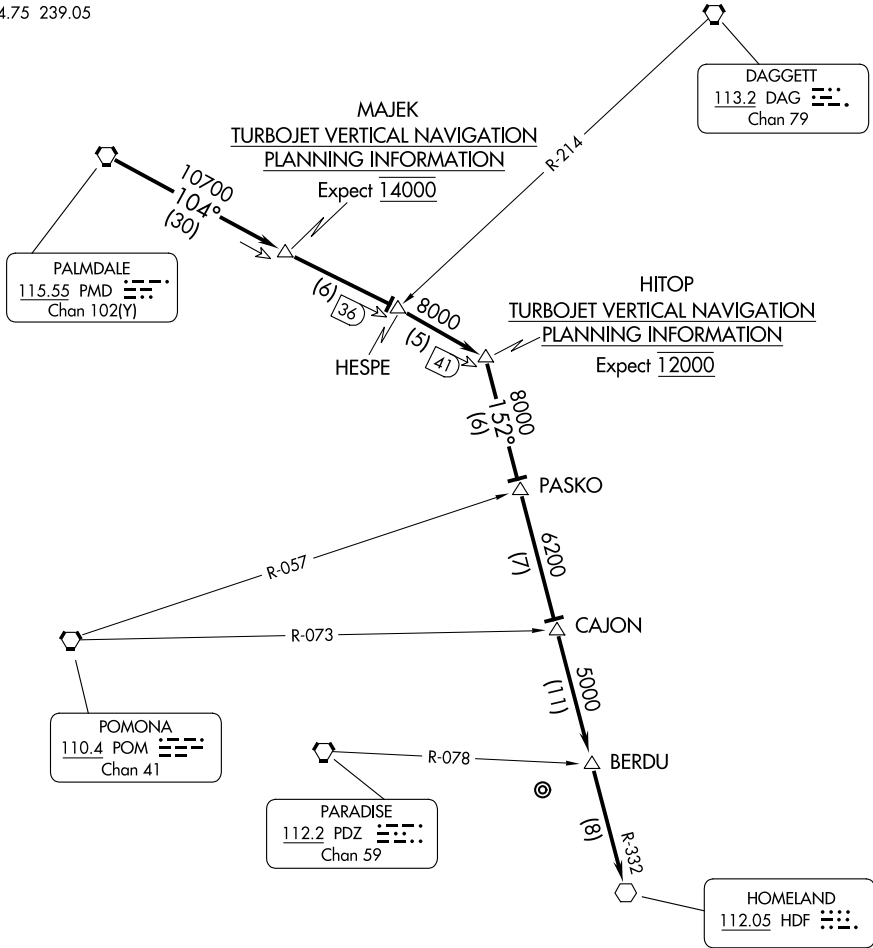
**CASIT  
VERTICAL NAVIGATION  
PLANNING INFORMATION**  
Turbojets expect 12000

**ARRIVAL ROUTE DESCRIPTION**

**THERMAL TRANSITION (TRM.ARKOE1):** From over TRM VORTAC on TRM R-237 to KRATZ INT, then on OCN R-054 and PDZ R-113 to ARKOE INT.  
From over ARKOE INT expect to intercept the localizer for an ILS Y or LOC RWY 32 or vector VOR/TACAN RWY 32.

NOTE: DME required.  
NOTE: Chart not to scale.

MARCH APP CON \*  
133.5 324.1  
ATIS  
134.75 239.05



SW-3, 22 FEB 2024 to 21 MAR 2024

SW-3, 22 FEB 2024 to 21 MAR 2024

NOTE: VOR equipped aircraft only.

NOTE: Chart not to scale.

### ARRIVAL ROUTE DESCRIPTION

From over PMD VORTAC via PMD R-104 to HITOP INT. Thence via HDF R-332 to HDF VOR. Expect VOR approach or vector to intercept ILS Rwy 32.