

LOC I-FTR 108.3	APP CRS 260°	Rwy ldg 10496
		TDZE 4659
		Apt Elev 4729

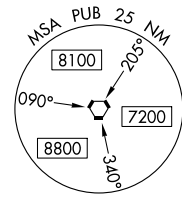
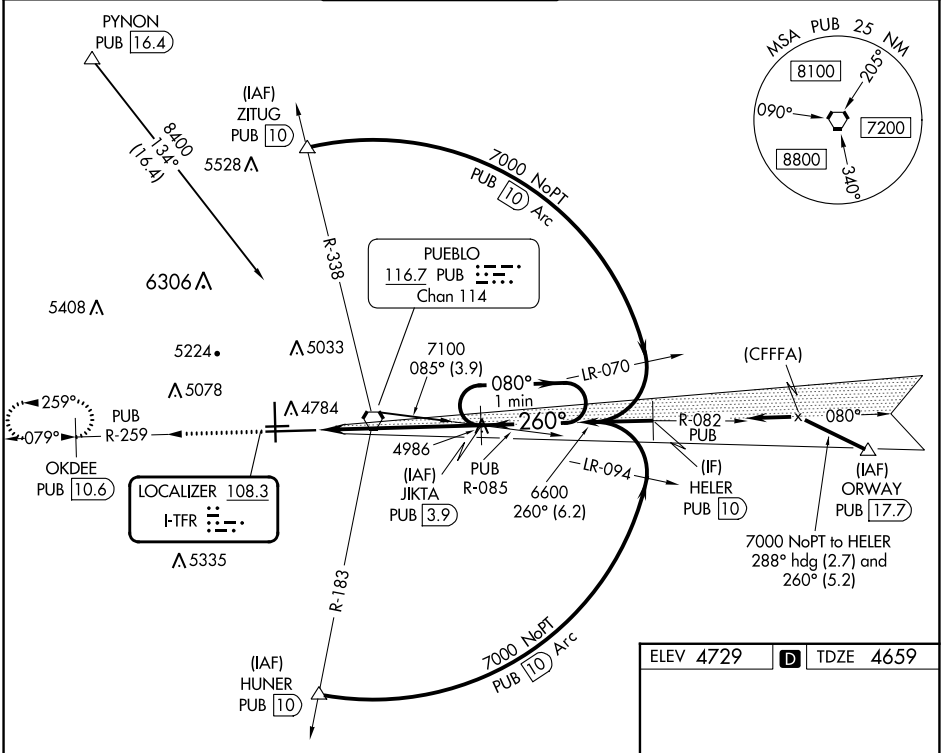
ILS or LOC RWY 26L

PUEBLO MEML (PUB)

DME required. RADAR required for procedure entry at PYNON.

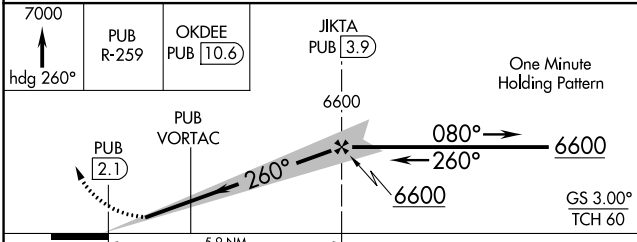
MISSED APPROACH: Climb to 7000 on heading 260° and on PUB VORTAC R-259 to OKDEE/PUB 10.6 DME and hold.

ATIS 125.25	DENVER APP CON ★ 120.1 290.5	PUEBLO TOWER ★ 119.1 (CTAF) 257.8	GND CON 121.9	CLNC DEL 120.9	UNICOM 122.95
-----------------------	--	---	-------------------------	--------------------------	-------------------------

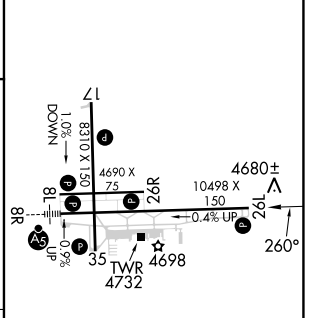


SW-1, 22 FEB 2024 to 21 MAR 2024

SW-1, 22 FEB 2024 to 21 MAR 2024



ELEV 4729	TDZE 4659
-----------	-----------



CATEGORY	A	B	C	D
S-ILS 26L	4859-3/4 200 (200-3/4)			
S-LOC 26L	5160-1	501 (500-1)	5160-1 3/8	501 (500-1 3/8)
CIRCLING	5340-1	611 (700-1)	5580-2 1/2 851 (900-2 1/2)	5800-3 1071 (1100-3)

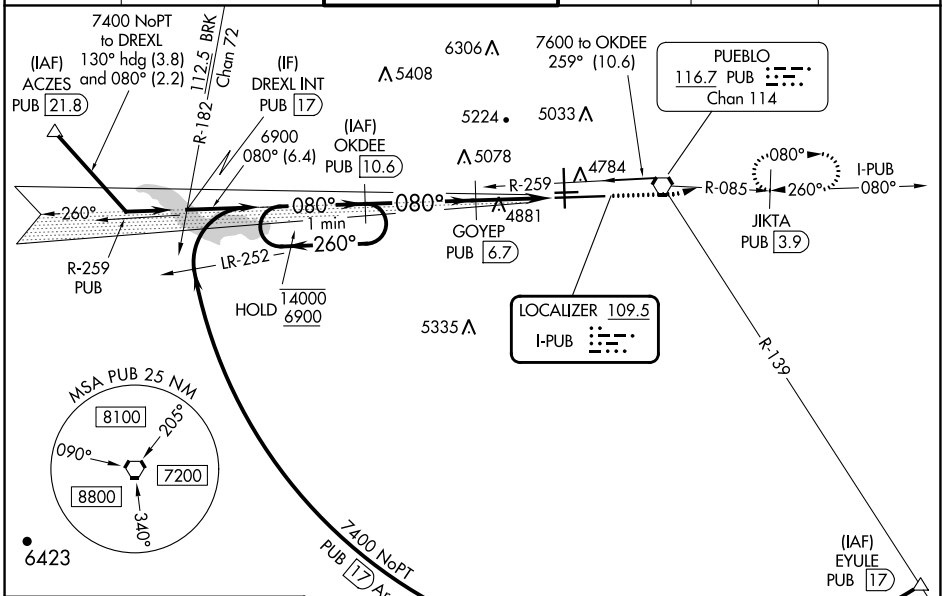
HIRL Rwy 8R-26L
 MIRL Rws 17-35 and 8L-26R
 REIL Rws 8L, 17, 26L, 26R and 35

LOC I-PUB 109.5	APP CRS 080°	Rwy Idg 1049E TDZE 4671 Apt Elev 4729
---------------------------	------------------------	--

ILS or LOC RWY 8R

PUEBLO MEML (PUB)

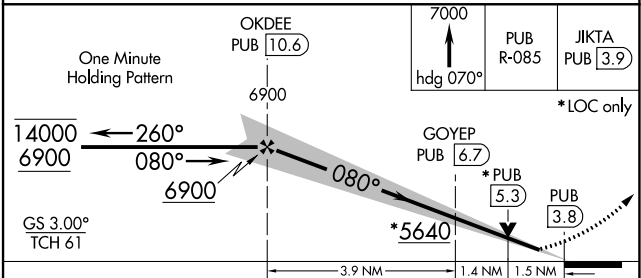
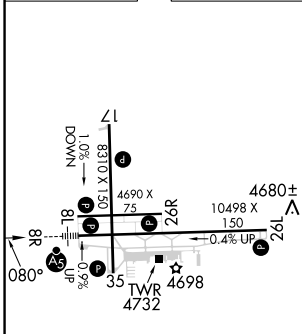
DME required.			MISSED APPROACH: Climb to 7000 on heading 070° and on PUB VORTAC R-085 to JIKTA/PUB 3.9 DME and hold, continue climb-in-hold to 7000.				
Circling NA for Cat E west of Rwy 17-35. Autopilot coupled approach NA below 4950. Procedure turn NA for Cat E aircraft. DME from PUB VORTAC, simultaneous reception of I-PUB and PUB DME required. For inop ALS, increase S-ILS 8R Cat E visibility to 3/4 SM and S-LOC 8R Cat E visibility to 1 1/2 SM.			ATIS 125.25	DENVER APP CON ★ 120.1 290.5	PUEBLO TOWER ★ 119.1 (CTAF) 257.8	GND CON 121.9	CLNC DEL 120.9



SW-1, 22 FEB 2024 to 21 MAR 2024

SW-1, 22 FEB 2024 to 21 MAR 2024

ELEV 4729 **D** TDZE 4671



HIRL Rwy 8R-26L
MIRL Rwy 17-35 and 8L-26R
REIL Rwy 8L, 17, 26L, 26R and 35

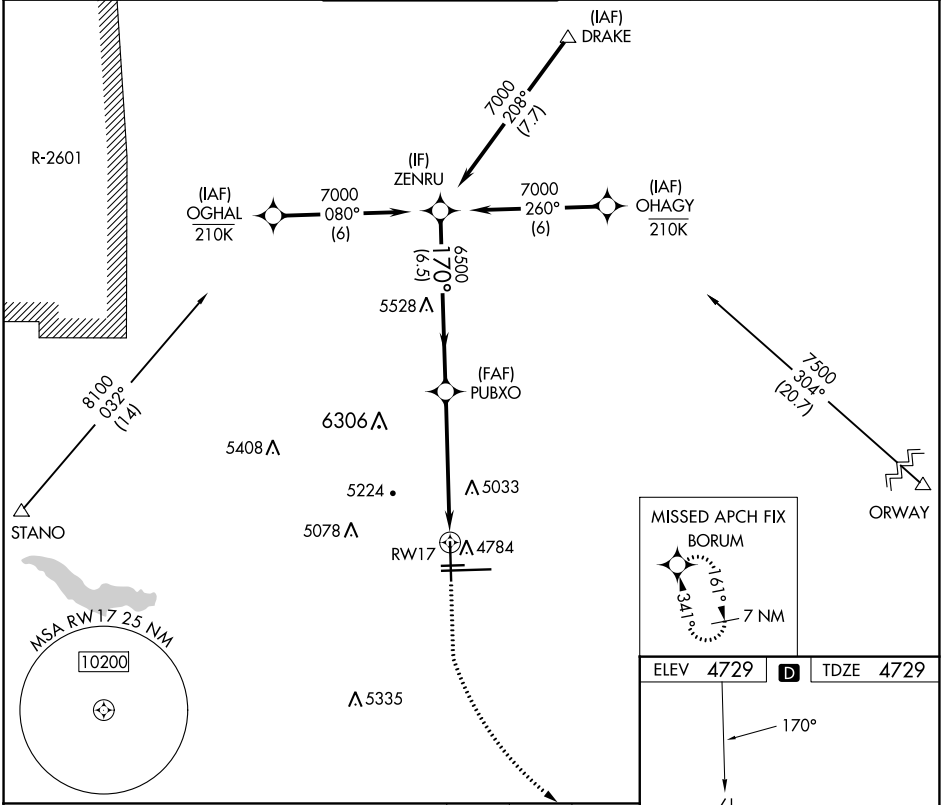
CATEGORY	A	B	C	D	E
S-ILS 8R	4871-1/2 200 (200-1/2)				
S-LOC 8R	5200-1/2 529 (500-1/2)		5200-1 529 (500-1)		
C CIRCLING	5340-1 611 (700-1)		5580-2 1/2 851 (900-2 1/2)		5800-3 1071 (1100-3)

APP CRS 170°	Rwy Idg TDZE Apt Elev	8308 4729 4729
------------------------	-----------------------------	---

RNAV (GPS) RWY 17

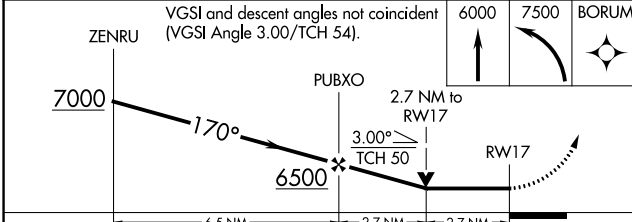
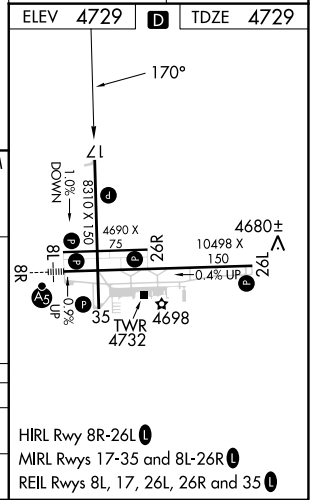
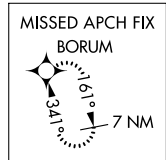
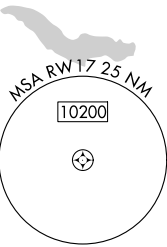
PUEBLO MEML (PUB)

RNP APCH-GPS.		MISSED APPROACH: Climb to 6000 then climbing left turn to 7500 direct BORUM and hold.			
ATIS 125.25	DENVER APP CON ★ 120.1 290.5	PUEBLO TOWER ★ 119.1 (CTAF) 257.8	GND CON 121.9	CLNC DEL 120.9	UNICOM 122.95



SW-1, 22 FEB 2024 to 21 MAR 2024

SW-1, 22 FEB 2024 to 21 MAR 2024



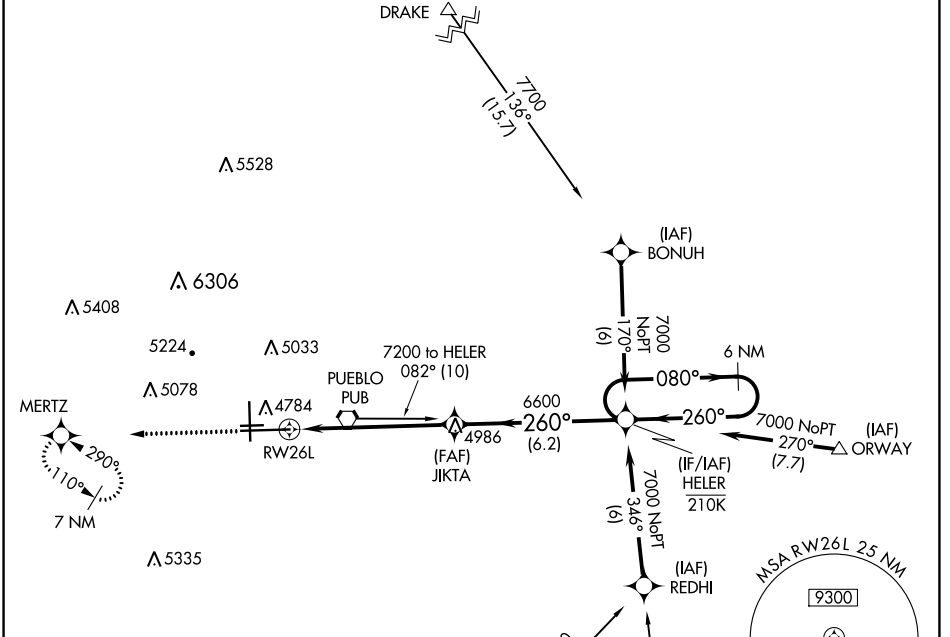
CATEGORY	A	B	C	D
LNVA MDA	5640-1¼	911 (1000-1¼)	5640-2½	911 (1000-2½)
CIRCLING	5640-1¼	911 (1000-1¼)	5640-2¾ 911 (1000-2¾)	5800-3 1071 (1100-3)

WAAS CH 53531 W26A	APP CRS 260°	Rwy Idg 10496 TDZE 4659 Apt Elev 4729
--	------------------------	--

RNAV (GPS) RWY 26L

PUEBLO MEML (PUB)

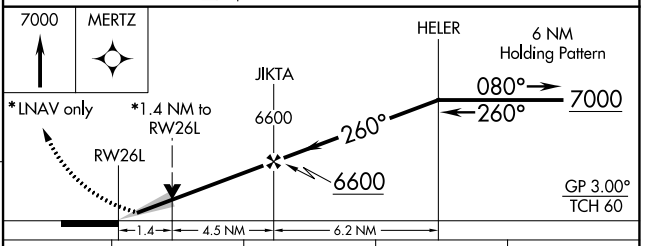
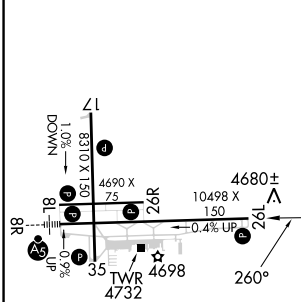
RNP APCH-GPS.			MISSED APPROACH: Climb to 7000 direct MERTZ and hold.		
⚠ For uncompensated Baro-VNAV systems, LNAV/VNAV NA below -22°C or above 54°C.					
ATIS 125.25	DENVER APP CON ★ 120.1 290.5	PUEBLO TOWER ★ 119.1 (CTAF) 0 257.8	GND CON 121.9	CLNC DEL 120.9	UNICOM 122.95



SW-1, 22 FEB 2024 to 21 MAR 2024

SW-1, 22 FEB 2024 to 21 MAR 2024

ELEV 4729	D TDZE 4659
-----------	--------------------



CATEGORY	A	B	C	D
LPV DA	4859-3/4		200 (200-3/4)	
LNAV/VNAV DA	4979-1		320 (300-1)	
LNAV MDA	5100-1	441 (400-1)	5100-1 3/8	441 (400-1 3/8)
C CIRCLING	5340-1	611 (700-1)	5580-2 1/2	5800-3 851 (900-2 1/2)

HIRL Rwy 8R-26L
MIRL Rwy 17-35 and 8L-26R
REIL Rwy 8L, 17, 26L, 26R and 35 L

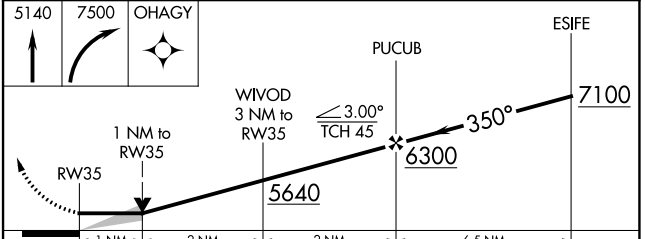
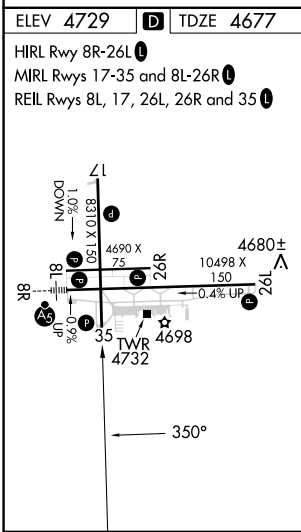
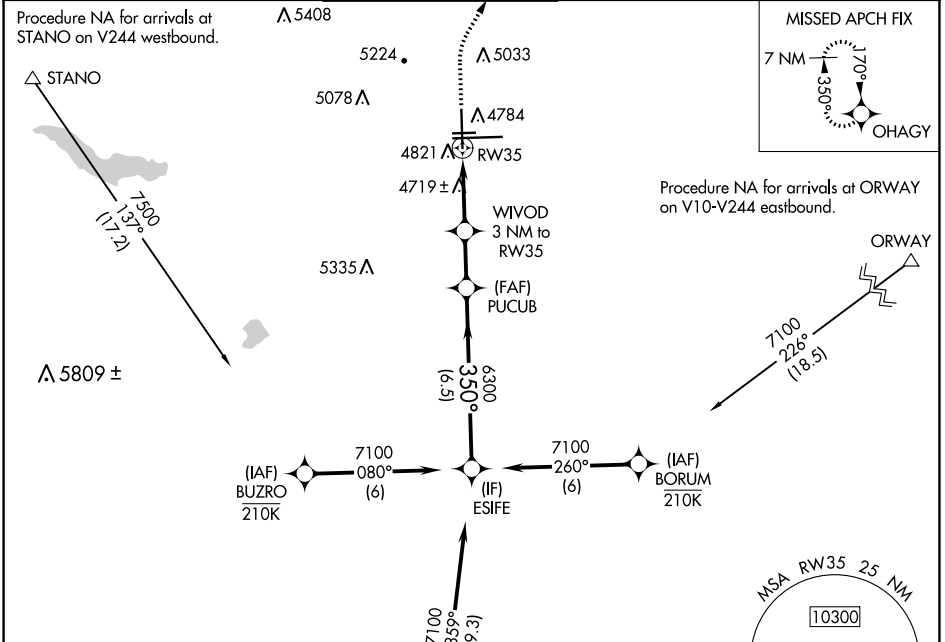
WAAS CH 42721 W35A	APP CRS 350°	Rwy Idg TDZE Apt Elev	8308 4677 4729
--	------------------------	-----------------------------	---

RNAV (GPS) RWY 35

PUEBLO MEML (PUB)

RNP APCH-GPS.		MISSED APPROACH: Climb to 5140 then climbing right turn to 7500 direct OHAGY and hold.			
---------------	--	--	--	--	--

ATIS 125.25	DENVER APP CON * 120.1 290.5	PUEBLO TOWER * 119.1 (CTAF) 0 257.8	GND CON 121.9	CLNC DEL 120.9	UNICOM 122.95
-----------------------	--	---	-------------------------	--------------------------	-------------------------



CATEGORY	A	B	C	D
LP MDA	5020-1 343 (300-1)			
LNAV MDA	5120-1 443 (400-1)	5120-1½ 443 (400-1½)		
CIRCLING	5340-1 611 (700-1)	5580-2½ 851 (900-2½)	5800-3 1071 (1100-3)	

SW-1, 22 FEB 2024 to 21 MAR 2024

SW-1, 22 FEB 2024 to 21 MAR 2024

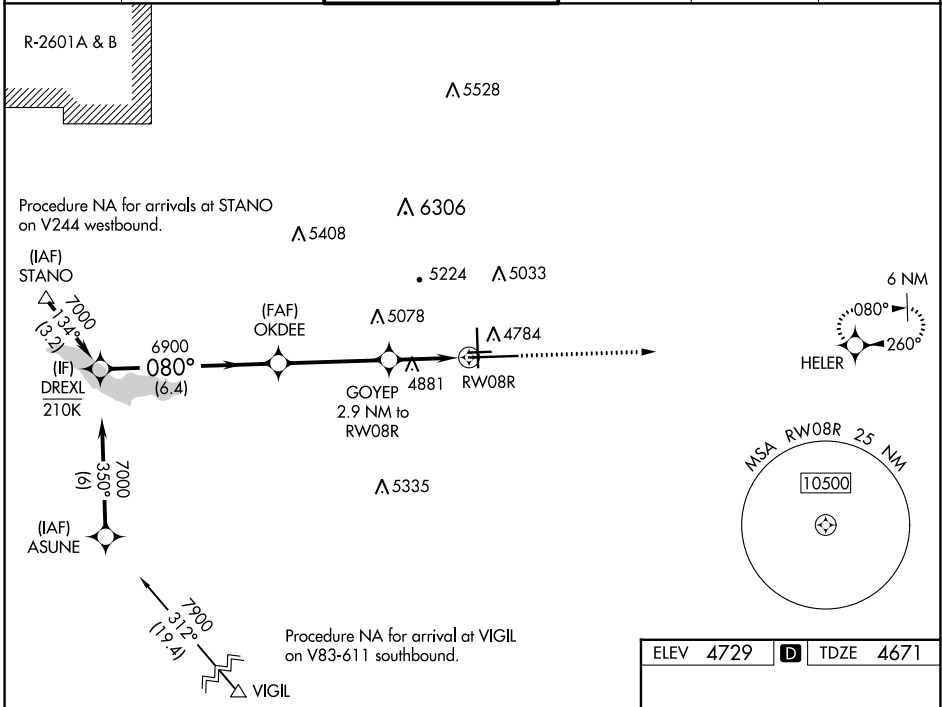
WAAS CH 70531 W08A	APP CRS 080°	Rwy Idg TDZE Apt Elev	10496 4671 4729
--	------------------------	-----------------------------	--

RNAV (GPS) RWY 8R

PUEBLO MEML (PUB)

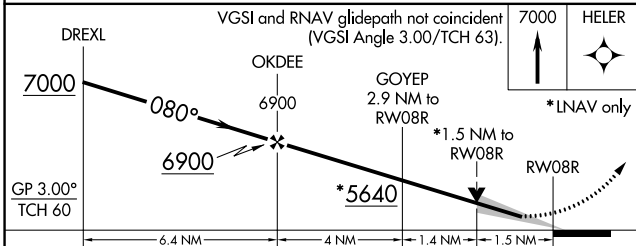
RNP APCH-GPS.		MALSR	MISSED APPROACH: Climb to 7000 direct HELER and hold.		
<p>▼ For uncompensated Baro-VNAV systems, LNAV/VNAV NA below -22°C or above 54°C. For inop ALS, increase LNAV/VNAV visibility to 7/8 SM.</p>					

ATIS 125.25	DENVER APP CON ★ 120.1 290.5	PUEBLO TOWER ★ 119.1 (CTAF) 0 257.8	GND CON 121.9	CLNC DEL 120.9	UNICOM 122.95
-----------------------	--	---	-------------------------	--------------------------	-------------------------

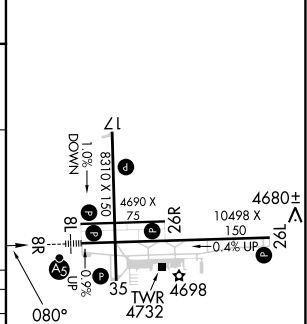


SW-1, 22 FEB 2024 to 21 MAR 2024

SW-1, 22 FEB 2024 to 21 MAR 2024



ELEV 4729	D	TDZE 4671
-----------	---	-----------



CATEGORY	A	B	C	D
LPV DA	4871-1/2		200 (200-1/2)	
LNAV/VNAV DA	4982-1/2		311 (300-1/2)	
LNAV MDA	5200-1/2	529 (500-1/2)	5200-1	529 (500-1)
CIRCLING	5340-1	611 (700-1)	5580-2 1/2 851 (900-2 1/2)	5800-3 1071 (1100-3)

HIRL Rwy 8R-26L

MIRL Rws 17-35 and 8L-26R

REIL Rws 8L, 17, 26L, 26R and 35

VORTAC PUB 116.7 Chan 114	APP CRS 252°	Rwy ldg 10496 TDZE 4659 Apt Elev 4729
---	------------------------	--

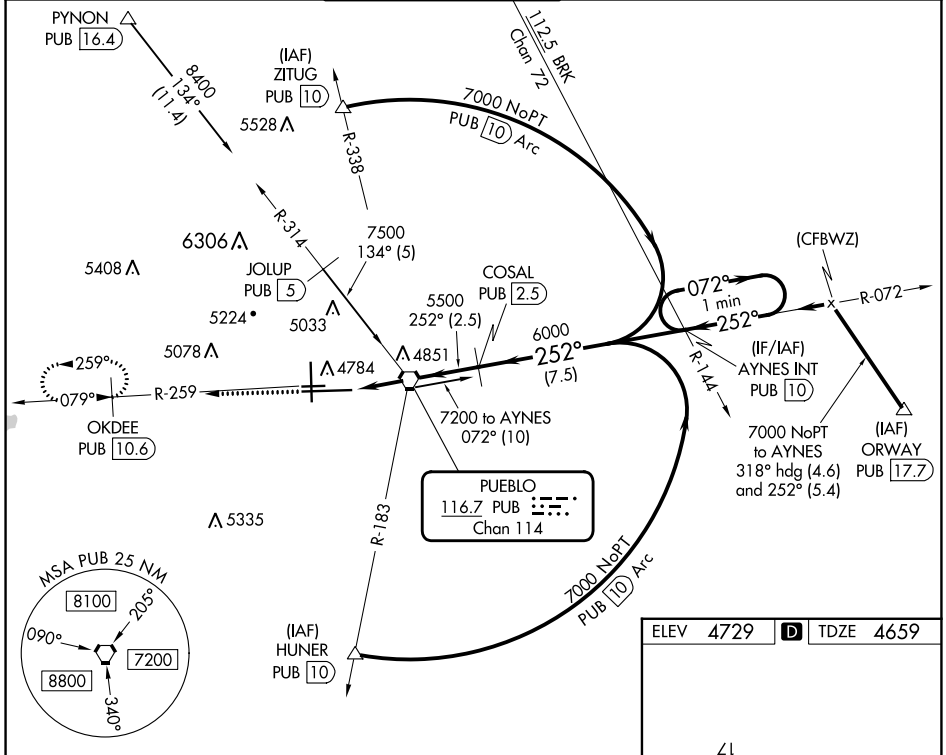
VOR RWY 26L

PUEBLO MEML (PUB)

DME required. RADAR required for procedure entry at PYNON.

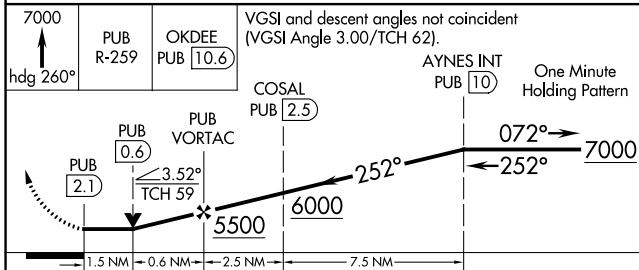
MISSED APPROACH: Climb to 7000 on heading 260° and on PUB VORTAC R-259 to OKDEE/PUB 10.6 DME and hold.

ATIS 125.25	DENVER APP CON ★ 120.1 290.5	PUEBLO TOWER ★ 119.1 (CTAF) 0 257.8	GND CON 121.9	CLNC DEL 120.9	UNICOM 122.95
-----------------------	--	---	-------------------------	--------------------------	-------------------------

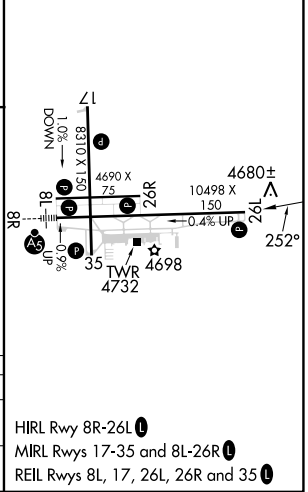


SW-1, 22 FEB 2024 to 21 MAR 2024

SW-1, 22 FEB 2024 to 21 MAR 2024



ELEV 4729	D	TDZE 4659
-----------	---	-----------



CATEGORY	A	B	C	D
S-26L	5120-1	461 (400-1)	5120-1 ³ / ₈ 461 (400-1 ³ / ₈)	NA
CIRCLING	5340-1	611 (700-1)		NA