

APP CRS	Rwy ldg	<b>4381</b>
<b>174°</b>	TDZE	<b>897</b>
	Apt Elev	<b>898</b>

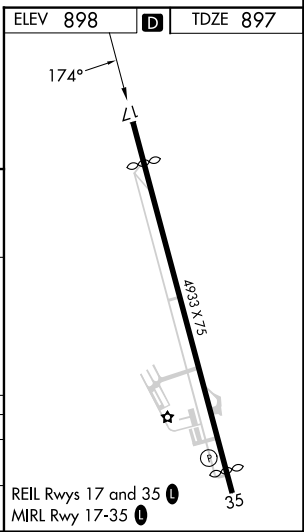
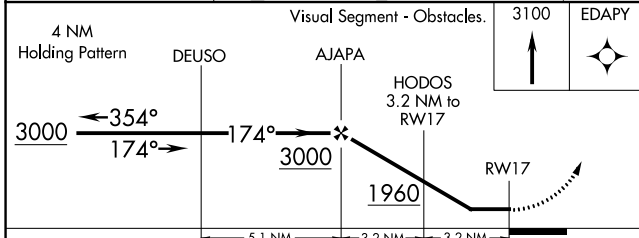
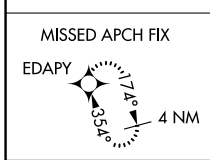
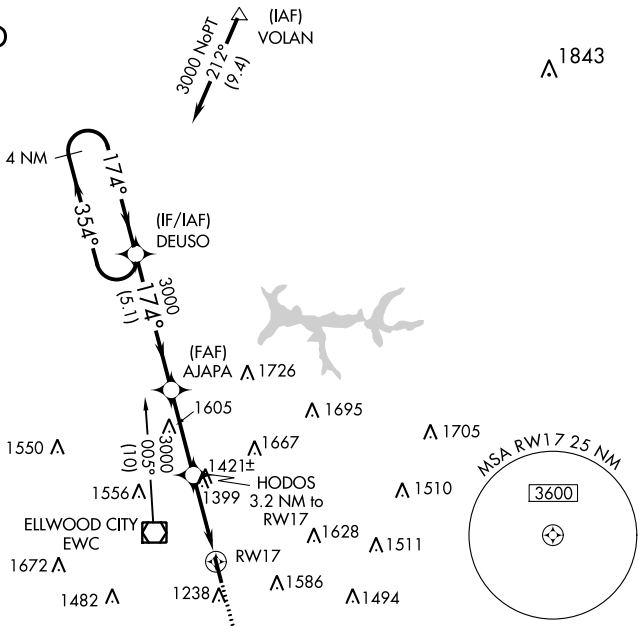
# RNAV (GPS) RWY 17

ZELIENOPLE MUNI (PJC)

RNP APCH.	MISSED APPROACH: Climb to 3100 direct EDAPY and hold.
<p>▼ Rwy 17 helicopter visibility reduction below 1 SM NA.</p> <p>▲ NA Procedure NA at night.</p>	

AWOS-3PT <b>118.45</b>	PITTSBURGH APP CON <b>124.75 338.2</b>	CTAF <b>122.9</b>
---------------------------	---	----------------------

## RADAR REQUIRED



CATEGORY	A	B	C	D
LNVA MDA	1680-1 783 (800-1)	1680-1¼ 783 (800-1¼)		NA
CIRCLING	1680-1 782 (800-1)	1700-1¼ 802 (900-1¼)		NA

NE-4, 22 FEB 2024 to 21 MAR 2024

NE-4, 22 FEB 2024 to 21 MAR 2024

APP CRS	Rwy Idg	<b>4650</b>
<b>354°</b>	TDZE	<b>898</b>
	Apt Elev	<b>898</b>

# RNAV (GPS) RWY 35

ZELIENOPLE MUNI (PJC)

RNP APCH.

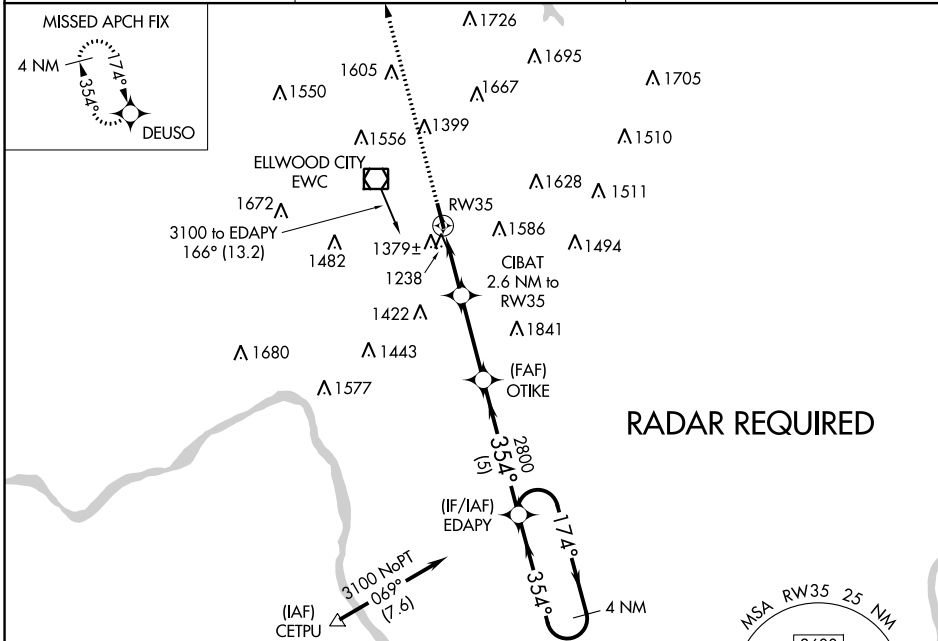
**NA** Circling Rwy 17 NA at night. Rwy 35 helicopter visibility reduction below  $\frac{3}{4}$  SM NA.

**MISSED APPROACH:**  
Climb to 3000 direct DEUSO and hold.

AWOS-3PT  
**118.45**

PITTSBURGH APP CON  
**124.75 338.2**

CTAF  
**122.9**

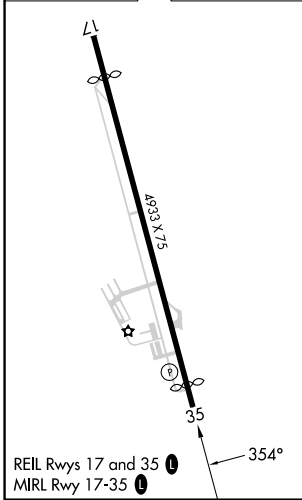


**RADAR REQUIRED**

NE-4, 22 FEB 2024 to 21 MAR 2024

NE-4, 22 FEB 2024 to 21 MAR 2024

ELEV	<b>898</b>	<b>D</b>	TDZE	<b>898</b>
------	------------	----------	------	------------



3000	DEUSO	Visual Segment - Obstacles.		4 NM Holding Pattern
		CIBAT 2.6 NM to RW35	OTIKE	EDAPY
		1.9 NM to RW35	2800	174° → 3100
		1.9 NM	0.7 NM	3.1 NM
		5 NM		
CATEGORY	A	B	C	D
LNAV MDA	1640-1 742 (800-1)	1640-1¼ 742 (800-1¼)		NA
<b>C</b> CIRCLING	1680-1 782 (800-1)	1700-1¼ 802 (900-1¼)		NA