

LOC/DME I-PGV <b>110.7</b> Chan <b>44</b>	APP CRS <b>197°</b>	Rwy Idg <b>6505</b> TDZE <b>25</b> Apt Elev <b>26</b>
---	------------------------	---

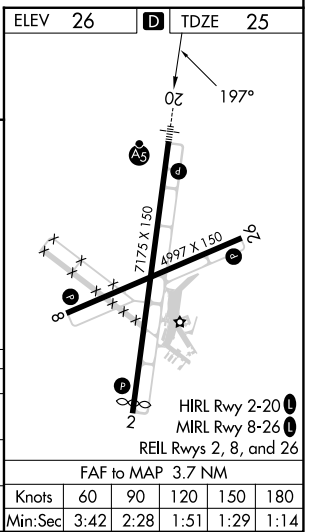
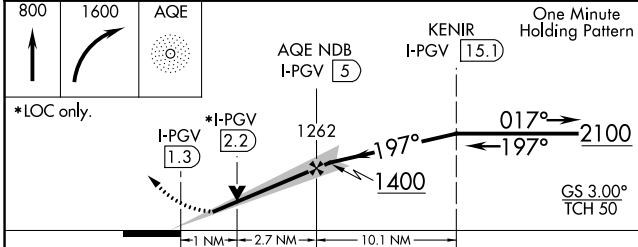
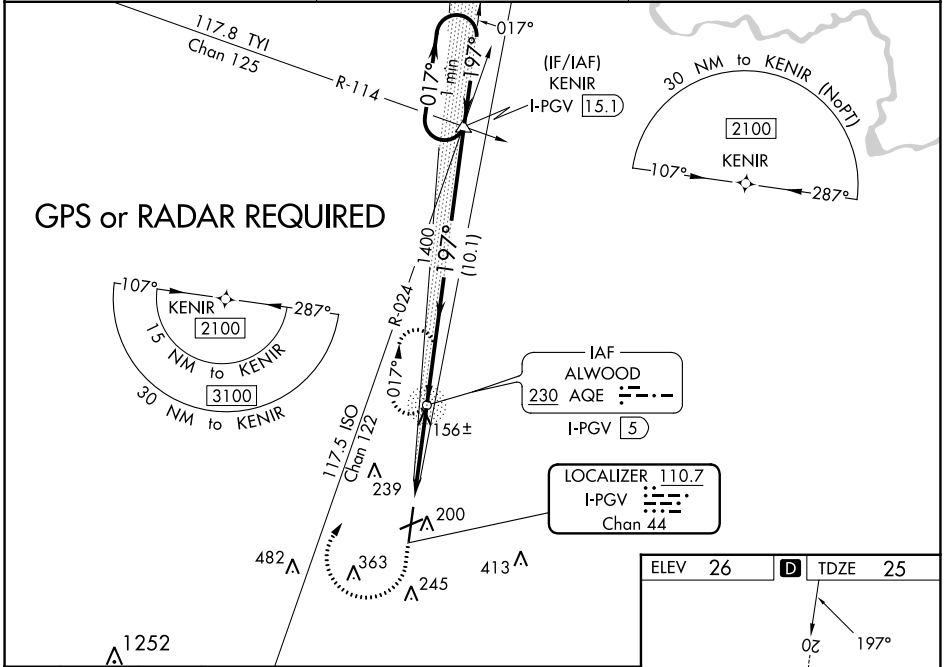
# ILS Y or LOC Y RWY 20

PITT-GREENVILLE (PGV)

**ADF required.** VDP NA with Washington altimeter setting. When local altimeter setting not received use Washington altimeter setting and increase S-ILS 20 DA to 298 feet; increase all MDAs 60 feet and S-LOC 20 visibility Cat C/D 1/2 SM, and Circling visibility Cat D 1/4 SM. For inop ALS when using Washington altimeter setting, increase S-ILS 20 all Cats visibility 3/8 SM, and S-LOC 20 visibility Cat A/B 1/4 SM. Inop table does not apply to S-ILS all Cats. Rwy 20 helicopter visibility reduction below 3/4 SM NA. For inop ALS, increase S-LOC 20 visibility Cat A/B 1/4 SM, Cat C/D 3/8 SM.

**MALSR**  
MISSED APPROACH: Climb to 800 then climbing right turn to 1600 direct AQE NDB and hold.

AWOS-3 <b>128.425</b>	WASHINGTON CENTER <b>123.85 279.65</b>	UNICOM <b>122.8 (CTAF) 1</b>
--------------------------	---	---------------------------------



CATEGORY	A	B	C	D
S-ILS 20		257-3/4	231 (300-3/4)	
S-LOC 20		420-3/4	394 (400-3/4)	
<b>C</b> CIRCLING	600-1 574 (600-1)	620-1 594 (600-1)	700-2 674 (700-2)	800-2 1/2 774 (800-2 1/2)

SE-2, 22 FEB 2024 to 21 MAR 2024

SE-2, 22 FEB 2024 to 21 MAR 2024

LOC/DME I-PGV <b>110.7</b> Chan <b>44</b>	APP CRS <b>197°</b>	Rwy Idg <b>6505</b> TDZE <b>25</b> Apt Elev <b>26</b>
---	------------------------	---

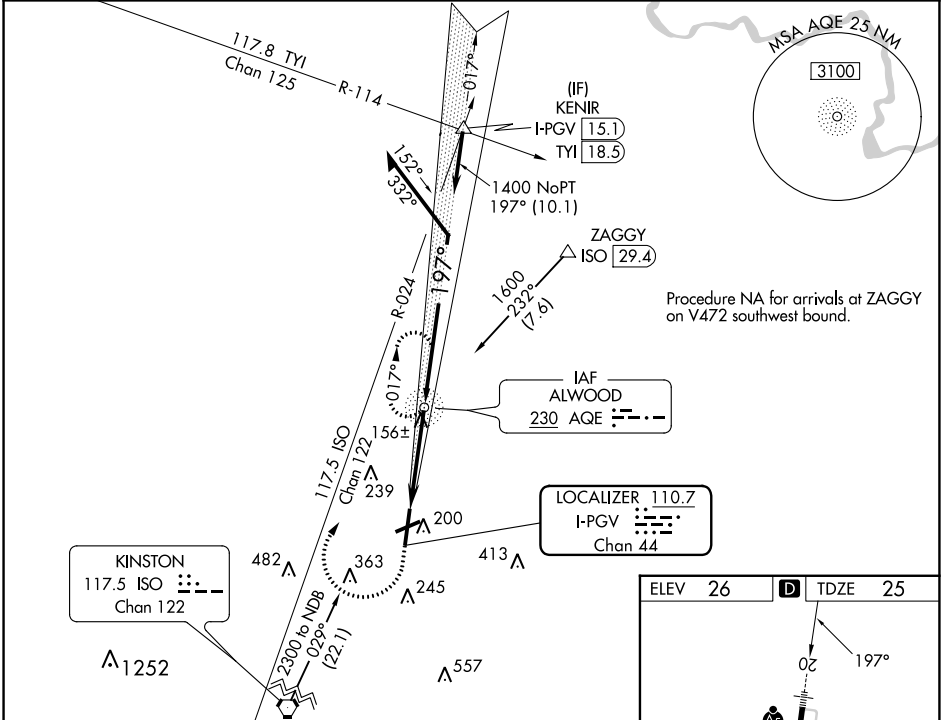
# ILS Z or LOC Z RWY 20

PITT-GREENVILLE (PGV)

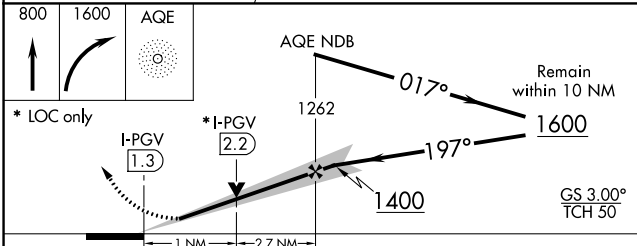
**NA** ADF required. VDP NA with Washington altimeter setting. When local altimeter setting not received use Washington altimeter and increase S-ILS 20 DA to 298 feet; increase all MDAs 60 feet and S-LOC 20 visibility Cat C/D 1/2 SM, and Circling visibility Cat D 1/4 SM. For inop ALS when using Washington altimeter setting, increase S-ILS 20 all Cats visibility 3/8 SM, and S-LOC 20 visibility Cat A/B 1/4 SM. Inop table does not apply to S-ILS all Cats. Rwy 20 helicopter visibility reduction below 3/4 SM NA. For inop ALS, increase S-LOC 20 visibility Cat A/B 1/4 SM, Cat C/D 3/8 SM.

**MALSR** MISSED APPROACH: Climb to 800 then climbing right turn to 1600 direct AQE NDB and hold.

AWOS-3 <b>128.425</b>	WASHINGTON CENTER <b>123.85 279.65</b>	UNICOM <b>122.8 (CTAF)</b>
--------------------------	---	-------------------------------



Procedure NA for arrivals at ZAGGY on V472 southwest bound.



ELEV 26	<b>D</b> TDZE 25												
HIRL Rwy 2-20 MIRL Rwy 8-26 REIL Rws 2, 8, and 26													
FAF to MAP 3.7 NM													
CIRCLING	<table border="1"> <tr> <td>Knots</td> <td>60</td> <td>90</td> <td>120</td> <td>150</td> <td>180</td> </tr> <tr> <td>Min:Sec</td> <td>3:42</td> <td>2:28</td> <td>1:51</td> <td>1:29</td> <td>1:14</td> </tr> </table>	Knots	60	90	120	150	180	Min:Sec	3:42	2:28	1:51	1:29	1:14
Knots	60	90	120	150	180								
Min:Sec	3:42	2:28	1:51	1:29	1:14								

CATEGORY	A	B	C	D
S-ILS 20		257-3/4	231 (300-3/4)	
S-LOC 20		420-3/4	394 (400-3/4)	
<b>C</b> CIRCLING	600-1 574 (600-1)	620-1 594 (600-1)	700-2 674 (700-2)	800-2 1/2 774 (800-2 1/2)

SE-2, 22 FEB 2024 to 21 MAR 2024

SE-2, 22 FEB 2024 to 21 MAR 2024

WAAS CH <b>42738</b> <b>W02A</b>	APP CRS <b>017°</b>	Rwy Idg <b>6904</b> TDZE <b>24</b> Apt Elev <b>26</b>
--	------------------------	---

# RNAV (GPS) RWY 2

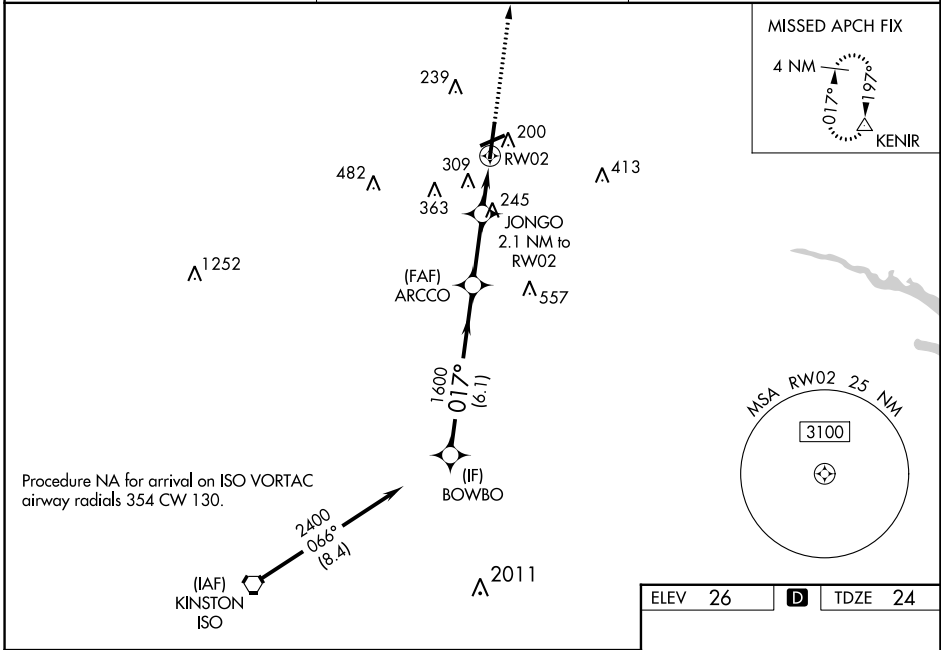
PITT-GREENVILLE (PGV)

RNP APCH-GPS.

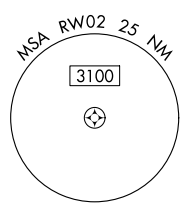
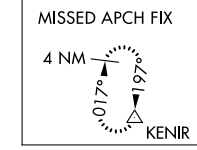
**⚠** Baro-VNAV NA when using Washington altimeter setting. For uncompensated Baro-VNAV systems, LNAV/VNAV NA below -15°C or above 50°C. Rwy 2 helicopter visibility reduction below 3/4 SM NA. When local altimeter setting not received use Washington altimeter setting and increase LPV DA to 444 feet, visibility all Cats 1/8 SM; increase LNAV/VNAV DA to 661; increase all MDAs 60 feet, LNAV visibility Cat C and D and Circling Cat D 1/4 SM. VDP NA when using Washington altimeter setting.

**MISSED APPROACH:** Climb to 2100 direct KENIR and hold.

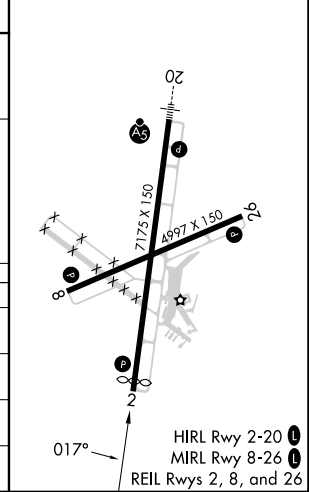
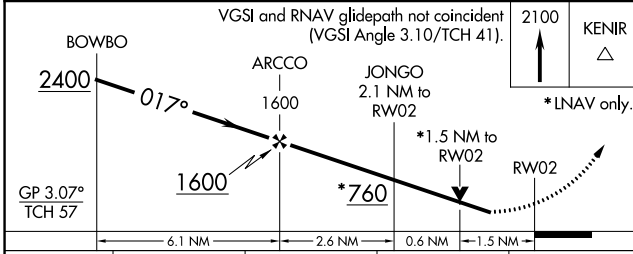
AWOS-3 <b>128.425</b>	WASHINGTON CENTER <b>123.85 279.65</b>	UNICOM <b>122.8 (CTAF)</b>
--------------------------	---	-------------------------------



Procedure NA for arrival on ISO VORTAC  
airway radials 354 CW 130.



ELEV 26	<b>D</b>	TDZE 24
---------	----------	---------



CATEGORY	A	B	C	D
LPV DA	403-1		379 (400-1)	
LNAV/VNAV DA	620-1 3/4		596 (600-1 3/4)	
LNAV MDA	540-1	516 (600-1)	540-1 3/8	516 (600-1 3/8)
<b>C</b> CIRCLING	600-1 574 (600-1)	620-1 594 (600-1)	700-2 674 (700-2)	800-2 1/2 774 (800-2 1/2)

HIRL Rwy 2-20 **1**  
MIRL Rwy 8-26 **1**  
REIL Rwy 2, 8, and 26

SE-2, 22 FEB 2024 to 21 MAR 2024

SE-2, 22 FEB 2024 to 21 MAR 2024

WAAS CH <b>87011</b> <b>W20A</b>	APP CRS <b>197°</b>	Rwy Idg TDZE Apt Elev	<b>6505</b> <b>25</b> <b>26</b>
--	------------------------	-----------------------------	---------------------------------------

# RNAV (GPS) RWY 20

PITT-GREENVILLE (PGV)

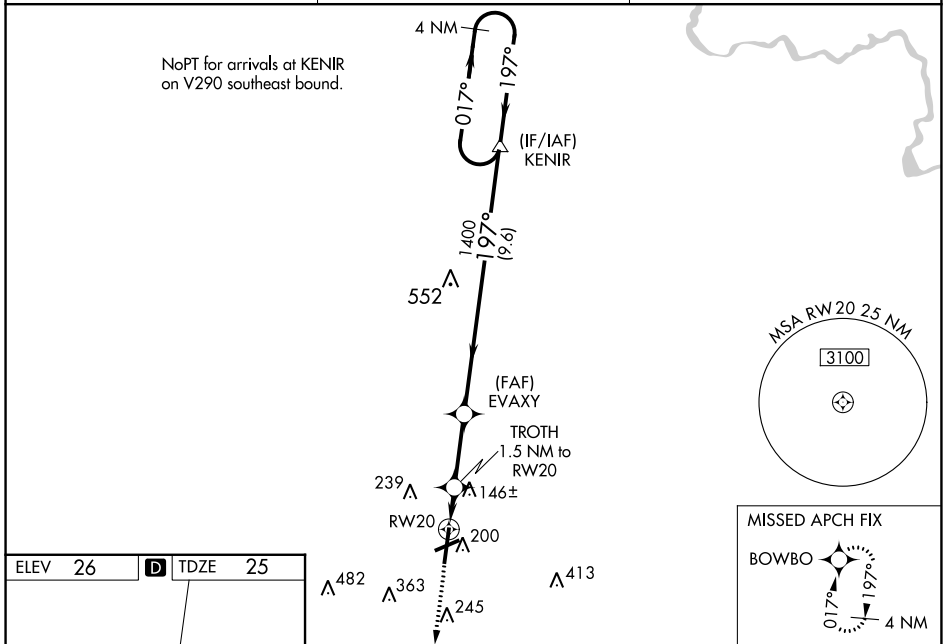
RNP APCH - GPS.

**⚠** Baro-VNAV NA when using Washington altimeter setting. For uncompensated Baro-VNAV systems, LNAV/VNAV NA below -15°C or above 50°C. When local altimeter setting not received use Washington altimeter setting and increase LPV DA to 272 feet; increase LNAV/VNAV DA to 345; increase all MDAs 60 feet and Circling visibility Cat D ¼ SM. For inop ALS, increase LNAV/VNAV all Cats visibility to ¾ mile and LNAV all Cats visibility to 1 mile. For inop ALS when using Washington altimeter setting, increase LNAV/VNAV all Cats visibility ½ SM, and LNAV visibility Cat A/B ¼ SM. Rwy 20 helicopter visibility reduction below ¾ SM NA.

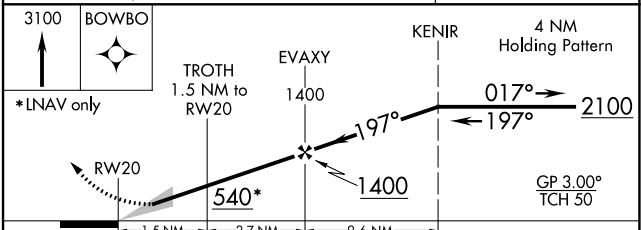
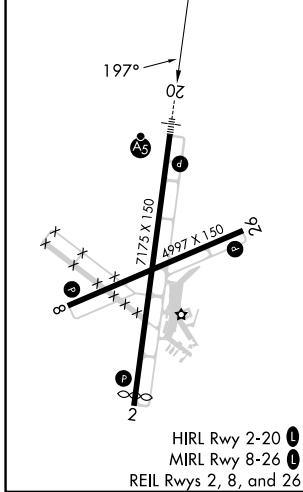


**MISSED APPROACH:**  
Climb to 3100 direct BOWBO and hold, continue climb-in-hold to 3100.

AWOS-3 <b>128.425</b>	WASHINGTON CENTER <b>123.85 279.65</b>	UNICOM <b>122.8 (CTAF) 0</b>
--------------------------	---	---------------------------------



ELEV 26	<b>D</b>	TDZE 25
---------	----------	---------



CATEGORY	A	B	C	D
LPV DA		231-½	205 (300-½)	
LNAV/VNAV DA		304-¾	278 (300-¾)	
LNAV MDA		400-¾	374 (400-¾)	
<b>C</b> CIRCLING	600-1 574 (600-1)	620-1 594 (600-1)	700-2 674 (700-2)	800-2½ 774 (800-2½)

SE-2, 22 FEB 2024 to 21 MAR 2024

SE-2, 22 FEB 2024 to 21 MAR 2024

WAAS CH <b>53711</b> <b>W26A</b>	APP CRS <b>256°</b>	Rwy Idg TDZE Apt Elev	<b>4997</b> <b>24</b> <b>26</b>
--	------------------------	-----------------------------	---------------------------------------

# RNAV (GPS) RWY 26

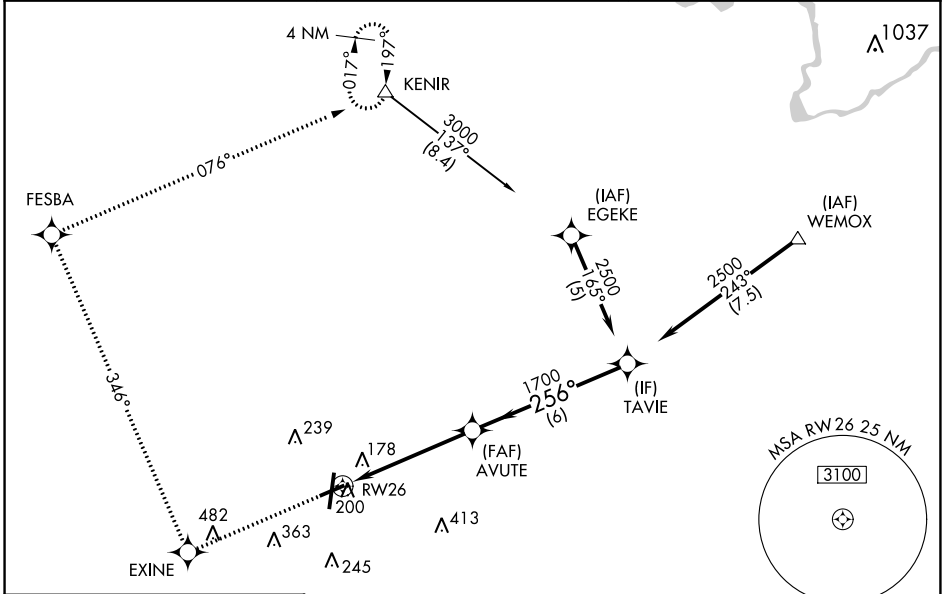
PITT-GREENVILLE (PGV)

RNP APCH - GPS

▼ Baro-VNAV NA when using Washington altimeter setting. For uncompensated Baro-VNAV systems, LNAV/VNAV NA below -15°C or above 48°C. Rwy 26 helicopter visibility reduction below 3/4 SM NA. When local altimeter setting not received use Washington altimeter setting and increase LPV DA to 376 feet, visibility all Cats 1/8 SM; increase LNAV/VNAV DA to 505, visibility all Cats 1/8 SM; increase all MDAs 60 feet, LNAV visibility Cat C and D and Circling Cat D 1/4 SM.

MISSED APPROACH: Climb to 3000 direct EXINE and via 346° track to FESBA and via 076° track to KENIR and hold.

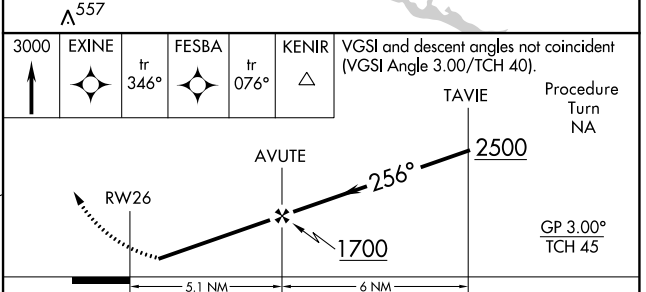
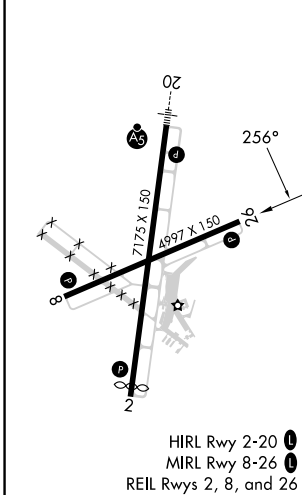
AWOS-3 <b>128.425</b>	WASHINGTON CENTER <b>123.85 279.65</b>	UNICOM <b>122.8 (CTAF) 0</b>
--------------------------	---	---------------------------------



SE-2, 22 FEB 2024 to 21 MAR 2024

SE-2, 22 FEB 2024 to 21 MAR 2024

ELEV 26	<b>D</b>	TDZE 24
---------	----------	---------



CATEGORY	A	B	C	D
LPV DA		335-7/8	311 (400-7/8)	
LNAV/VNAV DA		464-1 1/4	440 (500-1 1/4)	
LNAV MDA	520-1	496 (500-1)	520-1 3/8	496 (500-1 3/8)
CIRCLING	600-1 574 (600-1)	620-1 594 (600-1)	700-2 674 (700-2)	800-2 1/2 774 (800-2 1/2)

APP CRS	Rwy Idg	<b>4997</b>
<b>076°</b>	TDZE	<b>24</b>
	Apt Elev	<b>26</b>

# RNAV (GPS) RWY 8

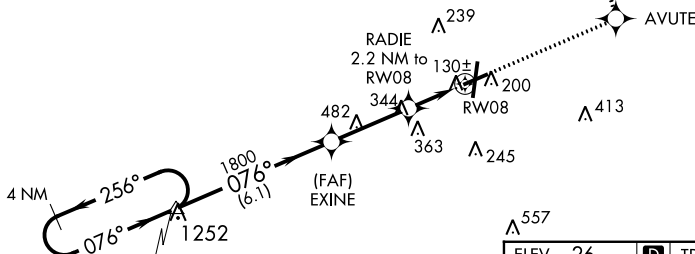
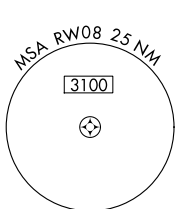
PITT-GREENVILLE (PGV)

RNP APCH - GPS.

**⚠** Rwy 8 helicopter visibility reduction below  $\frac{3}{4}$  SM NA. When local altimeter setting not received use Washington altimeter setting and increase all MDAs 60 feet, LNAV visibility Cat C and D  $\frac{1}{2}$  SM and Circling visibility Cat D  $\frac{1}{4}$  SM.

**MISSED APPROACH:** Climb to 3000 direct AVUTE and via 355° track to KENIR and hold.

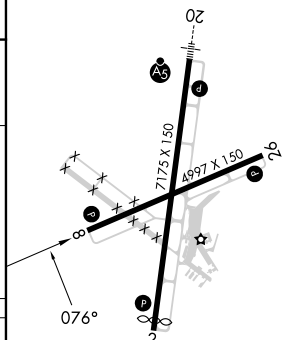
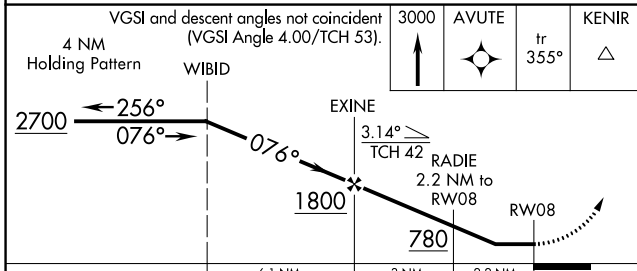
AWOS-3 <b>128.425</b>	WASHINGTON CENTER <b>123.85 279.65</b>	UNICOM <b>122.8 (CTAF) 0</b>
--------------------------	---	---------------------------------



NoPT for arrivals on V157 southbound.

(IF/IAF) WIBID

ELEV	26	<b>D</b>	TDZE	24
------	----	----------	------	----



HIRL Rwy 2-20 **0**  
MIRL Rwy 8-26 **0**  
REIL Rws 2, 8, and 26

CATEGORY	A	B	C	D
LNAV MDA	500-1 476 (500-1)		500-1 $\frac{3}{8}$ 476 (500-1 $\frac{3}{8}$ )	
CIRCLING	600-1 574 (600-1)	620-1 594 (600-1)	700-2 674 (700-2)	800-2 $\frac{1}{2}$ 774 (800-2 $\frac{1}{2}$ )

SE-2, 22 FEB 2024 to 21 MAR 2024

SE-2, 22 FEB 2024 to 21 MAR 2024