

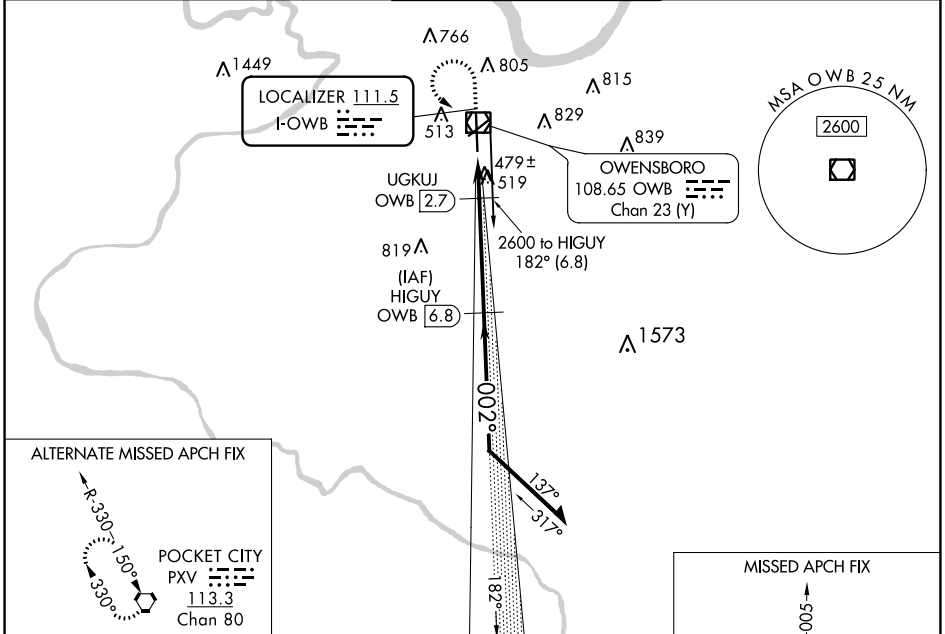
LOC I-OWB 111.5	APP CRS 002°	Rwy Idg TDZE Apt Elev	8000 401 407
---------------------------	------------------------	-----------------------------	---

ILS or LOC RWY 36

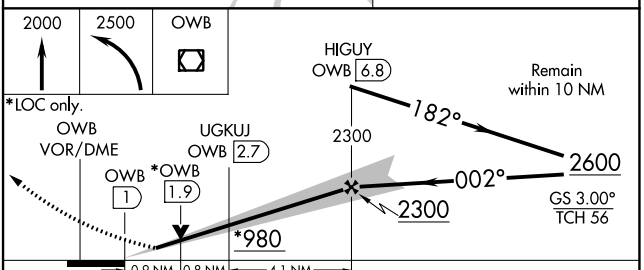
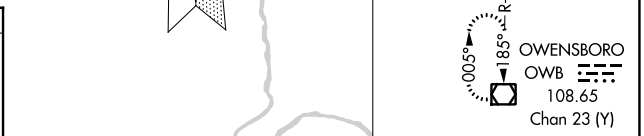
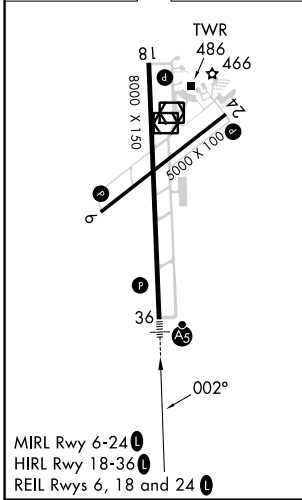
OWENSBORO/DAVISS COUNTY RGNL (OWB)

DME required.		MALSR	MISSED APPROACH: Climb to 2000 then climbing left turn to 2500 direct OWB VOR/DME and hold, continue climb-in-hold to 2500.	

AWOS-3PT 119.025	EVANSVILLE APP CON * 124.025 290.9	OWENSBORO TOWER * 120.7 (CTAF) 251.15	GND CON 121.7	UNICOM 122.95
----------------------------	--	---	-------------------------	-------------------------



ELEV 407	D	TDZE 401
-----------------	----------	-----------------



CATEGORY	A	B	C	D
S-ILS 36		601-1/2	200 (200-1/2)	
S-LOC 36		740-1/2	339 (400-1/2)	
CIRCLING	860-1 453 (500-1)	1120-1 713 (800-1)	1140-2 733 (800-2)	1140-2 1/4 733 (800-2 1/4)

SE-1, 22 FEB 2024 to 21 MAR 2024

SE-1, 22 FEB 2024 to 21 MAR 2024

WAAS CH 78216 W18A	APP CRS 182°	Rwy Idg 8000 TDZE 407 Apt Elev 407
--	------------------------	---

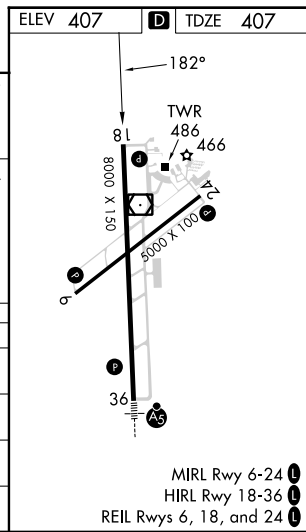
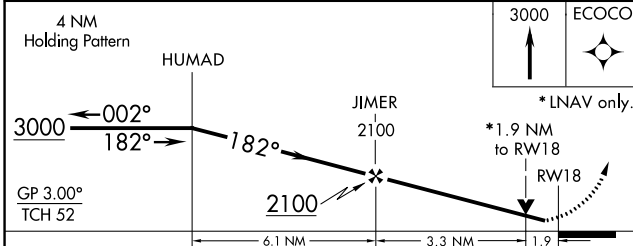
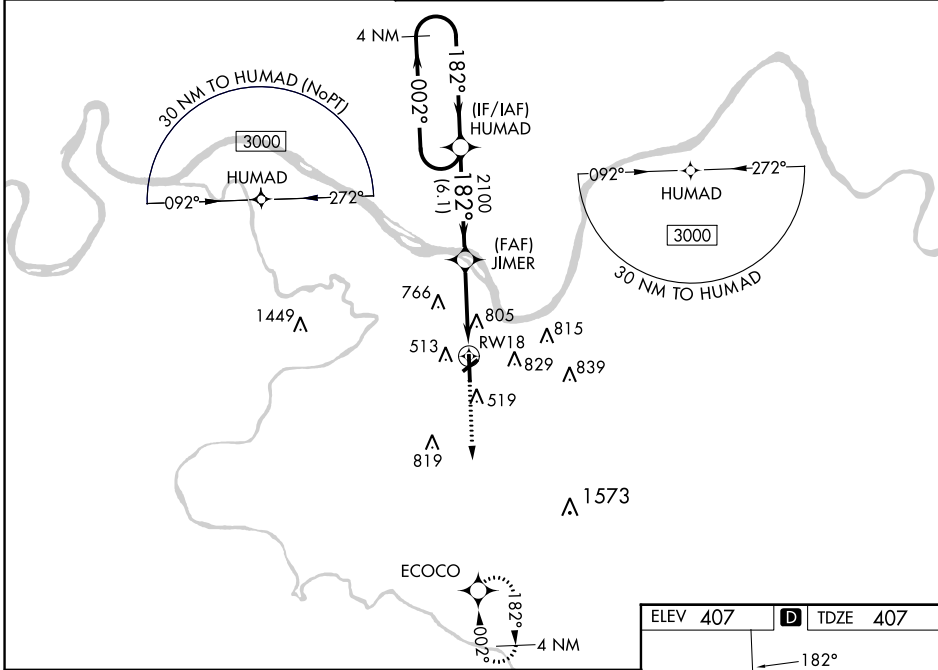
RNAV (GPS) RWY 18

OWENSBORO/DAVIESS COUNTY RGNL (OWB)

⚠ For uncompensated Baro-VNAV systems, LNAV/VNAV NA below -15° C (5°F) or above 54°C (130°F). DME/DME RNP-0.3 NA. Rwy 18 helicopter visibility reduction below 3/4 SM NA. When local altimeter setting not received, use Evansville altimeter setting: increase LPV DA to 666 feet; increase LNAV/VNAV DA to 1204 feet and all Cats visibility 1/4 mile; increase all MDA 60 feet and LNAV Cats C/D visibility 1/8 mile and Circling Cats C/D visibility 1/4 mile. Baro-VNAV and VDP NA when using Evansville altimeter setting.

MISSED APPROACH:
Climb to 3000 direct ECOCO and hold.

AWOS-3PT 119.025	EVANSVILLE APP CON * 124.025 290.9	OWENSBORO TOWER * 120.7 (CTAF) 251.15	GND CON 121.7	UNICOM 122.95
----------------------------	--	---	-------------------------	-------------------------



CATEGORY	A	B	C	D
LPV DA	607-3/4 200 (200-3/4)			
LNAV/ VNAV DA	1145-2 1/2 738 (800-2 1/2)			
LNAV MDA	1060-1 653 (700-1)	1060-1 7/8 653 (700-1 7/8)		
CIRCLING	1060-1 653 (700-1)	1120-1 713 (800-1)	1140-2 733 (800-2)	1140-2 1/4 733 (800-2 1/4)

SE-1, 22 FEB 2024 to 21 MAR 2024

SE-1, 22 FEB 2024 to 21 MAR 2024

WAAS CH 49116 W24A	APP CRS 236°	Rwy Idg 5000 TDZE 403 Apt Elev 407
--	------------------------	---

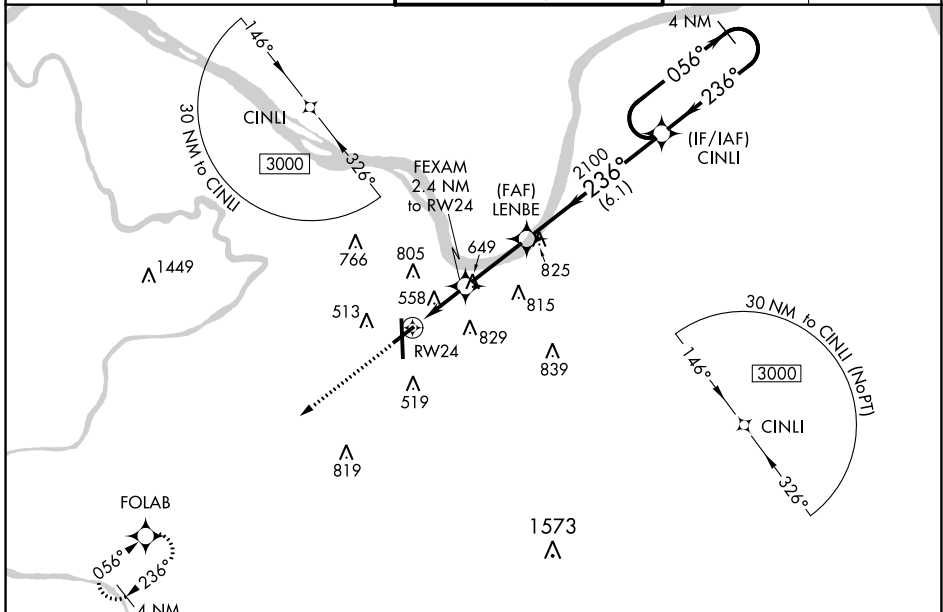
RNAV (GPS) RWY 24

OWENSBORO/DAVIESS COUNTY RGNL (OWB)

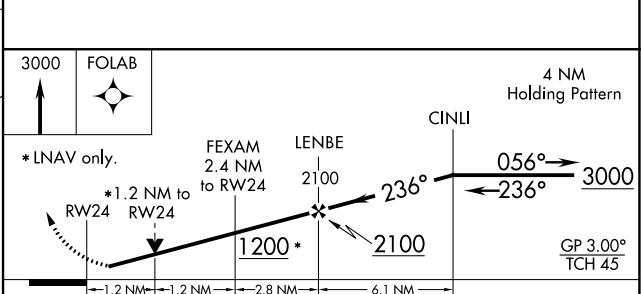
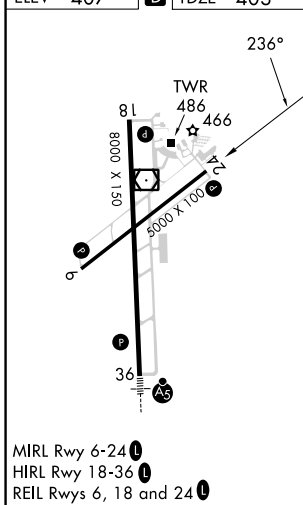
⚠ For uncompensated Baro-VNAV systems, LNAV/VNAV NA below -15°C (5°F) or above 54°C (130°F). DME/DME RNP-0.3 NA. Rwy 24 helicopter visibility reduction below ¾ SM NA. When local altimeter setting not received, use Evansville altimeter setting: increase LPV DA to 712 feet and all Cats visibility ¼ mile; increase LNAV/VNAV DA to 902 feet and all Cats visibility ¼ mile; increase all MDA 60 feet and LNAV Cats C/D and Circling Cats C/D visibility ¼ mile. Baro-VNAV and VDP NA when using Evansville altimeter setting.

MISSED APPROACH:
Climb to 3000 direct FOLAB and hold.

AWOS-3PT 119.025	EVANSVILLE APP CON * 124.025 290.9	OWENSBORO TOWER * 120.7 (CTAF) 0 251.15	GND CON 121.7	UNICOM 122.95
----------------------------	--	---	-------------------------	-------------------------



ELEV 407	D	TDZE 403
----------	----------	----------



CATEGORY	A	B	C	D
LPV DA		653-¾	250 (300-¾)	
LNAV/VNAV DA		843-1½	440 (500-1½)	
LNAV MDA	820-1	417 (500-1)	820-1½ 417 (500-1½)	
CIRCLING	860-1 453 (500-1)	1120-1 713 (800-1)	1140-2 733 (800-2)	1140-2¼ 733 (800-2¼)

SE-1, 22 FEB 2024 to 21 MAR 2024

SE-1, 22 FEB 2024 to 21 MAR 2024

WAAS CH 45508 W36A	APP CRS 002°	Rwy Idg 8000 TDZE 401 Apt Elev 407
--	------------------------	---

RNAV (GPS) RWY 36

OWENSBORO/DAVIESS COUNTY RGNL (OWB)

⚠ For uncompensated Baro-VNAV systems, LNAV/VNAV NA below -15°C (5°F) or above 54°C (130°F). DME/DME RNP-0.3 NA. Baro-VNAV and VDP NA when using Evansville altimeter setting. When local altimeter setting not received, use Evansville altimeter setting: increase LPV DA to 656 feet; increase LNAV/VNAV DA to 720 feet and all Cats visibility 1/8 mile; increase all MDA 60 feet and LNAV Cats C/D and Circling Cats C/D visibility 1/4 mile.

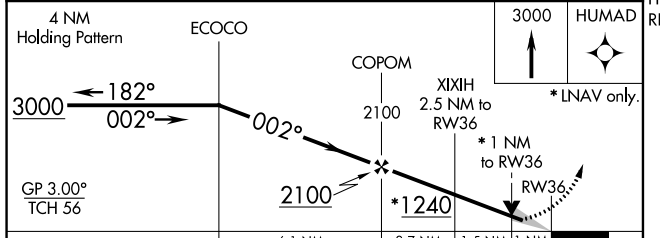
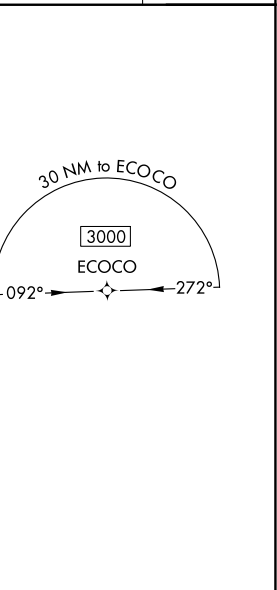
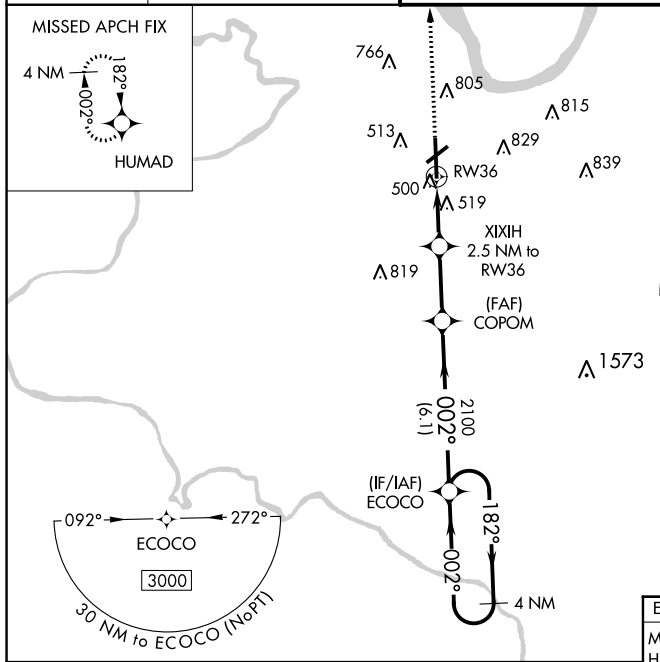
MALSR



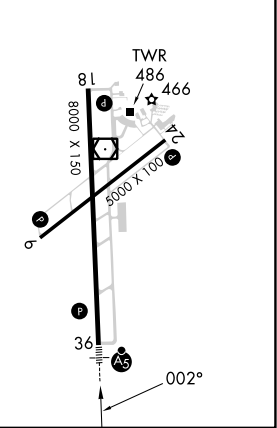
MISSED APPROACH:
Climb to 3000 direct HUMAD and hold.

AWOS-3PT 119.025	EVANSVILLE APP CON * 124.025 290.9	OWENSBORO TOWER * 120.7 (CTAF) 251.15
----------------------------	--	---

GND CON 121.7	UNICOM 122.95
-------------------------	-------------------------



ELEV 407	D TDZE 401
MIRL Rwy 6-24 L	
HIRL Rwy 18-36 L	
REIL Rws 6, 18, and 24 L	



CATEGORY	A	B	C	D
LPV DA		601-1/2	200 (200-1/2)	
LNAV/VNAV DA		665-1/2	264 (300-1/2)	
LNAV MDA	780-1/2	379 (400-1/2)	780-5/8	379 (400-5/8)
CIRCLING	860-1 453 (500-1)	1120-1 713 (800-1)	1140-2 733 (800-2)	1140-2 1/4 733 (800-2 1/4)

RNAV (GPS) RWY 36

SE-1, 22 FEB 2024 to 21 MAR 2024

SE-1, 22 FEB 2024 to 21 MAR 2024

WAAS CH 40430 W06A	APP CRS 056°	Rwy Idg TDZE Apt Elev	5000 405 407
--	------------------------	-----------------------------	---

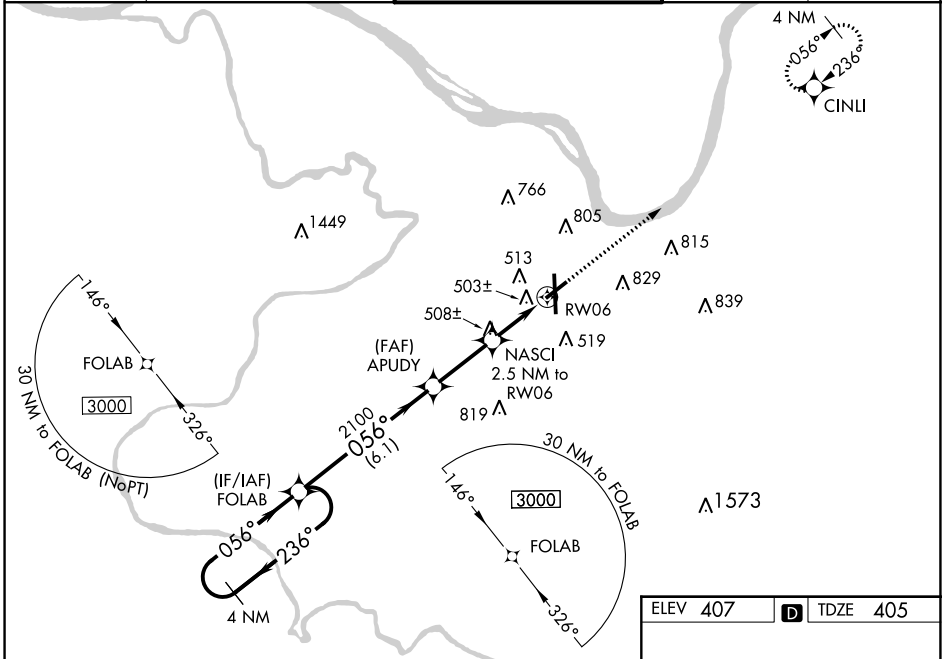
RNAV (GPS) RWY 6

OWENSBORO/DAVIESS COUNTY RGNL (OWB)

⚠ For uncompensated Baro-VNAV systems, LNAV/VNAV NA below -15°C (5°F) or above 54°C (130°F). DME/DME RNP-0.3 NA. Rwy 6 helicopter visibility reduction below 3/4 SM NA. When local altimeter setting not received, use Evansville altimeter setting: increase LPV DA to 719 feet and all Cats visibility 1/8 mile; increase LNAV/VNAV DA to 734 feet and all Cats visibility 1/4 mile; increase all MDA 60 feet and LNAV Cats C/D and Circling Cats C/D visibility 1/4 mile. Baro-VNAV and VDP NA when using Evansville altimeter setting.

MISSED APPROACH:
Climb to 3000 direct CINLI and hold.

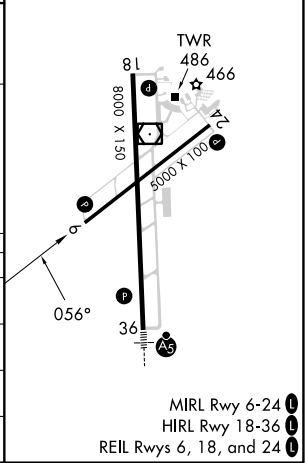
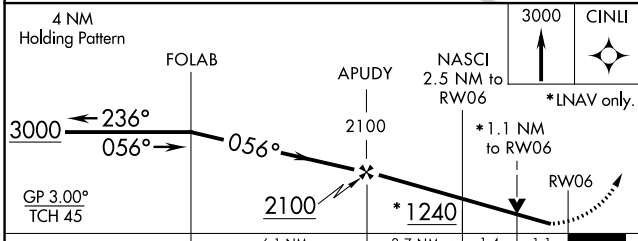
AWOS-3PT 119.025	EVANSVILLE APP CON * 124.025 290.9	OWENSBORO TOWER * 120.7 (CTAF) 251.15	GND CON 121.7	UNICOM 122.95
----------------------------	--	--	-------------------------	-------------------------



SE-1, 22 FEB 2024 to 21 MAR 2024

SE-1, 22 FEB 2024 to 21 MAR 2024

ELEV 407	TDZE 405
----------	----------



CATEGORY	A	B	C	D
LPV DA		660-7/8	255 (300-7/8)	
LNAV/VNAV DA		675-7/8	270 (300-7/8)	
LNAV MDA	800-1	395 (400-1)	800-1 1/8	395 (400-1 1/8)
CIRCLING	860-1 453 (500-1)	1120-1 713 (800-1)	1140-2 733 (800-2)	1140-2 1/4 733 (800-2 1/4)

RNAV (GPS) RWY 6

MIRL Rwy 6-24
HIRL Rwy 18-36
REIL Rws 6, 18, and 24

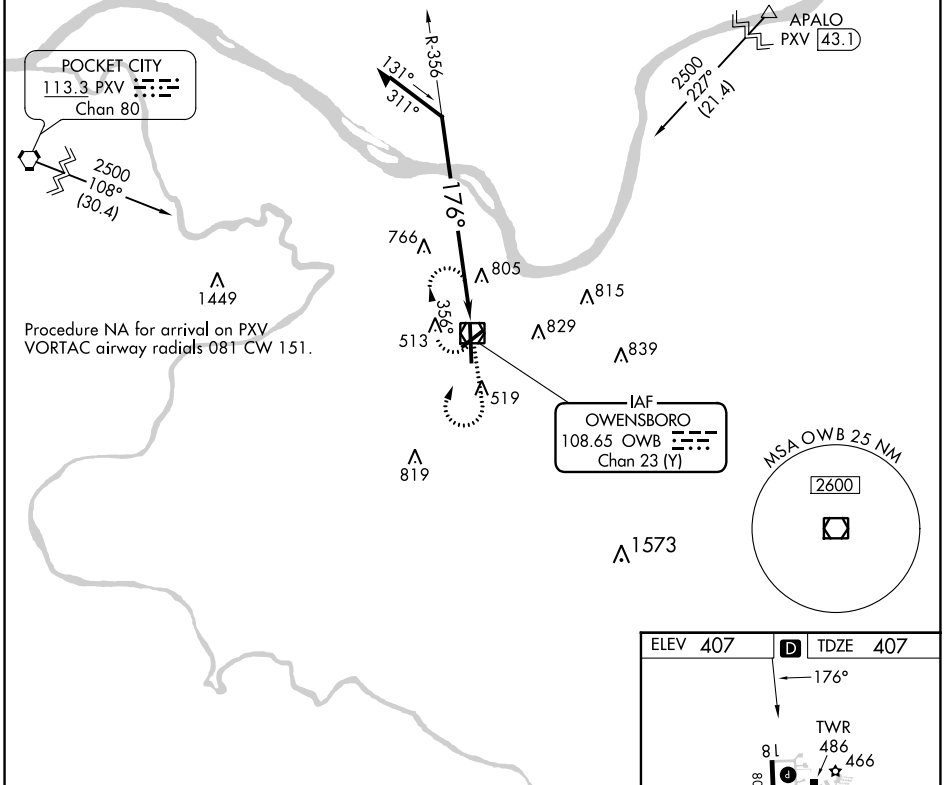
VOR/DME OWB 108.65 Chan 23 (Y)	APP CRS 176°	Rwy Idg TDZE Apt Elev	8000 407 407
--	------------------------	-----------------------------	---

VOR RWY 18

OWENSBORO/DAVIESS COUNTY RGNL (OWB)

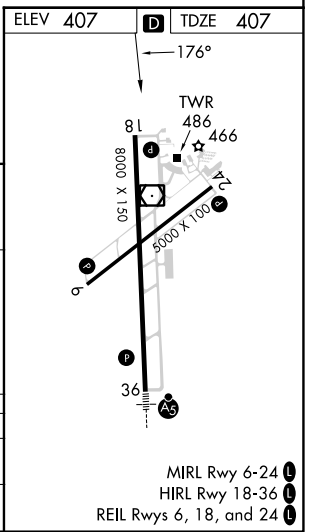
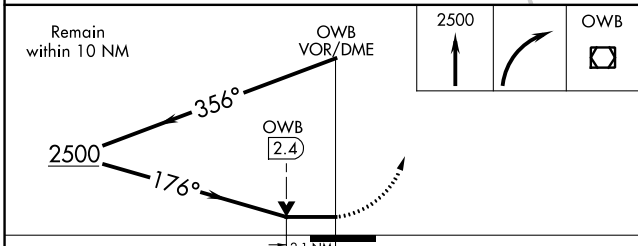
MISSED APPROACH: Climb to 2500 then right turn direct OWB VOR/DME and hold.

AWOS-3PT 119.025	EVANSVILLE APP CON * 124.025 290.9	OWENSBORO TOWER * 120.7 (CTAF) 251.15	GND CON 121.7	UNICOM 122.95
----------------------------	--	---	-------------------------	-------------------------



SE-1, 22 FEB 2024 to 21 MAR 2024

SE-1, 22 FEB 2024 to 21 MAR 2024



CATEGORY	A	B	C	D
S-18	1120-1	713 (800-1)	1120-2	713 (800-2)
CIRCLING	1120-1	713 (800-1)	1140-2 733 (800-2)	1140-2 1/4 733 (800-2 1/4)

MIRL Rwy 6-24
HIRL Rwy 18-36
REIL Rwy 6, 18, and 24

VOR/DME OWB 108.65 Chan 23 (Y)	APP CRS 005°	Rwy Idg TDZE Apt Elev	8000 401 407
--	------------------------	-----------------------------	---

VOR RWY 36

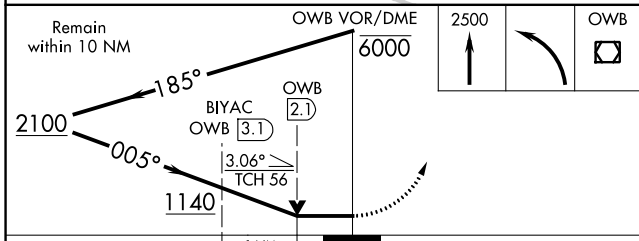
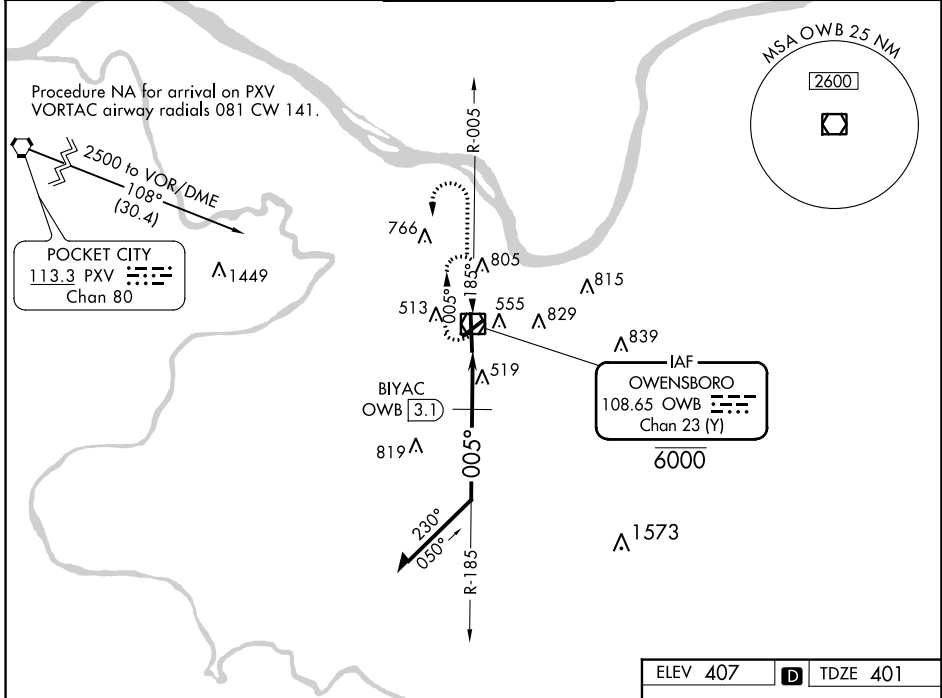
OWENSBORO/DAVIESS COUNTY RGNL (OWB)

▲ For inop ALS, increase S-36 Cat C and D visibility to 2 SM and BIYAC fix minimums S-36 Cat C and D visibility to 1½ SM.

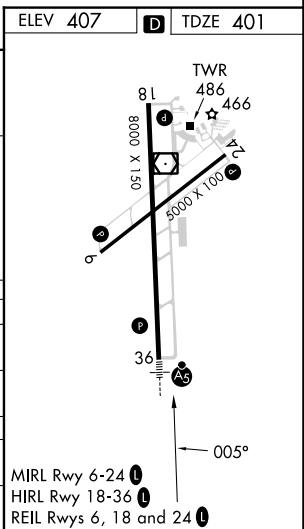
MALSR

MISSED APPROACH: Climb to 2500 then left turn direct OWB VOR/DME and hold.

AWOS-3PT 119.025	EVANSVILLE APP CON ★ 124.025 290.9	OWENSBORO TOWER ★ 120.7 (CTAF) 251.15	GND CON 121.7	UNICOM 122.95
----------------------------	--	--	-------------------------	-------------------------



CATEGORY	A	B	C	D
S-36	1140-½	739 (800-½)	1140-1⅝	739 (800-1⅝)
C CIRCLING	1140-1	733 (800-1)	1140-2	1140-2¼
			733 (800-2)	733 (800-2¼)
BIYAC FIX MINIMUMS				
S-36	820-½	419 (500-½)	820-¾	419 (500-¾)
C CIRCLING	860-1	1120-1	1140-2	1140-2¼
	453 (500-1)	713 (800-1)	733 (800-2)	733 (800-2¼)



VOR RWY 36

SE-1, 22 FEB 2024 to 21 MAR 2024

SE-1, 22 FEB 2024 to 21 MAR 2024

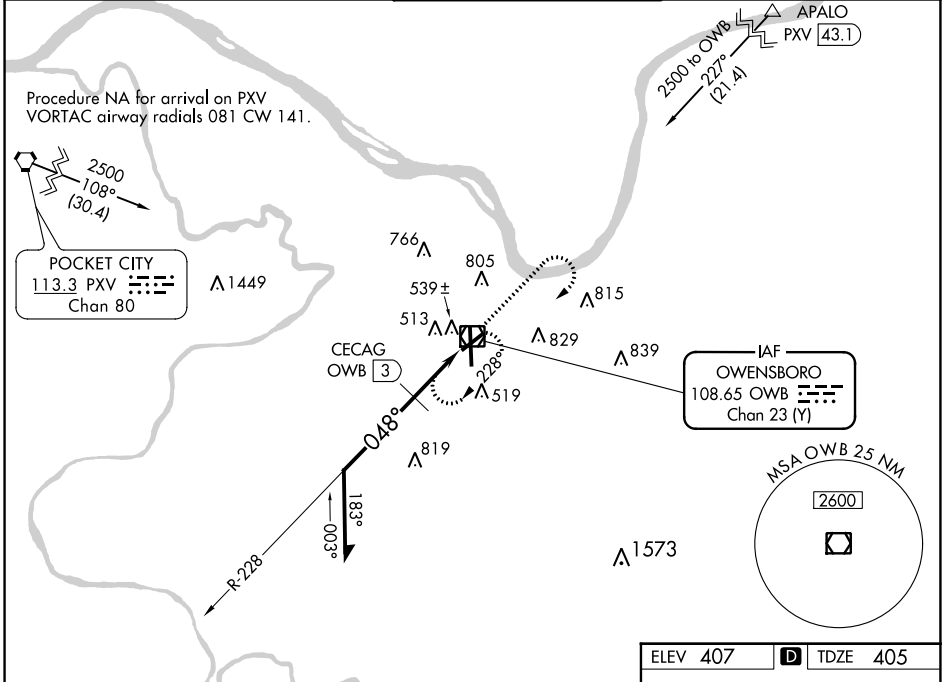
VOR/DME OWB 108.65 Chan 23 (Y)	APP CRS 048°	Rwy Idg TDZE Apt Elev	5000 405 407
--	------------------------	-----------------------------	---

VOR RWY 6

OWENSBORO/DAVIESS COUNTY RGNL (OWB)

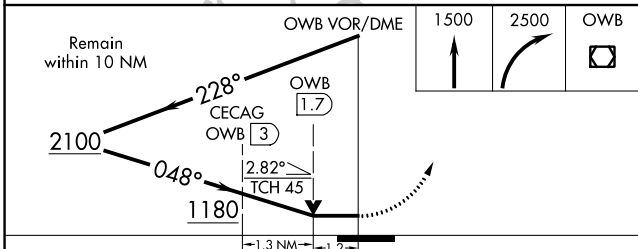
<p>▼ Rwy 6 helicopter visibility reduction below 3/4 SM NA.</p> <p>▲</p>	MISSED APPROACH: Climb to 1500 then climbing right turn to 2500 direct OWB VOR/DME and hold.
--	--

AWOS-3PT 119.025	EVANSVILLE APP CON * 124.025 290.9	OWENSBORO TOWER * 120.7 (CTAF) 251.15	GND CON 121.7	UNICOM 122.95
----------------------------	--	---	-------------------------	-------------------------



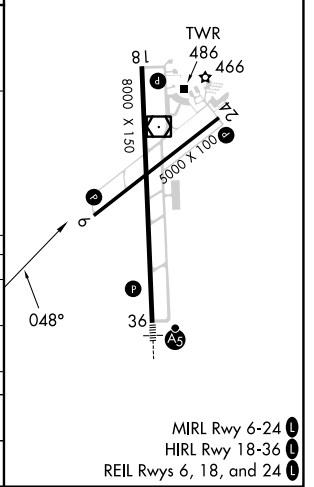
SE-1, 22 FEB 2024 to 21 MAR 2024

SE-1, 22 FEB 2024 to 21 MAR 2024



ELEV 407	D TDZE 405
----------	-------------------

CATEGORY	A	B	C	D
S-6	1180-1 775 (800-1)	1180-1¼ 775 (800-1¼)	1180-2½	775 (800-2½)
C CIRCLING	1180-1 773 (800-1)	1180-1¼ 773 (800-1¼)	1180-2½	773 (800-2½)
CECAG FIX MINIMUMS				
S-6	820-1	415 (500-1)	820-1½	415 (500-1½)
C CIRCLING	860-1 453 (500-1)	1120-1 713 (800-1)	1140-2 733 (800-2)	1140-2¼ 733 (800-2¼)



MIRL Rwy 6-24
HIRL Rwy 18-36
REIL Rwys 6, 18, and 24

VOR RWY 6