

WAAS CH <b>78207</b> W15A	APP CRS <b>146°</b>	Rwy Idg TDZE Apt Elev	<b>5006</b> <b>2193</b> <b>2193</b>
---------------------------------	------------------------	-----------------------------	---

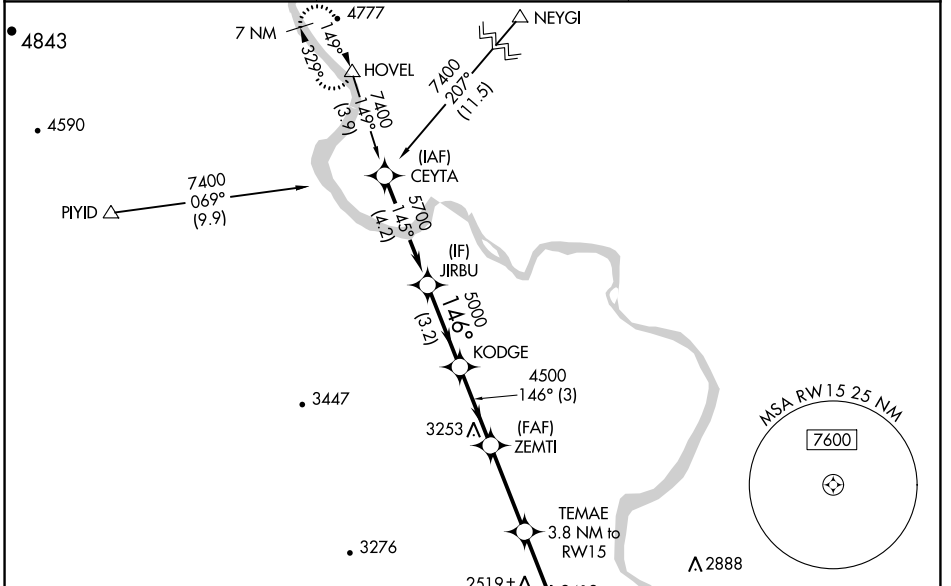
# RNAV (GPS) RWY 15

ONTARIO MUNI (ON0)

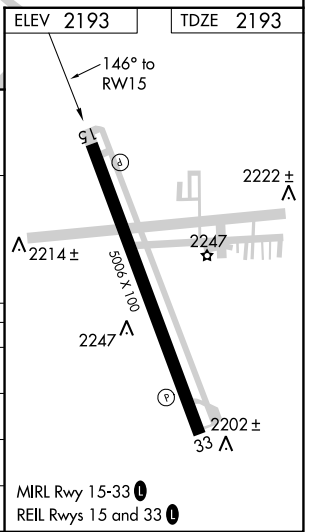
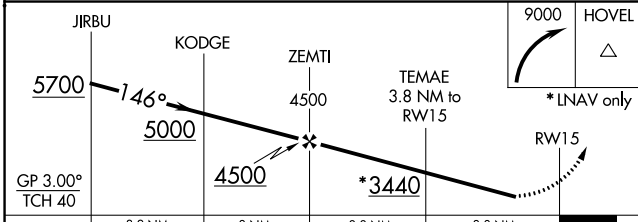
**⚠** Baro-VNAV NA when using Caldwell altimeter setting. For uncompensated Baro-VNAV systems, LNAV/VNAV NA below -18°C (0°F) or above 54°C (130°F). DME/DME RNP-0.3 NA.  
 When local altimeter setting not received, use Caldwell altimeter setting and increase LPV DA to 2867 feet, LNAV/VNAV DA to 2911 feet, and all MDA 100 feet; increase LPV visibility, all Cats by ½ SM, increase LNAV visibility Cats C/D and Circling Cat C by ¼ SM. Rwy 15 helicopter visibility reduction below 1 SM NA. Straight-in Rwy 15 NA at night, Circling Rwy 15 NA at night.

**MISSED APPROACH:** Climbing right turn to 9000 direct HOVEL and hold, continue climb-in-hold to 9000.

ASOS <b>135.275</b>	SALT LAKE CENTER <b>128.05 306.95</b>	UNICOM <b>122.8 (CTAF) 0</b>
------------------------	--	---------------------------------



ELEV 2193	TDZE 2193
-----------	-----------



CATEGORY	A	B	C	D
LPV DA	2769-2 576 (600-2)			
LNAV/VNAV DA	2814-2½ 621 (700-2½)			
LNAV MDA	2780-1 587 (600-1)	2780-1¾ 587 (600-1¾)		
<b>C</b> CIRCLING	2780-1 587 (600-1)	2800-1 607 (700-1)	3120-2¾ 927 (1000-2¾)	3240-3 1047 (1100-3)

NW-1, 22 FEB 2024 to 21 MAR 2024

NW-1, 22 FEB 2024 to 21 MAR 2024

WAAS CH <b>87007</b> W33A	APP CRS <b>326°</b>	Rwy Idg TDZE <b>2193</b> Apt Elev <b>2193</b>	<b>5006</b>
---------------------------------	------------------------	---	-------------

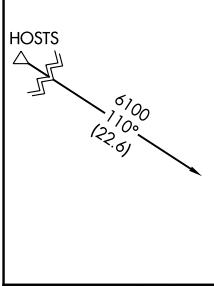
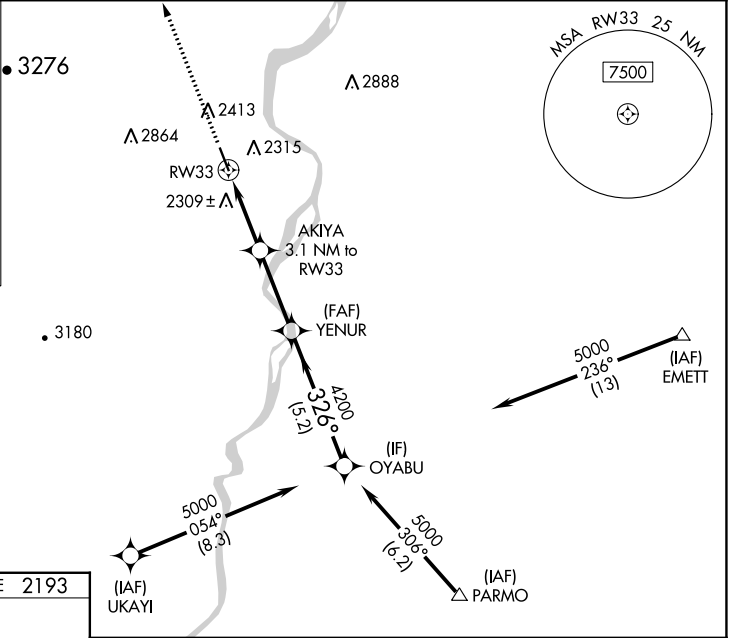
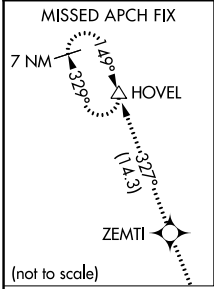
# RNAV (GPS) RWY 33

ONTARIO MUNI (ON0)

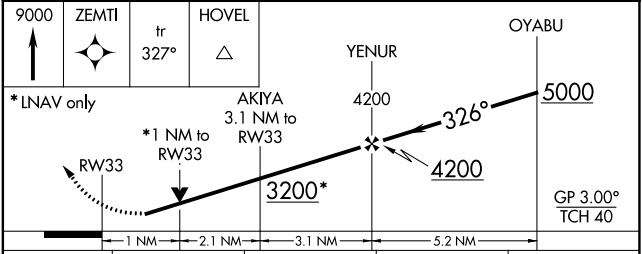
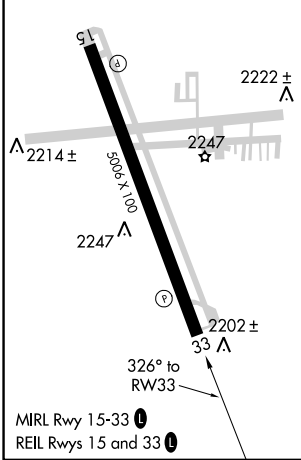
**⚠** For uncompensated Baro-VNAV systems, LNAV/VNAV NA below -18°C (0°F) or above 54°C (130°F). DME/DME RNP -0.3 NA. Baro-VNAV and VDP NA when using Caldwell altimeter setting. When local altimeter setting not received, use Caldwell altimeter setting and increase all DA to 2541 feet and increase LPV and LNAV/VNAV visibility ¾ SM all Cats; increase all MDA 100 feet and increase LNAV Cat C and D ¾ SM and Circling Cat C visibility ¼ SM. Circling Rwy 15 NA at night. Rwy 33 helicopter visibility reduction below ¾ SM NA.

**MISSED APPROACH:** Climb to 9000 direct ZEMTI and on track 327° to HOVEL and hold, continue climb-in-hold 9000.

ASOS <b>135.275</b>	SALT LAKE CENTER <b>128.05 306.95</b>	UNICOM <b>122.8 (CTAF) 0</b>
------------------------	--	---------------------------------



ELEV 2193	TDZE 2193
-----------	-----------



CATEGORY	A	B	C	D
LPV DA		2443-7/8	250 (300-7/8)	
LNAV/VNAV DA		2443-7/8	250 (300-7/8)	
LNAV MDA		2560-1	367 (400-1)	
<b>C</b> CIRCLING	2760-1 567 (600-1)	2800-1 607 (700-1)	3120-2¾ 927 (1000-2¾)	3240-3 1047 (1100-3)

NW-1, 22 FEB 2024 to 21 MAR 2024

NW-1, 22 FEB 2024 to 21 MAR 2024