

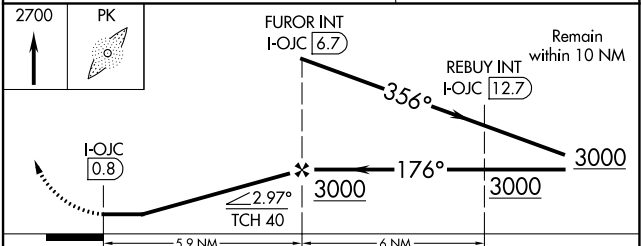
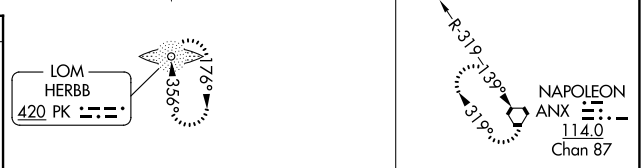
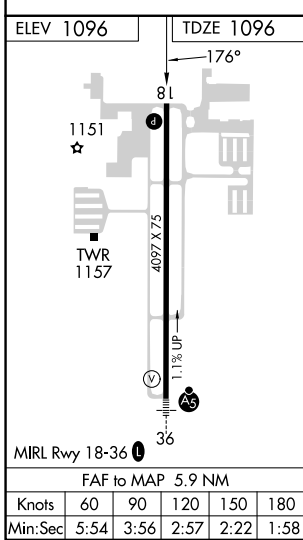
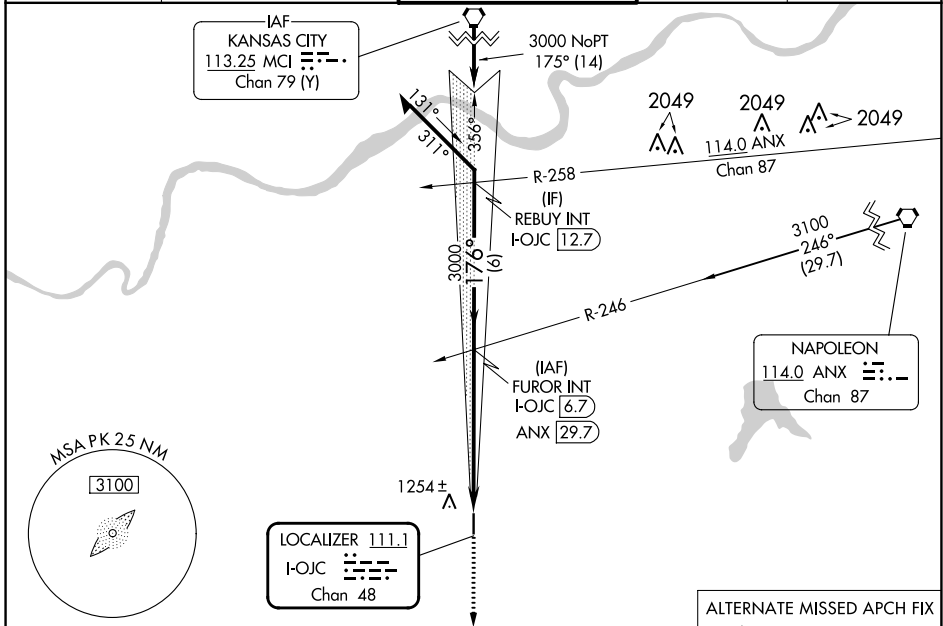
LOC/DME I-OJC 111.1 Chan 48	APP CRS 176°	Rwy Idg TDZE Apt Elev	4097 1096 1096
---	------------------------	-----------------------------	---

LOC RWY 18
JOHNSON COUNTY EXEC (OJC)

ADF required.

MISSED APPROACH: Climb to 2700 direct HERBB LOM and hold.

ATIS 119.35	KANSAS CITY APP CON 118.9 251.075	EXECUTIVE TOWER * 126.0 (CTAF) 225.4	GND CON 121.6	UNICOM 122.95
-----------------------	---	--	-------------------------	-------------------------



CATEGORY	A	B	C	D
S-18	1540-1	444 (500-1)	1540-1 3/8 444 (500-1 3/8)	NA
CIRCLING	1620-1	524 (600-1)	1620-1 1/2 524 (600-1 1/2)	NA

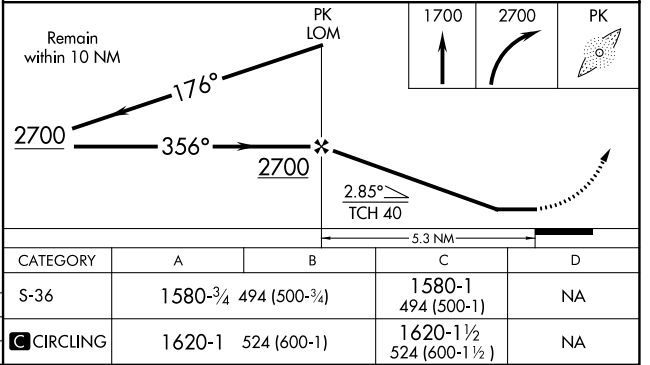
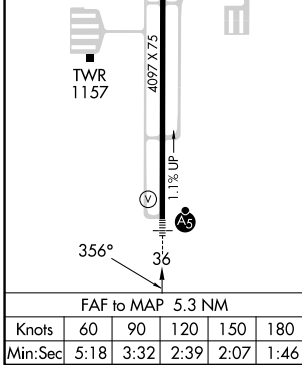
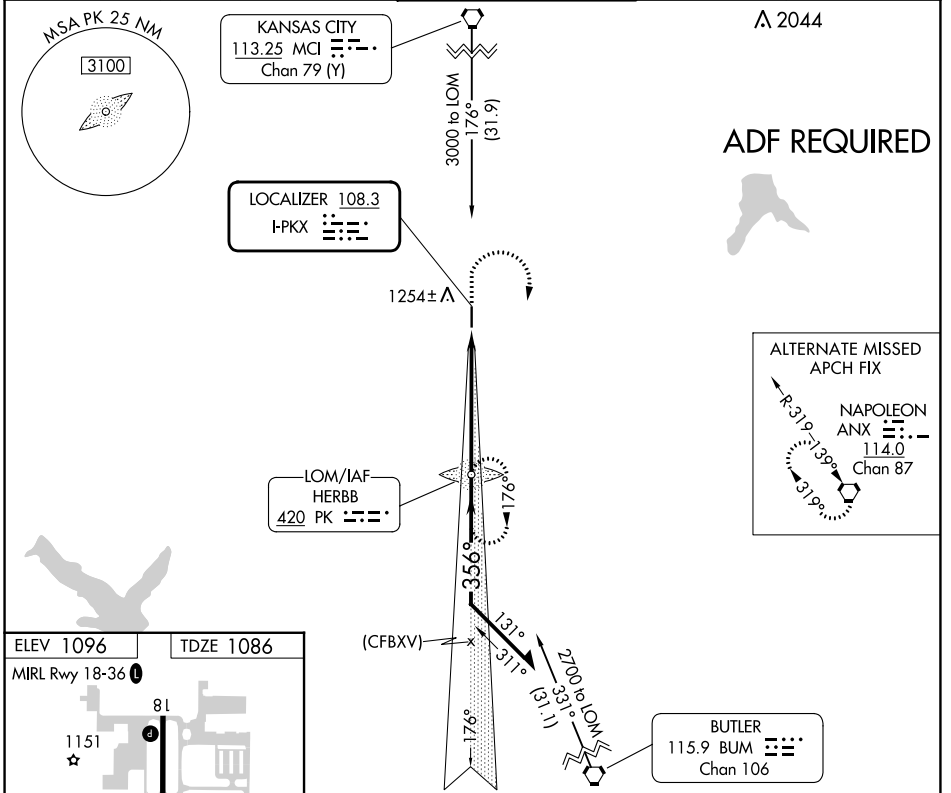
NC-2, 30 NOV 2023 to 28 DEC 2023

NC-2, 30 NOV 2023 to 28 DEC 2023

LOC I-PKX 108.3	APP CRS 356°	Rwy ldg TDZE Apt Elev	4097 1086 1096
---------------------------	------------------------	-----------------------------	---

LOC RWY 36
JOHNSON COUNTY EXEC (OJC)

NA Helicopter visibility reduction below 3/4 SM not authorized. For inoperative MALSRS, increase S-36 Cats A and B visibility 1/4 mile.	MALSRS 		MISSED APPROACH: Climb to 1700 then climbing right turn to 2700 direct HERBB LOM and hold.	
	ATIS 119.35	KANSAS CITY APP CON 118.9 251.075	EXECUTIVE TOWER* 126.0 (CTAF) 225.4	GND CON 121.6



NC-2, 30 NOV 2023 to 28 DEC 2023

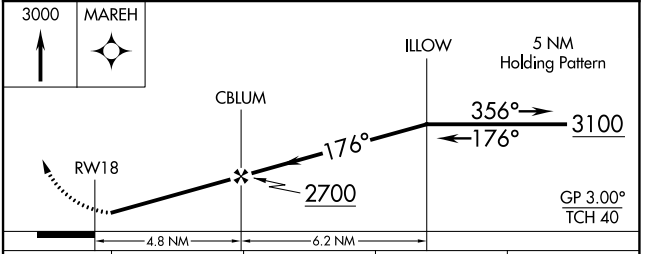
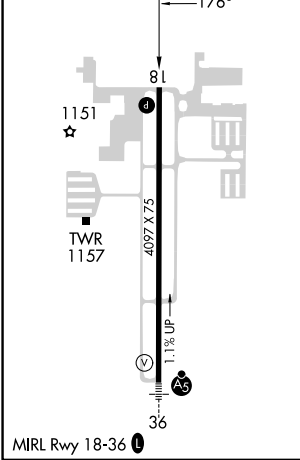
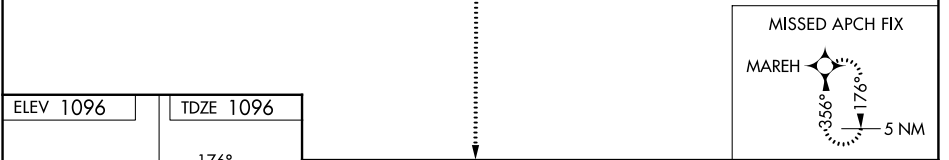
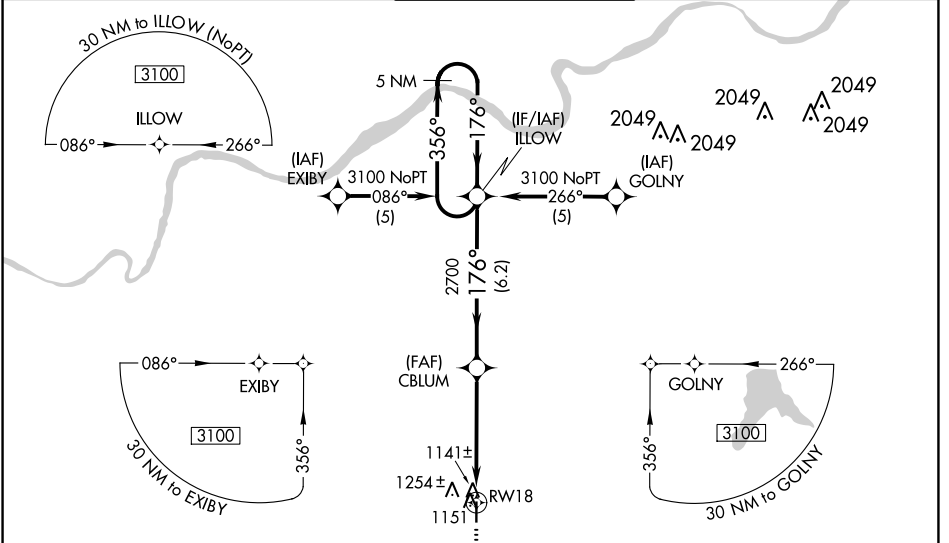
NC-2, 30 NOV 2023 to 28 DEC 2023

WAAS CH 53700 W18A	APP CRS 176°	Rwy Idg TDZE Apt Elev	4097 1096 1096
--	------------------------	-----------------------------	---

RNAV (GPS) RWY 18

JOHNSON COUNTY EXEC (OJC)

RNP APCH. ▼ For uncompensated Baro-VNAV systems, LNAV/VNAV NA below -17°C or above 54°C.		MISSED APPROACH: Climb to 3000 direct MAREH and hold.	
ATIS 119.35	KANSAS CITY APP CON 118.9 251.075	EXECUTIVE TOWER* 126.0 (CTAF) 0 225.4	UNICOM 122.95



CATEGORY	A	B	C	D
LPV DA	1346-1 250 (300-1)			NA
LNAV/VNAV DA	1527-1½ 431 (500-1½)			NA
LNAV MDA	1560-1 464 (500-1)		1560-1¼ 464 (500-1¼)	NA
<input checked="" type="checkbox"/> CIRCLING	1620-1 524 (600-1)		1620-1½ 524 (600-1½)	NA

NC-2, 30 NOV 2023 to 28 DEC 2023

NC-2, 30 NOV 2023 to 28 DEC 2023

WAAS CH 82700 W36A	APP CRS 356°	Rwy Idg TDZE 1086 Apt Elev 1096	4097
--	------------------------	---	-------------

RNAV (GPS) RWY 36

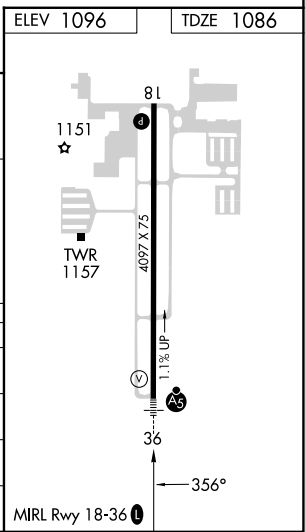
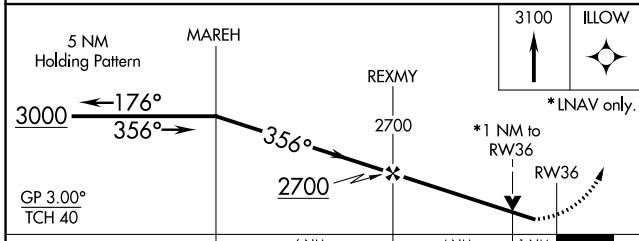
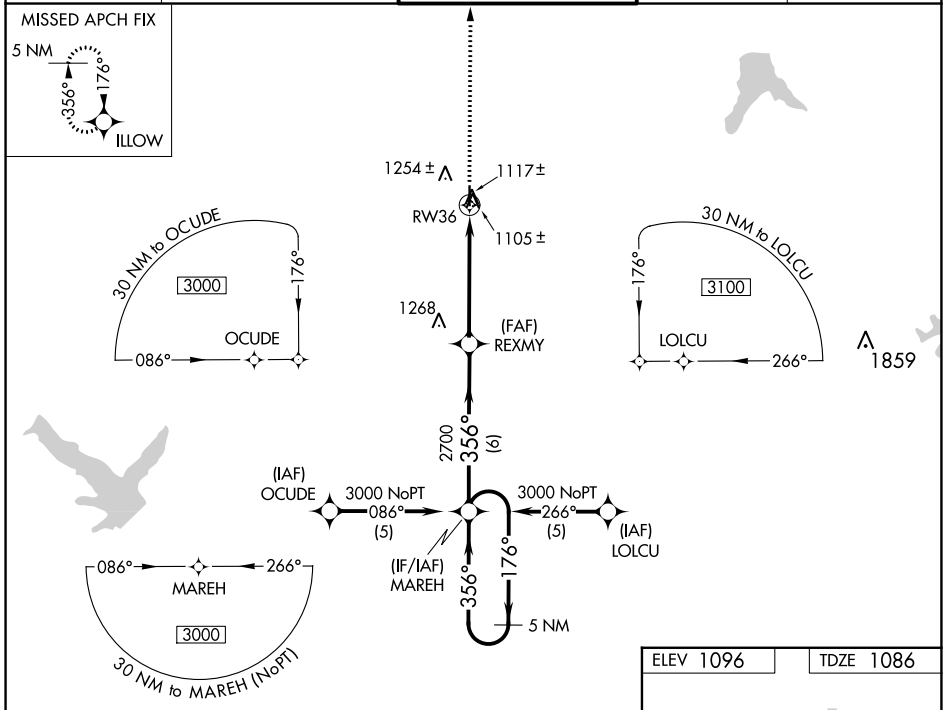
JOHNSON COUNTY EXEC (OJC)

▽ For uncompensated Baro-VNAV systems, LNAV/VNAV NA below -17°C (2°F) or above 95°C (203°F). DME/DME RNP-0.3 NA. Visibility reduction by helicopters NA. For inop MALSRS, increase LPV, LNAV/VNAV and LNAV all Cats visibility to 1 mile.



MISSED APPROACH:
Climb to 3100 direct ILLOW and hold.

ATIS 119.35	KANSAS CITY APP CON 118.9 251.075	EXECUTIVE TOWER* 126.0 (CTAF) 225.4	GND CON 121.6	UNICOM 122.95
-----------------------	---	---	-------------------------	-------------------------



CATEGORY	A	B	C	D
LPV DA	1336-3/4	250 (300-3/4)		NA
LNAV/VNAV DA	1355-3/4	269 (300-3/4)		NA
LNAV MDA	1400-3/4	314 (400-3/4)		NA
C CIRCLING	1620-1	524 (600-1)	1620-1 1/2 524 (600-1 1/2)	NA

NC-2, 30 NOV 2023 to 28 DEC 2023

NC-2, 30 NOV 2023 to 28 DEC 2023