

WAAS CH 82629 W14A	APP CRS 141°	Rwy Idg TDZE Apt Elev	4001 33 34
--	------------------------	-----------------------------	---------------------------------------

RNAV (GPS) RWY 14

OKEECHOBEE COUNTY (OBE)

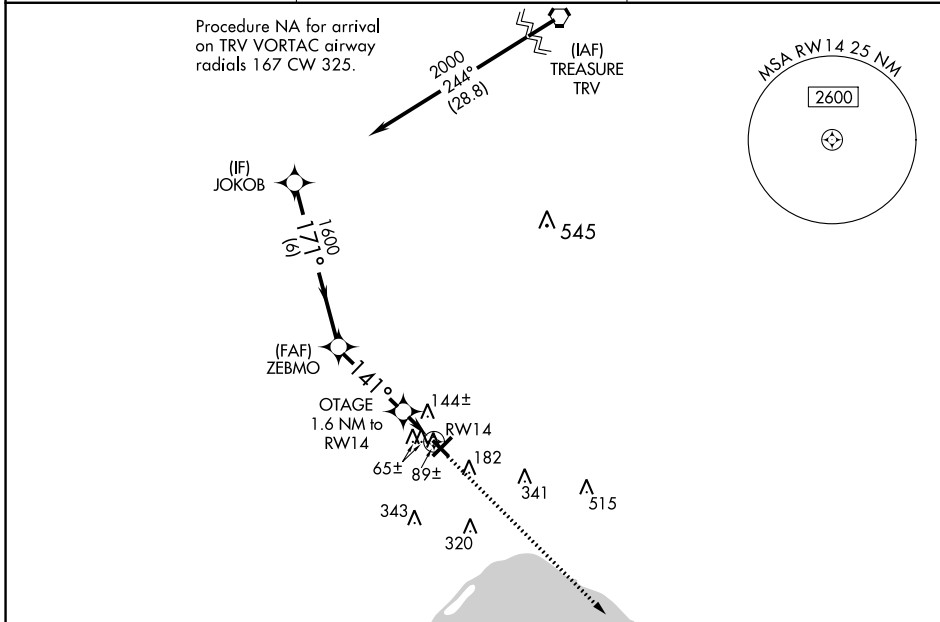
⚠ DME/DME RNP-0.3 NA. Helicopter visibility reduction below 1 SM NA. When local altimeter setting not received, use Vero Beach altimeter setting: increase all MDAs 80 feet, increase LP visibility Cats C and D 1/4 SM, increase LNAV visibility Cats C and D 3/8 SM and increase Circling visibility Cats C and D 1/4 SM. Procedure NA at night.

MISSED APPROACH: Climb to 2000 direct LIYZU and hold.

AWOS-3
118.675

MIAMI CENTER
132.25 370.9

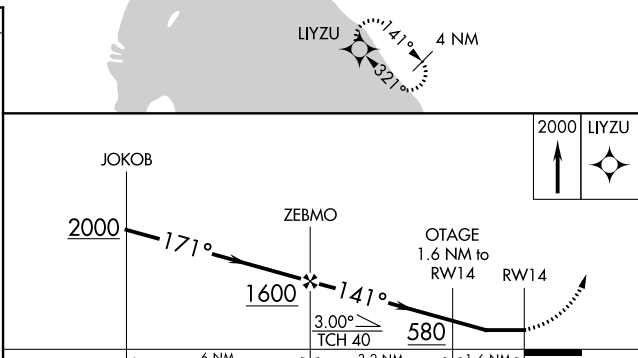
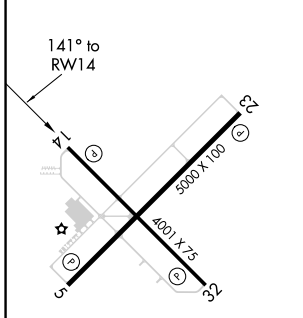
UNICOM
123.0 (CTAF)



SE-3, 22 FEB 2024 to 21 MAR 2024

SE-3, 22 FEB 2024 to 21 MAR 2024

ELEV 34	TDZE 33
---------	---------



CATEGORY	A	B	C	D
LP MDA		340-1	307 (400-1)	
LNAV MDA		400-1	367 (400-1)	
CIRCLING	500-1	466 (500-1)	660-1 3/4 626 (700-1 3/4)	660-2 626 (700-2)

WAAS CH 58117 W23A	APP CRS 231°	Rwy Idg 5000 TDZE 33 Apt Elev 34
--	------------------------	---

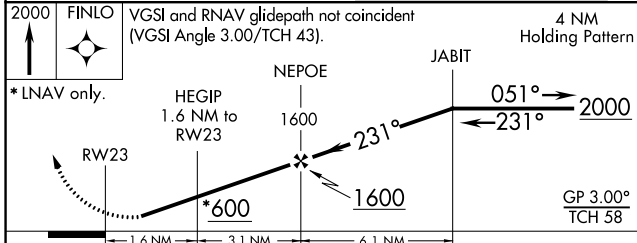
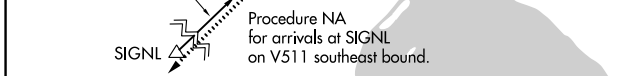
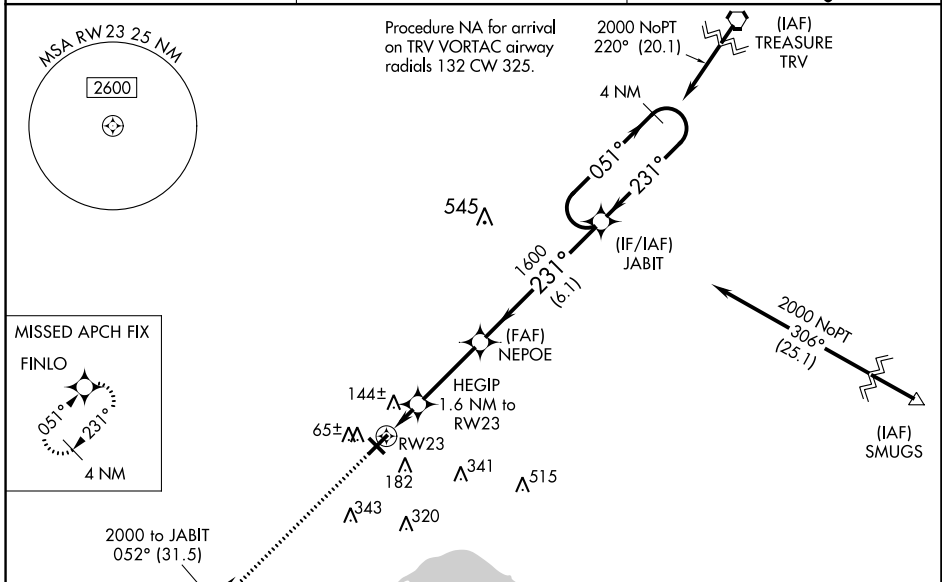
RNAV (GPS) RWY 23

OKEECHOBEE COUNTY (OBE)

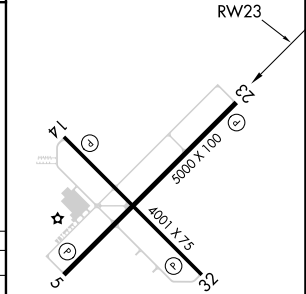
⚠ Baro-VNAV NA when using Vero Beach altimeter setting. For uncompensated Baro-VNAV systems, LNAV/VNAV NA below -2°C (29°F) or above 43°C (109°F). DME/DME RNP-0.3 NA. Helicopter visibility reduction below 1 SM NA. When local altimeter setting not received, use Vero Beach altimeter setting: increase LPV DA to 392 feet and increase visibility all Cats ½ SM; increase LNAV/VNAV DA to 512 feet and increase visibility all Cats ¾ SM; increase all MDAs 80 feet and LNAV visibility Cats C and D ¾ SM and Circling visibility Cats C and D ¼ SM. Procedure NA at night.

MISSED APPROACH:
Climb to 2000 direct FINLO and hold.

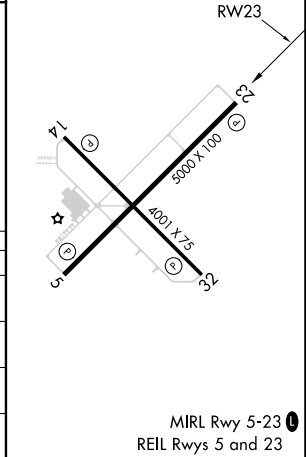
AWOS-3 118.675	MIAMI CENTER 132.25 370.9	UNICOM 123.0 (CTAF)
--------------------------	-------------------------------------	-------------------------------



ELEV 34	TDZE 33
---------	---------



CATEGORY	A	B	C	D
LPV DA		315-1	282 (300-1)	
LNAV/VNAV DA		435-1¼	402 (500-1¼)	
LNAV MDA		400-1	367 (400-1)	
CIRCLING	500-1	466 (500-1)	660-1¾ 626 (700-1¾)	660-2 626 (700-2)



SE-3, 22 FEB 2024 to 21 MAR 2024

SE-3, 22 FEB 2024 to 21 MAR 2024

WAAS CH 93916 W32A	APP CRS 321°	Rwy Idg 4001 TDZE 33 Apt Elev 34
--	------------------------	---

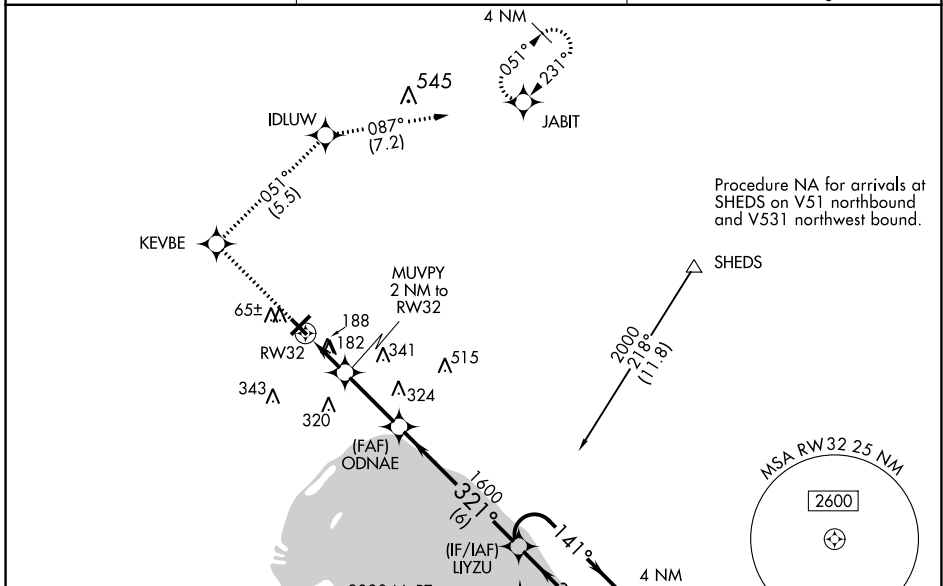
RNAV (GPS) RWY 32

OKEECHOBEE COUNTY (OBE)

⚠ Baro-VNAV NA when using Vero Beach altimeter setting. For uncompensated Baro-VNAV systems, LNAV/VNAV NA below -1.5°C (5°F) or above 48°C (118°F). Helicopter visibility reduction below 1 SM NA. DME/DME RNP-0.3 NA. Procedure NA at night. When local altimeter setting not received, use Vero Beach altimeter setting: increase LPV DA to 360 feet and increase visibility all Cats ¼ SM; increase LNAV/VNAV DA to 575 feet and increase visibility all Cats ¼ SM; increase all MDAs 80 feet and LNAV visibility Cat D and Circling visibility Cats C and D ¼ SM.

MISSED APPROACH: Climb to 2000 direct KEVBE and right turn on track 051° to IDLUW and on track 087° to JABIT and hold.

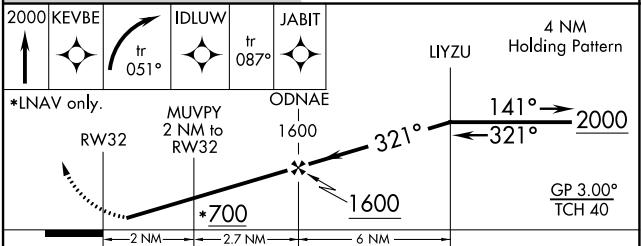
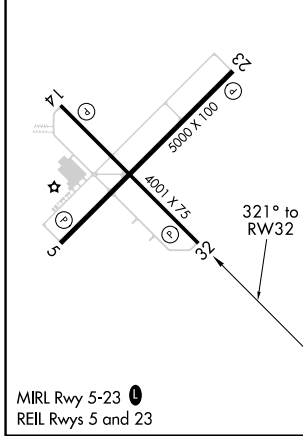
AWOS-3 118.675	MIAMI CENTER 132.25 370.9	UNICOM 123.0 (CTAF) 📶
--------------------------	-------------------------------------	--



Procedure NA for arrivals at SHEDS on V51 northbound and V531 northwest bound.

Procedure NA for arrivals on PHK VOR/DME airway radials 342 CW 010.

ELEV 34	TDZE 33
----------------	----------------



CATEGORY	A	B	C	D
LPV DA	283-1 250 (300-1)			
LNAV/VNAV DA	498-1¾ 465 (500-1¾)			
LNAV MDA	440-1 407 (500-1)	440-1¼ 407 (500-1¼)		
CIRCLING	500-1 466 (500-1)	660-1¾ 626 (700-1¾)	660-2 626 (700-2)	

SE-3, 22 FEB 2024 to 21 MAR 2024

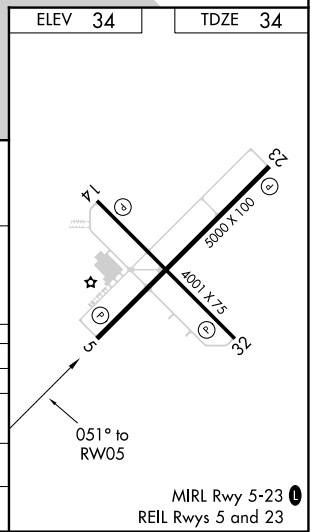
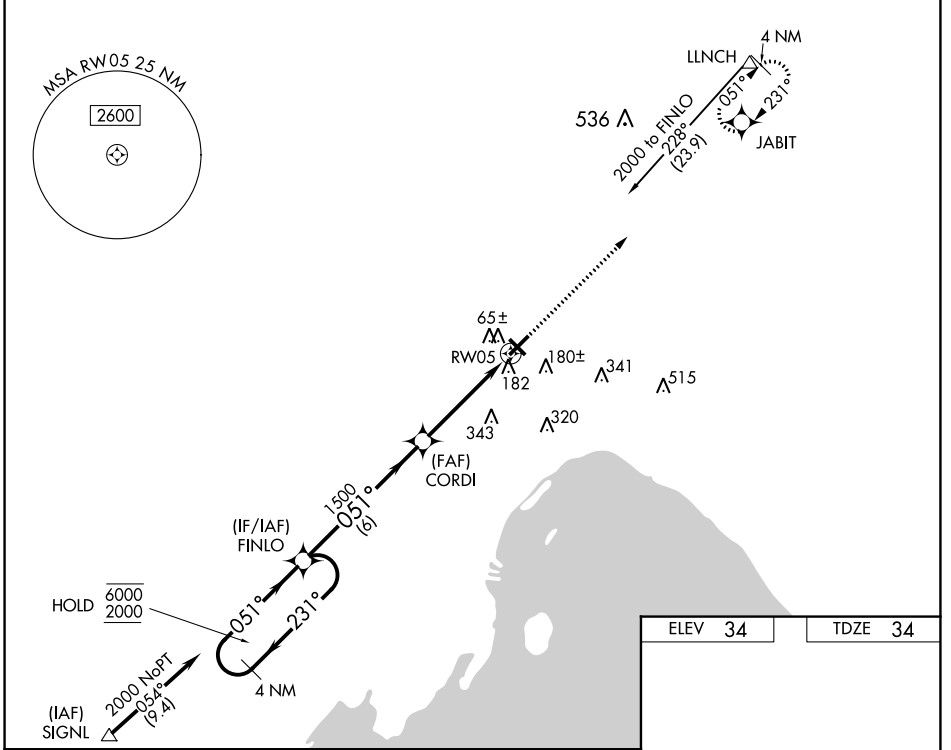
SE-3, 22 FEB 2024 to 21 MAR 2024

WAAS CH 53517 W05A	APP CRS 051°	Rwy Idg 5000 TDZE 34 Apt Elev 34
--	------------------------	---

RNAV (GPS) RWY 5

OKEECHOBEE COUNTY (OBE)

RNP APCH - GPS.		MISSED APPROACH: Climb to 2000 direct JABIT and hold.
<p>⚠ Circling Rwy 14, 23, 32 NA at night. Rwy 5 helicopter visibility reduction below 3/4 SM NA. For uncompensated Baro-VNAV systems, LNAV/VNAV NA below -15°C or above 54°C.</p>		
AWOS-3 118.675	MIAMI CENTER 132.25 370.9	UNICOM 123.0 (CTAF)



4 NM Holding Pattern		FINLO		2000	JABIT
6000 ← 231°		← 051°		↑	⬤
2000		051°		CORDI	
GP 3.00°		1500		1.3 NM to RW05	
TCH 40		1500		RW05	
		6 NM		3.1 NM	
		1.3			
CATEGORY	A	B	C	D	
LPV DA		284-3/4	250 (300-3/4)		
LNAV/VNAV DA		455-1 1/4	421 (500-1 1/4)		
LNAV MDA	480-1	446 (500-1)	480-1 3/8	446 (500-1 3/8)	
C CIRCLING	500-1	466 (500-1)	660-1 3/4 626 (700-1 3/4)	660-2 626 (700-2)	

SE-3, 22 FEB 2024 to 21 MAR 2024

SE-3, 22 FEB 2024 to 21 MAR 2024