

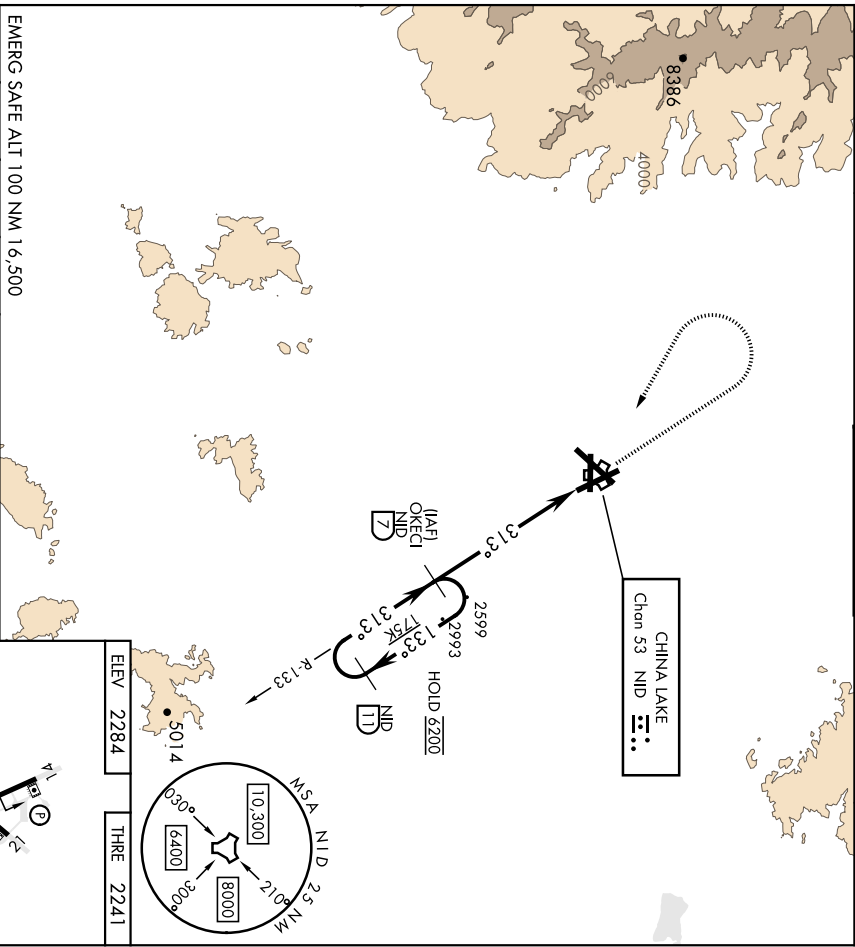
RIDGECREST, CALIFORNIA

TACAN M/D Chan 53	APCH CRS 313°	Rev./Idg THRE Appl Elev 2284	9013 2241 2284
----------------------	------------------	------------------------------------	----------------------

AL-914 (USN) CHINA LAKE NAWs (ARBITRAGE FLD) (KNID)

COPTER TACAN RWY 32

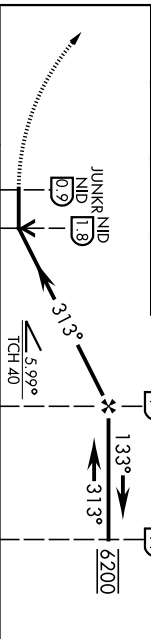
RADAR required Limit final approach airspeed to 80 KIAS.		MISSED APPROACH: Climb to 3600, then climbing left turn to 6200, intercept M/D TACAN R-133 to OKECI and hold. Continue climb in hold.	
ATIS ★ 322.375	JOSHUA APP CON/DEP CON 133.65 348.7	TOWER ★ 120.15 340.2	GND CON 360.2
		CLNC DEL 274.7	



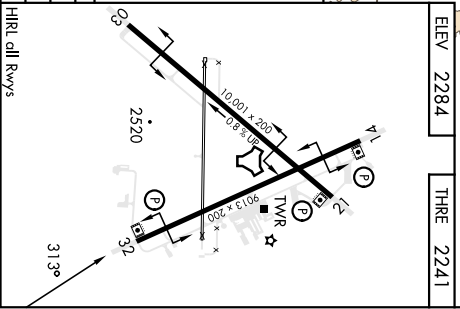
3600	6200	OKECI	OKECI
↓	↘	M/D 7	M/D 7
	↘	JUNKR	M/D 7
	↘	M/D 7	M/D 7
	↘	M/D 7	M/D 7

EMERG SAFE ALT 100 NM 16,500

VGSI and descent angles not coincident



CATEGORY	2860-1	COPTER	(600-1)
S-32	619		
CIRCLING	2860-1	576	(600-1)



ELEV 2284	THRE 2241
-----------	-----------

RIDGECREST, CALIFORNIA

35° 41' N - 117° 42' W

CHINA LAKE NAWs (ARBITRAGE FLD) (KNID)

Orig 20APR23

COPTER TACAN RWY 32

RIDGECREST, CALIFORNIA

HI-TACAN RWY 32

TACAN NID Chan 53	APCH CRS 313°	Rwy ldg TDZE 2241 Arprt Elev 2284
-------------------	---------------	--------------------------------------

AL-914 (USN) CHINA LAKE NAW'S (ARMITAGE FLD) (KNID)

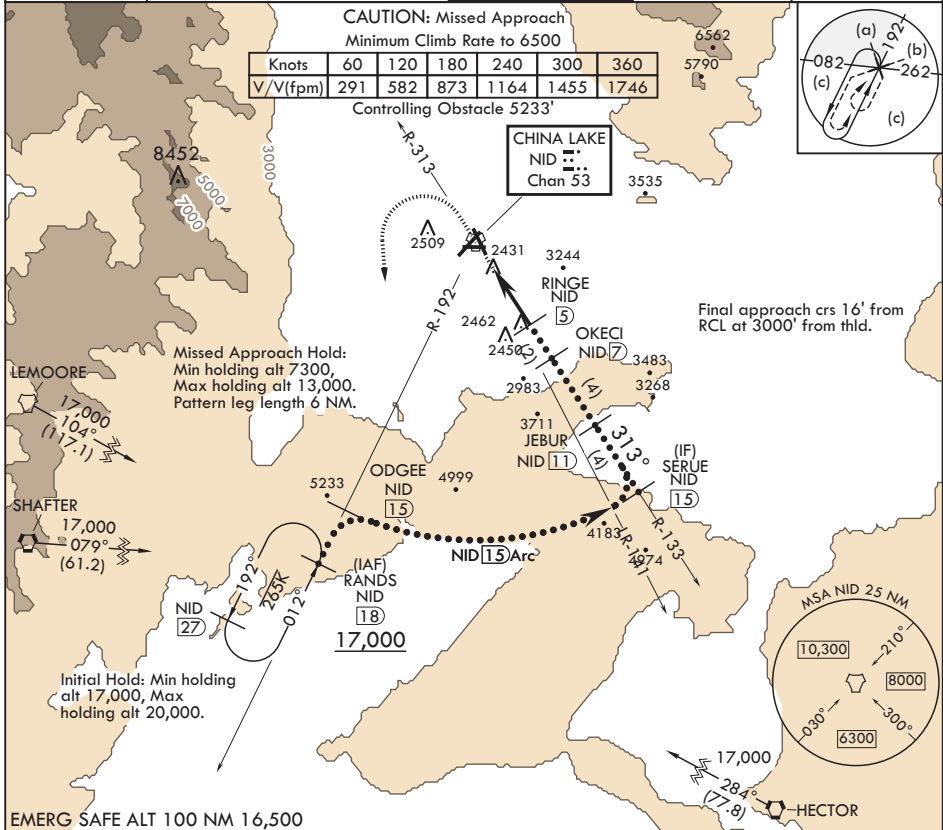
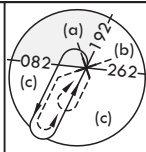
MISSED APPROACH: Climb to 3600 then a climbing left turn to 7300 to intercept China Lake TACAN R-192 to RANDS and hold.

ATIS★ 322.375	JOSHUA APP CON/DEP CON 133.65 348.7	TOWER★ 120.15 340.2	GND CON 360.2	CLNC DEL 274.7
---------------	-------------------------------------	---------------------	---------------	----------------

CAUTION: Missed Approach
Minimum Climb Rate to 6500

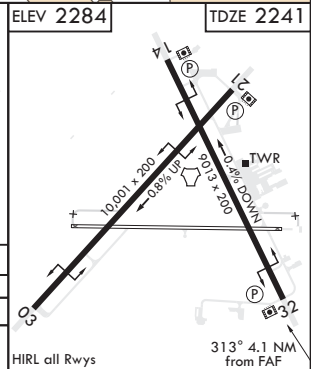
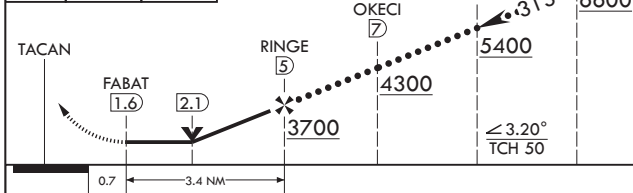
Knots	60	120	180	240	300	360
V/V(fpm)	291	582	873	1164	1455	1746

Controlling Obstacle 5233'



EMERG SAFE ALT 100 NM 16,500

3600	7300	TDZE 2241
NID R-192	NID R-192	ELEV 2284



CATEGORY	C	D	E
S-32	2720-1½	479	(500-1½)
CIRCLING	2820-1½ 536 (600-1½)	3500-3 1216 (1300-3)	NA

RIDGECREST, CALIFORNIA

35°41'N - 117°42'W

CHINA LAKE NAW'S (ARMITAGE FLD) (KNID)

Amdt 5 10SEP20

HI-TACAN RWY 32

SW-3, 22 FEB 2024 to 21 MAR 2024

SW-3, 22 FEB 2024 to 21 MAR 2024

TACAN NID Chan 53	APCH CRS 034°	Req'd Idg TDZE Elev	10,001 2284 2284
----------------------	------------------	---------------------------	------------------------

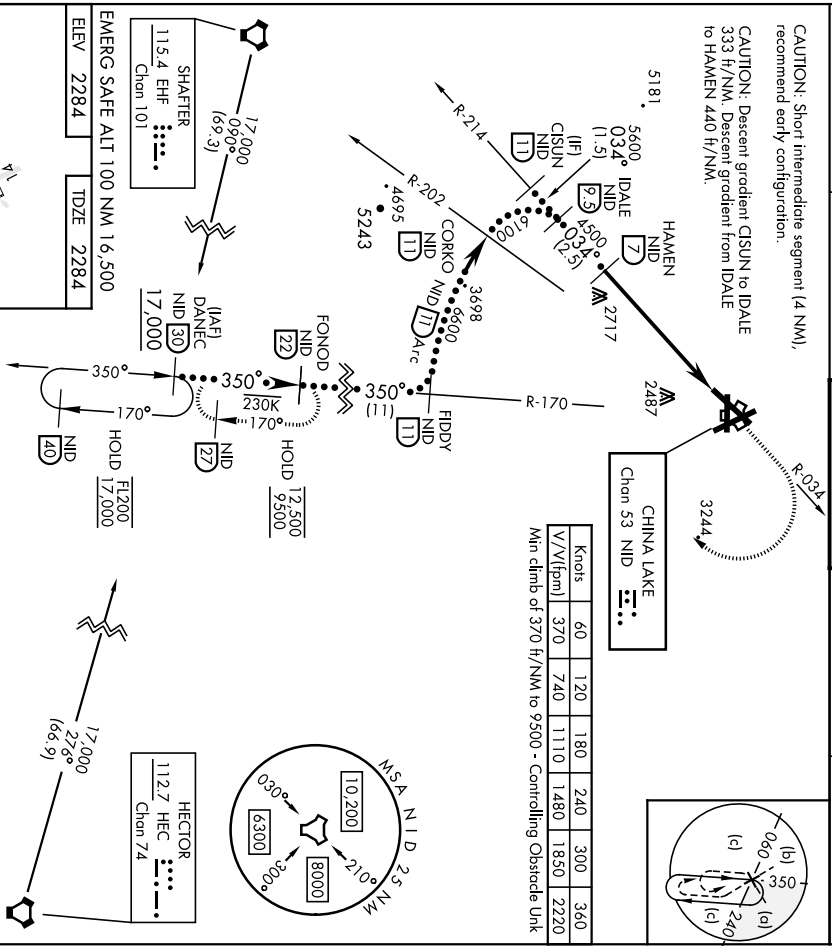
[USN] AL-914 (CV) CHINA LAKE NAWs (ARMTAGE FLD) (KNID)

MISSED APPROACH: Climb to 3600 then climbing right turn to 9500, intercept NID TACAN R-170 to FONOD and hold. Minimum climb gradient 370 ft/NM to 9500.

ATIS * 322.375	JOSHUA APP/DEP CON 133.65 348.7	TOWER * 120.15 340.2	GND CON 360.2	CLNC DEL 274.7
-------------------	------------------------------------	-------------------------	------------------	-------------------

CAUTION: Short intermediate segment (4 NM), recommend early configuration.

CAUTION: Descent gradient: GISUN to IDALE 333 ft/NM, Descent gradient from IDALE to HAMEN 440 ft/NM.



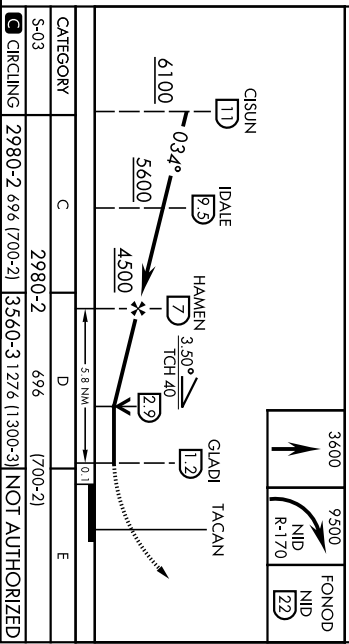
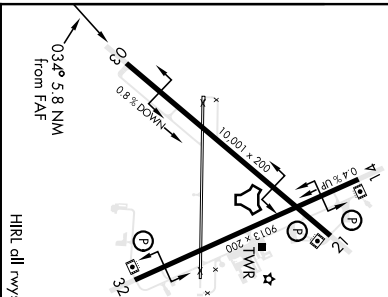
EMERG SAFE ALT 100 NM 16,500
ELEV 2284 TDZE 2284

SHALTER
115.4 EHF
Chan 101

(IAF) DANFEC
NID 30
17,000

HOLD F2000
17,000

HECTOR
112.7 HEC
Chan 74



CATEGORY	C	D	E
S-03	2980-2	696	1700-21

RIDGECREST, CALIFORNIA
Orig 12AUG21
TERPS
35° 41' N - 117° 42' W CHINA LAKE NAWs (ARMTAGE FLD) (KNID)
HI-TACAN Z RWY 03

RIDGECREST, CALIFORNIA

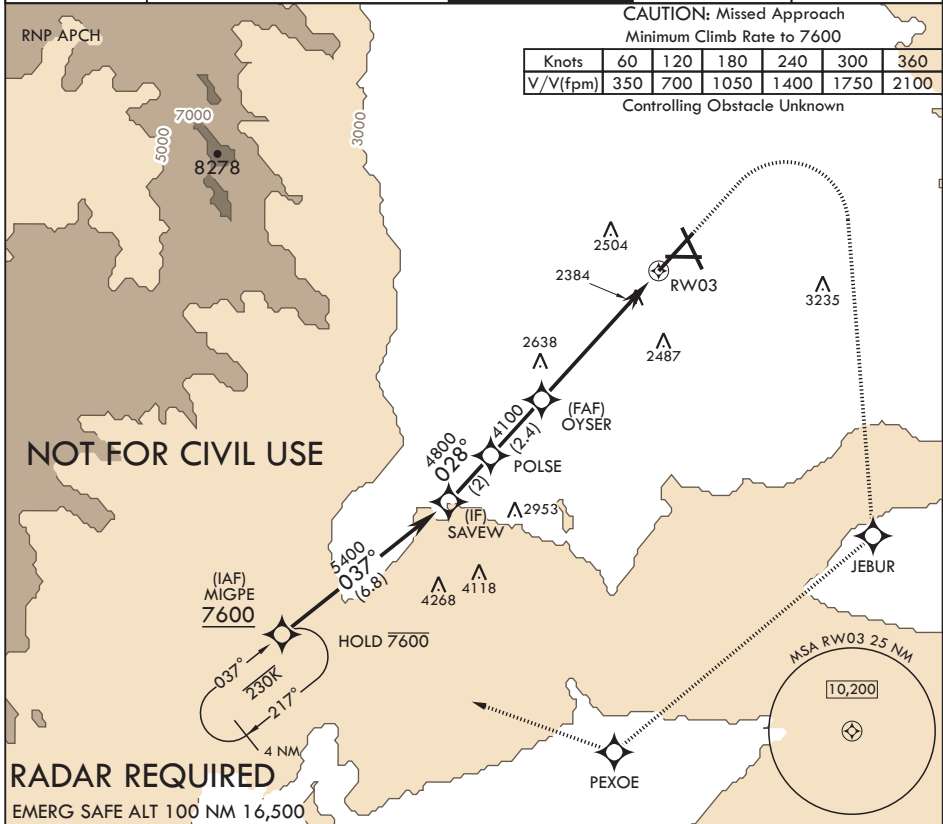
RNAV (GPS) RWY 03

APCH CRS	Rwy Idg	10,001
028°	TDZE	2284
	Arprt Elev	2284

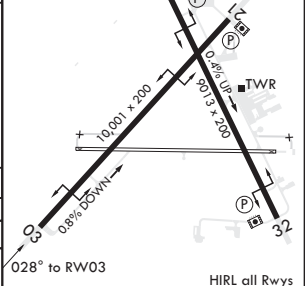
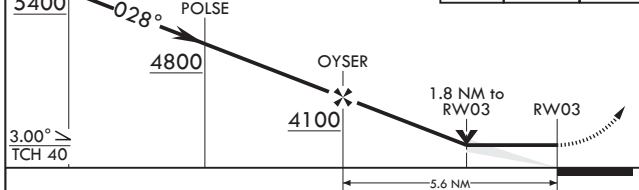
AL-914 (USN) CHINA LAKE NAWS (ARMITAGE FLD) (KNID)

MISSED APPROACH: (Do not exceed 185 KIAS until initial turn completion.) Climb to 3600 then climbing right turn to 7600 direct JEBUR, track 216° to PEXOE, track 275° to MIGPE and hold. Missed Approach requires a minimum climb of 350 ft per NM to 7600.

ATIS★	JOSHUA APP CON/DEP CON	TOWER★	GND CON	CLNC DEL
322.375	133.65 348.7	120.15 340.2	360.2	274.7



SAVEW	3600	7600	JEBUR	ELEV 2284	TDZE 2284
5400	crs 028°				



CATEGORY	A	B	C	D
LNAV MDA	2900-1 616 (700-1)	2900-1¼ 616 (700-1¼)	2900-1¼ 616 (700-1¼)	3560-3 1276 (1300-3)
☐ CIRCLING	2900-1 616 (700-1)			

RIDGECREST, CALIFORNIA

35°41'N - 117°42'W

CHINA LAKE NAWS (ARMITAGE FLD) (KNID)

Orig 12AUG21
TERPS

RNAV (GPS) RWY 03

SW-3, 22 FEB 2024 to 21 MAR 2024

SW-3, 22 FEB 2024 to 21 MAR 2024

RIDGECREST, CALIFORNIA

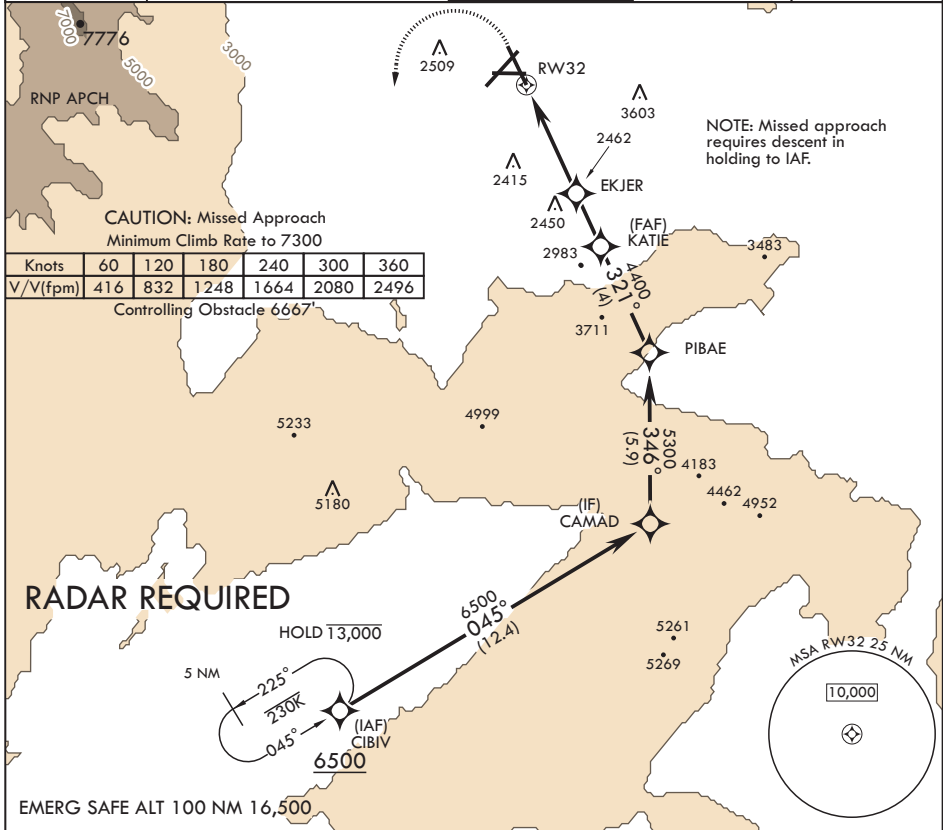
RNAV (GPS) RWY 32

APCH CRS	Rwy Idg	9013
321°	TDZE	2241
	Arprt Elev	2284

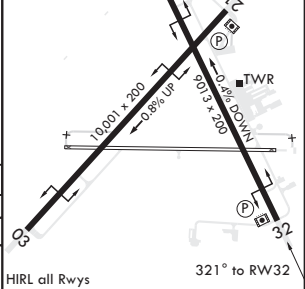
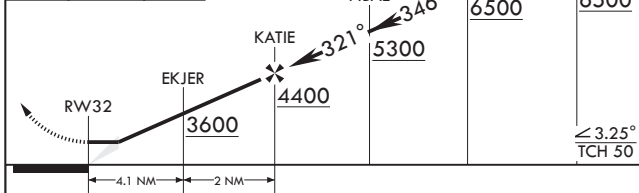
AL-914 (USN) CHINA LAKE NAWS (ARMITAGE FLD) (KNID)

MISSED APPROACH: Climb to 2800 then climbing left turn to 8100 direct CIBIV and hold, continue climb-in-hold to 8100.

ATIS★	JOSHUA APP CON/DEP CON	TOWER★	GND CON	CLNC DEL
322.375	133.65 348.7	120.15 340.2	360.2	274.7



2800	8100	CIBIV	ELEV 2284	TDZE 2241
------	------	-------	-----------	-----------



CATEGORY	A	B	C	D
RNAV MDA	2660-1 419 (400-1)	2660-1½ 419 (400-1½)	2820-1½ 536 (600-1½)	3520-3 1236 (1300-3)
CIRCLING	2740-1 456 (500-1)	2820-1 536 (600-1)	2820-1½ 536 (600-1½)	3520-3 1236 (1300-3)

RIDGECREST, CALIFORNIA 35°41'N - 117°42'W CHINA LAKE NAWS (ARMITAGE FLD) (KNID)

Amdt 5 10SEP20

RNAV (GPS) RWY 32

SW-3, 22 FEB 2024 to 21 MAR 2024

SW-3, 22 FEB 2024 to 21 MAR 2024

RIDGECREST, CALIFORNIA

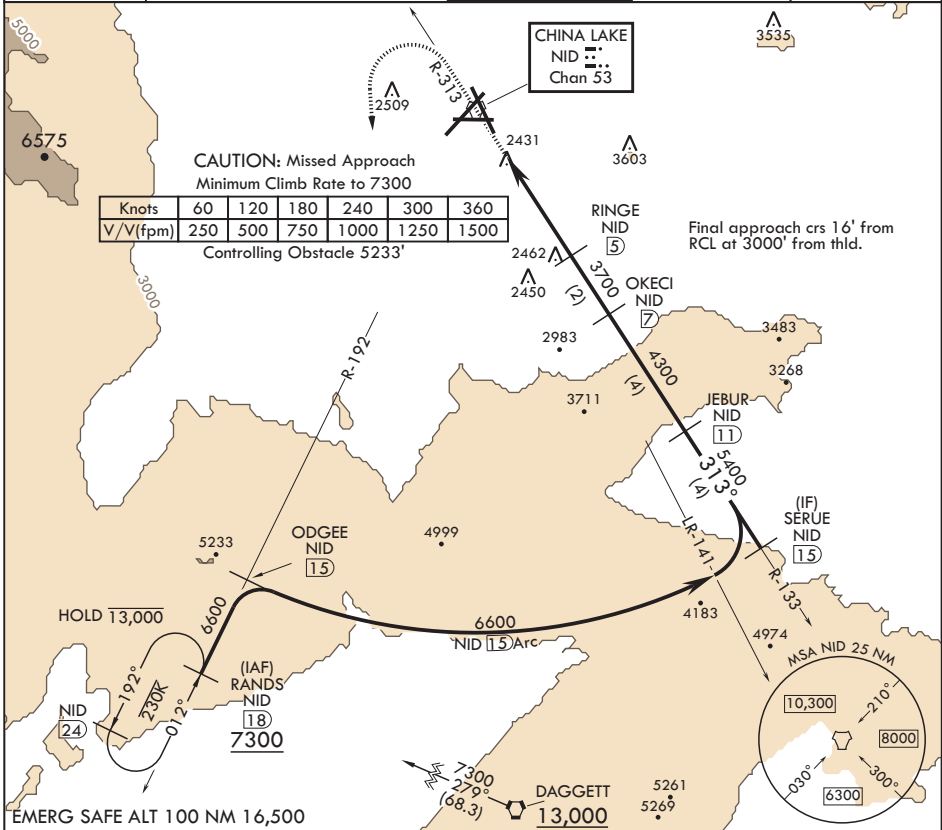
TACAN RWY 32

TACAN NID Chan 53	APCH CRS 313°	Rwy ldg TDZE Arprt Elev	9013 2241 2284
----------------------	------------------	----------------------------	---

AL-914 (USN) CHINA LAKE NAWS (ARMITAGE FLD) (KNID)

MISSED APPROACH: Climb to 3600 then a climbing left turn to 7300 to intercept China Lake TACAN R-192 to RANDS and hold.

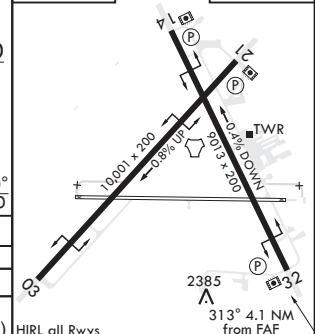
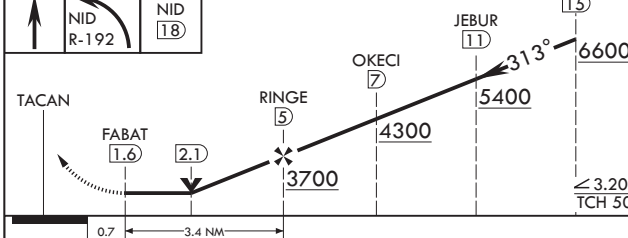
ATIS★ 322.375	JOSHUA APP CON/DEP CON 133.65 348.7	TOWER★ 120.15 340.2	GND CON 360.2	CLNC DEL 274.7
-------------------------	---	-------------------------------	-------------------------	--------------------------



SW-3, 22 FEB 2024 to 21 MAR 2024

SW-3, 22 FEB 2024 to 21 MAR 2024

EMERG SAFE ALT 100 NM 16,500



CATEGORY	A	B	C	D
S-32	2720-1 479 (500-1)	2720-1½ 479 (500-1½)	2720-1¾ 479 (500-1¾)	2720-2 479 (500-2)
CIRCLING	2740-1 456 (500-1)	2820-1 536 (600-1)	2820-1½ 536 (600-1½)	3500-3 1216 (1300-3)

RIDGECREST, CALIFORNIA 35°41'N - 117°42'W CHINA LAKE NAWS (ARMITAGE FLD) (KNID)

Amdt 5 10SEP20

TACAN RWY 32

TACAN Y RWY 03

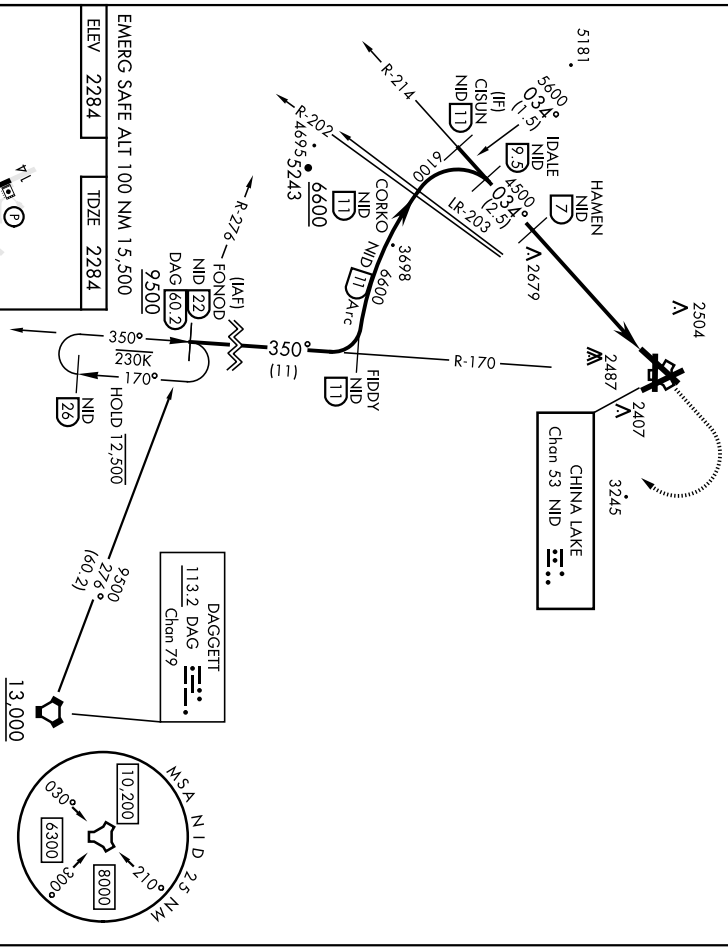
TACAN NID Chan 53	APCH CRS 034°	Req'd Idg TDZE Appt Elev	110 001 2284 2284
----------------------	------------------	--------------------------------	--

[USN] A1-91.4 (CV) CHINA LAKE NAWMS (ARBITRAGE FLD) (KNID)

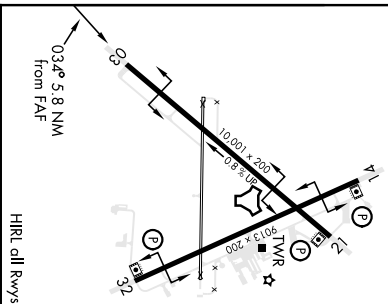
RADAR required: ▼		MISSED APPROACH: Climb to 3600 then climbing right turn to 9500 to intercept NID TACAN R-170 to FONOD and hold. Minimum climb gradient 370 to 9500.	
--------------------------	--	--	--

ATIS ★ 322.375	JOSHUA APP/DEF CON 133.65 348.7	TOWER ★ 120.15 340.2	GND CON 360.2	CLNC DEL 274.7
--------------------------	---	--------------------------------	-------------------------	--------------------------

CAUTION: Short Intermediate Segment (4 NM), recommend early configuration.
CAUTION: DG from GISUN to IDALE 333 ft/NM.
IDALE to HAMEN 440 ft/NM.



EMERG SAFE ALT 100 NM 15,500
ELEV 2284 TDZE 2284



CATEGORY	A	B	C	D
	303	2980-1	2980-2	2980-2
S-03	2980-1	696 (700-1)	2980-2	696 (700-2)
	2980-1	696 (700-1)	2980-2	3560-3
CIRCLING	5.8 NM			
	2980-1	696 (700-1)	2980-2	1276 (1300-3)

RIDGECREST, CALIFORNIA
Orig 12AUG21 TERPS
35° 41' N - 117° 42' W CHINA LAKE NAWMS (ARBITRAGE FLD) (KNID)
TACAN Y RWY 03