

PATUXENT RIVER, MARYLAND

HI-TACAN Y RWY 14

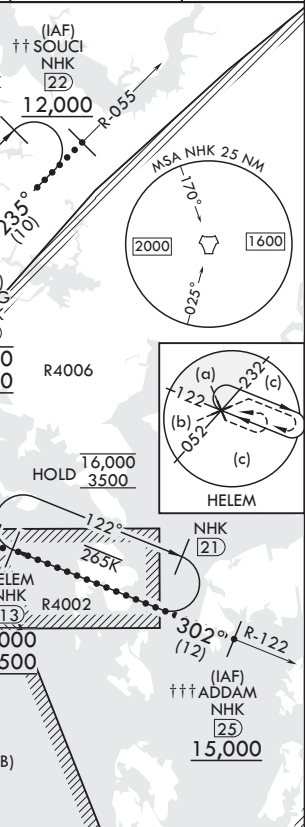
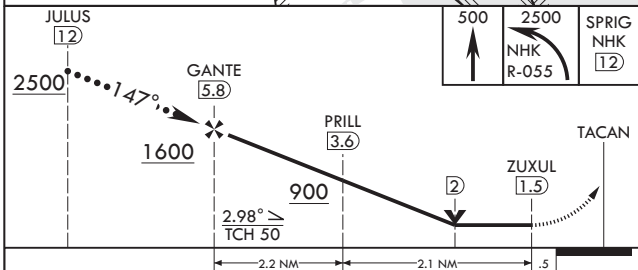
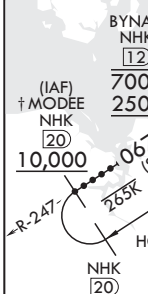
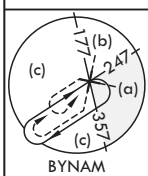
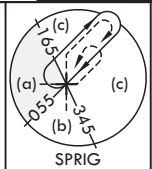
TACAN NHK Chan 39 (Y)	APCH CRS 147°	Rwy ldg TDZE 27 Arprt Elev 39	9732
-----------------------	---------------	----------------------------------	------

- (USN) PATUXENT RIVER NAS (TRAPNELL FLD) (KNHK)

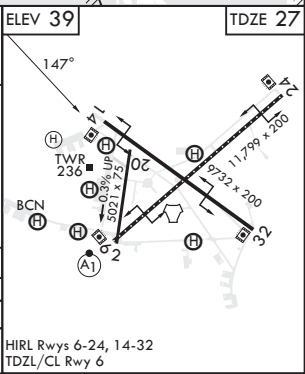
▽ MISSED APPROACH: Climb to 500, then climbing left turn to 2500 on NHK TACAN R-055 to SPRIG and hold.

ATIS 322.425	APP CON/DEP CON 121.0 250.3	TOWER 123.7 343.65	GND CON 120.6 336.4	CLNC DEL 135.2 316.125	ASR/PAR
--------------	-----------------------------	--------------------	---------------------	------------------------	---------

253 For LOCAL USE ONLY
 † 10,000 or as assigned
 †† 12,000 or as assigned
 ††† 15,000 or as assigned



CATEGORY	C	D	E
S-14	400-1	373	(400-1)
C CIRCLING	620-1½ 581 (600-1½)	680-2 641 (700-2)	800-2¾ 761 (800-2¾)



PATUXENT RIVER, MARYLAND 38°17'N - 76°25'W PATUXENT RIVER NAS (TRAPNELL FLD) (KNHK)

Orig 02DEC21

HI-TACAN Y RWY 14

NE-3, 22 FEB 2024 to 21 MAR 2024

NE-3, 22 FEB 2024 to 21 MAR 2024

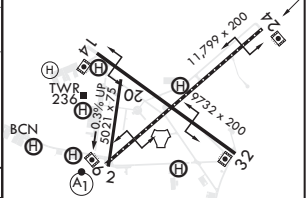
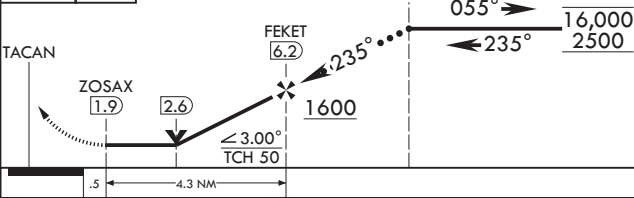
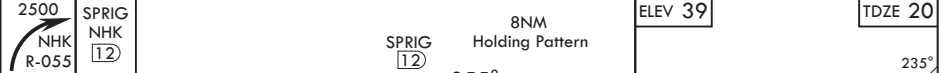
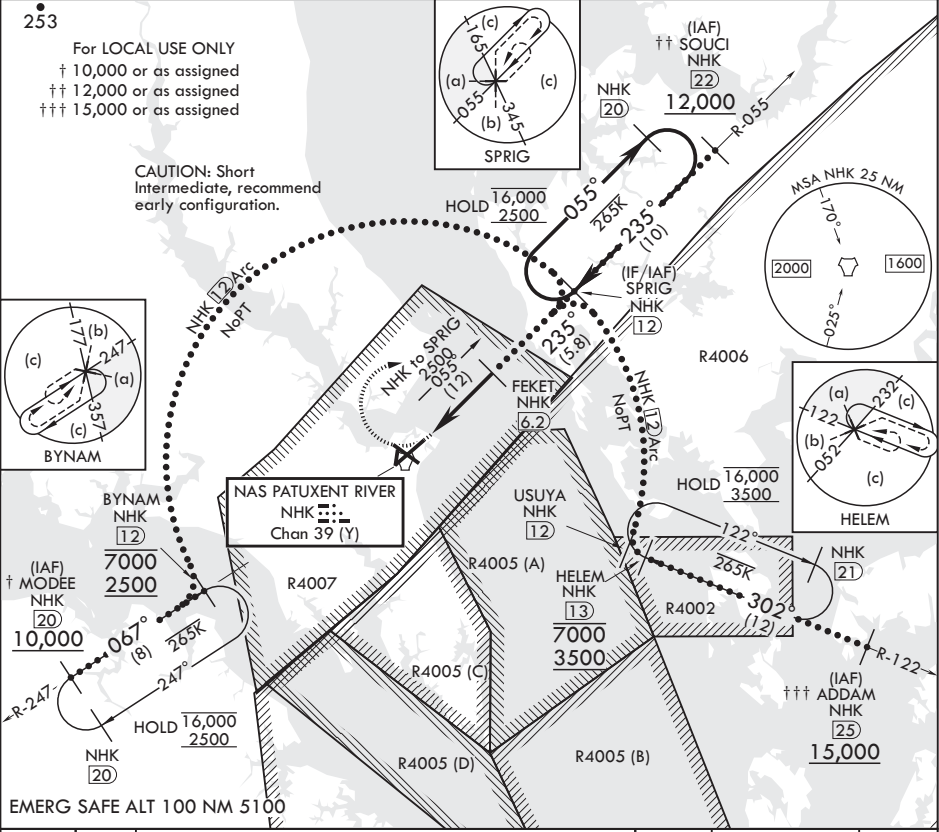
HI-TACAN Y RWY 24

TACAN NHK Chan 39 (Y)	APCH CRS 235°	Rwy ldg TDZE 20 Arprt Elev 39	11,799
-----------------------	---------------	----------------------------------	--------

(USN) PATUXENT RIVER NAS (TRAPNELL FLD) (KNHK)

⚠ MISSED APPROACH: Climbing right turn to 2500 and intercept NHK TACAN R-055 to SPRIG and hold.

ATIS 322.425	APP CON/DEP CON 121.0 250.3	TOWER 123.7 343.65	GND CON 120.6 336.4	CLNC DEL 135.2 316.125	ASR/PAR
--------------	-----------------------------	--------------------	---------------------	------------------------	---------



CATEGORY	C	D	E
S-24	440-1½	420	(500-1½)
CIRCLING	620-1½ 581 (600-1½)	680-2 641 (700-2)	800-2¾ 761 (800-2¾)

HIRL Rwy 6-24, 14-32
TDZL/CL Rwy 6

NE-3, 22 FEB 2024 to 21 MAR 2024

NE-3, 22 FEB 2024 to 21 MAR 2024

PATUXENT RIVER, MARYLAND

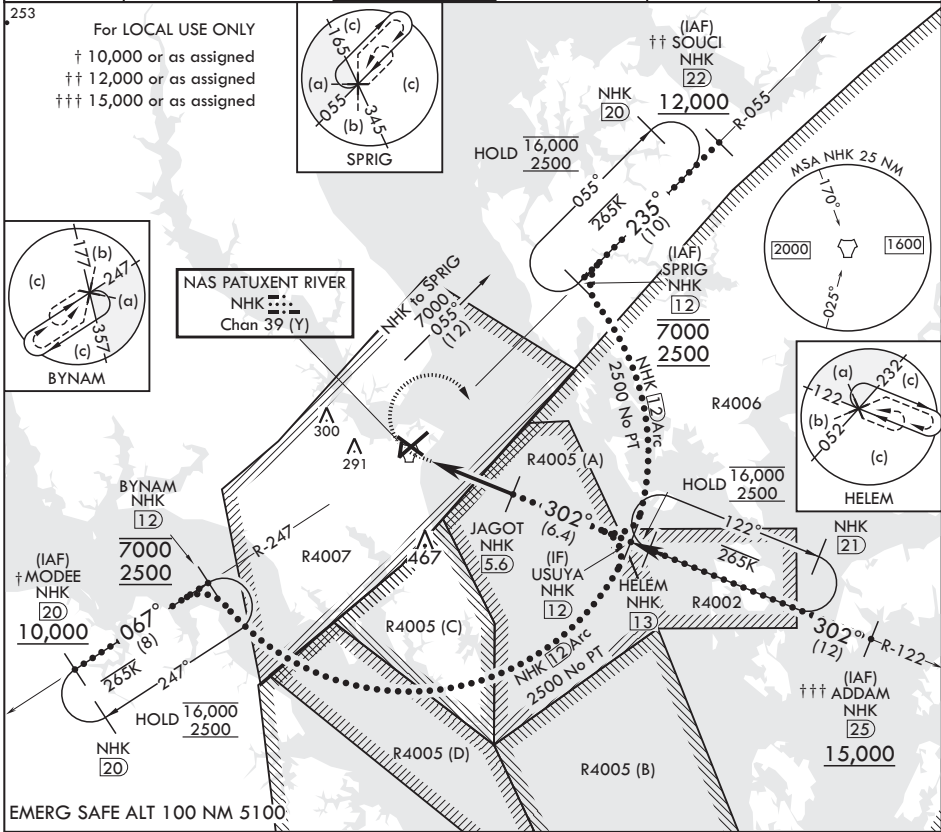
HI-TACAN Y RWY 32

TACAN NHK Chan 39 (Y)	APCH CRS 302°	Rwy ldg TDZE 9732
		Arprt Elev 39

(USN) PATUXENT RIVER NAS (TRAPNELL FLD) (KNHK)

MISSED APPROACH: Climb to 500, then climbing right turn to 2500 on NHK TACAN R-122 to HELEM and hold.

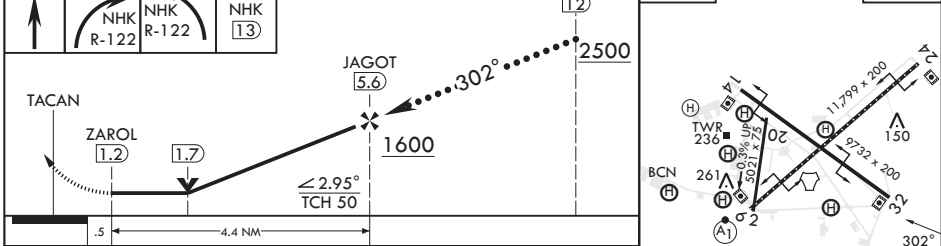
ATIS 322.425	APP CON/DEP CON 121.0 250.3	TOWER 123.7 343.65	GND CON 120.6 336.4	CLNC DEL 135.2 316.125	ASR/PAR
--------------	-----------------------------	--------------------	---------------------	------------------------	---------



NE-3, 22 FEB 2024 to 21 MAR 2024

NE-3, 22 FEB 2024 to 21 MAR 2024

500	2500	HELEM NHK 13	USUYA 12	ELEV 39	TDZE 18
-----	------	--------------	----------	---------	---------



CATEGORY	C	D	E
S-32	400-1½	382	(400-1½)
C CIRCLING	620-1½ 581 (600-1½)	680-2 641 (700-2)	800-2¾ 761 (800-2¾)

HIRL Rwy 6-24, 14-32
 TDZL/CL Rwy 6

PATUXENT RIVER, MARYLAND

38°17'N - 76°25'W PATUXENT RIVER NAS (TRAPNELL FLD) (KNHK)

Orig 02DEC21

HI-TACAN Y RWY 32

PATUXENT RIVER, MARYLAND

HI-TACAN Y RWY 6

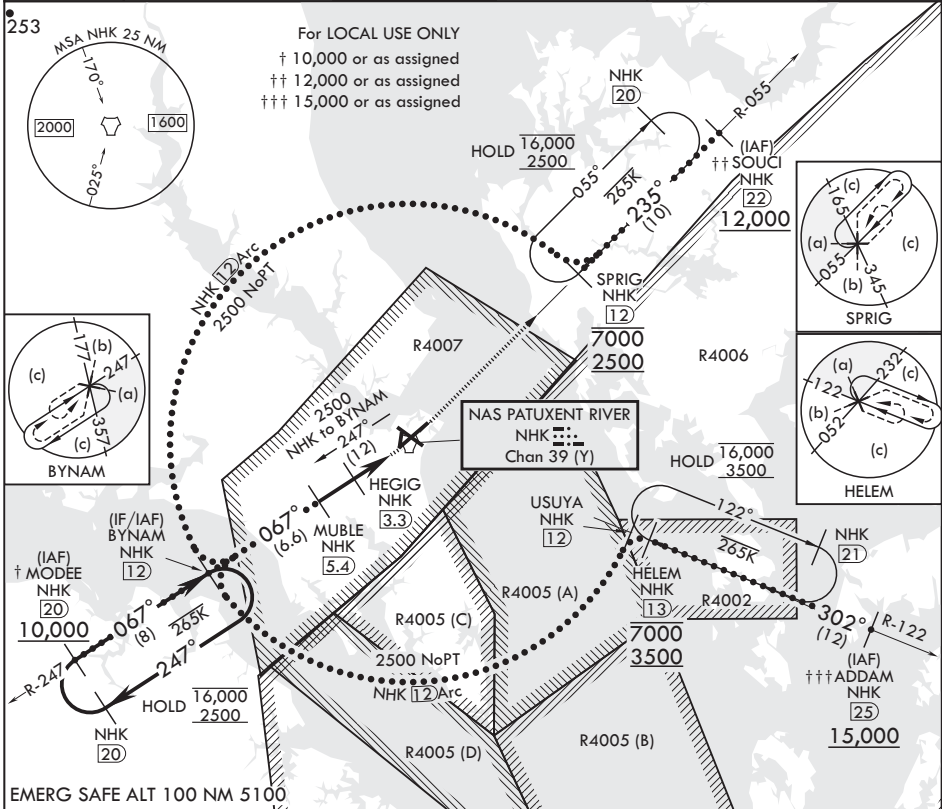
TACAN NHK Chan 39 (Y)	APCH CRS 067°	Rwy ldg TDZE 11,799 39	Arprt Elev 39
-----------------------	---------------	------------------------	---------------

(USN) PATUXENT RIVER NAS (TRAPNELL FLD) (KNHK)

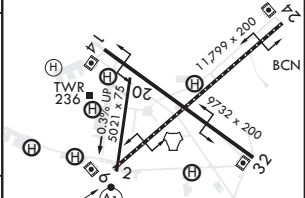
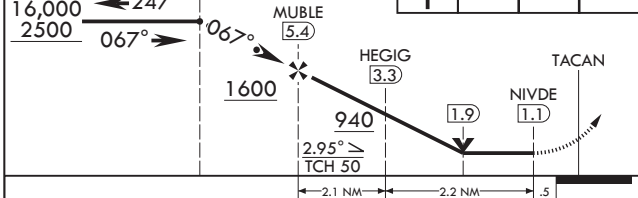
▼ * When ALS inop, increase CAT CDE vis to 1 3/8 miles.

ALSF-1 MISSED APPROACH: Climb to 2500 direct NHK TACAN and NHK R-055 to SPRIG and hold.

ATIS 322.425	APP CON/DEP CON 121.0 250.3	TOWER 123.7 343.65	GND CON 120.6 336.4	CLNC DEL 135.2 316.125	ASR/PAR
--------------	-----------------------------	--------------------	---------------------	------------------------	---------



8NM Holding Pattern	BYNAM NHK 12	2500	NHK	NHK R-055	SPRIG NHK 12	ELEV 39	TDZE 39
---------------------	--------------	------	-----	-----------	--------------	---------	---------



CATEGORY	C	D	E	
S-6*	520-1	481	(500-1)	
Ⓢ CIRCLING	620-1½ 581 (600-1½)	680-2 641 (700-2)	800-2¾ 761 (800-2¾)	HIRL Rwy's 6-24, 14-32 TDZL/CL Rwy 6

PATUXENT RIVER, MARYLAND 38°17'N - 76°25'W PATUXENT RIVER NAS (TRAPNELL FLD) (KNHK)

HI-TACAN Y RWY 6

NE-3, 22 FEB 2024 to 21 MAR 2024

NE-3, 22 FEB 2024 to 21 MAR 2024

LOC/DME I-NHK 108.7

ARCH CRS 059°
Chn 24

[USN]

ILS or LOC/DME RWY 6

PATUXENT RIVER NAS (TRAPNELL FIELD) (KNHK)

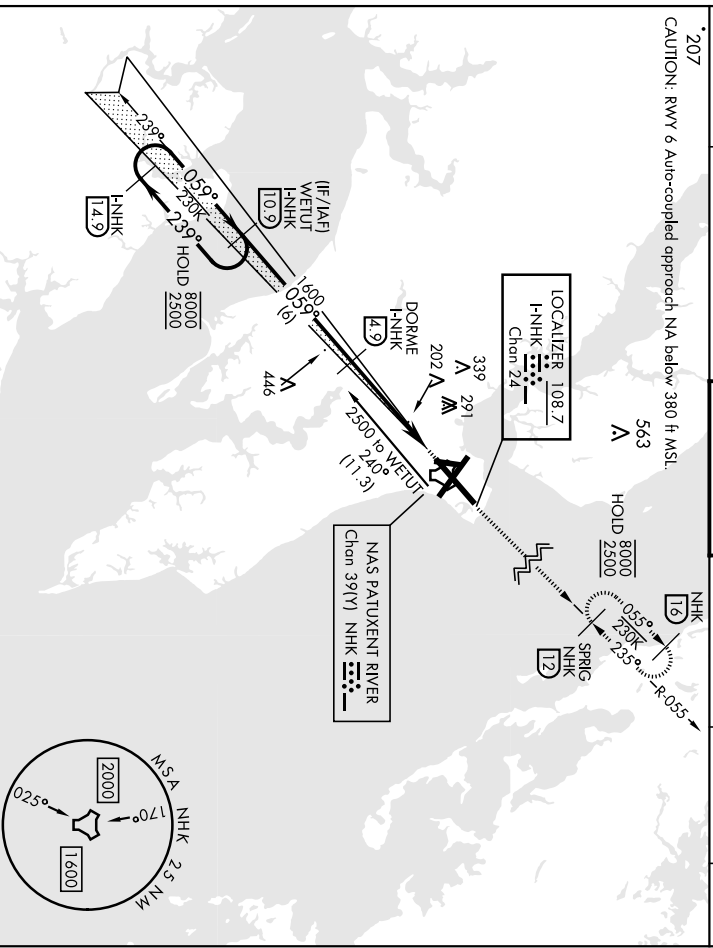
* When ALS inop, increase vis to 3/4 mile.
** When ALS inop, increase CAT AB vis to 1 mile;
CAT CD vis to 1 1/2 miles.

ALSF-1
[A1]

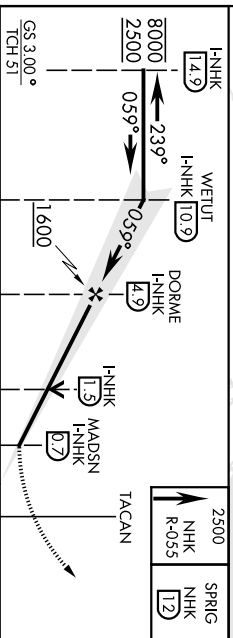
MISSED APPROACH: Climb to 2500 heading 059° and
Intercept NHK TACAN R-055 to SPRIG and hold.

ATIS 322.425	APP/DEP CON 121.0 250.3	TOWER 123.7 343.65	GND CON 120.6 336.4	CLNC DEL 135.2 316.125	ASR/PAR
-----------------	----------------------------	-----------------------	------------------------	---------------------------	---------

CAUTION: RWY 6 Auto-coupled approach NA below 380 ft MSL.

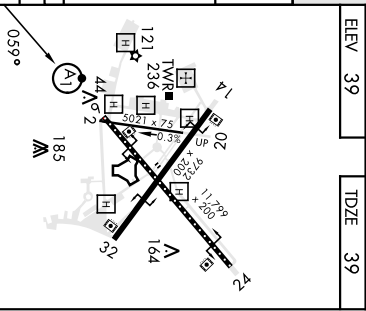


EMERG SAFE ALT 100 NM 5100



GS 3.000° TCH 51	1600	4.2 NM	0.5
---------------------	------	--------	-----

CATEGORY	A	B	C	D
S-ILS 6 *	239-1/2	200	[200-1/2]	
S-LOC 6 **	500-1/2 461 (500-1/2)	500-1 461 (500-1)	620-1/2 461 (500-1)	680-2 461 (500-1)
CIRCLING	560-1 561 (600-1)	600-1 561 (600-1)	620-1/2 581 (600-1/2)	680-2 641 (700-2)



ELEV 39	TDZE 39
---------	---------

PATUXENT RIVER, MARYLAND

[USN]

ILS or LOC/DME RWY 6

Orfg 02DEC21

ILS or LOC/DME RWY 6

NDB/DME RWY 6

[UN]

PATUXENT RIVER NAS (TRAPNELL FIELD) (KNHK)

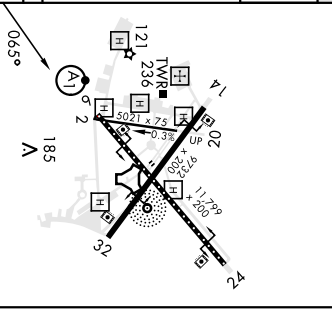
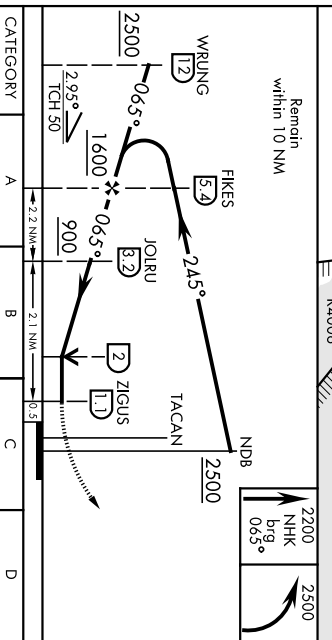
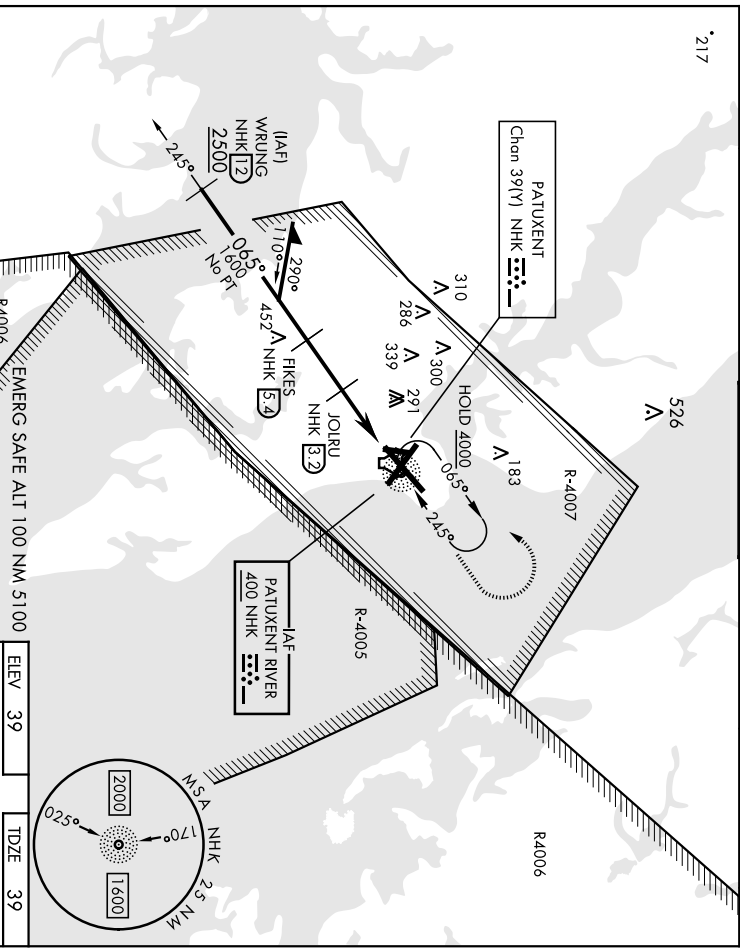
NDB NHK 400	APCH CRS 065°	Rwy Idg TDZE Appl Elev	11,799 39 39
-----------------------	-------------------------	------------------------------	-----------------------------------------

▼ * When ALS inop, increase CAT AB vis to 1 mile, CAT CD vis to 1 1/2 miles.

ALSF-1
A1

MISSED APPROACH: Climb to 2200 on 065° bearing from NHK NDB, then climbing left turn to 2500 direct NHK NDB and hold.

ATIS 322.425	APP CON 121.0 250.3	TOWER 123.7 343.65	GND CON 120.6 336.4	CINC DEL 135.2 316.125	ASR/ PAR
------------------------	-------------------------------	------------------------------	-------------------------------	----------------------------------	-------------



CATEGORY	A	B	C	D
S-6 *	560-3/4	521 (600-3/4)	560-1	521 (600-1)
CIRCLING	560-1	600-1	620-1 1/2	680-2
	521 (600-1)	561 (600-1)	581 (600-1 1/2)	641 (700-2)

PATUXENT RIVER, MARYLAND 38°17'N-76°25'W PATUXENT RIVER NAS (TRAPNELL FIELD) (KNHK)
Amdt 2 02DEC21

NDB/DME RWY 6

PATUXENT RIVER, MARYLAND

RNAV (GPS) RWY 14

APCH CRS 136°	Rwy Idg 9732
	TDZE 27
	Arprt Elev 39

(USN) PATUXENT RIVER NAS (TRAPNELL FLD) (KNHK)

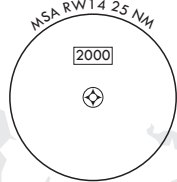
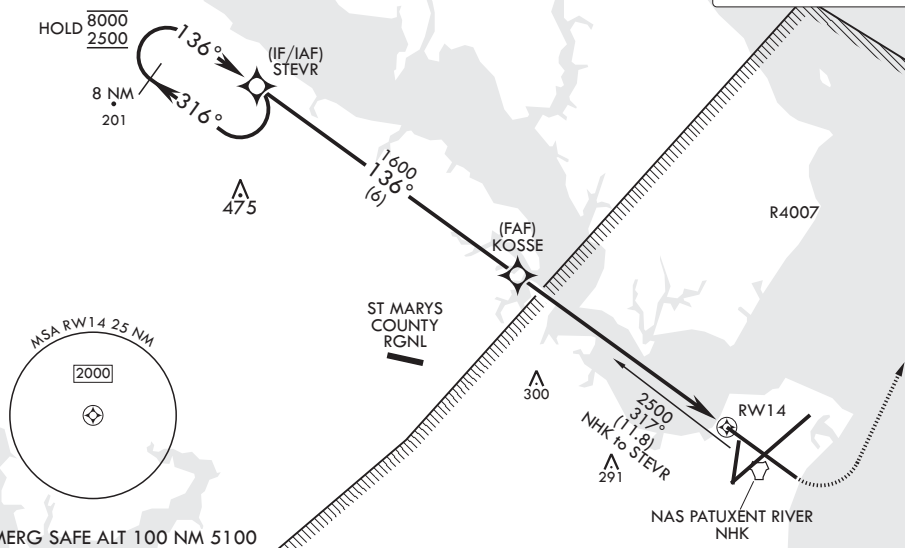
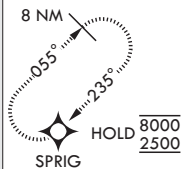
RNP APCH	MISSED APPROACH: Climb to 600, then climbing left turn to 2500 direct SPRIG and hold.
RADAR required	

ATIS 322.425	APP CON/DEP CON 121.0 250.3	TOWER 123.7 343.65	GND CON 120.6 336.4	CLNC DEL 135.2 316.125	ASR/PAR
------------------------	---------------------------------------	------------------------------	-------------------------------	----------------------------------	---------

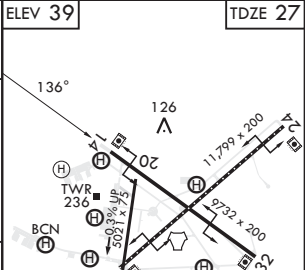
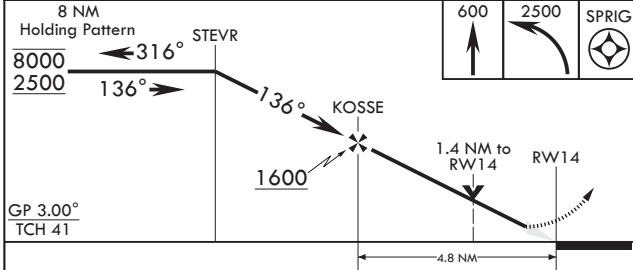
For uncompensated Baro-VNAV systems, Procedure NA, below -15°C (5°F) or above 54°C (129°F).

CAUTION: WCH group 4 aft: 16 feet is less than minimum 20 feet.

MISSED APPROACH



EMERG SAFE ALT 100 NM 5100



CATEGORY	A	B	C	D	E
LNAV/VNAV DA	367-1 340 (400-1)	378-1 351 (400-1)	386-1 359 (400-1)	397-1	370 (400-1)
LNAV MDA	500-1	473 (500-1)	500-1½	473	(500-1½)
C CIRCLING	540-1 501 (600-1)	560-1 521 (600-1)	620-1½ 581 (600-1½)	680-2 641 (700-2)	820-2¾ 781 (800-2¾)

HIRL Rwy 6-24, 14-32
TDZL/CL Rwy 6

PATUXENT RIVER, MARYLAND

38°17'N - 76°25'W PATUXENT RIVER NAS (TRAPNELL FLD) (KNHK)

Amdt 3 07SEP23

RNAV (GPS) RWY 14

NE-3, 22 FEB 2024 to 21 MAR 2024

NE-3, 22 FEB 2024 to 21 MAR 2024

PATUXENT RIVER, MARYLAND

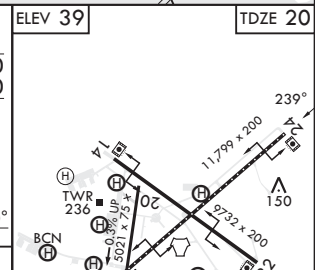
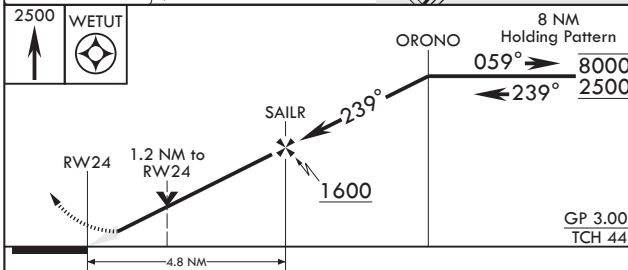
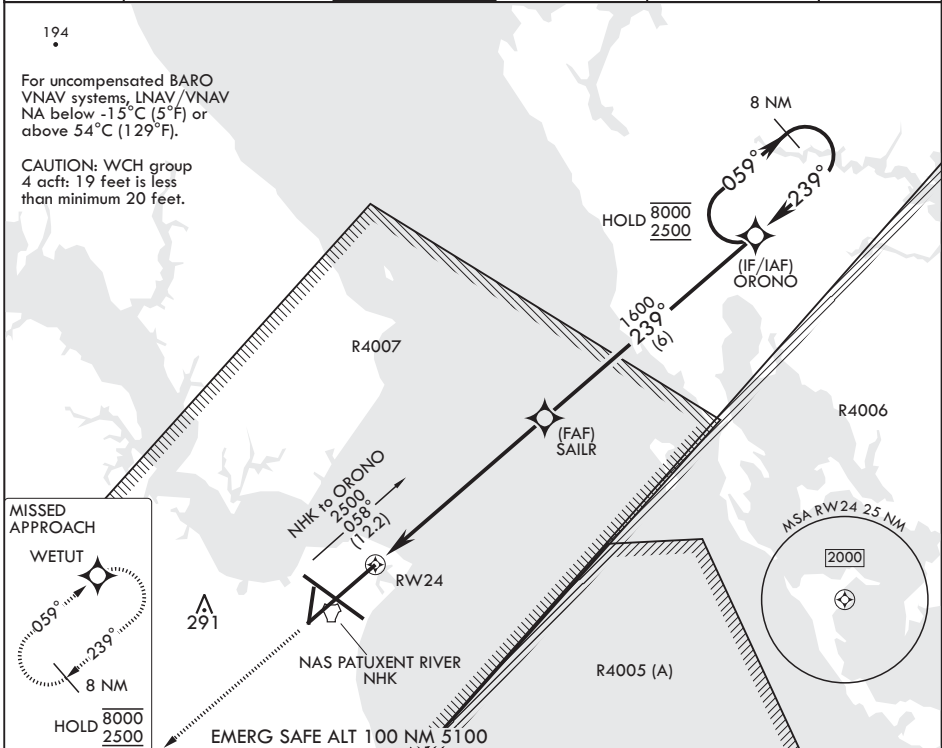
RNAV (GPS) RWY 24

APCH CRS	Rwy Idg	11,799
239°	TDZE	20
	Arprt Elev	39

- (USN) PATUXENT RIVER NAS (TRAPNELL FLD) (KNHK)

RNP APCH	MISSED APPROACH: Climb to 2500 direct WETUT and hold.
----------	-------------------------------------------------------

ATIS	APP CON/DEP CON	TOWER	GND CON	CLNC DEL	ASR/PAR
322.425	121.0 250.3	123.7 343.65	120.6 336.4	135.2 316.125	



CATEGORY	A	B	C	D	E
LNAV/VNAV DA	308-7/8 288 (300-7/8)	319-7/8 299 (300-7/8)	327-7/8 307 (300-7/8)	338-7/8	318 (300-7/8)
LNAV MDA	440-1 420 (500-1)		440-1 420 (500-1)		
C CIRCLING	540-1 501 (600-1)	560-1 521 (600-1)	620-1 1/2 581 (600-1 1/2)	680-2 641 (700-2)	820-2 3/4 781 (800-2 3/4)

HIRL Rwy 6-24, 14-32
TDZL/CL Rwy 6

PATUXENT RIVER, MARYLAND
Amdt 3 07SEP23

38°17'N - 76°25'W PATUXENT RIVER NAS (TRAPNELL FLD) (KNHK)

RNAV (GPS) RWY 24

NE-3, 22 FEB 2024 to 21 MAR 2024

NE-3, 22 FEB 2024 to 21 MAR 2024

PATUXENT RIVER, MARYLAND

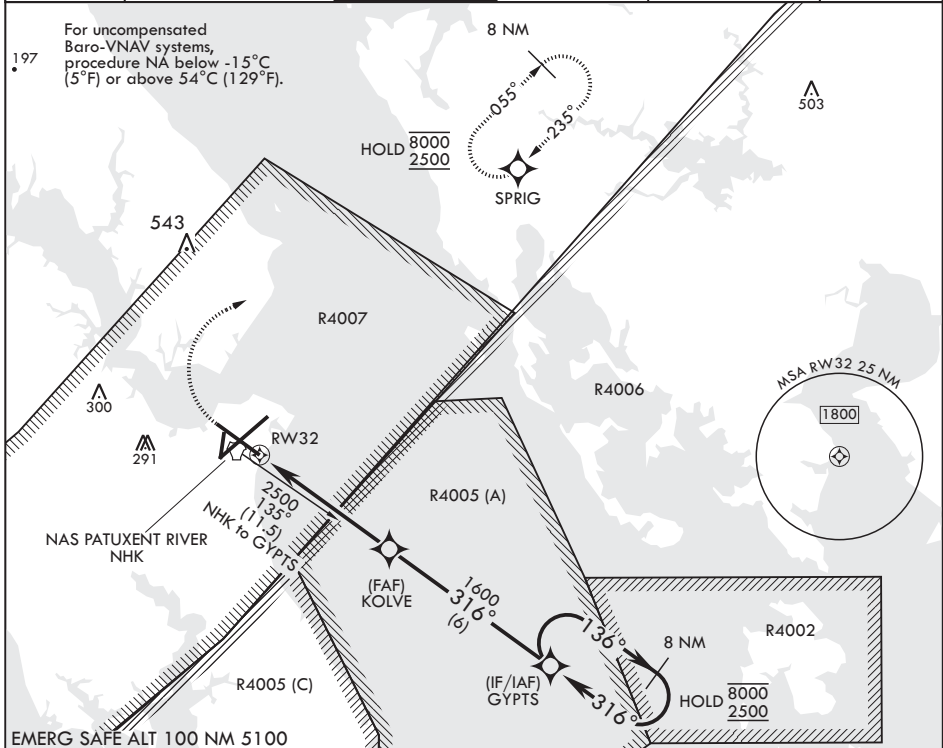
RNAV (GPS) RWY 32

APCH CRS 316°	Rwy Idg TDZE Arpt Elev	9732 18 39
------------------	------------------------------	------------------

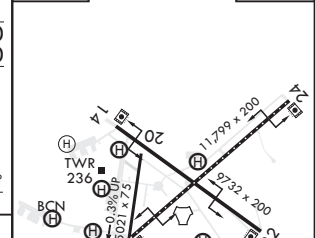
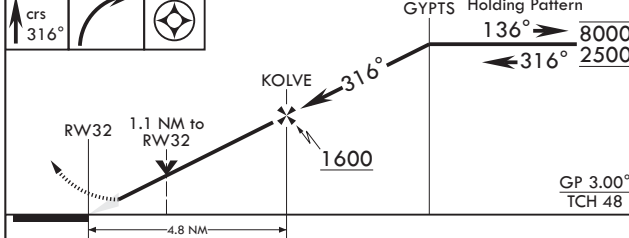
(USN) PATUXENT RIVER NAS (TRAPNELL FLD) (KNHK)

RNP APCH	MISSED APPROACH: Climb to 600, then climbing right turn to 2500 direct SPRIG and hold.
----------	----------------------------------------------------------------------------------------

ATIS 322.425	APP CON/DEP CON 121.0 250.3	TOWER 123.7 343.65	GND CON 120.6 336.4	CLNC DEL 135.2 316.125	ASR/PAR
-----------------	--------------------------------	-----------------------	------------------------	---------------------------	---------



600	2500	SPRIG	ELEV 39	TDZE 18
-----	------	-------	---------	---------



CATEGORY	A	B	C	D	E
LNAV/VNAV DA	295- ⁷ / ₈ 277 (300- ⁷ / ₈)	306- ⁷ / ₈ 288 (300- ⁷ / ₈)	314- ⁷ / ₈ 296 (300- ⁷ / ₈)	325- ⁷ / ₈	307 (300- ⁷ / ₈)
LNAV MDA	420-1	402 (400-1)	420-1 ¹ / ₂	402	(400-1 ¹ / ₂)
CIRCLING	540-1 501 (600-1)	560-1 521 (600-1)	620-1 ¹ / ₂ 581 (600-1 ¹ / ₂)	680-2 641 (700-2)	820-2 ³ / ₄ 781 (800-2 ³ / ₄)

HIRL Rlys 6-24, 14-32 TDZL/CL Rwy 6

PATUXENT RIVER, MARYLAND 38°17'N - 76°25'W PATUXENT RIVER NAS (TRAPNELL FLD) (KNHK)

Amdt 4 07SEP23

RNAV (GPS) RWY 32

NE-3, 22 FEB 2024 to 21 MAR 2024

NE-3, 22 FEB 2024 to 21 MAR 2024

PATUXENT RIVER, MARYLAND

RNAV (GPS) RWY 6

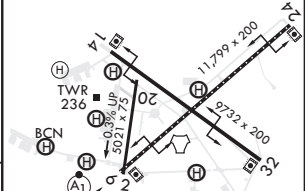
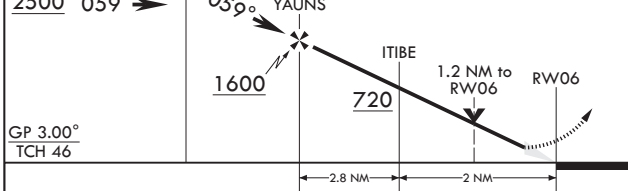
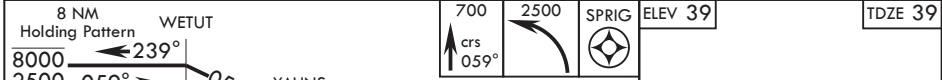
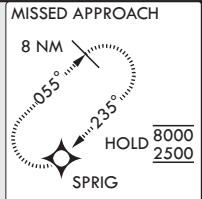
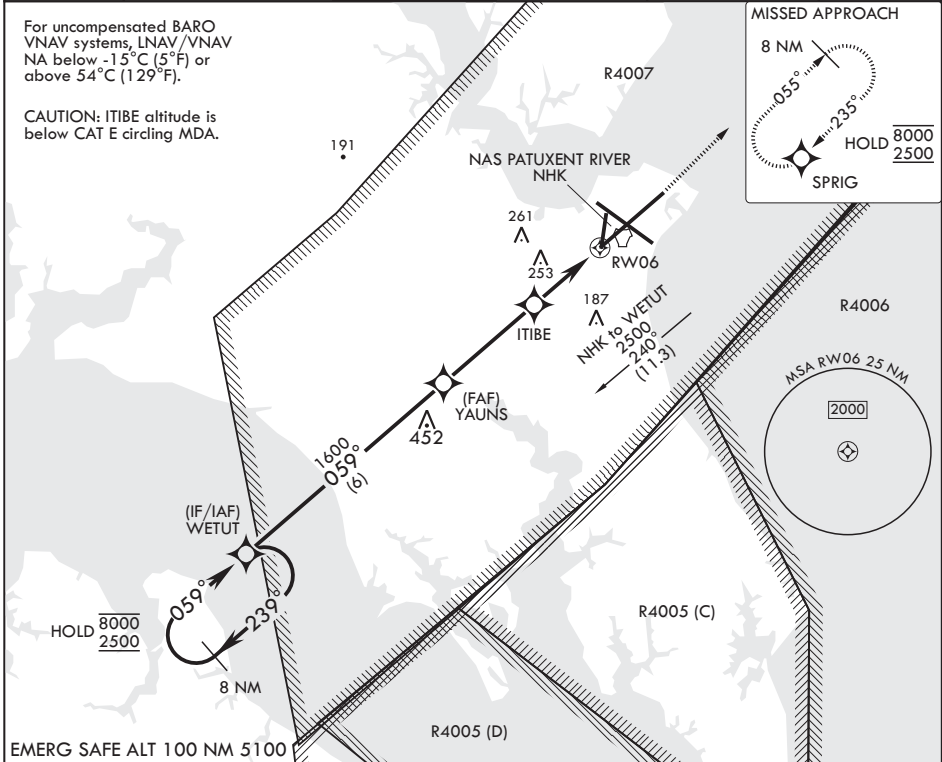
APCH CRS	Rwy Idg	11,799
059°	TDZE	39
	Arpt Elev	39

(-USN) PATUXENT RIVER NAS (TRAPNELL FLD) (KNHK)

RNP APCH
 * When ALS inop, increase vis to 1 3/8 miles.
 ** When ALS inop, increase CAT AB vis to 1 mile, CAT CD vis to 1 3/8 miles.

ALSF-1 MISSED APPROACH: Climb to 700 then climbing left turn to 2500 direct SPRIG and hold.

ATIS	APP CON/DEP CON	TOWER	GND CON	CLNC DEL	ASR/PAR
322.425	121.0 250.3	123.7 343.65	120.6 336.4	135.2 316.125	



CATEGORY	A	B	C	D	E
LNAV/VNAV DA*	480-1 ³ / ₈		441	(500-1 ³ / ₈)	
LNAV MDA**	480-1	441 (500-1)	480-1 ³ / ₈	441	(500-1 ³ / ₈)
CIRCLING	540-1 501 (600-1)	560-1 521 (600-1)	620-1 ¹ / ₂ 581 (600-1 ¹ / ₂)	680-2 641 (700-2)	820-2 ³ / ₄ 781 (800-2 ³ / ₄)

PATUXENT RIVER, MARYLAND 38°17'N - 76°25'W PATUXENT RIVER NAS (TRAPNELL FLD) (KNHK)

Amdt 3 07SEP23

RNAV (GPS) RWY 6

NE-3, 22 FEB 2024 to 21 MAR 2024

NE-3, 22 FEB 2024 to 21 MAR 2024

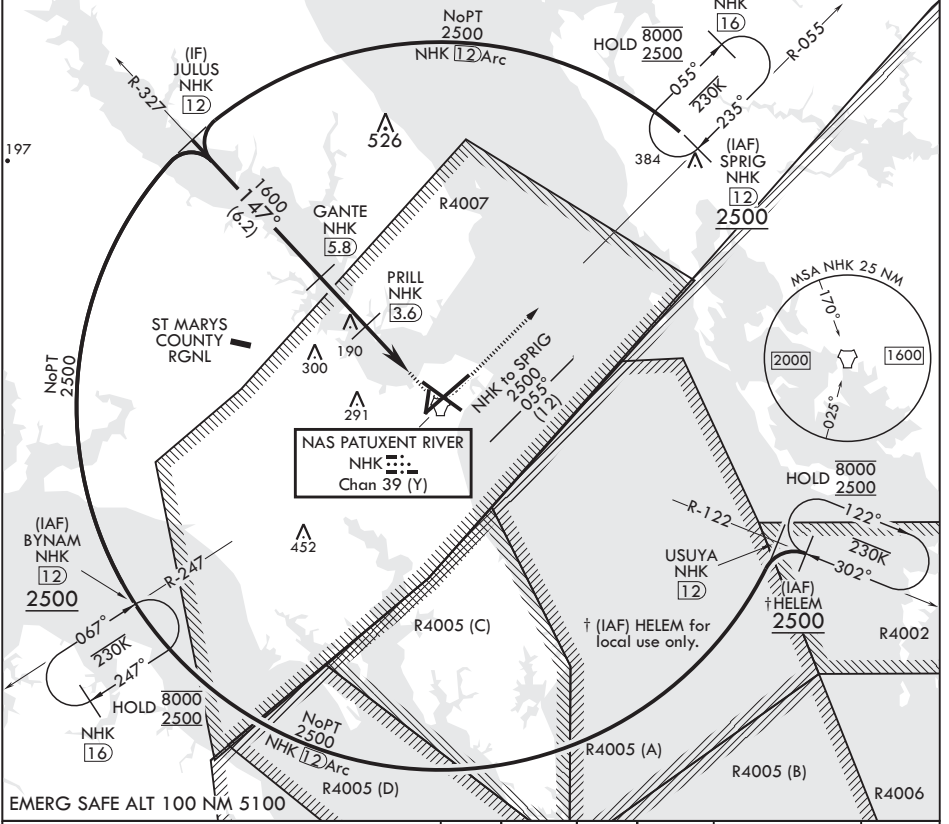
PATUXENT RIVER, MARYLAND

TACAN Z RWY 14

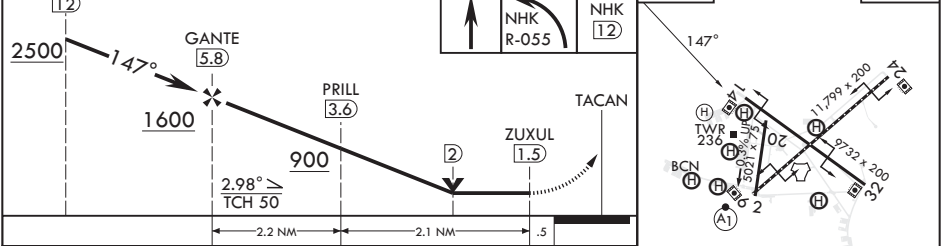
TACAN NHK Chan 39 (Y)	APCH CRS 147°	Rwy ldg TDZE 9732 Arprt Elev 27 39
-----------------------	---------------	------------------------------------

(USN) PATUXENT RIVER NAS (TRAPNELL FLD) (KNHK)
MISSED APPROACH: Climb to 500, then climbing left turn to 2500 on NHK TACAN R-055 to SPRIG and hold.

ATIS 322.425	APP CON/DEP CON 121.0 250.3	TOWER 123.7 343.65	GND CON 120.6 336.4	CLNC DEL 135.2 316.125	ASR/PAR
---------------------	------------------------------------	---------------------------	----------------------------	-------------------------------	---------



EMERG SAFE ALT 100 NM 5100



CATEGORY	A	B	C	D	ELEV 39	TDZE 27
S-14	400-1		373 (400-1)			
CIRCLING	560-1 521 (600-1)	600-1 561 (600-1)	620-1½ 581 (600-1½)	680-2 641 (700-2)	HIRL Rwsy 6-24, 14-32 TDZL/CL Rwy 6	

PATUXENT RIVER, MARYLAND 38°17'N - 76°25'W PATUXENT RIVER NAS (TRAPNELL FLD) (KNHK)

Orig 02DEC21

TACAN Z RWY 14

NE-3, 22 FEB 2024 to 21 MAR 2024

NE-3, 22 FEB 2024 to 21 MAR 2024

PATUXENT RIVER, MARYLAND

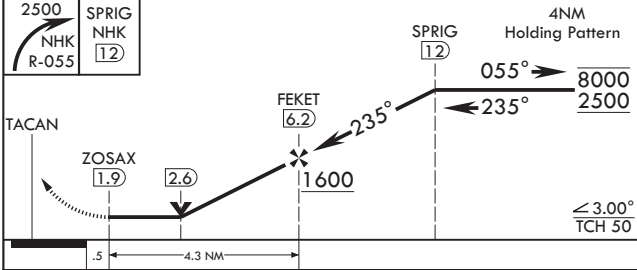
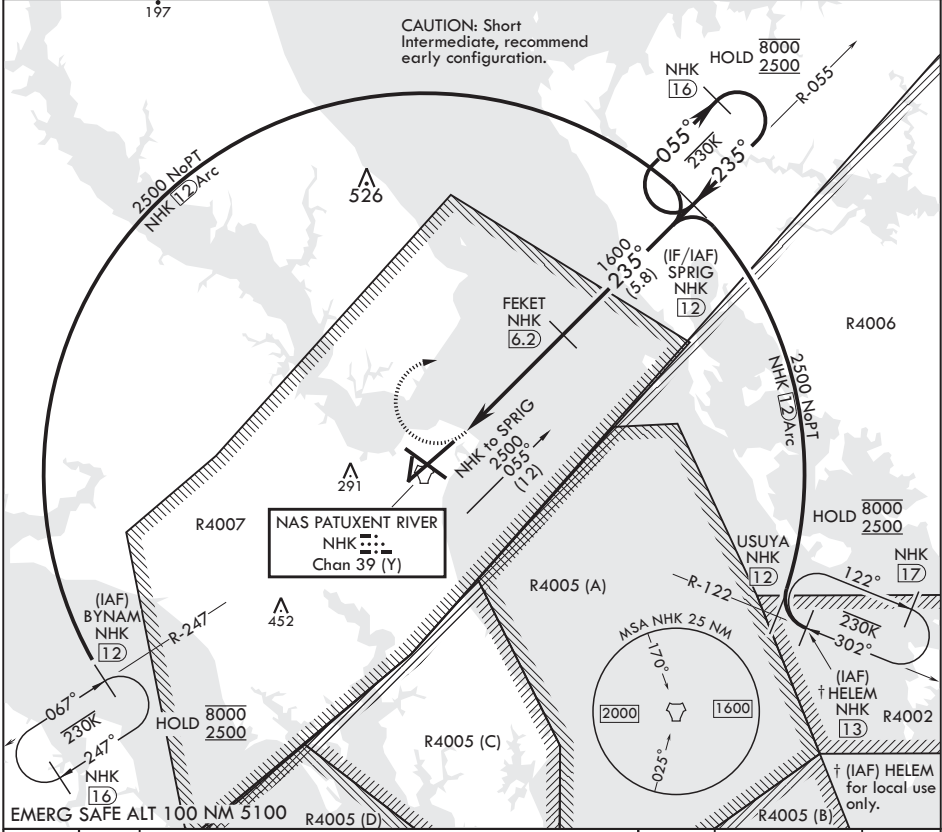
TACAN Z RWY 24

TACAN NHK Chan 39 (Y)	APCH CRS 235°	Rwy ldg TDZE Arprt Elev	11,799 20 39
--------------------------	------------------	-------------------------------	--------------------

(USN) PATUXENT RIVER NAS (TRAPNELL FLD) (KNHK)

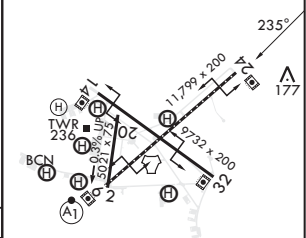
MISSED APPROACH: Climbing right turn to 2500 and intercept NHK TACAN R-055 to SPRIG and hold.

ATIS 322.425	APP CON/DEP CON 121.0 250.3	TOWER 123.7 343.65	GND CON 120.6 336.4	CLNC DEL 135.2 316.125	ASR/PAR
-----------------	--------------------------------	-----------------------	------------------------	---------------------------	---------



ELEV 39	TDZE 20
---------	---------

CATEGORY	A	B	C	D
S-24	440-1	420 (500-1)	440-1½	420 (500-1½)
CIRCLING	560-1 521 (600-1)	600-1 561 (600-1)	620-1½ 581 (600-1½)	680-2 641 (700-2)



PATUXENT RIVER, MARYLAND 38°17'N - 76°25'W PATUXENT RIVER NAS (TRAPNELL FLD) (KNHK)

Orig 02DEC21

TACAN Z RWY 24

NE-3, 22 FEB 2024 to 21 MAR 2024

NE-3, 22 FEB 2024 to 21 MAR 2024

PATUXENT RIVER, MARYLAND

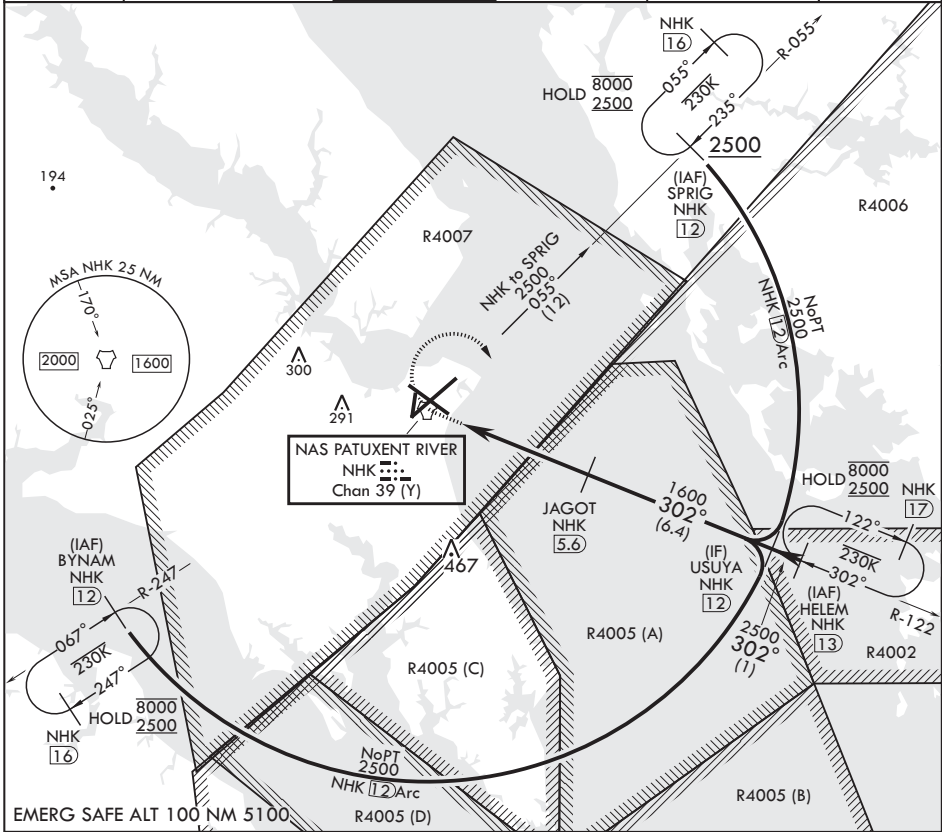
TACAN Z RWY 32

TACAN NHK Chan 39 (Y)	APCH CRS 302°	Rwy ldg TDZE 18	9732
		Arprt Elev 39	

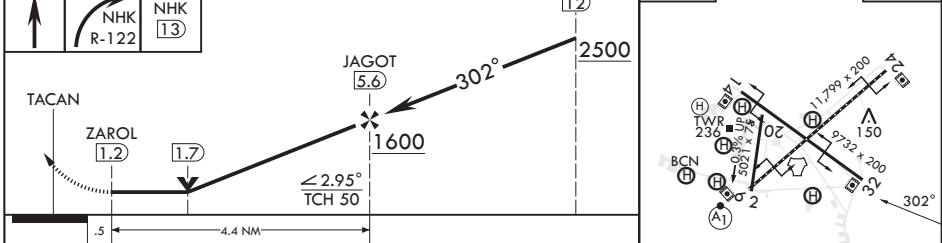
(USN) PATUXENT RIVER NAS (TRAPNELL FLD) (KNHK)

MISSED APPROACH: Climb to 500, then climbing right turn to 2500 on NHK TACAN R-122 to HELEM and hold.

ATIS 322.425	APP CON/DEP CON 121.0 250.3	TOWER 123.7 343.65	GND CON 120.6 336.4	CLNC DEL 135.2 316.125	ASR/PAR
--------------	-----------------------------	--------------------	---------------------	------------------------	---------



500	2500	HELEM NHK 13	USUYA 12	ELEV 39	TDZE 18
-----	------	--------------	----------	---------	---------



CATEGORY	A	B	C	D
S-32	400-1 382 (400-1)	400-1 382 (400-1)	400-1 382 (400-1)	400-1 382 (400-1)
CIRCLING	560-1 521 (600-1)	600-1 561 (600-1)	620-1 581 (600-1/2)	680-2 641 (700-2)

HIRL Rwy 6-24, 14-32
TDZL/CL Rwy 6

PATUXENT RIVER, MARYLAND

38°17'N - 76°25'W PATUXENT RIVER NAS (TRAPNELL FLD) (KNHK)

Orig 02DEC21

TACAN Z RWY 32

NE-3, 22 FEB 2024 to 21 MAR 2024

NE-3, 22 FEB 2024 to 21 MAR 2024

PATUXENT RIVER, MARYLAND

TACAN Z RWY 6

TACAN NHK Chan 39 (Y)	APCH CRS 067°	Rwy ldg TDZE 11,799 39	Arprt Elev 39
-----------------------	---------------	------------------------	---------------

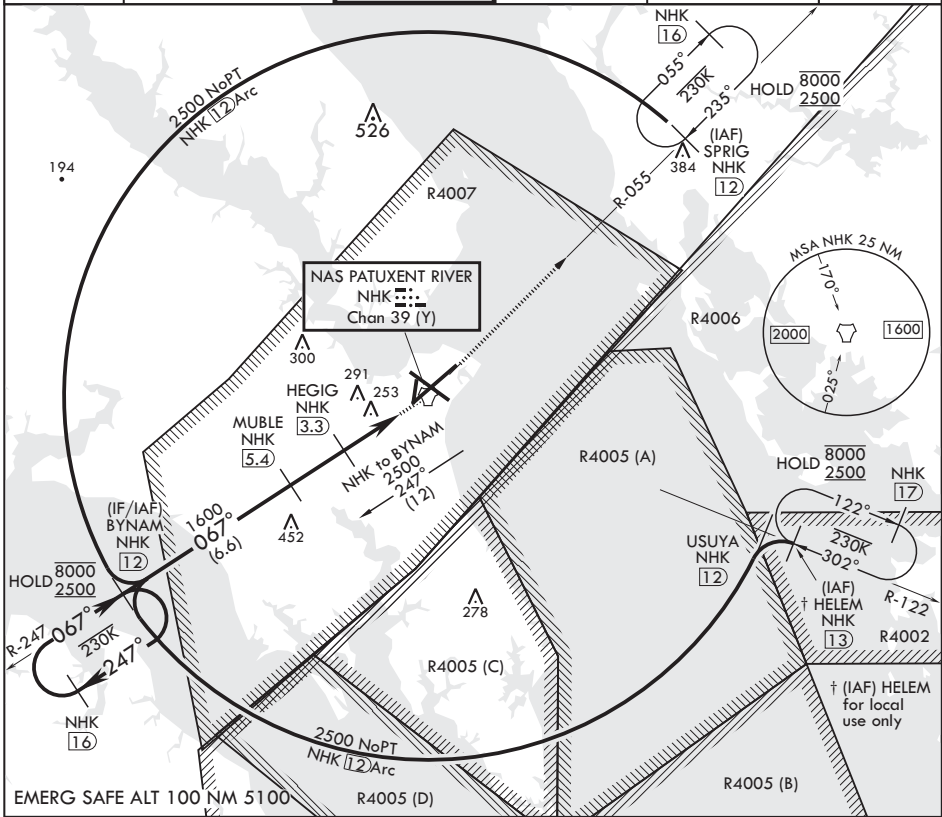
(USN)

PATUXENT RIVER NAS (TRAPNELL FLD) (KNHK)

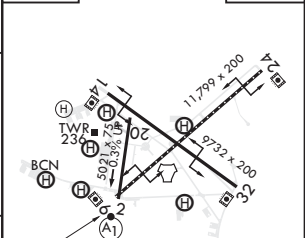
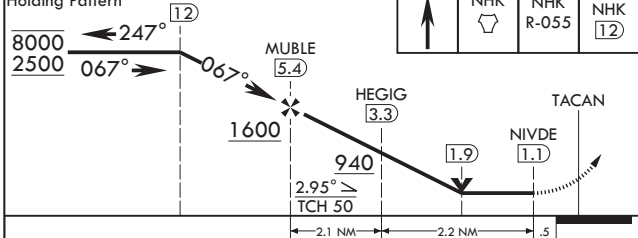
▼ * When ALS inop, increase CAT AB vis to 1 mile, CAT CD vis to 1 3/8 miles.

ALS-1 MISSED APPROACH: Climb to 2500 direct NHK TACAN and NHK R-055 to SPRIG and hold.

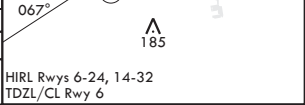
ATIS 322.425	APP CON/DEP CON 121.0 250.3	TOWER 123.7 343.65	GND CON 120.6 336.4	CLNC DEL 135.2 316.125	ASR/PAR
--------------	-----------------------------	--------------------	---------------------	------------------------	---------



4NM Holding Pattern	BYNAM NHK 12	2500 NHK	NHK R-055	SPRIG NHK 12	ELEV 39	TDZE 39
---------------------	--------------	----------	-----------	--------------	---------	---------



CATEGORY	A		B		C		D	
S-6*	520-1/2	481	(500-1/2)	520-1	481	(500-1)		
CIRCLING	560-1	521 (600-1)	600-1	561 (600-1)	620-1/2	581 (600-1/2)	680-2	641 (700-2)



PATUXENT RIVER, MARYLAND

38°17'N - 76°25'W PATUXENT RIVER NAS (TRAPNELL FLD) (KNHK)

Orig 02DEC21

TACAN Z RWY 6

NE-3, 22 FEB 2024 to 21 MAR 2024

NE-3, 22 FEB 2024 to 21 MAR 2024