

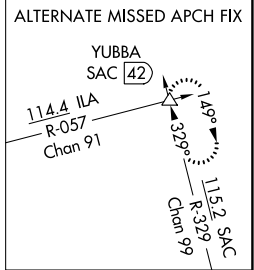
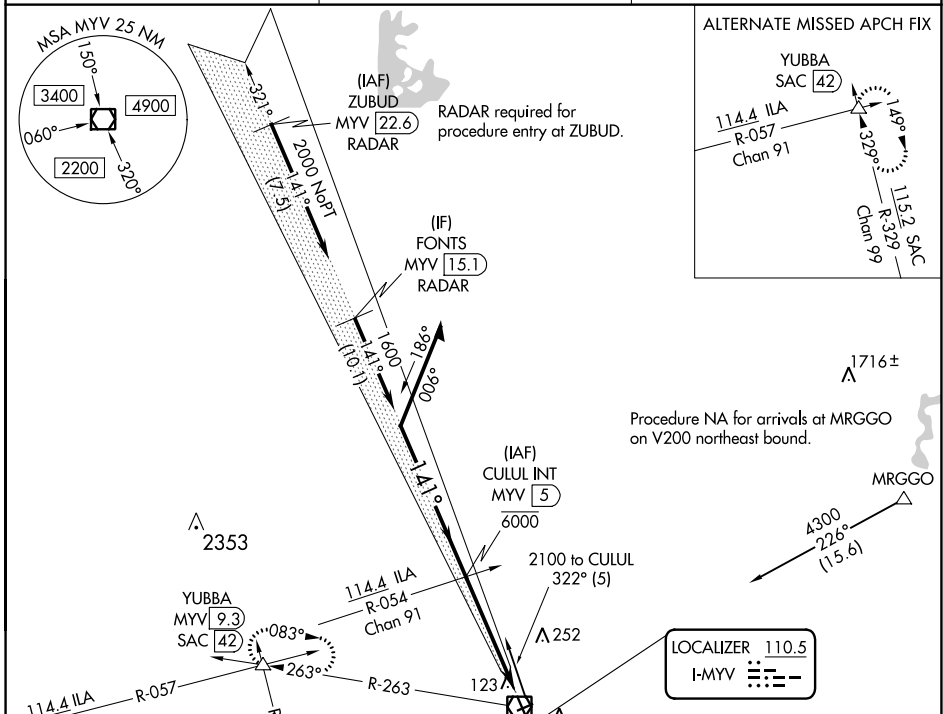
LOC I-MYV 110.5	APP CRS 141°	Rwy Idg 6007 TDZE 64 Apt Elev 64
---------------------------	------------------------	---

ILS or LOC RWY 14

YUBA COUNTY (MYV)

<p>NA Circling Rwy 5, 23 NA at night. Autopilot coupled approach NA below 695.</p>	<p>MALSR</p>	<p>MISSED APPROACH: Climb to 1000 then climbing right turn to 4000 on MYV VOR/DME R-263 to YUBBA INT/ MYV 9.3 DME and hold, continue climb in hold to 4000.</p>
--	--------------	---

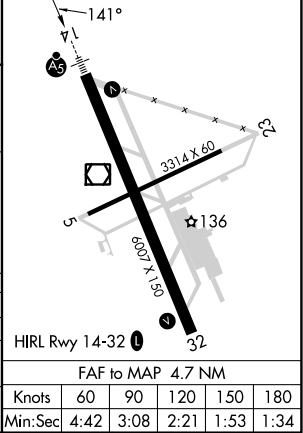
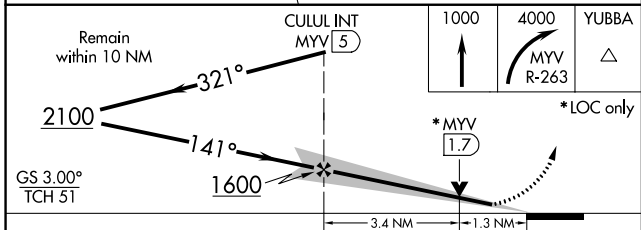
ASOS 118.475	NORCAL APP CON 125.4 259.1	UNICOM 123.05 (CTAF)
------------------------	--------------------------------------	--------------------------------



Procedure NA for arrivals at MRGGO on V200 northeast bound.

LOCALIZER 110.5
I-MYV

ELEV 64	TDZE 64
----------------	----------------



CATEGORY	A	B	C	D
S-ILS 14	264-1/2 200 (200-1/2)			
S-LOC 14	520-1/2	456 (500-1/2)	520-7/8	456 (500-7/8)
C CIRCLING	540-1	476 (500-1)	560-1 1/2 496 (500-1 1/2)	620-2 556 (600-2)

FAF to MAP 4.7 NM					
Knots	60	90	120	150	180
Min:Sec	4:42	3:08	2:21	1:53	1:34

SW-2, 22 FEB 2024 to 21 MAR 2024


SW-2, 22 FEB 2024 to 21 MAR 2024

WAAS CH 42814 W14A	APP CRS 141°	Rwy Idg TDZE Apt Elev	6007 64 64
--	------------------------	-----------------------------	---------------------------------------


RNAV (GPS) RWY 14

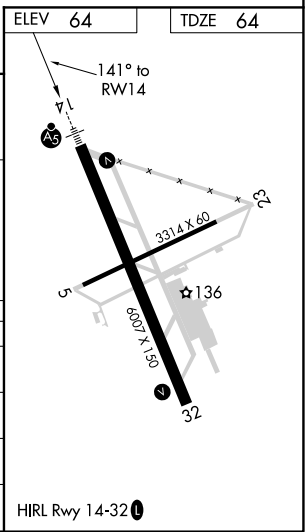
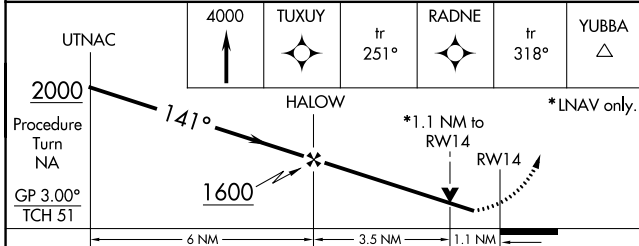
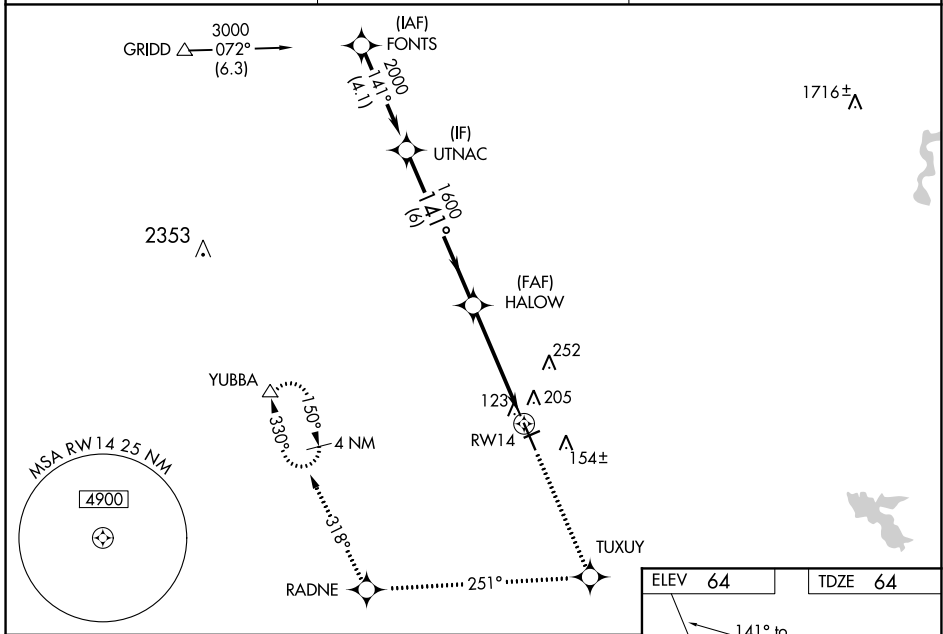
YUBA COUNTY (MYV)

⚠ For uncompensated Baro-VNAV systems, LNAV/VNAV NA below -1.5°C (5°F) or above 54°C (130°F). DME/DME RNP-0.3 NA. Helicopter visibility reduction below 3/4 SM NA. Baro-VNAV and VDP NA when using Lincoln altimeter setting. When local altimeter setting not received, use Lincoln altimeter setting and increase LPV DA to 308 feet, LNAV/VNAV DA to 514 feet and all MDA 60 feet; increase LNAV/VNAV all Cats visibility 1/8 mile, LNAV Cats C/D visibility 1/8 mile. Inop table does not apply to LPV all Cats. For inop MALSRL increase LNAV Cats A/B visibility 1/4 mile. Night landing: Rwy 5, 23 NA.

MALSRL


MISSED APPROACH:
 Climb to 4000 direct TUXUY and via track 251° to RADNE and via track 318° to YUBBA and hold.

ASOS 118.475	NORCAL APP CON 125.4 259.1	UNICOM 123.05 (CTAF) 
------------------------	--------------------------------------	--



CATEGORY	A	B	C	D
LPV DA		264-3/4	200 (200-3/4)	
LNAV/VNAV DA		470-7/8	406 (500-7/8)	
LNAV MDA		500-3/4	436 (500-3/4)	
CIRCLING	540-1	476 (500-1)	540-1 1/2 476 (500-1 1/2)	620-2 556 (600-2)

SW-2, 22 FEB 2024 to 21 MAR 2024

SW-2, 22 FEB 2024 to 21 MAR 2024

WAAS CH 87014 W32A	APP CRS 321°	Rwy Idg 6007 TDZE 63 Apt Elev 64
--	------------------------	---

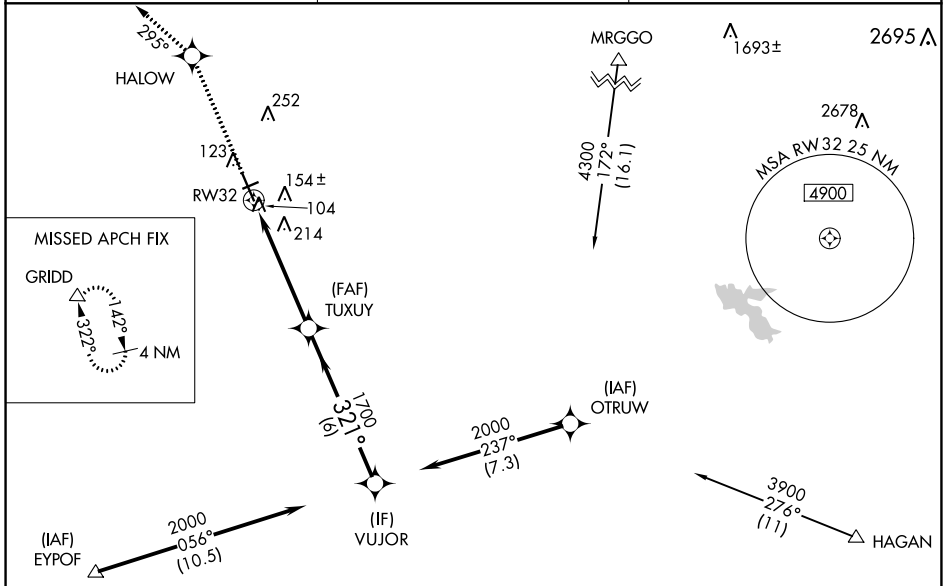
RNAV (GPS) RWY 32

YUBA COUNTY (MYV)

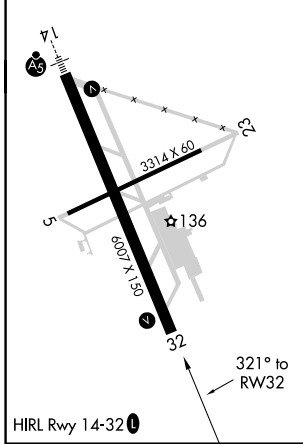
▼ For uncompensated Baro-VNAV systems, LNAV/VNAV NA below -1.5°C (5°F) or above 54°C (130°F). DME/DME RNP-0.3 NA. When local altimeter setting not received, use Lincoln altimeter setting and increase LPV DA to 357 feet, LNAV/VNAV DA to 418 feet and all MDA 60 feet; increase LPV and LNAV/VNAV all Cats visibility 1/8 mile, LNAV Cats C/D visibility 1/4 mile. Night landing: Rwy 5, 23 NA. Baro-VNAV and VDP NA when using Lincoln altimeter setting.

▲ MISSED APPROACH: Climb to 4000 direct HALOW and via track 295° to GRIDD and hold.

ASOS 118.475	NORCAL APP CON 125.4 259.1	UNICOM 123.05 (CTAF) 0
------------------------	--------------------------------------	----------------------------------



ELEV 64	TDZE 63
----------------	----------------



4000	HALOW	tr 295°	GRIDD	*LNAV only	VUJOR	Procedure Turn NA
↑	✧		△		2000	
*1.2 NM to RW32		TUXUY		321°		
1.2 NM		3.8 NM		6 NM		
CATEGORY	A	B	C	D		
LPV DA	313-7/8		250 (300-7/8)			
LNAV/VNAV DA	374-1 1/8		311 (400-1 1/8)			
LNAV MDA	480-1 417 (500-1)		480-1 1/8 417 (500-1 1/8)			
CIRCLING	540-1 476 (500-1)		540-1 1/2 476 (500-1 1/2)		620-2 556 (600-2)	

SW-2, 22 FEB 2024 to 21 MAR 2024

SW-2, 22 FEB 2024 to 21 MAR 2024