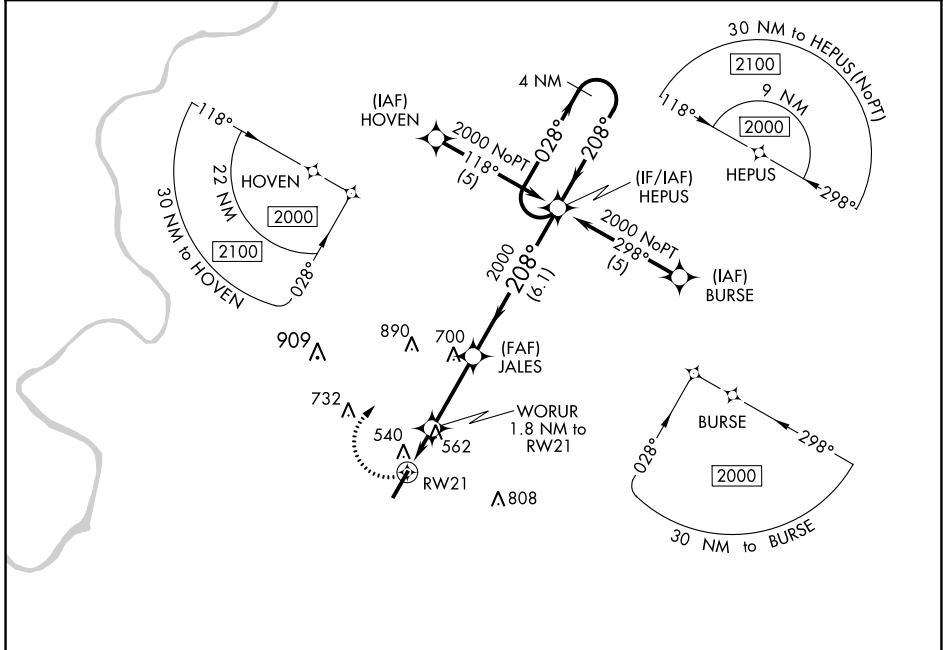


APP CRS	Rwy Idg	<b>6028</b>
<b>208°</b>	TDZE	<b>419</b>
	Apt Elev	<b>419</b>

**RNAV (GPS) RWY 21**  
MONROE COUNTY AEROPLEX (MVC)

RNP APCH.	MISSED APPROACH: Climbing right turn to 2000 direct HEPUS and hold.
▼ Obtain local altimeter setting on CTAF; when not received, use Evergreen Rgnl/Middleton Fld altimeter setting. Procedure NA at night. Rwy 21 helicopter visibility reduction below 1 SM NA.	

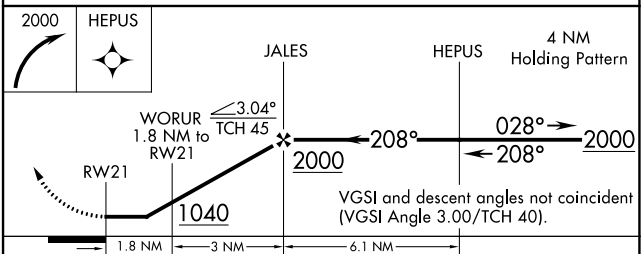
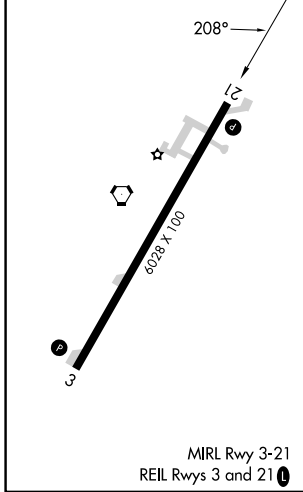
ATLANTA CENTER <b>118.55 267.9</b>	UNICOM <b>123.0 (CTAF)</b>
---------------------------------------	-------------------------------



SE-4, 22 FEB 2024 to 21 MAR 2024

SE-4, 22 FEB 2024 to 21 MAR 2024

ELEV 419	TDZE 419
----------	----------



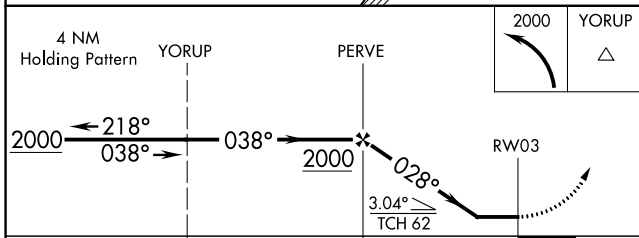
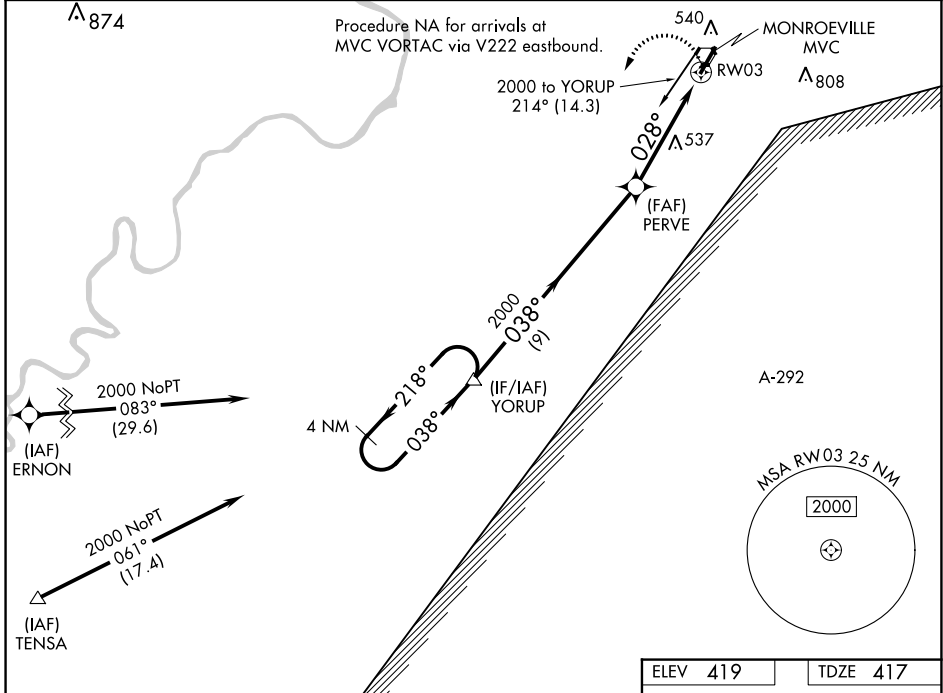
CATEGORY	A	B	C	D
LNAV/MDA	880-1	461 (500-1)	880-1¼ 461 (500-1¼)	880-1½ 461 (500-1½)
CIRCLING	880-1 461 (500-1)	920-1 501 (600-1)	920-1½ 501 (600-1½)	1120-2¼ 701 (800-2¼)
EVERGREEN RGNL/MIDDLETON FLD ALTIMETER SETTING MINIMUMS				
LNAV/MDA	940-1	521 (600-1)	940-1½ 521 (600-1½)	940-1¾ 521 (600-1¾)
CIRCLING	940-1 521 (600-1)	980-1 561 (600-1)	980-1½ 561 (600-1½)	1180-2½ 761 (800-2½)

APP CRS	Rwy Idg	<b>6028</b>
<b>028°</b>	TDZE	<b>417</b>
	Apt Elev	<b>419</b>

# RNAV (GPS) RWY 3

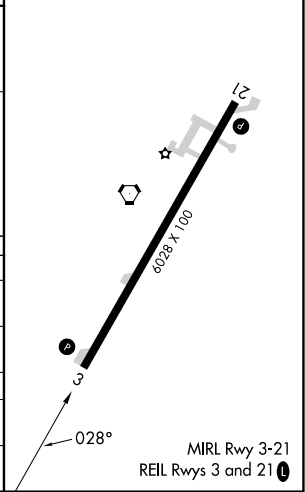
MONROE COUNTY AEROPLEX (MVC)

RNP APCH.		MISSED APPROACH: Climbing left turn to 2000 direct YORUP and hold.
▼	Obtain local altimeter setting on CTAF; when not received, use Evergreen Rgnl/Middleton Fld altimeter setting. Procedure NA at night. Rwy 3 helicopter visibility reduction below 1 SM NA.	
ATLANTA CENTER <b>118.55 267.9</b>		UNICOM <b>123.0 (CTAF)</b>



ELEV 419	TDZE 417
----------	----------

CATEGORY	A	B	C	D
LNVA MDA	940-1 523 (600-1)		940-1½ 523 (600-1½)	
<b>C</b> CIRCLING	940-1 521 (600-1)		940-1½ 521 (600-1½)	1120 2¼ 701(800-2¼)
EVERGREEN RGNL/MIDDLETON FLD ALTIMETER SETTING MINIMUMS				
LNVA MDA	1000-1 583 (600-1)		1000-1¾ 583 (600-1¾)	
<b>C</b> CIRCLING	1000-1 581 (600-1)		1000-1¾ 581 (600-1¾)	1180-2½ 761(800-2½)



SE-4, 22 FEB 2024 to 21 MAR 2024

SE-4, 22 FEB 2024 to 21 MAR 2024