

MADISON, WISCONSIN

HI-TACAN RWY 18

22307

VORTAC MSN 108.6 Chan 23	APCH CRS 173°	Rwy/Idg TDZE Appt Elev 864 887
--------------------------------	------------------	--

AI-245 (USAFI)

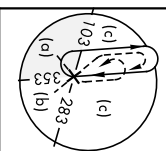
DANE COUNTY RGNL/TRUAX FLD. (KMSN)

RADAR required

MAISR
A5

MISSED APPROACH: Climbing left turn to 4000 on MSN VORTAC R-090 to DRAHN 1.5 DME and hold.

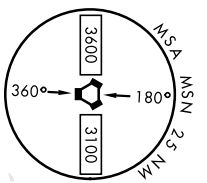
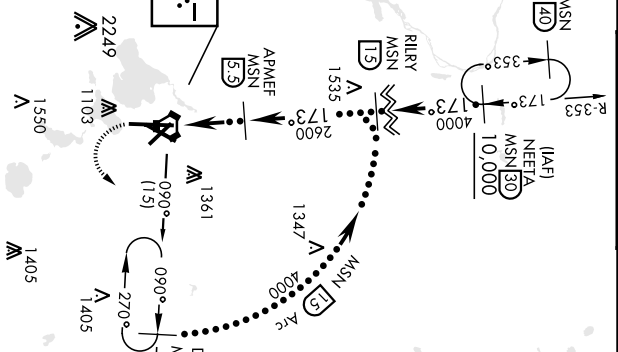
ATIS 124.65 278.3	MADISON APP CON 120.1 350.3 (E) 135.45 343.7 (W)	MADISON TOWER * 119.3 (CTAF) 1 257.8	GND CON 121.9 348.6	CINC DEL 121.625	UNICOM 122.95
----------------------	--	--	------------------------	---------------------	------------------



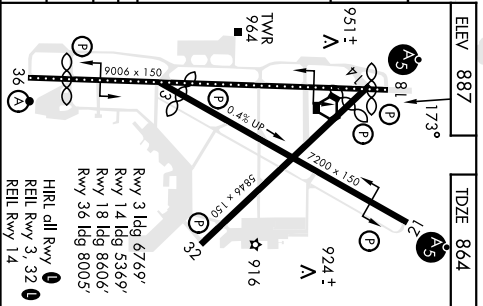
EC-3, 22 FEB 2024 to 21 MAR 2024

EC-3, 22 FEB 2024 to 21 MAR 2024

EMERG SAFE ALTI 100 NM 3600



TCH 57 3,000'	5.3 NM		
CATEGORY	C	D	E
S-18	1360/55	496	(500-1)
CIRCLING	1460-1½ 573 (600-1½)	1700-2¾ 813 (900-2¾)	1700-3 813 (900-3)



MADISON, WISCONSIN 43°08'N-89°20'W DANE COUNTY RGNL/TRUAX FLD. (KMSN) Amdt 1B 28FEB19

HI-TACAN RWY 18

VORTAC MSN	APCH CRS	Rwy Idg	8005
108.6	001°	TDZE	862
Chan 23		Arpt Elev	887

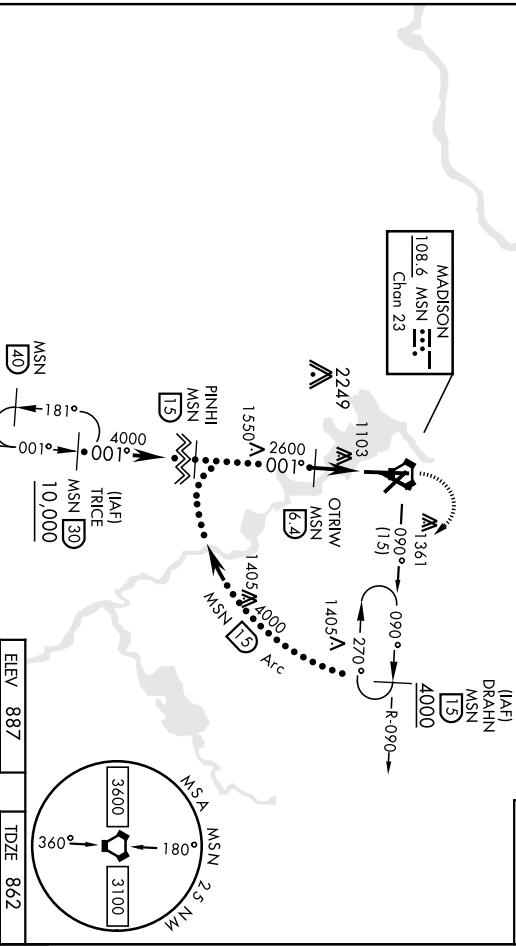
AI-245 [USAF]

DANE COUNTY RGNL/TRUAX FLD. (KMSN)

RADAR required.	ALSIF-2	MADISON APP CON	MADISON TOWER *	GND CON	CINC DEL	UNICOM
-----------------	---------	-----------------	-----------------	---------	----------	--------

MISSED APPROACH: Climbing right turn to 4000 on MSN VORTAC R-090 to DRAHN 1.5 DME and hold.

ATIS	MADISON APP CON	MADISON TOWER *	GND CON	CINC DEL	UNICOM
124.65 278.3	120.1 350.3 EAST	119.3 (CTAF) 257.8	121.9 348.6	121.625	122.95
	135.45 343.7 WEST				



EMERG SAFE ALT 100 NM 3600		ELEV	887	TDZE	862
4000	DRAHN MSN				
MSN	MSN				
R-090	13				
VORTAC	23				
1.1	OTRW				
	6.2				
	2600				
	4000				
	PINHI				
	13				
	3.00°				
	TCH 59				
CATEGORY	C	D	E		
S-36	1320/40	1320/50	458	(500-1)	
	458	(500-3/4)			
DIRCLING	1460-1½	1700-2¾	1700-3	1700-3	
	573	(600-1½)	813	(900-2¾)	813
			813	(900-3)	

MADISON, WISCONSIN 43°08'N-89°20'W DANE COUNTY RGNL/TRUAX FLD. (KMSN)
 Amdt 1A, 28FEB19
HI-TACAN RWY 36

LOC/DME I-DSZ 110.1 Chan 38	APP CRS 185°	Rwy Idg 8606 TDZE 864 Apt Elev 887
---	------------------------	--

ILS RWY 18 (SA CAT I & II)
DANE COUNTY RGNL/TRUAX FLD (MSN)

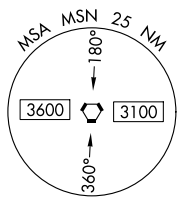
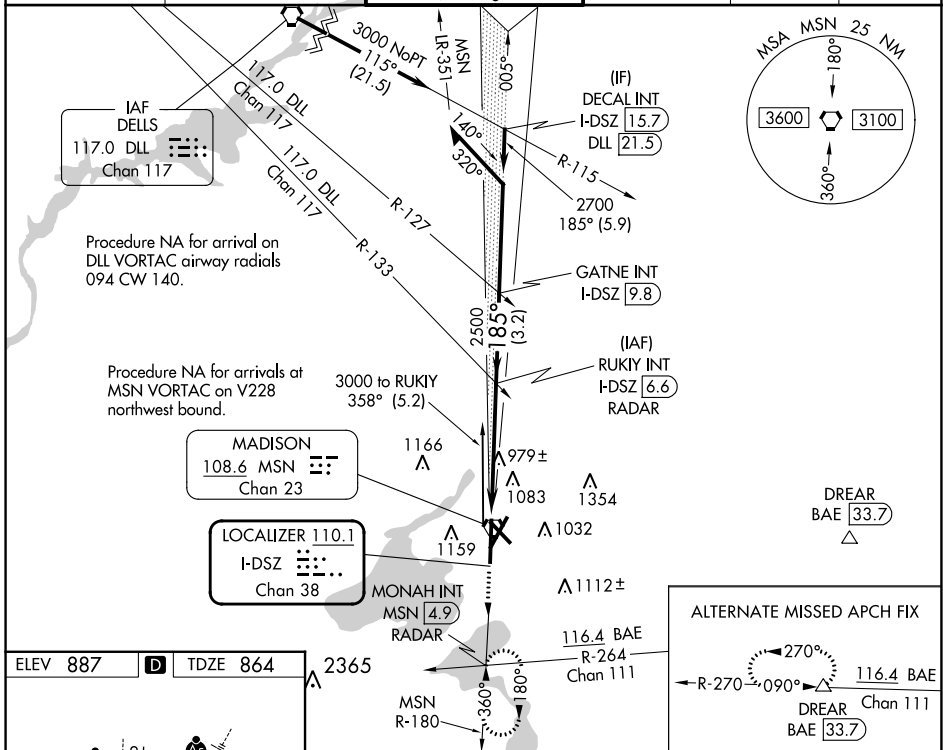
DME required.

Procedure NA when tower closed.
SA CAT I: Requires specific OPSPEC, MSPEC, or LOA approval and use of HUD to DH.
SA CAT II: Reduced lighting: Requires specific OPSPEC, MSPEC, or LOA approval and use of autoland or HUD to touchdown.

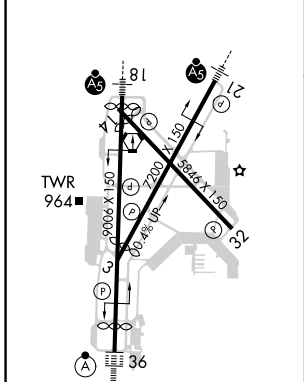


MISSED APPROACH: Climb to 2700 on MSN VORTAC R-180 to MONAH INT/MSN VORTAC 4.9 DME/RADAR and hold.

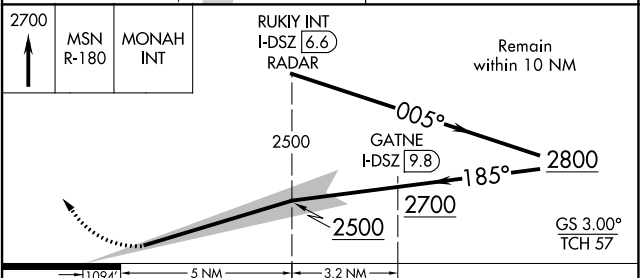
ATIS 124.65 278.3	MADISON APP CON ★ 135.45 343.7	MADISON TOWER ★ 119.3 (CTAF) 0 257.8	GND CON 121.9 348.6	CINC DEL 121.625	UNICOM 122.95
-----------------------------	--	--	-------------------------------	----------------------------	-------------------------



ELEV 887	D	TDZE 864
----------	----------	----------



HIRL all Rwy 18
REIL Rwy 3, 14 and 32



CATEGORY	A	B	C	D
S-ILS 18	SA CAT I	RA 153/14	150 DA 1014	
S-ILS 18	SA CAT II	RA 103/12	100 DA 964	

SA CATEGORY I & II ILS SPECIAL AIRCREW & AIRCRAFT CERTIFICATION REQUIRED

EC-3, 22 FEB 2024 to 21 MAR 2024

EC-3, 22 FEB 2024 to 21 MAR 2024

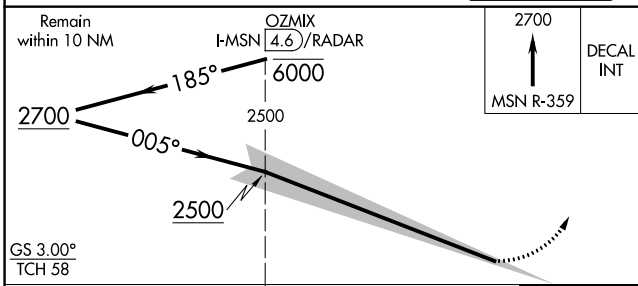
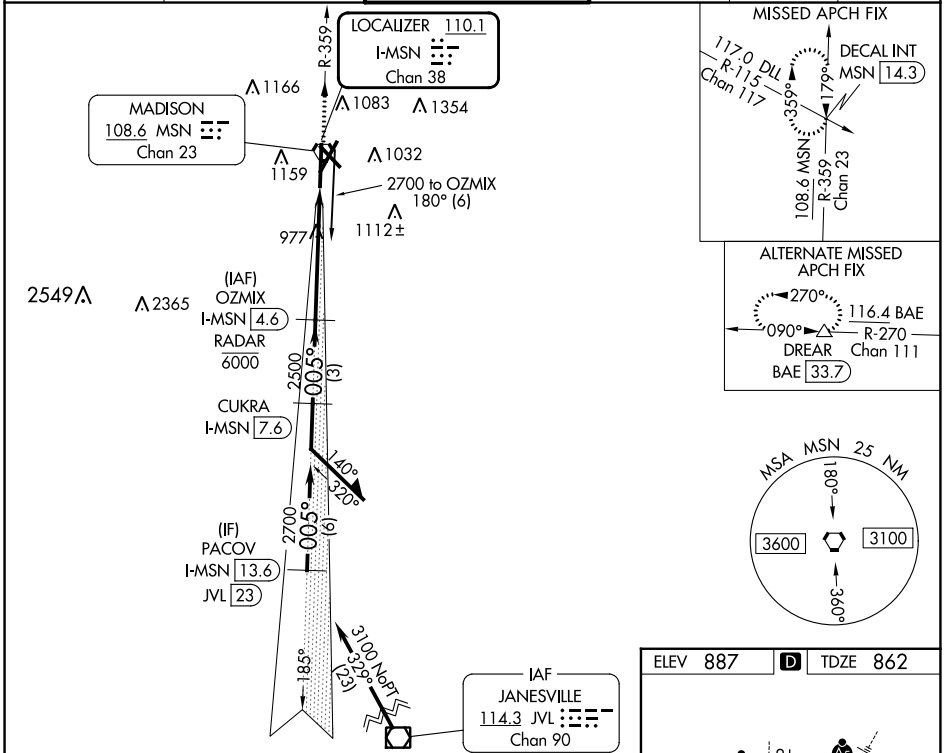
LOC/DME I-MSN 110.1 Chan 38	APP CRS 005°	Rwy Idg TDZE 862 Apt Elev 887	8005
---	------------------------	---	-------------

ILS RWY 36 (SA CAT I)

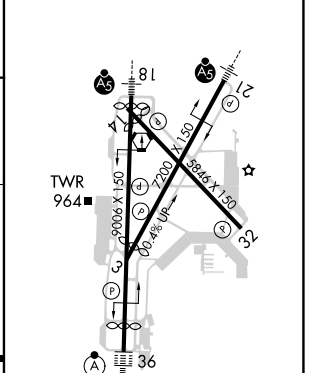
DANE COUNTY RGNL/TRUAX FLD (MSN)

⚠ DME or RADAR required. Requires specific OPSPEC, MSPEC, or LOA approval and use of HUD to DH. S-ILS R36 NA when control tower closed.	ALSF-2 	MISSED APPROACH: Climb to 2700 on MSN VORTAC R-359 to DECAL INT/MSN 14.3 DME and hold.
--	------------	--

ATIS 124.65 278.3	MADISON APP CON * 135.45 343.7	MADISON TOWER * 119.3 (CTAF) 0 257.8	GND CON 121.9 348.6	CLNC DEL 121.625	UNICOM 122.95
-----------------------------	--	--	-------------------------------	----------------------------	-------------------------



ELEV 887	D TDZE 862
----------	-------------------



CATEGORY	A	B	C	D
S-ILS 36	RA 159/14 150 DA 1012			
SA CATEGORY I ILS - SPECIAL AIRCREW & AIRCRAFT CERTIFICATION REQUIRED				

HIRL all Rwy's **0**
REIL Rwy's 3, 14 and 32 **0**

EC-3, 22 FEB 2024 to 21 MAR 2024

EC-3, 22 FEB 2024 to 21 MAR 2024

LOC/DME I-DSZ 110.1	APP CRS 185°	Rwy Idg 8606
Chan 38	TDZE 864	Apt Elev 887

ILS or LOC RWY 18

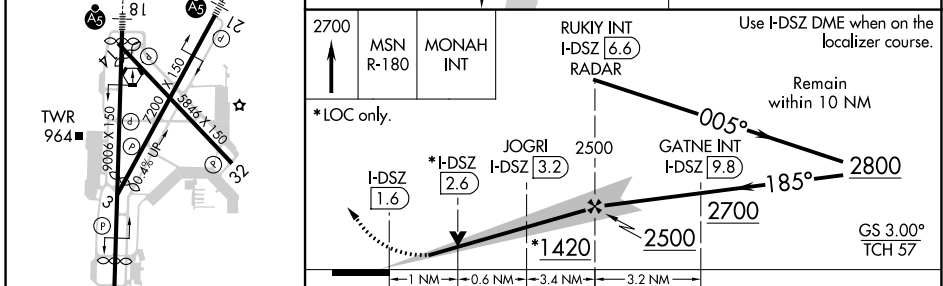
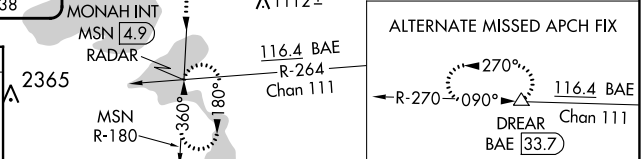
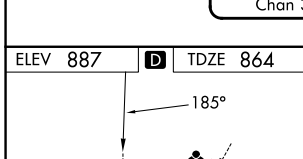
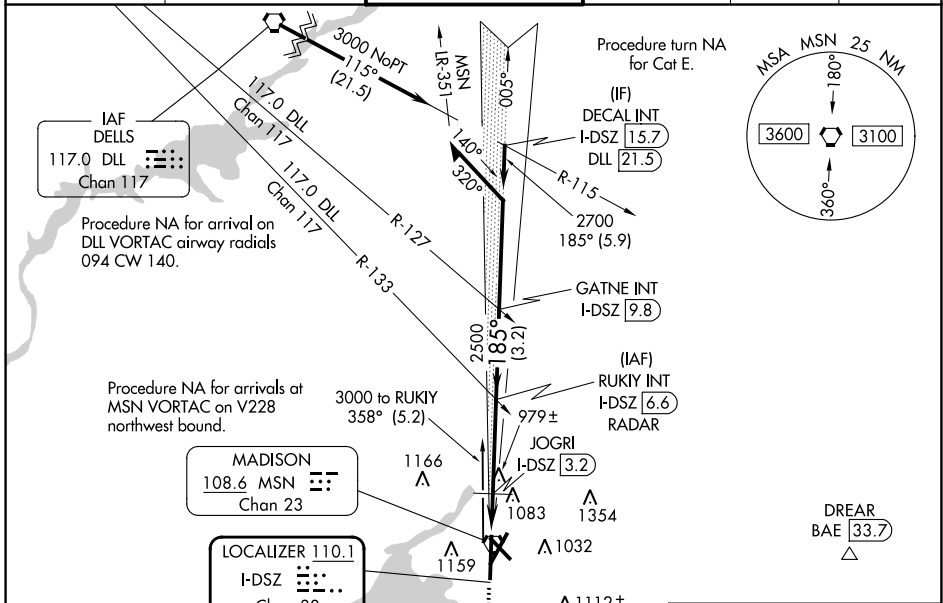
DANE COUNTY RGNL/TRUAX FLD (MSN)

DME required.

For inop ALS, increase S-ILS 18 Cat E visibility to RVR 4000 and S-LOC 18 Cat C/D/E visibility to RVR 5500.
 **RVR 1800 authorized with use of FD or AP or HUD to DA.

MALSR MISSED APPROACH: Climb to 2700 on MSN VORTAC R-180 to MONAH INT/ MSN VORTAC 4.9 DME/RADAR and hold.

ATIS 124.65 278.3	MADISON APP CON * 135.45 343.7	MADISON TOWER * 119.3 (CTAF) 0 257.8	GND CON 121.9 348.6	CLNC DEL 121.625	UNICOM 122.95
-----------------------------	--	--	-------------------------------	----------------------------	-------------------------



CATEGORY	A	B	C	D	E
S-ILS 18 **	1064/24 200 (200-1/2)				
S-LOC 18	1240/24	376 (400-1/2)	1240/35	376 (400-5/8)	
CIRCLING	1420-1 533 (600-1)	1460-1 573 (600-1)	1460-1 1/2 573 (600-1 1/2)	1700-2 3/4 813 (900-2 3/4)	1700-3 813 (900-3)

EC-3, 22 FEB 2024 to 21 MAR 2024

EC-3, 22 FEB 2024 to 21 MAR 2024

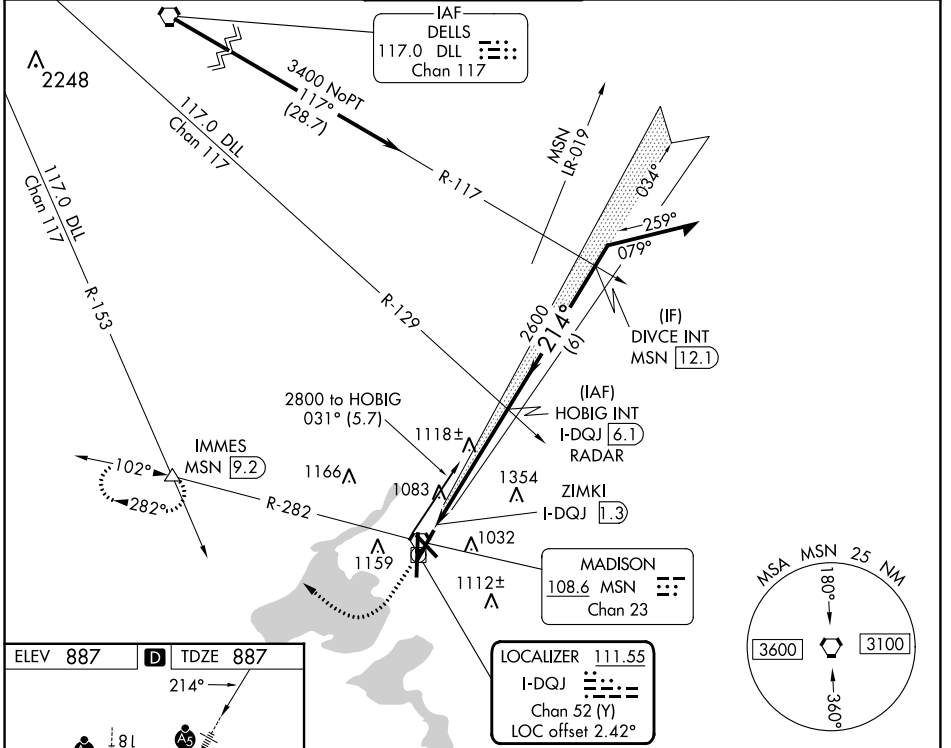
LOC/DME I-DQJ 111.55 Chan 52 (Y)	APP CRS 214°	Rwy Idg TDZE Apt Elev	7015 887 887
---	------------------------	-----------------------------	---

ILS or LOC RWY 21

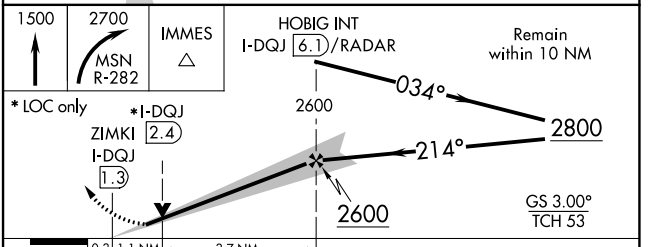
DANE COUNTY RGNL/TRUAX FLD (MSN)

For inop MALSR, increase S-LOC 21 Cat C/D visibility to 1 3/8 mile.	MALSR	MISSED APPROACH: Climb to 1500 then climbing right turn to 2700 on MSN VORTAC R-282 to IMMES INT/MSN 9.2 DME and hold.			

ATIS 124.65 278.3	MADISON APP CON * 135.45 343.7	MADISON TOWER * 119.3 (CTAF) 257.8	GND CON 121.9 348.6	CINC DEL 121.625	UNICOM 122.95
-----------------------------	--	--	-------------------------------	----------------------------	-------------------------



ELEV 887	D TDZE 887



CATEGORY	A	B	C	D
S-ILS 21	1137-1/2 250 (300-1/2)			
S-LOC 21	1380-1/2	493 (500-1/2)	1380-1	493 (500-1)
CIRCLING	1420-1 533 (600-1)	1460-1 573 (600-1)	1460-1 1/2 573 (600-1 1/2)	1700-2 3/4 813 (900-2 3/4)

EC-3, 22 FEB 2024 to 21 MAR 2024

EC-3, 22 FEB 2024 to 21 MAR 2024

LOC/DME I-MSN 110.1 Chan 38	APP CRS 005°	Rwy Idg TDZE 862 Apt Elev 887
---	------------------------	---

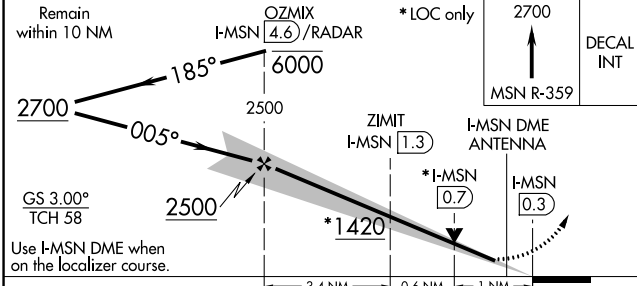
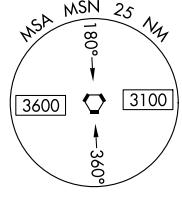
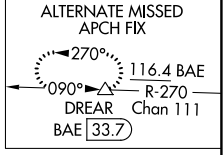
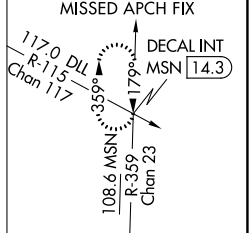
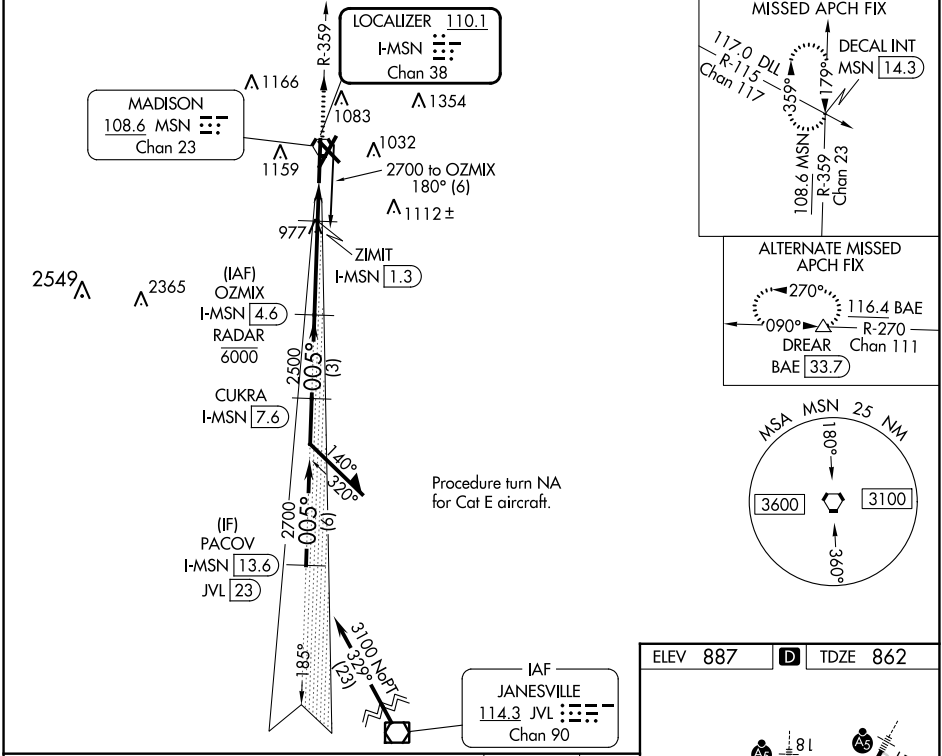
ILS or LOC/DME RWY 36

DANE COUNTY RGNL/TRUAX FLD (MSN)

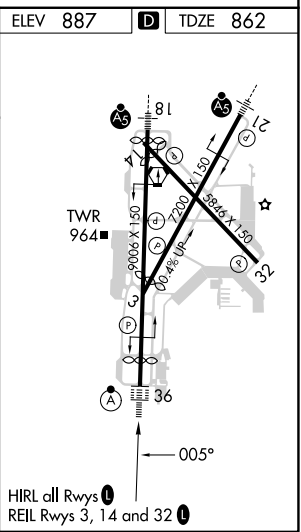
⚠ DME or RADAR required. For inop ALSF-2, increase S-ILS 36 Cat E visibility to RVR 4000 and S-LOC 36 Cat C/D/E visibility to RVR 5500.
⚠ **RVR 1800 authorized with use of FD or AP or HUD to DA.

ALSF-2 **(A)** MISSED APPROACH: Climb to 2700 on MSN VORTAC R-359 to DECAL INT/MSN 14.3 DME and hold.

ATIS 124.65 278.3	MADISON APP CON * 135.45 343.7	MADISON TOWER * 119.3 (CTAF) 0 257.8	GND CON 121.9 348.6	CLNC DEL 121.625	UNICOM 122.95
-----------------------------	--	--	-------------------------------	----------------------------	-------------------------



CATEGORY	A	B	C	D	E
S-ILS 36 **	1062/24 200 (200-½)				
S-LOC 36	1240/24	378 (400-½)	1240/35	378 (400-¾)	
CIRCLING	1420-1 533 (600-1)	1460-1 573 (600-1)	1460-1½ 573 (600-1½)	1700-2¾ 813 (900-¾)	1700-3 813 (900-3)



WAAS CH 86821 W14A	APP CRS 139°	Rwy Idg TDZE Apt Elev	5369 861 887
--	------------------------	-----------------------------	---

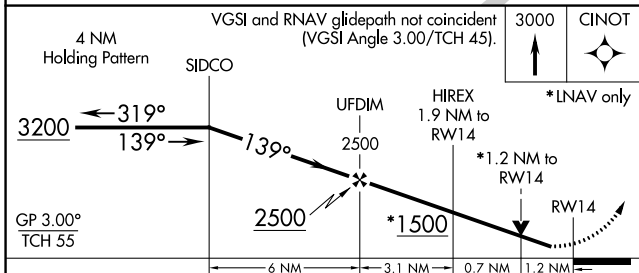
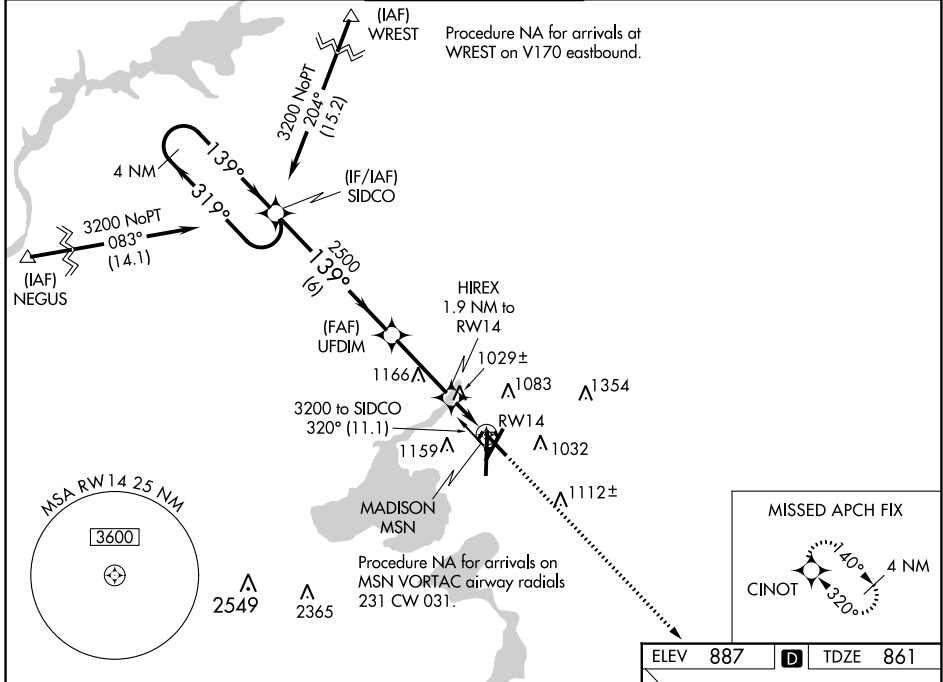
RNAV (GPS) RWY 14

DANE COUNTY RGNL/TRUAX FLD (MSN)

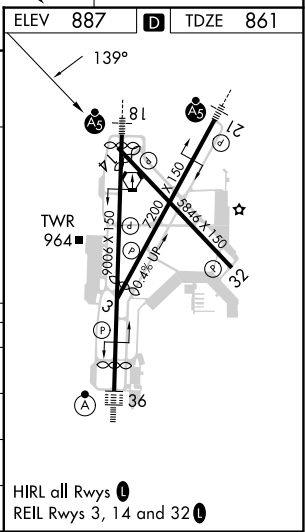
⚠ For uncompensated Baro-VNAV systems, LNAV/VNAV NA below -19°C (-2°F) or above 54°C (130°F). Helicopter visibility reduction below ¾ SM NA. DME/DME RNP-0.3 NA.

⚠ MISSED APPROACH: Climb to 3000 direct CINOT and hold.

ATIS 124.65 278.3	MADISON APP CON * 135.45 343.7	MADISON TOWER * 119.3 (CTAF) 257.8	GND CON 121.9 348.6	CLNC DEL 121.625	UNICOM 122.95
-----------------------------	--	--	-------------------------------	----------------------------	-------------------------



CATEGORY	A	B	C	D
LPV DA		1111-¾	250 (300-¾)	
LNAV/VNAV DA		1246-1¼	385 (400-1¼)	
LNAV MDA	1280-1	419 (400-1)	1280-1¼	419 (400-1¼)
C CIRCLING	1420-1 533 (600-1)	1460-1 573 (600-1)	1460-1½ 573 (600-1½)	1700-2¾ 813 (900-2¾)



EC-3, 22 FEB 2024 to 21 MAR 2024

EC-3, 22 FEB 2024 to 21 MAR 2024

WAAS CH 42522 W18A	APP CRS 185°	Rwy Idg TDZE Apt Elev	8606 864 887
--	------------------------	-----------------------------	---

RNAV (GPS) RWY 18

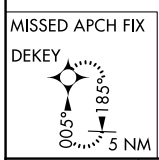
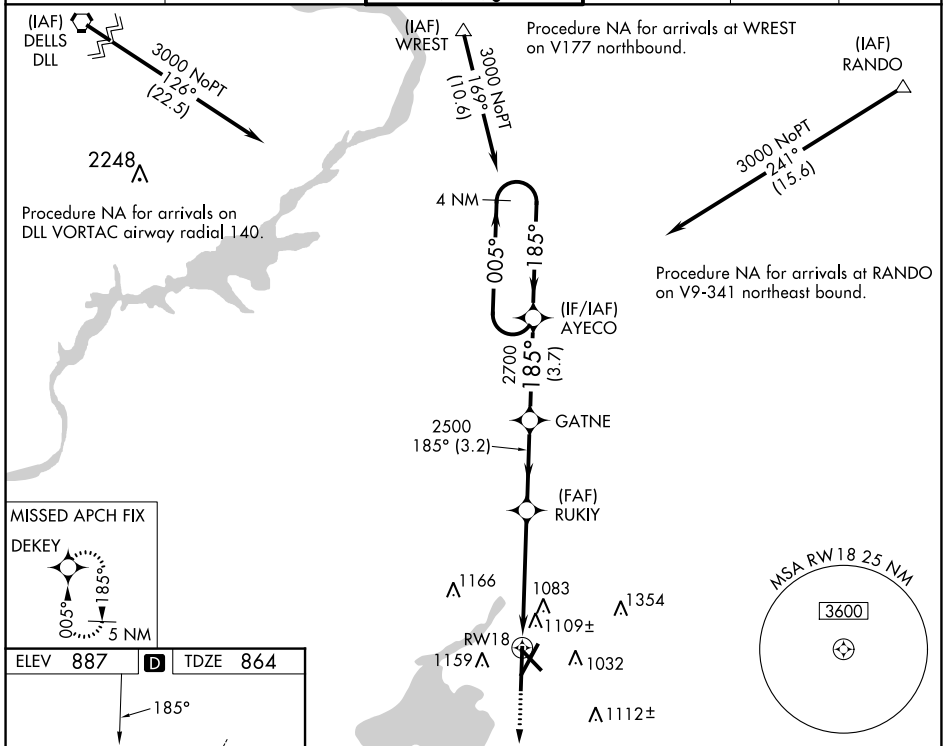
DANE COUNTY RGNL/TRUAX FLD (MSN)

⚠ For uncompensated Baro-VNAV systems, LNAV/VNAV NA below -19°C (-2°F) or above 54°C (130°F), DME/DME RNP-0.3 NA. For inop MALSR, increase LNAV/VNAV all Cats visibility to 1 3/8 mile and LNAV Cat C/D visibility to 1 3/8 miles.
**** RVR 1800 authorized with use of FD or AP or HUD to DA.**

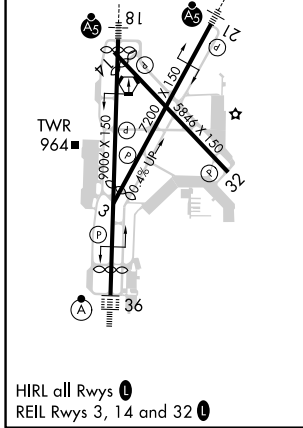


MISSED APPROACH:
Climb to 3000 direct DEKEY and hold.

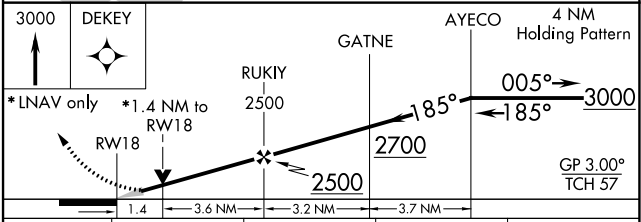
ATIS 124.65 278.3	MADISON APP CON * 135.45 343.7	MADISON TOWER * 119.3 (CTAF) 0 257.8	GND CON 121.9 348.6	CLNC DEL 121.625	UNICOM 122.95
-----------------------------	--	--	-------------------------------	----------------------------	-------------------------



ELEV 887	D	TDZE 864
-----------------	----------	-----------------



HIRL all Rwy's
REL Rwy's 3, 14 and 32



CATEGORY	A	B	C	D
LPV DA **	1064/24 200 (200-1/2)			
LNAV/VNAV DA	1360-1 1/4 496 (500-1 1/4)			
LNAV MDA	1360/24	496 (500-1/2)	1360/55	496 (500-1)
C CIRCLING	1420-1 533 (600-1)	1460-1 573 (600-1)	1460-1 1/2 573 (600-1 1/2)	1700-2 3/4 813 (900-2 3/4)

EC-3, 22 FEB 2024 to 21 MAR 2024

EC-3, 22 FEB 2024 to 21 MAR 2024

WAAS CH 42829 W21A	APP CRS 212°	Rwy Idg TDZE 887 Apt Elev 887	7015
--	------------------------	---	-------------

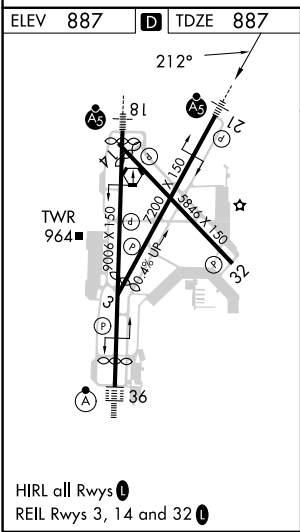
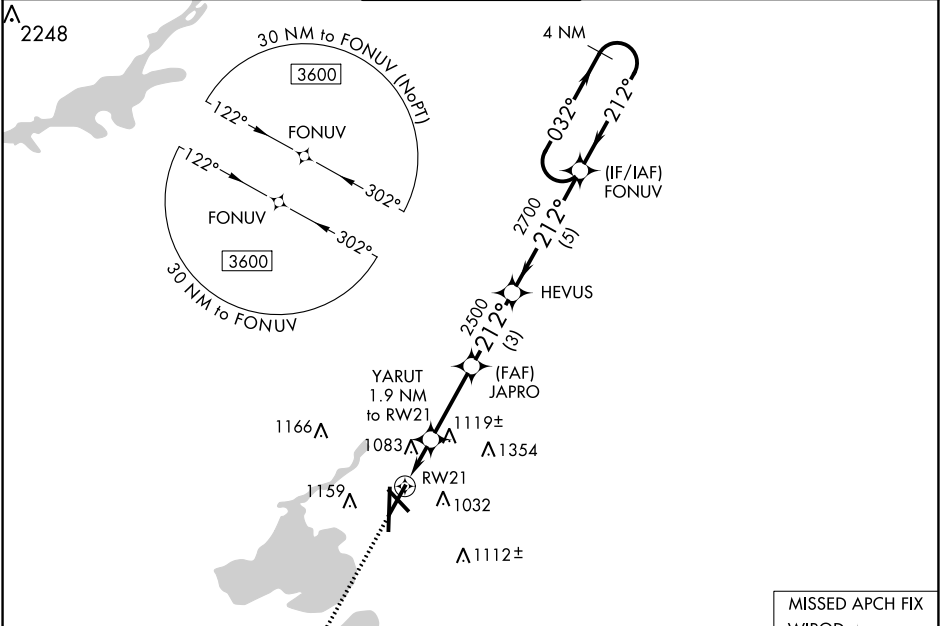
RNAV (GPS) RWY 21
DANE COUNTY RGNL/TRUAX FLD (MSN)

⚠ For uncompensated Baro-VNAV systems, LNAV/VNAV NA below -20°C (-4°F) or above 54°C (130°F). DME/DME RNP-0.3 NA. For inop MALSR, increase LNAV/VNAV all Cats visibility to 1¾ mile and LNAV Cat C/D visibility to 1½ mile.



MISSED APPROACH:
Climb to 3600 direct WIROD and hold.

ATIS 124.65 278.3	MADISON APP CON * 135.45 343.7	MADISON TOWER * 119.3 (CTAF) 0 257.8	GND CON 121.9 348.6	CLNC DEL 121.625	UNICOM 122.95
-----------------------------	--	--	-------------------------------	----------------------------	-------------------------



ELEV 887	D	TDZE 887		
3600	WIROD	* LNAV only	FONUV 4 NM Holding Pattern	
↑	YARUT 1.9 NM to RW21	JAPRO 2500	HEVUS 2700	
	* 1.4 NM to RW21	* 1540	2700	
	1.4 NM	0.5	3 NM	
			5 NM	
			GP 3.00° TCH 53	
CATEGORY	A	B	C	D
LPV DA	1087-½		200 (200-½)	
LNAV/VNAV DA	1412-1¾		525 (600-1¾)	
LNAV MDA	1380-½		1380-1 493 (500-1)	
C CIRCLING	1420-1 533 (600-1)	1460-1 573 (600-1)	1460-1½ 573 (600-1½)	1700-2¾ 813 (900-2¾)

EC-3, 22 FEB 2024 to 21 MAR 2024

EC-3, 22 FEB 2024 to 21 MAR 2024

WAAS CH 87029 W03A	APP CRS 032°	Rwy Idg TDZE Apt Elev	6769 860 887
--	------------------------	-----------------------------	---

RNAV (GPS) RWY 3

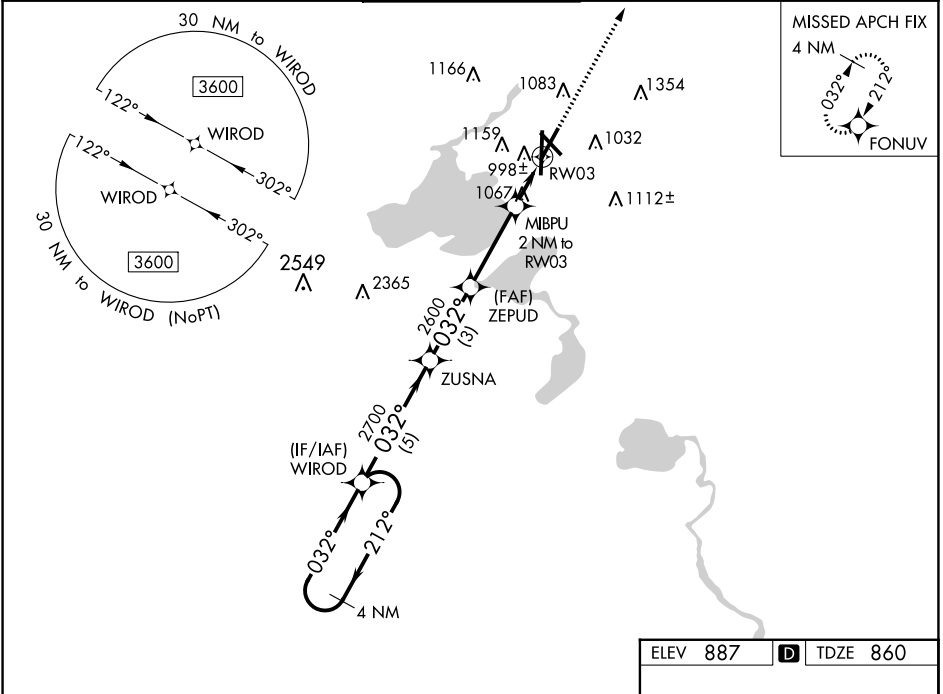
DANE COUNTY RGNL/TRUAX FLD (MSN)



For uncompensated Baro-VNAV systems, LNAV/VNAV NA below -20°C (-4°F) or above 54°C (130°F). DME/DME RNP-0.3 NA.

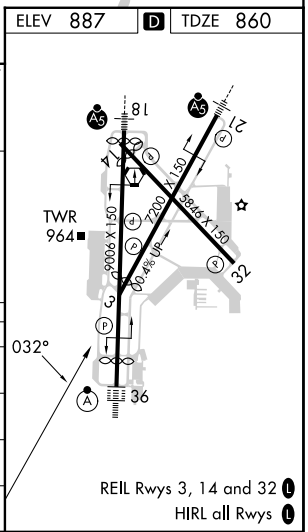
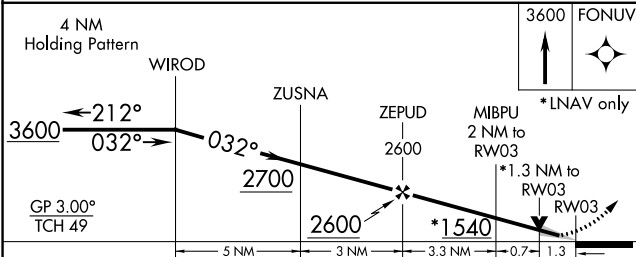
MISSED APPROACH: Climb to 3600 direct FONUV and hold.

ATIS 124.65 278.3	MADISON APP CON * 135.45 343.7	MADISON TOWER * 119.3 (CTAF) 257.8	GND CON 121.9 348.6	CLNC DEL 121.625	UNICOM 122.95
-----------------------------	--	--	-------------------------------	----------------------------	-------------------------



EC-3, 22 FEB 2024 to 21 MAR 2024

EC-3, 22 FEB 2024 to 21 MAR 2024



CATEGORY	A	B	C	D
LPV DA		1060-¾	200 (200-¾)	
LNAV/VNAV DA		1179-1	319 (300-1)	
LNAV MDA	1320-1	460 (500-1)	1320-1¾	460 (500-1¾)
CIRCLING	1420-1 533 (600-1)	1460-1 573 (600-1)	1460-1½ 573 (600-1½)	1700-2¾ 813 (900-2¾)

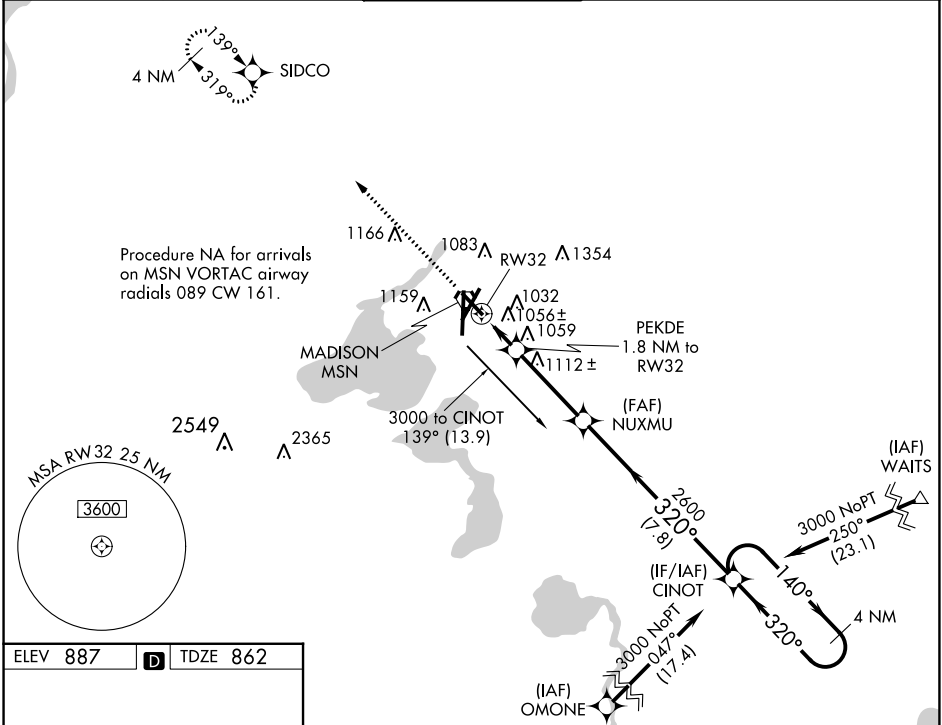
WAAS CH 58021 W32A	APP CRS 320°	Rwy Idg TDZE Apt Elev	5846 862 887
--	------------------------	-----------------------------	---

RNAV (GPS) RWY 32
DANE COUNTY RGNL/TRUAX FLD (MSN)

⚠ For uncompensated Baro-VNAV systems, LNAV/VNAV NA below -19°C (-2°F) or above 54°C (130°F). DME/DME RNP-0.3 NA. Helicopter visibility reduction below ¾ SM NA.

MISSED APPROACH: Climb to 3200 direct SIDCO and hold.

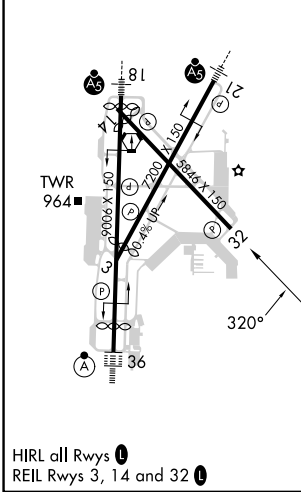
ATIS 124.65 278.3	MADISON APP CON * 135.45 343.7	MADISON TOWER * 119.3 (CTAF) 0 257.8	GND CON 121.9 348.6	CINC DEL 121.625	UNICOM 122.95
-----------------------------	--	--	-------------------------------	----------------------------	-------------------------



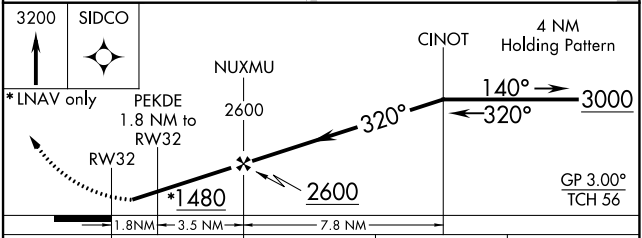
EC-3, 22 FEB 2024 to 21 MAR 2024

EC-3, 22 FEB 2024 to 21 MAR 2024

ELEV 887	D	TDZE 862
----------	----------	----------



HIRL all Rwy's
REIL Rwy's 3, 14 and 32



CATEGORY	A	B	C	D
LPV DA	1232-1¼		370 (400-1¼)	
LNAV/VNAV DA	1237-1¼		375 (400-1¼)	
LNAV MDA	1360-1 498 (500-1)		1360-1¾ 498 (500-1¾)	
C CIRCLING	1420-1 533 (600-1)	1460-1 573 (600-1)	1460-1½ 573 (600-1½)	1700-2¾ 813 (900-2¾)

WAAS CH 82721 W36A	APP CRS 005°	Rwy Idg TDZE Apt Elev	8005 862 887
--	------------------------	-----------------------------	---

RNAV (GPS) RWY 36

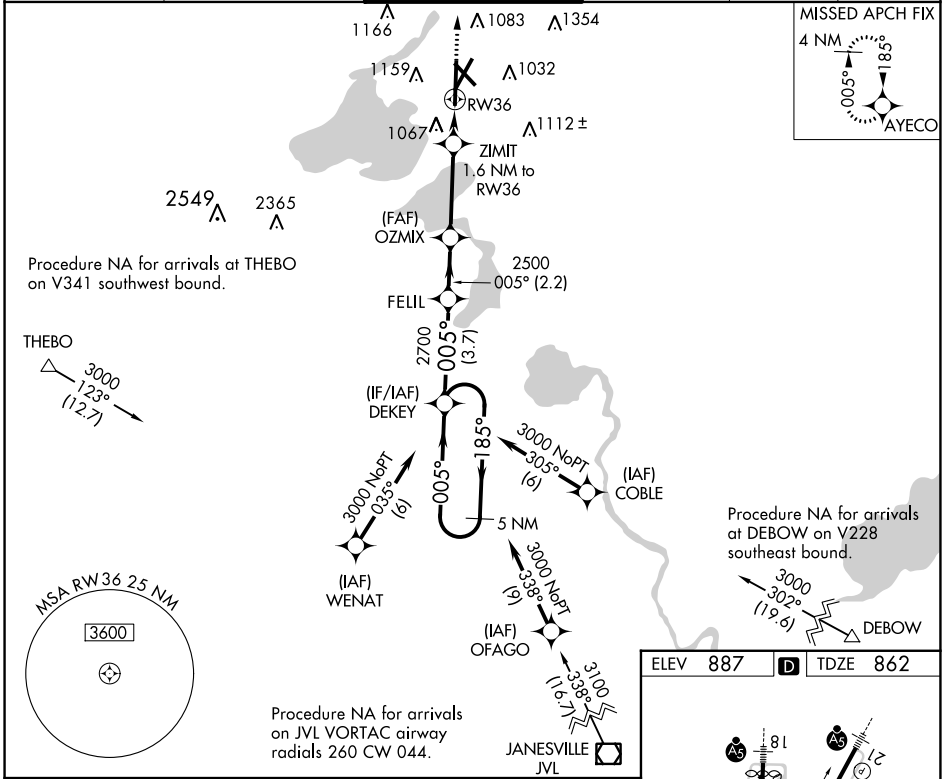
DANE COUNTY RGNL/TRUAX FLD (MSN)

⚠ For uncompensated Baro-VNAV systems, LNAV/VNAV NA below -19°C (-2°F) or above 54°C (130°F). DME/DME RNP-0.3 NA. For inop ALSF-2, increase LNAV/VNAV all Cats visibility to 1½ miles. **RVR 1800 authorized with use of FD or AP or HUD to DA.

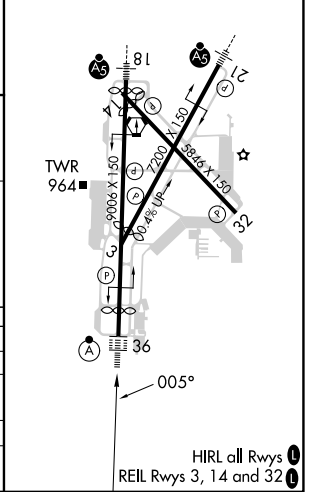
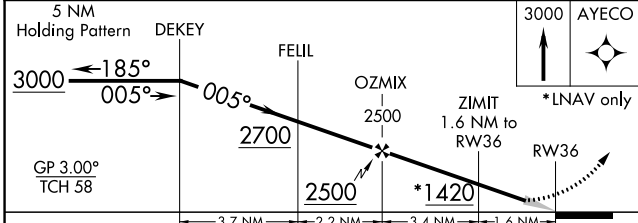
ALSF-2

MISSED APPROACH: Climb to 3000 direct AYECO and hold.

ATIS 124.65 278.3	MADISON APP CON * 135.45 343.7	MADISON TOWER * 119.3 (CTAF) 0 257.8	GND CON 121.9 348.6	CLNC DEL 121.625	UNICOM 122.95
-----------------------------	--	--	-------------------------------	----------------------------	-------------------------



ELEV 887	D	TDZE 862
----------	----------	----------



CATEGORY	A	B	C	D
LPV DA **		1062/24	200 (200-½)	
LNAV/VNAV DA		1331/60	469 (500-1¼)	
LNAV MDA	1300/24	438 (500-½)	1300/40	438 (500-¾)
CIRCLING	1420-1	1460-1	1460-1½	1700-2¾
	533 (600-1)	573 (600-1)	573 (600-1½)	813 (900-2¾)

EC-3, 22 FEB 2024 to 21 MAR 2024

EC-3, 22 FEB 2024 to 21 MAR 2024

VORTAC MSN 108.6 Chan 23	APP CRS 139°	Rwy Idg TDZE 861 Apt Elev 887
--	------------------------	---

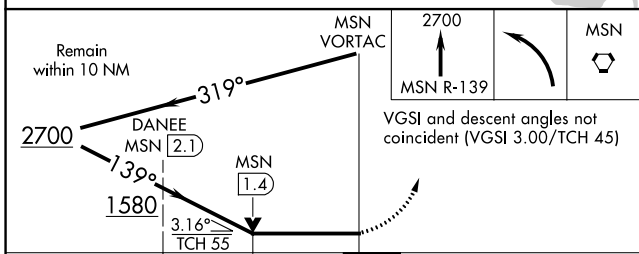
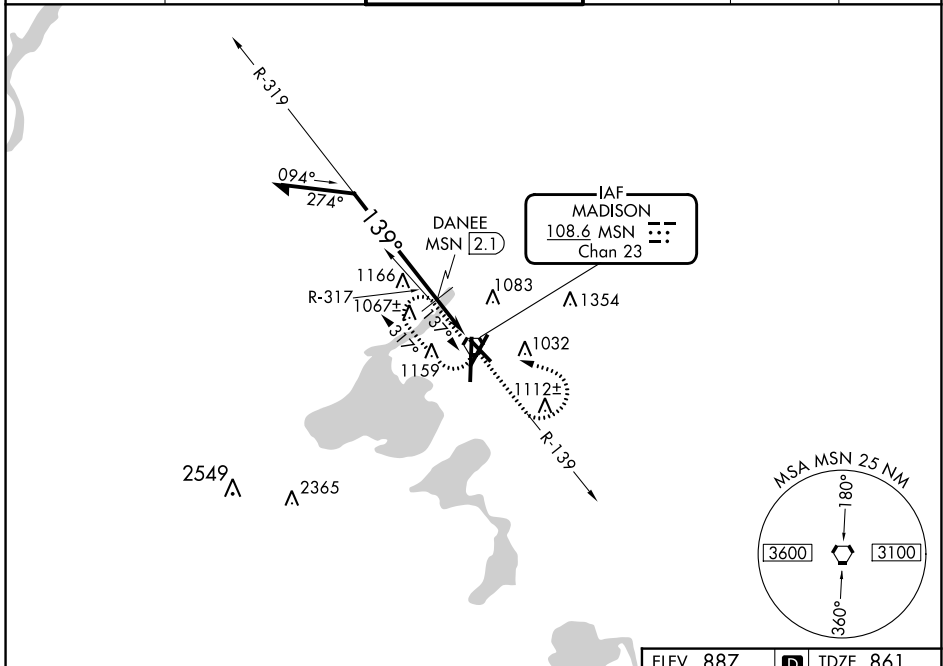
VOR RWY 14

DANE COUNTY RGNL/TRUAX FLD (MSN)

⚠ Rwy 14 helicopter visibility reduction below 3/4 SM NA.

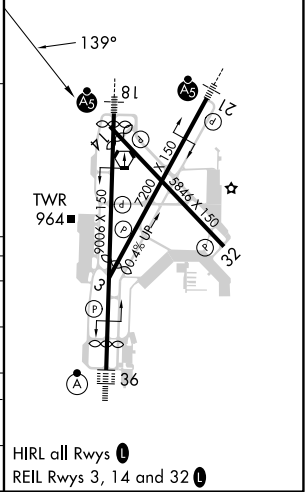
⚠ MISSED APPROACH: Climb to 2700 via MSN R-139 then left turn direct MSN VORTAC and hold.

ATIS 124.65 278.3	MADISON APP CON * 135.45 343.7	MADISON TOWER * 119.3 (CTAF) 257.8	GND CON 121.9 348.6	CLNC DEL 121.625	UNICOM 122.95
-----------------------------	--	---	-------------------------------	----------------------------	-------------------------



ELEV 887 **D** TDZE 861

CATEGORY	A	B	C	D
S-14	1580-1 719 (700-1)		1580-2 719 (700-2)	
C CIRCLING	1580-1 693 (700-1)		1580-2 693 (700-2)	1700-2 3/4 813 (900-2 3/4)
DANEE FIX MINIMUMS				
S-14	1320-1 459 (500-1)		1320-1 1/4 459 (500-1 1/4)	1320-1 1/2 459 (500-1 1/2)
C CIRCLING	1520-1 633 (700-1)		1520-1 3/4 633 (700-1 3/4)	1700-2 3/4 813 (900-2 3/4)



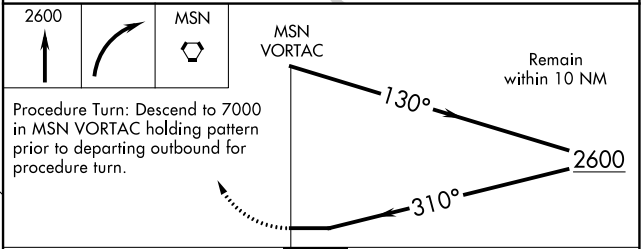
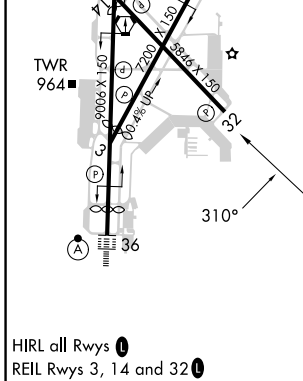
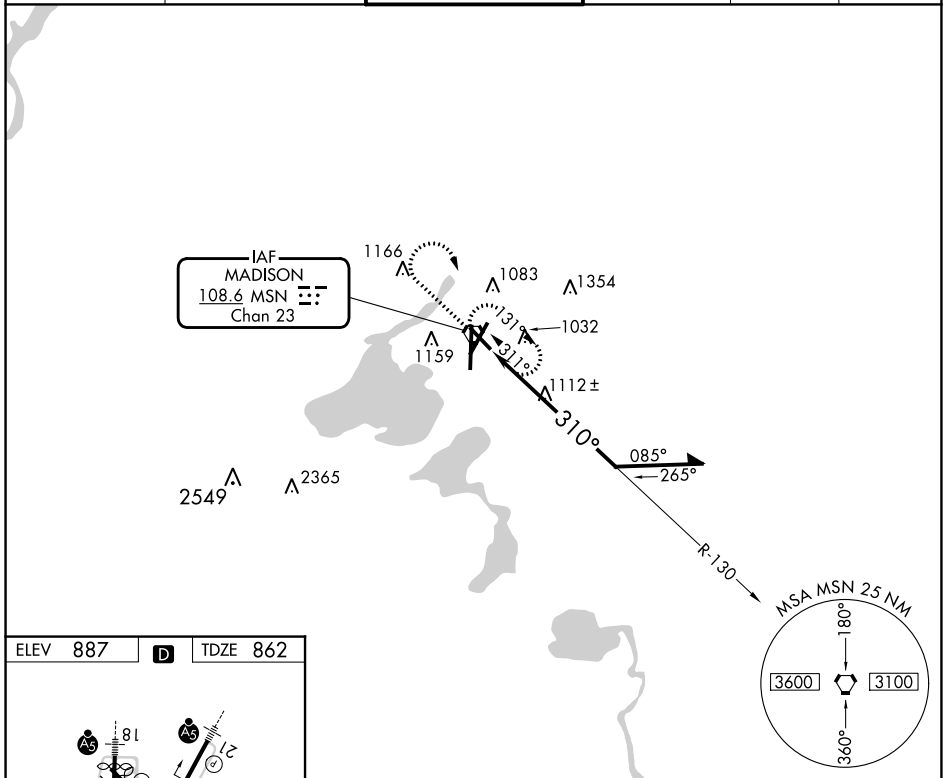
EC-3, 22 FEB 2024 to 21 MAR 2024

EC-3, 22 FEB 2024 to 21 MAR 2024

VORTAC MSN 108.6 Chan 23	APP CRS 310°	Rwy Idg 5846 TDZE 862 Apt Elev 887
--	------------------------	---

VOR RWY 32
DANE COUNTY RGNL/TRUAX FLD (MSN)

<p>⚠ When VGSi inop, Straight-In and Circling Rwy 32 procedures NA at night. Visibility reduction by helicopters NA.</p>		<p>MISSED APPROACH: Climb to 2600 then right turn direct MSN VORTAC and hold.</p>			
ATIS 124.65 278.3	MADISON APP CON * 135.45 343.7	MADISON TOWER * 119.3 (CTAF) 0 257.8	GND CON 121.9 348.6	CINC DEL 121.625	UNICOM 122.95



CATEGORY	A	B	C	D
S-32	1560-1	698 (700-1)	1560-2	698 (700-2)
C CIRCLING	1560-1	673 (700-1)	1560-2 673 (700-2)	1700-2¾ 813 (900-2¾)

EC-3, 22 FEB 2024 to 21 MAR 2024

EC-3, 22 FEB 2024 to 21 MAR 2024