

WAAS CH <b>81832</b> <b>W36A</b>	APP CRS <b>356°</b>	Rwy Idg TDZE Apt Elev	<b>3100</b> <b>99</b> <b>103</b>
--	------------------------	-----------------------------	--

# RNAV (GPS) RWY 36

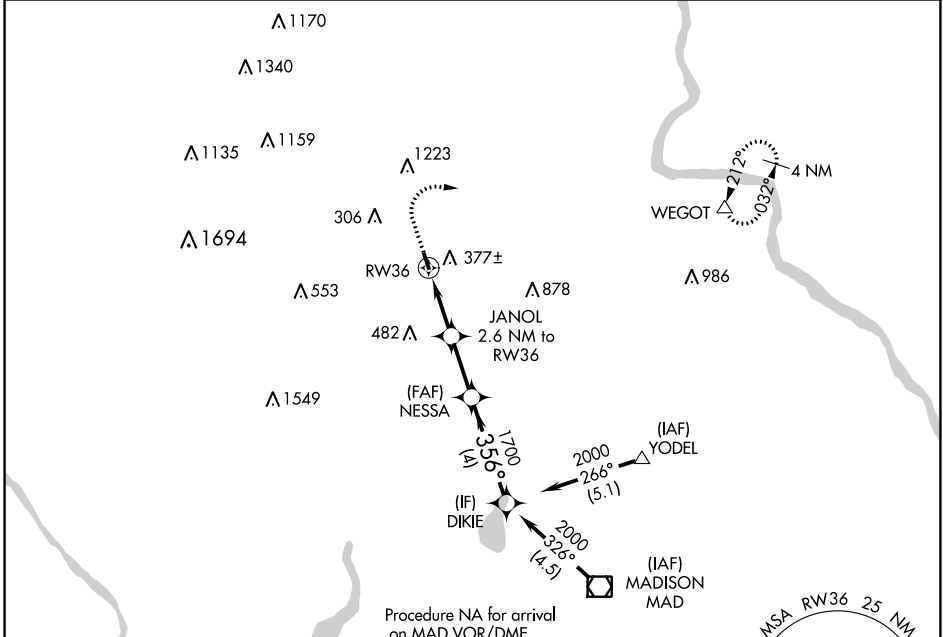
MERIDEN MARKHAM MUNI (MMK)

RNP APCH.

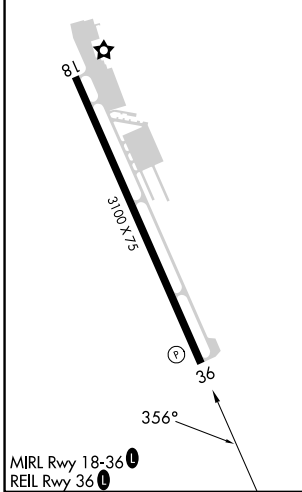
- Procedure NA at night.
- Rwy 36 helicopter visibility reduction below 1 SM NA.

MISSED APPROACH: Climb to 800 then climbing right turn to 2500 direct WEGOT and hold.

ASOS <b>134.925</b>	BRADLEY APP CON <b>127.8 269.325</b>	CLNC DEL <b>120.65</b>	UNICOM <b>123.05</b> (CTAF) <b>1</b>
------------------------	---	---------------------------	---



ELEV 103	TDZE 99
----------	---------



MIRL Rwy 18-36 **1**  
REIL Rwy 36 **1**

800	2500	WEGOT	Visual Segment - Obstacles.			
↑	↷	△				
		JANOL				
		2.6 NM to RWY 36				
		NESSA				
		DIKIE				
		2000				
		1700				
		960				
		2.6 NM	2.3 NM		4 NM	
CATEGORY	A	B	C	D		
LP MDA	660-1	561 (600-1)	NA			
LNAV MDA	760-1	661 (700-1)	NA			
<b>C</b> CIRCLING	780-1	677 (700-1)	NA			

NE-1, 22 FEB 2024 to 21 MAR 2024

NE-1, 22 FEB 2024 to 21 MAR 2024

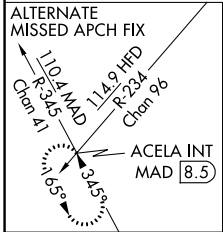
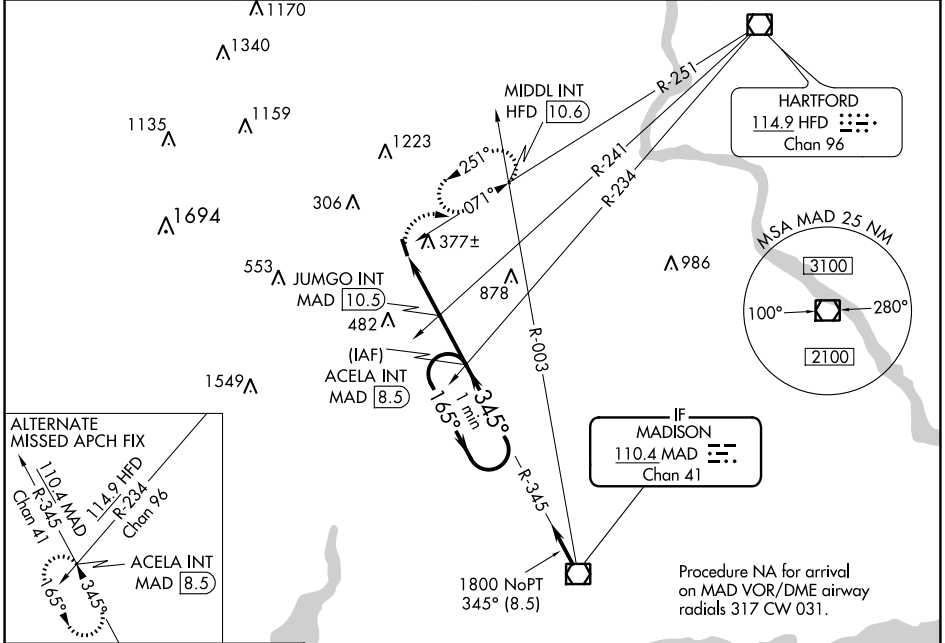
VOR/DME MAD	APP CRS	Rwy Idg	3100
<b>110.4</b>	<b>345°</b>	TDZE	<b>99</b>
Chan 41		Apt Elev	<b>103</b>

# VOR RWY 36

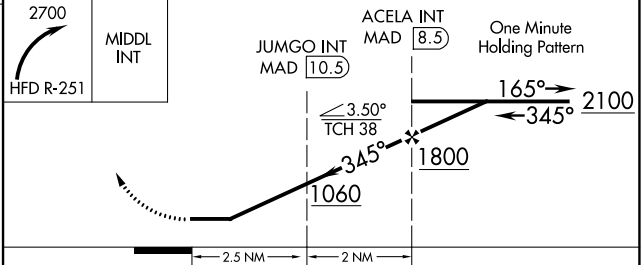
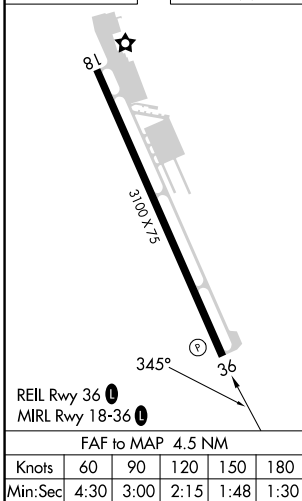
MERIDEN MARKHAM MUNI (MMK)

**▼** Rwy 36 helicopter visibility reduction below 1 SM NA. Procedure NA at night.  
**▲** MISSED APPROACH: Climbing right turn to 2700 on HFD VOR/DME R-251 to MIDL INT/HFD 10.6 DME and hold, continue climb-in-hold to 2700.

ASOS <b>134.925</b>	BRADLEY APP CON <b>127.8 269,325</b>	CLNC DEL <b>120.65</b>	UNICOM <b>123.05</b> (CTAF) <b>①</b>
------------------------	---	---------------------------	---



ELEV 103	TDZE 99
----------	---------



CATEGORY	A	B	C	D
S-36	1060-1¼ 961 (1000-1½)	1060-1½ 961 (1000-1½)		NA
<b>C</b> CIRCLING	1060-1¼ 957 (1000-1½)	1060-1½ 957 (1000-1½)		NA
JUMGO FIX MINIMUMS (DUAL VOR RECEIVERS OR DME REQUIRED)				
S-36	880-1 781 (800-1)	880-1¼ 781 (800-1½)		NA
<b>C</b> CIRCLING	880-1 777 (800-1)	920-1¼ 817 (900-1½)		NA

NE-1, 22 FEB 2024 to 21 MAR 2024

NE-1, 22 FEB 2024 to 21 MAR 2024