

APP CRS	Rwy Idg	<b>4410</b>
<b>118°</b>	TDZE	<b>1703</b>
	Apt Elev	<b>1715</b>

# RNAV (GPS) RWY 12

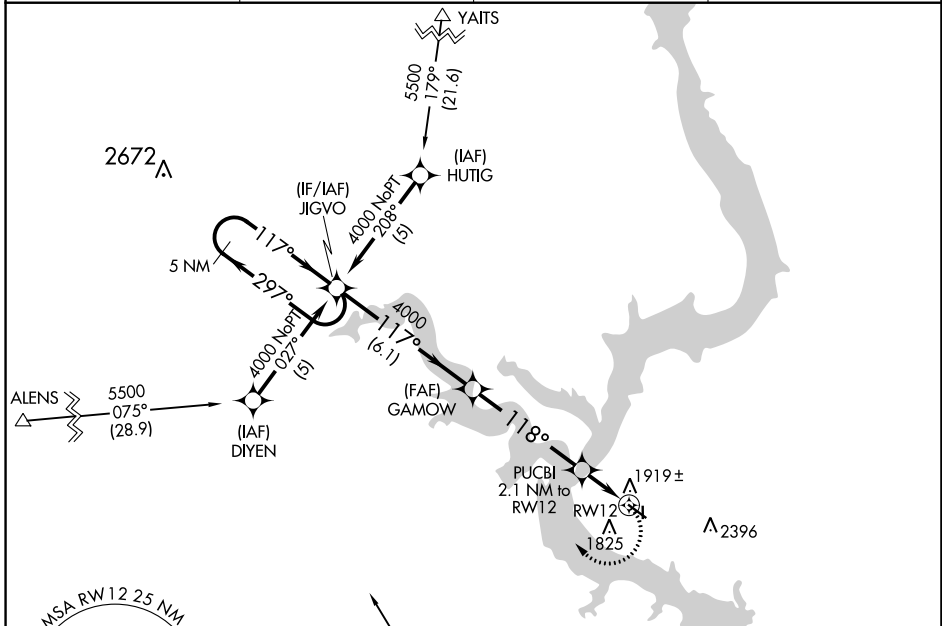
MOBRIDGE MUNI (MBG)

RNP APCH-GPS.

**▼** Rwy 12 helicopter visibility reduction below 1 SM NA. If local altimeter setting not received, use Pierre Rgnl altimeter setting and increase all MDAs 180 feet. Circling NA for Cat C and D northeast of Rwy 12-30. Procedure NA at night. Circling NA to Rwys 17 and 35.

**▲** MISSED APPROACH: Climbing right turn to 4000 direct JIGVO and hold.

ASOS <b>121.425</b>	MINNEAPOLIS CENTER <b>135.25 256.7</b>	GCO <b>121.725</b>	UNICOM <b>122.8 (CTAF) 0</b>
------------------------	---	-----------------------	---------------------------------



NC-1, 22 FEB 2024 to 21 MAR 2024

NC-1, 22 FEB 2024 to 21 MAR 2024

	ELEV 1715	TDZE 1703	
<p>VGSI and descent angles not coincident (VGSI Angle 3.00/TCH 30).</p>			
6.1 NM	4.9 NM	2.1 NM	
CATEGORY	A	B	C
LNAV MDA	2260-1	557 (600-1)	2260-1½ 557 (600-1½)
CIRCLING	2360-1	645 (700-1)	2360-1¾ 645 (700-1¾)
			D
			2260-1¾ 557 (600-1¾)
			2560-2¾ 845 (900-2¾)

MIRL Rwy 12-30 0

WAAS CH <b>72622</b> <b>W30A</b>	APP CRS <b>298°</b>	Rwy Idg <b>4410</b> TDZE <b>1701</b> Apt Elev <b>1716</b>
--	------------------------	---

# RNAV (GPS) RWY 30

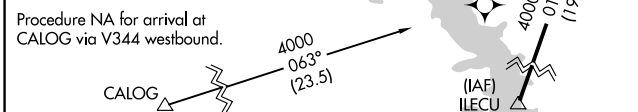
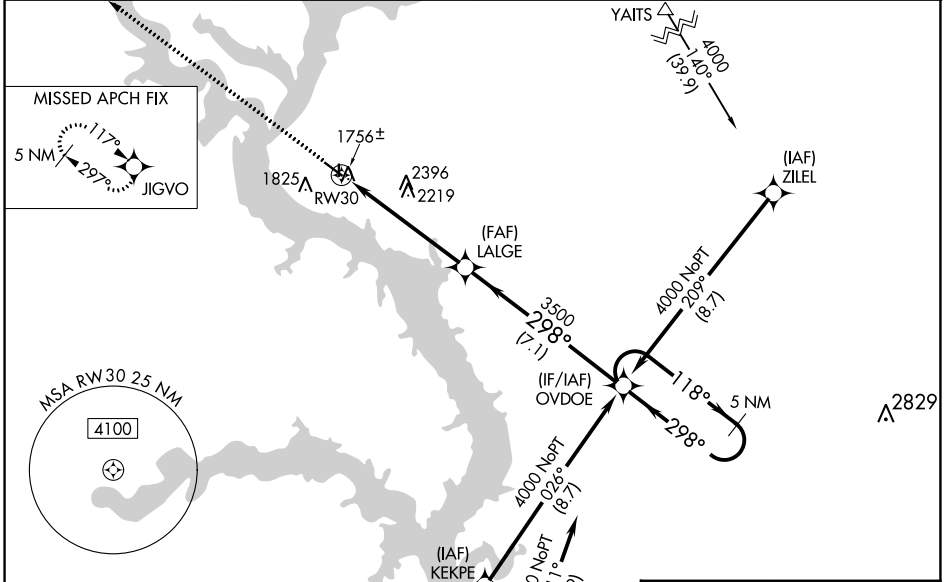
MOBRIDGE MUNI (MBG)

RNP APCH-GPS.

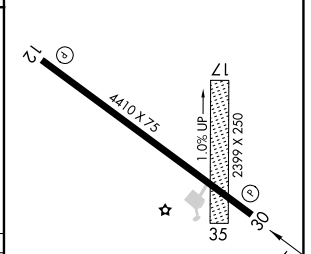
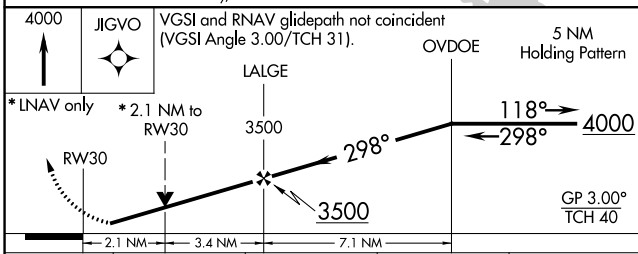
▼ Baro-VNAV NA when using Pierre Rgnl altimeter setting. For uncompensated Baro-VNAV systems, LNAV/VNAV NA below -18°C or above 33°C. Rwy 30 helicopter visibility below ¼ SM NA. VDP NA with Pierre Rgnl altimeter setting. When local altimeter setting not received, use Pierre Rgnl altimeter setting and increase all DA 165 feet and all MDA 180 feet, increase LPV and LNAV/VNAV all Cats visibility ½ mile, LNAV Cat B visibility ¼ mile, Cat C/D ½ mile, Circling Cat A/B/D ¼ mile, Cat C ½ mile. Circling NA for Cat C and D northeast of Rwy 12-30. Circling Rwy 12 NA at night. Circling NA to Rwys 17 and 35.

MISSED APPROACH: Climb to 4000 direct JIGVO and hold.

ASOS <b>121.425</b>	MINNEAPOLIS CENTER <b>135.25 256.7</b>	GCO <b>121.725</b>	UNICOM <b>122.8 (CTAF) 0</b>
------------------------	---	-----------------------	---------------------------------



ELEV 1716	TDZE 1701
-----------	-----------



CATEGORY	A	B	C	D
LPV DA		2050-1½	349 (400-1½)	
LNAV/VNAV DA		1993-1	292 (300-1)	
LNAV MDA	2400-1	699 (700-1)	2400-2	699 (700-2)
CIRCLING	2400-1	684 (700-1)	2400-2	2560-2¾ 844 (900-2¾)

MIRL Rwy 12-30 0

NC-1, 22 FEB 2024 to 21 MAR 2024

NC-1, 22 FEB 2024 to 21 MAR 2024