

WAAS Ch <b>42817</b> <b>W23A</b>	APP CRS <b>228°</b>	Rwy Idg <b>5002</b> TDZE <b>1013</b> Apt Elev <b>1013</b>
--	------------------------	---

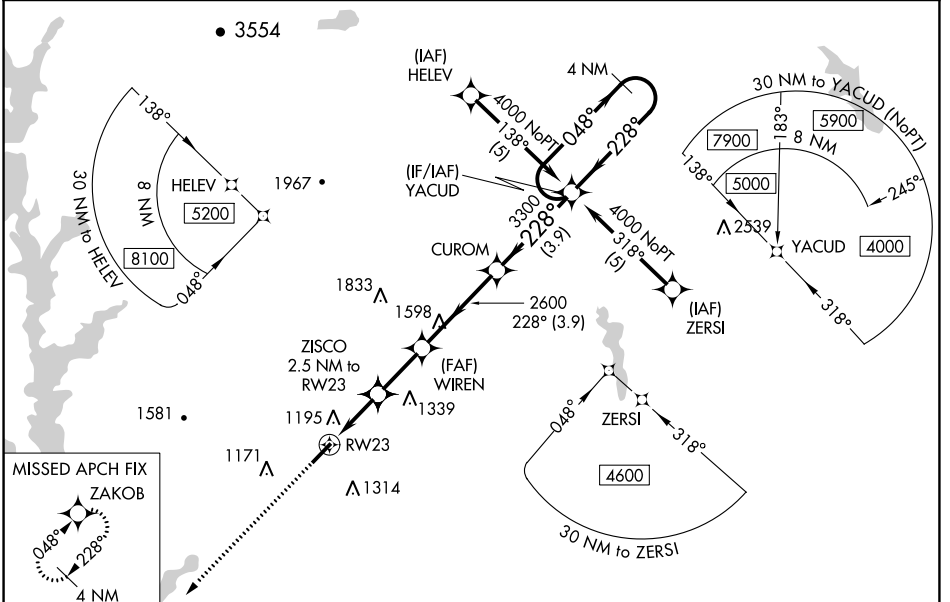
# RNAV (GPS) RWY 23

PICKENS COUNTY (L,Q,K)

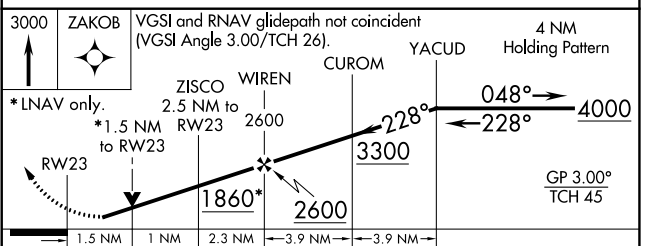
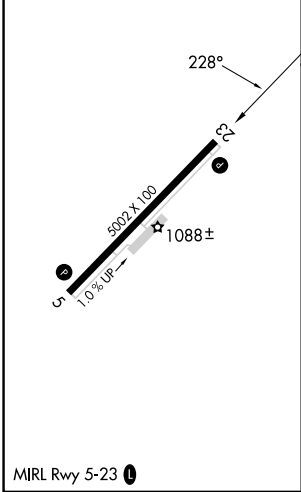
For uncompensated Baro-VNAV systems, LNAV/VNAV NA below -17°C (2°F) or above 46°C (114°F). DME/DME RNP-0.3 NA. When local altimeter setting not received, use Clemson altimeter setting and increase LPV DA to 1356 feet and visibility all Cats ¼ SM; increase LNAV/VNAV DA to 1594 feet; increase all MDAs 60 feet and LNAV Cat C and Circling Cat D visibility ½ SM, increase LNAV Cat D visibility ¼ SM. Baro-VNAV NA when using Clemson altimeter setting. VDP NA with Clemson altimeter setting.

**MISSED APPROACH:** Climb to 3000 direct ZAKOB and hold.

AWOS-3 <b>120.0</b>	GREER APP CON ★ <b>118.8 270.275</b>	UNICOM <b>122.8 (CTAF) 0</b>
------------------------	---	---------------------------------



ELEV 1013	TDZE 1013
-----------	-----------



CATEGORY	A	B	C	D
LPV DA	1310-1		297 (300-1)	
LNAV/VNAV DA	1548-2		535 (600-2)	
LNAV MDA	1500-1	487 (500-1)	1500-1½ 487 (500-1½)	1500-1½ 487 (500-1½)
CIRCLING	1560-1 547 (600-1)	1620-1 607 (700-1)	1620-1¾ 607 (700-1¾)	1780-2½ 767 (800-2½)

SE-2, 22 FEB 2024 to 21 MAR 2024

SE-2, 22 FEB 2024 to 21 MAR 2024

WAAS CH <b>99517</b> <b>W05A</b>	APP CRS <b>048°</b>	Rwy Idg <b>5002</b> TDZE <b>996</b> Apt Elev <b>1013</b>
--	------------------------	--

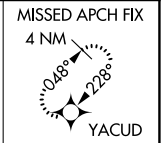
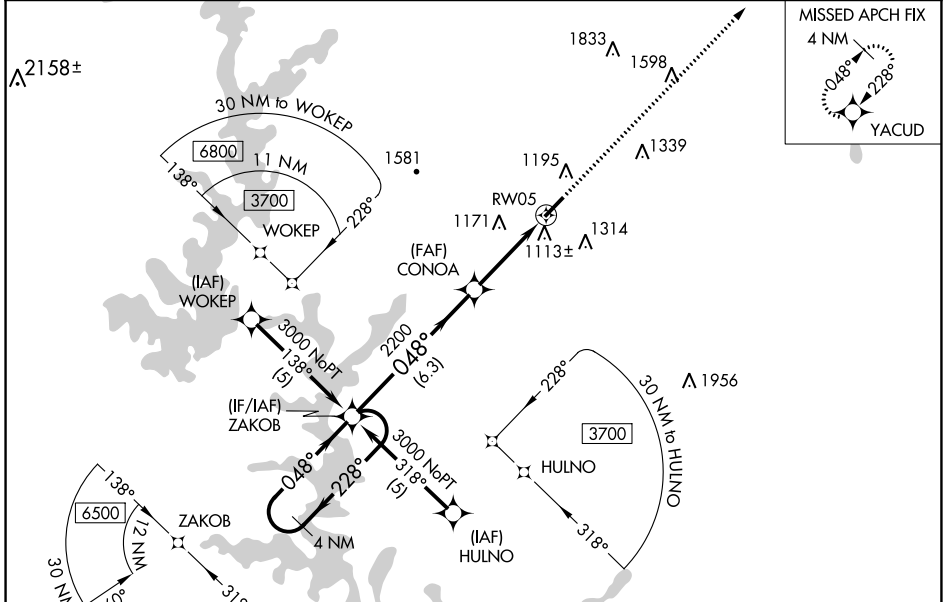
# RNAV (GPS) RWY 5

PICKENS COUNTY (L,Q,K)

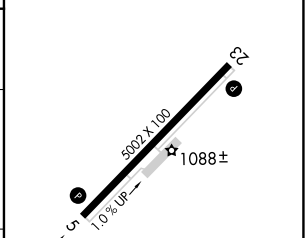
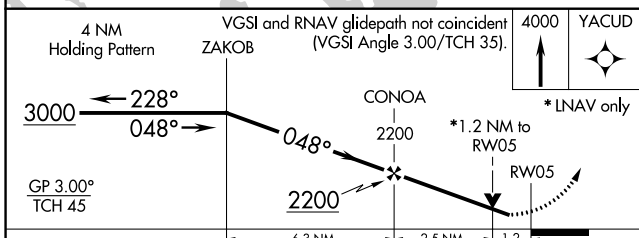
▼ For uncompensated Baro-VNAV systems, LNAV/VNAV NA below -17°C (2°F) or above 46°C (114°F). DME/DME RNP-0.3 NA. Visibility reduction by helicopters NA. When local altimeter setting not received, use Clemson altimeter setting and increase LPV DA to 1292 feet and visibility all Cats ¼ SM; increase LNAV/VNAV DA to 1487 feet; increase all MDAs 60 feet and LNAV Cat C and Circling Cat D visibility ¼ SM, and LNAV Cat D visibility ½ SM. Baro-VNAV NA when using Clemson altimeter setting. VDP NA with Clemson altimeter setting.

▲ NA MISSED APPROACH: Climb to 4000 direct YACUD and hold.

AWOS-3 <b>120.0</b>	GREER APP CON ★ <b>118.8 270.275</b>	UNICOM <b>122.8 (CTAF) 0</b>
------------------------	---	---------------------------------



ELEV <b>1013</b>	TDZE <b>996</b>
------------------	-----------------



CATEGORY	A	B	C	D
LPV DA	1246-1 250 (300-1)			
LNAV/VNAV DA	1441-1¾ 445 (500-1¾)			
LNAV MDA	1380-1	384 (400-1)	1380-1½ 384 (400-1½)	1380-1¼ 384 (400-1¼)
CIRCLING	1560-1 547 (600-1)	1620-1 607 (700-1)	1620-1¾ 607 (700-1¾)	1780-2½ 767 (800-2½)

MIRL Rwy 5-23 0

SE-2, 22 FEB 2024 to 21 MAR 2024

SE-2, 22 FEB 2024 to 21 MAR 2024