

NDB LQL 263	APP CRS 099°	Rwy ldg TDZE Apt Elev	4272 625 626
-----------------------	------------------------	-----------------------------	---

NDB RWY 10

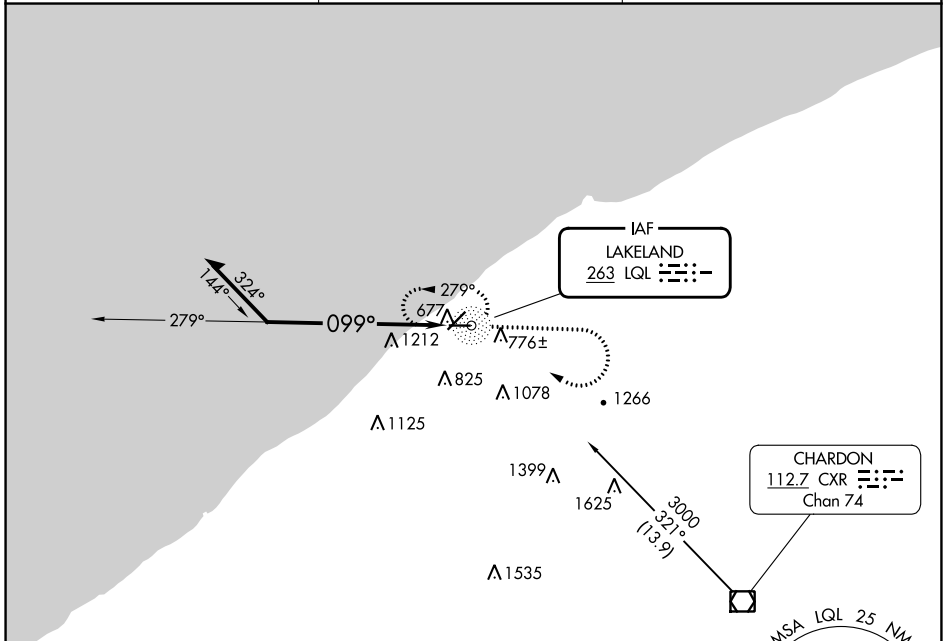
LAKE COUNTY EXEC (LNN)

RADAR required for procedure entry.

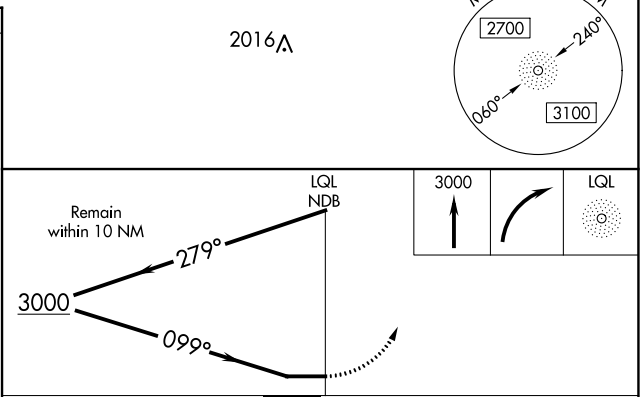
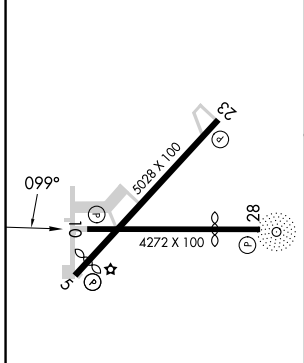
▼
▲ NA Rwy 10 helicopter visibility reduction below 3/4 SM NA.

MISSED APPROACH: Climb to 3000 then right turn direct LQL NDB and hold.

AWOS-3PT 119.225	CLEVELAND APP CON 125.35 346.325	UNICOM 122.725 (CTAF) 0
----------------------------	--	-----------------------------------



ELEV 626	TDZE 625
----------	----------



CATEGORY	A	B	C	D
S-10	1700-1¼ 1075 (1100-1¼)	1700-1½ 1075 (1100-1½)	1700-3 1075 (1100-3)	NA
CIRCLING	1700-1¼ 1074 (1100-1¼)	1700-1½ 1074 (1100-1½)	1700-3 1074 (1100-3)	NA

WILLOUGHBY, OHIO
Amdt 10B 26MAR20

41°41'N-81°23'W

LAKE COUNTY EXEC (LNN)

NDB RWY 10

EC-2, 22 FEB 2024 to 21 MAR 2024

EC-2, 22 FEB 2024 to 21 MAR 2024

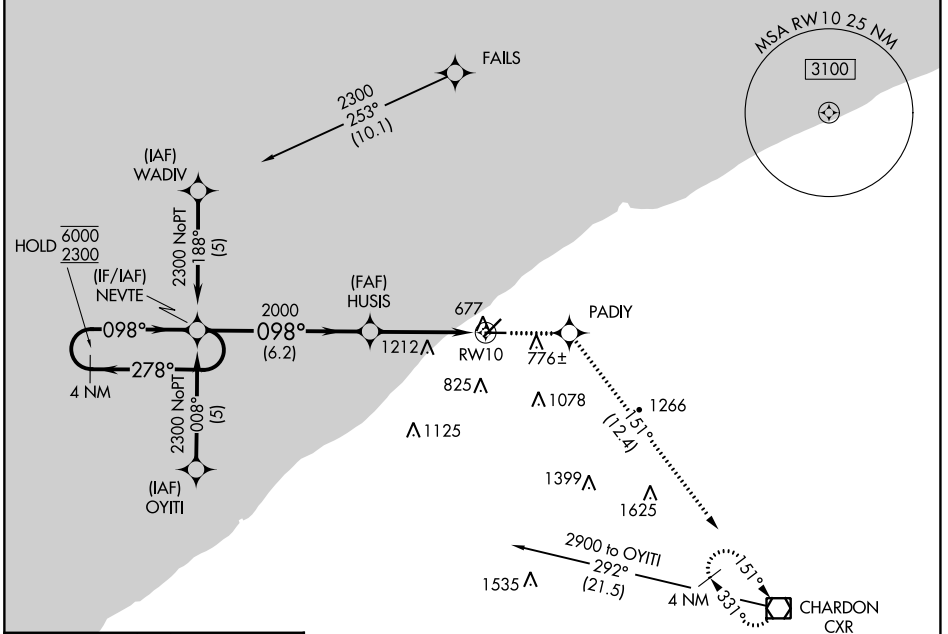
APP CRS	Rwy Idg	4272
098°	TDZE	625
	Apt Elev	626

RNAV (GPS) RWY 10

LAKE COUNTY EXEC (LNN)

RNP APCH.	MISSED APPROACH: Climb to 2900 direct PADIY and on track 151° to CXR VOR/DME and hold.
	Rwy 10 helicopter visibility reduction below 3/4 SM NA.

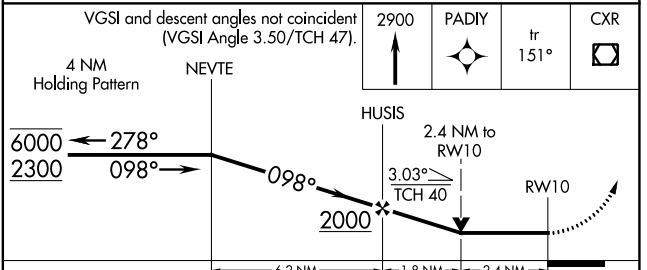
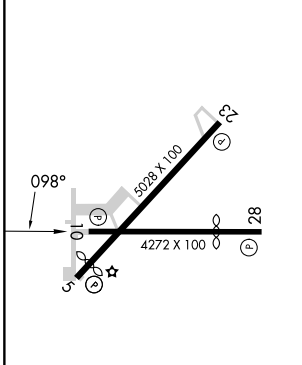
AWOS-3PT 119.225	CLEVELAND APP CON 125.35 346.325	UNICOM 122.725 (CTAF) 0
----------------------------	--	-----------------------------------



EC-2, 22 FEB 2024 to 21 MAR 2024

EC-2, 22 FEB 2024 to 21 MAR 2024

ELEV 626	TDZE 625
----------	----------



CATEGORY	A	B	C	D
RNAV MDA	1560-1 1/4	935 (1000-1 1/4)	1560-2 3/4 935 (1000-2 3/4)	NA
CIRCLING	1560-1 1/4	934 (1000-1 1/4)	1560-2 3/4 934 (1000-2 3/4)	NA

WAAS CH 82410 W23A	APP CRS 233°	Rwy Idg 5028
		TDZE 623
		Apt Elev 626

RNAV (GPS) RWY 23

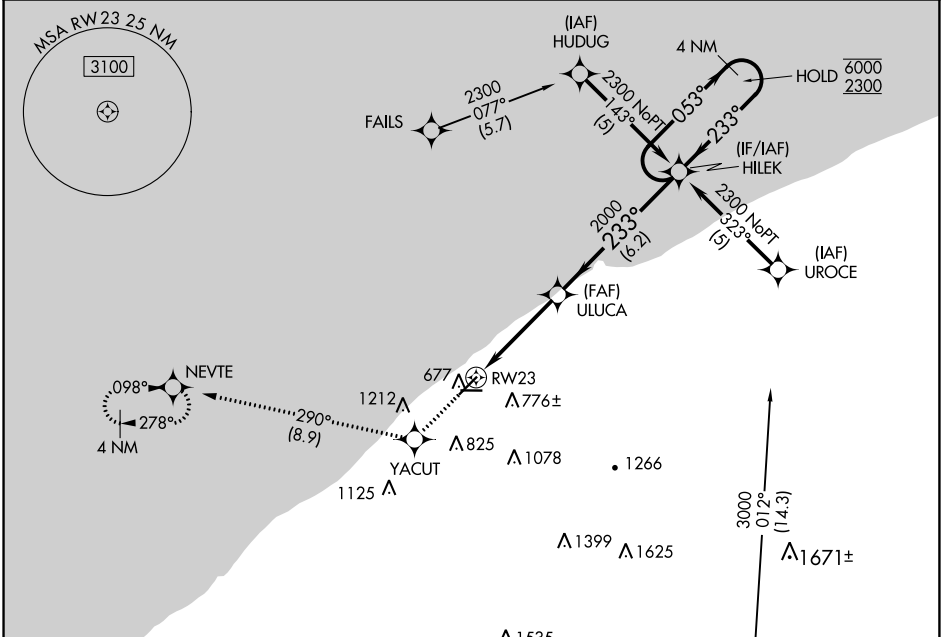
LAKE COUNTY EXEC (LNN)

RNP APCH - GPS.

▼ Rwy 23 helicopter visibility reduction below 3/4 SM NA. For uncompensated Baro-VNAV systems, LNAV/VNAV NA below -16°C or above 54°C.

MISSED APPROACH: Climb to 2300 direct YACUT and on track 290° to NEVTE and hold.

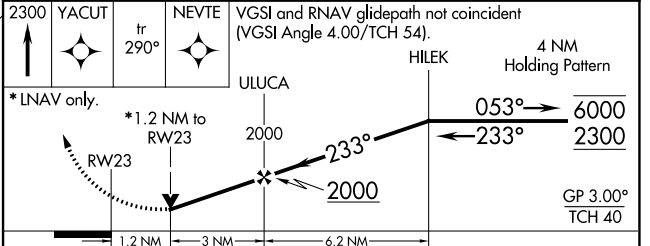
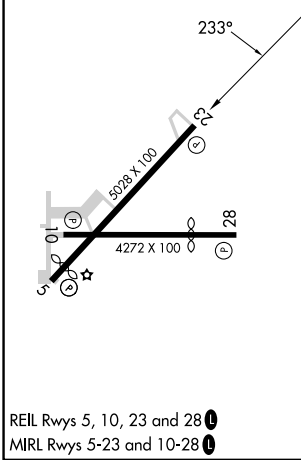
AWOS-3PT 119.225	CLEVELAND APP CON 125.35 346.325	UNICOM 122.725 (CTAF) 0
----------------------------	--	-----------------------------------



EC-2, 22 FEB 2024 to 21 MAR 2024

EC-2, 22 FEB 2024 to 21 MAR 2024

ELEV 626	TDZE 623
----------	----------



CATEGORY	A	B	C	D
LPV DA		1031-1½	408 (500-1½)	NA
LNAV/VNAV DA		1142-1¾	519 (600-1¾)	NA
LNAV MDA	1200-1	577 (600-1)	1200-1½ 577 (600-1½)	NA
CIRCLING	1200-1	574 (600-1)	1520-2¾ 894 (900-2¾)	NA

WILLOUGHBY, OHIO
 REIL Rwy 5, 10, 23 and 28
 MIRL Rwy 5-23 and 10-28

41°41'N-81°23'W

LAKE COUNTY EXEC (LNN)

RNAV (GPS) RWY 23

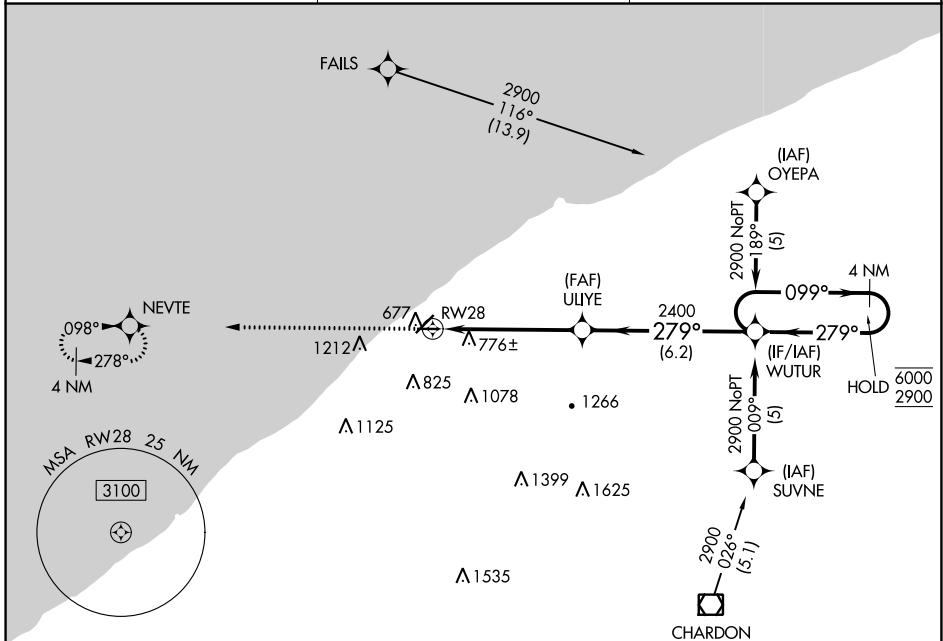
APP CRS	Rwy Idg	3148
279°	TDZE	626
	Apt Elev	626

RNAV (GPS) RWY 28

LAKE COUNTY EXEC (LNN)

RNP APCH - GPS.	MISSED APPROACH: Climb to 2300 direct NEVTE and hold.
Rwy 28 helicopter visibility reduction below 3/4 SM NA.	

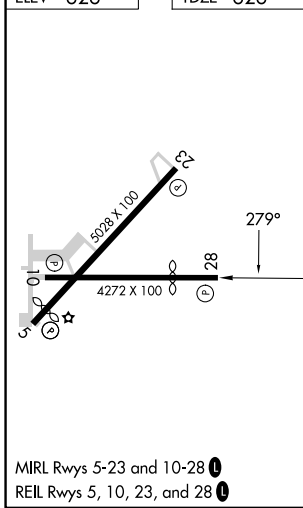
AWOS-3PT 119.225	CLEVELAND APP CON 125.35 346.325	UNICOM 122.725 (CTAF) 0
----------------------------	--	-----------------------------------



EC-2, 22 FEB 2024 to 21 MAR 2024

EC-2, 22 FEB 2024 to 21 MAR 2024

ELEV 626	TDZE 626
----------	----------



2300	NEVTE	VGSI and descent angles not coincident (VGSI Angle 3.50/TCH 26).	WUTUR	4 NM Holding Pattern
			ULIYE	
		1.6 NM to RW28	2400	6000
		≤ 3.04° TCH 40		2900
		1.6 NM	3.8 NM	6.2 NM
CATEGORY	A	B	C	D
LNAV MDA	1260-1	634 (700-1)	1260-1 3/4 634 (700-1 3/4)	NA
CIRCLING	1260-1	634 (700-1)	1520-2 3/4 894 (900-2 3/4)	NA

WILLOUGHBY, OHIO
Orig-C 08SEP22

41°41'N-81°23'W

RNAV (GPS) RWY 28

LAKE COUNTY EXEC (LNN)

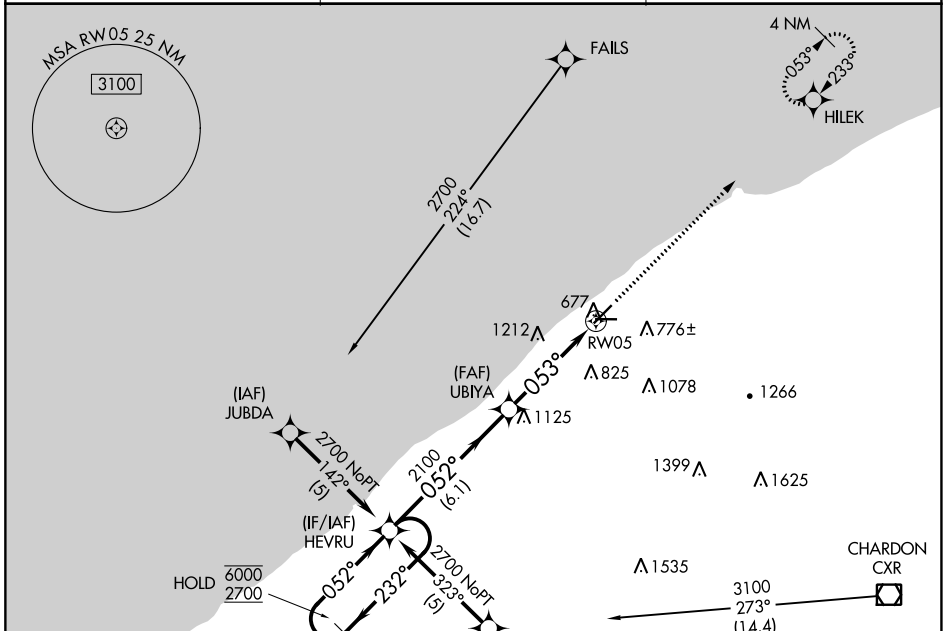
APP CRS	Rwy Idg	4600
053°	TDZE	624
	Apt Elev	626

RNAV (GPS) RWY 5

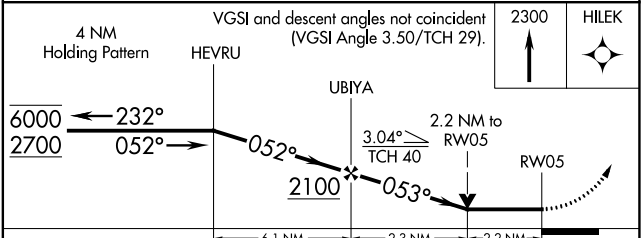
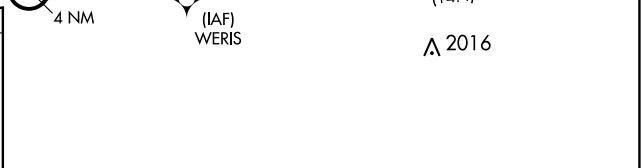
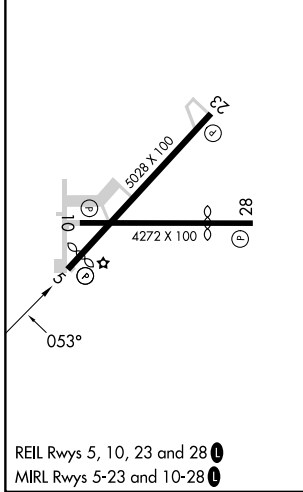
LAKE COUNTY EXEC (LNN)

RNP APCH - GPS.	MISSED APPROACH: Climb to 2300 direct HILEK and hold.
▽ ▲ Rwy 5 helicopter visibility reduction below ¼ SM NA.	

AWOS-3PT 119.225	CLEVELAND APP CON 125.35 346.325	UNICOM 122.725 (CTAF) 0
----------------------------	--	-----------------------------------



ELEV	626	TDZE	624
------	-----	------	-----



CATEGORY	A	B	C	D
LNAV MDA	1460-1 836 (900-1)	1460-1¼ 836 (900-1¼)	1460-2½ 836 (900-2½)	NA
CIRCLING	1460-1¼	834 (900-1¼)	1520-2¾ 894 (900-2¾)	NA

EC-2, 22 FEB 2024 to 21 MAR 2024

EC-2, 22 FEB 2024 to 21 MAR 2024