

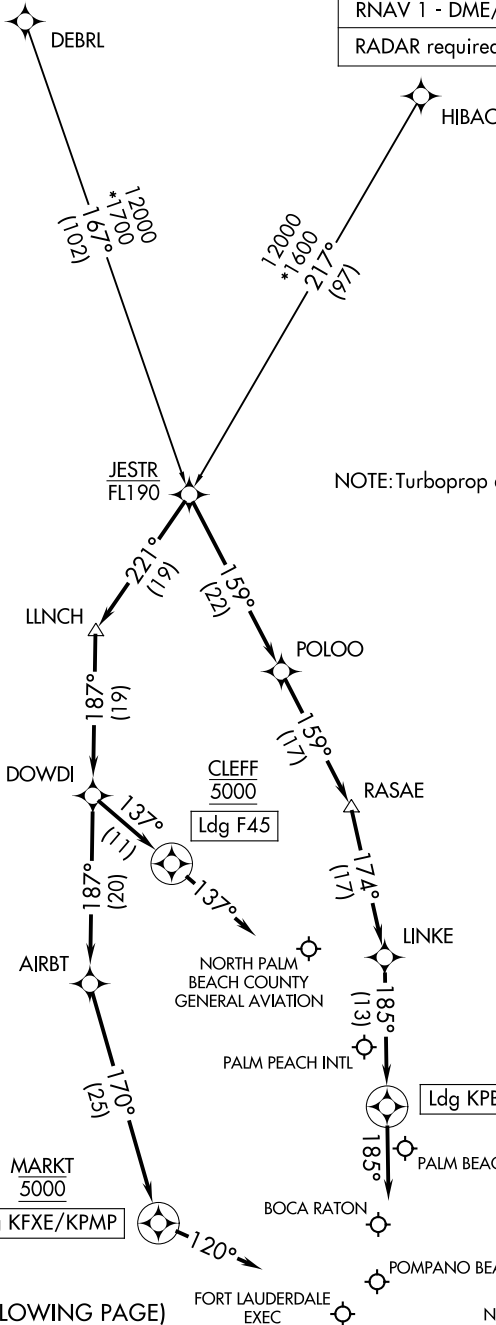
JESTR ONE ARRIVAL (RNAV)

WEST PALM BEACH, FLORIDA

PALM BEACH APP CON
 124.6 317.4
 FXE ATIS
 119.85
 PBI D-ATIS
 123.75
 PMP ATIS
 120.55

RNAV 1 - DME/DME/IRU or GPS.

RADAR required.



NOTE: Turboprop aircraft only.

SE-3, 22 FEB 2024 to 21 MAR 2024

SE-3, 22 FEB 2024 to 21 MAR 2024

(NARRATIVE ON FOLLOWING PAGE)

NOTE: Chart not to scale.

JESTR ONE ARRIVAL (RNAV)

WEST PALM BEACH, FLORIDA

ARRIVAL ROUTE DESCRIPTION

DEBRL TRANSITION (DEBRL.JESTR1)

HIBAC TRANSITION (HIBAC.JESTR1)

LANDING KPBI/KLNA/KBCT: From JESTR on track 159° to POLOO, then on track 159° to RASAE, then on track 174° to LINKE, then on track 185° to cross JESNA at 5000, then on heading 185° or as assigned by ATC. Expect RADAR vectors to final approach course.

LANDING F45: From JESTR on track 221° to LLNCH, then on track 187° to DOWDI, then on track 137° to cross CLEFF at 5000, then on track 137°. Expect RADAR vectors to final approach course.

LANDING KFXE/KPMP: From JESTR on track 221° to LLNCH, then on track 187° to DOWDI, then on track 187° to AIRBT, then on track 170° to cross MARKT at 5000, then on heading 120° or as assigned by ATC. Expect RADAR vectors to final approach course.

SE-3, 22 FEB 2024 to 21 MAR 2024

SE-3, 22 FEB 2024 to 21 MAR 2024

PALM BEACH APP CON
124.6 317.4
PBI D-ATIS
123.75

MELBOURNE
115.85 MLB
Chan 105(Y)
N28°06.32'-W80°38.12'
L-23-24, H-8

NOTE: RADAR required.
NOTE: DME required.
NOTE: Turboprop and prop aircraft only.

RASAE
N27°06.01'
W80°09.44'
4000

PALM BEACH
115.7 PBI
Chan 104
N26°40.80'
W80°05.19'

Ldg all airports

WILLIAM P GWINN (Pvt)

PALM BEACH INTL

BOCA RATON

PALM BEACH COUNTY PARK

NOTE: Chart not to scale.

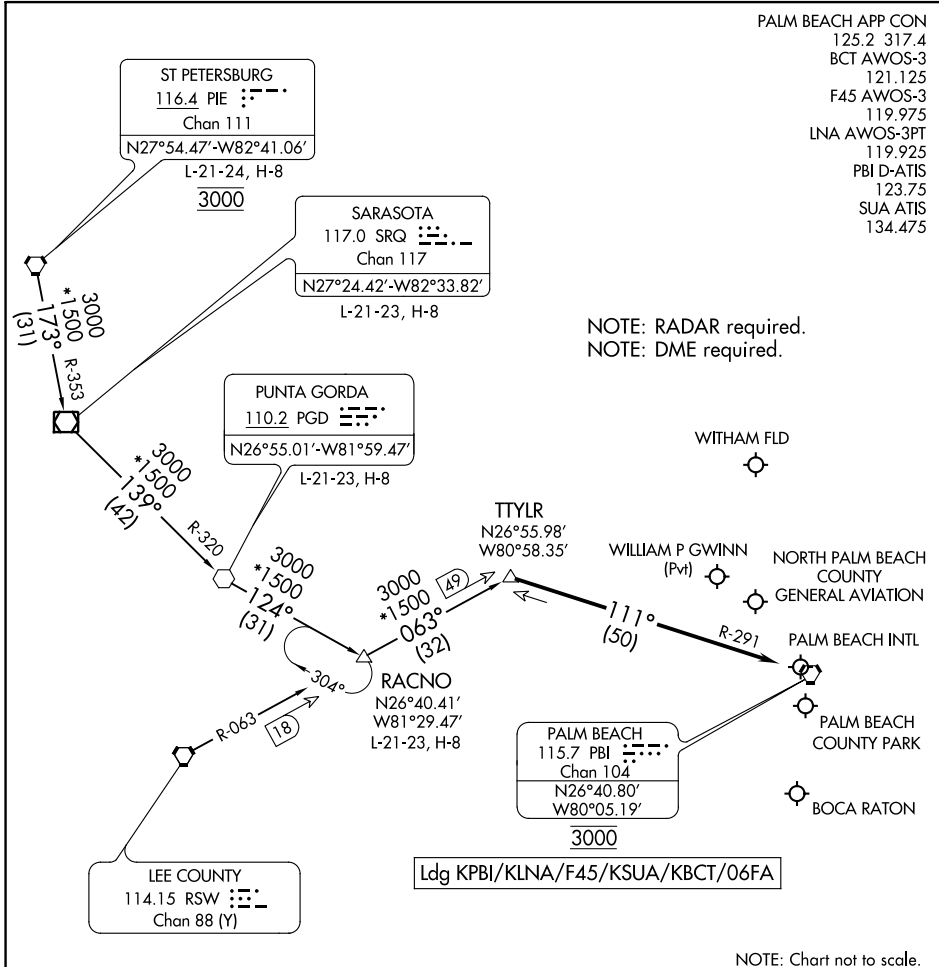
ARRIVAL ROUTE DESCRIPTION

LANDING ALL AIRPORTS: From over MELBOURNE VOR/DME (MLB) R-164 to cross RASAE at or above 4000, then on PALM BEACH VORTAC (PBI) R-354 to PBI VORTAC. Expect RADAR vectors to final approach course.

TTYLR THREE ARRIVAL

WEST PALM BEACH, FLORIDA

PALM BEACH APP CON
 125.2 317.4
 BCT AWOS-3
 121.125
 F45 AWOS-3
 119.975
 LNA AWOS-3PT
 119.925
 PBI D-ATIS
 123.75
 SUA ATIS
 134.475



NOTE: RADAR required.
 NOTE: DME required.

NOTE: Chart not to scale.

ARRIVAL ROUTE DESCRIPTION

PUNTA GORDA TRANSITION (PGD.TTYLR3): From over PGD VOR on PGD R-124 to RACNO, then on RSW R-063 to TTYLR, thence. . .

RACNO TRANSITION (RACNO.TTYLR3): From over RACNO on RSW R-063 to TTYLR, thence. . .

ST PETERSBURG TRANSITION (PIE.TTYLR3): From over PIE VORTAC on PIE R-173 and SRQ R-353 to SRQ VOR/DME, then on SRQ R-139 and PGD R-320 to PGD VOR, then on PGD R-124 to RACNO, then on RSW R-063 to TTYLR, thence. . .

LANDING ALL AIRPORTS: From TTYLR on PALM BEACH VORTAC (PBI) R-291 to cross PBI VORTAC at 3000. Expect RADAR vectors.

TTYLR THREE ARRIVAL

WEST PALM BEACH, FLORIDA

SE-3, 22 FEB 2024 to 21 MAR 2024

SE-3, 22 FEB 2024 to 21 MAR 2024