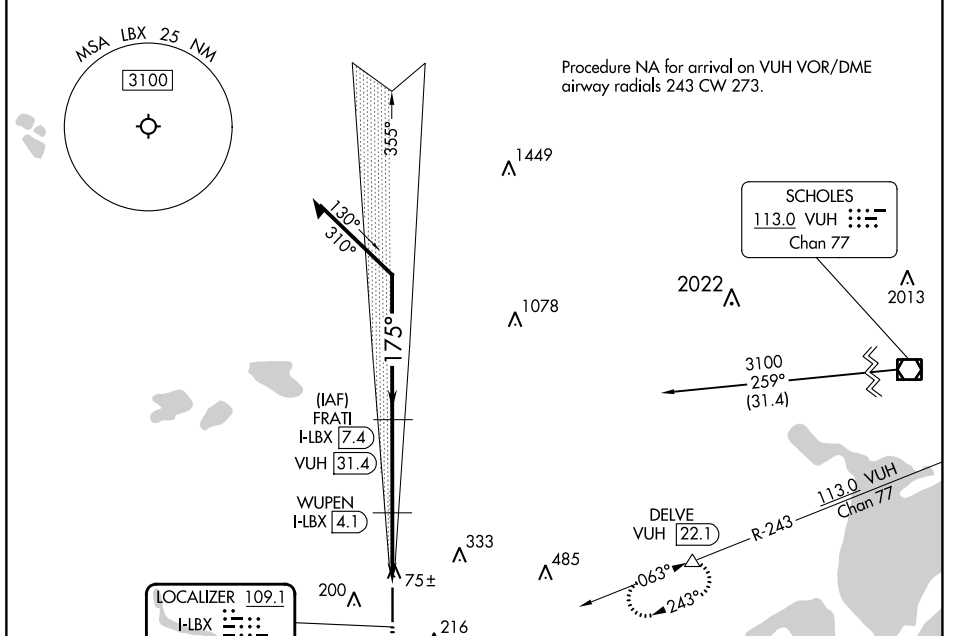


LOC/DME I-LBX 109.1 Chan 28	APP CRS 175°	Rwy Idg 7000 TDZE 25 Apt Elev 25
-------------------------------------------------	------------------------	-------------------------------------------------------------

ILS or LOC RWY 17

TEXAS GULF COAST RGNL (L.B.X)

DME required.		MALSR	MISSED APPROACH: Climb to 600 then climbing left turn to 3000 on heading 090° and VUH VOR/DME R-243 to DELVE/VUH 22.1 DME and hold, continue climb-in-hold to 3000.
ASOS 119.925	HOUSTON APP CON 134.45 284.0	CLNC DEL 125.2	UNICOM 123.0 (CTAF) 0



ELEV 25	D	TDZE 25
---------	---	---------

175°

600

3000

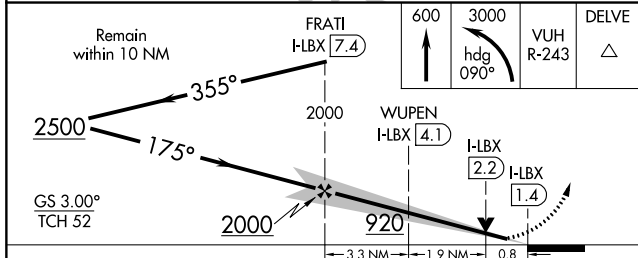
hdg 090°

VUH R-243

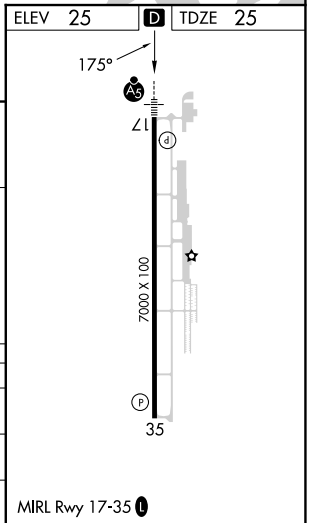
DELVE

7000 X 100

35



CATEGORY	A	B	C	D
S-ILS 17		225-½	200 (200-½)	
S-LOC 17		340-½	315 (400-½)	
CIRCLING	500-1	475 (500-1)	500-1½ 475 (500-1½)	620-2 595 (600-2)




WAAS CH 70316 W17A	APP CRS 175°	Rwy Idg TDZE 25 Apt Elev 25	7000
----------------------------------------	------------------------	-------------------------------------------------	-------------

RNAV (GPS) RWY 17


TEXAS GULF COAST RGNL (L.B.X)

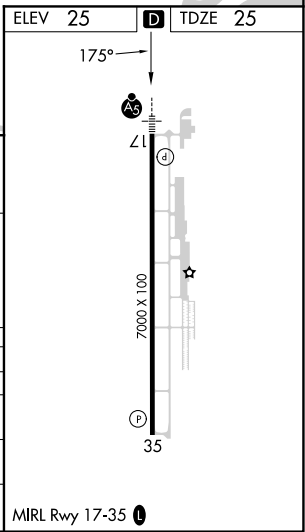
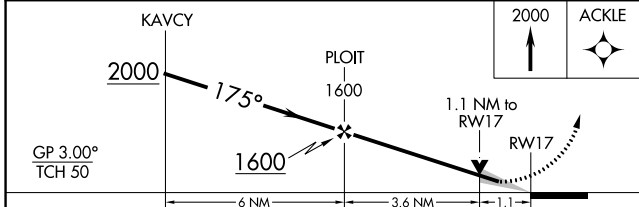
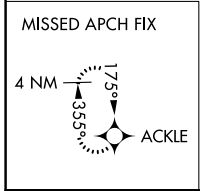
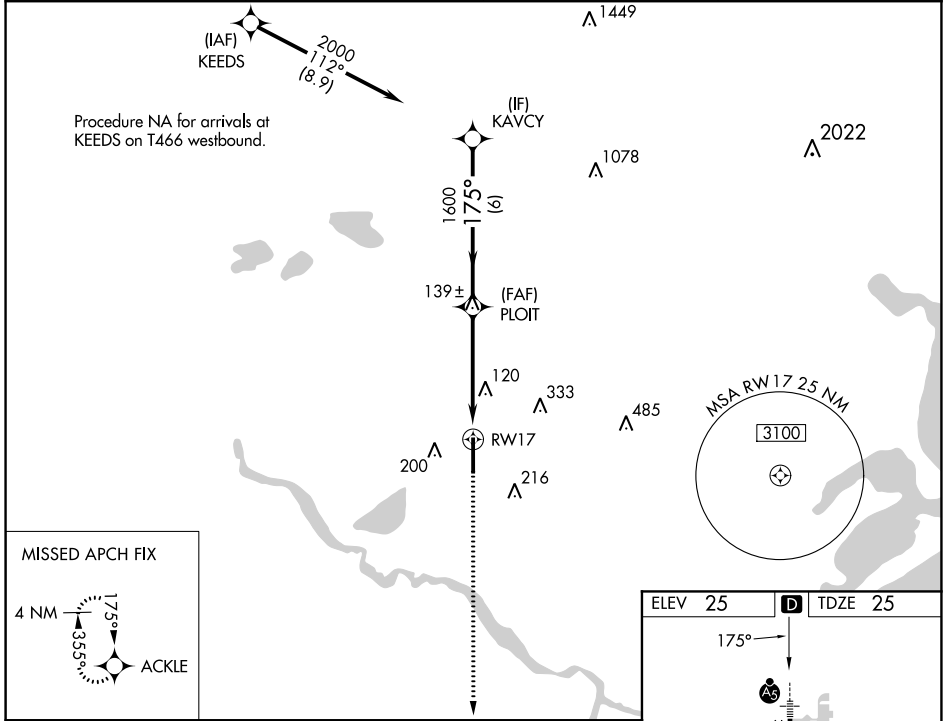
RNP APCH - GPS.

⚠ Circling NA east of Rwy 17-35. Baro-VNAV and VDP NA when using William P. Hobby altimeter setting. For uncompensated Baro-VNAV systems, LNAV/VNAV NA below -16°C or above 54°C. When local altimeter setting not received, use William P. Hobby altimeter setting and increase LPV DA to 363 feet; increase LNAV/VNAV DA to 441 feet and all visibilities ¼ SM; increase all MDAs 100 feet and LNAV visibility Cat C/D ⅓ SM, and Circling visibility Cat D ½ SM.

MALSRL 

MISSED APPROACH: Climb to 2000 direct ACKLE and hold.

ASOS 119,925	HOUSTON APP CON 134.45 284.0	CINC DEL 125.2	UNICOM 123.0 (CTAF) 
------------------------	----------------------------------------	--------------------------	-----------------------------------------------------------------------------------------------------------------



CATEGORY	A	B	C	D
LPV DA		282-½	257 (300-½)	
LNAV/VNAV DA		360-½	335 (400-½)	
LNAV MDA	420-½	395 (400-½)	420-⅝	395 (400-⅝)
C CIRCLING	480-1 455 (500-1)	500-1 475 (500-1)	500-1½ 475 (500-1½)	620-2 595 (600-2)

SC-5, 22 FEB 2024 to 21 MAR 2024

SC-5, 22 FEB 2024 to 21 MAR 2024

WAAS CH 77516 W35A	APP CRS 355°	Rwy Idg TDZE 25 Apt Elev 25	7000
----------------------------------------	------------------------	-------------------------------------------------	-------------

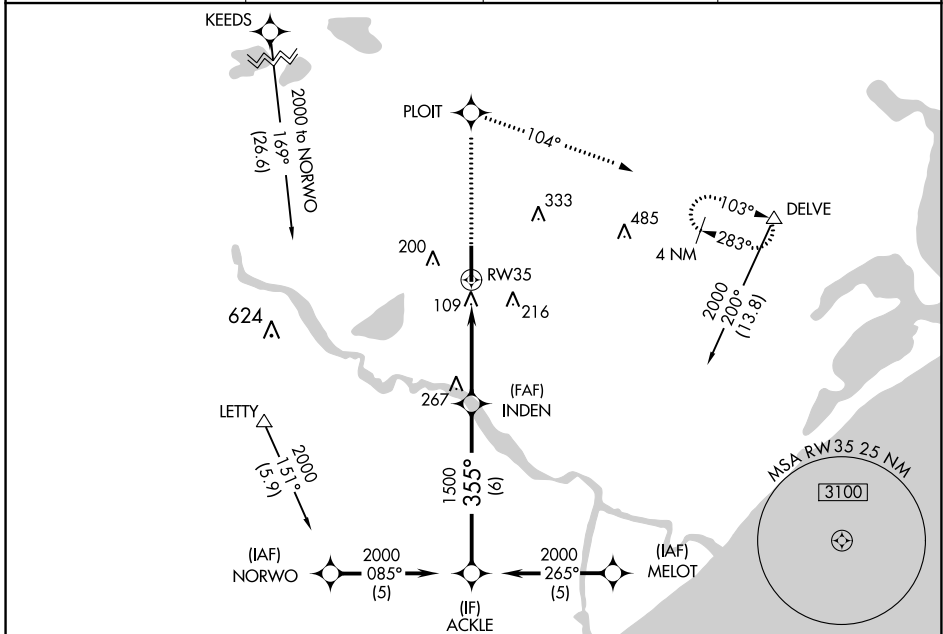
RNAV (GPS) RWY 35

TEXAS GULF COAST RGNL (L.B.X)

⚠ DME/DME RNP-0.3 NA. Baro-VNAV NA below -16°C (4°F). When local altimeter setting not received, use William P. Hobby altimeter setting and increase all DAs/MDAs 100 feet and Circling Cat D visibility ¼ SM. Baro-VNAV and VDP NA when using William P. Hobby altimeter setting. Circling NA east of Rwy 17-35.

MISSED APPROACH: Climb to 2000 direct PLOIT and right turn via 104° track to DELVE and hold.

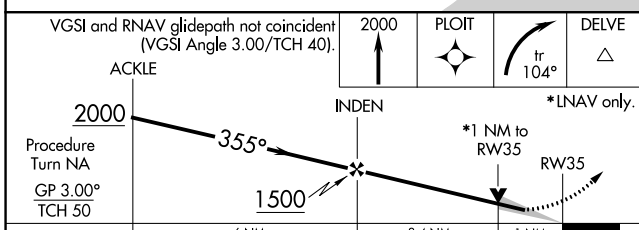
ASOS 119.925	HOUSTON APP CON 134.45 284.0	CLNC DEL 125.2	UNICOM 123.0 (CTAF) 0
------------------------	----------------------------------------	--------------------------	---------------------------------



SC-5, 22 FEB 2024 to 21 MAR 2024

SC-5, 22 FEB 2024 to 21 MAR 2024

ELEV 25	D TDZE 25
---------	------------------



CATEGORY	A	B	C	D
LPV DA		275-¾	250 (300-¾)	
LNAV/VNAV DA		428-1½	403 (500-1½)	
LNAV MDA		420-1	395 (400-1)	420-1¼ 395 (400-1¼)
C CIRCLING	480-1½ 455 (500-1½)	500-1½	475 (500-1½)	620-2 595 (600-2)

