



WAAS CH <b>50434</b> <b>W12A</b>	APP CRS <b>120°</b>	Rwy Idg TDZE Apt Elev	<b>8001</b> <b>2777</b> <b>2777</b>
--	------------------------	-----------------------------	---

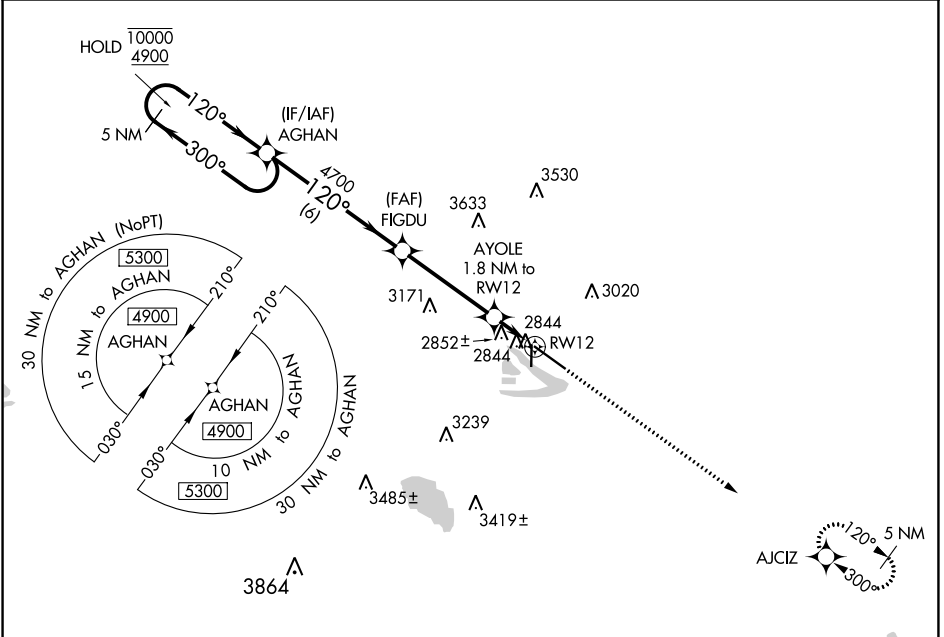
# RNAV (GPS) RWY 12

NORTH PLATTE RGNL/LEE BIRD FLD (LBF')

RNP APCH-GPS. MISSED APPROACH: Climb to 4700 direct AJCIZ and hold.

**⚠** For uncompensated Baro-VNAV systems, LNAV/VNAV NA below -23°C or above 52°C.

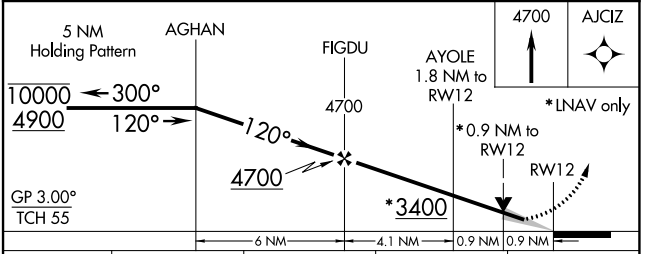
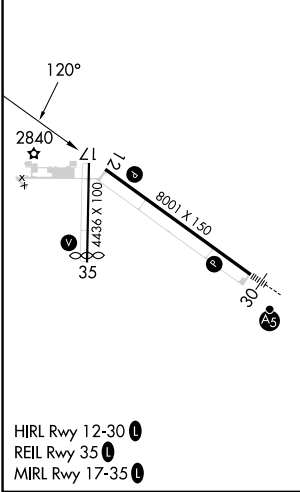
ASOS <b>118.425</b>	DENVER CENTER <b>132.7 226.675</b>	CLNC DEL <b>132.7</b>	UNICOM <b>123.0 (CTAF)</b>
------------------------	---------------------------------------	--------------------------	-------------------------------



NC-2, 22 FEB 2024 to 21 MAR 2024

NC-2, 22 FEB 2024 to 21 MAR 2024

ELEV 2777	<b>D</b>	TDZE 2777
-----------	----------	-----------



CATEGORY	A	B	C	D
LPV DA	2977-3/4 200 (200-3/4)			
LNAV/VNAV DA	3027-3/4 250 (300-3/4)			
LNAV MDA	3120-1 343 (400-1)			
<b>C</b> CIRCLING	3280-1 503 (600-1)	3340-1 563 (600-1)	3420-1 3/4 643 (700-1 3/4)	3560-2 1/2 783 (800-2 1/2)

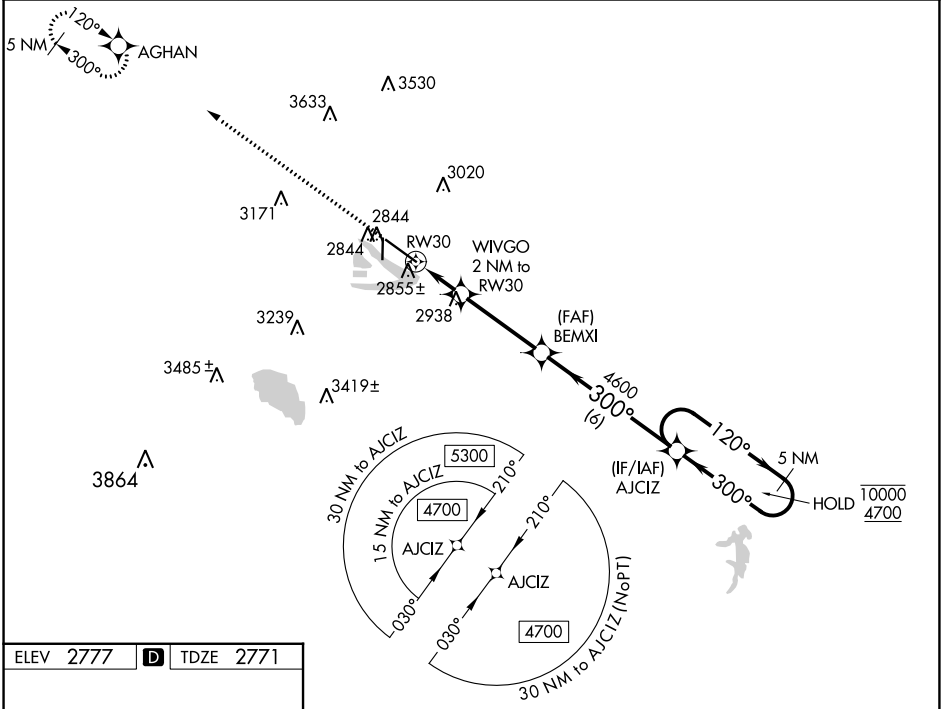
WAAS CH <b>60915</b> <b>W30A</b>	APP CRS <b>300°</b>	Rwy Idg TDZE Apt Elev	<b>8001</b> <b>2771</b> <b>2777</b>
--	------------------------	-----------------------------	---

# RNAV (GPS) RWY 30

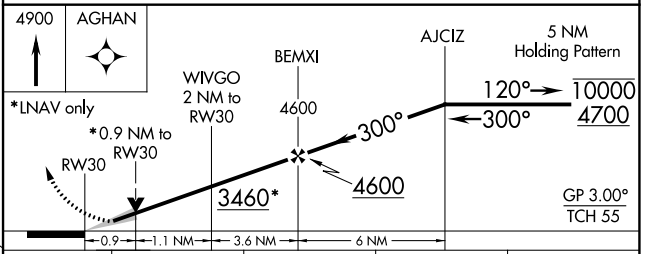
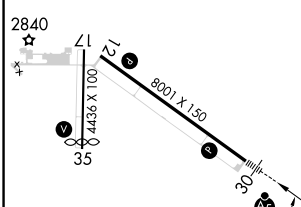
NORTH PLATTE RGNL/LEE BIRD FLD (L.B.F.)

RNP APCH-GPS. ▼ For uncompensated Baro-VNAV systems, LNAV/VNAV NA below -23°C or above 52°C.		MALSR AS	MISSED APPROACH: Climb to 4900 direct AGHAN and hold.
---	--	-------------	---

ASOS <b>118.425</b>	DENVER CENTER <b>132.7 226.675</b>	CLNC DEL <b>132.7</b>	UNICOM <b>123.0 (CTAF)</b>
------------------------	---------------------------------------	--------------------------	-------------------------------



ELEV 2777	<b>D</b>	TDZE 2771
-----------	----------	-----------



CATEGORY	A	B	C	D
LPV DA		2971-½	200 (200-½)	
LNAV/VNAV DA		3022-½	251 (300-½)	
LNAV MDA	3120-½	349 (400-½)	3120-⅝	349 (400-⅝)
<b>C</b> CIRCLING	3280-1 503 (600-1)	3340-1 563 (600-1)	3420-1¾ 643 (700-1¾)	3560-2½ 783 (800-2½)

- HIRL Rwy 12-30
- REIL Rwy 35
- MIRL Rwy 17-35

NC-2, 22 FEB 2024 to 21 MAR 2024

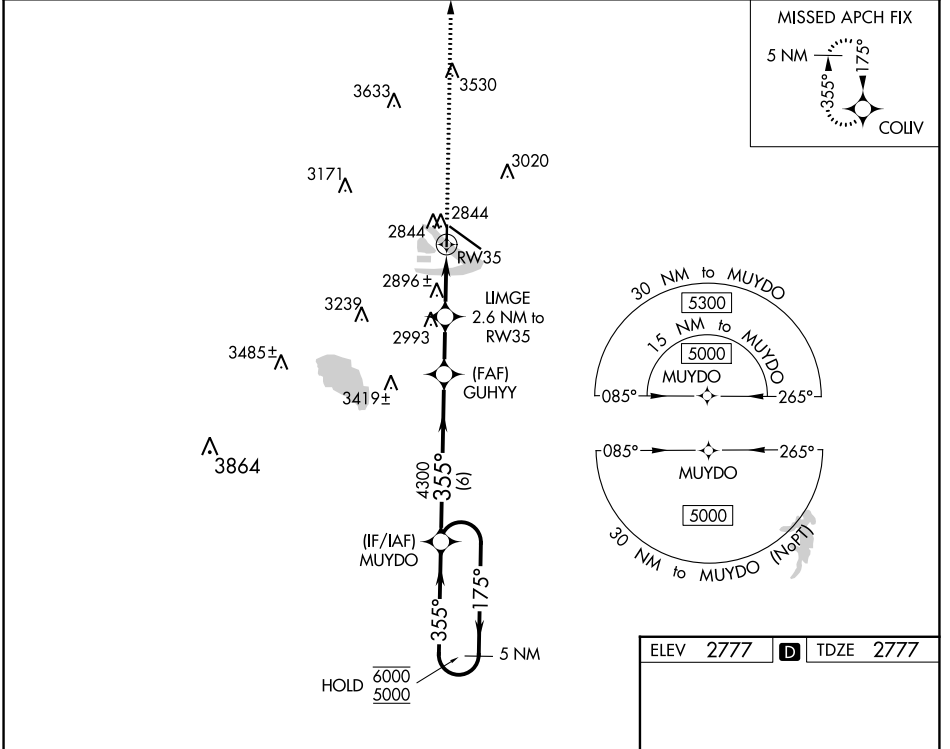
NC-2, 22 FEB 2024 to 21 MAR 2024

WAAS CH <b>56634</b> <b>W35A</b>	APP CRS <b>355°</b>	Rwy Idg TDZE Apt Elev	<b>4135</b> <b>2777</b> <b>2777</b>
--	------------------------	-----------------------------	---

# RNAV (GPS) RWY 35

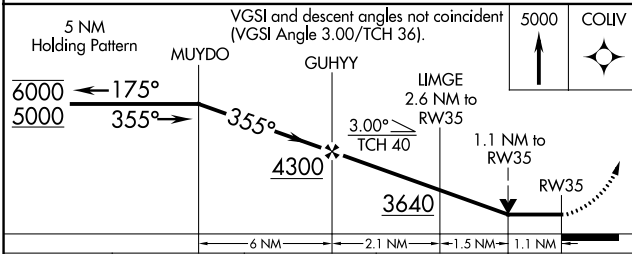
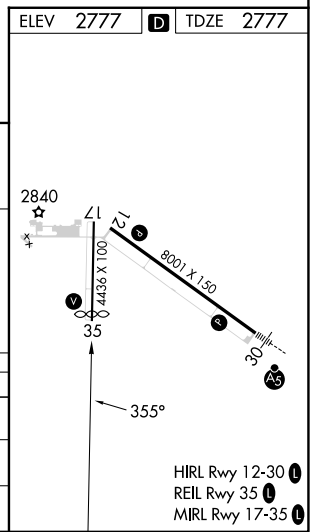
NORTH PLATTE RGNL/LEE BIRD FLD (L.B.F.)

RNP APCH-GPS.		MISSED APPROACH: Climb to 5000 direct COLV and hold.	
		ASOS <b>118.425</b>	DENVER CENTER <b>132.7 226.675</b>
		CLNC DEL <b>132.7</b>	UNICOM <b>123.0 (CTAF) 0</b>



NC-2, 22 FEB 2024 to 21 MAR 2024

NC-2, 22 FEB 2024 to 21 MAR 2024



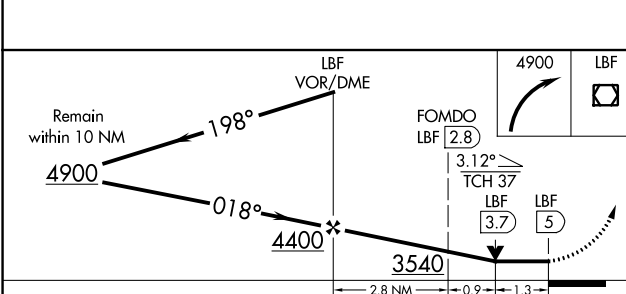
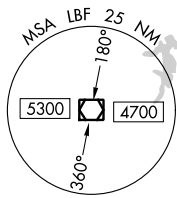
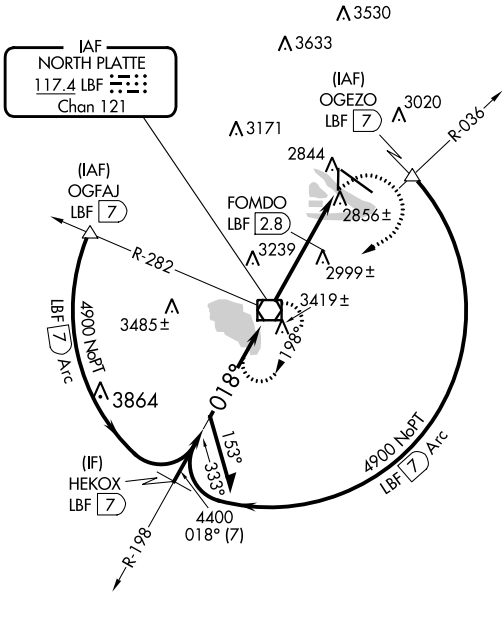
CATEGORY	A	B	C	D
LP MDA	3140-1 363 (400-1)			
LNAV MDA	3160-1	383 (400-1)	3160-1½	383 (400-1½)
<b>C</b> CIRCLING	3280-1 503 (600-1)	3340-1 563 (600-1)	3420-1¾ 643 (700-1¾)	3560-2½ 783 (800-2½)

VOR/DME LBF <b>117.4</b> Chan <b>121</b>	APP CRS <b>018°</b>	Rwy Idg <b>4135</b> TDZE <b>2777</b> Apt Elev <b>2777</b>
--	------------------------	---

# VOR RWY 35

NORTH PLATTE RGNL/LEE BIRD FLD (L.B.F')

<p><b>⚠</b> Rwy 35 helicopter visibility reduction below 3/4 SM NA.</p>		<p><b>MISSED APPROACH:</b> Climbing right turn to 4900 direct LBF VOR/DME and hold, continue climb-in-hold to 4900.</p>	
ASOS <b>118.425</b>	DENVER CENTER <b>132.7 226.675</b>	CLNC DEL <b>132.7</b>	UNICOM <b>123.0 (CTAF) ①</b>



ELEV 2777 **D** TDZE 2777

2840, 4236 x 100, 35, 8001 x 150, 35, 35, 018°

HIRL Rwy 12-30 ①  
 REIL Rwy 35 ①  
 MIRL Rwy 17-35 ①

	Knots	60	90	120	150	180
	Min:Sec	5:00	3:20	2:30	2:00	1:40

FAF to MAP 5 NM

CATEGORY	A	B	C	D
S-35	3540-1 763 (800-1)	3540-1¼ 763 (800-1¼)	3540-2¼ 763 (800-2¼)	3540-2½ 763 (800-2½)
<b>C</b> CIRCLING	3540-1 763 (800-1)	3540-1¼ 763 (800-1¼)	3540-2¼ 763 (800-2¼)	3560-2½ 783 (800-2½)
FOMDO FIX MINIMUMS				
S-35	3220-1	443 (500-1)	3220-1¼ 443 (500-1¼)	3220-1½ 443 (500-1½)
<b>C</b> CIRCLING	3280-1 503 (600-1)	3340-1 563 (600-1)	3420-1¾ 643 (700-1¾)	3560-2½ 783 (800-2½)

NC-2, 22 FEB 2024 to 21 MAR 2024

NC-2, 22 FEB 2024 to 21 MAR 2024