

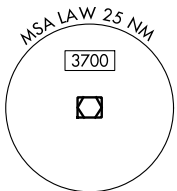
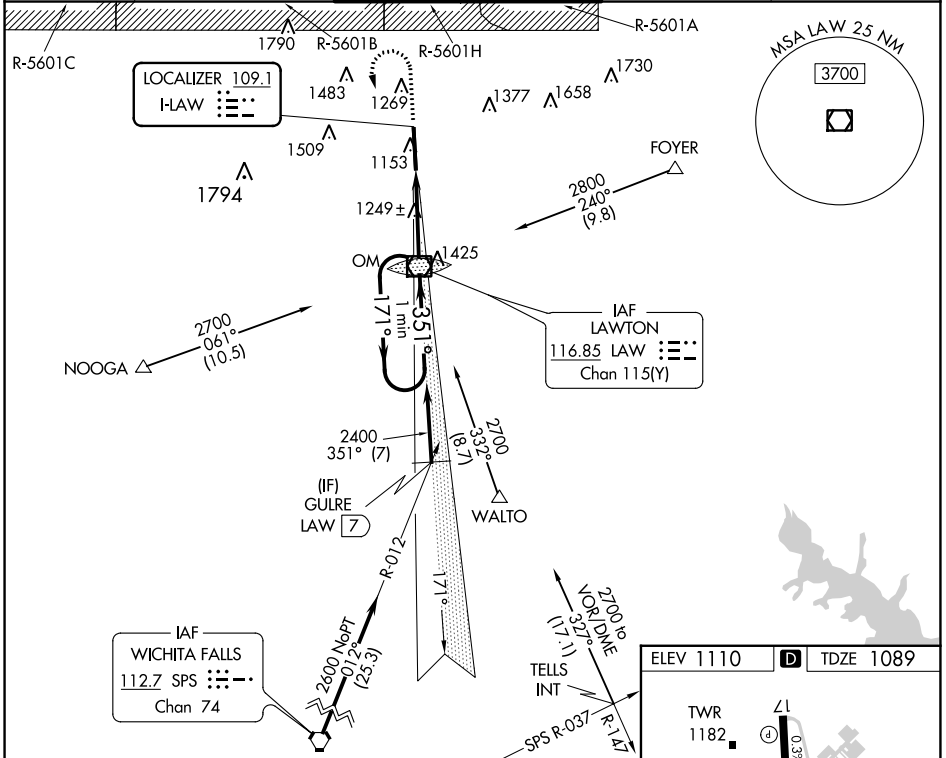
LOC I-LAW 109.1	APP CRS 351°	Rwy Idg TDZE Apt Elev	8599 1089 1110
---------------------------	------------------------	-----------------------------	---

ILS or LOC RWY 35

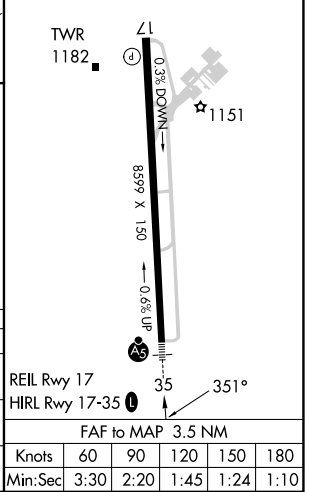
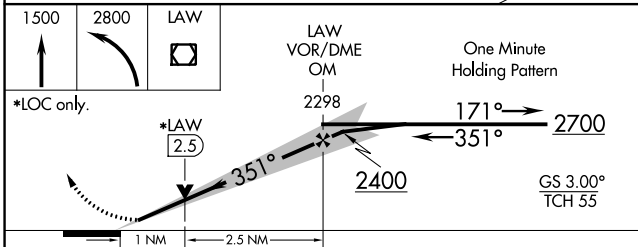
LAWTON-FORT SILL RGNL (LAW)

<p>ASR Autopilot coupled approach NA below 2000. For inop ALS, increase S-LOC 35 Cat C/D visibility to 1½ SM</p>	<p>MALS </p>	<p>MISSED APPROACH: Climb to 1500 then climbing left turn to 2800 direct LAW VOR/DME and hold, continue climb-in-hold to 2800.</p>
---	---------------------	---

ATIS 120.75	FORT SILL APP CON 120.55 322.4	LAWTON TOWER * 119.9(CTAF) 257.8	GND CON 121.9	UNICOM 122.95
-----------------------	--	--	-------------------------	-------------------------



ELEV 1110	D TDZE 1089
-----------	--------------------



CATEGORY	A	B	C	D
S-ILS 35	1289-½		200 (200-½)	
S-LOC 35	1500-½	411 (400-½)	1500-¾	411 (400-¾)
C CIRCLING	1620-1	510 (600-1)	1820-2	1820-2¼
			710 (800-2)	710 (800-2¼)

FAF to MAP 3.5 NM					
Knots	60	90	120	150	180
Min:Sec	3:30	2:20	1:45	1:24	1:10

SC-1, 22 FEB 2024 to 21 MAR 2024

SC-1, 22 FEB 2024 to 21 MAR 2024

WAAS CH 77640 W35A	APP CRS 351°	Rwy Idg TDZE Apt Elev	8599 1089 1110
--	------------------------	-----------------------------	---

RNAV (GPS) RWY 35

LAWTON-FORT SILL RGNL (LAW)

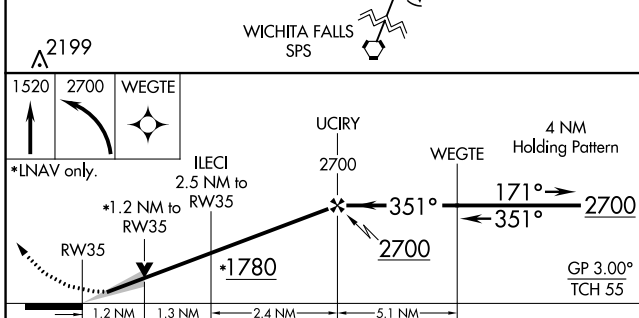
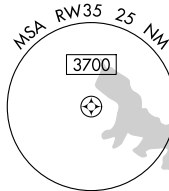
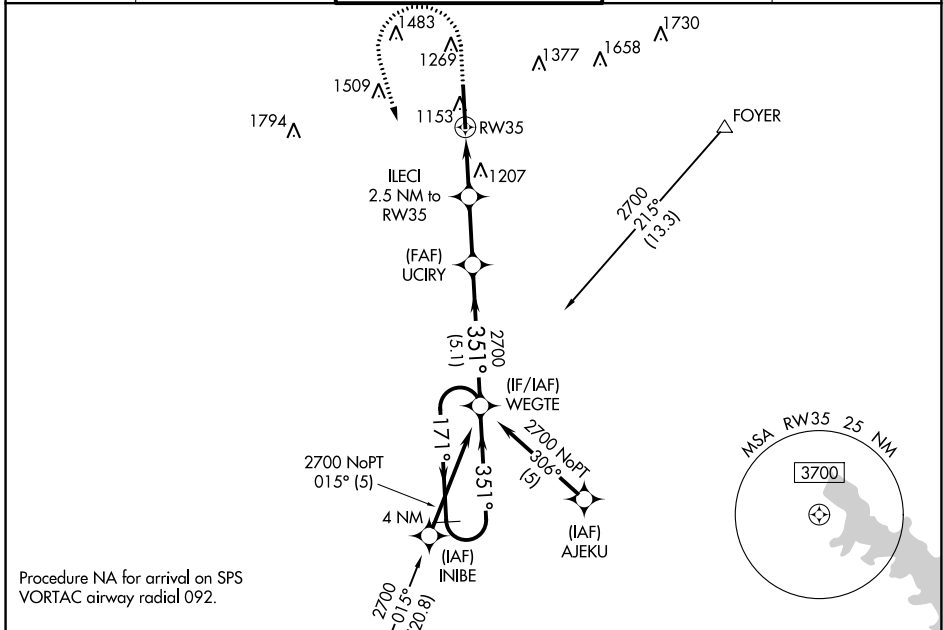
RNP APCH.

▼ For uncompensated Baro-VNAV systems, LNAV/VNAV NA below -11°C or above 54°C. For inop ALS, increase LNAV/VNAV all ASR Cats visibility to 7/6 SM.

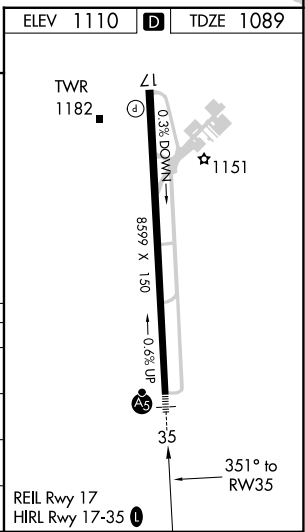
MALSR

MISSED APPROACH: (Do not exceed 200K until WEGTE) Climb to 1520 then climbing left turn to 2700 direct WEGTE and hold.

ATIS 120.75	FORT SILL APP CON 120.55 322.4	LAWTON TOWER * 119.9 (CTAF) 0 257.8	GND CON 121.9	UNICOM 122.95
-----------------------	--	---	-------------------------	-------------------------



CATEGORY	A	B	C	D
LPV DA		1289-1/2	200 (200-1/2)	
LNAV/VNAV DA		1376-1/2	287 (300-1/2)	
LNAV MDA	1520-1/2	431 (500-1/2)	1520-3/4	431 (500-3/4)
CIRCLING	1620-1	510 (600-1)	1820-2 710 (800-2)	1820-2 1/4 710 (800-2 1/4)



SC-1, 22 FEB 2024 to 21 MAR 2024

SC-1, 22 FEB 2024 to 21 MAR 2024

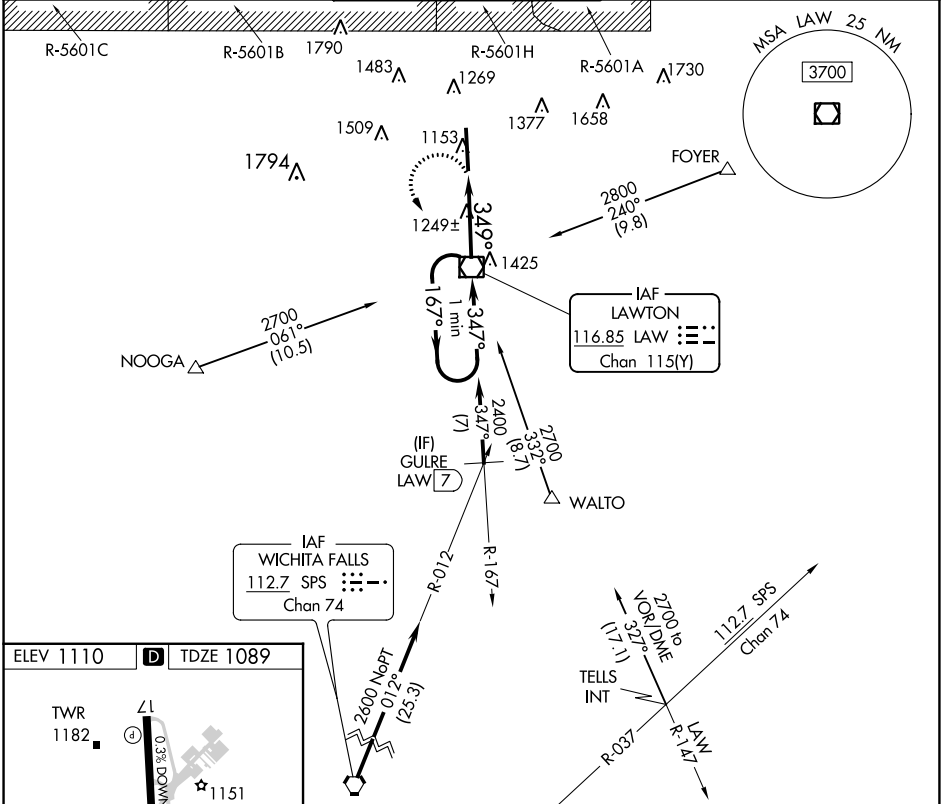
VOR/DME LAW 116.85 Chan 115(Y)	APP CRS 349°	Rwy Idg TDZE Apt Elev	8599 1089 1110
--	------------------------	-----------------------------	---

VOR RWY 35

LAWTON-FORT SILL RGNL (LAW)

For inop ALS, increase Cat C/D visibility to 1½ SM. ASR	MALS	MISSED APPROACH: Climbing left turn to 2800 direct LAW VOR/DME and hold, continue climb-in-hold to 2800.	

ATIS 120.75	FORT SILL APP CON 120.55 322.4	LAWTON TOWER ★ 119.9(CTAF) 257.8	GND CON 121.9	UNICOM 122.95
-----------------------	--	--	-------------------------	-------------------------



ELEV 1110 TDZE 1089

TWR 1182

REIL Rwy 17
HIRL Rwy 17-35

FAF to MAP 3.5 NM

Knots	60	90	120	150	180
Min:Sec	3:30	2:20	1:45	1:24	1:10

2800 LAW

LAW VOR/DME

One Minute Holding Pattern

LAW 2.5

LAW 3.5

167° → 2700

← 347°

2400

3.44° TCH 45

CATEGORY	A	B	C	D
S-35	1500-½ 411 (500-½)		1500-¾ 411 (500-¾)	
CIRCLING	1620-1 510 (600-1)		1820-2 710 (800-2)	1820-2½ 710 (800-2½)

SC-1, 22 FEB 2024 to 21 MAR 2024

SC-1, 22 FEB 2024 to 21 MAR 2024