

(FRNCK1.FRNCK) 22139

FRNCK ONE DEPARTURE (RNAV)

AL-662 (FAA)

HARRY REID INTL (LAS)
LAS VEGAS, NEVADA

D-ATIS

132.4

CLNC DEL

118.0

CPDLC

GND CON

121.1 270.8 E of 1R/19L

121.9 254.3 W of 1R/19L

LAS VEGAS TOWER

118.75 257.8 (Rwys 1L/19R, 1R/19L)

119.9 257.8 (Rwys 8L/26R, 8R/26L)

LAS VEGAS DEP CON

133.95 353.7

**TOP ALTITUDE:
FL190**

FRNCK

021°
(81)

DARDN

026°
(113)

RATPK
13000

028°
(23)

2682

079°

AYVUH
6000

TAKEOFF MINIMUMS

Rwys 8L/R: Standard with minimum climb of 500' per NM to 2682.

NOTE: DME/DME/IRU or GPS required.

NOTE: RNAV 1.

NOTE: RADAR required for non-GPS equipped aircraft.

NOTE: Turbojet only.

NOTE: Chart not to scale.



DEPARTURE ROUTE DESCRIPTION

TAKEOFF RUNWAYS 8L/R: Climb on heading 079° to 2682, then direct to cross AYVUH at or above 6000, thence. . . .

. . . .thence on track 028° to cross RATPK at or above 13000, then on track 026° to DARDN, then on track 021° to FRNCK. Maintain FL190. Expect filed altitude 10 minutes after departure.

FRNCK ONE DEPARTURE (RNAV)

(FRNCK1.FRNCK) 19MAY22

LAS VEGAS, NEVADA
HARRY REID INTL (LAS)

SW-4, 22 FEB 2024 to 21 MAR 2024

SW-4, 22 FEB 2024 to 21 MAR 2024

(GIDGT2.GIDGT) 27JAN22

GIDGT TWO DEPARTURE (RNAV) Departure Routes

LAS VEGAS, NEVADA
HARRY REID INTL (LAS)

D-ATIS
132.4
CLNC DEL
118.0
CPDLC
GND CON
121.1 270.8 E of 1R/19L
121.9 254.3 W of 1R/19L
LAS VEGAS TOWER
118.75 257.8 (Rwys 1L/19R, 1R/19L)
119.9 257.8 (Rwys 8L/26R, 8R/26L)
LAS VEGAS DEP CON
133.95 353.7

**TOP ALTITUDE:
FL190**



DEPARTURE ROUTE DESCRIPTION

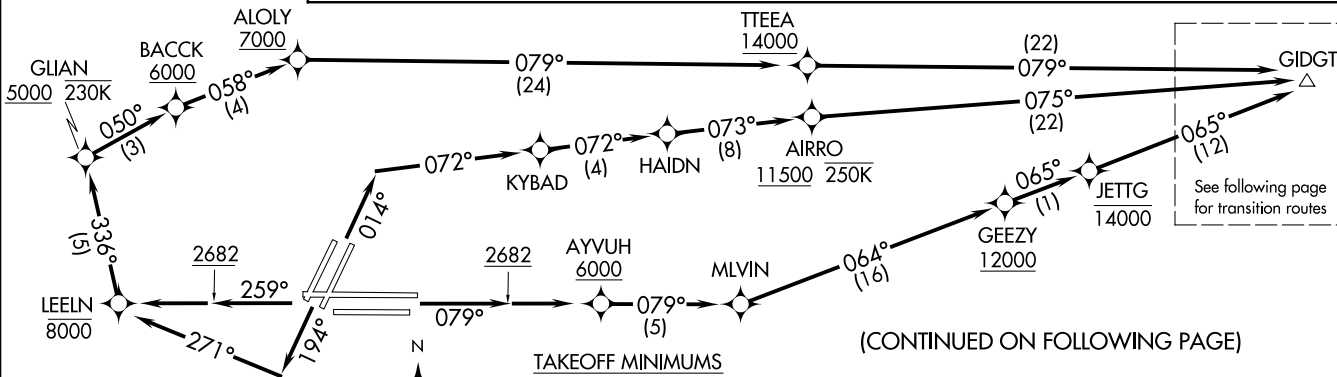
TAKEOFF RUNWAYS 1L/R: Climb on heading 014° to intercept course 072° to KYBAD, then on track 072° to HAIDN, then on track 073° to cross AIRRO at or above 11500 and at or below 250K, then on track 075° to GIDGT, thence. . .

TAKEOFF RUNWAYS 8L/R: Climb on heading 079° to 2682, then direct AYYUH, cross AYYUH at or above 6000, then on track 079° to MLVIN, then on track 064° to cross GEEZY at or above 12000, then on track 065° to cross JETTG at or below 14000, then on track 065° to GIDGT, thence. . .

TAKEOFF RUNWAYS 19L/R: Climb on heading 194° to intercept course 271° to cross LEELN at or below 8000, then on track 336° to cross GLIAN at or above 5000 and at or below 230K, then on track 050° to cross BACCK at or above 6000, then on track 058° to cross ALOLY at or above 7000, then on track 079° to cross TTEEA at or above 14000, then on track 079° to GIDGT, thence. . .

TAKEOFF RUNWAYS 26L/R: Climb on heading 259° to 2682, then direct LEELN to cross LEELN at or below 8000, then on track 336° to cross GLIAN at or above 5000 and at or below 230K, then on track 050° to cross BACCK at or above 6000, then on track 058° to cross ALOLY at or above 7000, then on track 079° to cross TTEEA at or above 14000, then on track 079° to GIDGT, thence. . .

. . . on (transition). Maintain FL190. Expect filed altitude 10 minutes after departure.



NOTE: DME/DME/IRU or GPS required.
NOTE: RNAV 1.
NOTE: RADAR required.
NOTE: Turbojet only.
NOTE: Chart not to scale.

TAKEOFF MINIMUMS

Rwy 1L: Standard with minimum climb of 500' per NM to 2682, then 286' per NM to 4900.
Rwy 1R: Standard with minimum climb of 500' per NM to 2682, then 295' per NM to 4900.
Rwys 8L/R, 19L/R: Standard with minimum climb of 500' per NM to 2682.
Rwy 26L: Standard with minimum climb of 500' per NM to 2682, then 204' per NM to 4100.
Rwy 26R: Standard with minimum climb of 500' per NM to 2682, then 271' per NM to 4100.

(CONTINUED ON FOLLOWING PAGE)

(GIDGT2.GIDGT) 22027

GIDGT TWO DEPARTURE (RNAV) Departure Routes

LAS VEGAS, NEVADA
HARRY REID INTL (LAS)

AL-662 (FAA)

(GIDGT2.GIDGT) 27JAN22

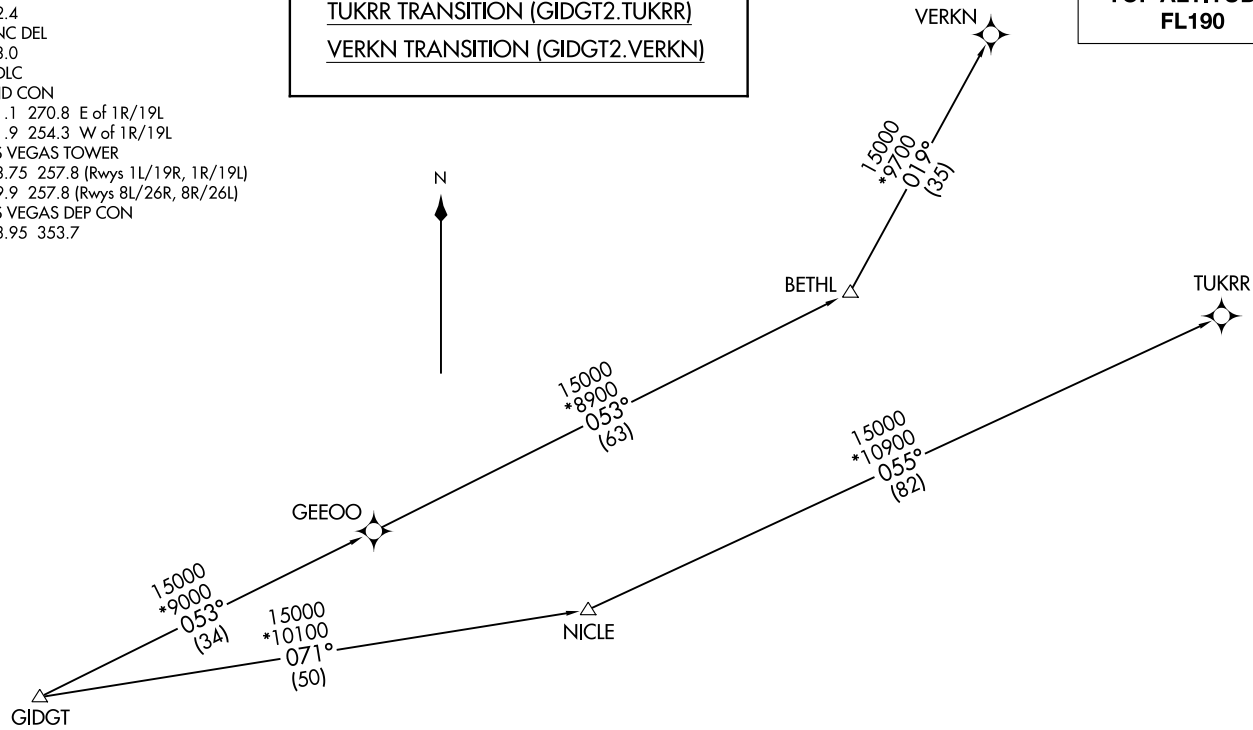
GIDGT TWO DEPARTURE (RNAV) Transition Routes

LAS VEGAS, NEVADA
HARRY REID INTL (LAS)

D-ATIS
132.4
CLNC DEL
118.0
CPDLC
GND CON
121.1 270.8 E of 1R/19L
121.9 254.3 W of 1R/19L
LAS VEGAS TOWER
118.75 257.8 (Rwys 1L/19R, 1R/19L)
119.9 257.8 (Rwys 8L/26R, 8R/26L)
LAS VEGAS DEP CON
133.95 353.7

TUKRR TRANSITION (GIDGT2.TUKRR)
VERKN TRANSITION (GIDGT2.VERKN)

**TOP ALTITUDE:
FL190**



NOTE: DME/DME/IRU or GPS required.
NOTE: RNAV 1.
NOTE: RADAR required.
NOTE: Turbojet only.
NOTE: Chart not to scale.

(GIDGT2.GIDGT) 22027

Al-662 (FAA)
GIDGT TWO DEPARTURE (RNAV) Transition Routes

LAS VEGAS, NEVADA
HARRY REID INTL (LAS)

HOOVER EIGHT DEPARTURE
(HOOVR8.LAS) 08SEP22

(HOOVR8.LAS) 24025
HOOVER EIGHT DEPARTURE

LAS VEGAS DEP CON
125.9 307.25 (Rwys 19L/R, 26L/R)
133.95 353.7 (Rwys 1L/R, 8L/R)
CLNC DEL
118.0
CPDLC
GND CON
121.1 270.8 E of 1R/19L
121.9 254.3 W of 1R/19L
LAS VEGAS TOWER
118.75 257.8 (Rwys 1L/R, 19L/R)
119.9 257.8 (Rwys 8L/R, 26L/R)

**TOP ALTITUDE:
ASSIGNED BY ATC**

RADAR and DME required

DOVE CREEK
114.6 DVC
Chan 93

MILFORD
112.1 MLF
Chan 58

MORMON MESA
113.1 MMM
Chan 78

PAGE
117.6 PGA
Chan 123

LAS VEGAS
116.9 LAS
Chan 116

BOULDER CITY
116.7 BLD
Chan 114

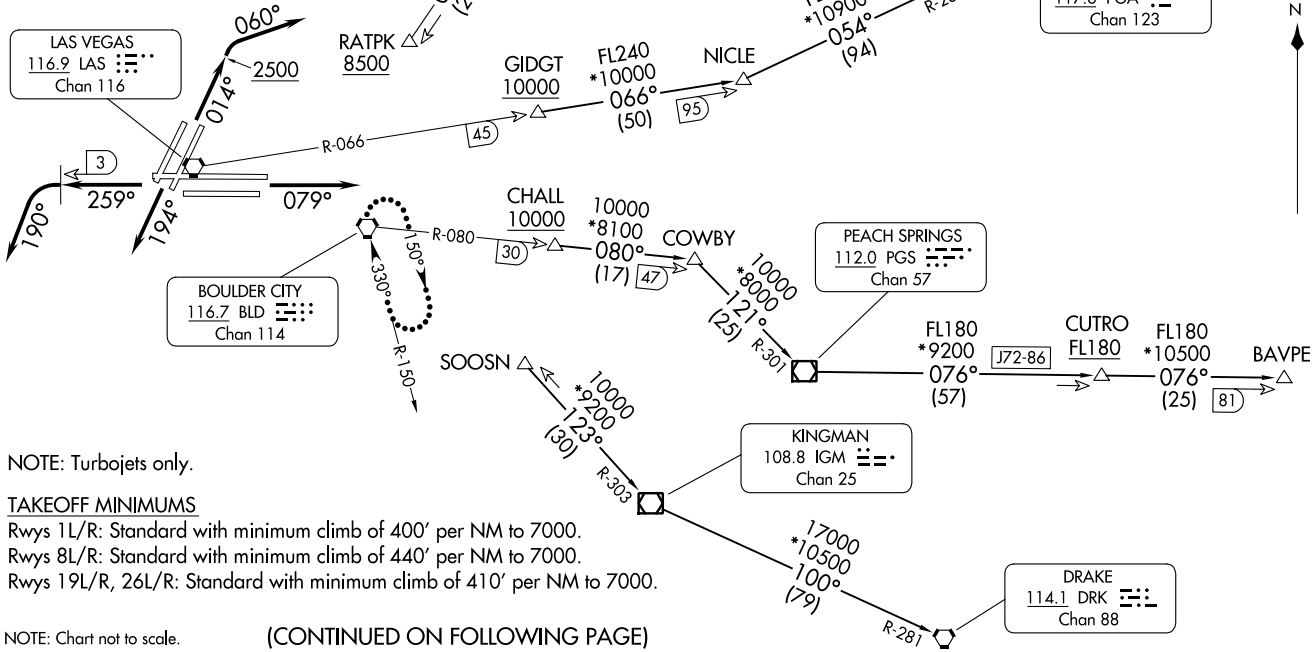
CHALL
10000
*8100
080°
(17)

COWBY
*8000
121°
(25)

PEACH SPRINGS
112.0 PGS
Chan 57

KINGMAN
108.8 IGM
Chan 25

DRAKE
114.1 DRK
Chan 88



NOTE: Turbojets only.

TAKEOFF MINIMUMS

Rwys 1L/R: Standard with minimum climb of 400' per NM to 7000.
Rwys 8L/R: Standard with minimum climb of 440' per NM to 7000.
Rwys 19L/R, 26L/R: Standard with minimum climb of 410' per NM to 7000.

NOTE: Chart not to scale.

(CONTINUED ON FOLLOWING PAGE)

AL-662 (FAA)

HARRY REID INTL (LAS)
LAS VEGAS, NEVADA

LAS VEGAS, NEVADA
HARRY REID INTL (LAS)



DEPARTURE ROUTE DESCRIPTION

TAKEOFF RUNWAYS 1L/R: Climb on heading 014° to 2500, then climbing right turn heading 060°, thence. . . .

TAKEOFF RUNWAYS 8L/R: Climb on heading 079°, thence. . . .

TAKEOFF RUNWAYS 19L/R: Climb on heading 194°, thence. . . .

TAKEOFF RUNWAYS 26L/R: Climb on heading 259° until LAS VORTAC 3 DME, then climbing left turn heading 190°, thence. . . .

. . . .RADAR vectors to transition or assigned route. Maintain ATC assigned altitude, expect clearance to filed altitude two minutes after departure.

LOST COMMUNICATIONS: If no contact with ATC upon reaching 7000, proceed direct BLD VORTAC then climb in BLD VORTAC holding pattern to appropriate MEA for route of flight.

BAVPE TRANSITION (HOOVR8.BAVPE): From over CHALL on BLD R-080 and PGS R-301 to PGS VOR/DME, then on PGS R-076 to BAVPE.

DOVE CREEK TRANSITION (HOOVR8.DVC): From over GIDGT on LAS R-066 and PGA R-234 to PGA VOR/DME, then on PGA R-053 and DVC R-233 to DVC VORTAC.

DRAKE TRANSITION (HOOVR8.DRK): From over SOOSN on IGM R-303 to IGM VOR/DME, then on IGM R-100 and DRK R-281 to DRK VORTAC.

MILFORD TRANSITION (HOOVR8.MLF): From over RATPK on MMM R-199 to MMM VORTAC, then on MMM R-016 and MLF R-197 to MLF VORTAC.

SW-4, 22 FEB 2024 to 21 MAR 2024

SW-4, 22 FEB 2024 to 21 MAR 2024

RNAV 1 - DME/DME/IRU or GPS.
 RADAR required for non-GPS equipped aircraft.

**TOP ALTITUDE:
 FL190**

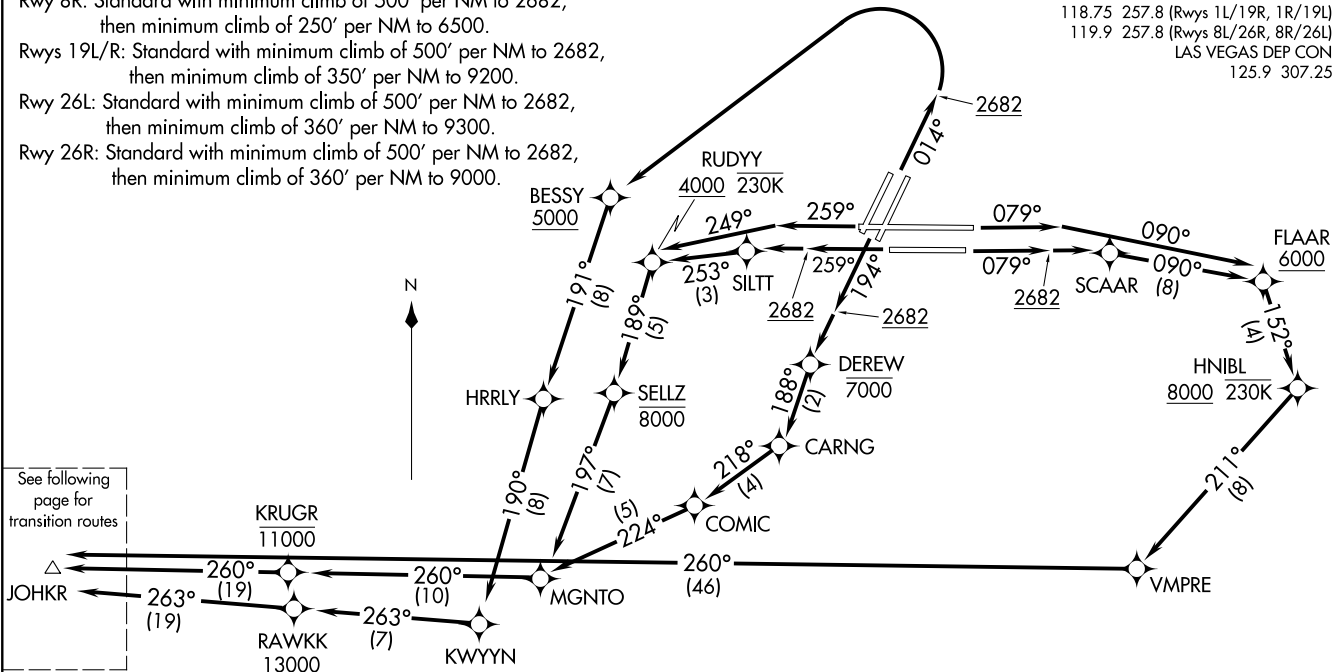
D-ATIS 132.4
 CLNC DEL 118.0
 CPDLC
 GND CON 121.1 270.8 E of 1R/19L
 121.9 254.3 W of 1R/19L
 LAS VEGAS TOWER 118.75 257.8 (Rwys 1L/19R, 1R/19L)
 119.9 257.8 (Rwys 8L/26R, 8R/26L)
 LAS VEGAS DEP CON 125.9 307.25

TAKEOFF MINIMUMS

- Rwy 1L: Standard with minimum climb of 514' per NM to 8700.
- Rwy 1R: Standard with minimum climb of 525' per NM to 8700.
- Rwy 8L: Standard with minimum climb of 500' per NM to 2682, then minimum climb of 360' per NM to 10500.
- Rwy 8R: Standard with minimum climb of 500' per NM to 2682, then minimum climb of 250' per NM to 6500.
- Rwys 19L/R: Standard with minimum climb of 500' per NM to 2682, then minimum climb of 350' per NM to 9200.
- Rwy 26L: Standard with minimum climb of 500' per NM to 2682, then minimum climb of 360' per NM to 9300.
- Rwy 26R: Standard with minimum climb of 500' per NM to 2682, then minimum climb of 360' per NM to 9000.

JOHKR THREE DEPARTURE (RNAV) Departure Routes
 (JOHKR3.JOHKR) 19MAY22
 LAS VEGAS, NEVADA
 HARRY REID INTL (LAS)

JOHKR THREE DEPARTURE (RNAV) Departure Routes
 (JOHKR3.JOHKR) 22139
 AL-662 (FAA)
 HARRY REID INTL (LAS)
 LAS VEGAS, NEVADA



(CONTINUED ON FOLLOWING PAGE)

NOTE: Turbojet aircraft only.

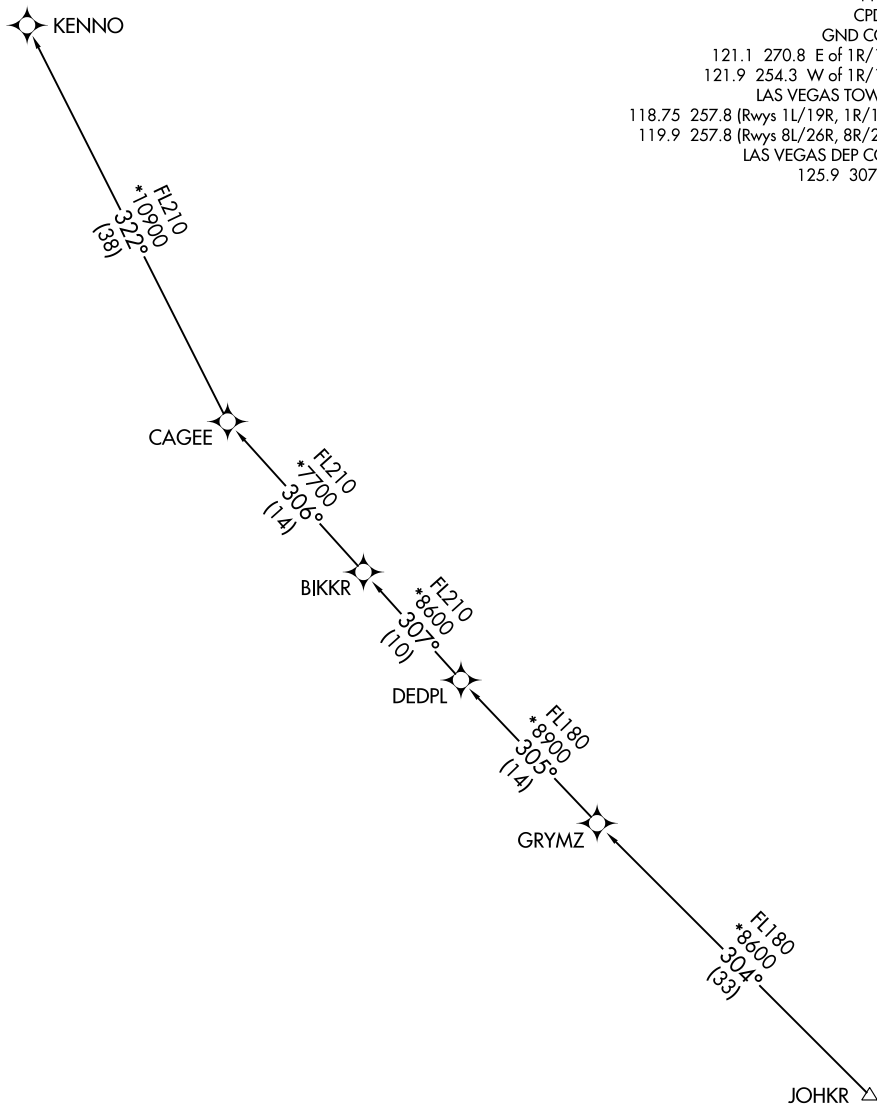
NOTE: Chart not to scale.

JOHKR THREE DEPARTURE (RNAV) Transition Routes

RNAV 1 - DME/DME/IRU or GPS.
RADAR required for non-GPS equipped aircraft.

**TOP ALTITUDE:
FL190**

D-ATIS 132.4
CLNC DEL 118.0
CPDLC
GND CON 121.1 270.8 E of 1R/19L
121.9 254.3 W of 1R/19L
LAS VEGAS TOWER 118.75 257.8 (Rwys 1L/19R, 1R/19L)
119.9 257.8 (Rwys 8L/26R, 8R/26L)
LAS VEGAS DEP CON 125.9 307.25



SW-4, 22 FEB 2024 to 21 MAR 2024

SW-4, 22 FEB 2024 to 21 MAR 2024

(NARRATIVE ON FOLLOWING PAGE)

NOTE: Turbojet aircraft only.

NOTE: Chart not to scale.



DEPARTURE ROUTE DESCRIPTION

TAKEOFF RUNWAYS 1L/R: Climb on heading 014° to 2682, then left turn direct BESSY at or above 5000, then on track 191° to HRRLY, then on track 190° to KWYYN, then on track 263° to cross RAWKK at or above 13000, then on track 263° to JOHKR, thence

TAKEOFF RUNWAY 8L: Climb on heading 079° to intercept course 090° to cross FLAAR at or above 6000, then on track 152° to cross HNIBL at or above 8000 and at or below 230K, then on track 211° to VMPRE, then on track 260° to JOHKR, thence

TAKEOFF RUNWAY 8R: Climb on heading 079° to 2682, then direct SCAAR, then on track 090° to cross FLAAR at or above 6000, then on track 152° to cross HNIBL at or above 8000 and at or below 230K, then on track 211° to VMPRE, then on track 260° to JOHKR, thence

TAKEOFF RUNWAYS 19L/R: Climb on heading 194° to 2682, then direct DEREW at or below 7000, then on track 188° to CARNG, then on track 218° to COMIC , then on track 224° to MGNT0, then on track 260° to cross KRUGR at or below 11000, then on track 260° to JOHKR, thence

TAKEOFF RUNWAY 26L: Climb on heading 259° to 2682, then direct SILTT, then on track 253° to cross RUDYY at or above 4000 and at or below 230K, then on track 189° to cross SELLZ at or below 8000, then on track 197° to MGNT0, then on track 260° to cross KRUGR at or below 11000, then on track 260° to JOHKR, thence

TAKEOFF RUNWAY 26R: Climb on heading 259° to intercept course 249° to cross RUDYY at or above 4000 and at or below 230K, then on track 189° to cross SELLZ at or below 8000, then on track 197° to MGNT0, then on track 260° to cross KRUGR at or below 11000, then on track 260° to JOHKR, thence

. . . . on (transition). Maintain FL190. Expect filed altitude 10 minutes after departure.

KENNO TRANSITION (JOHKR3.KENNO)

SW-4, 22 FEB 2024 to 21 MAR 2024

SW-4, 22 FEB 2024 to 21 MAR 2024

RNAV 1 - DME/DME/IRU or GPS.
 RADAR required for non-GPS equipped aircraft.

**TOP ALTITUDE:
 14000**

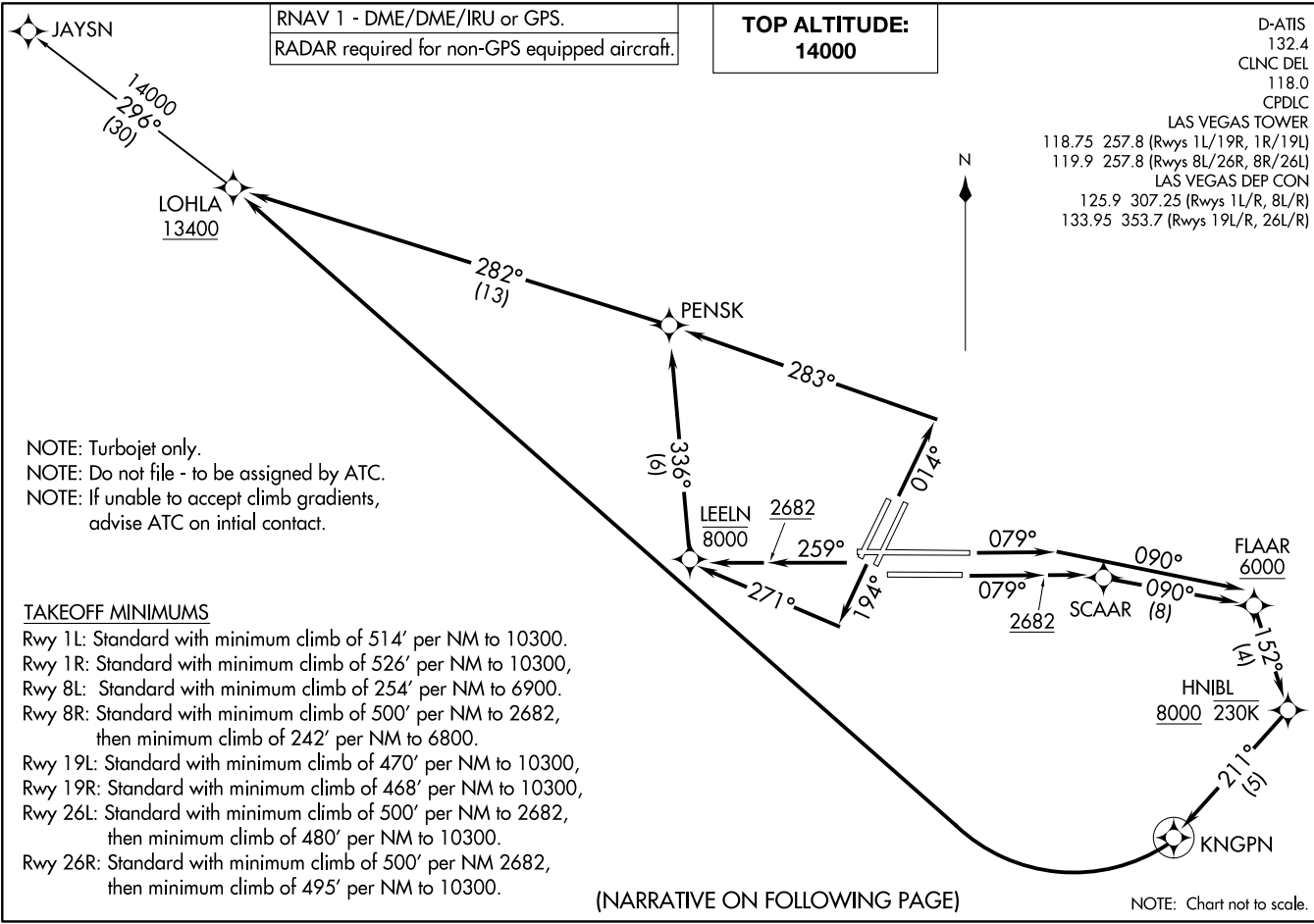
D-ATIS 132.4
 CLNC DEL 118.0
 CPDLC
 LAS VEGAS TOWER 118.75 257.8 (Rwys 1L/19R, 1R/19L)
 119.9 257.8 (Rwys 8L/26R, 8R/26L)
 LAS VEGAS DEP CON 125.9 307.25 (Rwys 1L/R, 8L/R)
 133.95 353.7 (Rwys 19L/R, 26L/R)

LOHLA THREE DEPARTURE (RNAV)
 (LOHLA3.LOHLA) 03NOV22

(LOHLA3.LOHLA) 22307
 LOHLA THREE DEPARTURE (RNAV)
 AL-652 (FAA)

AL-652 (FAA)

HARRY REID INTL (LAS)
 LAS VEGAS, NEVADA



NOTE: Turbojet only.
 NOTE: Do not file - to be assigned by ATC.
 NOTE: If unable to accept climb gradients,
 advise ATC on initial contact.

TAKEOFF MINIMUMS

- Rwy 1L: Standard with minimum climb of 514' per NM to 10300.
- Rwy 1R: Standard with minimum climb of 526' per NM to 10300.
- Rwy 8L: Standard with minimum climb of 254' per NM to 6900.
- Rwy 8R: Standard with minimum climb of 500' per NM to 2682, then minimum climb of 242' per NM to 6800.
- Rwy 19L: Standard with minimum climb of 470' per NM to 10300.
- Rwy 19R: Standard with minimum climb of 468' per NM to 10300.
- Rwy 26L: Standard with minimum climb of 500' per NM to 2682, then minimum climb of 480' per NM to 10300.
- Rwy 26R: Standard with minimum climb of 500' per NM 2682, then minimum climb of 495' per NM to 10300.

(NARRATIVE ON FOLLOWING PAGE)

NOTE: Chart not to scale.

LAS VEGAS, NEVADA
 HARRY REID INTL (LAS)



DEPARTURE ROUTE DESCRIPTION

TAKEOFF RUNWAYS 1L/R: Climb on heading 014° to intercept course 283° to PENSK, then on track 282° to cross LOHLA at or above 13400, thence. . . .

TAKEOFF RUNWAY 8L: Climb on heading 079° to intercept course 090° to cross FLAAR at or above 6000, then on track 152° to cross HNIBL at or above 8000 and at or below 230K, then on track 211° to KNGPN, then right turn direct LOHLA at or above 13400, thence. . . .

TAKEOFF RUNWAY 8R: Climb on heading 079° to 2682, then direct SCAAR, then on track 090° to cross FLAAR at or above 6000, then on track 152° to cross HNIBL at or above 8000 and at or below 230K, then on track 211° to KNGPN, then right turn direct LOHLA at or above 13400, thence. . . .

TAKEOFF RUNWAYS 19L/R: Climb on heading 194° to intercept course 271° to LEELN at or below 8000, then on track 336° to PENSK, then on track 282° to cross LOHLA at or above 13400, thence. . . .

TAKEOFF RUNWAYS 26L/R: Climb on heading 259° to 2682, then direct LEELN at or below 8000, then on track 336° to PENSK, then on track 282° to cross LOHLA at or above 13400, thence. . . .

. . . . on (transition), maintain 14000. Expect filed altitude 10 minutes after departure.

JAYSN TRANSITION (LOHLA3.JAYSN)

SW-4, 22 FEB 2024 to 21 MAR 2024

SW-4, 22 FEB 2024 to 21 MAR 2024

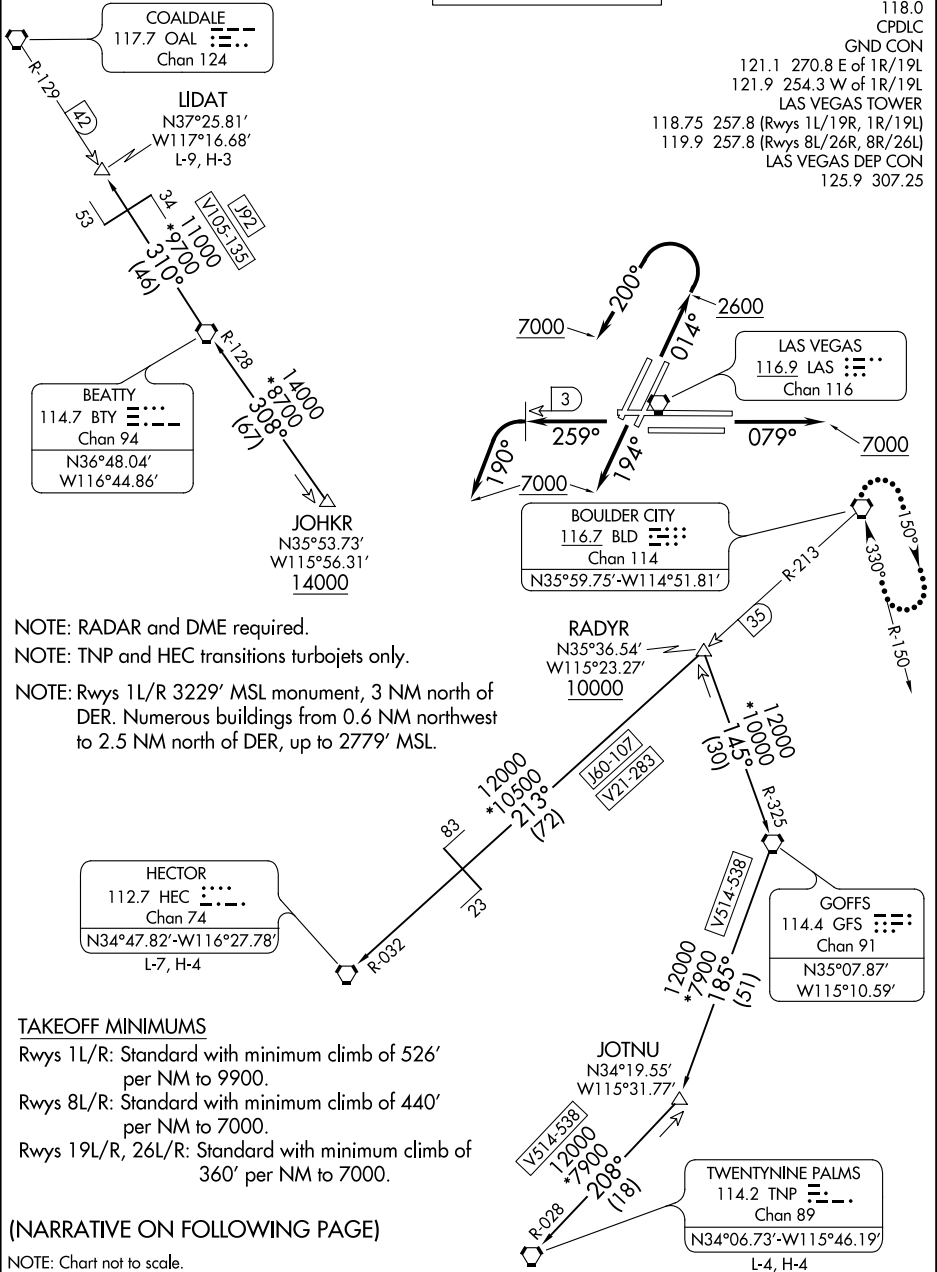
(MCCRN6.LAS) 21168
MCCARRAN SIX DEPARTURE

AL-662 (FAA)

HARRY REID INTL (LAS)
 LAS VEGAS, NEVADA

**TOP ALTITUDE:
 ASSIGNED BY ATC**

D-ATIS
 132.4
 CLNC DEL
 118.0
 CPDLC
 GND CON
 121.1 270.8 E of 1R/19L
 121.9 254.3 W of 1R/19L
 LAS VEGAS TOWER
 119.9 257.8 (Rwys 8L/26R, 8R/26L)
 LAS VEGAS DEP CON
 125.9 307.25



NOTE: RADAR and DME required.
 NOTE: TNP and HEC transitions turbojets only.
 NOTE: Rwys 1L/R 3229' MSL monument, 3 NM north of DER. Numerous buildings from 0.6 NM northwest to 2.5 NM north of DER, up to 2779' MSL.

TAKEOFF MINIMUMS
 Rwys 1L/R: Standard with minimum climb of 526' per NM to 9900.
 Rwys 8L/R: Standard with minimum climb of 440' per NM to 7000.
 Rwys 19L/R, 26L/R: Standard with minimum climb of 360' per NM to 7000.

(NARRATIVE ON FOLLOWING PAGE)

NOTE: Chart not to scale.

MCCARRAN SIX DEPARTURE
 (MCCRN6.LAS) 25FEB21

LAS VEGAS, NEVADA
 HARRY REID INTL (LAS)

SW-4, 22 FEB 2024 to 21 MAR 2024

SW-4, 22 FEB 2024 to 21 MAR 2024



DEPARTURE ROUTE DESCRIPTION

TAKEOFF RUNWAYS 1L/R: Climb on heading 014° to 2600, then climbing left turn heading 200° to 7000, thence. . . .

TAKEOFF RUNWAYS 8L/R: Climb on heading 079° to 7000, thence. . . .

TAKEOFF RUNWAYS 19L/R: Climb on heading 194° to 7000, thence. . . .

TAKEOFF RUNWAYS 26L/R: Climb on heading 259° until LAS VORTAC 3 DME, then climbing left turn heading 190° to 7000, thence. . . .

. . . .for RADAR vectors to transition or assigned route. Maintain 7000. Expect clearance to filed altitude two minutes after departure.

LOST COMMUNICATIONS: If no contact with ATC upon reaching 7000, proceed direct BLD VORTAC then climb in BLD VORTAC holding pattern to the appropriate MEA for route of flight.

HECTOR TRANSITION (MCCRN6.HEC): From over RADYR on BLD R-213 and HEC R-032 to HEC VORTAC.

LIDAT TRANSITION (MCCRN6.LIDAT): From over JOHKR on BTY R-128 to BTY VORTAC, then on BTY R-310 and OAL R-129 to LIDAT.

TWENTY NINE PALMS TRANSITION (MCCRN6.TNP): From over RAYDR on GFS R-325 to GFS VORTAC, then on GFS R-185 and TNP R-028 to TNP VORTAC.

SW-4, 22 FEB 2024 to 21 MAR 2024

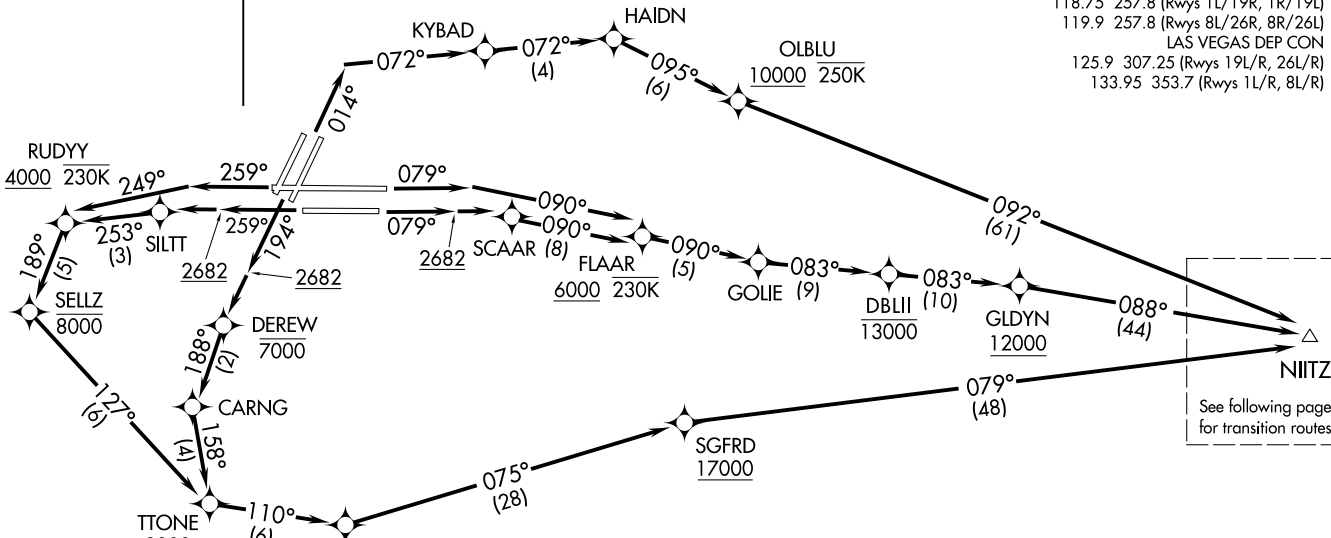
SW-4, 22 FEB 2024 to 21 MAR 2024

NIITZ THREE DEPARTURE (RNAV) (NIITZ3.NIITZ) 27JAN22

**TOP ALTITUDE:
FL190**

NOTE: RADAR required for non-GPS equipped aircraft.
 NOTE: Turbojets only.
 NOTE: DME/DME/IRU or GPS required.
 NOTE: RNAV 1.
 NOTE: If unable to accept climb rates, advise ATC on initial contact.

D-ATIS 132.4
 CLNC DEL 118.0
 CPDLC
 GND CON 121.1 270.8 E of 1R/19L
 121.9 254.3 W of 1R/19L
 LAS VEGAS TOWER
 118.75 257.8 (Rwys 1L/19R, 1R/19L)
 119.9 257.8 (Rwys 8L/26R, 8R/26L)
 LAS VEGAS DEP CON
 125.9 307.25 (Rwys 19L/R, 26L/R)
 133.95 353.7 (Rwys 1L/R, 8L/R)



TAKEOFF MINIMUMS

Rwys 1L/R: Standard with minimum climb of 500' per NM to 2682 then 280' per NM to 4800.
 Rwys 8L/R: Standard with minimum climb of 500' per NM to 2682.
 Rwys 19L/R: Standard with minimum climb of 500' per NM to 2682 then 270' per NM to 6200.
 Rwys 26L/R: Standard with minimum climb of 500' per NM to 2682 then 240' per NM to 5000.

NOTE: Chart not to scale.

(CONTINUED ON FOLLOWING PAGE)

(NIITZ3.NIITZ) 22027

AT-652 (FAA)
 Departure Routes

HARRY REID INTL (LAS)
 LAS VEGAS, NEVADA

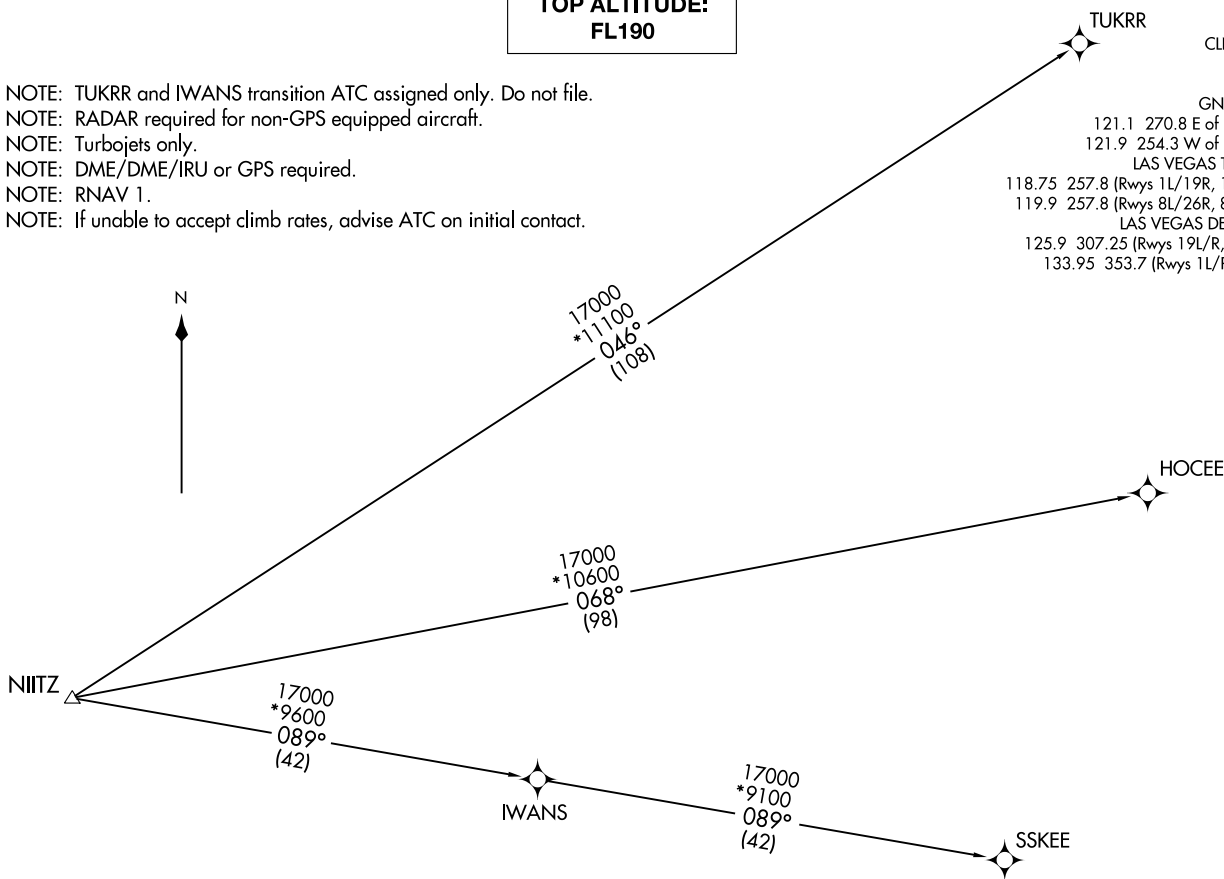
Departure Routes

LAS VEGAS, NEVADA
 HARRY REID INTL (LAS)

**TOP ALTITUDE:
FL190**

- NOTE: TUKRR and IWANS transition ATC assigned only. Do not file.
- NOTE: RADAR required for non-GPS equipped aircraft.
- NOTE: Turbojets only.
- NOTE: DME/DME/IRU or GPS required.
- NOTE: RNAV 1.
- NOTE: If unable to accept climb rates, advise ATC on initial contact.

D-ATIS 132.4
 CLNC DEL 118.0
 CPDLC
 GND CON
 121.1 270.8 E of 1R/19L
 121.9 254.3 W of 1R/19L
 LAS VEGAS TOWER
 118.75 257.8 (Rwys 1L/19R, 1R/19L)
 119.9 257.8 (Rwys 8L/26R, 8R/26L)
 LAS VEGAS DEP CON
 125.9 307.25 (Rwys 19L/R, 26L/R)
 133.95 353.7 (Rwys 1L/R, 8L/R)



NIITZ THREE DEPARTURE (RNAV) Transition Routes
 (NIITZ3.NIITZ) 27JAN22
 LAS VEGAS, NEVADA
 HARRY REID INTL (LAS)

(NIITZ3.NIITZ) 22027
 NIITZ THREE DEPARTURE (RNAV) Transition Routes
 AL-662 (FAA)
 HARRY REID INTL (LAS)
 LAS VEGAS, NEVADA

NOTE: Chart not to scale.

(NARRATIVE ON FOLLOWING PAGE)



DEPARTURE ROUTE DESCRIPTION

TAKEOFF RUNWAYS 1L/R: Climb on heading 014° to intercept course 072° to KYBAD, then on track 072° to HAIDN, then on track 095° to cross OLBLU at or above 10000 and at or below 250K, then on track 092° to NIITZ, thence

TAKEOFF RUNWAY 8L: Climb on heading 079° to intercept course 090° to cross FLAAR at or above 6000 and at or below 230K, then on track 090° to GOLIE, then on track 083° to cross DBLII at or below 13000, then on track 083° to cross GLDYN at or above 12000, then on track 088° to NIITZ, thence

TAKEOFF RUNWAY 8R: Climb on heading 079° to 2682, then direct SCAAR, then on track 090° to cross FLAAR at or above 6000 and at or below 230K, then on track 090° to GOLIE, then on track 083° to cross DBLII at or below 13000, then on track 083° to cross GLDYN at or above 12000, then on track 088° to NIITZ, thence

TAKEOFF RUNWAYS 19L/R: Climb on heading 194° to 2682, then direct DEREW to cross at or below 7000, then on track 188° to CARNG, then on track 158° to cross TTONE at or above 8000, then on track 110° to cross VIVVS at or above 10000, then on track 075° to cross SGFRD at or above 17000, then on track 079° to NIITZ, thence

TAKEOFF RUNWAY 26L: Climb on heading 259° to 2682, then direct SILTT, then on track 253° to cross RUDYY at or above 4000 and at or below 230K, then on track 189° to cross SELLZ at or below 8000, then on track 127° to cross TTONE at or above 8000, then on track 110° to cross VIVVS at or above 10000, then on track 075° to cross SGFRD at or above 17000, then on track 079° to NIITZ, thence

TAKEOFF RUNWAY 26R: Climb on heading 259° to intercept course 249° to cross RUDYY at or above 4000 and at or below 230K, then on track 189° to cross SELLZ at or below 8000, then on track 127° to cross TTONE at or above 8000, then on track 110° to cross VIVVS at or above 10000, then on track 075° to cross SGFRD at or above 17000, then on track 079° to NIITZ, thence

. . . . on (transition), maintain FL190. Expect filed altitude 10 minutes after departure.

HOCEE TRANSITION (NIITZ3.HOCEE)

IWANS TRANSITION (NIITZ3.IWANS)

SSKEE TRANSITION (NIITZ3.SSKEE)

TUKRR TRANSITION (NIITZ3.TUKRR)

SW-4, 22 FEB 2024 to 21 MAR 2024

SW-4, 22 FEB 2024 to 21 MAR 2024

RADYR TWO DEPARTURE (RNAV) Departure Routes

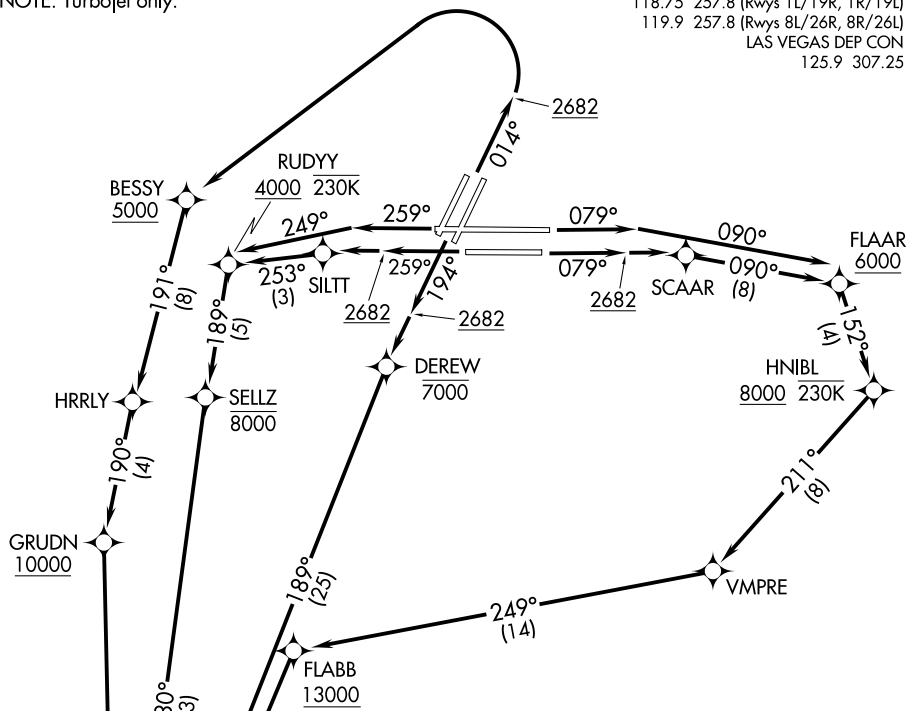
**TOP ALTITUDE:
FL190**

NOTE: DME/DME/IRU or GPS required.
NOTE: RNAV 1.
NOTE: RADAR required for non-GPS equipped aircraft.
NOTE: Turbojet only.

D-ATIS 132.4
CLNC DEL 118.0
CPDLC
GND CON 121.1 270.8 E of 1R/19L
121.9 254.3 W of 1R/19L
LAS VEGAS TOWER 118.75 257.8 (Rwys 1L/19R, 1R/19L)
119.9 257.8 (Rwys 8L/26R, 8R/26L)
LAS VEGAS DEP CON 125.9 307.25

SW-4, 22 FEB 2024 to 21 MAR 2024

SW-4, 22 FEB 2024 to 21 MAR 2024



TAKEOFF MINIMUMS

- Rwy 1L: Standard with minimum climb of 515' per NM to 4500.
- Rwy 1R: Standard with minimum climb of 530' per NM to 4500.
- Rwy 8L: Standard with minimum climb of 500' per NM to 2682, then minimum climb of 220' per NM to 6300.
- Rwy 8R: Standard with minimum climb of 500' per NM to 2682, then minimum climb of 215' per NM to 6300.
- Rwys 19L/R: Standard with minimum climb of 500' per NM to 2682, then minimum climb of 255' per NM to 4400.
- Rwy 26L: Standard with minimum climb of 500' per NM to 2682, then minimum climb of 270' per NM to 6700.
- Rwy 26R: Standard with minimum climb of 500' per NM to 2682, then minimum climb of 275' per NM to 6700.

See following page for transition routes

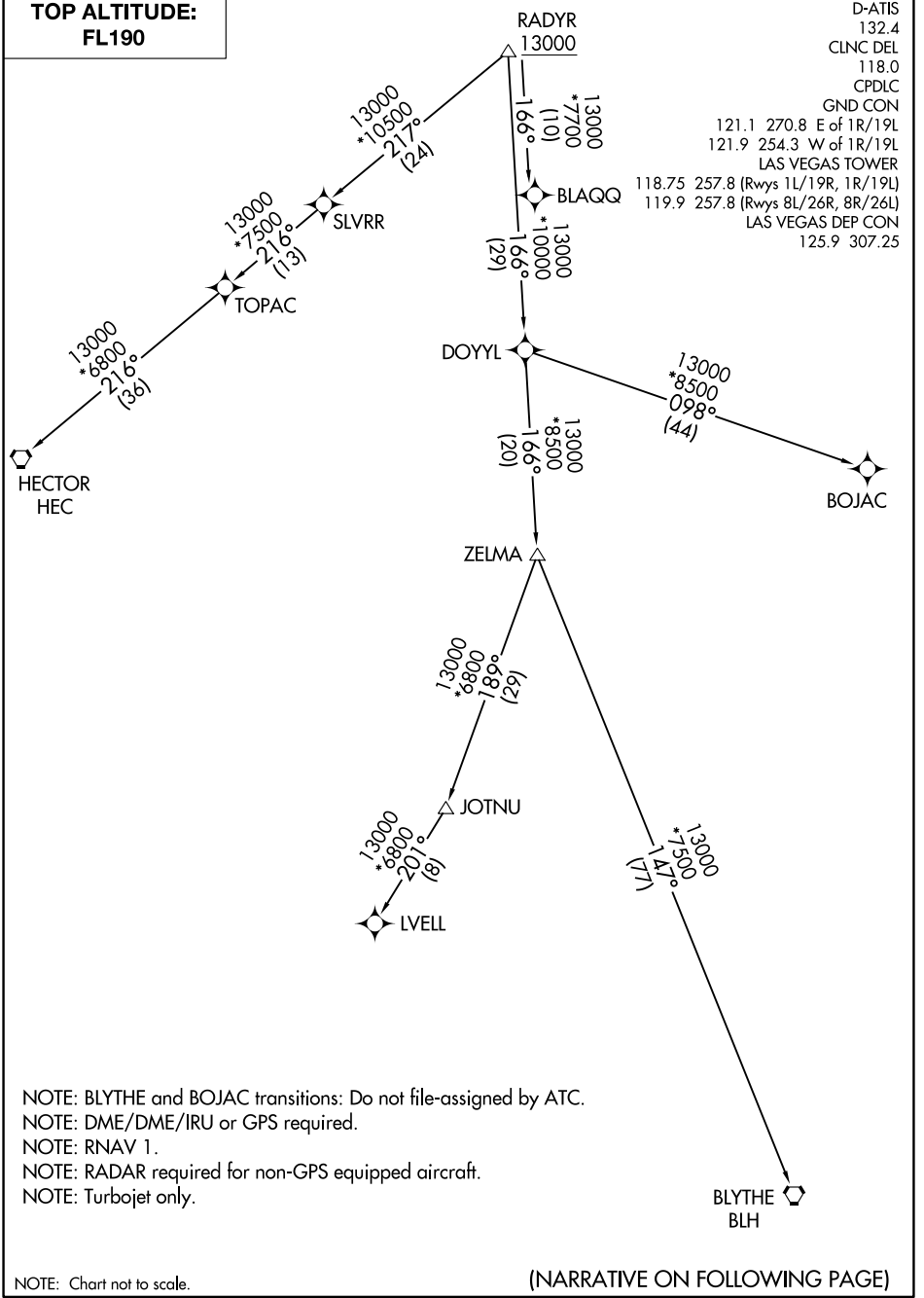
(CONTINUED ON FOLLOWING PAGE)

NOTE: Chart not to scale.

RADYR TWO DEPARTURE (RNAV) Departure Routes

RADYR TWO DEPARTURE (RNAV) Transition Routes

**TOP ALTITUDE:
FL190**



SW-4, 22 FEB 2024 to 21 MAR 2024

SW-4, 22 FEB 2024 to 21 MAR 2024

NOTE: BLYTHE and BOJAC transitions: Do not file-assigned by ATC.
 NOTE: DME/DME/IRU or GPS required.
 NOTE: RNAV 1.
 NOTE: RADAR required for non-GPS equipped aircraft.
 NOTE: Turbojet only.

NOTE: Chart not to scale.

(NARRATIVE ON FOLLOWING PAGE)

RADYR TWO DEPARTURE (RNAV) Transition Routes



DEPARTURE ROUTE DESCRIPTION

TAKEOFF RUNWAYS 1L/R: Climb on heading 014° to 2682, then left turn direct BESSY at or above 5000, then on track 191° to HRRLY, then on track 190° to cross GRUDN at or above 10000, then on track 171° to cross RADYR at or above 13000, thence. . . .

TAKEOFF RUNWAY 8L: Climb on heading 079° to intercept course 090° to cross FLAAR at or above 6000, then on track 152° to cross HNIBL at or above 8000 and at or below 230K, then on track 211° to VMPRE, then on track 249° to cross FLABB at or above 13000, then on track 190° to cross RADYR at or above 13000, thence. . . .

TAKEOFF RUNWAY 8R: Climb on heading 079° to 2682, then direct SCAAR, then on track 090° to cross FLAAR at or above 6000, then on track 152° to cross HNIBL at or above 8000 and at or below 230K, then on track 211° to VMPRE, then on track 249° to cross FLABB at or above 13000, then on track 190° to cross RADYR at or above 13000, thence. . . .

TAKEOFF RUNWAYS 19L/R: Climb on heading 194° to 2682, then direct DEREW at or below 7000, then on track 189° to cross RADYR at or above 13000, thence. . . .

TAKEOFF RUNWAY 26L: Climb on heading 259° to 2682, then direct SILTT, then on track 253° to cross RUDYY at or above 4000 and at or below 230K, then on track 189° to cross SELLZ at or below 8000, then on track 180° to cross RADYR at or above 13000, thence. . . .

TAKEOFF RUNWAY 26R: Climb on heading 259° to intercept course 249° to cross RUDYY at or above 4000 and at or below 230K, then on track 189° to cross SELLZ at or below 8000, then on track 180° to cross RADYR at or above 13000, thence. . . .

. . . . on (transition). Maintain FL190. Expect filed altitude 10 minutes after departure.

BLAQQ TRANSITION (RADYR2.BLAQQ)

BLYTHE TRANSITION (RADYR2.BLH)

BOJAC TRANSITION (RADYR2.BOJAC)

HECTOR TRANSITION (RADYR2.HEC)

LVELL TRANSITION (RADYR2.LVELL)

SLVRR TRANSITION (RADYR2.SLVRR)

SW-4, 22 FEB 2024 to 21 MAR 2024

SW-4, 22 FEB 2024 to 21 MAR 2024

RASLR THREE DEPARTURE (RNAV)
(RASLR3, RASLR) 27JAN22

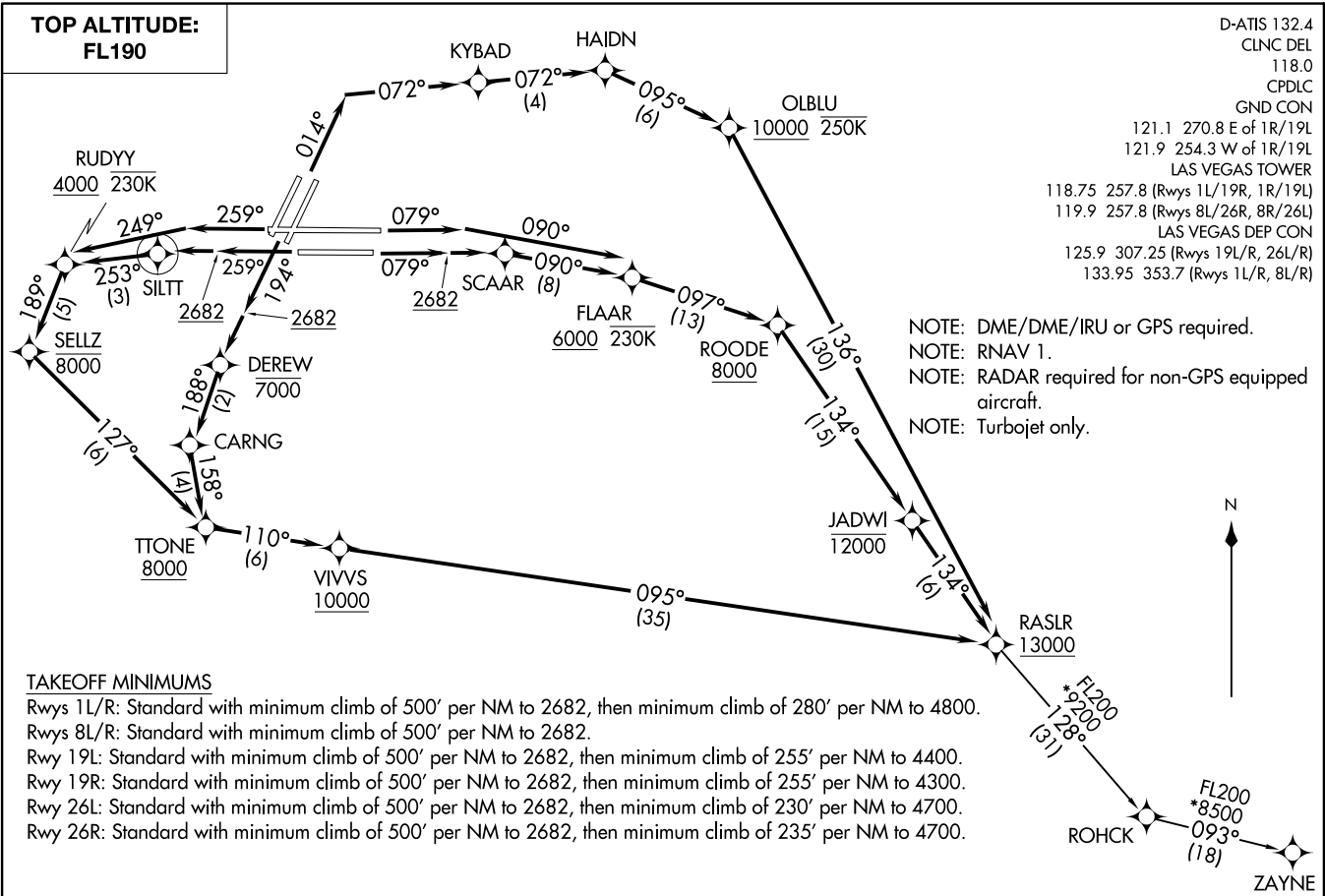
(RASLR3, RASLR) 22022
RASLR THREE DEPARTURE (RNAV)

AL-662 (FAA)

HARRY REID INTL (LAS)
LAS VEGAS, NEVADA

D-ATIS 132.4
CLNC DEL
118.0
CPDLC
GND CON
121.1 270.8 E of 1R/19L
121.9 254.3 W of 1R/19L
LAS VEGAS TOWER
118.75 257.8 (Rwys 1L/19R, 1R/19L)
119.9 257.8 (Rwys 8L/26R, 8R/26L)
LAS VEGAS DEP CON
125.9 307.25 (Rwys 19L/R, 26L/R)
133.95 353.7 (Rwys 1L/R, 8L/R)

**TOP ALTITUDE:
FL190**



NOTE: DME/DME/IRU or GPS required.
NOTE: RNAV 1.
NOTE: RADAR required for non-GPS equipped aircraft.
NOTE: Turbojet only.

TAKEOFF MINIMUMS

Rwys 1L/R: Standard with minimum climb of 500' per NM to 2682, then minimum climb of 280' per NM to 4800.
Rwys 8L/R: Standard with minimum climb of 500' per NM to 2682.
Rwy 19L: Standard with minimum climb of 500' per NM to 2682, then minimum climb of 255' per NM to 4400.
Rwy 19R: Standard with minimum climb of 500' per NM to 2682, then minimum climb of 255' per NM to 4300.
Rwy 26L: Standard with minimum climb of 500' per NM to 2682, then minimum climb of 230' per NM to 4700.
Rwy 26R: Standard with minimum climb of 500' per NM to 2682, then minimum climb of 235' per NM to 4700.

NOTE: Chart not to scale.

(NARRATIVE ON FOLLOWING PAGE)

LAS VEGAS, NEVADA
HARRY REID INTL (LAS)



DEPARTURE ROUTE DESCRIPTION

TAKEOFF RUNWAYS 1L/R: Climb on heading 014° to intercept course 072° to KYBAD, then on track 072° to HAIDN, then on track 095° to cross OLBLU at or above 10000 and at or below 250K, then on track 136° to cross RASLR at or above 13000, thence. . . .

TAKEOFF RUNWAY 8L: Climb on heading 079° to intercept course 090° to cross FLAAR at or above 6000 and at or below 230K, then on track 097° to cross ROODE at or above 8000, then on track 134° to cross JADWI at or below 12000, then on track 134° to cross RASLR at or above 13000, thence. . . .

TAKEOFF RUNWAY 8R: Climb on heading 079° to 2682, then direct SCAAR, then on track 090° to cross FLAAR at or above 6000 and at or below 230K, then on track 097° to cross ROODE at or above 8000, then on track 134° to cross JADWI at or below 12000, then on track 134° to cross RASLR at or above 13000, thence. . . .

TAKEOFF RUNWAYS 19L/R: Climb on heading 194° to 2682, then direct DEREW at or below 7000, then on track 188° to CARNG, then on track 158° to cross TTONE at or above 8000, then on track 110° to cross VIVVS at or above 10000, then on track 095° to cross RASLR at or above 13000, thence. . . .

TAKEOFF RUNWAY 26L: Climb on heading 259° to 2682, then direct SILTT, then on track 253° to cross RUDYY at or above 4000 and at or below 230K, then on track 189° to cross SELZ at or below 8000, then on track 127° to cross TTONE at or above 8000, then on track 110° to cross VIVVS at or above 10000, then on track 095° to cross RASLR at or above 13000, thence. . . .

TAKEOFF RUNWAY 26R: Climb on heading 259° to intercept course 249° to cross RUDYY at or above 4000 and at or below 230K, then on track 189° to cross SELZ at or below 8000, then on track 127° to cross TTONE at or above 8000, then on track 110° to cross VIVVS at or above 10000, then on track 095° to cross RASLR at or above 13000, thence. . . .

. . . . on (transition). Maintain FL190. Expect filed altitude 10 minutes after departure.

ZAYNE TRANSITION (RASLR3.ZAYNE)

SW-4, 22 FEB 2024 to 21 MAR 2024

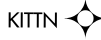
SW-4, 22 FEB 2024 to 21 MAR 2024

RATPK THREE DEPARTURE (RNAV)

AL-662 (FAA)

HARRY REID INTL (LAS)
LAS VEGAS, NEVADA

D-ATIS
132.4
CLNC DEL
118.0
CPDLC
GND CON
121.1 270.8 E of 1R/19L
121.9 254.3 W of 1R/19L
LAS VEGAS TOWER
118.75 257.8 (Rwys 1L/19R, 1R/19L)
119.9 257.8 (Rwys 8L/26R, 8R/26L)
LAS VEGAS DEP CON
125.9 307.25 (Rwys 8L/R)
133.95 353.7 (Rwys 1L/R, 19L/R, 26L/R)



**TOP ALTITUDE:
FL190**

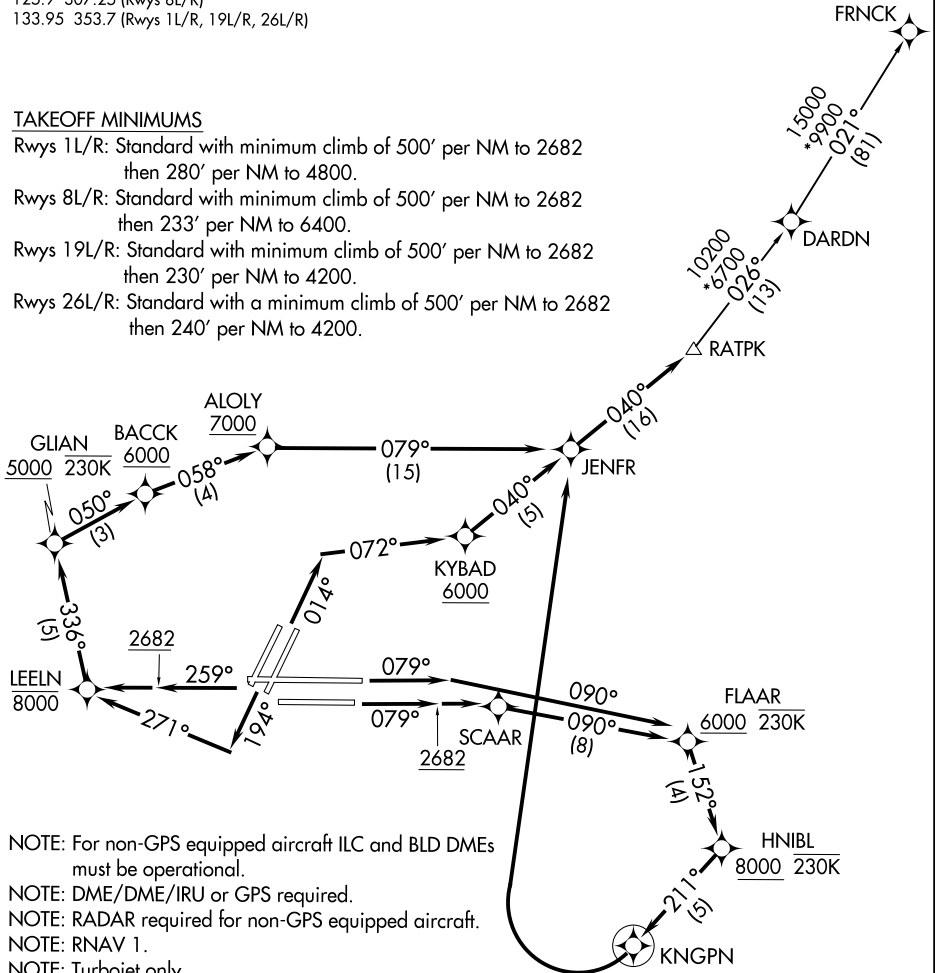
TAKEOFF MINIMUMS

Rwys 1L/R: Standard with minimum climb of 500' per NM to 2682 then 280' per NM to 4800.

Rwys 8L/R: Standard with minimum climb of 500' per NM to 2682 then 233' per NM to 6400.

Rwys 19L/R: Standard with minimum climb of 500' per NM to 2682 then 230' per NM to 4200.

Rwys 26L/R: Standard with a minimum climb of 500' per NM to 2682 then 240' per NM to 4200.



SW-4, 22 FEB 2024 to 21 MAR 2024

SW-4, 22 FEB 2024 to 21 MAR 2024

NOTE: For non-GPS equipped aircraft ILC and BLD DMEs must be operational.
 NOTE: DME/DME/IRU or GPS required.
 NOTE: RADAR required for non-GPS equipped aircraft.
 NOTE: RNAV 1.
 NOTE: Turbojet only.

(NARRATIVE ON FOLLOWING PAGE)

NOTE: Chart not to scale.

RATPK THREE DEPARTURE (RNAV)

LAS VEGAS, NEVADA
HARRY REID INTL (LAS)



DEPARTURE ROUTE DESCRIPTION

TAKEOFF RUNWAYS 1L/R: Climb on heading 014° to intercept course 072° to cross KYBAD at or above 6000, then on track 040° to JENFR, then on track 040° to RATPK, thence

TAKEOFF RUNWAY 8L: Climb on heading 079° to intercept course 090° to cross FLAAR at or above 6000 and at or below 230K, then on track 152° to cross HNIBL at or above 8000 and at or below 230K, then on track 211° to KNGPN, then right turn direct JENFR, then on track 040° to RATPK, thence

TAKEOFF RUNWAY 8R: Climb on heading 079° to 2682, then direct SCAAR, then on track 090° to cross FLAAR at or above 6000 and at or below 230K, then on track 152° to cross HNIBL at or above 8000 and at or below 230K, then on track 211° to KNGPN, then right turn direct JENFR, then on track 040° to RATPK, thence

TAKEOFF RUNWAYS 19L/R: Climb on heading 194° to intercept course 271° to cross LEELN at or below 8000, then on track 336° to cross GLIAN at or above 5000 and at or below 230K, then on track 050° to cross BACCK at or above 6000, then on track 058° to cross ALOLY at or above 7000, then on track 079° to JENFR, then on track 040° to RATPK, thence

TAKEOFF RUNWAYS 26L/R: Climb on heading 259° to 2682, then direct LEELN to cross LEELN at or below 8000, then on track 336° to cross GLIAN at or above 5000 and at or below 230K, then on track 050° to cross BACCK at or above 6000, then on track 058° to cross ALOLY at or above 7000, then on track 079° to JENFR, then on track 040° to RATPK, thence

. . . . on (transition), maintain FL190. Expect filed altitude 10 minutes after departure.

FRNCK TRANSITION (RATPK3.FRNCK)

SW-4, 22 FEB 2024 to 21 MAR 2024

SW-4, 22 FEB 2024 to 21 MAR 2024