

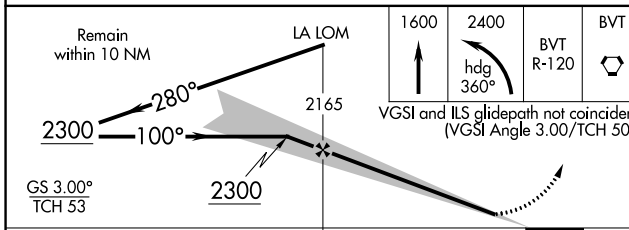
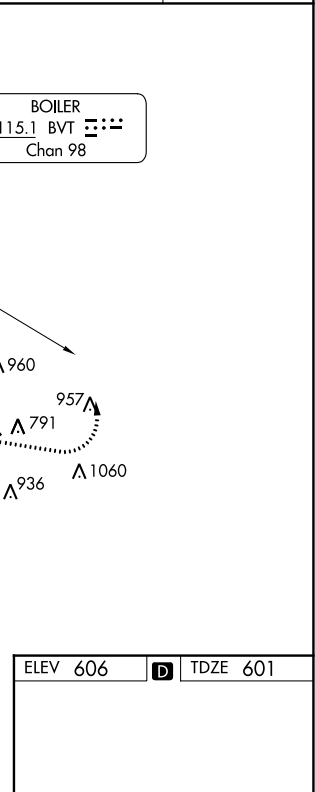
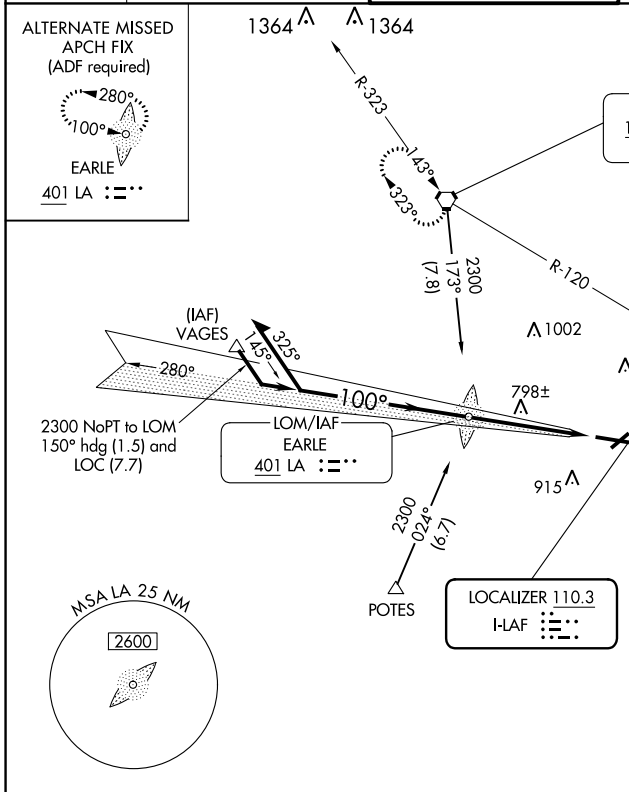
LOC I-LAF 110.3	APP CRS 100°	Rwy Idg TDZE Apt Elev	6600 601 606
---------------------------	------------------------	-----------------------------	---

ILS or LOC RWY 10

PURDUE UNIVERSITY (LAF)

<p>Circling Rwy 23 NA at night.</p>		<p>MALS</p>	<p>MISSED APPROACH: Climb to 1600 then climbing left turn to 2400 on heading 360° and BVT VORTAC R-120 to BVT VORTAC and hold.</p>
-------------------------------------	--	-------------	--

ATIS 127.75	GRISSOM APP CON * 123.85 291.675	LAFAYETTE TOWER * 119.6 (CTAF) 0 343.625	GND CON 121.9 343.625	UNICOM 122.95
-----------------------	--	--	---------------------------------	-------------------------



CATEGORY	A	B	C	D
S-ILS 10	801-½ 200 (200-½)			
S-LOC 10	1060-½ 459 (500-½)	1060-¾ 459 (500-¾)		1060-1 459 (500-1)
CIRCLING	1160-1 554 (600-1)	1320-2 714 (800-2)	1420-2¾ 814 (900-2¾)	

EC-2, 22 FEB 2024 to 21 MAR 2024

EC-2, 22 FEB 2024 to 21 MAR 2024

WAAS Ch 45902 W10A	APP CRS 100°	Rwy Idg TDZE Apt Elev 600 601 606
--	------------------------	---

RNAV (GPS) RWY 10

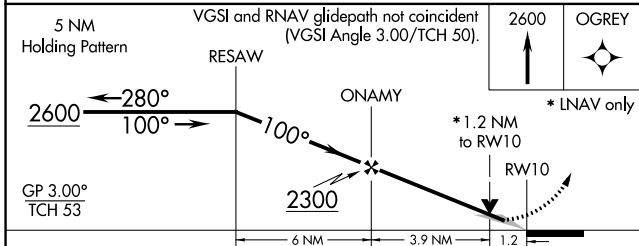
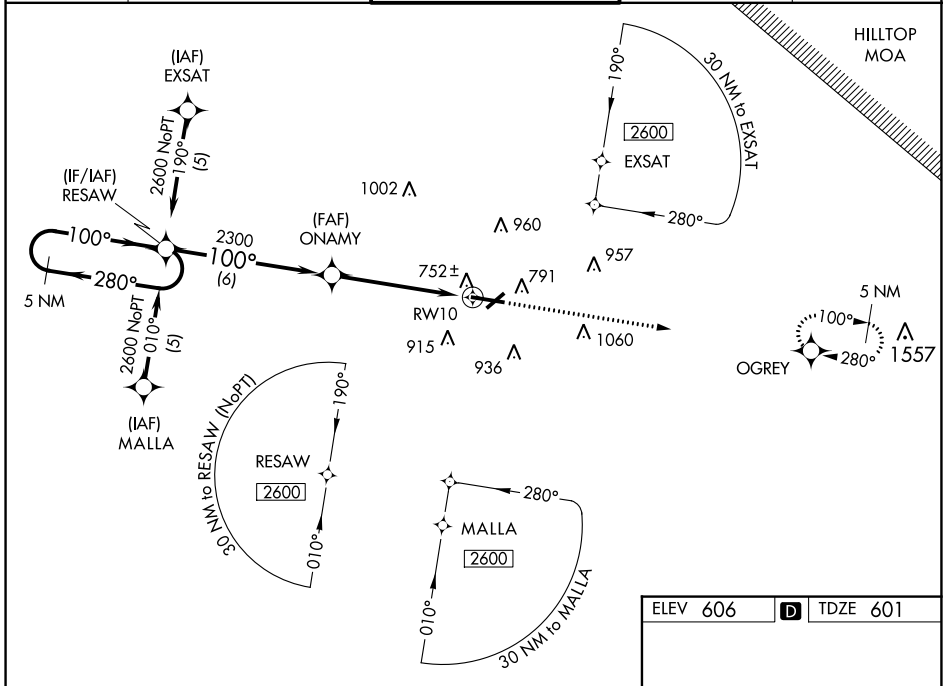
PURDUE UNIVERSITY (LAF)

When local altimeter setting not received, use Vermilion Rgnl altimeter setting and increase LPV DA to 966 feet and visibility all Cats 1/2 SM; increase LNAV/VNAV DA to 1172 feet; increase all MDAs 100 feet and LNAV Cats C/D visibility 1/2 SM, increase Circling Cat C visibility 1/2 SM and Cat D visibility 1/4 SM. Baro-VNAV NA when using Vermilion Rgnl altimeter setting. VDP NA when using Vermilion Rgnl altimeter setting. For uncompensated Baro-VNAV systems, LNAV/VNAV NA below -16°C (4°F) or above 47°C (116°F). For inoperative MALS, increase LPV all Cats visibility to 1 mile. DME/DME RNP-0.3 NA. Circling Rwy 23 NA at night.

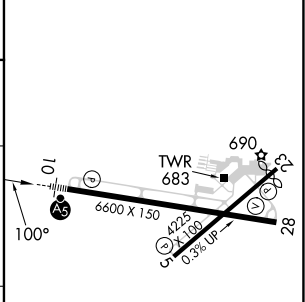
MALS

MISSED APPROACH:
Climb to 2600 direct OGREY and hold.

ATIS 127.75	GRISSOM APP CON* 123.85 291.675	LAFAYETTE TOWER* 119.6 (CTAF) 0 343.625	GND CON 121.9 343.625	UNICOM 122.95
-----------------------	---	---	---------------------------------	-------------------------



ELEV 606	D TDZE 601
----------	-------------------



CATEGORY	A	B	C	D
LPV DA	877-1/2 276 (300-1/2)			
LNAV/VNAV DA	1083-1 1/4 482 (500-1 1/4)			
LNAV MDA	1040-1/2 439 (500-1/2)	1040-3/4 439 (500-3/4)	1040-1 439 (500-1)	1040-1 439 (500-1)
CIRCLING	1160-1 554 (600-1)	1320-2 714 (800-2)	1420-2 3/4 814 (900-2 3/4)	

HIRL Rwy 10-28

REIL Rwy 5, 23 and 28

MIRL Rwy 5-23

EC-2, 22 FEB 2024 to 21 MAR 2024

EC-2, 22 FEB 2024 to 21 MAR 2024

WAAS CH 82103 W28A	APP CRS 280°	Rwy Idg TDZE Apt Elev	6600 598 606
--	------------------------	-----------------------------	---

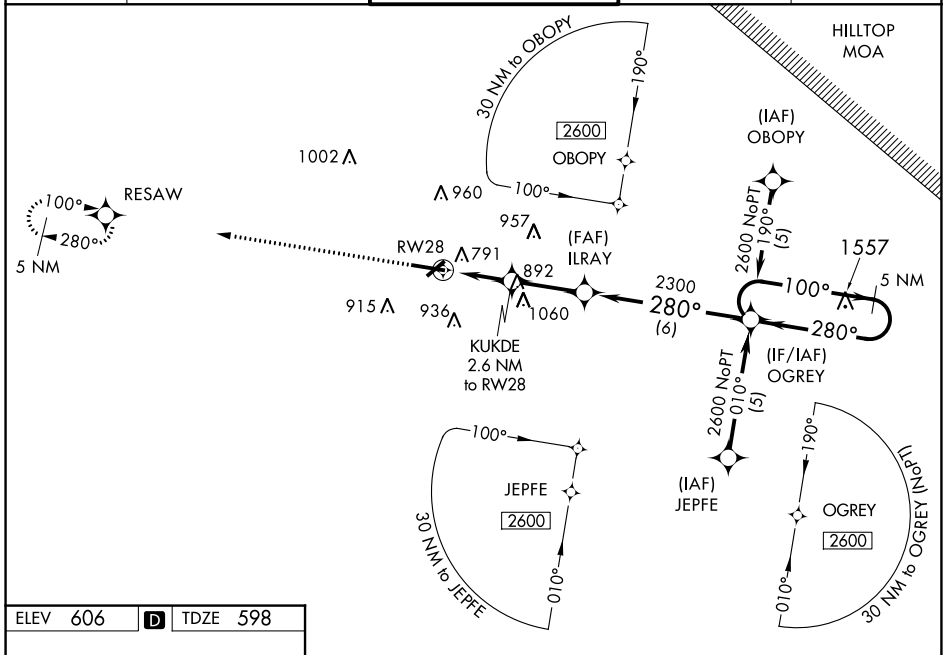
RNAV (GPS) RWY 28

PURDUE UNIVERSITY (LAF)

When local altimeter setting not received, use Vermilion Rgnl altimeter setting: increase LPV DA to 945 feet; increase LNAV/VNAV DA to 1214 feet; increase all MDAs 100 feet and LNAV Cats C/D visibility 1/4 SM and Circling Cat C visibility 1/2 SM, Cat D visibility 1/4 SM. Baro-VNAV NA when using Vermilion Rgnl altimeter setting. For uncompensated Baro-VNAV systems, LNAV/VNAV NA below -1.6°C (4°F) or above 47°C (116°F). DME/DME RNP-0.3 NA. Rwy 28 helicopter visibility reduction below 3/4 SM NA. Circling Rwy 23 NA at night.

MISSED APPROACH: Climb to 2600 direct RESAW and hold.

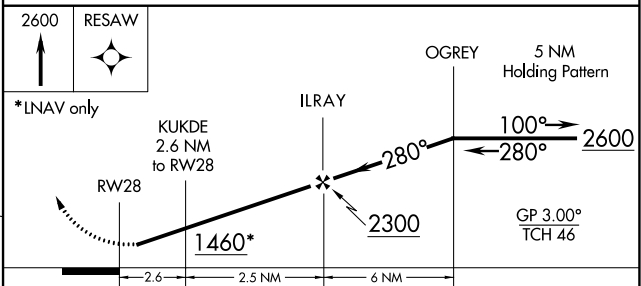
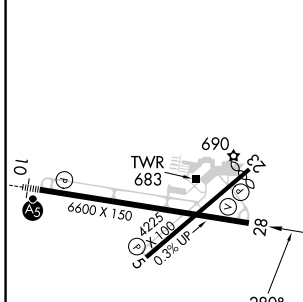
ATIS 127.75	GRISSOM APP CON * 123.85 291.675	LAFAYETTE TOWER * 119.6 (CTAF) 343.625	GND CON 121.9 343.625	UNICOM 122.95
-----------------------	--	--	---------------------------------	-------------------------



EC-2, 22 FEB 2024 to 21 MAR 2024

EC-2, 22 FEB 2024 to 21 MAR 2024

ELEV 606	D	TDZE 598
----------	----------	----------



CATEGORY	A	B	C	D
LPV DA		856-1	258 (300-1)	
LNAV/VNAV DA		1125-1 3/4 527 (600-1 3/4)		
LNAV MDA	1060-1	462 (500-1)	1060-1 3/8	462 (500-1 3/8)
CIRCLING	1160-1 554 (600-1)		1320-2	1420-2 3/4 814 (900-2 3/4)

HIRL Rwy 10-28
REIL Rwys 5, 23 and 28
MIRL Rwy 5-23

VORTAC BVT 115.1 Chan 98	APP CRS 143°	Rwy Idg TDZE Apt Elev N/A N/A 606
--	------------------------	---

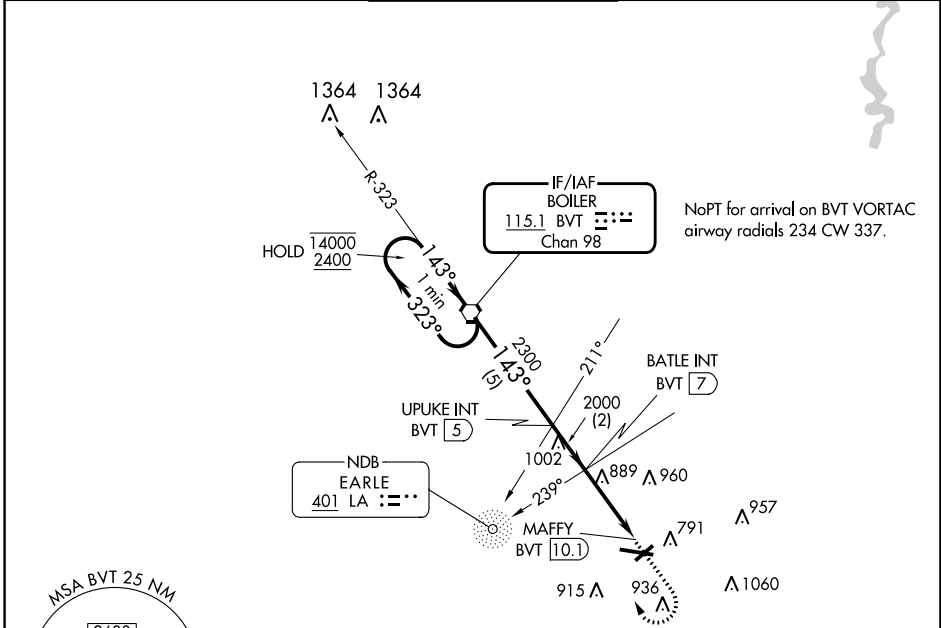
VOR-A
PURDUE UNIVERSITY (LAF)

ADF or DME required.

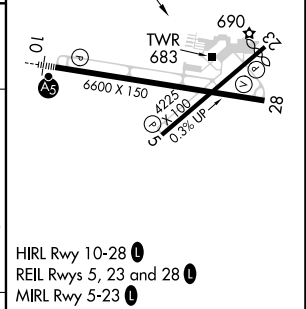
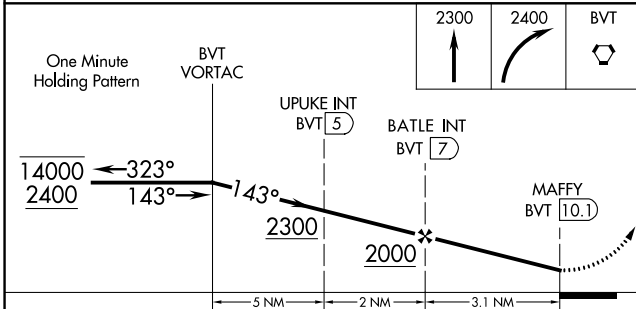
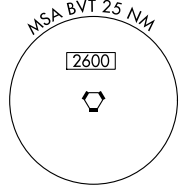
⚠ Circling Rwy 23 NA at night.
⚠ When local altimeter setting not received, use Vermilion Rgnl altimeter setting and increase all MDAs 100 feet and Cat C and D visibility 1/2 SM.

MISSED APPROACH: Climb to 2300 then climbing right turn to 2400 direct BVT VORTAC and hold.

ATIS 127.75	GRISSOM APP CON ★ 123.85 291.675	LAFAYETTE TOWER ★ 119.6 (CTAF) 343.625	GND CON 121.9 343.625	UNICOM 122.95
-----------------------	--	--	---------------------------------	-------------------------



NoPT for arrival on BVT VORTAC airway radials 234 CW 337.



CATEGORY	A	B	C	D	FAF to MAP 3.1 NM					
CIRCLING	1160-1 554 (600-1)		1320-2 714 (800-2)	1420-2 3/4 814 (900-2 3/4)	Knots	60	90	120	150	180
					Min:Sec	3:06	2:04	1:33	1:14	1:02