


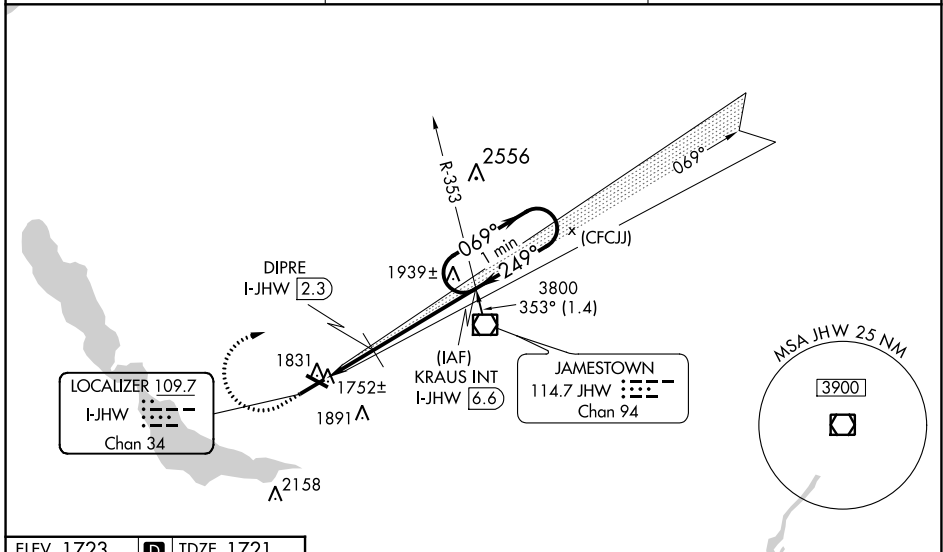
LOC/DME I-JHW <b>109.7</b> Chan <b>34</b>	APP CRS <b>249°</b>	Rwy Idg TDZE <b>1721</b> Apt Elev <b>1723</b>
---	------------------------	---

**ILS or LOC RWY 25**  
CHAUTAUQUA COUNTY/JAMESTOWN (JHW)

▼ Circling to Rwy 13/31 NA at night. Autopilot coupled approach NA below 2420. VDP NA with Dunkirk altimeter setting. Cat D SI NA when using Dunkirk altimeter.   
 ▲ NA When local altimeter setting not received, use Dunkirk altimeter setting and increase S-ILS 25 DA to 2161 and all MDA 200 feet; increase S-ILS 25 all Cats visibility 3/4 mile; increase S-LOC 25 Cats A and B visibility to 3/4, Circling Cats A and B 1 1/4, increase S-LOC 25 Cats C and D visibility to 2, Circling Cats C visibility 2 3/4 and D visibility 3, DIPRE fix minimums increase S-LOC 25 Cats C and D visibility 1 1/8, and Circling Cats C visibility 2 and Cat D visibility 2 3/4 mile. For inoperative MALSR when using Dunkirk altimeter setting, increase S-ILS 25 all Cats visibility 1 1/8 mile. VDP NA when using Dunkirk altimeter setting.

MALSR  MISSED APPROACH: Climb to 2420 then climbing right turn to 3800 on heading 125° and I-JHW LOC course NE to KRAUS INT/ I-JHW 6.6 DME and hold.

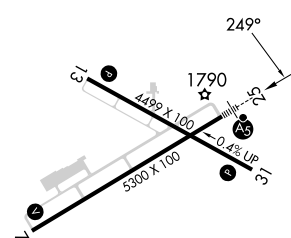


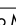
AWOS-3PT <b>118.425</b>	BUFFALO APP CON * <b>126.05</b>	UNICOM <b>122.975 (CTAF) 0</b>
----------------------------	------------------------------------	-----------------------------------



NE-2, 22 FEB 2024 to 21 MAR 2024

NE-2, 22 FEB 2024 to 21 MAR 2024

ELEV 1723	<b>D</b>	TDZE 1721
-----------	----------	-----------

	2420	3800	LOC crs NE	KRAUS INT	KRAUS INT I-JHW 6.6	One Minute Holding Pattern
	↑	hdg 125°				
	I-JHW 0.2	*I-JHW 1.1	DIPRE I-JHW 2.3			
	*LOC only.					
	1 NM	1.1 NM	4.3 NM			
	A	B	C	D		
S-ILS 25	1971-1/2		250 (300-1/2)			
S-LOC 25	2420-1/2	699 (700-1/2)	2420-1 1/2 699 (700-1 1/2)			
<b>C</b> CIRCLING	2420-1	697 (700-1)	2420-2 697 (700-2)	2420-2 1/4 697 (700-2 1/4)		
DIPRE FIX MINIMUMS (DME REQUIRED)						
S-LOC 25	2080-1/2	359 (400-1/2)	2080-5/8	359 (400-5/8)		
<b>C</b> CIRCLING	2200-1	477 (500-1)	2260-1 1/2 537 (600-1 1/2)	2340-2 617 (700-2)		
REIL Rwy 31  MIRL Rwy 13-31  HIRL Rwy 7-25  FAF to MAP 6.4 NM Knots: 60 90 120 150 180 Min:Sec: 6:23 4:15 3:11 2:33 2:08						

APP CRS	Rwy Idg	<b>4499</b>
<b>129°</b>	TDZE	<b>1723</b>
	Apt Elev	<b>1723</b>

# RNAV (GPS) RWY 13

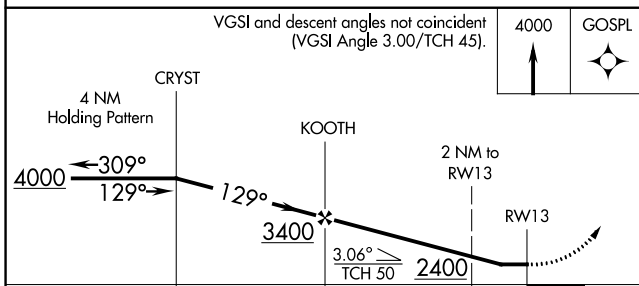
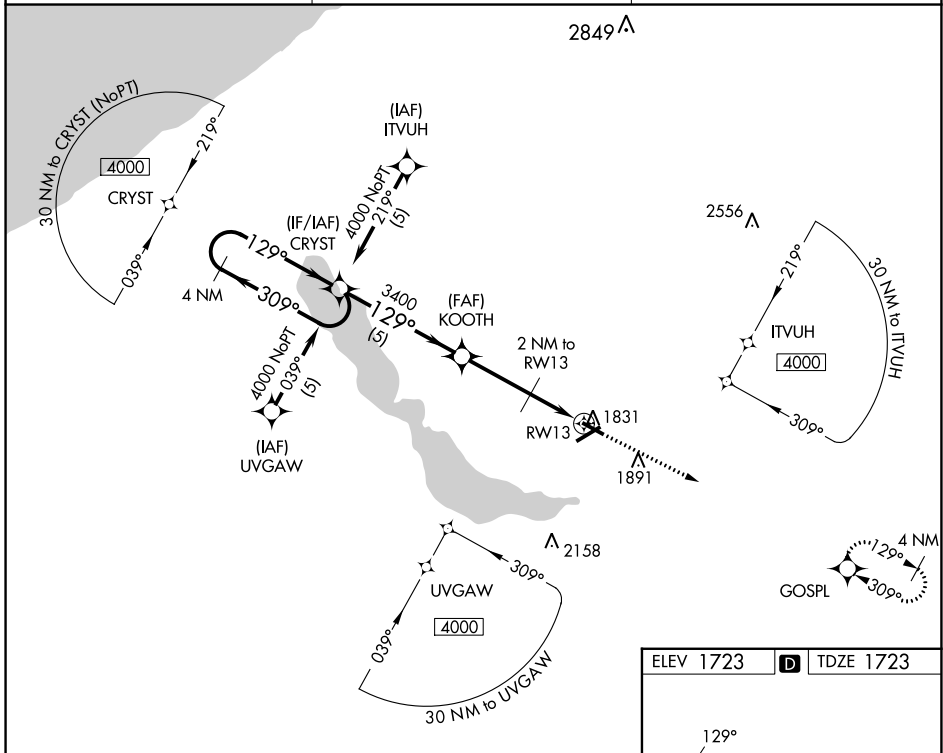
CHAUTAUQUA COUNTY/JAMESTOWN (JHW)

RNP APCH-GPS.

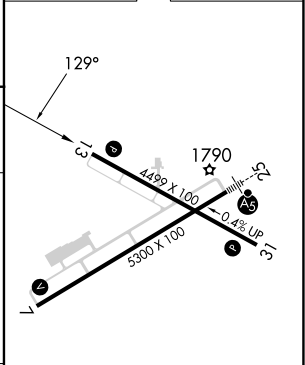
**▼** Rwy 13 Straight-in/Circling and Circling to Rwy 31 NA at night. When local altimeter setting not received, use Dunkirk altimeter setting: increase all MDAs 200 feet and visibility LNAV Cat C/D and Circling Cat C ½ SM and Circling Cat D ¾ SM. Helicopter visibility reduction below 1 SM NA.

**▲** NA MISSED APPROACH: Climb to 4000 direct GOSPL WP and hold.

AWOS-3PT	BUFFALO APP CON *	UNICOM
<b>118.425</b>	<b>126.05</b>	<b>122.975</b> (CTAF) <b>Ⓛ</b>



ELEV 1723	<b>D</b>	TDZE 1723
-----------	----------	-----------



CATEGORY	A	B	C	D
LNAV MDA	2140-1	417 (500-1)	2140-1¼	417 (500-1¼)
<b>C</b> CIRCLING	2200-1	477 (500-1)	2260-1½	2340-2
			537 (600-1½)	617 (700-2)

REIL Rwy 31 **Ⓛ**  
 MIRL Rwy 13-31 **Ⓛ**  
 HIRL Rwy 7-25 **Ⓛ**

NE-2, 22 FEB 2024 to 21 MAR 2024

NE-2, 22 FEB 2024 to 21 MAR 2024

WAAS CH <b>62910</b> <b>W25A</b>	APP CRS <b>249°</b>	Rwy Idg TDZE Apt Elev	<b>5300</b> <b>1721</b> <b>1723</b>
--	------------------------	-----------------------------	---

# RNAV (GPS) RWY 25

CHAUTAUQUA COUNTY/JAMESTOWN (JHW)

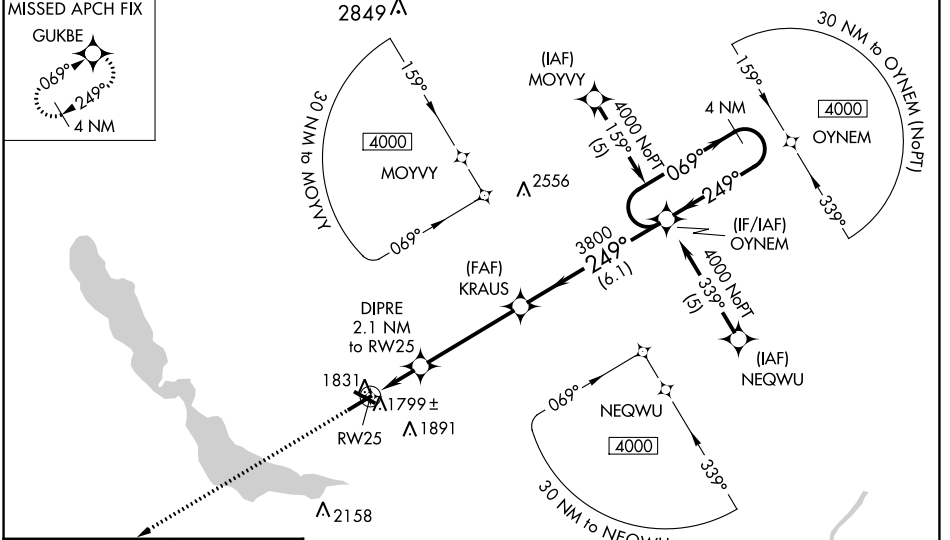
**RNP APCH-GPS.**

⚠ For uncompensated Baro-VNAV systems, LNAV/VNAV NA below -18°C or above 54°C. When local altimeter setting not received, use Dunkirk altimeter setting: increase LPV DA to 2113 feet and visibility all Cats ½ SM; all Cats ½ SM, LNAV/VNAV DA to 2246 feet and visibility all Cats ½ SM; increase all MDAs 200 feet and visibility LNAV Cat C ½ SM, LNAV Cat D ¼ SM, Circling Cat C ½ SM and Circling Cat D ¾ SM. For inoperative MALSR, increase LNAV Cat D visibility to 1¼ mile. For inoperative MALSR when using Dunkirk altimeter setting, increase LPV all Cats visibility to 1½ mile. Baro-VNAV and VDP NA when using Dunkirk altimeter setting. Circling to Rwy 13/31 NA at night.

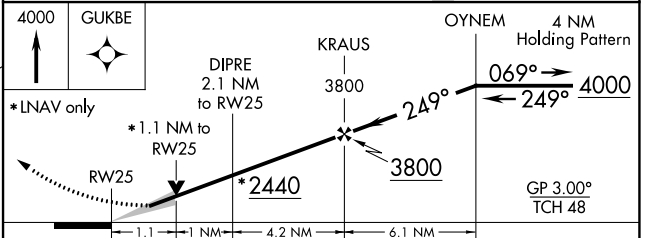
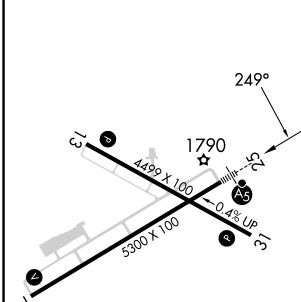
**MALSR**

**MISSED APPROACH:**  
Climb to 4000 direct GUKBE and hold.

AWOS-3PT <b>118.425</b>	BUFFALO APP CON * <b>126.05</b>	UNICOM <b>122.975 (CTAF) 0</b>
----------------------------	------------------------------------	-----------------------------------



ELEV 1723	<b>D</b>	TDZE 1721
-----------	----------	-----------



CATEGORY	A	B	C	D
LPV DA		1921-½	200 (200-½)	
LNAV/VNAV DA		2054-¾	333 (400-¾)	
LNAV MDA		2100-½ 379 (400-½)		2100-1 379 (400-1)
<b>C</b> CIRCLING	2200-1 477 (500-1)		2260-1½ 537 (600-1½)	2340-2 617 (700-2)

- REIL Rwy 31 0
- MIRL Rwy 13-31 0
- HIRL Rwy 7-25 0

# RNAV (GPS) RWY 25

NE-2, 22 FEB 2024 to 21 MAR 2024

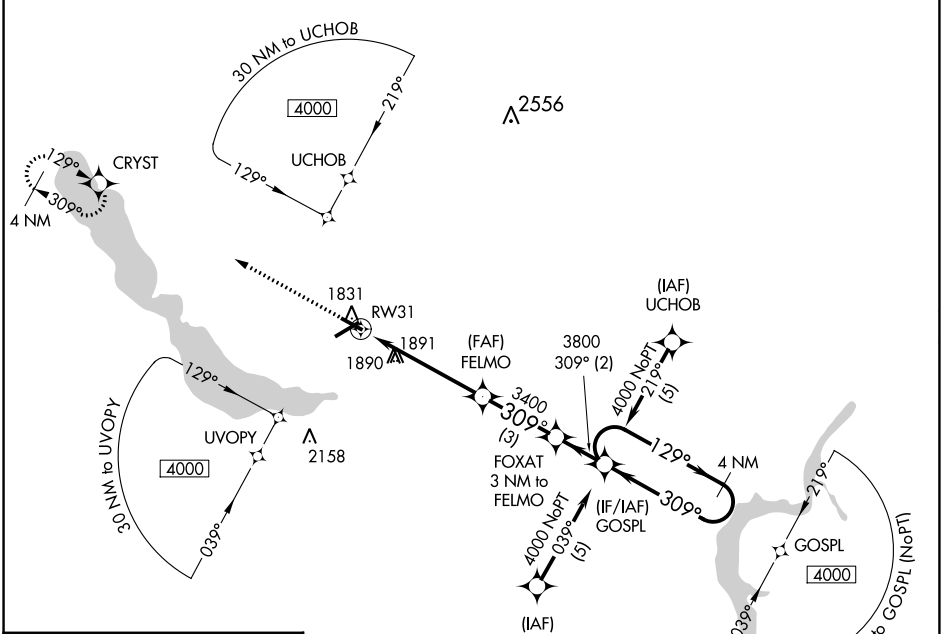
NE-2, 22 FEB 2024 to 21 MAR 2024

APP CRS <b>309°</b>	Rwy Idg <b>4499</b>
	TDZE <b>1715</b>
	Apt Elev <b>1723</b>

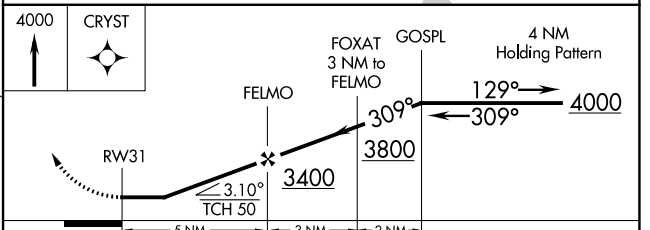
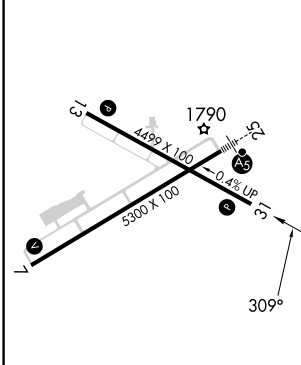
# RNAV (GPS) RWY 31

CHAUTAUQUA COUNTY/JAMESTOWN (JHW)

RNP APCH-GPS		MISSED APPROACH: Climb to 4000 direct CRYST WP and hold.
▼ Rwy 31 Straight-in/Circling and Circling to Rwy 13 NA at night. ▲ NA When local altimeter setting not received, use Dunkirk altimeter setting; increase all MDAs 200 feet and visibility LNAV Cats C/D ¼ SM, Circling Cat C ½ SM and Circling Cat D ¾ SM. Helicopter visibility reduction below 1 SM NA.		
AWOS-3PT <b>118.425</b>	BUFFALO APP CON * <b>126.05</b>	UNICOM <b>122.975 (CTAF) 0</b>



ELEV 1723	<b>D</b>	TDZE 1715
-----------	----------	-----------



CATEGORY	A	B	C	D
LNAV MDA	2200-1	485 (500-1)	2200-1¼ 485 (500-1¼)	2200-1½ 485 (500-1½)
<b>C</b> CIRCLING	2200-1	477 (500-1)	2260-1½ 537 (600-1½)	2340-2 617 (700-2)

NE-2, 22 FEB 2024 to 21 MAR 2024

NE-2, 22 FEB 2024 to 21 MAR 2024

APP CRS <b>069°</b>	Rwy Idg TDZE Apt Elev	<b>5300</b> <b>1722</b> <b>1723</b>
------------------------	-----------------------------	---

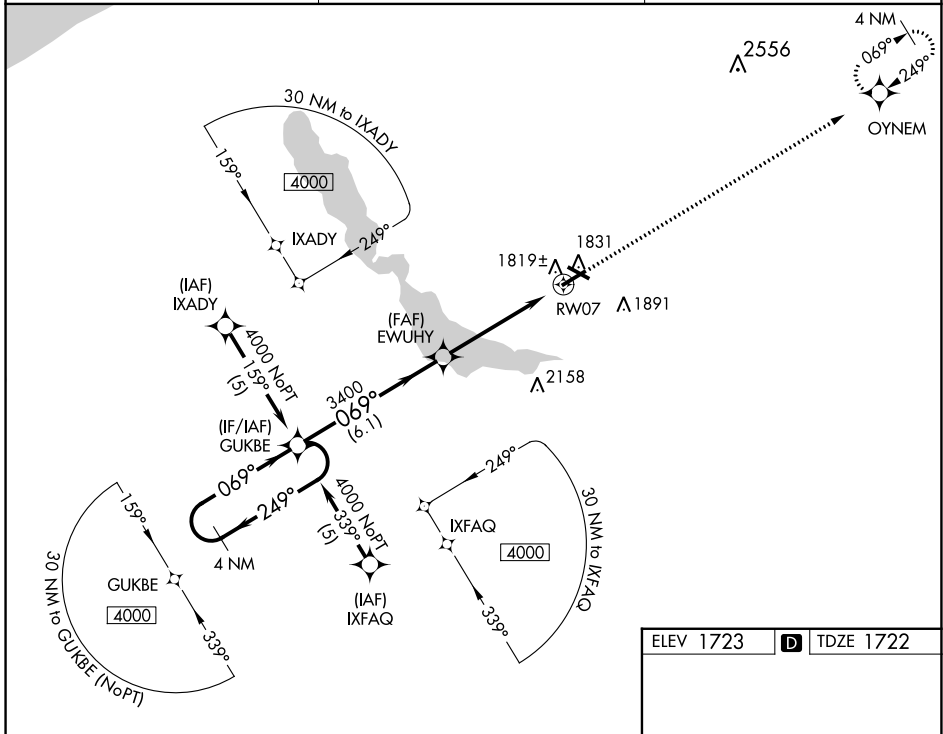
**RNAV (GPS) RWY 7**  
CHAUTAUQUA COUNTY/JAMESTOWN (JHW)

RNP APCH-GPS.

▼ Helicopter visibility reduction below 1 SM NA. When local altimeter setting not received, use Dunkirk altimeter setting: increase all MDAs 200 feet and visibility LNAV Cats C/D ½ SM, Circling Cat C ½ SM and Circling Cat D ¾ SM. Rwy 7 Straight-in/Circling and Circling to Rwy 13/31 NA at night.

▲ MISSED APPROACH: Climb to 4000 direct OYNEM and hold.

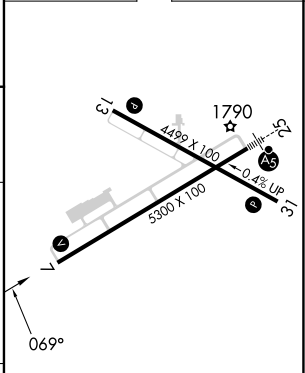
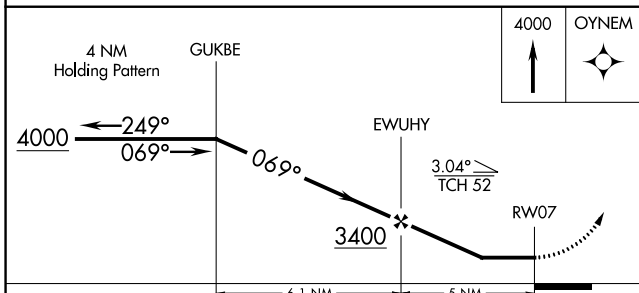
AWOS-3PT <b>118.425</b>	BUFFALO APP CON ★ <b>126.05</b>	UNICOM <b>122.975 (CTAF) ①</b>
----------------------------	------------------------------------	-----------------------------------



NE-2, 22 FEB 2024 to 21 MAR 2024

NE-2, 22 FEB 2024 to 21 MAR 2024

ELEV 1723	<b>D</b> TDZE 1722
-----------	--------------------



CATEGORY	A	B	C	D
LNAV MDA	2120-1 398 (400-1)			2120-1¼ 398 (400-1¼)
<b>C</b> CIRCLING	2200-1 477 (500-1)		2260-1½ 537 (600-1½)	2340-2 617 (700-2)

REIL Rwy 31 ①  
MIRL Rwy 13-31 ①  
HIRL Rwy 7-25 ①

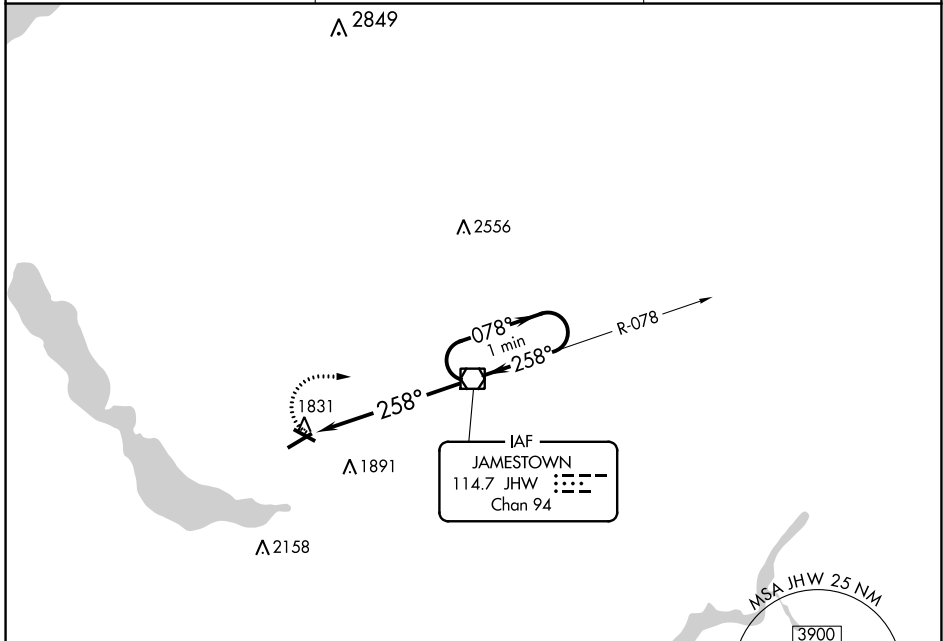
VOR/DME JHW <b>114.7</b> Chan <b>94</b>	APP CRS <b>258°</b>	Rwy Idg <b>5300</b> TDZE <b>1721</b> Apt Elev <b>1723</b>
---	------------------------	---

# VOR RWY 25

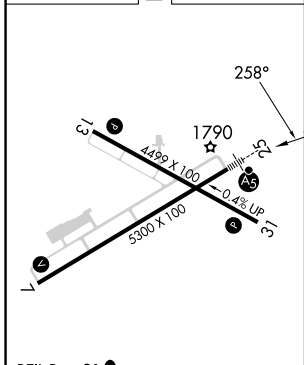
CHAUTAUQUA COUNTY/JAMESTOWN (JHW)

<p><b>∇</b> Inoperative table does not apply. Circling to Rwy 13/31 NA at night.</p>	<p>MALSR</p>	<p>MISSED APPROACH: Climbing right turn to 3700 direct JHW VOR/DME and hold.</p>

AWOS-3PT <b>118.425</b>	BUFFALO APP CON * <b>126.05</b>	UNICOM <b>122.975 (CTAF) 1</b>
----------------------------	------------------------------------	-----------------------------------



ELEV 1723	<b>D</b>	TDZE 1721
-----------	----------	-----------



REIL Rwy 31 <b>1</b>					
MIRL Rwy 13-31 <b>1</b>					
HIRL Rwy 7-25 <b>1</b>					
FAF to MAP 6.1 NM					
Knots	60	90	120	150	180
Min:Sec	6:06	4:04	3:03	2:26	2:02



3700	JHW	JHW VOR/DME	One Minute Holding Pattern
	JHW (6.1)	JHW (4.8)	
		258°	078°
		258°	3700
		≤ 2.97°	TCH 45
		1.3 NM	4.8 NM

CATEGORY	A	B	C	D
S-25	2180-1	459 (500-1)	2180-1¼ 459 (500-1¼)	2180-1½ 459 (500-1½)
<b>C</b> CIRCLING	2200-1	477 (500-1)	2260-1½ 537 (600-1½)	2340-2 617 (700-2)

NE-2, 22 FEB 2024 to 21 MAR 2024

NE-2, 22 FEB 2024 to 21 MAR 2024