

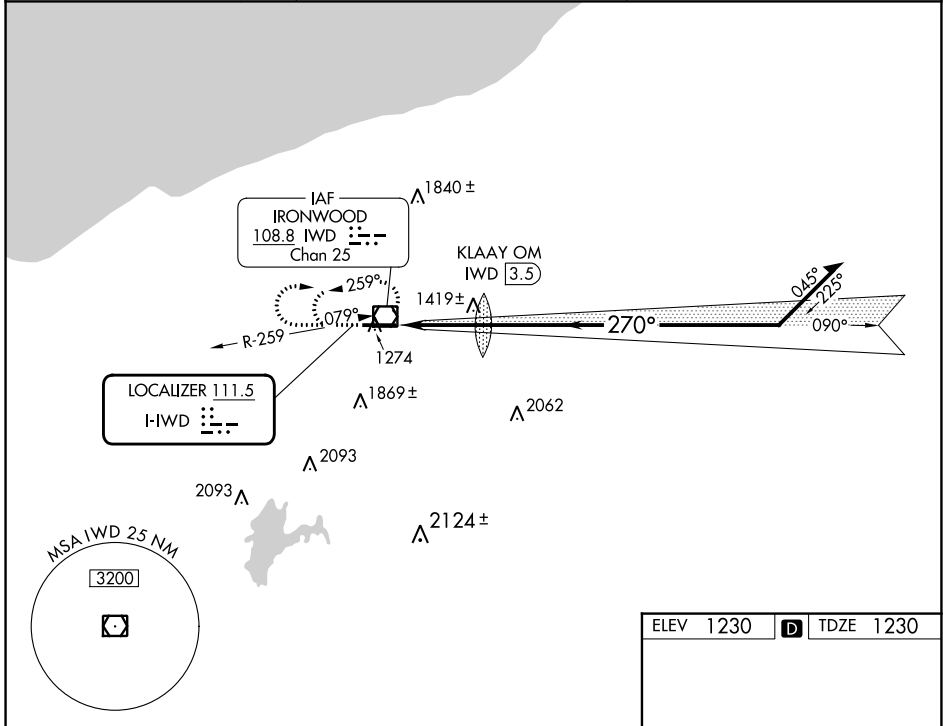
LOC I-IWD <b>111.5</b>	APP CRS <b>270°</b>	Rwy ldg <b>6501</b>
		TDZE <b>1230</b>
		Apt Elev <b>1230</b>

# ILS or LOC RWY 27

GOGEBIC/IRON COUNTY (IWD)

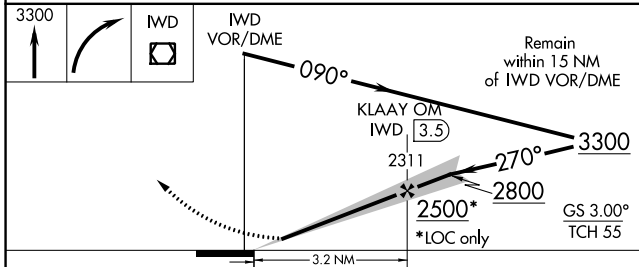
NA -27°C	When local altimeter setting not received, use Ashland altimeter setting: increase DA to 1562 feet; increase all MDA 140 feet and S-LOC 27 Cat C/D visibility 1/2 SM and Circling Cat B visibility 1/4 SM. For inop ALS when using Ashland altimeter setting, increase S-ILS 27 all Cats visibility to 1.	MALSR 	MISSED APPROACH: Climb to 3300 then right turn direct IWD VOR/DME and hold.
-------------	---	-----------	--

AWOS-3PT <b>125.175</b>	MINNEAPOLIS CENTER <b>133.55</b>	UNICOM <b>122.8 (CTAF)</b>
----------------------------	-------------------------------------	-------------------------------

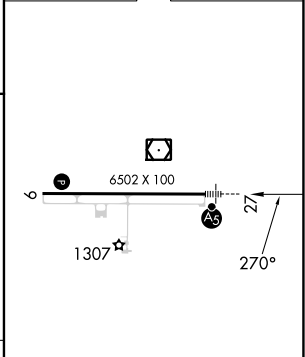


EC-1, 22 FEB 2024 to 21 MAR 2024

EC-1, 22 FEB 2024 to 21 MAR 2024



ELEV 1230	<b>D</b>	TDZE 1230
-----------	----------	-----------



CATEGORY	A	B	C	D
S-ILS 27		1430-1/2	200 (200-1/2)	
S-LOC 27	1720-1/2	490 (500-1/2)	1720-3/4 490 (500-3/4)	1720-1 490 (500-1)
CIRCLING	2100-1 1/4	870 (900-1 1/4)	2200-3 970 (1000-3)	2220-3 990 (1000-3)

REIL Rwy 9	<b>9</b>
HIRL Rwy 9-27	<b>9-27</b>
FAF to MAP 3.2 NM	
Knots	60 90 120 150 180
Min:Sec	3:12 2:08 1:36 1:17 1:04

WAAS CH <b>50212</b> <b>W27A</b>	APP CRS <b>270°</b>	Rwy Idg TDZE Apt Elev	<b>6501</b> <b>1230</b> <b>1230</b>
--	------------------------	-----------------------------	---

# RNAV (GPS) RWY 27

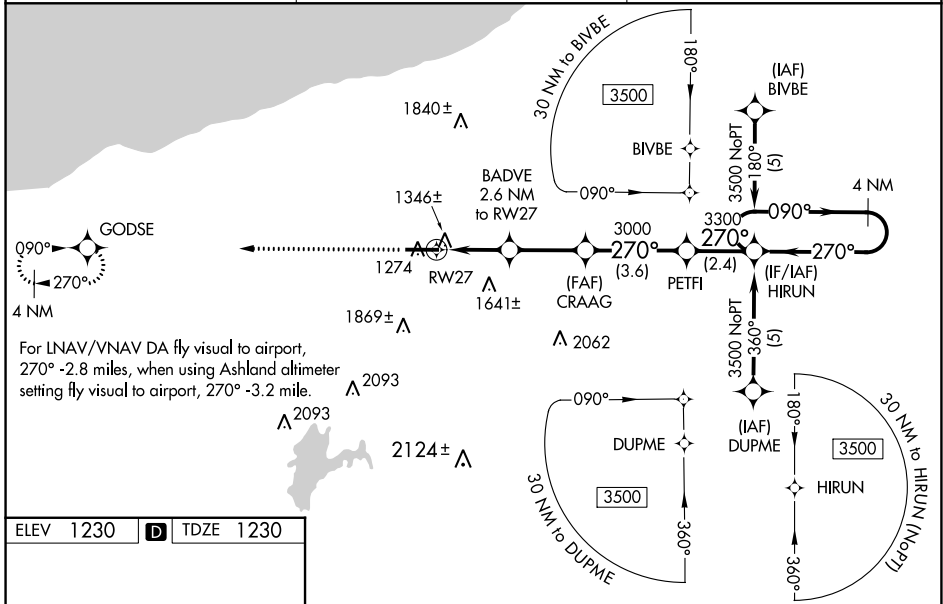
GOGEBIC/IRON COUNTY (IWD)

RNP APCH - GPS.

**⚠** Inoperative table does not apply to LPV and LNAV/VNAV all Cats and LNAV Cats A and B. For uncompensated Baro-VNAV systems, LNAV/VNAV NA below -17°C or above 46°C. When using Ashland altimeter setting: inop table does not apply to LNAV/VNAV all Cats and LNAV Cat A. When using Ashland altimeter setting: for inoperative MALSR, increase LNAV Cat B visibility to 1¼ mile. Baro-VNAV and VDP NA when using Ashland altimeter setting. When local altimeter setting not received, use Ashland altimeter setting: increase LPV DA to 1562 feet; increase LNAV/VNAV DA to 2298 feet and Cat C visibility ¼ SM; increase all MDA 140 feet and LNAV Cat C/D visibility ½ SM and Circling Cat B visibility ¼ SM.

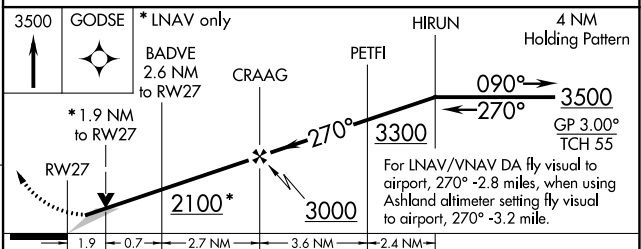
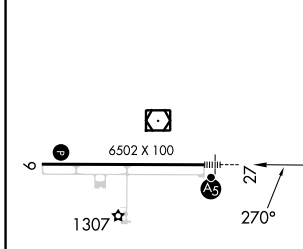
**MALSR**  
 MISSED APPROACH: Climb to 3500 direct GODSE and hold.

AWOS-3PT <b>125.175</b>	MINNEAPOLIS CENTER <b>133.55</b>	UNICOM <b>122.8 (CTAF)</b>
----------------------------	-------------------------------------	-------------------------------



For LNAV/VNAV DA fly visual to airport, 270° -2.8 miles, when using Ashland altimeter setting fly visual to airport, 270° -3.2 mile.

ELEV 1230	<b>D</b>	TDZE 1230
-----------	----------	-----------



CATEGORY	A	B	C	D
LPV DA	1430-1		200 (200-1)	
LNAV/VNAV DA	2166-2	936 (1000-2)	2166-2¾ 936 (1000-2¾)	2166-3 936 (1000-3)
LNAV MDA	1900-1	670 (700-1)	1900-1¼ 670 (700-1¼)	1900-1½ 670 (700-1½)
CIRCLING	2100-1¼	870 (900-1¼)	2200-3 970 (1000-3)	2220-3 990 (1000-3)

REIL Rwy 9 **⓪**  
HIRL Rwy 9-27 **⓪**

EC-1, 22 FEB 2024 to 21 MAR 2024

EC-1, 22 FEB 2024 to 21 MAR 2024

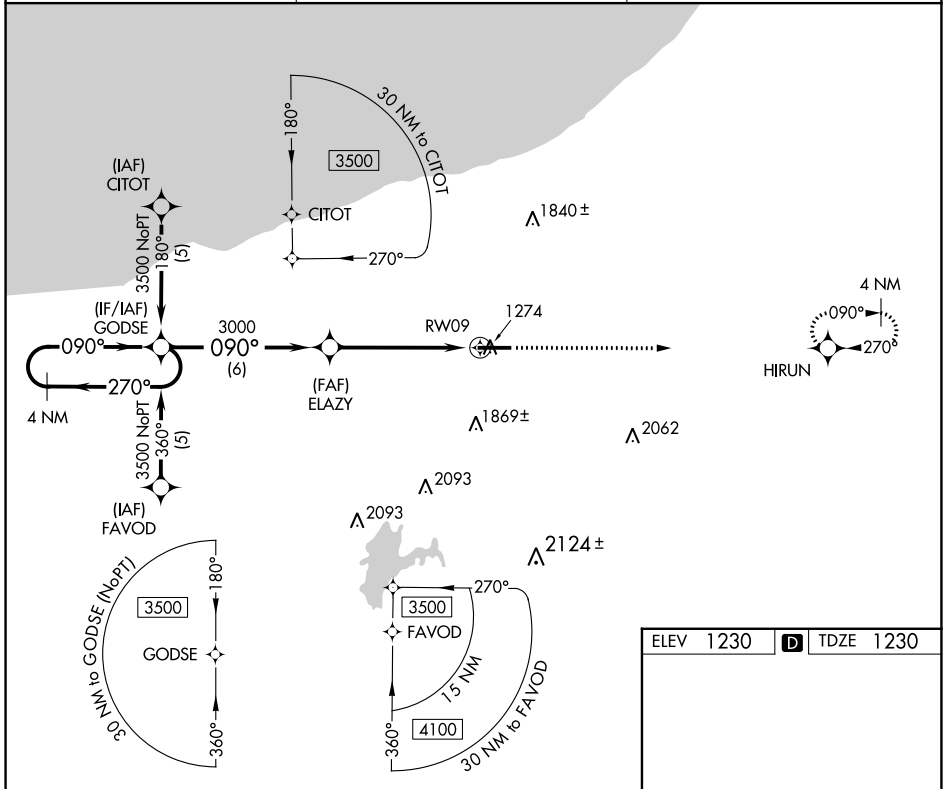
APP CRS	Rwy Idg	<b>6501</b>
<b>090°</b>	TDZE	<b>1230</b>
	Apt Elev	<b>1230</b>

# RNAV (GPS) RWY 9

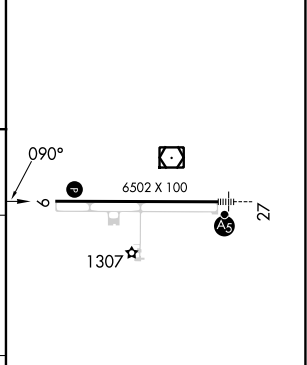
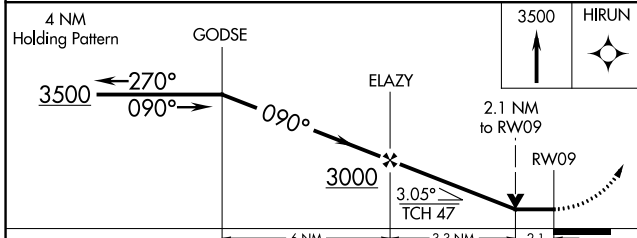
GOGEBIC/IRON COUNTY (IWD)

RNP APCH - GPS.		MISSED APPROACH: Climb to 3500 direct HIRUN and hold.
<p>Visibility reduction by helicopters NA. When local altimeter setting not received, use Ashland altimeter setting: increase all MDA 140 feet and LNAV Cat B visibility ¼ SM, Cat C/D visibility ½ SM and Circling Cat B visibility ¼ SM.</p>		

AWOS-3PT <b>125.175</b>	MINNEAPOLIS CENTER <b>133.55</b>	UNICOM <b>122.8 (CTAF)</b>
----------------------------	-------------------------------------	-------------------------------



ELEV 1230	TDZE 1230
-----------	-----------



CATEGORY	A	B	C	D
LNAV MDA	1940-1 710 (800-1)		1940-2 710 (800-2)	1940-2¼ 710 (800-2¼)
CIRCLING	2100-1¼ 870 (900-1¼)		2200-3 970 (1000-3)	2220-3 990 (1000-3)

REIL Rwy 9  
HIRL Rwy 9-27

EC-1, 22 FEB 2024 to 21 MAR 2024

EC-1, 22 FEB 2024 to 21 MAR 2024

VOR/DME IWD <b>108.8</b> Chan 25	APP CRS <b>079°</b>	Rwy ldg TDZE <b>1230</b> Apt Elev <b>1230</b>
--	------------------------	---

# VOR RWY 9

GOGEBIC/IRON COUNTY (IWD)

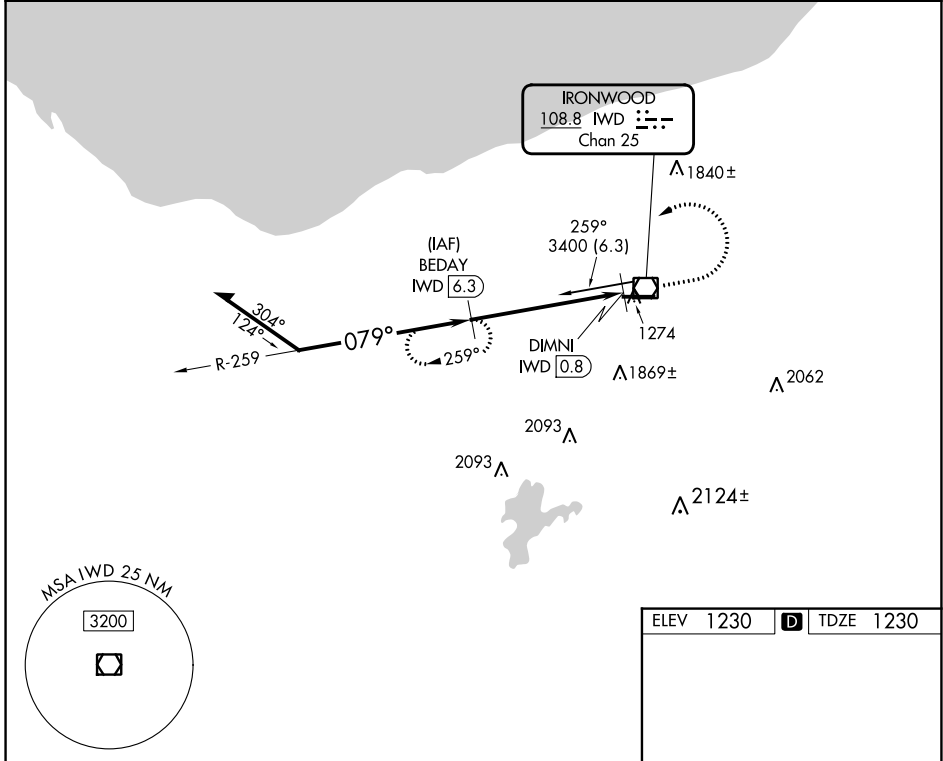
DME required.

**⚠** Rwy 9 helicopter visibility reduction below 1 SM NA. When local altimeter setting not received, use Ashland altimeter setting: increase all MDA 140 feet and S-9 Cat C visibility ¼ SM, Cat D visibility ½ SM and Circling Cat B visibility ¼ SM.

**⚠** -27°C

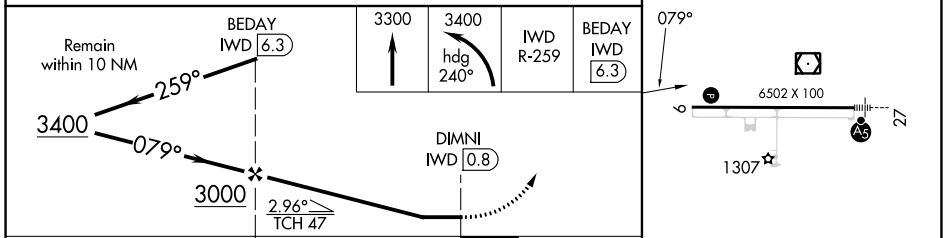
MISSED APPROACH: Climb to 3300 then climbing left turn to 3400 on heading 240° and IWD R-259 to BEDAY/6.3 DME and hold.

AWOS-3PT <b>125.175</b>	MINNEAPOLIS CENTER <b>133.55</b>	UNICOM <b>122.8 (CTAF)</b>
----------------------------	-------------------------------------	-------------------------------



EC-1, 22 FEB 2024 to 21 MAR 2024

EC-1, 22 FEB 2024 to 21 MAR 2024



CATEGORY	A	B	C	D
S-9	1740-1	510 (600-1)	1740-1½	510 (600-1½)
CIRCLING	2100-1¼	870 (900-1¼)	2200-3 970 (1000-3)	2220-3 990 (1000-3)

