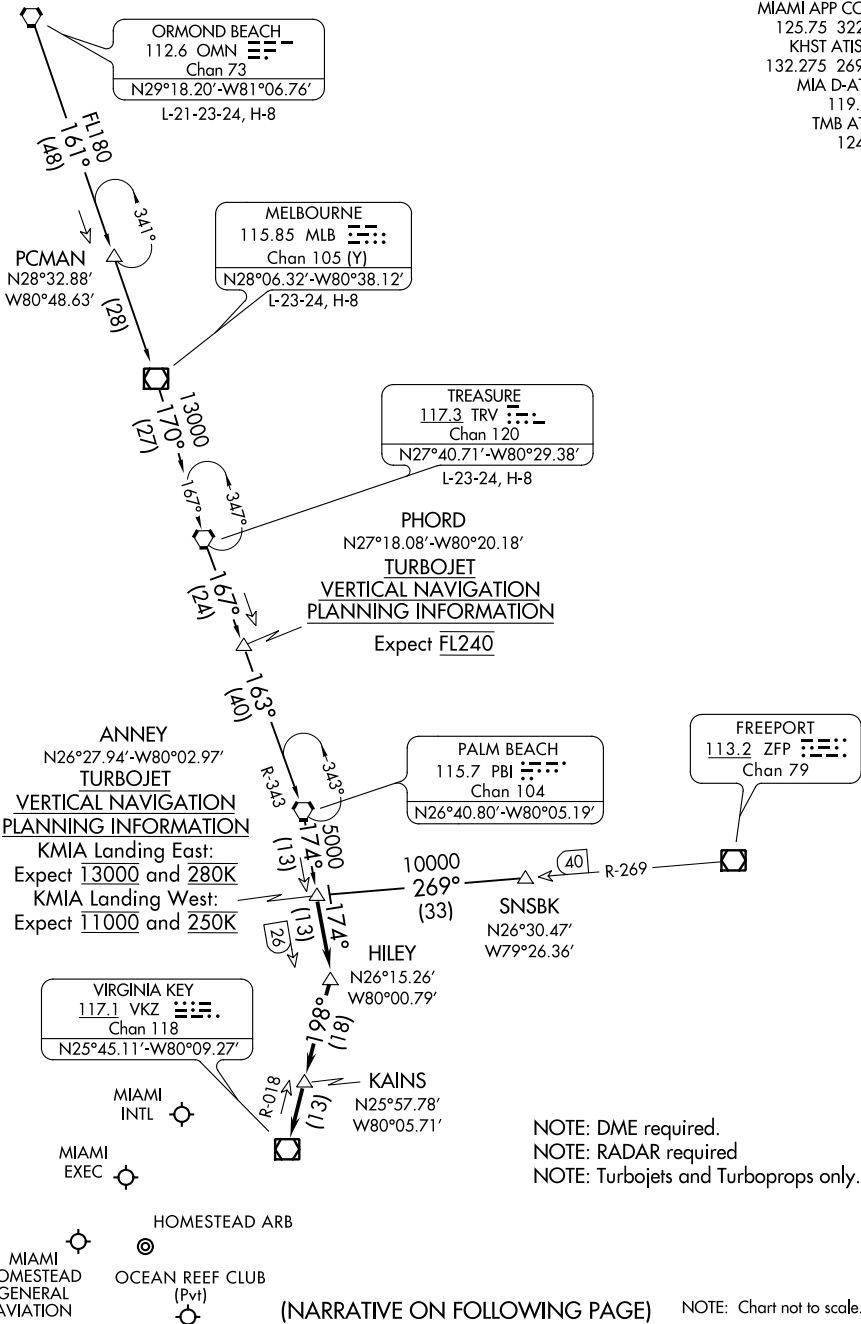


ANNEY FOUR ARRIVAL

MIAMI, FLORIDA

MIAMI APP CON
 125.75 322.3
 KHST ATIS ★
 132.275 269.9
 MIA D-ATIS
 119.15
 TMB ATIS
 124.0



SE-3, 22 FEB 2024 to 21 MAR 2024

SE-3, 22 FEB 2024 to 21 MAR 2024

(NARRATIVE ON FOLLOWING PAGE)

NOTE: Chart not to scale.

ANNEY FOUR ARRIVAL

(ANNEY.ANNEY4) 07DEC17

MIAMI, FLORIDA

ANNEY FOUR ARRIVAL

ARRIVAL ROUTE DESCRIPTION

MELBOURNE TRANSITION (MLB.ANNEY4): From over MLB VOR/DME on MLB R-170 to TRV VORTAC, then on TRV R-167 to PHORD, then on PBI R-343 to PBI VORTAC, then on PBI R-174 to ANNEY. Thence

ORMOND BEACH TRANSITION (OMN.ANNEY4): From over OMN VORTAC on OMN R-161 to MLB VORTAC, then on MLB R-170 to TRV VORTAC, then on TRV R-167 to PHORD, then on PBI R-343 to PBI VORTAC, then on PBI R-174 to ANNEY. Thence

SNSBK TRANSITION (SNSBK.ANNEY4): From over SNSBK on ZFP R-269 to ANNEY. Thence

TREASURE TRANSITION (TRV.ANNEY4): From over TRV VORTAC on TRV R-167 to PHORD, then on PBI R-343 to PBI VORTAC, then on PBI R-174 to ANNEY. Thence

. . . . From over ANNEY on PBI R-174 to HILEY/PBI 26 DME, then on VKZ R-018 to KAINS/VKZ 13 DME, then on VKZ R-018 to VKZ VOR/DME. Expect RADAR vectors to final approach course after KAINS.

SE-3, 22 FEB 2024 to 21 MAR 2024

SE-3, 22 FEB 2024 to 21 MAR 2024

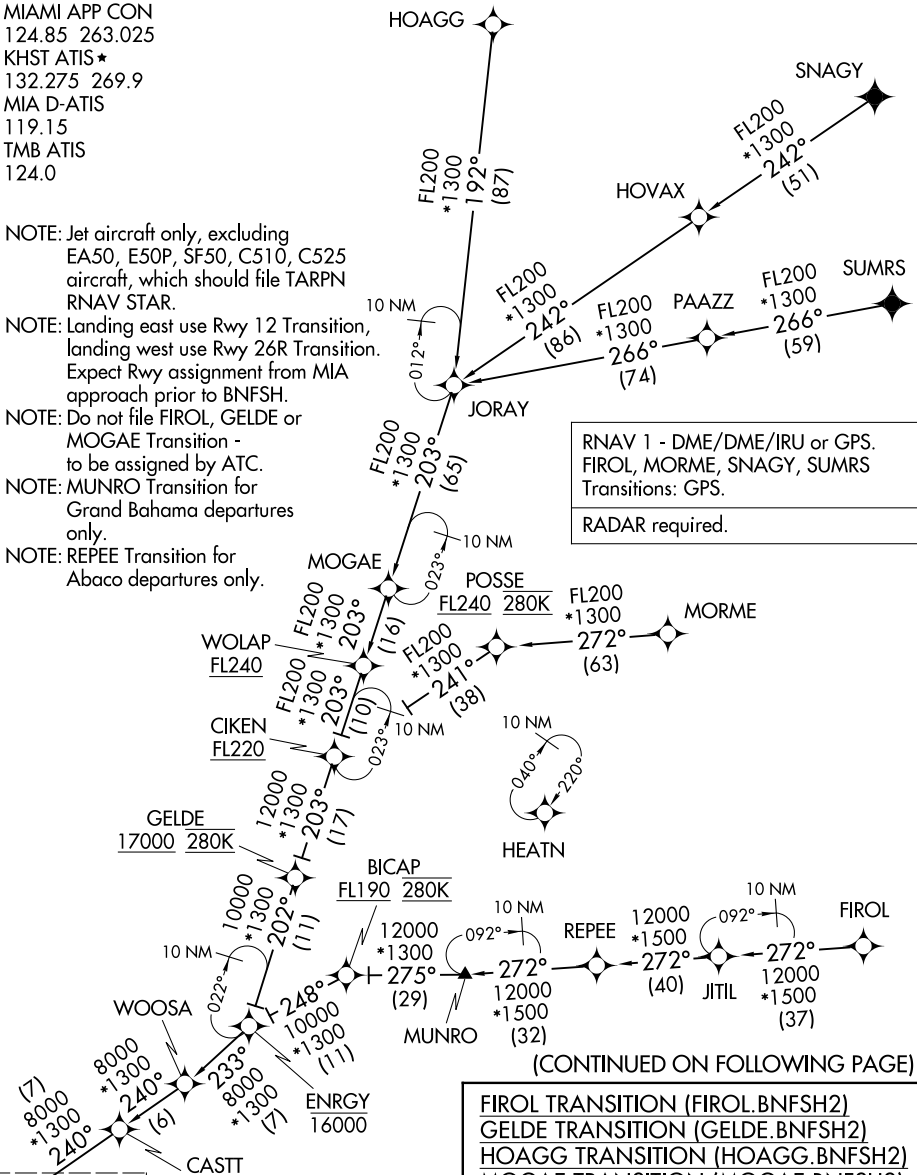
BNFSH TWO ARRIVAL(RNAV) Transition Routes

MIAMI, FLORIDA

MIAMI APP CON
 124.85 263.025
 KHST ATIS*
 132.275 269.9
 MIA D-ATIS
 119.15
 TMB ATIS
 124.0

- NOTE: Jet aircraft only, excluding EA50, E50P, SF50, C510, C525 aircraft, which should file TARPN RNAV STAR.
- NOTE: Landing east use Rwy 12 Transition, landing west use Rwy 26R Transition. Expect Rwy assignment from MIA approach prior to BNFSH.
- NOTE: Do not file FIROL, GELDE or MOGAE Transition - to be assigned by ATC.
- NOTE: MUNRO Transition for Grand Bahama departures only.
- NOTE: REPEE Transition for Abaco departures only.

RNAV 1 - DME/DME/IRU or GPS.
 FIROL, MORME, SNAGY, SUMRS
 Transitions: GPS.
 RADAR required.



(CONTINUED ON FOLLOWING PAGE)

- FIROL TRANSITION (FIROL.BNFSH2)
- GELDE TRANSITION (GELDE.BNFSH2)
- HOAGG TRANSITION (HOAGG.BNFSH2)
- MOGAE TRANSITION (MOGAE.BNFSH2)
- MORME TRANSITION (MORME.BNFSH2)
- MUNRO TRANSITION (MUNRO.BNFSH2)
- REPEE TRANSITION (REPEE.BNFSH2)
- SNAGY TRANSITION (SNAGY.BNFSH2)
- SUMRS TRANSITION (SUMRS.BNFSH2)

BNFSH
 11000
 See following page for arrival routes.

NOTE: Chart not to scale.

SE-3, 22 FEB 2024 to 21 MAR 2024

SE-3, 22 FEB 2024 to 21 MAR 2024

BNFSH TWO ARRIVAL(RNAV) Transition Routes

MIAMI, FLORIDA

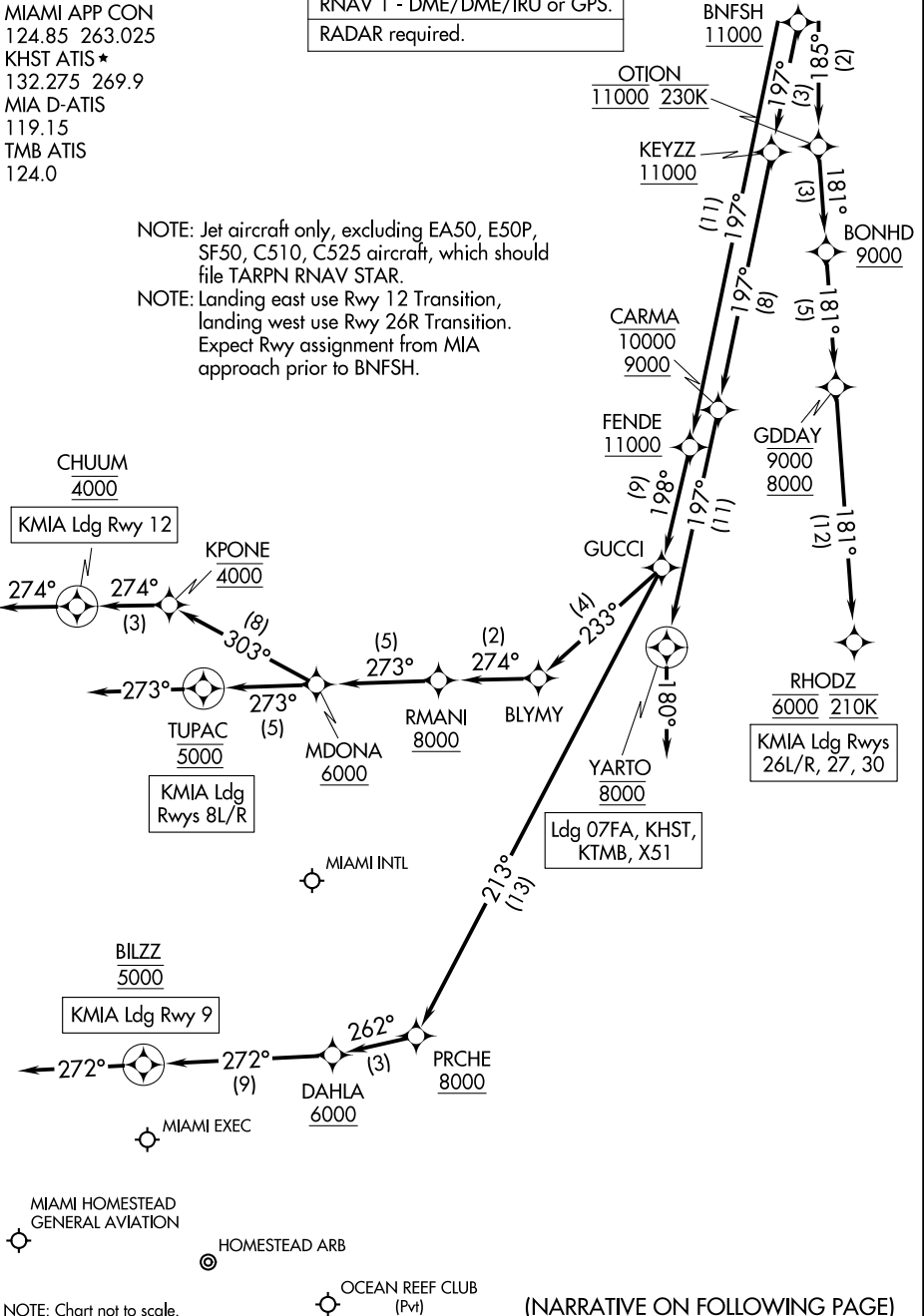
BNFSH TWO ARRIVAL(RNAV) Arrival Routes

MIAMI, FLORIDA

MIAMI APP CON
 124.85 263.025
 KHST ATIS *
 132.275 269.9
 MIA D-ATIS
 119.15
 TMB ATIS
 124.0

RNAV 1 - DME/DME/IRU or GPS.
 RADAR required.

NOTE: Jet aircraft only, excluding EA50, E50P, SF50, C510, C525 aircraft, which should file TARPEN RNAV STAR.
 NOTE: Landing east use Rwy 12 Transition, landing west use Rwy 26R Transition. Expect Rwy assignment from MIA approach prior to BNFSH.



NOTE: Chart not to scale.

(NARRATIVE ON FOLLOWING PAGE)

BNFSH TWO ARRIVAL(RNAV) Arrival Routes

MIAMI, FLORIDA

ARRIVAL ROUTE DESCRIPTION

LANDING KMIA RUNWAYS 8L/R: From BNFSH on track 197° to cross FENDE at or above 11000, then on track 198° to GUCCI, then on track 233° to BLYMY, then on track 274° to cross RMANI at or above 8000, then on track 273° to cross MDONA at or above 6000, then on track 273° to cross TUPAC at 5000, then on track 273°. Expect RADAR vectors to final approach course.

LANDING KMIA RUNWAY 9: From BNFSH on track 197° to cross FENDE at or above 11000, then on track 198° to GUCCI, then on track 213° to cross PRCHE at or above 8000, then on track 262° to cross DAHLA at or above 6000, then on track 272° to cross BILZZ at 5000, then on track 272°. Expect RADAR vectors to final approach course.

LANDING KMIA RUNWAY 12: From BNFSH on track 197° to cross FENDE at or above 11000, then on track 198° to GUCCI, then on track 233° to BLYMY, then on track 274° to cross RMANI at or above 8000, then on track 273° to cross MDONA at or above 6000, then on track 303° to cross KPONE at 4000, then on track 274° to cross CHUUM at 4000, then on track 274°. Expect RADAR vectors to final approach course.

LANDING KMIA RUNWAYS 26L/R, 27, 30: From BNFSH on track 185° to cross OTION at 11000 and at 230K, then on track 181° to cross BONHD at or above 9000, then on track 181° to cross GDDAY between 8000 and 9000, then on track 181° to cross RHODZ at 6000 and at 210K. Expect ILS or LOC Rwy 26L, Rwy 26R, or RADAR vectors Rwy 27, Rwy 30 approach.

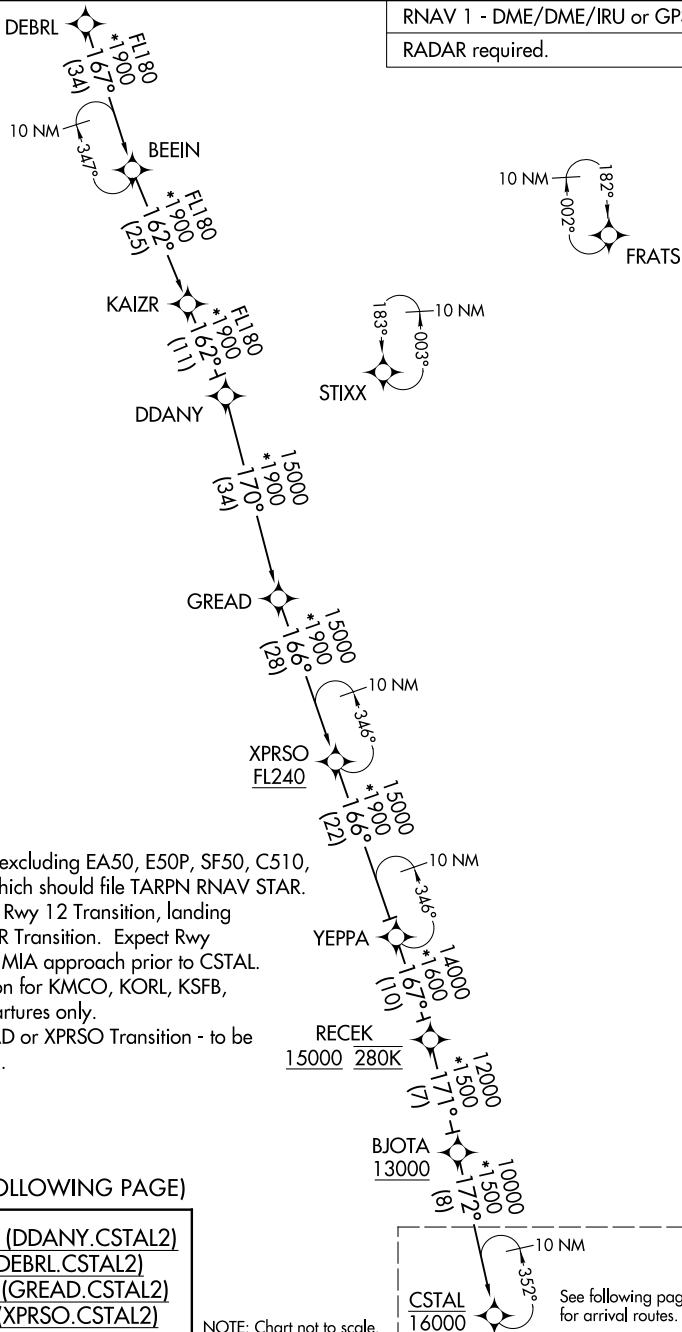
LANDING 07FA/X51/KHST/KTMB: From BNFSH on track 197° to cross KEYZZ at or above 11000, then on track 197° to cross CARMA between 9000 and 10000, then on track 197° to cross YARTO at 8000, then on heading 180° or as assigned by ATC. Expect RADAR vectors to final approach course.

CSTAL TWO ARRIVAL (RNAV) Transition Routes

MIAMI, FLORIDA

MIAMI APP CON
 124.85 263.025
 KHST ATIS★
 132.275 269.9
 MIA D-ATIS
 119.15
 TMB ATIS
 124.0
 X51 AWOS-3
 118.375

RNAV 1 - DME/DME/IRU or GPS.
 RADAR required.



NOTE: Jet aircraft only, excluding EA50, E50P, SF50, C510, C525 aircraft, which should file TARPEN RNAV STAR.

NOTE: Landing east use Rwy 12 Transition, landing west use Rwy 26R Transition. Expect Rwy assignment from MIA approach prior to CSTAL.

NOTE: DDANY Transition for KMCO, KORL, KSF6, KISM, KLEE departures only.

NOTE: Do not file GREAD or XPRSO Transition - to be assigned by ATC.

(CONTINUED ON FOLLOWING PAGE)

DDANY TRANSITION (DDANY.CSTAL2)
 DEBRL TRANSITION (DEBRL.CSTAL2)
 GREAD TRANSITION (GREAD.CSTAL2)
 XPRSO TRANSITION (XPRSO.CSTAL2)

NOTE: Chart not to scale.

See following page for arrival routes.

SE-3, 22 FEB 2024 to 21 MAR 2024

SE-3, 22 FEB 2024 to 21 MAR 2024

(CSTAL.CSTAL2) 23222

AL-257 (FAA)

CSTAL TWO ARRIVAL (RNAV) Arrival Routes

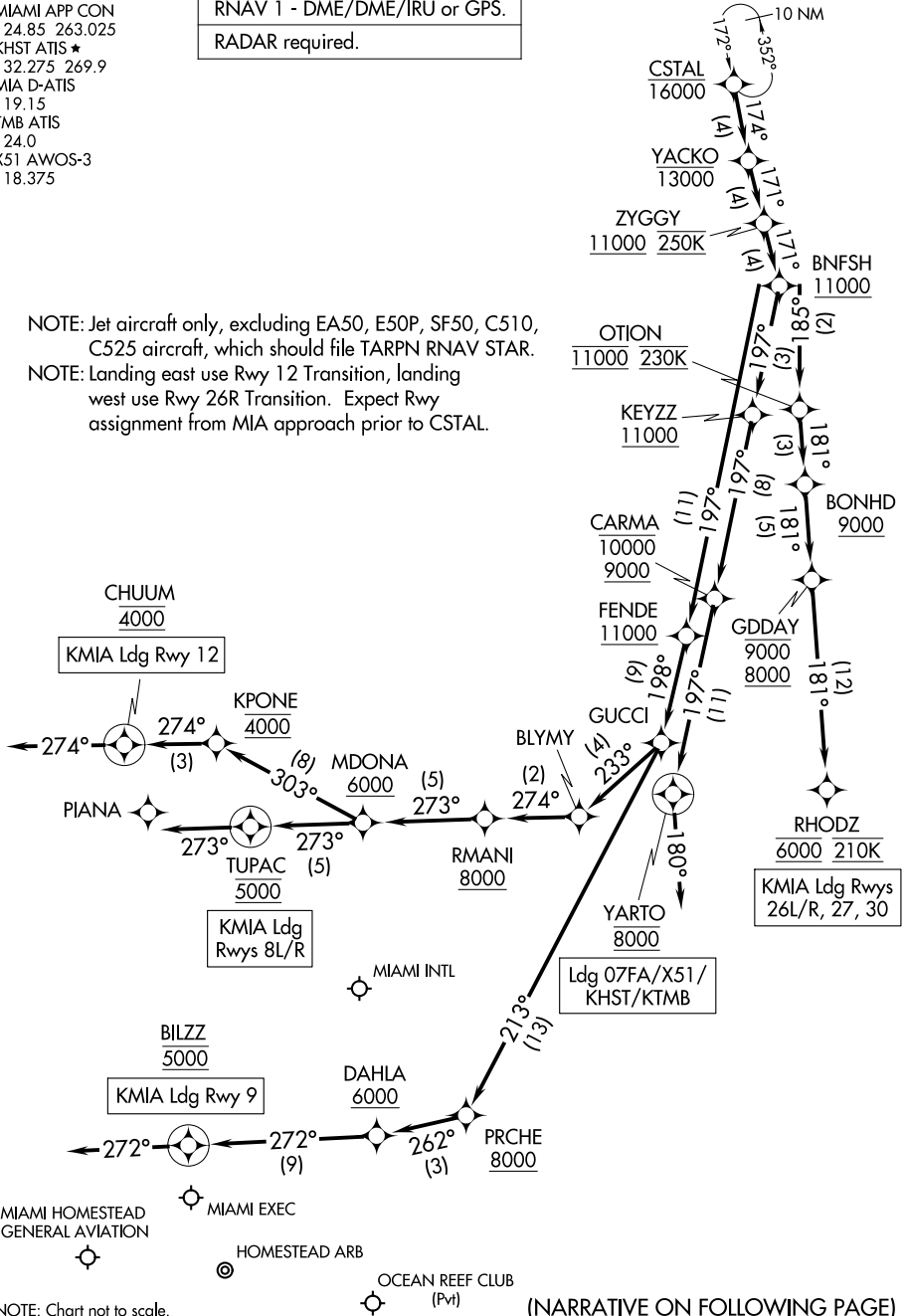
MIAMI, FLORIDA

MIAMI APP CON
 124.85 263.025
 KHST ATIS ★
 132.275 269.9
 MIA D-ATIS
 119.15
 TMB ATIS
 124.0
 X51 AWOS-3
 118.375

RNAV 1 - DME/DME/IRU or GPS.
RADAR required.

NOTE: Jet aircraft only, excluding EA50, E50P, SF50, C510, C525 aircraft, which should file TARPEN RNAV STAR.

NOTE: Landing east use Rwy 12 Transition, landing west use Rwy 26R Transition. Expect Rwy assignment from MIA approach prior to CSTAL.



SE-3, 22 FEB 2024 to 21 MAR 2024

SE-3, 22 FEB 2024 to 21 MAR 2024

NOTE: Chart not to scale.

(NARRATIVE ON FOLLOWING PAGE)

CSTAL TWO ARRIVAL (RNAV) Arrival Routes

MIAMI, FLORIDA

(CSTAL.CSTAL2) 19MAY22

ARRIVAL ROUTE DESCRIPTION

LANDING KMIA RUNWAYS 8L/R: From CSTAL on track 174° to cross YACKO at or below 13000, then on track 171° to cross ZYGGY at or above 11000 and at 250K, then on track 171° to cross BNFSH at or above 11000, then on track 197° to cross FENDE at or above 11000, then on track 198° to GUCCI, then on track 233° to BLYMY, then on track 274° to cross RMANI at or above 8000, then on track 273° to cross MDONA at or above 6000, then on track 273° to cross TUPAC at 5000, then on track 273°. Expect RADAR vectors to final approach course.

LANDING KMIA RUNWAY 9: From CSTAL on track 174° to cross YACKO at or below 13000, then on track 171° to cross ZYGGY at or above 11000 and at 250K, then on track 171° to cross BNFSH at or above 11000, then on track 197° to cross FENDE at or above 11000, then on track 198° to GUCCI, then on track 213° to cross PRCHE at or above 8000, then on track 262° to cross DAHLA at or above 6000, then on track 272° to cross BILZZ at 5000, then on track 272°. Expect RADAR vectors to final approach course.

LANDING KMIA RUNWAY 12: From CSTAL on track 174° to cross YACKO at or below 13000, then on track 171° to cross ZYGGY at or above 11000 and at 250K, then on track 171° to cross BNFSH at or above 11000, then on track 197° to cross FENDE at or above 11000, then on track 198° to GUCCI, then on track 233° to BLYMY, then on track 274° to cross RMANI at or above 8000, then on track 273° to cross MDONA at or above 6000, then on track 303° to cross KPONE at 4000, then on track 274° to cross CHUUM at 4000, then on heading 274°. Expect RADAR vectors to final approach course.

LANDING KMIA RUNWAY 26L/R, 27, 30: From CSTAL on track 174° to cross YACKO at or below 13000, then on track 171° to cross ZYGGY at or above 11000 and at 250K, then on track 171° to cross BNFSH at or above 11000, then on track 185° to cross OTION at 11000 and at 230K, then on track 181° to cross BONHD at or above 9000, then on track 181° to cross GDDAY between 8000 and 9000, then on track 181° to cross RHODZ at 6000 and at 210K. Expect ILS or RNAV Rwy 26L/R approach or RADAR vectors to final approach course.

LANDING 07FA/X51/KHST/KTMB: From CSTAL on track 174° to cross YACKO at or below 13000, then on track 171° to cross ZYGGY at or above 11000 and at 250K, then on track 171° to cross BNFSH at or above 11000, then on track 197° to cross KEYZZ at or above 11000, then on track 197° to cross CARMA between 9000 and 10000, then on track 197° to cross YARTO at 8000, then on heading 180°. Expect RADAR vectors to final approach course.

DVALL THREE ARRIVAL

MIAMI APP CON
 120.5 350.225
 FLL D-ATIS
 135.0
 FXE ATIS
 119.85
 KHST ATIS ★
 132.275 269.9
 MIA D-ATIS
 119.15
 OPF ATIS
 125.9
 PMP ATIS
 120.55
 TMB ATIS
 124.0

WEVER
 N25° 33.14' - W80° 54.82'
**TURBOJET VERTICAL NAVIGATION
 PLANNING INFORMATION**

Miami Intl landing East: Expect clearance
 to cross at 10000' and 250K.
 Miami Intl landing West: Expect clearance
 to cross at 14000' and 250K.

LA BELLE
 110.4 LBV
 Chan 41

POMPANO BEACH AIR PARK
 FORT LAUDERDALE EXEC
 FORT LAUDERDALE-HOLLYWOOD INTL
 MIAMI-OPA LOCKA EXEC

DOLPHIN
 113.9 DHP
 Chan 86
 N25° 48.00' - W80° 20.94'

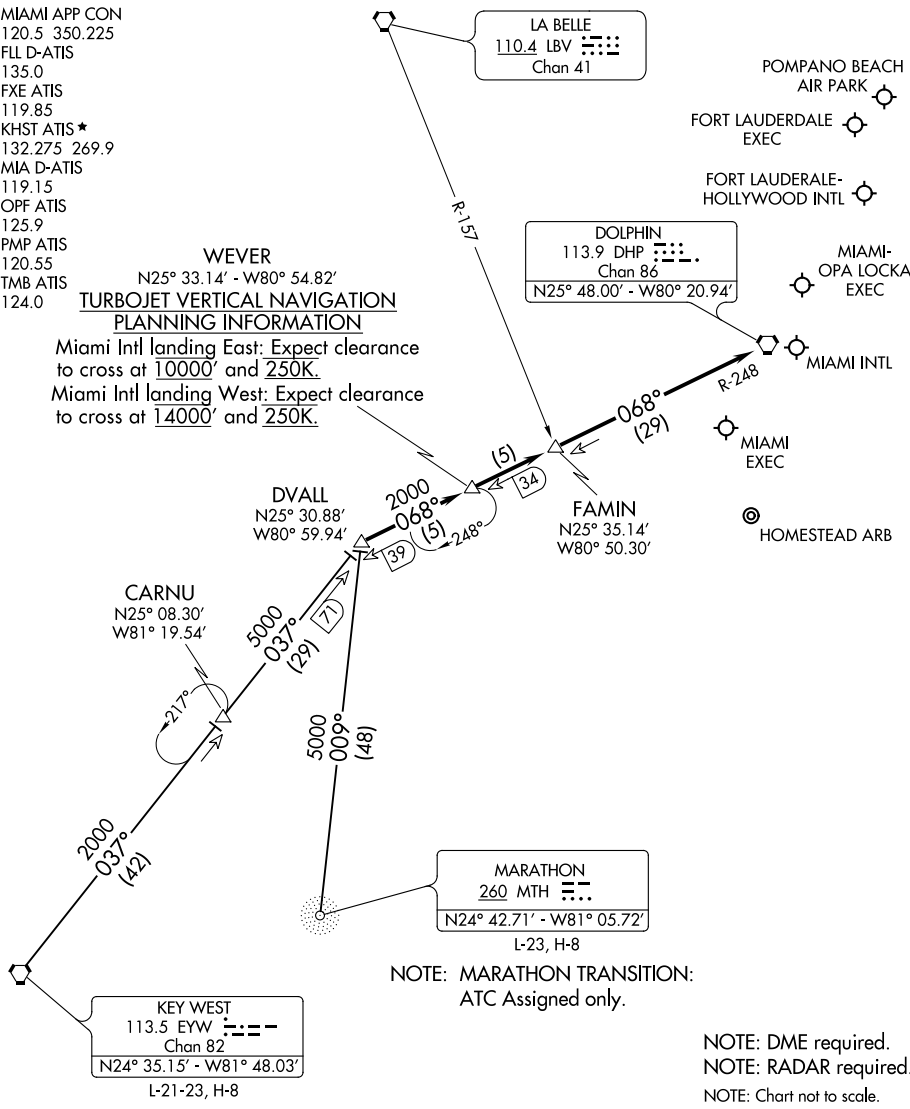
FAMIN
 N25° 35.14' - W80° 50.30'

MARATHON
 260 MTH
 L-23, H-8
 N24° 42.71' - W81° 05.72'

KEY WEST
 113.5 EYW
 Chan 82
 N24° 35.15' - W81° 48.03'
 L-21-23, H-8

NOTE: MARATHON TRANSITION:
 ATC Assigned only.

NOTE: DME required.
 NOTE: RADAR required.
 NOTE: Chart not to scale.



SE-3, 22 FEB 2024 to 21 MAR 2024

SE-3, 22 FEB 2024 to 21 MAR 2024

KEY WEST TRANSITION (EYW.DVALL3): From over EYW VORTAC on EYW R-037 to DVALL INT. Thence. . . .
MARATHON TRANSITION (MTH.DVALL3): From over MTH NDB on bearing 009° to DVALL INT. Thence. . . .
 . . . From over DVALL INT via DHP R-248 to DHP VORTAC. Expect RADAR vectors to final approach course after FAMIN INT.

DVALL THREE ARRIVAL

FOWEE TWO ARRIVAL
(FOWEE:FOWEE2) 02DEC21

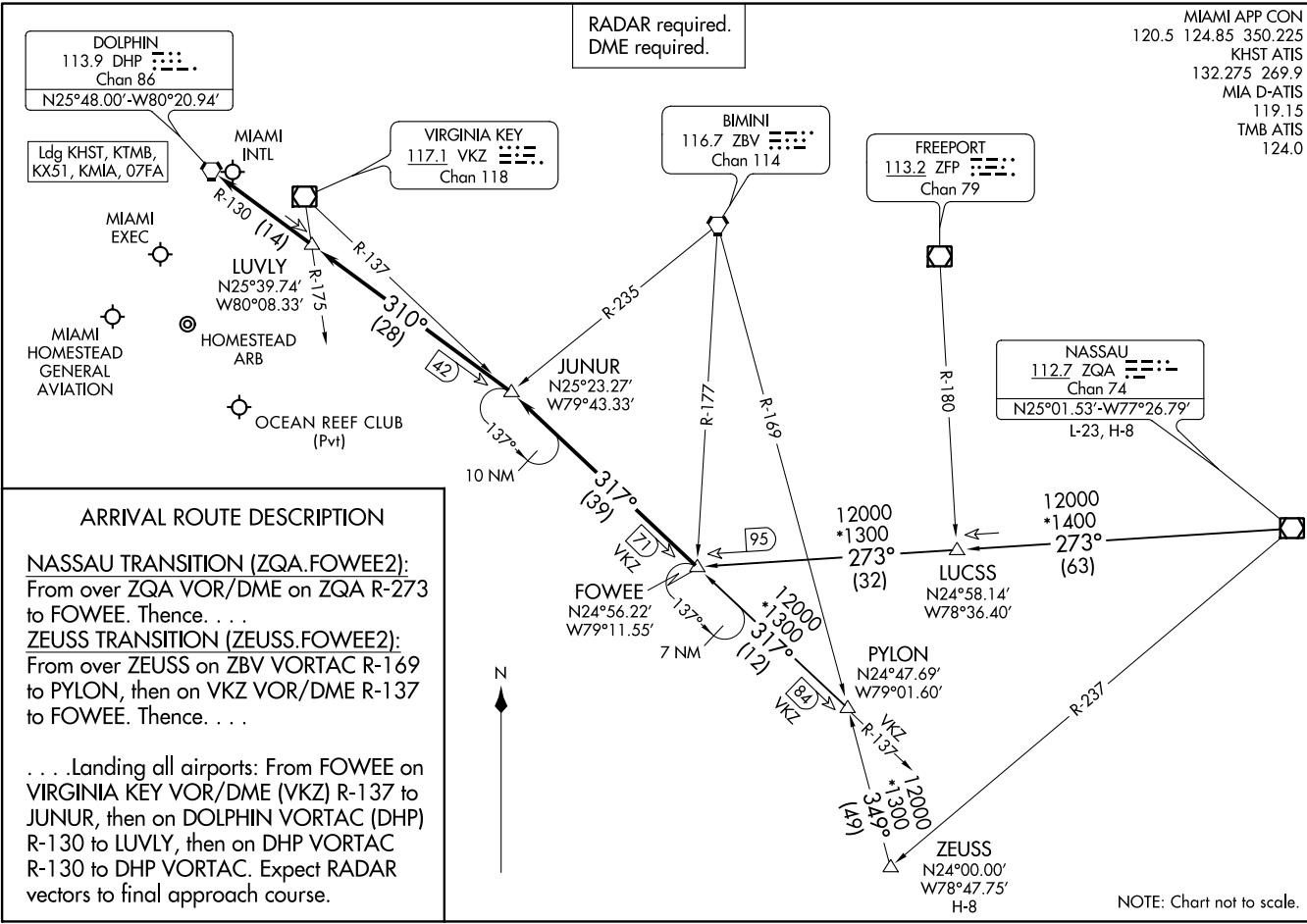
(FOWEE:FOWEE2) 23222
FOWEE TWO ARRIVAL

MIAMI APP CON
120.5 124.85 350.225
KHST ATIS *
132.275 269.9
MIA D-ATIS
119.15
TMB ATIS
124.0

AL-257 (FAA)

MIAMI, FLORIDA

RADAR required.
DME required.



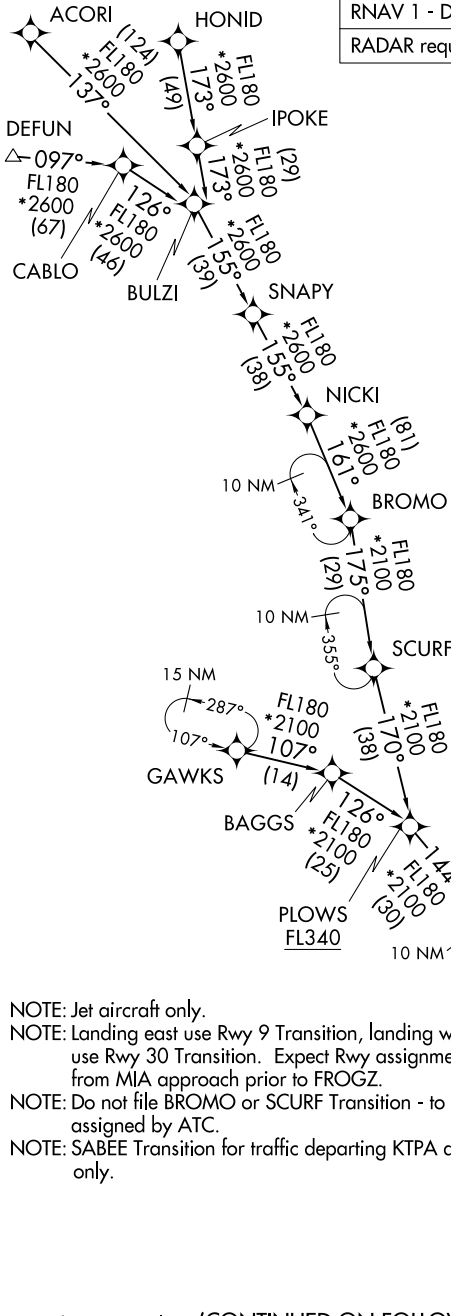
NOTE: Chart not to scale.

FROGZ FOUR ARRIVAL (RNAV) Transition Routes

MIAMI, FLORIDA

RNAV 1 - DME/DME/IRU or GPS.
RADAR required.

MIAMI APP CON
120.5 350.225
KHST ATIS*
132.275 269.9
MIA D-ATIS
119.15
TMB ATIS
124.0
X51 AWOS-3
118.375



- ACORI TRANSITION (ACORI.FROGZ4)
- BROMO TRANSITION (BROMO.FROGZ4)
- DEFUN TRANSITION (DEFUN.FROGZ4)
- GAWKS TRANSITION (GAWKS.FROGZ4)
- HONID TRANSITION (HONID.FROGZ4)
- MARCI TRANSITION (MARCI.FROGZ4)
- SABEE TRANSITION (SABEE.FROGZ4)
- SCURF TRANSITION (SCURF.FROGZ4)

SE-3, 22 FEB 2024 to 21 MAR 2024

SE-3, 22 FEB 2024 to 21 MAR 2024

- NOTE: Jet aircraft only.
- NOTE: Landing east use Rwy 9 Transition, landing west use Rwy 30 Transition. Expect Rwy assignment from MIA approach prior to FROGZ.
- NOTE: Do not file BROMO or SCURF Transition - to be assigned by ATC.
- NOTE: SABEE Transition for traffic departing KTPA area only.

NOTE: Chart not to scale. (CONTINUED ON FOLLOWING PAGE)

See following page for arrival routes.

FROGZ FOUR ARRIVAL (RNAV) Transition Routes (FROGZ.FROGZ4) 15JUN23

MIAMI, FLORIDA

RNAV 1 - DME/DME/IRU or GPS.

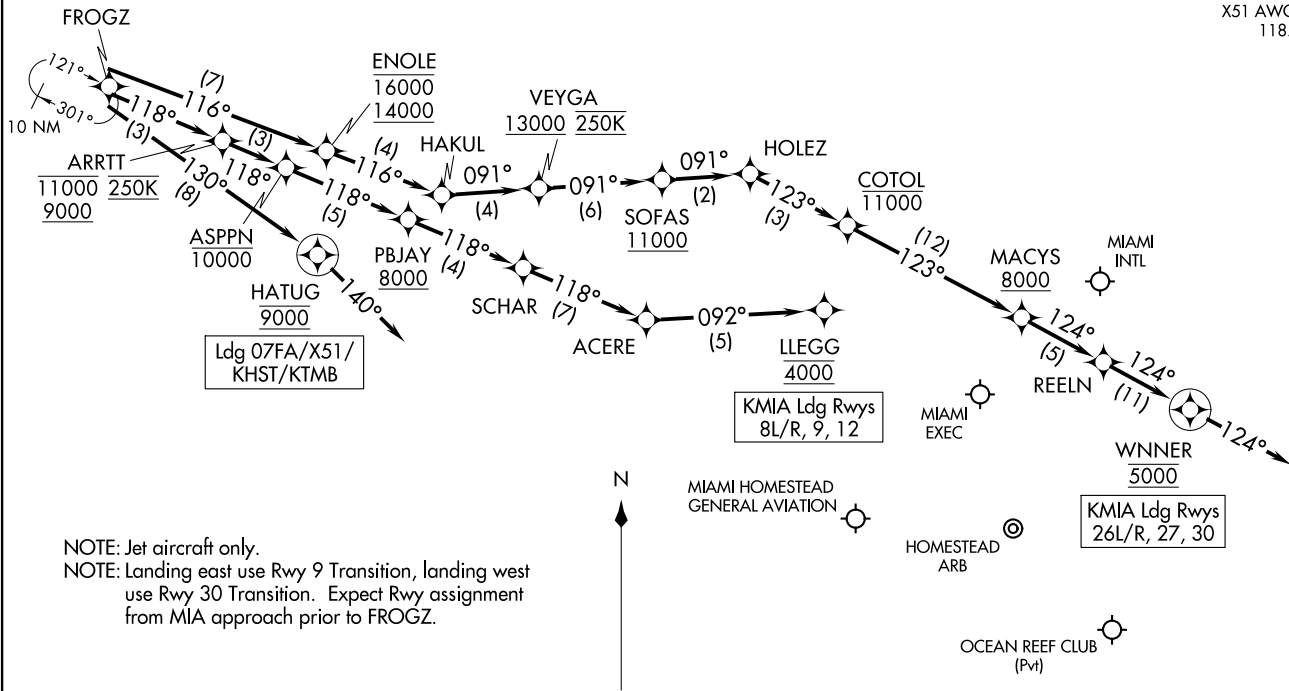
RADAR required.

MIAMI APP CON
120.5 350.225
KHST ATIS *
132.275 269.9
MIA D-ATIS
119.15
TMB ATIS
124.0
X51 AWOS-3
118.375

FROGZ FOUR ARRIVAL (RNAV)
(FROGZ, FROGZ4) 15JUN23

Arrival Routes

MIAMI, FLORIDA



NOTE: Chart not to scale.

(NARRATIVE ON FOLLOWING PAGE)

(FROGZ, FROGZ4) 23222

AL-257 (FAA)
Arrival Routes

MIAMI, FLORIDA

FROGZ FOUR ARRIVAL (RNAV)

MIAMI, FLORIDA

ARRIVAL ROUTE DESCRIPTION

LANDING KMIA RUNWAYS 8L/R, 9, 12: From FROGZ on track 118° to cross ARRTT between 9000 and 11000 and at 250K, then on track 118° to cross ASPPN at or below 10000, then on track 118° to cross PBJAY at or above 8000, then on track 118° to SCHAR, then on track 118° to ACERE, then on track 092° to cross LLEGG at 4000. Expect ILS or RNAV Rwy 9 approach or RADAR vectors to final approach course.

LANDING KMIA RUNWAYS 26L/R, 27, 30: From FROGZ on track 116° to cross ENOLE between 14000 and 16000, then on track 116° to HAKUL, then on track 091° to cross VEYGA at or above 13000 and at 250K, then on track 091° to cross SOFAS at or above 11000, then on track 091° to HOLEZ, then on track 123° to cross COTOL at or below 11000, then on track 123° to cross MACYS at or above 8000, then on track 124° to REELN, then on track 124° to cross WNNER at 5000, then on track 124°. Expect RADAR vectors to final approach course.

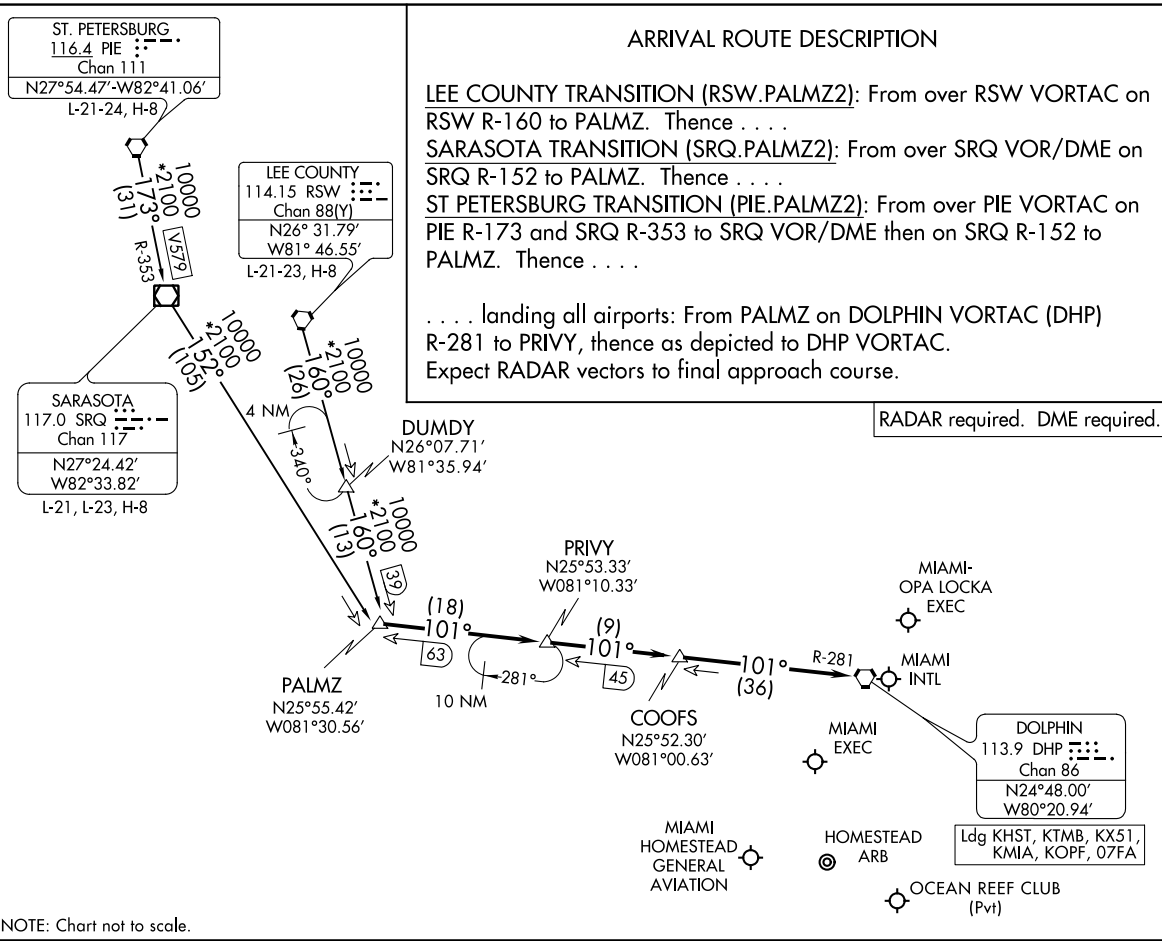
LANDING 07FA/X51/KHST/KTMB: From FROGZ on track 130° to cross HATUG at 9000, then on heading 140°. Expect RADAR vectors to final approach course.

SE-3, 22 FEB 2024 to 21 MAR 2024

SE-3, 22 FEB 2024 to 21 MAR 2024

PALMZ TWO ARRIVAL
(PALMZ.PALMZ2) 02DEC21

MIAMI, FLORIDA



MIAMI APP CON
120.5 350.225
KHST ATIS*
132.275 269.9
MIA D-ATIS
119.15
OPF ATIS
125.9
TMB ATIS
124.0

(PALMZ.PALMZ2) 23222
PALMZ TWO ARRIVAL

MIAMI, FLORIDA

AL-257 (FAA)

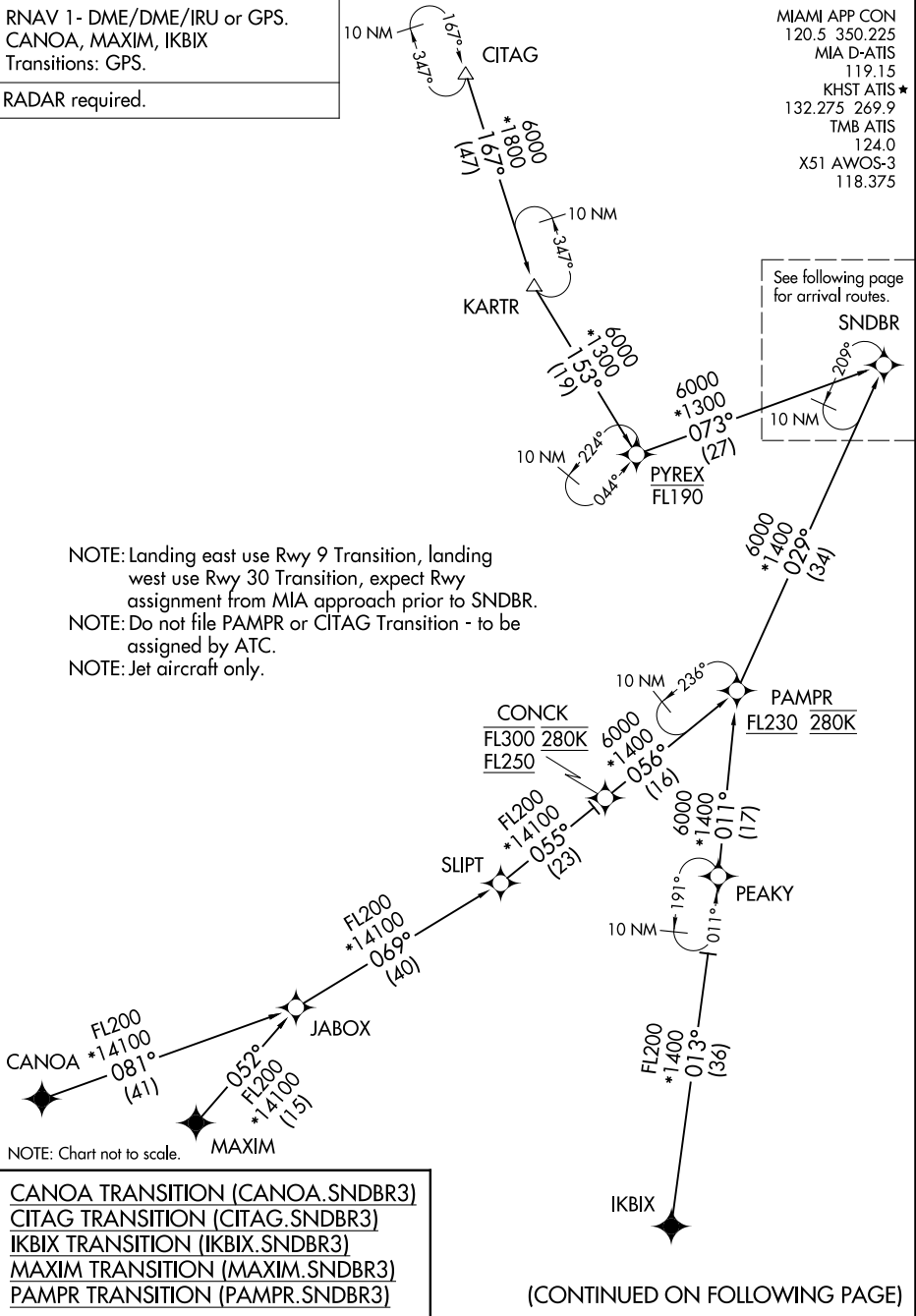
SNDBR THREE ARRIVAL (RNAV) Transition Routes

MIAMI, FLORIDA

RNAV 1 - DME/DME/IRU or GPS.
CANOA, MAXIM, IKBIX
Transitions: GPS.

RADAR required.

MIAMI APP CON
120.5 350.225
MIA D-ATIS
119.15
KHST ATIS *
132.275 269.9
TMB ATIS
124.0
X51 AWOS-3
118.375



NOTE: Landing east use Rwy 9 Transition, landing west use Rwy 30 Transition, expect Rwy assignment from MIA approach prior to SNDBR.
 NOTE: Do not file PAMPR or CITAG Transition - to be assigned by ATC.
 NOTE: Jet aircraft only.

See following page for arrival routes.

SE-3, 22 FEB 2024 to 21 MAR 2024

SE-3, 22 FEB 2024 to 21 MAR 2024

- CANOA TRANSITION (CANOA.SNDBR3)
- CITAG TRANSITION (CITAG.SNDBR3)
- IKBIX TRANSITION (IKBIX.SNDBR3)
- MAXIM TRANSITION (MAXIM.SNDBR3)
- PAMPR TRANSITION (PAMPR.SNDBR3)

(CONTINUED ON FOLLOWING PAGE)

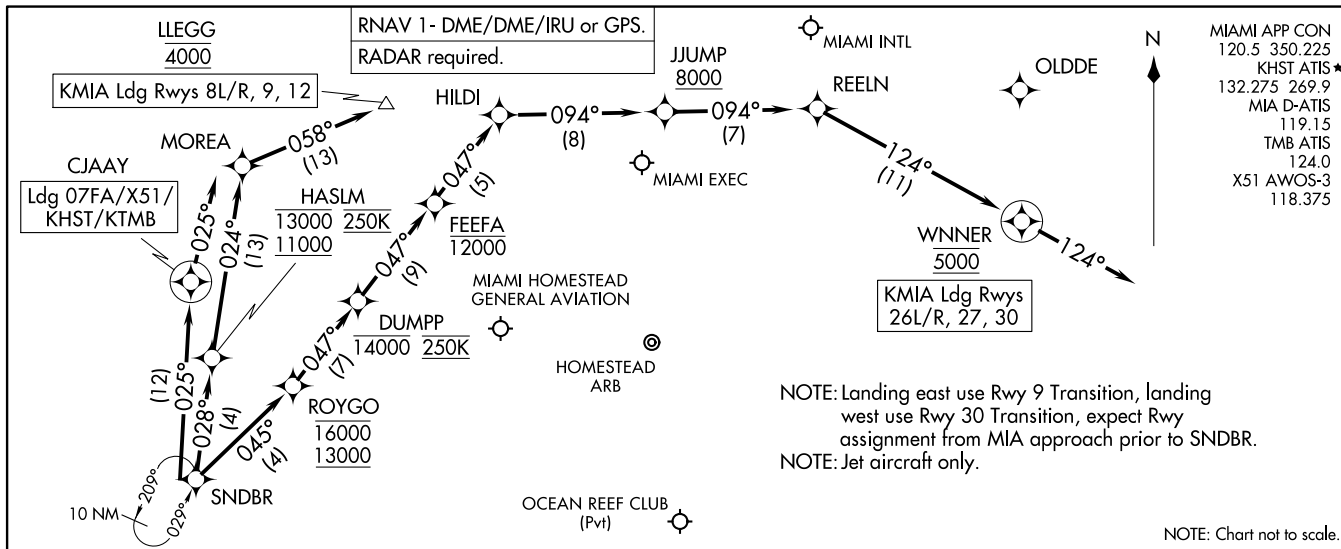
SNDBR THREE ARRIVAL (RNAV) Transition Routes

MIAMI, FLORIDA

(SNDBR.SNDBR3) 29DEC22

SNDBR THREE ARRIVAL (RNAV) Arrival Routes

MIAMI, FLORIDA



(SNDBR.SNDBR3) 23222

SNDBR THREE ARRIVAL (RNAV) Arrival Routes

MIAMI, FLORIDA

AL-257 (FAA)

ARRIVAL ROUTE DESCRIPTION

LANDING KMIA RUNWAYS 8L/R, 9, 12: From SNDBR on track 028° to cross HASLM between 11000 and 13000 and at 250K, then on track 024° to MOREA, then on track 058° to cross LLEGG at 4000. Expect ILS or RNAV Rwy 9 approach or RADAR vectors to final approach course.

LANDING KMIA RUNWAYS 26L/R, 27, 30: From SNDBR on track 045° to cross ROYGO between 13000 and 16000, then on track 047° to cross DUMPP at or below 14000 and at 250K, then on track 047° to cross FEEFA at or below 12000, then on track 047° to HILDI, then on track 094° to cross JJUMP at or above 8000, then on track 094° to REELN, then on track 124° to cross WNNER at 5000, then on track 124°. Expect RADAR vectors to final approach course.

LANDING 07FA/X51/KHST/KTMB: From SNDBR on track 025° to CJAAY, then on track 025°. Expect RADAR vectors to final approach course.

VIICE.VIICE2) 19MAY22

VIICE TWO ARRIVAL (RNAV) Transition Routes

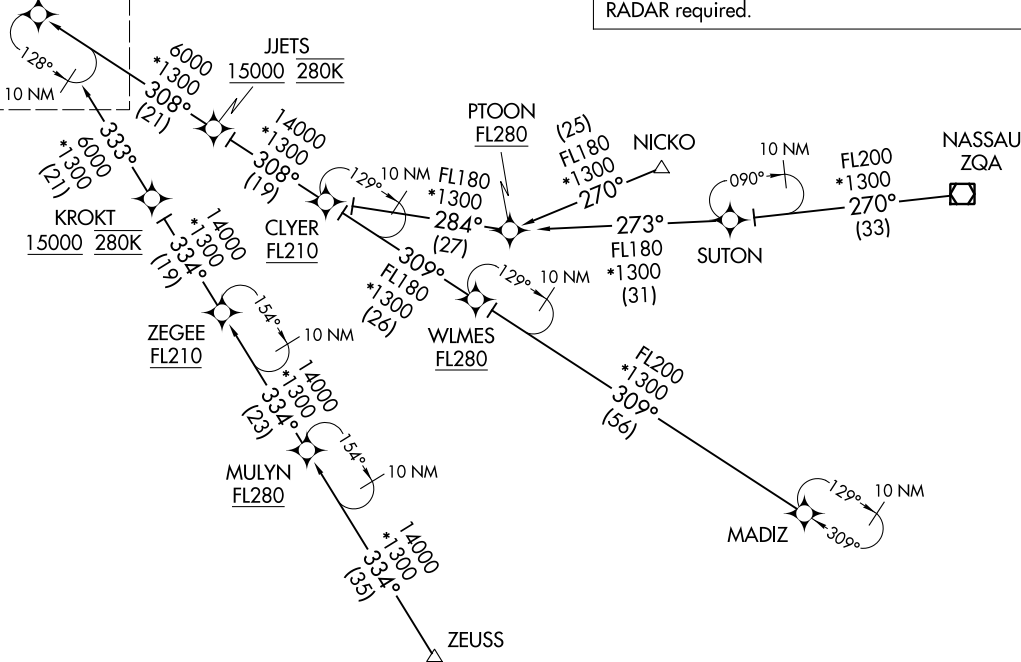
MIAMI, FLORIDA

MIAMI APP CON
120.5 350.225
KHST ATIS ★
132.275 269.9
MIA D-ATIS
119.15
TMB ATIS
124.0
X51 AWOS-3
118.375

See following page for arrival routes.

VIICE
16000

RNAV 1 - DME/DME/IRU or GPS.
ZEUSS, MADIZ, ZQA, NICKO TRANSITION: GPS
RADAR required.



NOTE: Jet aircraft only.
NOTE: Landing east use Rwy 9 Transition, landing west use Rwy 30 Transition. Expect Rwy assignment from MIA approach prior to VIICE.
NOTE: Do not file PTOON or ZEGEE Transition - to be assigned by ATC.

MADIZ TRANSITION (MADIZ.VIICE2)
NASSAU TRANSITION (ZQA.VIICE2)
NICKO TRANSITION (NICKO.VIICE2)
PTOON TRANSITION (PTOON.VIICE2)
ZEGEE TRANSITION (ZEGEE.VIICE2)
ZEUSS TRANSITION (ZEUSS.VIICE2)

(CONTINUED ON FOLLOWING PAGE)

NOTE: Chart not to scale.

VIICE.VIICE2) 22139

Transition Routes

MIAMI, FLORIDA

AL-257 (FAA)

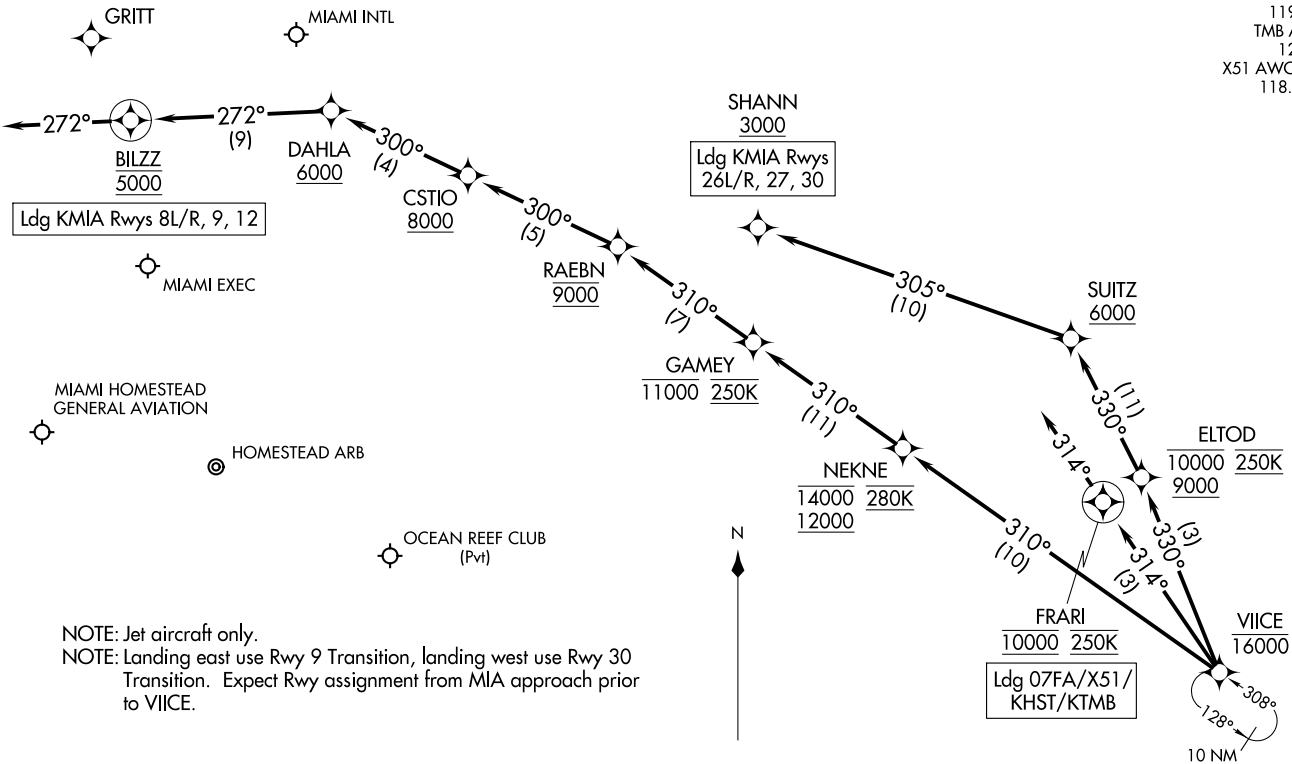
VICE TWO ARRIVAL (RNAV)
(VICE.VICE2) 19MAY22

Arrival Routes

MIAMI, FLORIDA

RNAV 1 - DME/DME/IRU or GPS.
RADAR required.

MIAMI APP CON
120.5 350.225
KHST ATIS ★
132.275 269.9
MIA D-ATIS
119.15
TMB ATIS
124.0
X51 AWOS-3
118.375



(NARRATIVE ON FOLLOWING PAGE)

NOTE: Chart not to scale.

(VICE.VICE2) 23222
VICE TWO ARRIVAL (RNAV)

Arrival Routes

MIAMI, FLORIDA

AL-257 (FAA)

ARRIVAL ROUTE DESCRIPTION

LANDING KMIA RUNWAYS 8L/R, 9, 12: From VIICE on track 310° to cross NEKNE between 12000 and 14000 and at 280K, then on track 310° to cross GAMEY at or below 11000 and at 250K, then on track 310° to cross RAEBN at 9000, then on track 300° to cross CSTIO at or above 8000, then on track 300° to cross DAHLA at or above 6000, then on track 272° to cross BILZZ at 5000, then on track 272°. Expect RADAR vectors to final approach course.

LANDING KMIA RUNWAYS 26L/R, 27, 30: From VIICE on track 330° to cross ELTOD between 9000 and 10000 and at 250K, then on track 330° to cross SUITZ at or above 6000, then on track 305° to cross SHANN at or above 3000. Expect ILS Rwy 30 approach or RADAR vectors to final approach course.

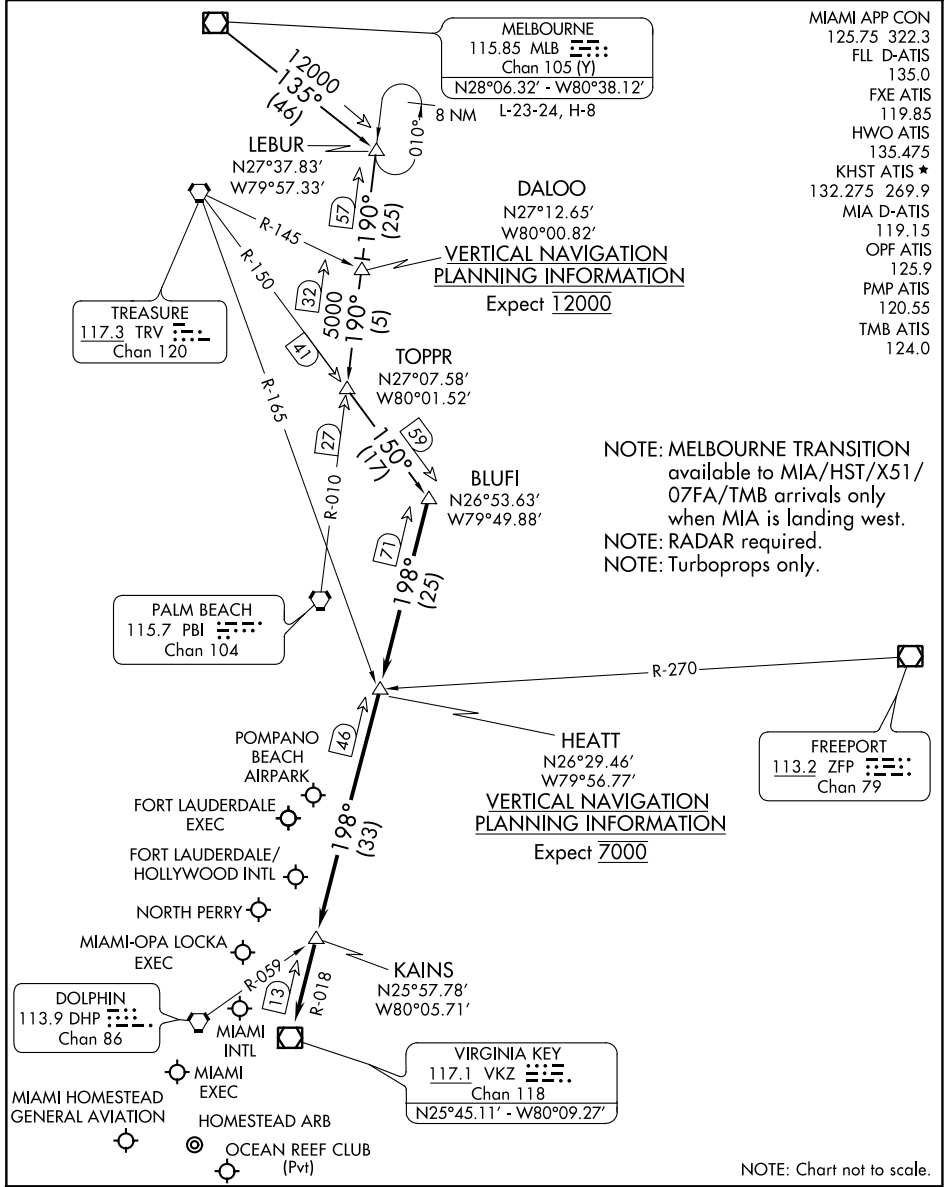
LANDING 07FA/X51/KHST/KTMB: From VIICE on track 314° to cross FRARI at 10000 and at 250K, then on track 314°. Expect RADAR vectors to final approach course.

SE-3, 22 FEB 2024 to 21 MAR 2024

SE-3, 22 FEB 2024 to 21 MAR 2024

BLUF1 FOUR ARRIVAL

FORT LAUDERDALE, FLORIDA



- MIAMI APP CON 125.75 322.3
- FLL D-ATIS 135.0
- FXE ATIS 119.85
- HWO ATIS 135.475
- KHST ATIS ★ 132.275 269.9
- MIA D-ATIS 119.15
- OPF ATIS 125.9
- PMP ATIS 120.55
- TMB ATIS 124.0

NOTE: MELBOURNE TRANSITION available to MIA/HST/X51/07FA/TMB arrivals only when MIA is landing west.
 NOTE: RADAR required.
 NOTE: Turboprops only.

SE-3, 22 FEB 2024 to 21 MAR 2024

SE-3, 22 FEB 2024 to 21 MAR 2024

MELBOURNE TRANSITION (MLB.BLUF14): From over MLB VOR/DME on MLB R-135 to LEBUR INT/MLB 46 DME, then on PBI R-010 to TOPPR INT/PBI 30 DME, then on TRV R-150 to BLUFI INT. Thence . . .
 . . . from over BLUFI INT/VKZ 71 DME on VKZ R-018 to HEATT INT/VKZ 46 DME, then on VKZ R-018 to KAINS INT, then on VKZ R-018 to VKZ VOR/DME. Expect RADAR vectors to final approach course after KAINS INT.

BLUF1 FOUR ARRIVAL

FORT LAUDERDALE, FLORIDA

(TARPN.TARPN3) 22139

TARPN THREE ARRIVAL (RNAV)

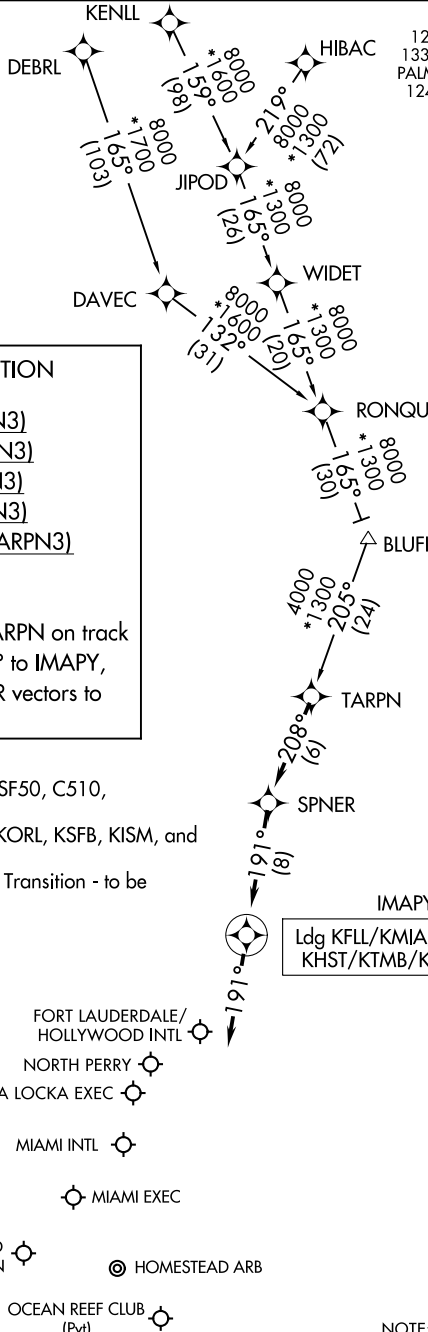
AL-744 (FAA)

FORT LAUDERDALE, FLORIDA

RNAV 1 - DME/DME/IRU or GPS.

RADAR required.

- MIAMI APP CON 126.05 251.1 (9000)
- 133.775 371.9 (7000)
- PALM BEACH APP CON 124.6 317.4 (12000)
- FLL D-ATIS 135.0
- HWO ATIS 135.475
- KHST ATIS* 132.275 269.9
- MIA D-ATIS 119.15
- OPF ATIS 125.9
- TMB ATIS 124.0
- X51 AWOS-3 118.375

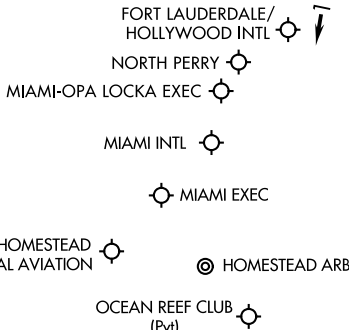


ARRIVAL ROUTE DESCRIPTION

- DEBRL TRANSITION (DEBRL.TARPN3)
- HIBAC TRANSITION (HIBAC.TARPN3)
- JIPOD TRANSITION (JIPOD.TARPN3)
- KENLL TRANSITION (KENLL.TARPN3)
- RONQU TRANSITION (RONQU.TARPN3)

LANDING ALL AIRPORTS: From TARP on track 208° to SPNER, then on track 191° to IMAPY, then on track 191°. Expect RADAR vectors to final approach course.

- NOTE: Turboprop and EA50, E50P, SF50, C510, and C525 aircraft only.
- NOTE: JIPOD Transition for KMCO, KORL, KSFB, KISM, and KLEE departures only.
- NOTE: Do not file DEBRL or RONQU Transition - to be assigned by ATC.



NOTE: Chart not to scale.

TARPN THREE ARRIVAL (RNAV)

(TARPN.TARPN3) 19MAY22

FORT LAUDERDALE, FLORIDA

SE-3, 22 FEB 2024 to 21 MAR 2024

SE-3, 22 FEB 2024 to 21 MAR 2024