

| | | |
|--|------------------------|---|
| WAAS CH 50416 W02A | APP CRS 020° | Rwy Idg 6100 TDZE 3786 Apt Elev 3788 |
|--|------------------------|---|

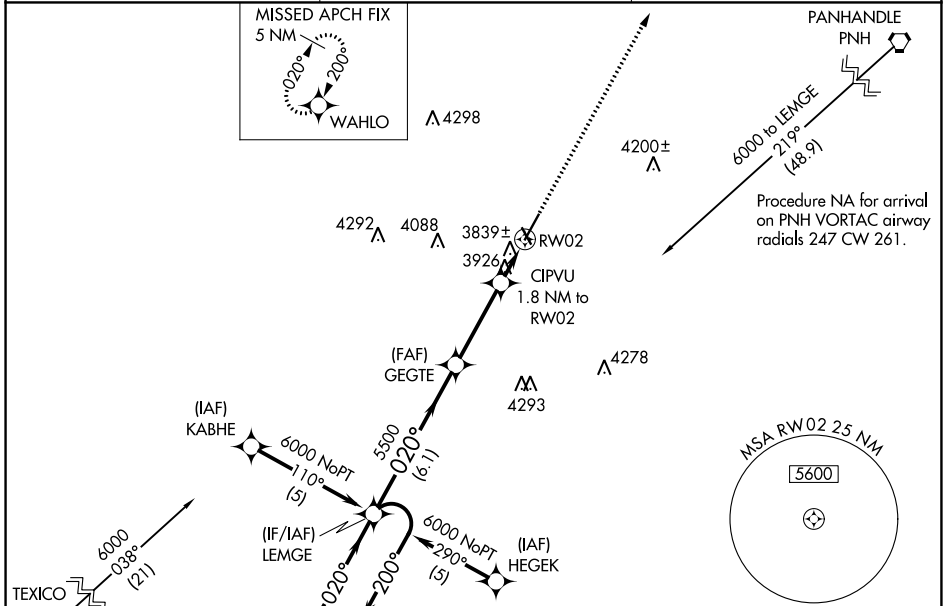
RNAV (GPS) RWY 2

HEREFORD MUNI (HR.X)

▼ For uncompensated Baro-VNAV systems, LNAV/VNAV NA below -22°C (-7°F) or above 41°C (105°F).
 ▲ DME/DME RNP-0.3 NA. When local altimeter setting not received, use Rick Husband Amarillo Intl altimeter setting: Increase LPV DA to 4098 feet and all Cats visibility ¼ SM, increase LNAV/VNAV DA to 4238 feet and all Cats visibility ¼ SM, increase all MDA 120 feet; increase LNAV Cats C/D visibility ¼ SM, increase Circling Cat C visibility ½ SM and Cat D visibility ¼ SM. Baro-VNAV NA when using Rick Husband Amarillo Intl altimeter setting. VDP NA with Rick Husband Amarillo Intl altimeter setting.

MISSED APPROACH:
Climb to 6000 direct WAHLO and hold.

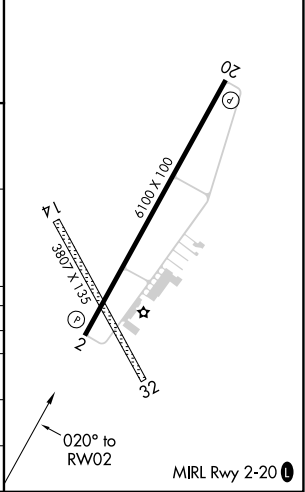
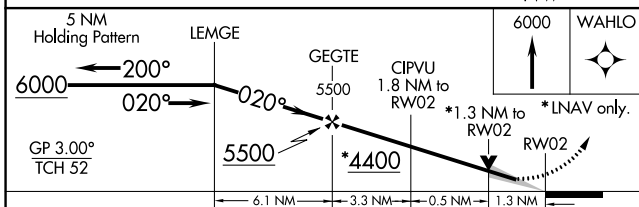
| | | |
|-------------------------|--|---------------------------------|
| AWOS-3 118.05 | AMARILLO APP CON ★ 119.5 307.0 | UNICOM 122.8 (CTAF) 0 |
|-------------------------|--|---------------------------------|



SC-2, 22 FEB 2024 to 21 MAR 2024

SC-2, 22 FEB 2024 to 21 MAR 2024

| | |
|-----------|-----------|
| ELEV 3788 | TDZE 3786 |
|-----------|-----------|



| CATEGORY | A | B | C | D |
|--------------|----------------------------|-------------|-------------------------------|-------------------------------|
| LPV DA | 3986-3/4 200 (200-3/4) | | | |
| LNAV/DA VNAV | 4126-1 1/4 340 (400-1 1/4) | | | |
| LNAV MDA | 4240-1 | 454 (500-1) | 4240-1 1/4 454 (500-1 1/4) | 4240-1 1/2 454 (500-1 1/2) |
| CIRCLING | 4280-1 | 492 (500-1) | 4440-1 3/4 652 (700-1 3/4) | 4620-2 3/4 832 (900-2 3/4) |

| | | |
|--|------------------------|---|
| WAAS CH 61216 W20A | APP CRS 200° | Rwy Idg 6100 TDZE 3786 Apt Elev 3788 |
|--|------------------------|---|

RNAV (GPS) RWY 20

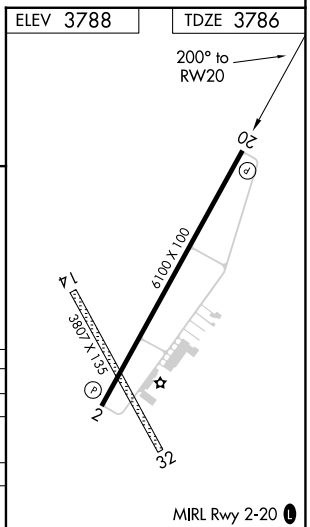
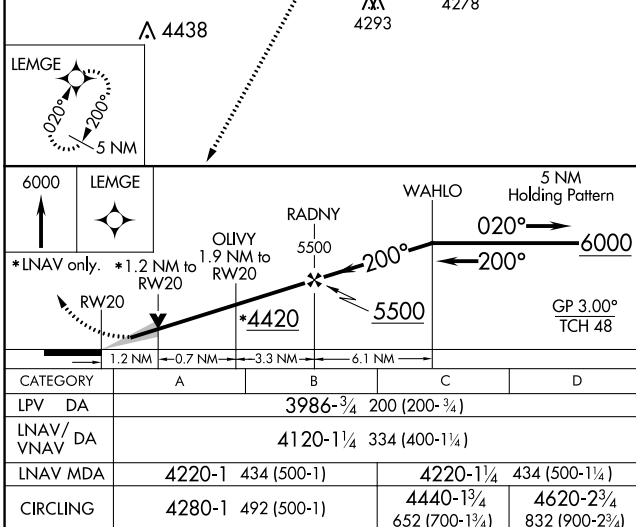
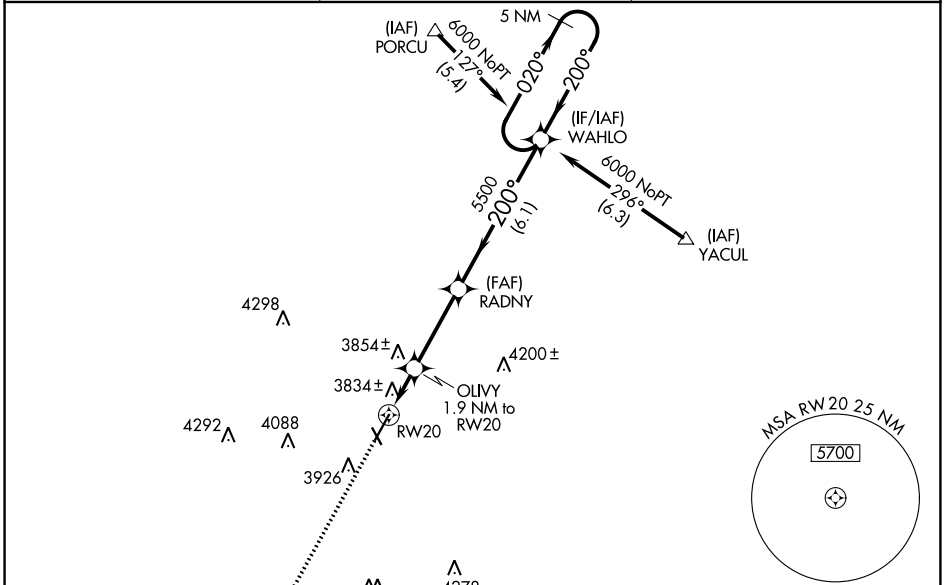
HEREFORD MUNI (HR.X)

RNP APCH.

▼ For uncompensated Baro-VNAV systems, LNAV/VNAV NA below -22°C (-7°F) or above 41°C (105°F).
 ▲ When local altimeter setting not received, use Rick Husband Amarillo Intl altimeter setting: Increase LPV DA to 4098 feet and all Cats visibility ¼ SM, increase LNAV/VNAV DA to 4232 feet and all Cats visibility ¼ SM, increase all MDA 120 feet; increase LNAV Cats C/D visibility ½ SM, increase Circling Cat C visibility ½ SM and Cat D visibility ¼ SM. Baro-VNAV NA when using Rick Husband Amarillo Intl altimeter setting. VDP NA with Rick Husband Amarillo Intl altimeter setting.

MISSED APPROACH:
Climb to 6000 direct LEMGE and hold.

| | | |
|-------------------------|--|---------------------------------|
| AWOS-3 118.05 | AMARILLO APP CON ★ 119.5 307.0 | UNICOM 122.8 (CTAF) ① |
|-------------------------|--|---------------------------------|



SC-2, 22 FEB 2024 to 21 MAR 2024

SC-2, 22 FEB 2024 to 21 MAR 2024