

HELNS SIX ARRIVAL

AL-330 (FAA)

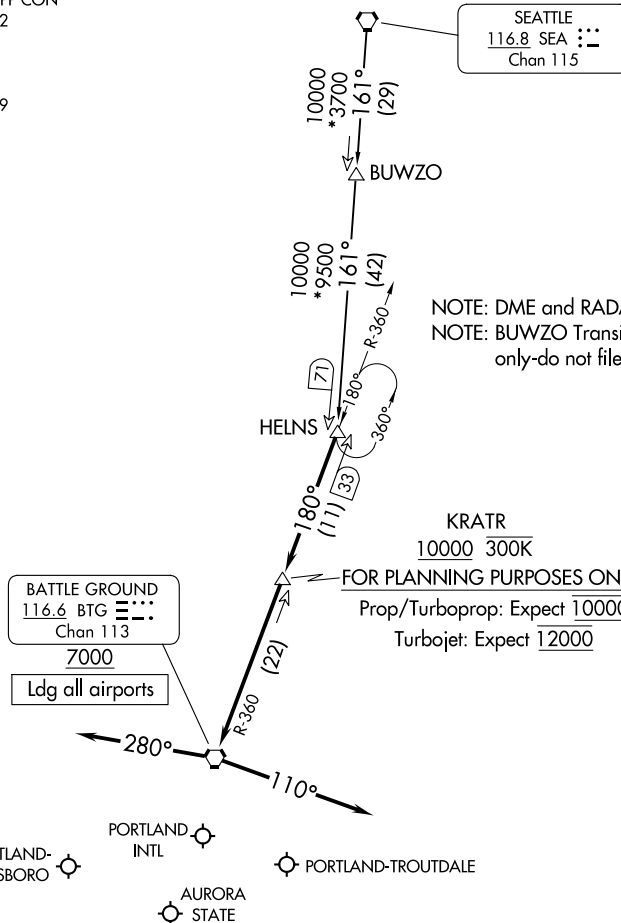
PORTLAND, OREGON

PORTLAND APP CON
124.35 299.2
HIO ATIS
127.65
PDX D-ATIS
128.35 269.9

SEATTLE
116.8 SEA
Chan 115

NW-1, 22 FEB 2024 to 21 MAR 2024

NW-1, 22 FEB 2024 to 21 MAR 2024



NOTE: Chart not to scale.

ARRIVAL ROUTE DESCRIPTION

BUWZO TRANSITION (BUWZO.HELNS6): From over BUWZO via SEA R-161 to HELNS. Thence. . . .

SEATTLE TRANSITION (SEA.HELNS6): From over SEA VORTAC via SEA R-161 to HELNS. Thence. . . .

. . . . from over HELNS on BTG VORTAC R-360 to cross KRATR at or above 10000, then as depicted to cross BTG VORTAC at or above 7000.

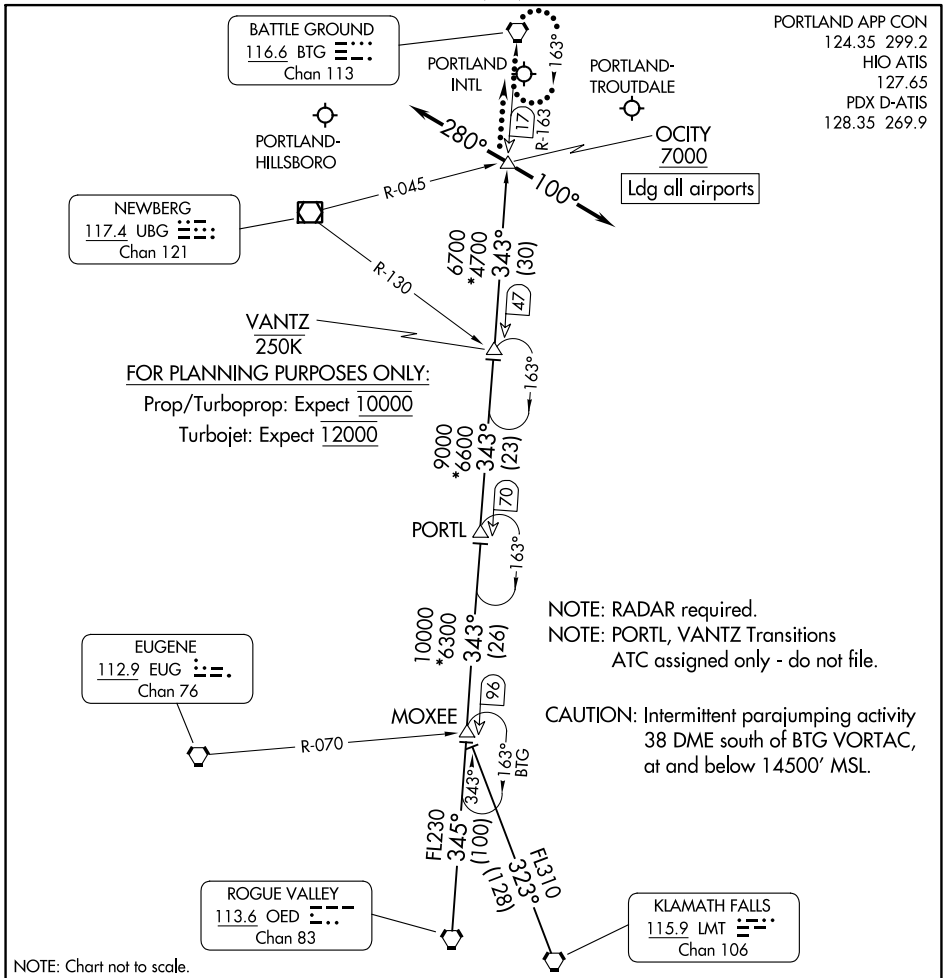
LANDING EAST: From BTG VORTAC heading 280°, expect RADAR vectors to final approach course.

LANDING WEST: From BTG VORTAC heading 110°, expect RADAR vectors to final approach course.

HELNS SIX ARRIVAL

PORTLAND, OREGON

OCITY THREE ARRIVAL



NOTE: Chart not to scale.

ARRIVAL ROUTE DESCRIPTION

- KLAMATH FALLS TRANSITION (LMT.OCITY3):** From over LMT VORTAC on LMT R-323 to MOXEE, then on BTG R-163 to OCITY. Thence. . .
- MOXEE TRANSITION (MOXEE.OCITY3):** From over MOXEE on BTG R-163 to OCITY. Thence. . .
- ROGUE VALLEY TRANSITION (OED.OCITY3):** From over OED VORTAC on OED R-345 to MOXEE, then on BTG R-163 to OCITY. Thence. . .
- PORTL TRANSITION (PORTL.OCITY3):** From over PORTL on BTG R -163 to OCITY. Thence. . .
- VANTZ TRANSITION (VANTZ.OCITY3):** From over VANTZ on BTG R-163 to OCITY. Thence. . .
- LANDING EAST:** From OCITY heading 280°, expect RADAR vectors to final approach course.
- LANDING WEST:** From OCITY heading 100°, expect RADAR vectors to final approach course.
- LOST COMMUNICATIONS:** After OCITY, proceed direct BTG VORTAC and hold.

OCITY THREE ARRIVAL

NW-1, 22 FEB 2024 to 21 MAR 2024

NW-1, 22 FEB 2024 to 21 MAR 2024