

WAAS CH <b>48837</b> <b>W22A</b>	APP CRS <b>218°</b>	Rwy Idg TDZE <b>2382</b> Apt Elev <b>2396</b>
--	------------------------	---

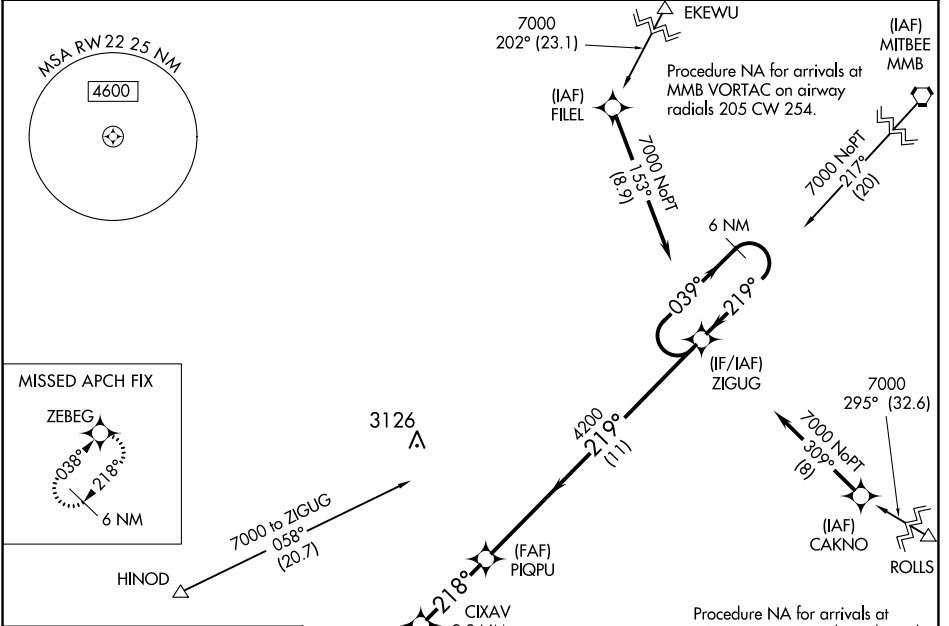
# RNAV (GPS) RWY 22

HEMPHILL COUNTY (HHF)

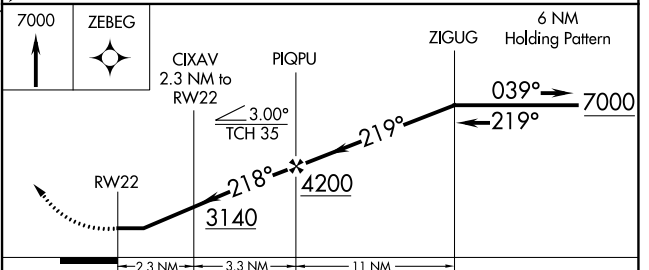
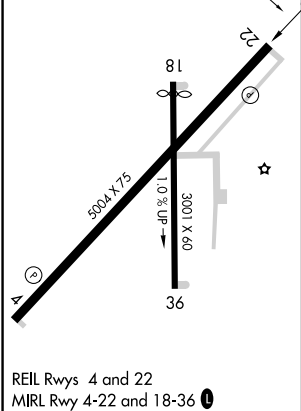
**⚠** DME/DME RNP-0.3 NA. When local altimeter setting not received, use Gage altimeter setting and increase all MDA 120 feet, increase LP and LNAV visibility Cat C and D 3/8 mile and Circling Cat C 1/2 mile. Helicopter visibility reduction below 3/4 SM NA. Circling Rwy 18, 36 NA at night.

**⚠** MISSED APPROACH: Climb to 7000 direct ZEBEG and hold, continue climb-in-hold to 7000.

AWOS-3 <b>119.025</b>	ALBUQUERQUE CENTER <b>127.85 285.475</b>	KANSAS CITY CENTER <b>126.95 379.2</b>	CTAF <b>122.9</b>
--------------------------	---	---	----------------------



ELEV 2396	TDZE 2382
-----------	-----------



CATEGORY	A	B	C	D
LP MDA	2800-1	418 (500-1)	2800-1 1/8	418 (500-1 1/8)
LNAV MDA	2860-1	478 (500-1)	2860-1 1/8	478 (500-1 1/8)
<b>C</b> CIRCLING	3040-1	644 (700-1)	3280-2 3/4 884 (900-2 3/4)	3340-3 944 (1000-3)

WAAS CH <b>42637</b> <b>W04A</b>	APP CRS <b>038°</b>	Rwy Idg TDZE Apt Elev	<b>5004</b> <b>2387</b> <b>2396</b>
--	------------------------	-----------------------------	---

# RNAV (GPS) RWY 4

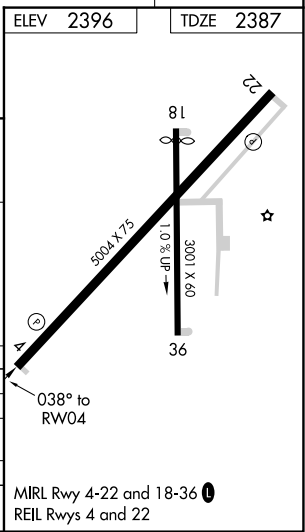
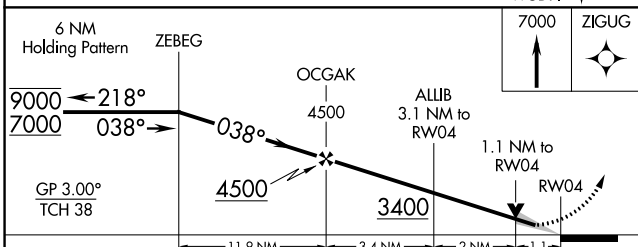
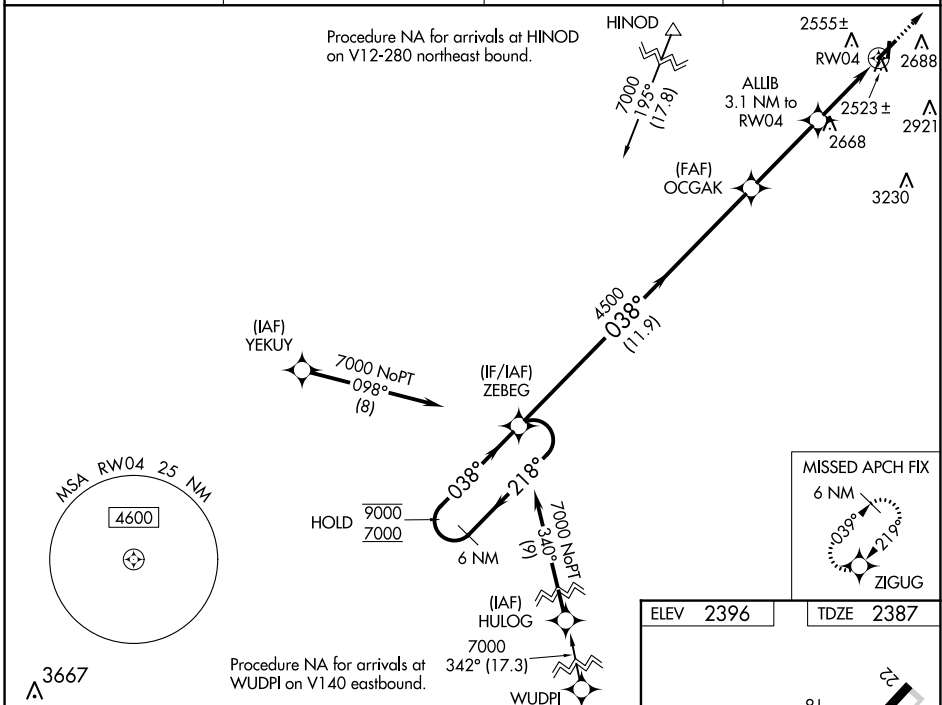
HEMPHILL COUNTY (HHF)

RNP APCH - GPS.

**⚠** Circling NA to Rws 18 and 36. For uncompensated Baro-VNAV systems, LNAV/VNAV NA below -19°C or above 54°C. When local altimeter setting not received, use Gage altimeter setting and increase LPV DA to 2751; increase LNAV/VNAV DA to 2798 feet and all visibilities  $\frac{3}{8}$  SM. Increase all MDAs to 120 feet and LNAV visibility Cat C/D  $\frac{1}{4}$  SM, and Circling visibility Cat C  $\frac{1}{4}$  SM. VDP and Baro-VNAV NA when using Gage altimeter setting.

**⚠** MISSED APPROACH: Climb to 7000 direct ZIGUG and hold, continue climb-in-hold to 7000.

AWOS-3 <b>119.025</b>	ALBUQUERQUE CENTER <b>127.85 285.475</b>	KANSAS CITY CENTER <b>126.95 379.2</b>	CTAF <b>122.9</b>
--------------------------	---	---	----------------------



CATEGORY	A	B	C	D
LPV DA		2637-1	250 (300-1)	
LNAV/VNAV DA		2684-1	297 (300-1)	
LNAV MDA	2780-1	393 (400-1)	2780-1 $\frac{1}{8}$	393 (400-1 $\frac{1}{8}$ )
CIRCLING	3040-1	644 (700-1)	3280-2 $\frac{3}{4}$ 884 (900-2 $\frac{3}{4}$ )	3340-3 944 (1000-3)

SC-2, 22 FEB 2024 to 21 MAR 2024

SC-2, 22 FEB 2024 to 21 MAR 2024