

WAAS CH <b>99742</b>	APP CRS <b>122°</b>	Rwy ldg TDZE Apt Elev	<b>4248</b> <b>59</b> <b>66</b>
<b>W12A</b>			

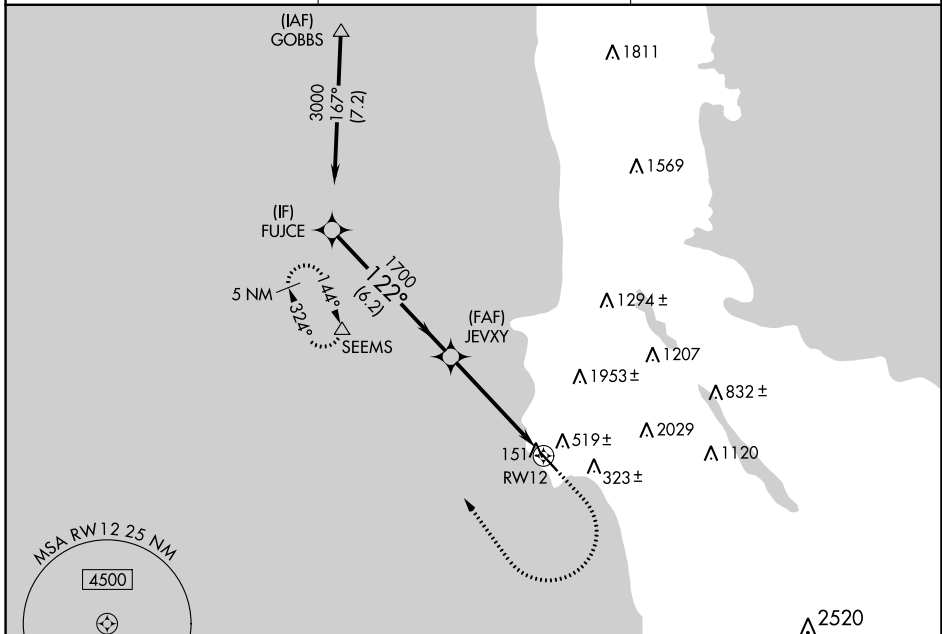
# RNAV (GPS) RWY 12

HALF MOON BAY (HAF')

RNP APCH.  
 ▼ Rwy 12 helicopter visibility reduction below 3/4 SM NA. For uncompensated Baro-VNAV systems, LNAV/VNAV NA below -15° C or above 54° C.

MISSED APPROACH: Climb to 700 then climbing right turn to 4000 direct SEEMS and hold, continue climb-in-hold to 4000.

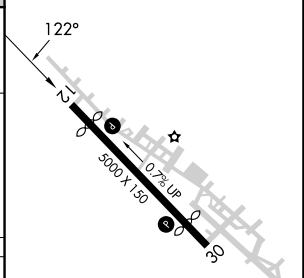
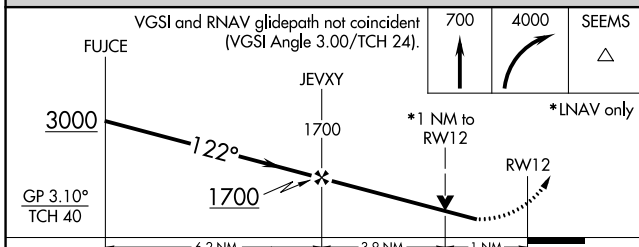
AWOS <b>127.275</b>	NORCAL APP CON <b>135.1 307.2</b>	UNICOM <b>122.8 (CTAF)</b> <b>0</b>
------------------------	--------------------------------------	--



SW-2, 22 FEB 2024 to 21 MAR 2024

SW-2, 22 FEB 2024 to 21 MAR 2024

ELEV <b>66</b>	TDZE <b>59</b>
----------------	----------------



CATEGORY	A	B	C	D
LPV DA	360-7/8		301 (300-7/8)	
LNAV/VNAV DA	652-1 3/4		593 (600-1 3/4)	
LNAV MDA	660-1	601 (600-1)	660-1 3/4	601 (600-1 3/4)

REIL Rwy 30 **0**  
 MIRL Rwy 12-30 **0**

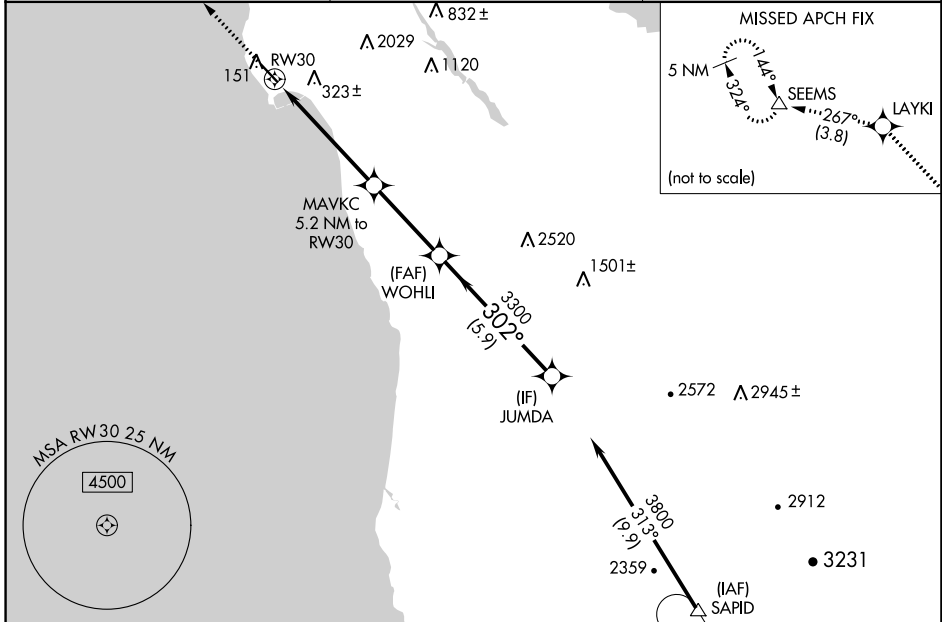
WAAS CH <b>50302</b> <b>W30A</b>	APP CRS <b>302°</b>	Rwy Idg TDZE Apt Elev	<b>4238</b> <b>54</b> <b>66</b>
--	------------------------	-----------------------------	---------------------------------------

# RNAV (GPS) RWY 30

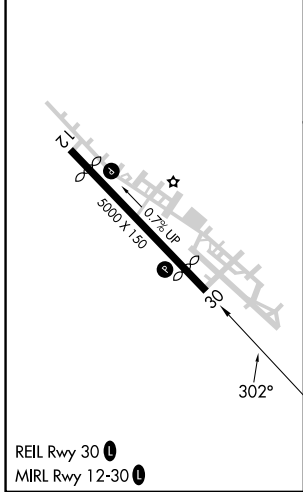
HALF MOON BAY (HAF')

RNP APCH.	MISSED APPROACH: Climb to 4000 direct LAYKI and on track 267° to SEEMS and hold, continue climb-in-hold to 4000.
-----------	--

AWOS-3 <b>127.275</b>	NORCAL APP CON <b>135.1 307.2</b>	UNICOM <b>122.8 (CTAF)</b>
--------------------------	--------------------------------------	-------------------------------



ELEV 66	TDZE 54
---------	---------



4000	LAYKI	tr 267°	SEEMS	VGSi and RNAV glidepath not coincident (VGSi Angle 3.00°/TCH 24).			
*LNAV only		MAVKC 5.2 NM to RW30		JUMDA			
RW30		3300		WOHLI		3800	
1.8 NM		3.4 NM		3.4 NM		5.9 NM	
2020*		302°		3300		GP 3.50° TCH 40	
CATEGORY	A	B	C	D			
LPV DA	381-1 327 (400-1)						
LNAV MDA	620-1 566 (600-1)			620-1½ 566 (600-1½)			

SW-2, 22 FEB 2024 to 21 MAR 2024

SW-2, 22 FEB 2024 to 21 MAR 2024