

APP CRS	Rwly Idg	5005
008°	TDZE	253
	Apt Elev	259

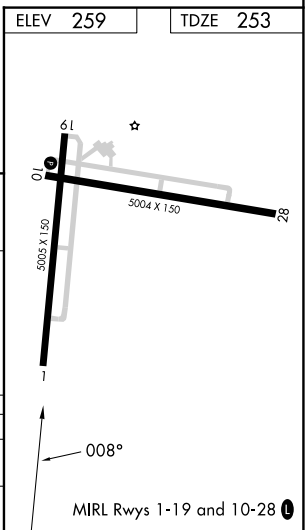
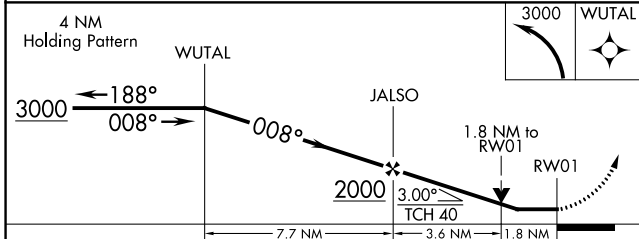
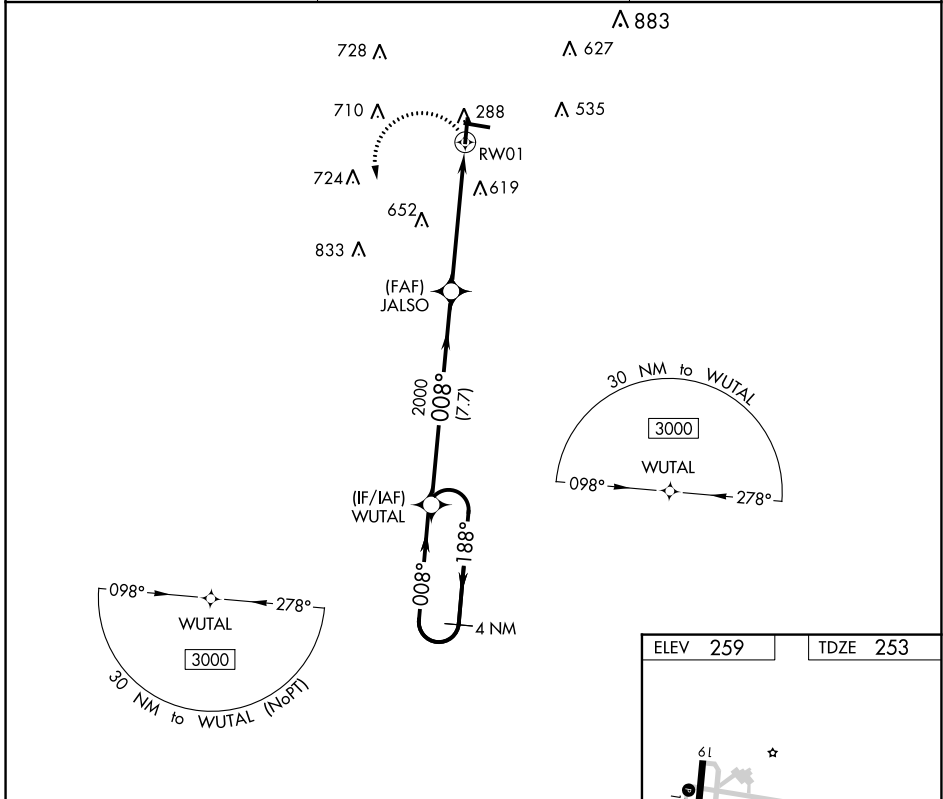
RNAV (GPS) RWY 1

EVERGREEN RGNL/MIDDLETON FLD (GZH)

⚠ DME/DME RNP-0.3 NA. When local altimeter setting not received, use Andalusia/Opp altimeter setting and increase all MDAs 100 feet and visibility Cat C/D ½ SM. Rwy 1 helicopter visibility reduction below ¾ SM NA. Circling Rwy 10, 19 NA at night.

⚠ MISSED APPROACH: Climbing left turn to 3000 direct WUTAL and hold.

ASOS 133,425	JACKSONVILLE CENTER 134.15 338.3	UNICOM 122.7 (CTAF) 0
------------------------	--	---------------------------------



CATEGORY	A	B	C	D
LNVA MDA	880-1	627 (700-1)	880-1¾	627 (700-1¾)
CIRCLING	880-1	621 (700-1)	980-2 721 (800-2)	1080-2¾ 821 (900-2¾)

SE-4, 22 FEB 2024 to 21 MAR 2024

SE-4, 22 FEB 2024 to 21 MAR 2024

WAAS CH 50332 W10A	APP CRS 102°	Rwy Idg 5004 TDZE 259 Apt Elev 259
--	------------------------	---

RNAV (GPS) RWY 10

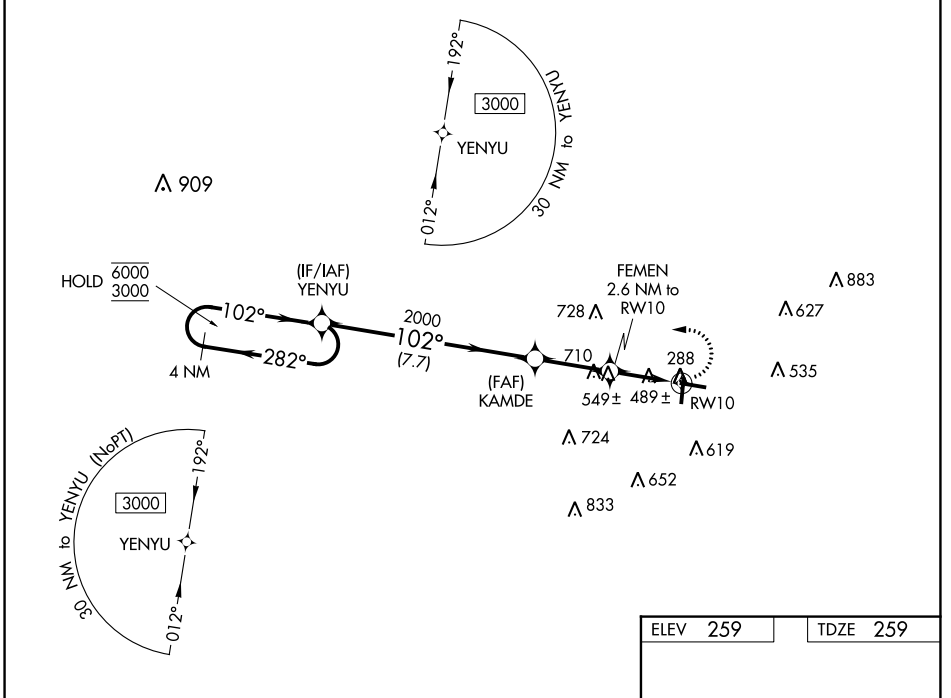
EVERGREEN RGNL/MIDDLETON FLD (GZH)

RNP APCH.

▼ Rwy 10 helicopter visibility reduction below 1 SM NA. When local altimeter setting not received, use
 ▲ Andalusia/Opp altimeter setting and increase all MDAs 100 feet, and visibility LP Cat C/D 3/8 SM, LNAV Cat C/D 1/4 SM, Circling Cat C 1/2 SM and Circling Cat D 1/4 SM. Straight-in Rwy 10 NA at night, Circling Rwy 10, 19 NA at night.

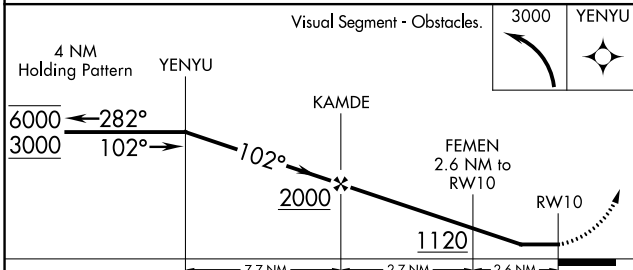
MISSED APPROACH:
 Climbing left turn to 3000 direct YENYU and hold.

ASOS 133.425	JACKSONVILLE CENTER 134.15 338.3	UNICOM 122.7 (CTAF)
------------------------	--	-------------------------------



SE-4, 22 FEB 2024 to 21 MAR 2024

SE-4, 22 FEB 2024 to 21 MAR 2024



ELEV 259	TDZE 259
----------	----------

CATEGORY	A	B	C	D
LP MDA	740-1	481 (500-1)	740-1 3/8	481 (500-1 3/8)
LNAV MDA	800-1	541 (600-1)	800-1 5/8	541 (600-1 5/8)
CIRCLING	800-1 541 (600-1)	840-1 581 (600-1)	980-2 721 (800-2)	1080-2 3/4 821 (900-2 3/4)

MIRL Rwy 1-19 and 10-28

WAAS CH 56432 W19A	APP CRS 188°	Rwy Idg 5005 TDZE 258 Apt Elev 259
--	------------------------	---

RNAV (GPS) RWY 19

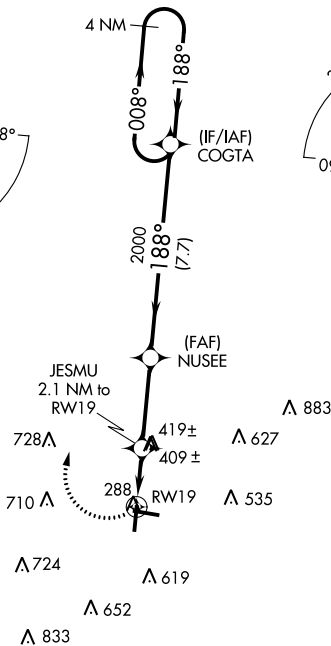
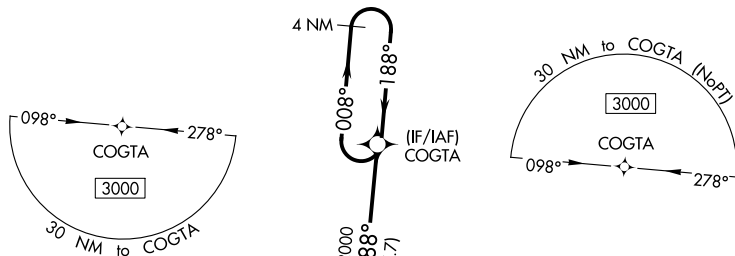
EVERGREEN RGNL/MIDDLETON FLD (GZH)

⚠ DME/DME RNP-0.3 NA. When local altimeter setting not received, use Andalusia/Opp altimeter setting and increase all MDAs 100 feet and visibility Cat C/D ½ SM.
⚠ Rwy 19 helicopter visibility reduction below 1 SM NA. Straight-in Rwy 19 NA at night, Circling Rwy 10, 19 NA at night.

MISSED APPROACH:
Climbing right turn to 3000 direct COGTA and hold.

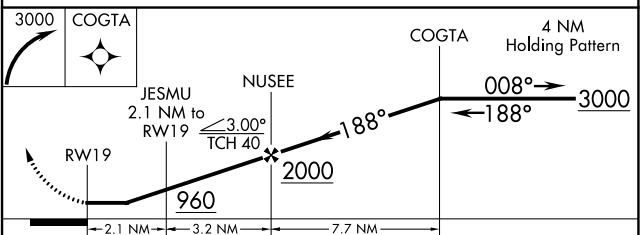
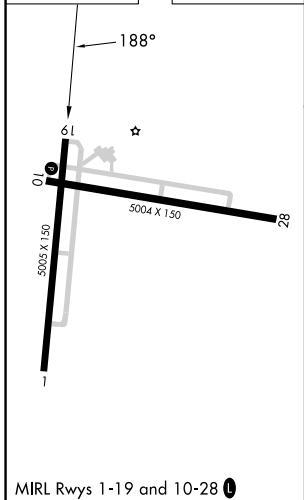
ASOS 133.425	JACKSONVILLE CENTER 134.15 338.3	UNICOM 122.7 (CTAF) 0
------------------------	--	---------------------------------

⚠ 892



SE-4, 22 FEB 2024 to 21 MAR 2024

ELEV 259	TDZE 258
-----------------	-----------------



CATEGORY	A	B	C	D
LP MDA	660-1	402 (500-1)	660-1½	402 (500-1½)
LNAV MDA	680-1	422 (500-1)	680-1¼	422 (500-1¼)
CIRCLING	800-1 541 (600-1)	840-1 581 (600-1)	980-2 721 (800-2)	1080-2¾ 821 (900-2¾)

SE-4, 22 FEB 2024 to 21 MAR 2024

APP CRS	Rwy Idg	5004
283°	TDZE	249
	Apt Elev	259

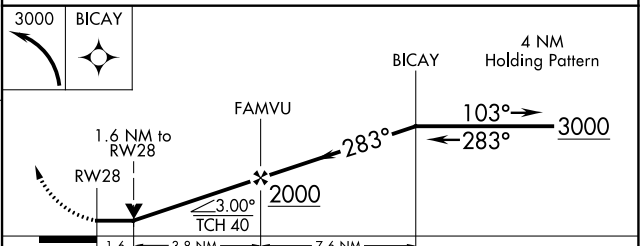
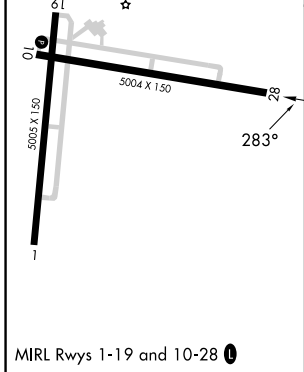
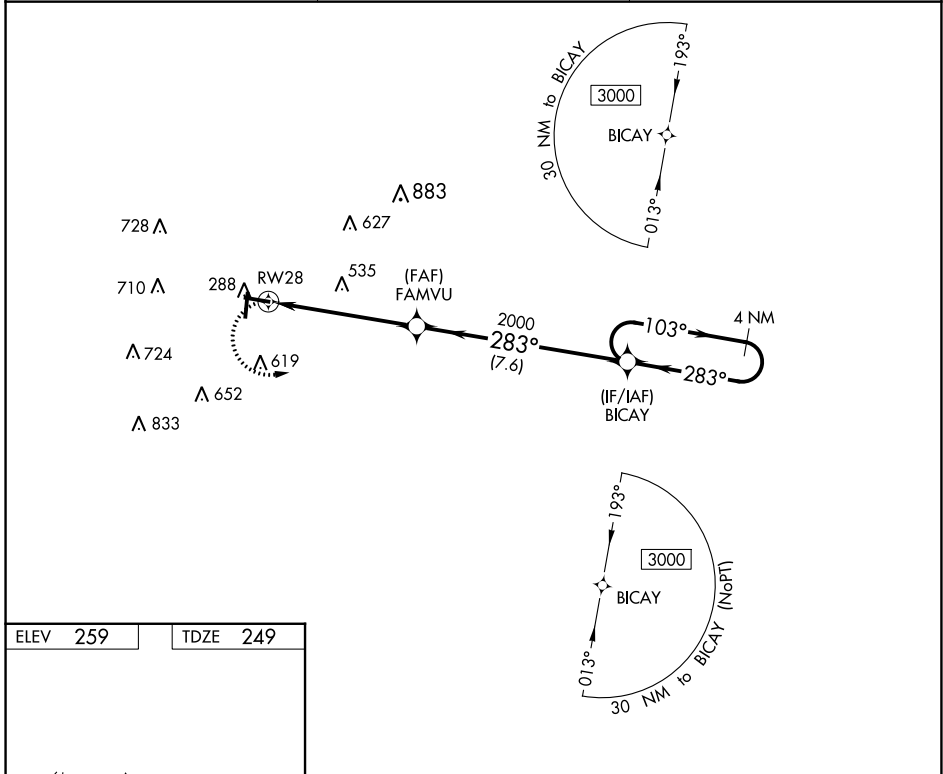
RNAV (GPS) RWY 28

EVERGREEN RGNL/MIDDLETON FLD (GZH)

⚠ DME/DME RNP-0.3 NA. When local altimeter setting not received, use Andalusia/Opp altimeter setting and increase all MDAs 100 feet and visibility Cat C/D ½ SM.
 Rwy 28 helicopter visibility reduction below ¾ SM NA. Circling Rwy 10, 19 NA at night.

MISSED APPROACH:
 Climbing left turn to 3000
 direct BICAY and hold.

ASOS 133.425	JACKSONVILLE CENTER 134.15 338.3	UNICOM 122.7 (CTAF) 0
------------------------	--	---------------------------------



CATEGORY	A	B	C	D
LNAV MDA	800-1	551 (600-1)	800-1½	551 (600-1½)
CIRCLING	800-1 541 (600-1)	840-1 581 (600-1)	980-2 721 (800-2)	1080-2¾ 821 (900-2¾)

SE-4, 22 FEB 2024 to 21 MAR 2024

SE-4, 22 FEB 2024 to 21 MAR 2024

VORTAC MVC	APP CRS	Rwy Idg	5004
116.8	095°	TDZE	259
Chan 115		Apt Elev	259

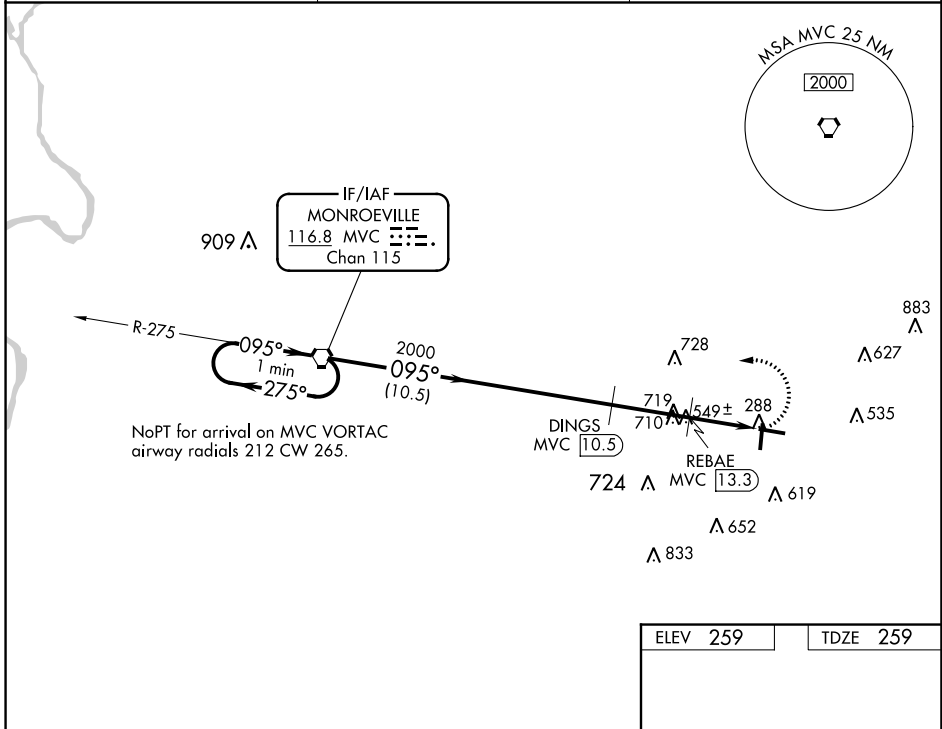
VOR/DME RWY 10

EVERGREEN RGNL/MIDDLETON FLD (GZH)

⚠ When local altimeter setting not received, use Andalusia/Opp altimeter setting and increase all MDAs 100 feet and visibility Cat C/D ½ SM. DME required. Rwy 10 helicopter visibility reduction below 1 SM NA. Straight-in Rwy 10 NA at night, Circling Rwy 10, 19 NA at night.

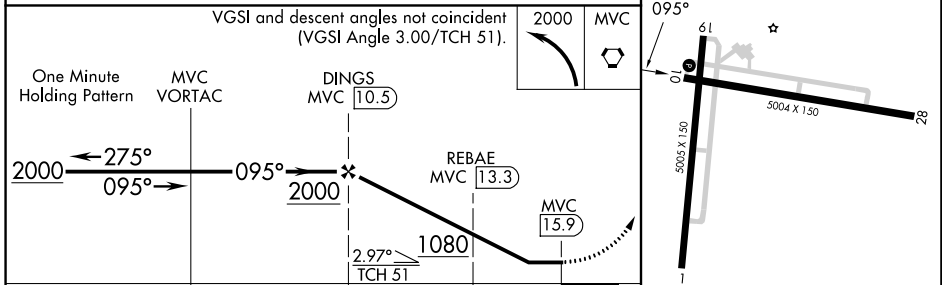
⚠ MISSED APPROACH: Climbing left turn to 2000 direct MVC VORTAC and hold.

ASOS 133.425	JACKSONVILLE CENTER 134.15 338.3	UNICOM 122.7 (CTAF) 0
------------------------	--	---------------------------------

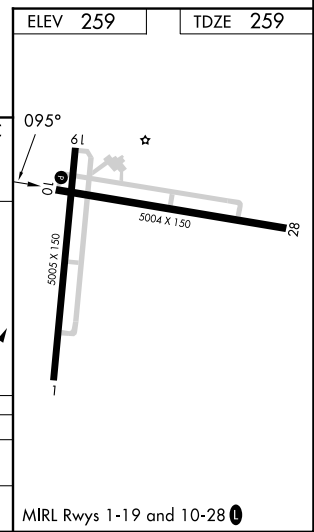


SE-4, 22 FEB 2024 to 21 MAR 2024

SE-4, 22 FEB 2024 to 21 MAR 2024



CATEGORY	A	B	C	D
S-10	800-1	541 (600-1)	800-1 $\frac{5}{8}$	541 (600-1 $\frac{5}{8}$)
CIRCLING	800-1 541 (600-1)	840-1 581 (600-1)	980-2 721 (800-2)	1080-2 $\frac{3}{4}$ 821 (900-2 $\frac{3}{4}$)



MIRL Rwy 1-19 and 10-28 0