

NDB GYG 359	APP CRS 142°	Rwy Idg TDZE Apt Elev	5005 1154 1158
-----------------------	------------------------	-----------------------------	---

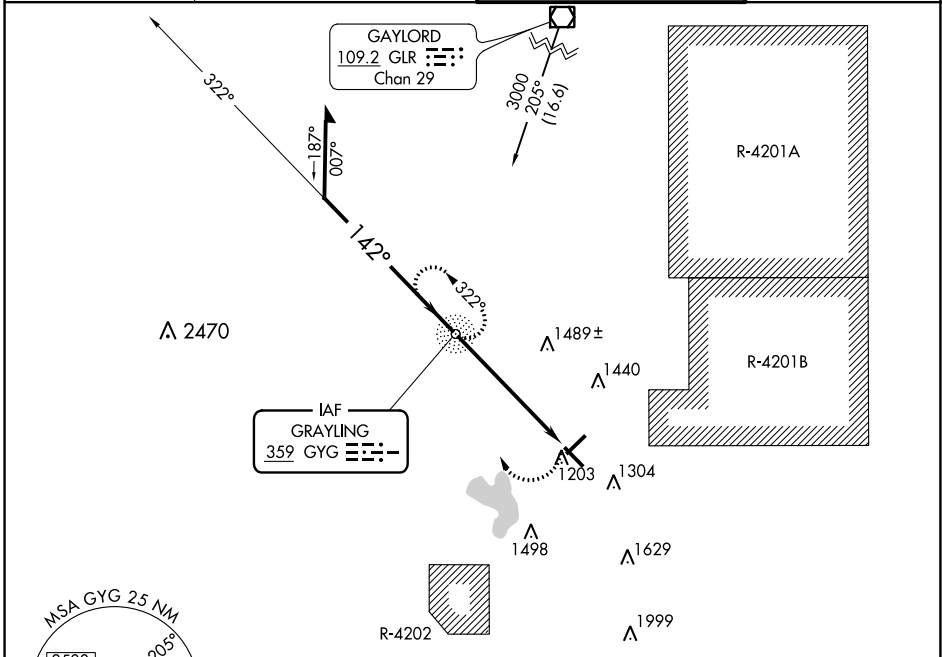
NDB RWY 14

GRAYLING AAF (GOV)

⚠ Circling Rwy 5, 23, 32 NA at night. Rwy 14 helicopter visibility reduction below 3/4 SM NA.
⚠ NA When local altimeter setting not received, use Houghton Lake altimeter setting and increase all MDAs 60 feet and visibility Cat B/C/D 1/2 SM.

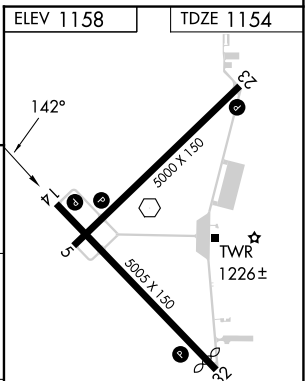
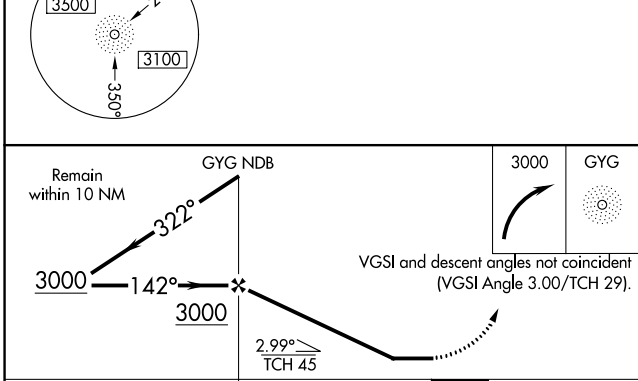
MISSED APPROACH:
Climbing right turn to 3000 direct GYG NDB and hold.

ATIS 119.075	MINNEAPOLIS CENTER 125.475 269.45	GRAYLING TOWER ★ 126.2 (CTAF) 0	GND CON 121.9
------------------------	---	---	-------------------------



EC-1, 22 FEB 2024 to 21 MAR 2024

EC-1, 22 FEB 2024 to 21 MAR 2024



CATEGORY	A	B	C	D
S-14	1880-1	726 (800-1)	1880-2 726 (800-2)	1880-2 1/4 726 (800-2 1/4)
CIRCLING	1880-1	722 (800-1)	1880-2 722 (800-2)	1960-2 1/2 802 (900-2 1/2)

REIL Rwys 5, 23, 14 and 32
MRL Rwy 5-23 and 14-32

FAF to MAP 5.7 NM

Knots	60	90	120	150	180
Min:Sec	5:42	3:48	2:51	2:17	1:54

RNAV (GPS) RWY 14

GRAYLING AAF (GOV)

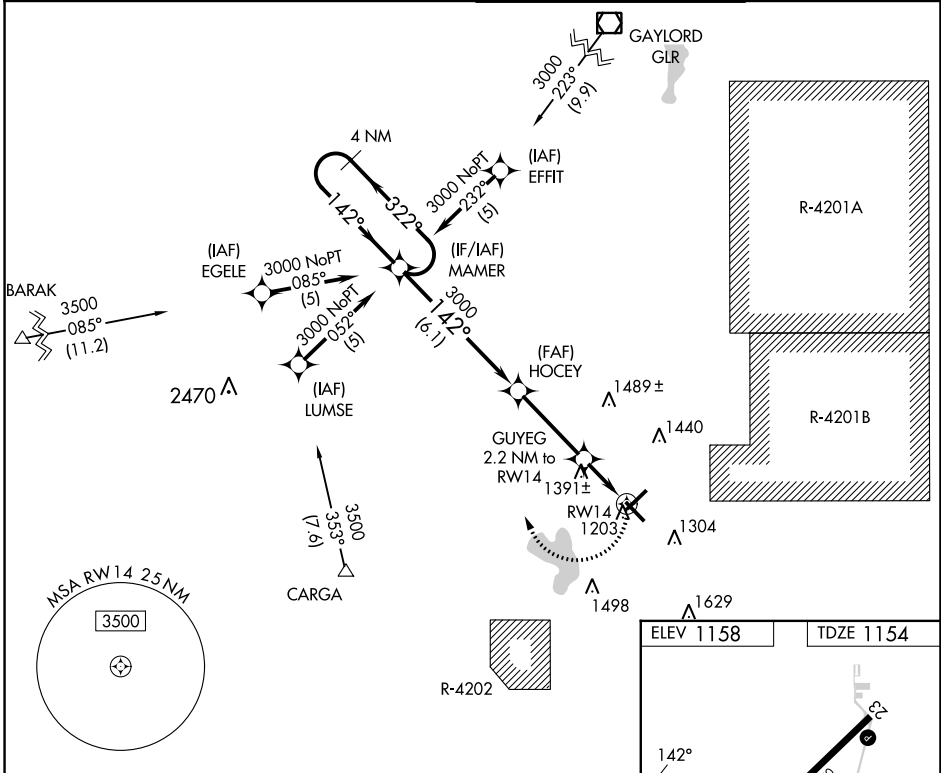
APP CRS	Rwy Idg	5005
142°	TDZE	1154
	Apt Elev	1158

RNP APCH.

- ⚠ Circling Rwy 5, 23, 32 NA at night. Rwy 14 helicopter visibility reduction below 3/4 SM NA.
- ⚠ When local altimeter setting not received, use Houghton Lake altimeter setting and increase all MDAs 60 feet and LNAV Cat C visibility 1/8 SM and Circling Cat D visibility 1/4 SM.

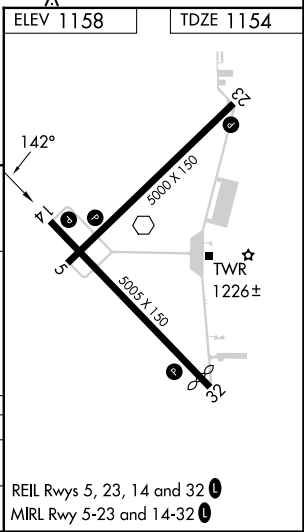
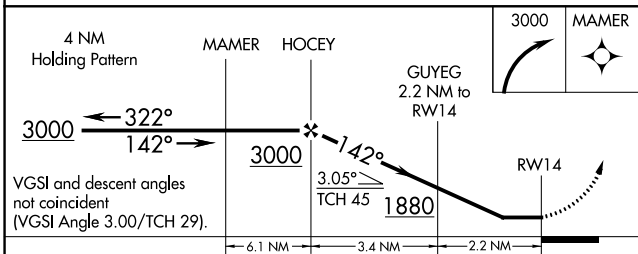
MISSED APPROACH:
Climbing right turn to 3000
direct MAMER and hold.

ATIS 119.075	MINNEAPOLIS CENTER 125.475 269.45	GRAYLING TOWER * 126.2 (CTAF) 0	GND CON 121.9
------------------------	---	---	-------------------------



EC-1, 22 FEB 2024 to 21 MAR 2024

EC-1, 22 FEB 2024 to 21 MAR 2024



CATEGORY	A	B	C	D
LNAV MDA	1700-1	546 (600-1)	1700-1 3/8 546 (600-1 3/8)	1700-1 3/4 546 (600-1 3/4)
CIRCLING	1720-1	562 (600-1)	1760-1 3/4 602 (700-1 3/4)	1960-2 1/2 802 (900-2 1/2)

REIL Rws 5, 23, 14 and 32 0
MIRL Rwy 5-23 and 14-32 0

VOR CGG 109.8	APP CRS 127°	Rwy Idg TDZE Apt Elev	5005 1154 1158
-------------------------	------------------------	-----------------------------	---

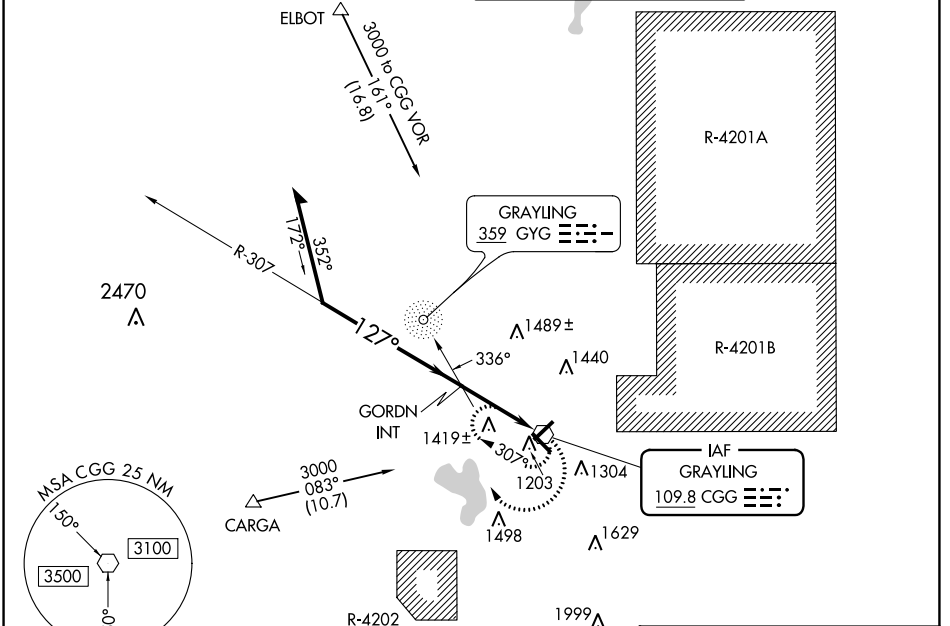
VOR RWY 14

GRAYLING AAF (GOV)

▼ Rwy 14 helicopter visibility reduction below ¼ SM NA. Circling Rwy 5, 23, 32 NA at night.
▲ NA When local altimeter setting not received, use Houghton Lake altimeter setting and increase all MDAs 60 feet and visibility S-14 and Circling Cat B/C/D ½ SM and GORDN fix minimums: S-14 Cat C and Circling Cat D ¼ SM.

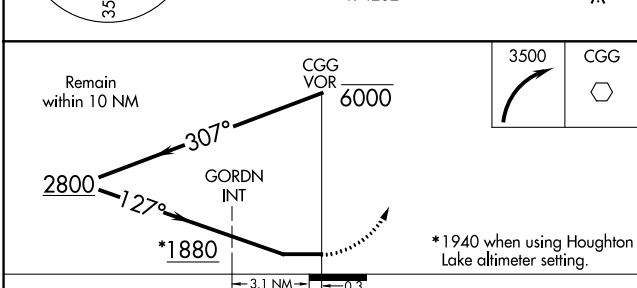
MISSED APPROACH:
 Climbing right turn to 3500 in CGG VOR holding pattern.

ATIS 119.075	MINNEAPOLIS CENTER 125.475 269.45	GRAYLING TOWER ★ 126.2 (CTAF) 0	GND CON 121.9
------------------------	---	---	-------------------------



EC-1, 22 FEB 2024 to 21 MAR 2024

EC-1, 22 FEB 2024 to 21 MAR 2024



ELEV 1158	TDZE 1154
-----------	-----------

CATEGORY	A	B	C	D
S-14	1880-1 726 (800-1)		1880-2 726 (800-2)	1880-2¼ 726 (800-2¼)
CIRCLING	1880-1 722 (800-1)		1880-2 722 (800-2)	1960-2½ 802 (900-2½)
GORDN FIX MINIMUMS				
S-14	1720-1 566 (600-1)		1720-1⅝ 566 (600-1⅝)	1720-1¾ 566 (600-1¾)
CIRCLING	1720-1 562 (600-1)		1760-1¾ 602 (700-1¾)	1960-2½ 802 (900-2½)

