

LOC/DME I-GKY <b>111.55</b> Chan 52 (Y)	APP CRS <b>342°</b>	Rwy Idg 6080 TDZE 620 Apt Elev 628
---	------------------------	---

# ILS or LOC/DME RWY 34

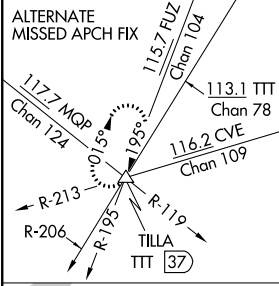
ARLINGTON MUNI (GKY)

When local altimeter setting not received, use Grand Prairie Muni altimeter setting. Inop table does not apply to S-ILS 34.  
 For inop MALSR increase S-LOC 34 Cat A, B visibility to 1 mile.



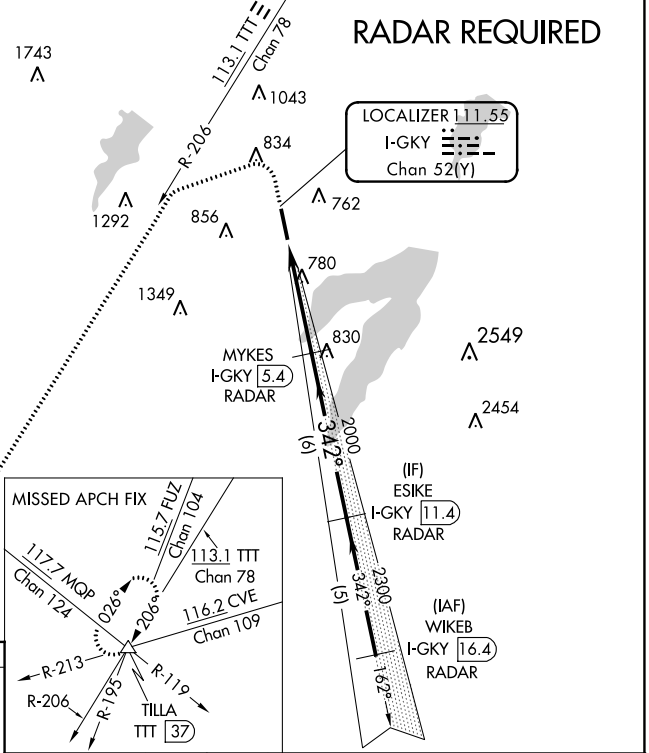
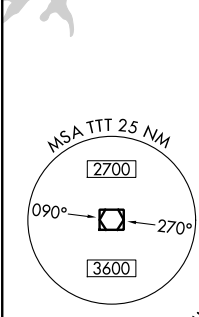
MISSED APPROACH: Climb to 1100 then climbing left turn to 3000 via heading 245° and TTT VOR/DME R-206 to TILLA INT/TTT 37 DME and hold.

ASOS <b>127.375</b>	REGIONAL APP CON <b>135.975 379.9</b>	ARLINGTON TOWER ★ <b>128.625 (CTAF)</b>	GND CON <b>121.875</b>	CLNC DEL <b>121.875</b>	CLNC DEL <b>118.85</b> (When twr closed)
------------------------	--	--	---------------------------	----------------------------	--

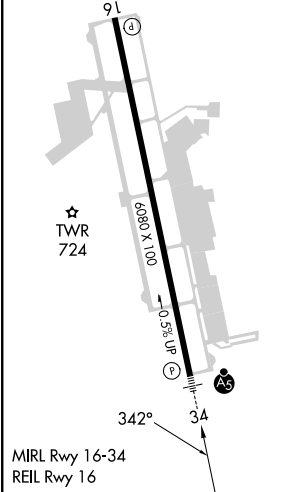


## RADAR REQUIRED

LOCALIZER **111.55**  
I-GKY  
Chan 52(Y)



ELEV 628	TDZE 620
----------	----------



1100 ↑  
3000 hdg 245°  
TTT R-206  
TILLA △

VGSI and ILS glidepath not coincident (VGSI Angle 3.00°/TCH 55).

\*LOC only.

I-GKY 1.1, \*I-GKY 2.4, I-GKY 5.4, ESIKE I-GKY 11.4, WIKEB I-GKY 16.4

2000, 3000, 342°, 2300

GS 3.00°  
TCH 60

CATEGORY	A	B	C	D
S-ILS 34		820-¾	200 (200-¾)	NA
S-LOC 34		1060-¾	440 (500-¾)	NA
CIRCLING	1100-1 472 (500-1)	1140-1 512 (600-1)	1220-1½ 592 (600-1½)	NA

SC-2, 22 FEB 2024 to 21 MAR 2024

SC-2, 22 FEB 2024 to 21 MAR 2024

APP CRS	Rwy Idg	<b>6080</b>
<b>162°</b>	TDZE	<b>628</b>
	Apt Elev	<b>628</b>

# RNAV (GPS) RWY 16

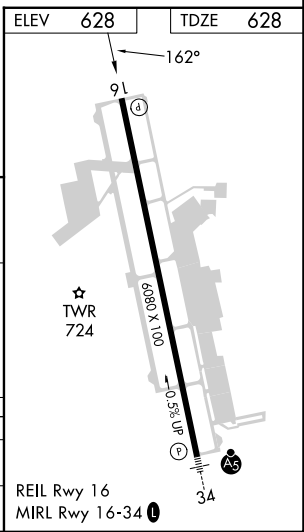
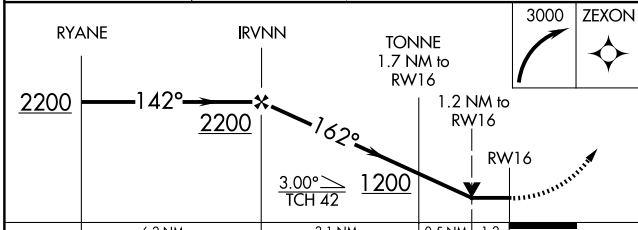
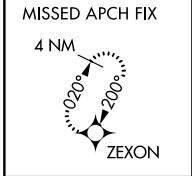
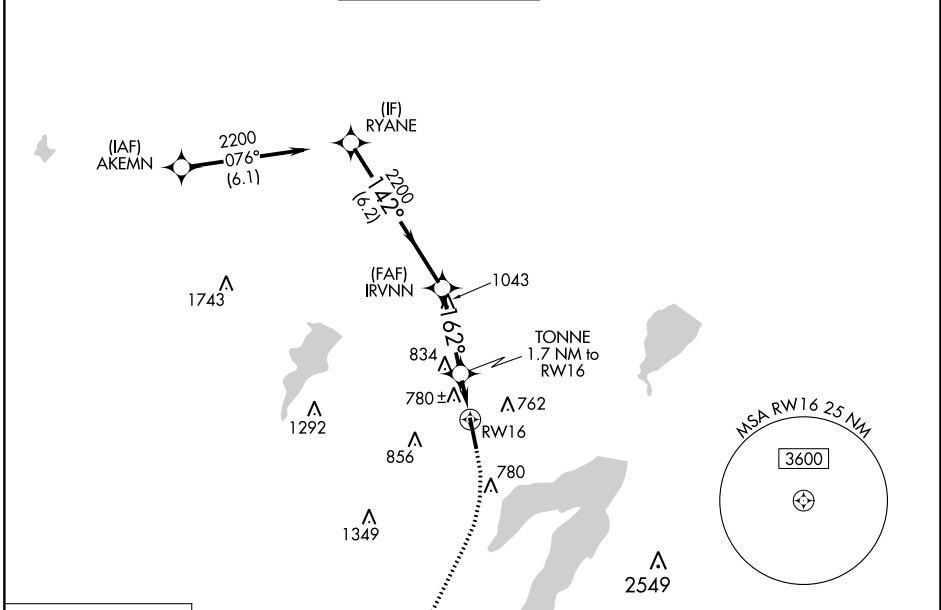
ARLINGTON MUNI (GKY)

RNP APCH - GPS.

**▼** Rwy 16 helicopter visibility reduction below 3/4 SM NA. VDP NA when using Grand Prairie Muni altimeter setting. When local altimeter setting not received, use Grand Prairie Muni altimeter setting.

MISSED APPROACH: Climbing right turn to 3000 direct ZEXON and hold.

ASOS <b>127.375</b>	REGIONAL APP CON <b>135.975 379.9</b>	ARLINGTON TOWER ★ <b>128.625 (CTAF) 0</b>	GND CON <b>121.875</b>	CLNC DEL <b>121.875</b>	CLNC DEL <b>118.85</b> <small>(When twr dosed)</small>
------------------------	--	--	---------------------------	----------------------------	--



CATEGORY	A	B	C	D
LNVA MDA	1040-1	412 (500-1)	1040-1 1/8 412 (500-1 1/8)	NA
CIRCLING	1100-1 472 (500-1)	1140-1 512 (600-1)	1220-1 1/2 592 (600-1 1/2)	NA

SC-2, 22 FEB 2024 to 21 MAR 2024

SC-2, 22 FEB 2024 to 21 MAR 2024

WAAS CH <b>93827</b> <b>W34A</b>	APP CRS <b>342°</b>	Rwy Idg TDZE Apt Elev	<b>6080</b> <b>620</b> <b>628</b>
--	------------------------	-----------------------------	---

# RNAV (GPS) RWY 34

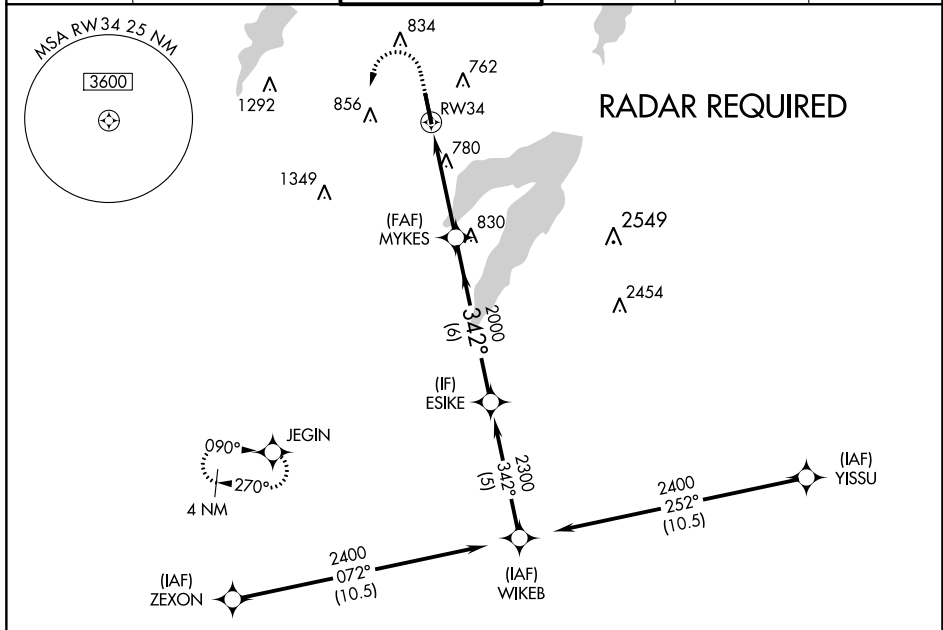
ARLINGTON MUNI (GKY)

**⚠** When local altimeter setting not received, use Grand Prairie Muni altimeter setting. For uncompensated Baro-VNAV systems, LNAV/VNAV NA below -16°C (4°F) or above 54°C (130°F). DME/DME RNP-0.3 NA. Inop table does not apply to LPV. For inop MALSR increase LNAV Cat A, B visibility to 1 mile.

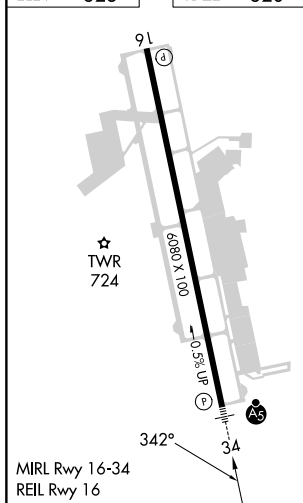


**MISSED APPROACH:** Climb to 1100 then climbing left turn to 2800 direct JEGIN and hold.

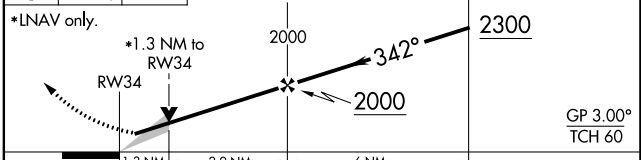
ASOS <b>127.375</b>	REGIONAL APP CON <b>135.975 379.9</b>	ARLINGTON TOWER ★ <b>128.625 (CTAF) 0</b>	GND CON <b>121.875</b>	CLNC DEL <b>121.875</b>	CLNC DEL <b>118.85</b> (When twr closed)
------------------------	--	--	---------------------------	----------------------------	--



ELEV 628	TDZE 620
----------	----------



1100, 2800, JEGIN, VGSI and RNAV glidepath not coincident (VGSI Angle 3.00/TCH 55).



CATEGORY	A	B	C	D
LPV DA	820- <sup>3</sup> / <sub>4</sub>	200 (200- <sup>3</sup> / <sub>4</sub> )		NA
LNAV/VNAV DA	1021- <sup>3</sup> / <sub>4</sub>	401 (400- <sup>3</sup> / <sub>4</sub> )		NA
LNAV MDA	1060- <sup>3</sup> / <sub>4</sub>	440 (500- <sup>3</sup> / <sub>4</sub> )		NA
CIRCLING	1100-1 472 (500-1)	1140-1 512 (600-1)	1220-1½ 592 (600-1½)	NA