

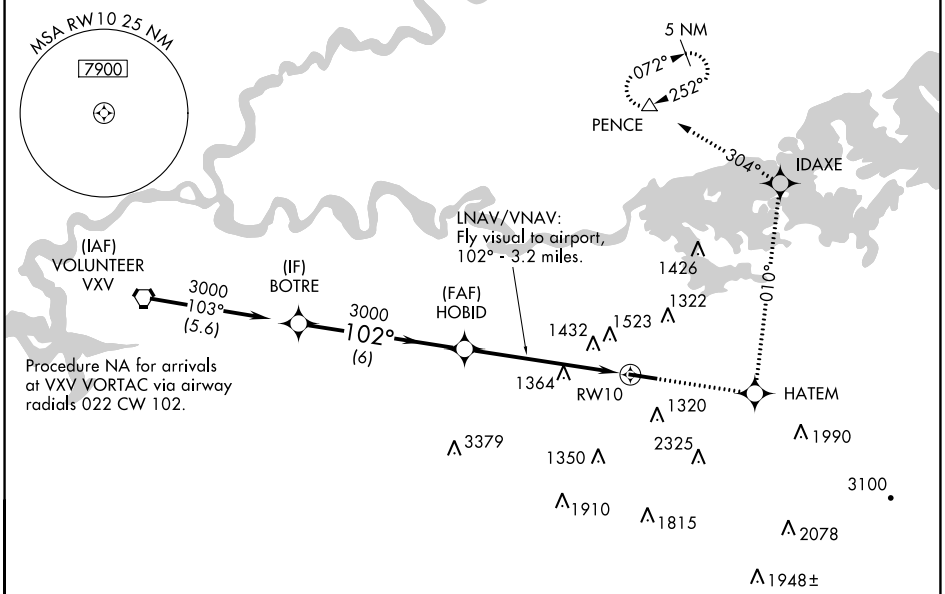
WAAS CH 99510 W10A	APP CRS 102°	Rwy Idg TDZE Apt Elev	5506 1014 1014
--	------------------------	-----------------------------	---

RNAV (GPS) RWY 10

GATLINBURG-PIGEON FORGE (GKT)

RNP APCH - GPS.	<p>▽ LNAV/VNAV NA when using Mc Ghee Tyson altimeter setting. For uncompensated Baro-VNAV systems, LNAV/VNAV NA below -17°C or above 47°C. Helicopter visibility reduction below 3/4 SM NA. When local altimeter setting not received, use Mc Ghee Tyson altimeter setting; increase LPV DA to 1425 feet, and all visibilities 1/2 SM; increase all MDAs 60 feet and Circling visibility Cat A 1/2 SM. Circling to Rwy 28 NA at night. Procedure NA at night.</p>	<p>MISSED APPROACH: Climb to 4000 direct HATEM and via 010° track to IDAXE and via 304° track to PENCE and hold.</p>
-----------------	--	--

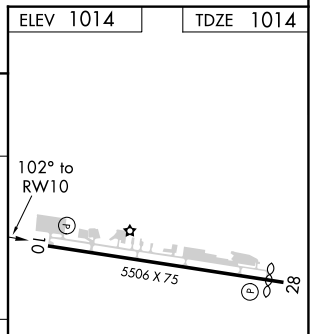
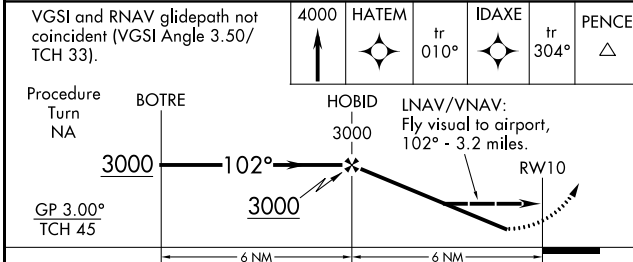
AWOS-3 126.875	KNOXVILLE APP CON 132.8 360.8	UNICOM 123.0 (CTAF) 0
--------------------------	---	---------------------------------



SE-1, 22 FEB 2024 to 21 MAR 2024

SE-1, 22 FEB 2024 to 21 MAR 2024

ELEV 1014	TDZE 1014
-----------	-----------



CATEGORY	A	B	C	D
LPV DA	1371-1¼		357 (400-1¼)	
LNAV/ VNAV DA	2013-2	999 (1000-2)	2013-3	999 (1000-3)
LNAV MDA	1800-1 786 (800-1)	1800-1¼ 786 (800-1¼)	1800-2¼ 786 (800-2¼)	1800-2½ 786 (800-2½)
CIRCLING	1800-1 786 (800-1)	1880-1¼ 866 (900-1¼)	2040-3 1026 (1100-3)	2680-3 1666 (1700-3)

REIL Rws 10 and 28
MIRL Rwy 10-28 0

VORTAC VXV 116.4 Chan 111	APP CRS 102°	Rwy Idg TDZE Apt Elev	5506 1014 1014
---	------------------------	-----------------------------	---

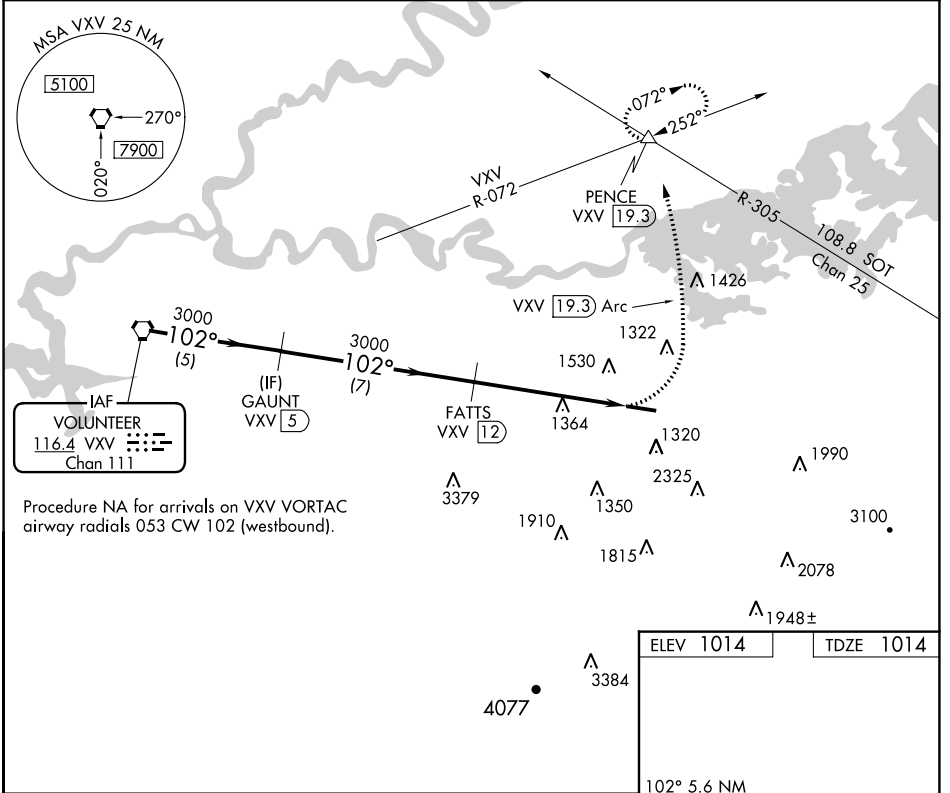
VOR/DME RWY 10

GATLINBURG-PIGEON FORGE (GKT)

⚠ Procedure NA at night. Helicopter visibility reduction below 1 SM NA. When local altimeter setting not received, use Mc Ghee Tyson altimeter setting and increase all MDAs 60 feet and S-10 visibility Cat A ½ SM.

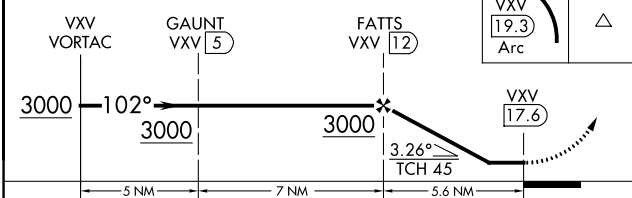
⚠ MISSED APPROACH: Climbing left turn to 4000 on VXV VORTAC 19.3 DME CCW Arc to PENCE INT/VXV 19.3 DME and hold, continue climb-in-hold to 4000.

AWOS-3 126.875	KNOXVILLE APP CON 132.8 360.8	UNICOM 123.0 (CTAF) 0
--------------------------	---	---------------------------------



Procedure NA for arrivals on VXV VORTAC airway radials 053 CW 102 (westbound).

VGSI and descent angles not coincident (VGSI Angle 3.50/TCH 33).



ELEV 1014	TDZE 1014
-----------	-----------

102° 5.6 NM from FAF

5506 X 75

CATEGORY	A	B	C	D
S-10	1840-1 826 (900-1)	1840-1¼ 826 (900-1¼)	1840-2½ 826 (900-2½)	1840-2¾ 826 (900-2¾)
CIRCLING	1840-1¼ 826 (900-1¼)	1880-1¼ 866 (900-1¼)	2040-3 1026 (1100-3)	2680-3 1666 (1700-3)

REIL Rwy 10 and 28
MIRL Rwy 10-28 0

SE-1, 22 FEB 2024 to 21 MAR 2024

SE-1, 22 FEB 2024 to 21 MAR 2024