

LOC I-GGG	APP CRS	Rwy Idg	9200
109.5	131°	TDZE	358
		Apt Elev	366

ILS or LOC RWY 13

EAST TEXAS RGNL (GGG)

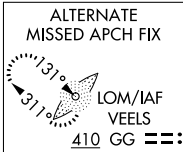
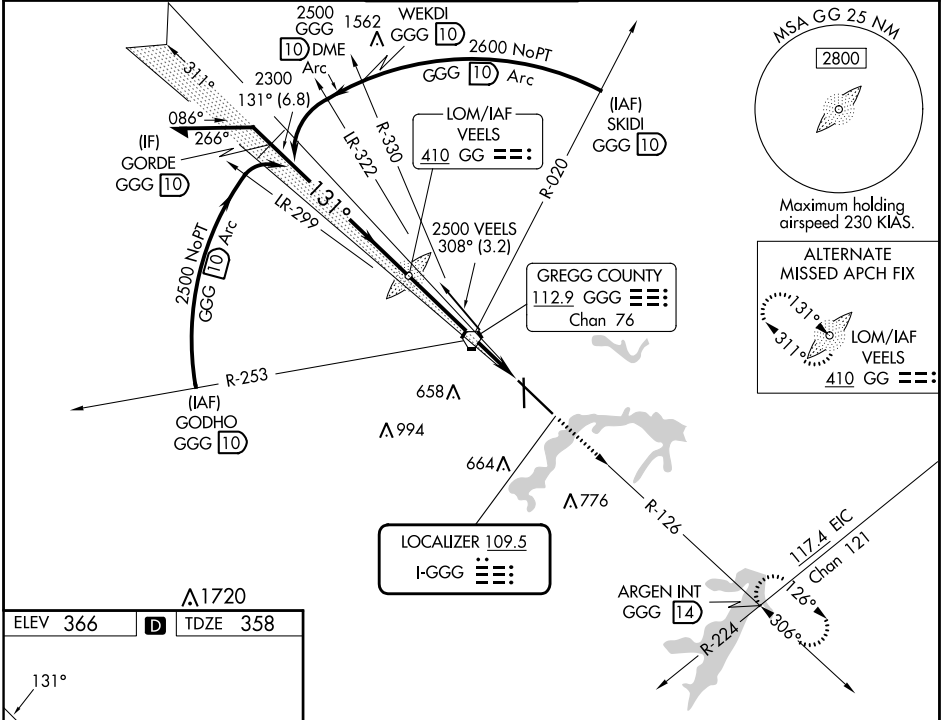
ADF or DME required for procedure entry.

▼ For inop ALS, increase S-ILS 13 Cat E visibility to RVR 4000, S-LOC 13 Cat C/D/E visibility to 1 3/8 SM. When local altimeter setting not received use Gilmer altimeter setting and ▲ increase DA 59 feet, all MDA 60 feet, increase LOC and Circling Cat C/D/E visibility 1/4 SM. For inop ALS when using Gilmer altimeter setting increase S-ILS 13 all Cats to RVR 4500, S-LOC 13 Cat C/D/E visibility to 1 3/8 SM. * RVR 1800 authorized with the use of FD or AP or HUD to DA (NA when using Gilmer altimeter setting).

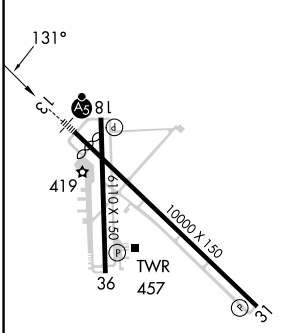


MISSED APPROACH:
Climb to 3000 via GGG
VORTAC R-126 to
ARGEN Int/GGG 14 DME
and hold.

ATIS 119.65	LONGVIEW APP CON * 124.675 257.975	EASTEX TOWER * 119.2 (CTAF) 0377.05	GND CON 121.6	UNICOM 122.95
-----------------------	--	---	-------------------------	-------------------------



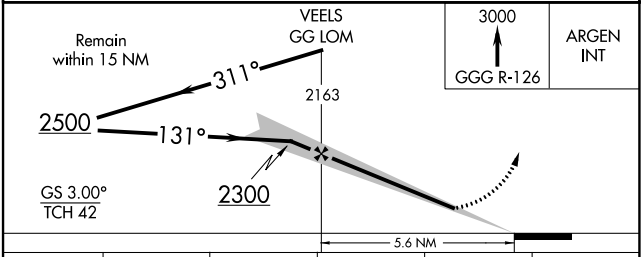
ELEV 366	D	TDZE 358
----------	---	----------



HIRL Rwy 13-31
MIRL Rwy 18-36

FAF to MAP 5.6 NM

Knots	60	90	120	150	180
Min:Sec	5:36	3:44	2:48	2:14	1:52



CATEGORY	A	B	C	D	E
S-ILS 13	*558/24 200 (200-1/2)				558/24 200 (200-1/2)
S-LOC 13	860/24	502 (500-1/2)	860/50	502 (500-1)	860/60 502 (500-1/4)
CIRCLING	860-1	494 (500-1)	980-1 3/4 614 (700-1 3/4)	1080-2 1/4 714 (800-2 1/4)	1080-2 1/2 714 (800-2 1/2)

SC-2, 22 FEB 2024 to 21 MAR 2024

SC-2, 22 FEB 2024 to 21 MAR 2024

WAAS CH 61100 W13A	APP CRS 131°	Rwy Idg 9200 TDZE 358 Apt Elev 366
--	------------------------	---

RNAV (GPS) RWY 13

EAST TEXAS RGNL (GGG)

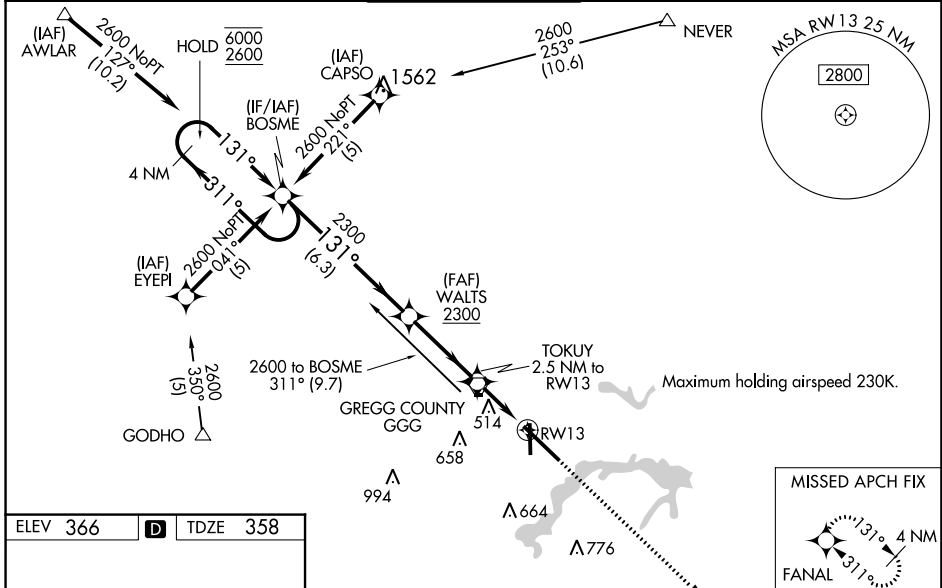
RNP APCH.

Baro-VNAV NA when using Gilmer altimeter setting. VDP NA when using Gilmer altimeter setting. For inop ALS, increase LPV Cat E visibility to RVR 4000, LNAV/VNAV all Cats visibility to RVR 5500, LNAV Cat A/B visibility to RVR 5500, and LNAV Cat D/E visibility to 1 1/4 SM. When local altimeter setting not received use Gilmer altimeter setting and increase LPV DA to 671 feet; increase LNAV/VNAV DA to 785 feet, and visibility to RVR 4500; increase all MDA 60 feet, and LNAV Cats C/D visibility to RVR 5000, and Circling Cats C/D/E visibility 1/4 SM. For inop ALS when using Gilmer altimeter setting, increase LPV all Cats visibility to RVR 4500, LNAV/VNAV Cat E visibility to 1 1/4 SM, and LNAV Cats A/B visibility to 5500, and LNAV Cats C/D/E visibility to 1 3/8 SM. For uncompensated Baro-VNAV systems, LNAV/VNAV NA below -15°C or above 54°C.

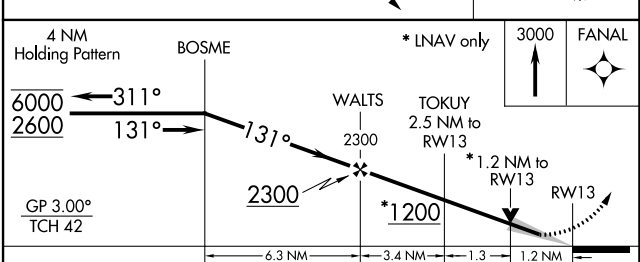
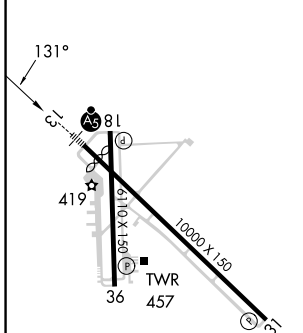
MALSR

 MISSED APPROACH: Climb to 3000 direct FANAL and hold.

ATIS 119.65	LONGVIEW APP CON* 124.675 257.975	EASTEX TOWER* 119.2 (CTAF) 377.05	GND CON 121.6	UNICOM 122.95
-----------------------	---	---	-------------------------	-------------------------



ELEV 366	D	TDZE 358
-----------------	----------	-----------------



CATEGORY	A	B	C	D	E
LPV DA		612/24	254 (300-1/2)		
LNAV/VNAV DA		726/40	368 (400-3/4)		
LNAV MDA	780/24	422 (500-1/2)	780/40 422 (500-3/4)	780/50	422 (500-1)
CIRCLING	860-1	494 (500-1)	980-1 3/4 614 (700-1 3/4)	1080-2 1/4 714 (800-2 1/4)	1080-2 1/2 714 (800-2 1/2)

SC-2, 22 FEB 2024 to 21 MAR 2024

SC-2, 22 FEB 2024 to 21 MAR 2024

WAAS CH 99426 W18A	APP CRS 176°	Rwy Idg TDZE Apt Elev	6109 356 365
--	------------------------	-----------------------------	---

RNAV (GPS) RWY 18

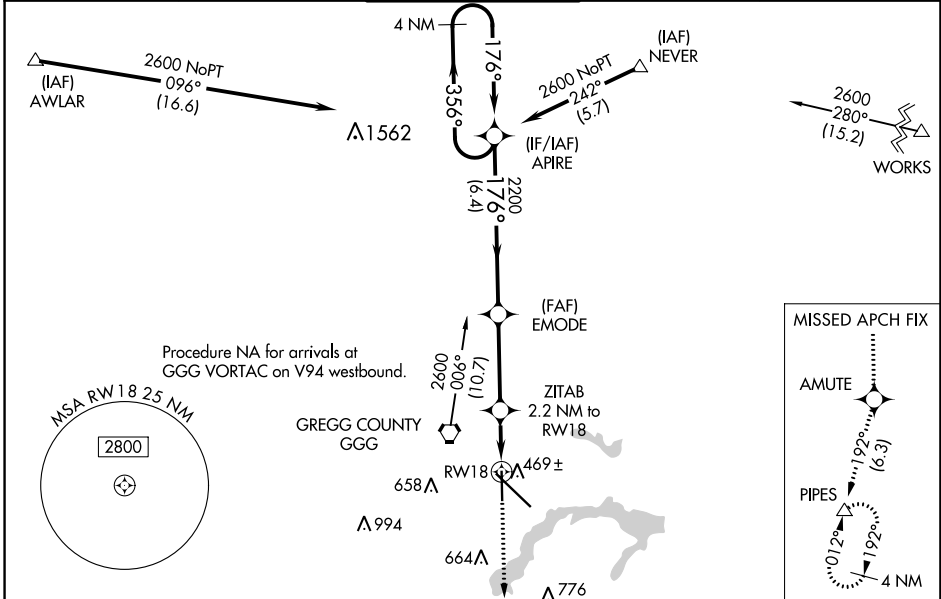
EAST TEXAS RGNL (GGG)

RNP APCH - GPS

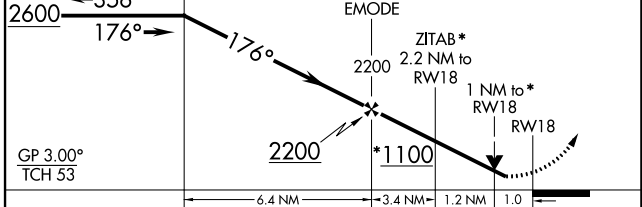
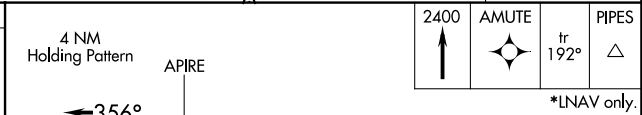
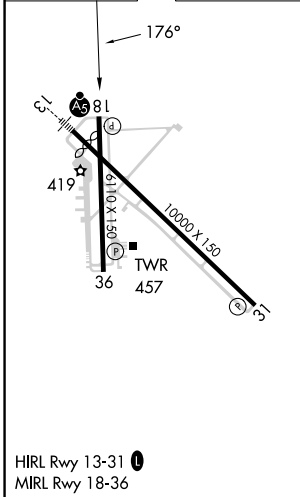
Baro-VNAV NA when using Gilmer altimeter setting. For uncompensated Baro-VNAV systems, LNAV/VNAV NA below -15°C or above 41°C. Rwy 18 helicopter visibility reduction below ¾ SM NA. When local altimeter setting not received, use Gilmer altimeter setting and increase all DA 59 feet and all MDA 60 feet; increase LPV and LNAV/VNAV visibility all Cats ½ SM and LNAV and Circling visibility Cts C/D ¼ SM.

MISSED APPROACH:
Climb to 2400 direct AMUTE and on track 192° to PIPES and hold.

ATIS 119.65	LONGVIEW APP CON* 124.675 257.975	EASTEX TOWER* 119.2 (CTAF) 0377.05	GND CON 121.6	UNICOM 122.95
-----------------------	---	--	-------------------------	-------------------------



ELEV 365	D	TDZE 356
----------	----------	----------



CATEGORY	A	B	C	D
LPV DA		630-7/8	274 (300-7/8)	
LNAV/VNAV DA		652-1	296 (300-1)	
LNAV MDA		720-1	364 (400-1)	
CIRCLING	860-1	495 (500-1)	980-1 3/4 614 (700-1 3/4)	1080-2 1/4 714 (800-2 1/4)

SC-2, 22 FEB 2024 to 21 MAR 2024

SC-2, 22 FEB 2024 to 21 MAR 2024

WAAS CH 53504 W31A	APP CRS 311°	Rwy Idg TDZE Apt Elev	9200 354 365
--	------------------------	-----------------------------	---

RNAV (GPS) RWY 31

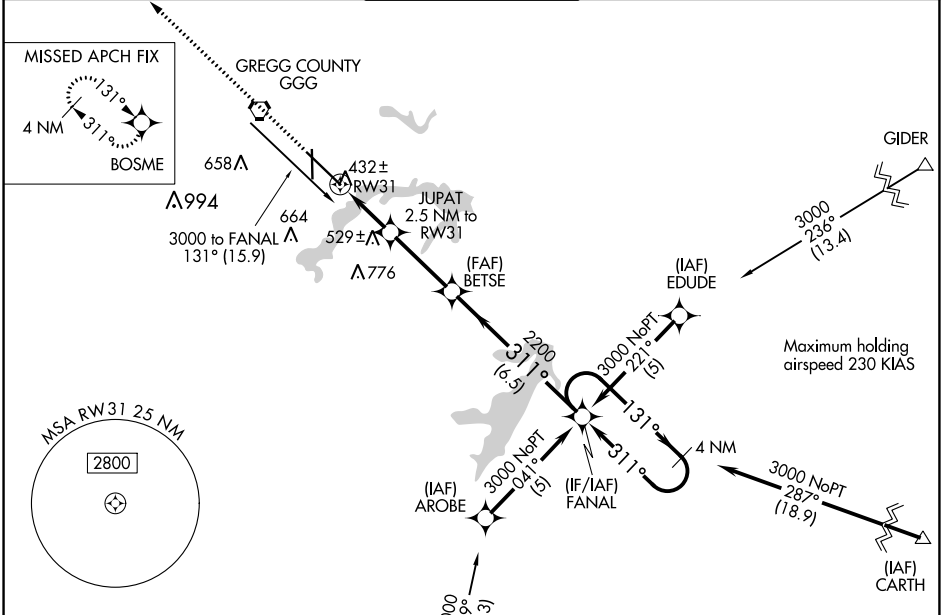
EAST TEXAS RGNL (GGG)

RNP APCH - GPS

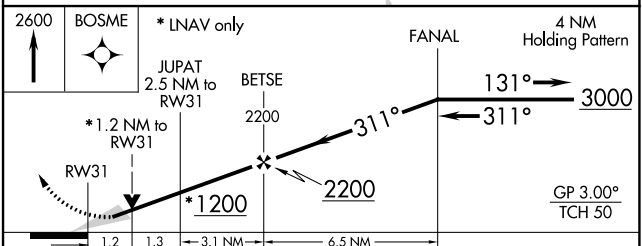
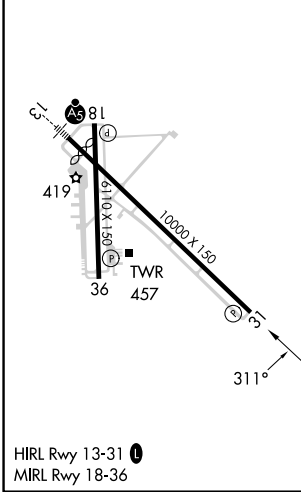
▼ Baro-VNAV NA when using Gilmer altimeter setting. For uncompensated Baro-VNAV systems, LNAV/VNAV NA below -15°C or above 48°C. VDP NA when using Gilmer altimeter setting. When local altimeter setting not received, use Gilmer altimeter setting and increase all DA 59 feet, all MDA 60 feet. Increase all LPV and LNAV/VNAV visibilities 1/8 SM and Circling Cats C/D/E visibilities 1/4 SM.

MISSED APPROACH:
Climb to 2600 direct BOSME and hold.

ATIS 119.65	LONGVIEW APP CON* 124.675 257.975	EASTEX TOWER* 119.2 (CTAF) 0377.05	GND CON 121.6	UNICOM 122.95
-----------------------	---	--	-------------------------	-------------------------



ELEV 365	D	TDZE 354
----------	----------	----------



CATEGORY	A	B	C	D	E
LPV DA	604-3/4 250 (300-3/4)				
LNAV/VNAV DA	682-1/4 328 (400-1/4)				
LNAV MDA	800-1	446 (500-1)	800-1/4 446 (500-1/4)	800-1/2	446 (500-1/2)
CIRCLING	860-1	495 (500-1)	980-1/4 614 (700-1/4)	1080-2/4 714 (800-2/4)	1080-2/2 715 (800-2/2)

SC-2, 22 FEB 2024 to 21 MAR 2024

SC-2, 22 FEB 2024 to 21 MAR 2024

APP CRS 356°	Rwy Idg 6109
	TDZE 365
	Apt Elev 365

RNAV (GPS) RWY 36

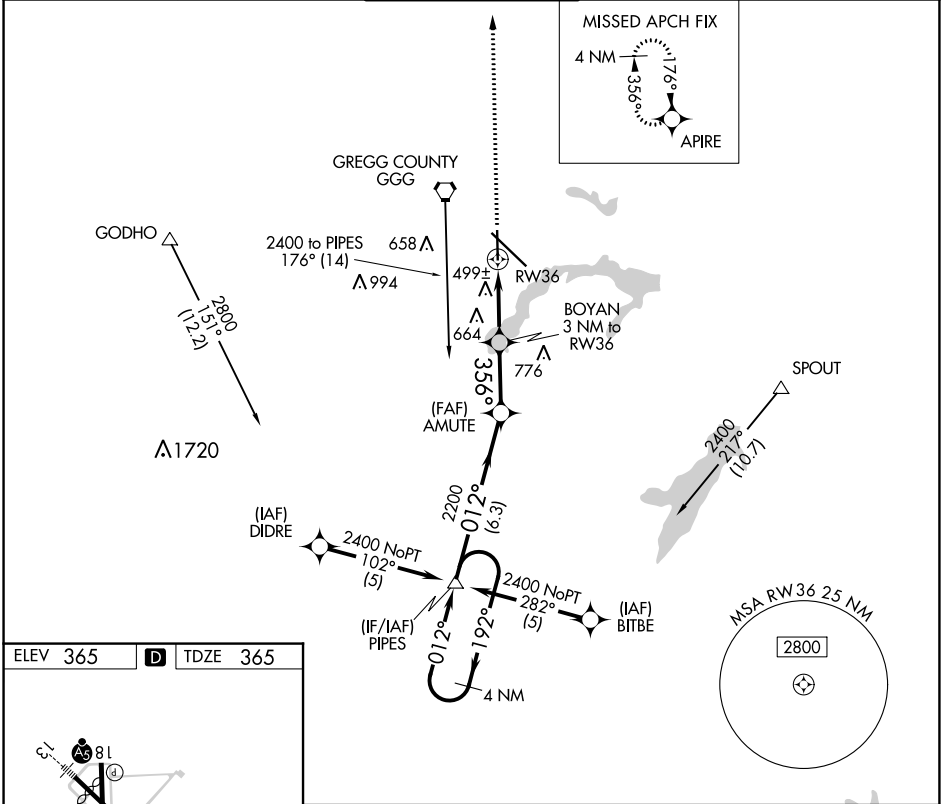
EAST TEXAS RGNL (GGG)

RNP APCH - GPS.

▼ Visibility reduction by helicopters NA. When local altimeter setting not received, use Gilmer
 ▲ altimeter setting and increase all MDA 60 feet and LNAV and Circling Cats C/D visibility ¼ SM.

MISSED APPROACH: Climb to 2600 direct APIRE and hold.

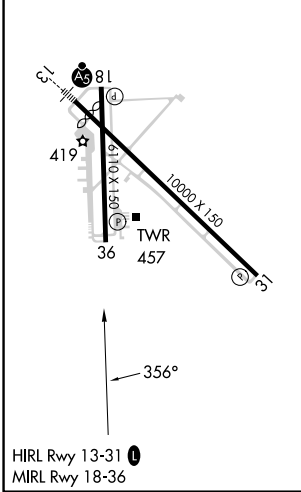
ATIS 119.65	LONGVIEW APP CON* 124.675 257.975	EASTEX TOWER* 119.2 (CTAF) 0377.05	GND CON 121.6	UNICOM 122.95
-----------------------	---	--	-------------------------	-------------------------



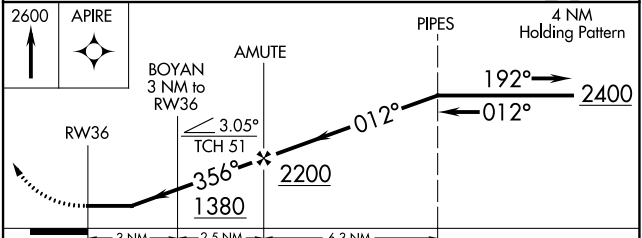
SC-2, 22 FEB 2024 to 21 MAR 2024

SC-2, 22 FEB 2024 to 21 MAR 2024

ELEV 365	D	TDZE 365
----------	----------	----------



LONGVIEW, TEXAS
 Amdt 1A 25MAR21



CATEGORY	A	B	C	D
LNAV MDA	760-1 395 (400-1)			760-1¼ 395 (400-1¼)
CIRCLING	860-1 495 (500-1)		980-1¾ 614 (700-1¾)	1080-2¼ 714 (800-2¼)

32°23'N-94°43'W

RNAV (GPS) RWY 36

EAST TEXAS RGNL (GGG)

LONGVIEW, TEXAS

AL-807 (FAA)

24025

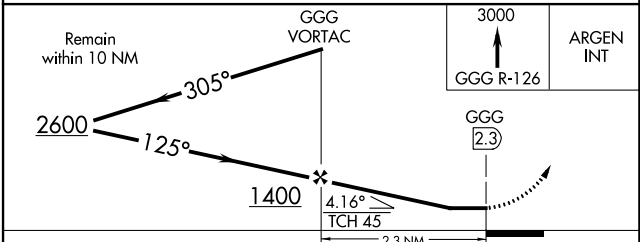
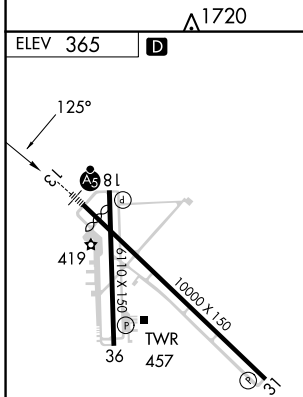
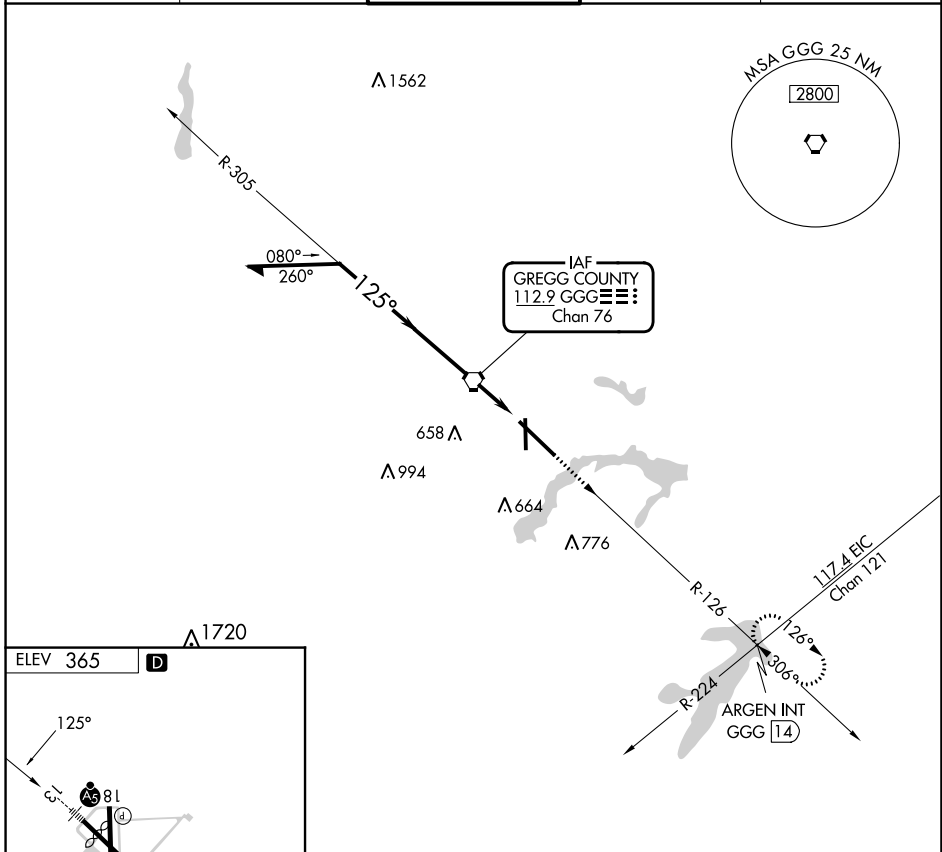
VORTAC GGG 112.9 Chan 76	APP CRS 125°	Rwy Idg TDZE Apt Elev	N/A N/A 365
---------------------------------------	------------------------	-----------------------------	--

VOR-A
EAST TEXAS RGNL (GGG)

▼ When local altimeter setting not received, use Gilmer altimeter setting and increase all MDA 60 feet.

MISSED APPROACH: Climb to 3000 via GGG VORTAC R-126 to ARGEN Int/GGG 14 DME and hold.

ATIS 119.65	LONGVIEW APP CON* 124.675 257.975	EASTEX TOWER* 119.2 (CTAF) 0377.05	GND CON 121.6	UNICOM 122.95
-----------------------	---	--	-------------------------	-------------------------



FAF to MAP 2.3 NM					
Knots	60	90	120	150	180
Min:Sec	2:18	1:32	1:09	0:55	0:46
CATEGORY	A	B	C	D	
CIRCLING	860-1	495 (500-1)	980-1¾ 614 (700-1¾)	1080-2¼ 714 (800-2¼)	

LONGVIEW, TEXAS
Orig-B 25MAR21

32°23'N-94°43'W

EAST TEXAS RGNL (GGG)
VOR-A

SC-2, 22 FEB 2024 to 21 MAR 2024

SC-2, 22 FEB 2024 to 21 MAR 2024

VORTAC GGG 112.9 Chan 76	APP CRS 125°	Rwy Idg TDZE Apt Elev	9200 358 365
---------------------------------------	------------------------	-----------------------------	---

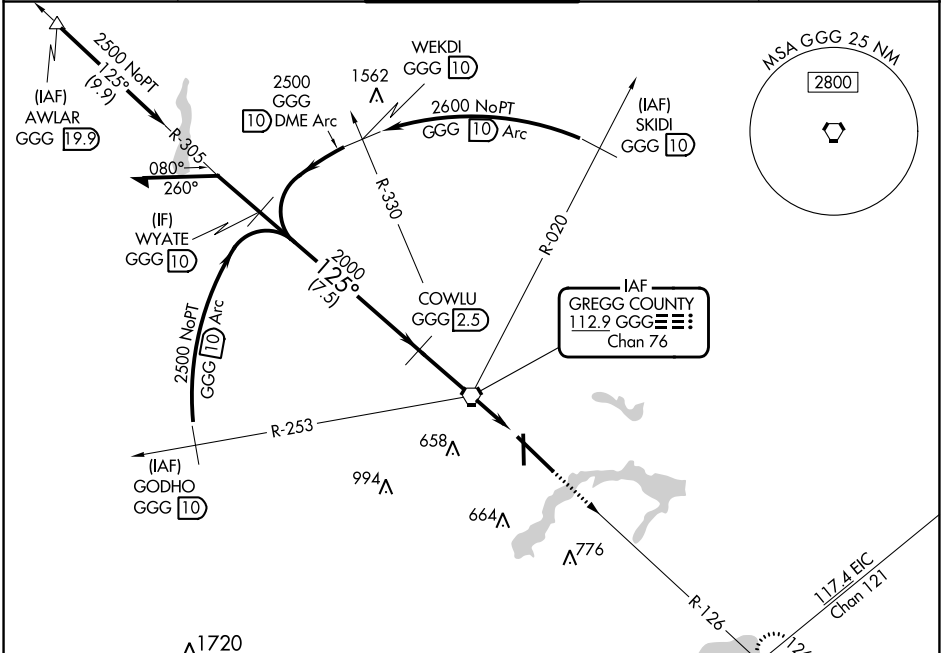
VOR/DME or TACAN RWY 13

EAST TEXAS RGNL (GGG)

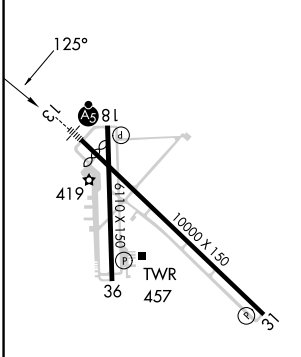
⚠ For inop ALS, increase S-13 Cat C/D/E visibility to 1 $\frac{1}{2}$ SM. When local altimeter setting not received use Gilmer altimeter setting and increase all MDA 60 feet, S-13 and Circling Cats C/D/E visibility $\frac{1}{2}$ SM. VDP NA when using Gilmer altimeter setting. For inop ALS when using Gilmer altimeter setting increase S-13 Cat C/D/E visibility to 1 $\frac{1}{2}$ SM.

MALS MISSED APPROACH: Climb to 3000 via GGG R-126 to ARGEN Int/GGG 14 DME and hold.

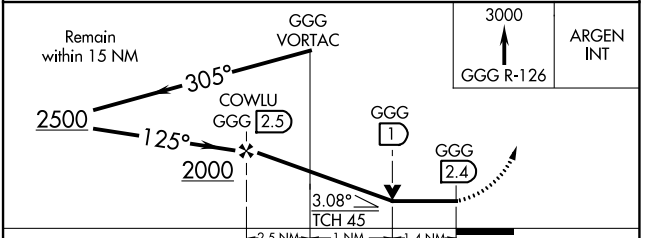
ATIS 119.65	LONGVIEW APP CON* 124.675 257.975	EASTEX TOWER* 119.2(CTAF) 377.05	GND CON 121.6	UNICOM 122.95
-----------------------	---	--	-------------------------	-------------------------



ELEV 365	D	TDZE 358
----------	----------	----------



HIRL Rwy 13-31
MIRL Rwy 18-36



CATEGORY	A	B	C	D	E
S-13	860/24 502 (500- $\frac{1}{2}$)		860/55 502 (500-1)		860/55 502 (500-1)
CIRCLING	860-1 495 (500-1)		980-1 $\frac{3}{4}$ 614 (700-1 $\frac{3}{4}$)	1080-2 $\frac{1}{4}$ 714 (600-2 $\frac{1}{4}$)	1080-2 $\frac{1}{2}$ 715 (800-2 $\frac{1}{2}$)

SC-2, 22 FEB 2024 to 21 MAR 2024

SC-2, 22 FEB 2024 to 21 MAR 2024

VORTAC GGG 112.9 Chan 76	APP CRS 306°	Rwy Idg TDZE Apt Elev	9200 354 365
---------------------------------------	------------------------	-----------------------------	---

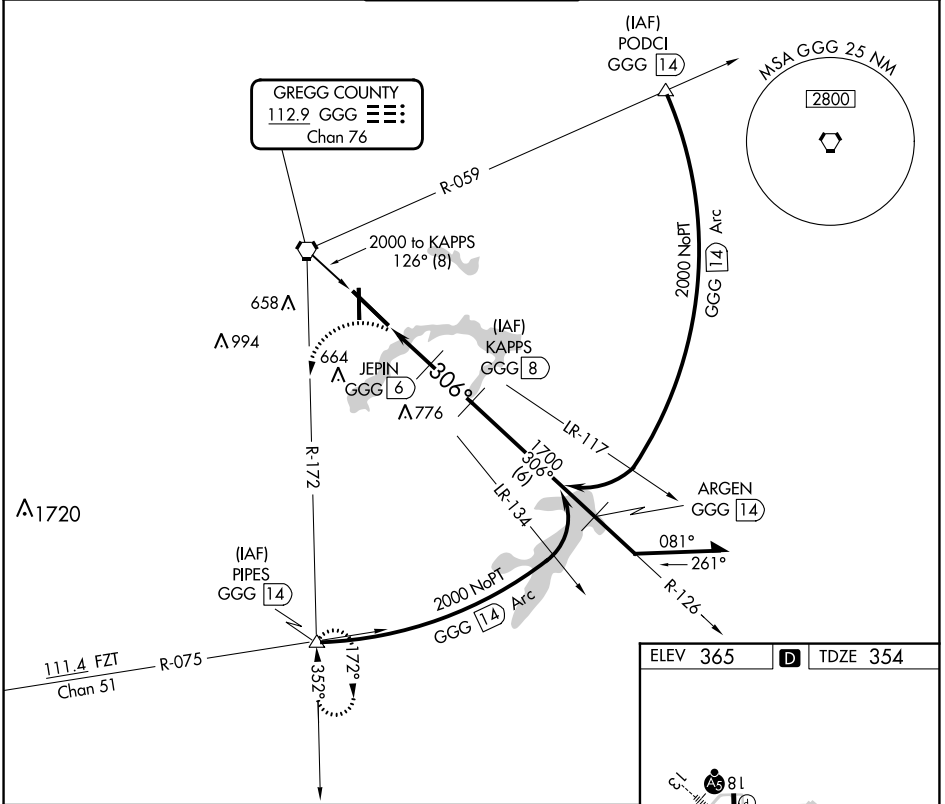
VOR/DME or TACAN Rwy 31

EAST TEXAS RGNL (GGG)

⚠ When local altimeter setting not received, use Gilmer altimeter setting and increase all MDA 60 feet and increase S-31 Cats C/D/E and Circling Cats C/D/E visibility $\frac{1}{2}$ SM. VDP NA when using Gilmer altimeter setting.

MISSED APPROACH: Climb to 800, then climbing left turn to 2500 via GGG R-172 to PIPES INT and hold.

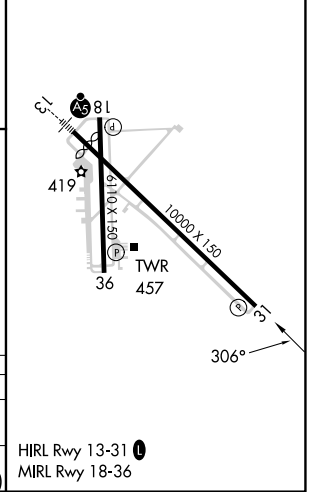
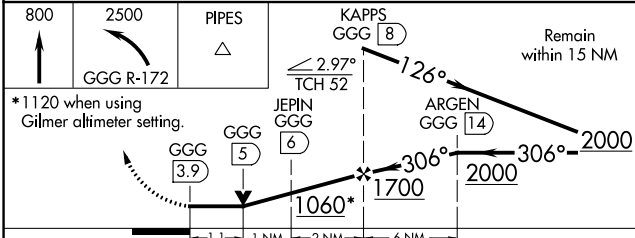
ATIS 119.65	LONGVIEW APP CON* 124.675 257.975	EASTEX TOWER* 119.2 (CTAF) 377.05	GND CON 121.6	UNICOM 122.95
-----------------------	---	---	-------------------------	-------------------------



SC-2, 22 FEB 2024 to 21 MAR 2024

SC-2, 22 FEB 2024 to 21 MAR 2024

ELEV 365	D	TDZE 354
----------	----------	----------



CATEGORY	A	B	C	D	E
S-31	780-1 426 (500-1)		780-1 $\frac{1}{8}$ 426 (500-1 $\frac{1}{8}$)		
CIRCLING	860-1 495 (500-1)		980-1 $\frac{3}{4}$ 614 (700-1 $\frac{3}{4}$)	1080-2 $\frac{1}{4}$ 714 (800-2 $\frac{1}{4}$)	1080-2 $\frac{1}{2}$ 715 (800-2 $\frac{1}{2}$)