

(DAWNN1.DAWNN) 23334
DAWNN ONE DEPARTURE

AL-5514 (FAA)

SHELBYVILLE MUNI (G₂Z)
 SHELBYVILLE, INDIANA

ASOS
 121.55
 INDIANAPOLIS DEP CON
 127.15 317.8

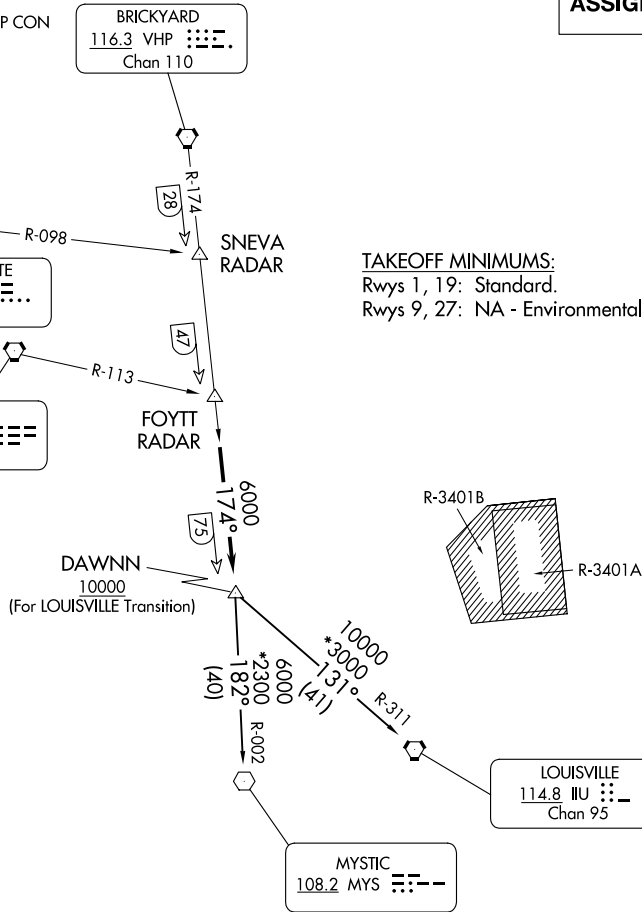
BRICKYARD
 116.3 VHP
 Chan 110

**TOP ALTITUDE:
 ASSIGNED BY ATC**

TERRE HAUTE
 115.3 TTH
 Chan 100

HOOSIER
 110.2 OOM
 Chan 39

TAKEOFF MINIMUMS:
 Rwy 1, 19: Standard.
 Rwy 9, 27: NA - Environmental



EC-2, 22 FEB 2024 to 21 MAR 2024

EC-2, 22 FEB 2024 to 21 MAR 2024

- NOTE: RADAR required.
- NOTE: Select appropriate localizer/DME frequency/channel prior to departure.
- NOTE: Turbojets accelerate to 250K until reaching 10000, if unable advise ATC.
- NOTE: Assigned to aircraft with a requested altitude of 11000 or above.

(NARRATIVE ON FOLLOWING PAGE)

NOTE: Chart not to scale.

DAWNN ONE DEPARTURE
 (DAWNN1.DAWNN) 07DEC17

SHELBYVILLE, INDIANA
 SHELBYVILLE MUNI (G₂Z)



DEPARTURE ROUTE DESCRIPTION

DEPARTING ALL OTHER AUTHORIZED RUNWAYS/AIRPORTS: Climb on assigned heading to assigned altitude. Thence....

....on RADAR vectors to join VHP R-174 to DAWNN INT then on transition or assigned route. Expect clearance to requested altitude ten minutes after departure.

LOUISVILLE TRANSITION (DAWNN1.IIU): From over DAWNN INT on IIU R-311 to IIU VORTAC.

MYSTIC TRANSITION (DAWNN1.MYS): From over DAWNN INT on MYS R-002 to MYS VOR.

EC-2, 22 FEB 2024 to 21 MAR 2024

EC-2, 22 FEB 2024 to 21 MAR 2024

(OOM5.OOM) 23334

HOOSIER FIVE DEPARTURE

AL-5514 (FAA)

SHELBYVILLE MUNI(GEZ)

SHELBYVILLE, INDIANA

ASOS
121.55
INDIANAPOLIS DEP CON
127.15 317.8

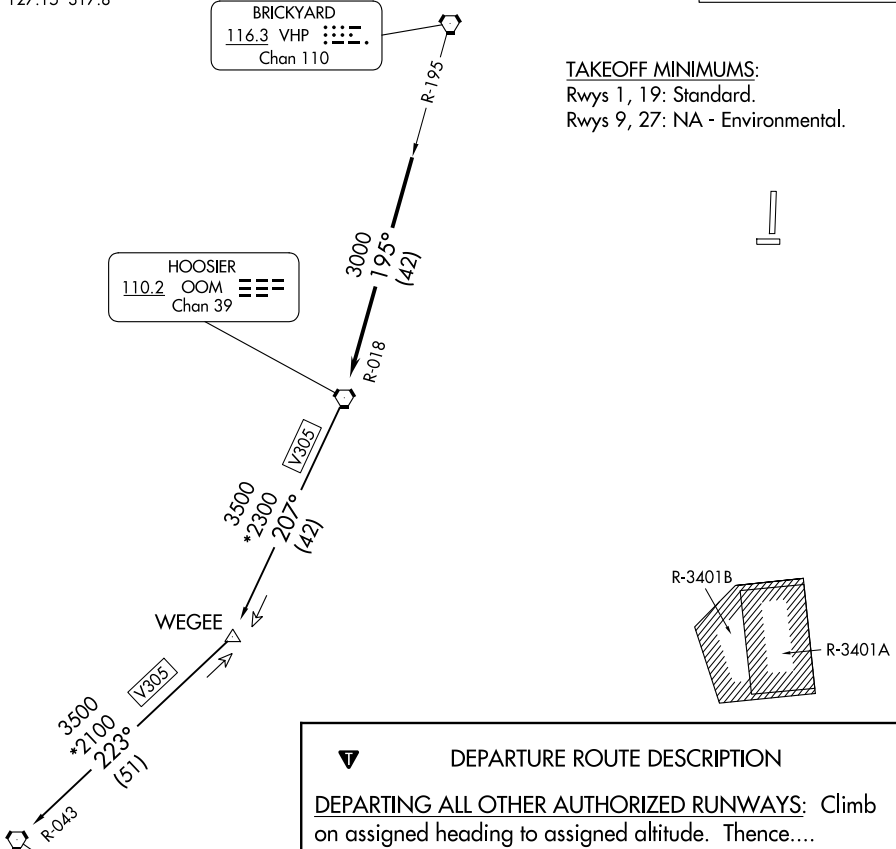
**TOP ALTITUDE:
ASSIGNED BY ATC**

BRICKYARD
116.3 VHP Chan 110

HOOSIER
110.2 OOM Chan 39

POCKET CITY
113.3 PXV Chan 80

TAKEOFF MINIMUMS:
Rwys 1, 19: Standard.
Rwys 9, 27: NA - Environmental.



DEPARTURE ROUTE DESCRIPTION

DEPARTING ALL OTHER AUTHORIZED RUNWAYS: Climb on assigned heading to assigned altitude. Thence....

....expect RADAR vectors to join VHP R-195 to OOM VORTAC then via transition or assigned route. Expect clearance to requested altitude ten minutes after departure.

POCKET CITY TRANSITION (OOM5.PXV): From over OOM VORTAC via OOM R-207 to WEGEE, then via PXV R-043 to PXV VORTAC.

- NOTE: RADAR required.
- NOTE: Select appropriate localizer/DME frequency/channel prior to departure.
- NOTE: Turbojets accelerate to 250K until reaching 10000, if unable advise ATC.
- NOTE: Assigned to aircraft with a requested altitude of 11000 or above.

NOTE: Chart not to scale.

EC-2, 22 FEB 2024 to 21 MAR 2024

EC-2, 22 FEB 2024 to 21 MAR 2024

HOOSIER FIVE DEPARTURE

(OOM5.OOM) 01FEB18

SHELBYVILLE, INDIANA

SHELBYVILLE MUNI(GEZ)

(MAREO5.MAREO) 23334
MAREO FIVE DEPARTURE

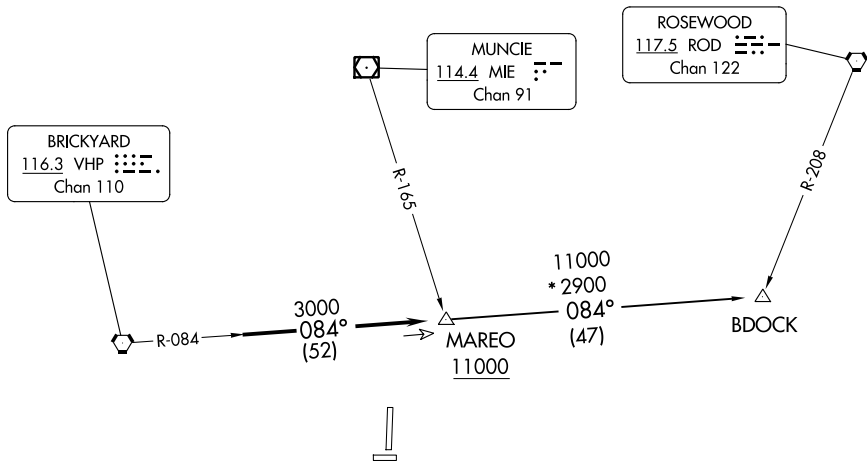
AL-5514 (FAA)

SHELBYVILLE MUNI (GEZ)
 SHELBYVILLE, INDIANA

ASOS
 121.55
 INDIANAPOLIS DEP CON
 127.15 317.8

**TOP ALTITUDE:
 ASSIGNED BY ATC**

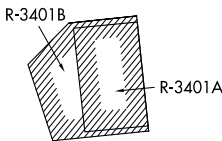
TAKEOFF MINIMUMS
 Rwys 1, 19: Standard.
 Rwys 9, 27: NA - Environmental.



EC-2, 22 FEB 2024 to 21 MAR 2024

EC-2, 22 FEB 2024 to 21 MAR 2024

- NOTE: RADAR required.
- NOTE: Select appropriate localizer/DME frequency/channel prior to departure.
- NOTE: Turbojets accelerate to 250K until reaching 10000, if unable advise ATC.
- NOTE: Assigned to aircraft with a requested altitude of 11000 or above.



NOTE: Chart not to scale.



DEPARTURE ROUTE DESCRIPTION

DEPARTING ALL OTHER AUTHORIZED RUNWAYS: Climb on assigned heading to assigned altitude. Thence...

...expect RADAR vectors to join VHP R-084 to MAREO INT then via transition or assigned route. Expect clearance to requested altitude ten minutes after departure.

BDOCK TRANSITION (MAREO5.BDOCK): From over MAREO INT via VHP R-084 to BDOCK INT.

(MEARZ7.MEARZ) 23334

MEARZ SEVEN DEPARTURE

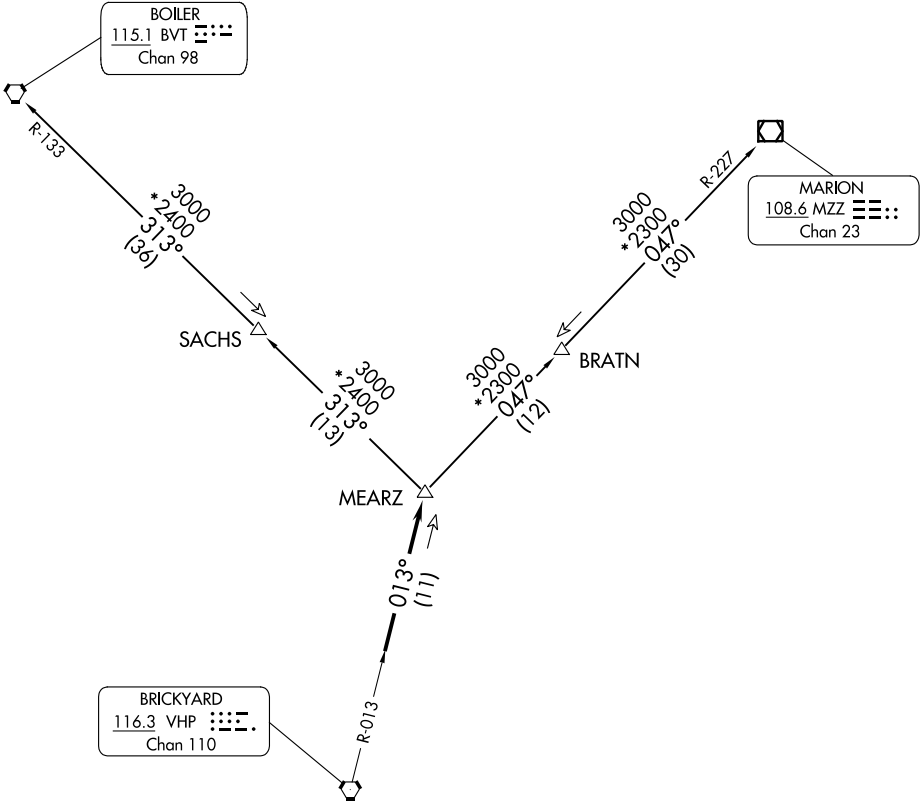
AL-5514 (FAA)

SHELBYVILLE MUNI (GEZ)
SHELBYVILLE, INDIANA

**TOP ALTITUDE:
ASSIGNED BY ATC**

RADAR required.

ASOS
121.55
INDIANAPOLIS DEP CON
127.15 317.8



TAKEOFF MINIMUMS

Rwy 1, 19: Standard.

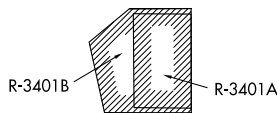
Rwy 9, 27: NA - Environmental

NOTE: Turbojets accelerate to 250K until reaching 10000, if unable advise ATC.

NOTE: Assigned to aircraft with a requested altitude of 11000 or above.

NOTE: Select appropriate localizer/DME frequency/channel prior to departure.

(NARRATIVE ON FOLLOWING PAGE)



NOTE: Chart not to scale.

EC-2, 22 FEB 2024 to 21 MAR 2024

EC-2, 22 FEB 2024 to 21 MAR 2024

MEARZ SEVEN DEPARTURE

(MEARZ7.MEARZ) 19MAY22

SHELBYVILLE, INDIANA
SHELBYVILLE MUNI (GEZ)



DEPARTURE ROUTE DESCRIPTION

DEPARTING ALL OTHER AUTHORIZED RUNWAYS: Climb on assigned heading to assigned altitude. Thence....

....expect RADAR vectors to join VHP R-013 to MEARZ then on transition or assigned route. Expect clearance to requested altitude ten minutes after departure.

BOILER TRANSITION (MEARZ.BVT): From over MEARZ on BVT R-133 to BVT VORTAC.

MARION TRANSITION (MEARZ.MZZ): From over MEARZ on MZZ R-227 to MZZ VOR/DME.

EC-2, 22 FEB 2024 to 21 MAR 2024

EC-2, 22 FEB 2024 to 21 MAR 2024

(ROCKY1.ROCKY) 23334
ROCKY ONE DEPARTURE

AL-5514 (FAA)

SHELBYVILLE MUNI (G/EZ)
 SHELBYVILLE, INDIANA

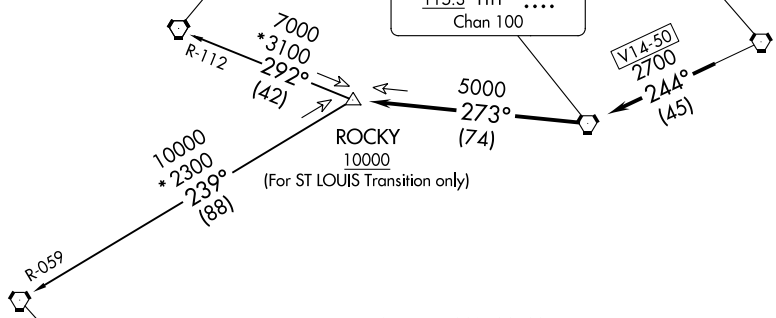
ASOS
 121.55
 INDIANAPOLIS DEP CON
 127.15 317.8

**TOP ALTITUDE:
 ASSIGNED BY ATC**

SPINNER
 112.7 SPI Chan 74

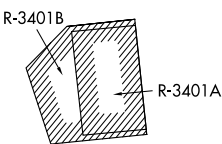
BRICKYARD
 116.3 VHP Chan 110

TERRE HAUTE
 115.3 TTH Chan 100



TAKEOFF MINIMUMS
 Rwy 1, 19: Standard.
 Rwy 9, 27: NA - Environmental.

ST LOUIS
 117.4 STL Chan 121



- NOTE: RADAR required.
- NOTE: Select appropriate localizer/DME frequency/channel prior to departure.
- NOTE: Turbojets accelerate to 250K until reaching 10000, if unable advise ATC.
- NOTE: Assigned to aircraft with a requested altitude of 11000 or above.

NOTE: Chart not to scale.



DEPARTURE ROUTE DESCRIPTION

DEPARTING ALL OTHER AUTHORIZED RUNWAYS: Climb on assigned heading to assigned altitude. Thence . . .

. . . expect RADAR vectors to join VHP R-244 to TTH VORTAC, then via TTH R-273 to ROCKY INT then via transition or assigned route. Expect clearance to requested altitude ten minutes after departure.

SPINNER TRANSITION (ROCKY1.SPI): From over ROCKY INT on SPI R-112 to SPI VORTAC.
ST LOUIS TRANSITION (ROCKY1.STL): From over ROCKY INT on STL R-059 to STL VORTAC.

ROCKY ONE DEPARTURE
(ROCKY1.ROCKY) 01FEB18

SHELBYVILLE, INDIANA
 SHELBYVILLE MUNI (G/EZ)

EC-2, 22 FEB 2024 to 21 MAR 2024

EC-2, 22 FEB 2024 to 21 MAR 2024