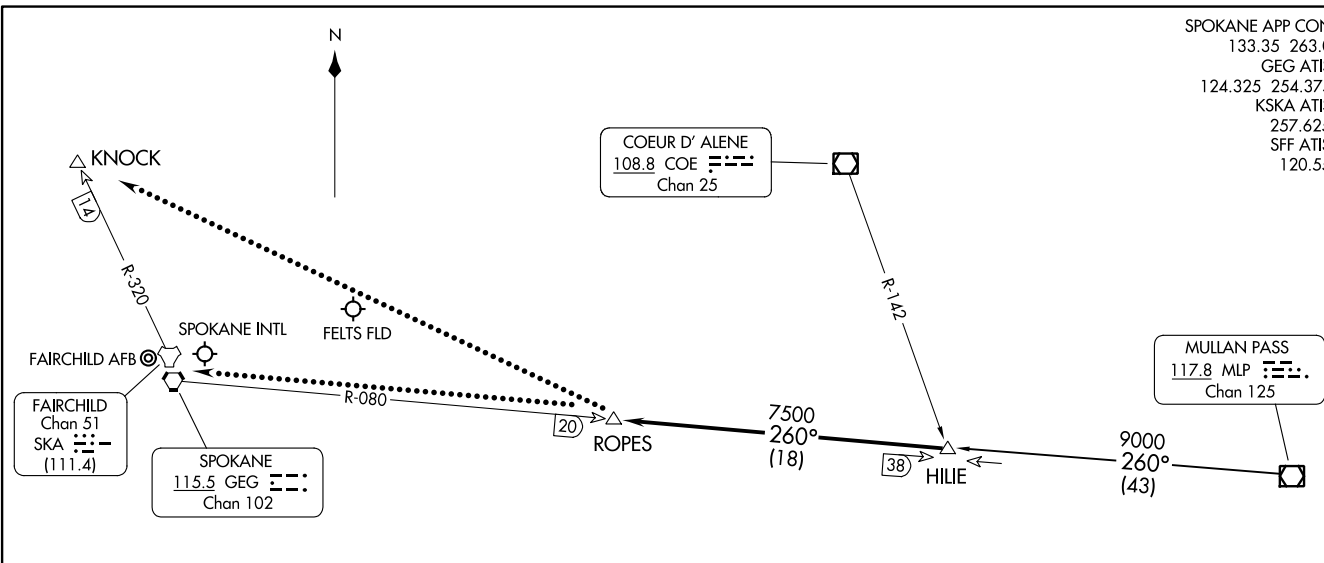


HILIE THREE ARRIVAL  
(HILIE;HILIE3) 15JUN23

(HILIE;HILIE3) 23334  
HILIE THREE ARRIVAL

SPOKANE APP CON  
133.35 263.0  
GEG ATIS  
124.325 254.375  
KSKA ATIS  
257.625  
SFF ATIS  
120.55



AL-403 (FAA)

SPOKANE, WASHINGTON

**ARRIVAL ROUTE DESCRIPTION**

MULLAN PASS TRANSITION (MLP.HILIE3): From over MLP VOR/DME on MLP R-260 to HILIE. Thence. . .

. . . From over HILIE on SPOKANE VORTAC (GEG) R-080 to ROPES. Expect RADAR vectors to final approach course.

LOST COMMUNICATIONS

After ROPES:

LANDING SPOKANE INTL or FELTS FLD: Proceed to GEG VORTAC on GEG R-080, maintain last assigned altitude to GEG.

LANDING FAIRCHILD AFB: Proceed to KNOCK direct, maintain last assigned altitude to KNOCK.

NOTE: DME and RADAR required.

NOTE: Chart not to scale.

SPOKANE, WASHINGTON

### ARRIVAL ROUTE DESCRIPTION

EPHRATA TRANSITION (EPH.ZOOMR2): From over EPH VORTAC on EPH R-065 to ZOOMR. Thence. . . .

MOSES LAKE TRANSITION (MWH.ZOOMR2): From over MWH VOR/DME on MWH R-054 to ZOOMR. Thence. . . .

. . . . From over ZOOMR on SPOKANE VORTAC (GEG) R-239 to GANGS. Expect RADAR vectors to final approach course.

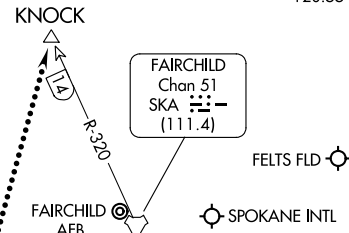
### LOST COMMUNICATIONS

After GANGS:

LANDING SPOKANE INTL or FELTS FLD: Proceed to GEG VORTAC on GEG R-239, maintain last assigned altitude to GEG.

LANDING FAIRCHILD AFB: Proceed to KNOCK DME fix direct, maintain last assigned altitude to KNOCK.

SPOKANE APP CON	123.75	282.25
GEG ATIS	124.325	254.375
KSKA ATIS	257.625	
SFF ATIS	120.55	



SPOKANE  
115.5 GEG  
Chan 102

PULLMAN  
117.15 PUW  
Chan 118(Y)

EPHRATA  
112.6 EPH  
Chan 73

MOSES LAKE  
115.0 MWH  
Chan 97

YAKIMA  
116.0 YKM  
Chan 107

ZOOMR  
509°  
(16)

5000  
065°  
(46)

5000  
054°  
(43)

GANGS  
13

R-296

R-310

NOTE: DME and RADAR required.

NOTE: Chart not to scale.

ZOOMR TWO ARRIVAL  
(ZOOMR.ZOOMR2) 15JUN23

SPOKANE, WASHINGTON

ZOOMR TWO ARRIVAL  
(ZOOMR.ZOOMR2) 23334

AL-403 (FAA)

SPOKANE, WASHINGTON