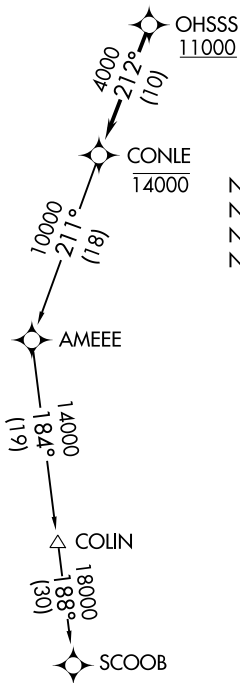


# CONLE FOUR DEPARTURE (RNAV)

AWOS-3PT  
128.275  
CLNC DEL  
121.6  
UNICOM  
123.075 (CTAF)  
POTOMAC DEP CON  
128.7 307.9

**TOP ALTITUDE:  
ASSIGNED BY ATC**



NOTE: RNAV 1.  
NOTE: DME/DME/IRU or GPS required.  
NOTE: RADAR required.  
NOTE: For turbojet aircraft only.

TAKEOFF MINIMUMS:  
Rwy 14, 32: Standard.

NOTE: Chart not to scale.



## DEPARTURE ROUTE DESCRIPTION

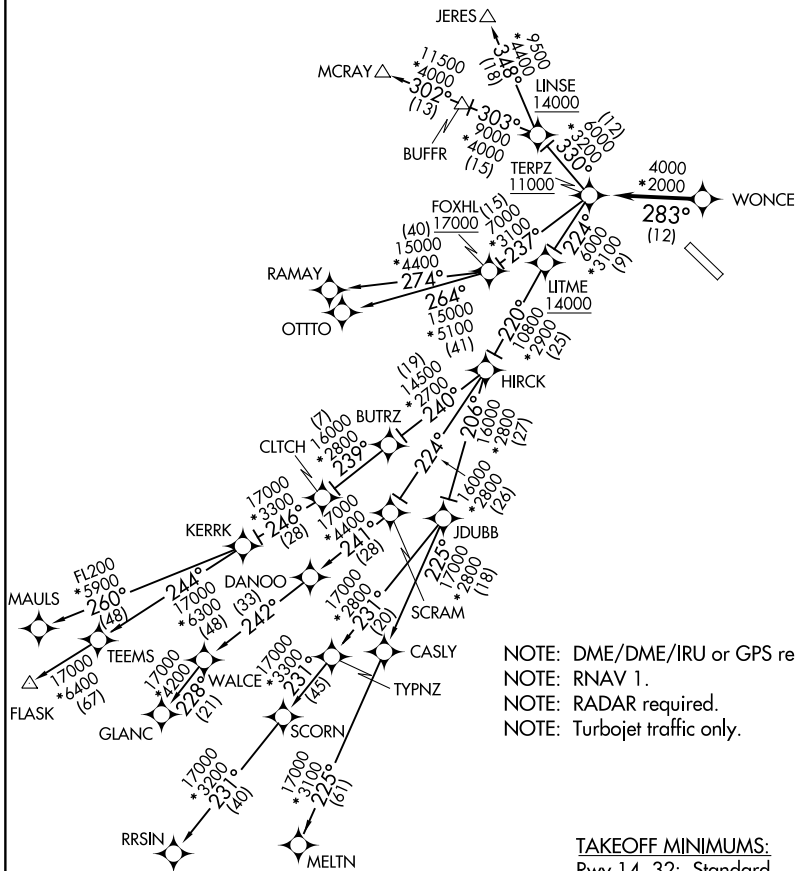
Climb on assigned heading to ATC assigned altitude, for vectors to cross OHSSS at or above 11000, then on track 212° to cross CONLE at or below 14000, then on assigned transition. Expect filed altitude within 10 minutes after departure.

COLIN TRANSITION (CONLE4.COLIN)  
SCOOB TRANSITION (CONLE4.SCOOB)

# TERPZ SEVEN DEPARTURE (RNAV)

AWOS-3PT  
 128.275  
 CLNC DEL  
 121.6  
 UNICOM  
 123.075 (CTAF)  
 POTOMAC DEP CON  
 128.7 307.9

**TOP ALTITUDE:**  
**RAMAY, OTTTO, MAULS, FLASK,**  
**RRSIN, GLANC, MELTN**  
**TRANSITIONS: 17000**  
**JERES, MCRAJ TRANSITIONS:**  
**16000**



TAKEOFF MINIMUMS:  
 Rwy 14, 32: Standard.

NOTE: Chart not to scale.

# TERPZ SEVEN DEPARTURE (RNAV)

NE-3, 22 FEB 2024 to 21 MAR 2024

NE-3, 22 FEB 2024 to 21 MAR 2024

# TERPZ SEVEN DEPARTURE (RNAV)



## DEPARTURE ROUTE DESCRIPTION

Fly heading and maintain altitude assigned by ATC, expect RADAR vectors to WONCE, then on track 283° to cross TERPZ at or above 11000, thence. . . .

. . . on assigned transition: Departures on JERES and MCRA Y transitions maintain 16000. Departures on RAMAY, OTTTO, MAULS, FLASK, MELTN, RRSIN, GLANC transitions maintain 17000, expect further clearance to filed altitude within 10 minutes after departure.

- FLASK TRANSITION (TERPZ7.FLASK)
- GLANC TRANSITION (TERPZ7.GLANC)
- JERES TRANSITION (TERPZ7.JERES)
- MAULS TRANSITION (TERPZ7.MAULS)
- MCRA Y TRANSITION (TERPZ7.MCRA Y)
- MELTN TRANSITION (TERPZ7.MELTN)
- OTTTO TRANSITION (TERPZ7.OTTTO)
- RAMAY TRANSITION (TERPZ7.RAMAY)
- RRSIN TRANSITION (TERPZ7.RRSIN)

NE-3, 22 FEB 2024 to 21 MAR 2024

NE-3, 22 FEB 2024 to 21 MAR 2024