

WAAS CH <b>45819</b> <b>W27A</b>	APP CRS <b>275°</b>	Rwy Idg TDZE Apt Elev	<b>5005</b> <b>752</b> <b>752</b>
--	------------------------	-----------------------------	---

# RNAV (GPS) RWY 27

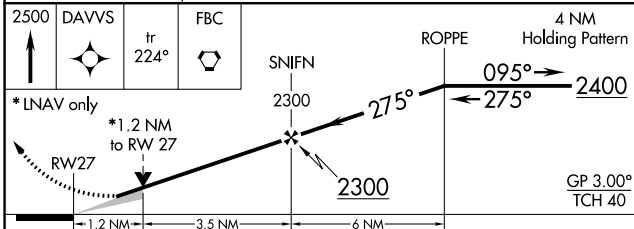
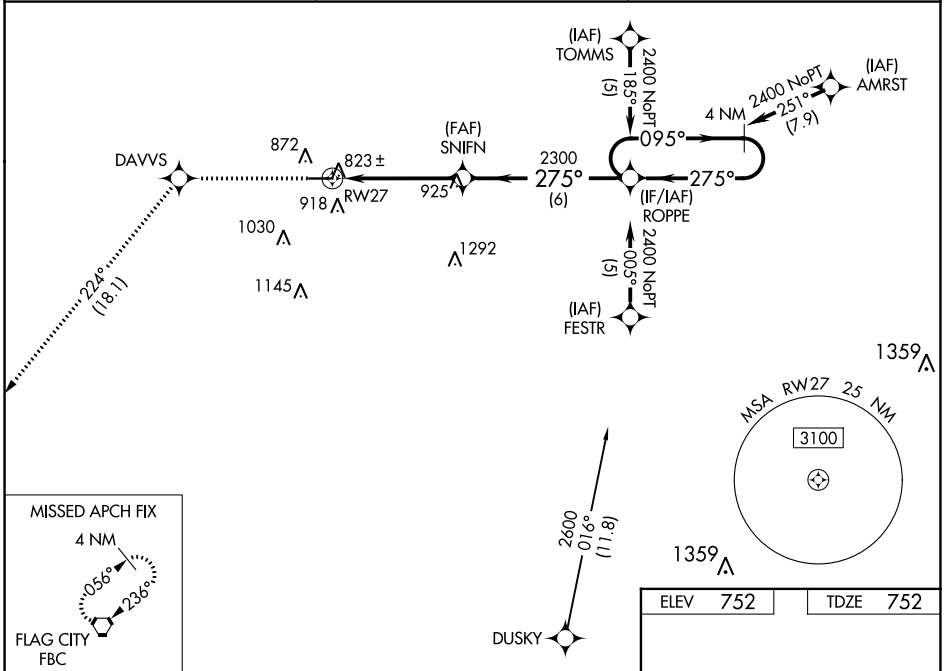
FOSTORIA METRO (FZI)

RNP APCH.

**NA** For uncompensated Baro-VNAV systems, LNAV/VNAV NA below -16°C (4°F) or above 54°C (130°F). Baro-VNAV and VDP NA when using Findlay altimeter setting. When local altimeter setting not received, use Findlay altimeter setting and increase all DA 47 feet and all MDA 60 feet, increase LNAV/VNAV all Cats and Circling Cat C visibility ¼ mile.

MISSED APPROACH: Climb to 2500 direct DAVVS and on track 224° to FBC VORTAC and hold.

AWOS-3 <b>124.625</b>	TOLEDO APP CON <b>126.1 307.0</b>	UNICOM <b>122.7 (CTAF) 0</b>
--------------------------	--------------------------------------	---------------------------------



ELEV 752	TDZE 752
----------	----------

CATEGORY	A	B	C	D
LPV DA	1002-1	250 (300-1)		NA
LNAV/VNAV DA	1131-1¼	379 (400-1¼)		NA
LNAV MDA	1160-1	408 (500-1)	1160-1¼ 408 (500-1¼)	NA
CIRCLING	1280-1 528 (600-1)	1320-1 568 (600-1)	1400-1¾ 648 (700-1¾)	NA

REIL Rwy 9 and 27 0  
MRL Rwy 9-27 0

EC-2, 22 FEB 2024 to 21 MAR 2024

EC-2, 22 FEB 2024 to 21 MAR 2024

WAAS CH <b>53529</b> <b>W09A</b>	APP CRS <b>095°</b>	Rwy Idg <b>5005</b> TDZE <b>752</b> Apt Elev <b>752</b>
--	------------------------	---

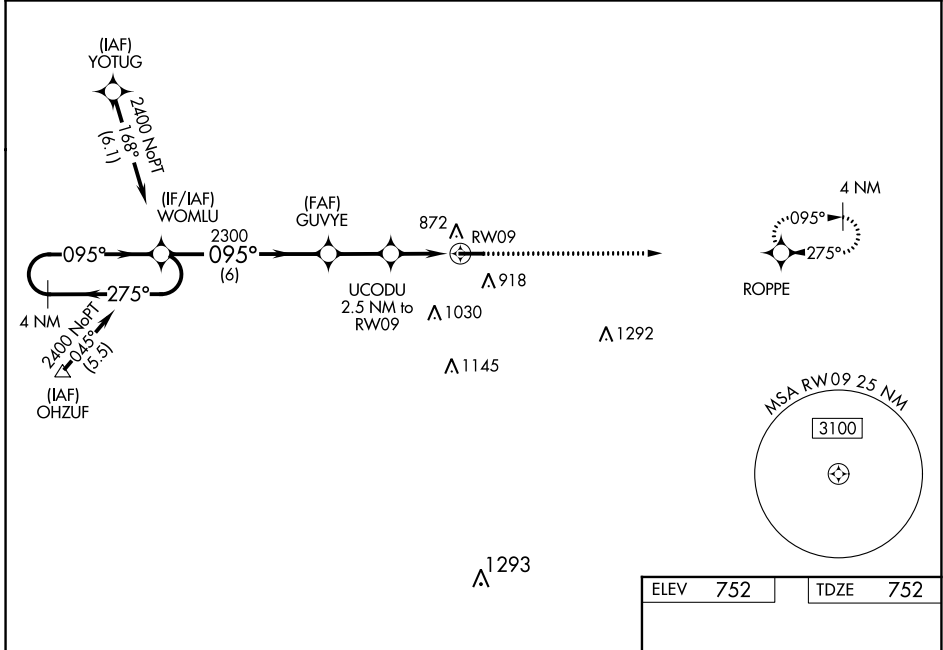
# RNAV (GPS) RWY 9

FOSTORIA METRO (F'ZI)

**⚠** DME/DME RNP-0.3 NA. Visibility reduction by helicopters NA. Baro-VNAV NA when using Findlay altimeter setting. For uncompensated Baro-VNAV systems, LNAV/VNAV NA below -16°C (4°F) or above 54°C (130°F). When local altimeter setting not received, use Findlay altimeter setting and increase LPV DA to 1122 feet and all visibilities 1/8 SM; increase LNAV/VNAV DA to 1121 feet and all visibilities 1/8 SM; increase all MDAs 60 feet and LNAV Cat C visibility 1/8 SM, increase Circling Cat C visibility 1/4 SM. When VGSI inop, Straight-in/Circling Rwy 9 procedure NA at night.

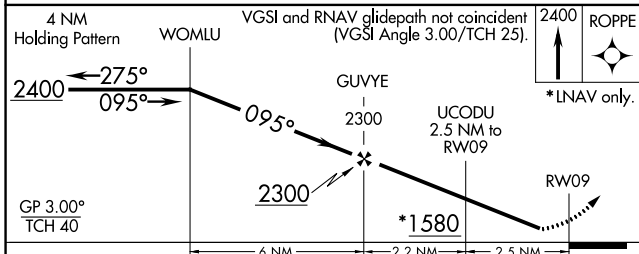
**⚠** MISSED APPROACH: Climb to 2400 direct ROPPE and hold.

AWOS-3 <b>124.625</b>	TOLEDO APP CON <b>126.1 307.0</b>	UNICOM <b>122.7 (CTAF) 0</b>
--------------------------	--------------------------------------	---------------------------------



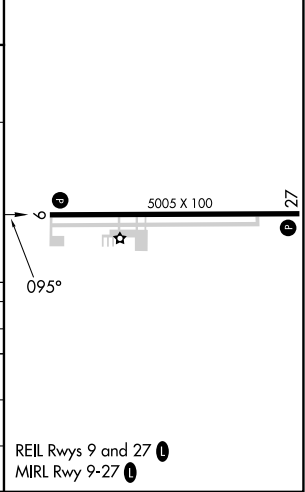
EC-2, 22 FEB 2024 to 21 MAR 2024

EC-2, 22 FEB 2024 to 21 MAR 2024



ELEV 752	TDZE 752
----------	----------

CATEGORY	A	B	C	D
LPV DA	1075-1 1/8	323 (400-1 1/8)		NA
LNAV/VNAV DA	1074-1 1/8	322 (400-1 1/8)		NA
LNAV MDA	1180-1	428 (500-1)	1180-1 1/4 428 (500-1 1/4)	NA
CIRCLING	1280-1 528 (600-1)	1320-1 568 (600-1)	1400-1 3/4 648 (700-1 3/4)	NA

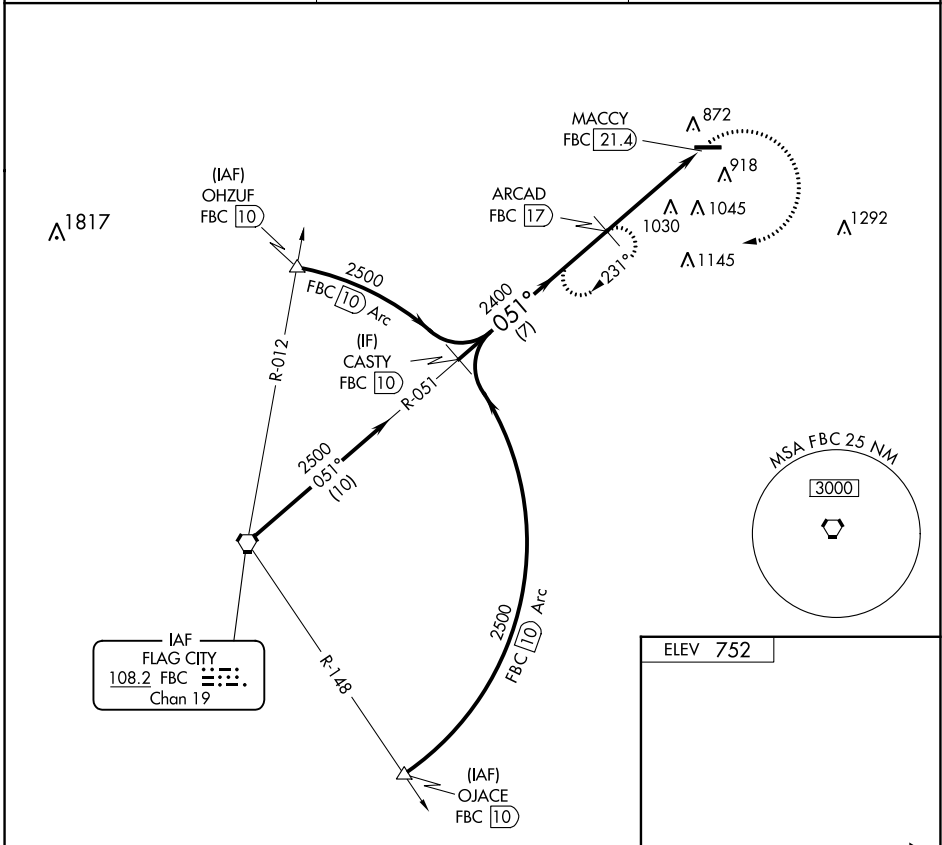


VORTAC FBC <b>108.2</b> Chan <b>19</b>	APP CRS <b>051°</b>	Rwy Idg TDZE Apt Elev	<b>N/A</b> <b>N/A</b> <b>752</b>
--	------------------------	-----------------------------	--

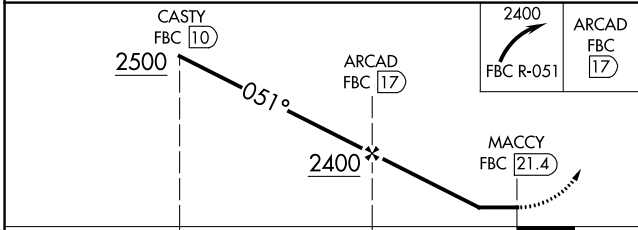
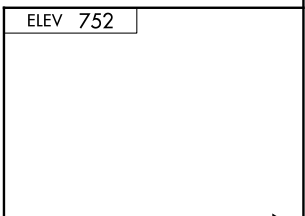
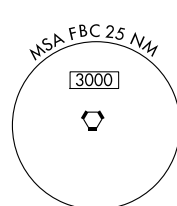
**VOR-A**  
FOSTORIA METRO (F'ZI)

DME required.		MISSED APPROACH: Climbing right turn to 2400 on FBC VORTAC R-051 to ARCAD/FBC 17 DME and hold.
▼ ▲ NA	When local altimeter setting not received, use Findlay altimeter setting and increase all MDA 60 feet, and increase Cat C visibility ¼ mile.	

AWOS-3 <b>124.625</b>	TOLEDO APP CON <b>126.1 307.0</b>	UNICOM <b>122.7 (CTAF) 0</b>
--------------------------	--------------------------------------	---------------------------------



IAF  
FLAG CITY  
108.2 FBC  
Chan 19



CATEGORY	A	B	C	D	FAF to MAP 4.4 NM					
CIRCLING	1400-1	1400-1¼	1400-1¾	NA	Knots	60	90	120	150	180
	648 (700-1)	648 (700-1¼)	648 (700-1¾)		Min:Sec	4:24	2:56	2:12	1:46	1:28

EC-2, 22 FEB 2024 to 21 MAR 2024

EC-2, 22 FEB 2024 to 21 MAR 2024