

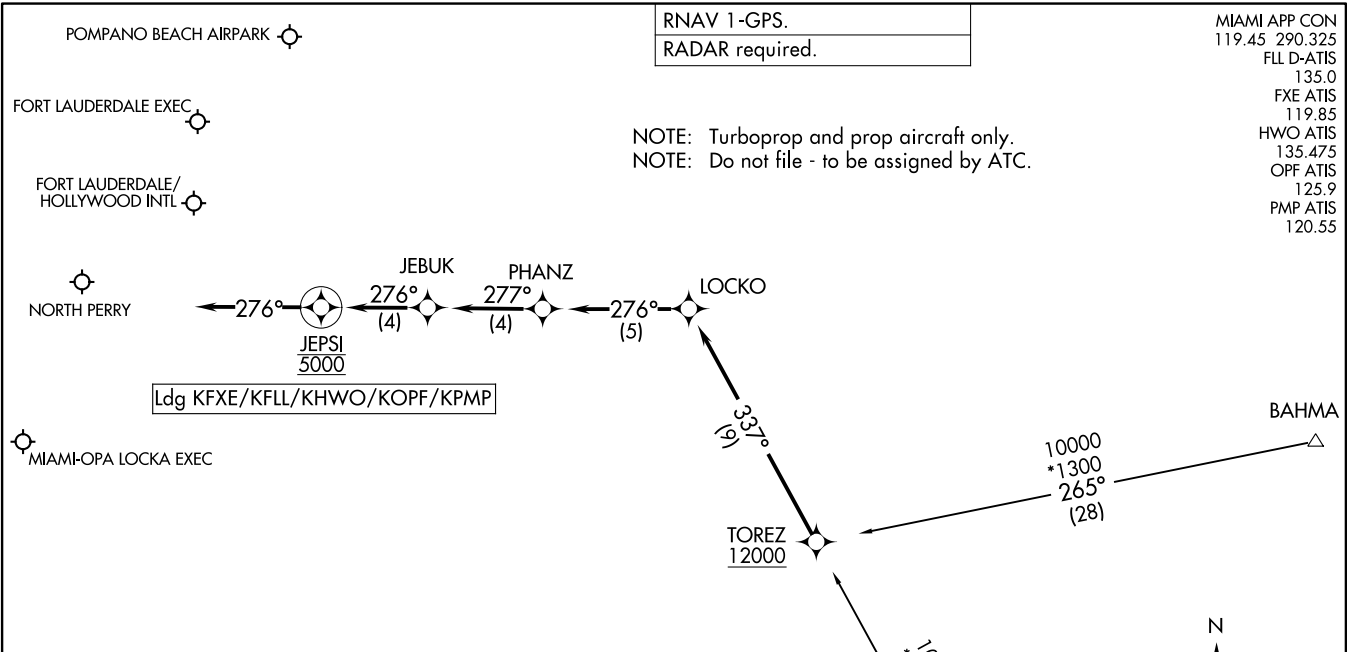
TOREZ ONE ARRIVAL (RNAV)
(TOREZ.TOREZ1) 15JUN23

(TOREZ.TOREZ1) 23166
TOREZ ONE ARRIVAL (RNAV)

RNAV 1-GPS.
RADAR required.

MIAMI APP CON 119.45 290.325
FLL D-ATIS 135.0
FXE ATIS 119.85
HWO ATIS 135.475
OPF ATIS 125.9
PMP ATIS 120.55

NOTE: Turboprop and prop aircraft only.
NOTE: Do not file - to be assigned by ATC.



ARRIVAL ROUTE DESCRIPTION

BAHMA TRANSITION (BAHMA.TOREZ1)
MKERS TRANSITION (MKERS.TOREZ1)

LANDING ALL AIRPORTS: From TOREZ on track 337° to LOCKO, then on track 276° to PHANZ, then on track 277° to JEBUK, then on track 276° to cross JEPSI at 5000, then on track 276°. Expect RADAR vectors to final approach course.

NOTE: Chart not to scale.

MIAMI, FLORIDA

MIAMI, FLORIDA

AL-256 (FAA)

DVALL THREE ARRIVAL

MIAMI, FLORIDA

MIAMI APP CON
 120.5 350.225
 FLL D-ATIS
 135.0
 FXE ATIS
 119.85
 KHST ATIS ★
 132.275 269.9
 MIA D-ATIS
 119.15
 OPF ATIS
 125.9
 PMP ATIS
 120.55
 TMB ATIS
 124.0

WEVER
 N25° 33.14' - W80° 54.82'
**TURBOJET VERTICAL NAVIGATION
 PLANNING INFORMATION**

Miami Intl landing East: Expect clearance to cross at 10000' and 250K.
 Miami Intl landing West: Expect clearance to cross at 14000' and 250K.

LA BELLE
 110.4 LBV
 Chan 41

POMPANO BEACH AIR PARK
 FORT LAUDERDALE EXEC
 FORT LAUDERDALE-HOLLYWOOD INTL
 MIAMI-OPA LOCKA EXEC

DOLPHIN
 113.9 DHP
 Chan 86
 N25° 48.00' - W80° 20.94'

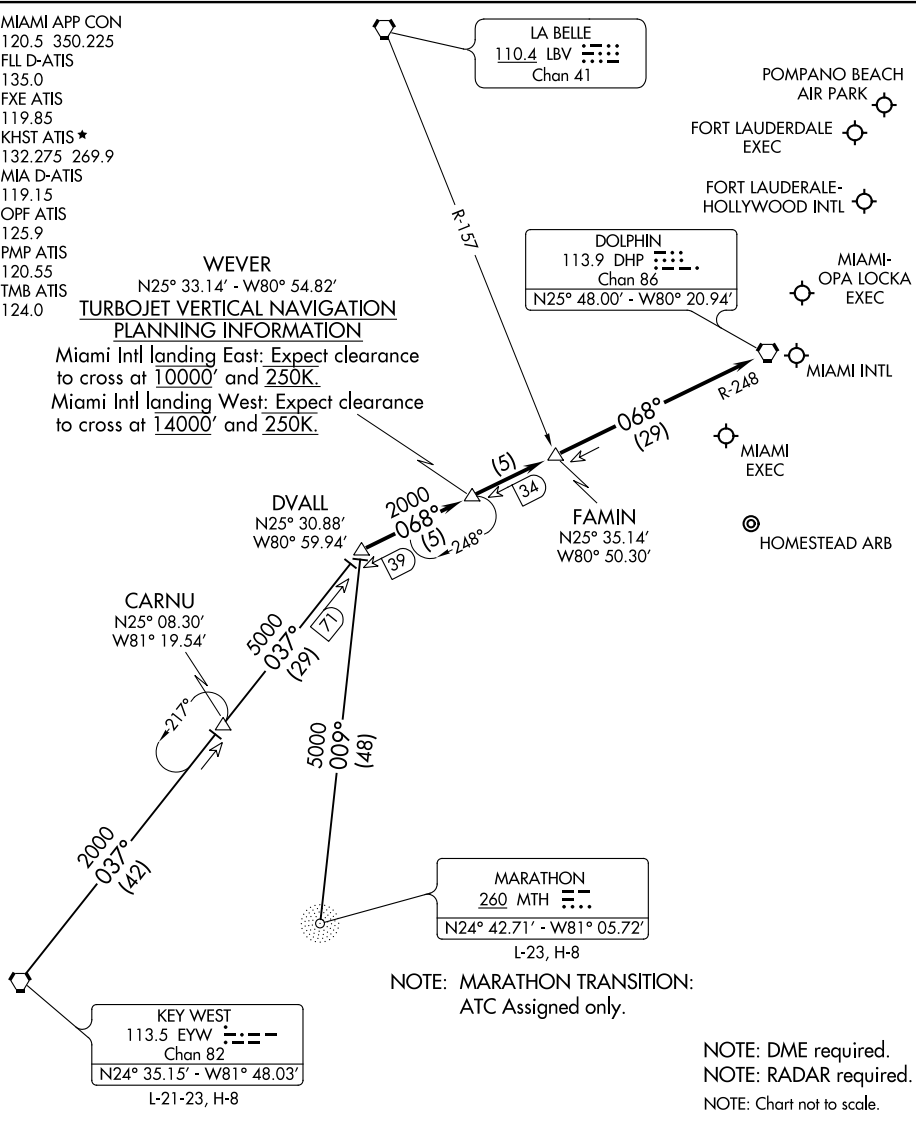
FAMIN
 N25° 35.14' - W80° 50.30'

MARATHON
 260 MTH
 L-23, H-8
 N24° 42.71' - W81° 05.72'

KEY WEST
 113.5 EYW
 Chan 82
 N24° 35.15' - W81° 48.03'
 L-21-23, H-8

NOTE: MARATHON TRANSITION:
 ATC Assigned only.

NOTE: DME required.
 NOTE: RADAR required.
 NOTE: Chart not to scale.



SE-3, 22 FEB 2024 to 21 MAR 2024

SE-3, 22 FEB 2024 to 21 MAR 2024

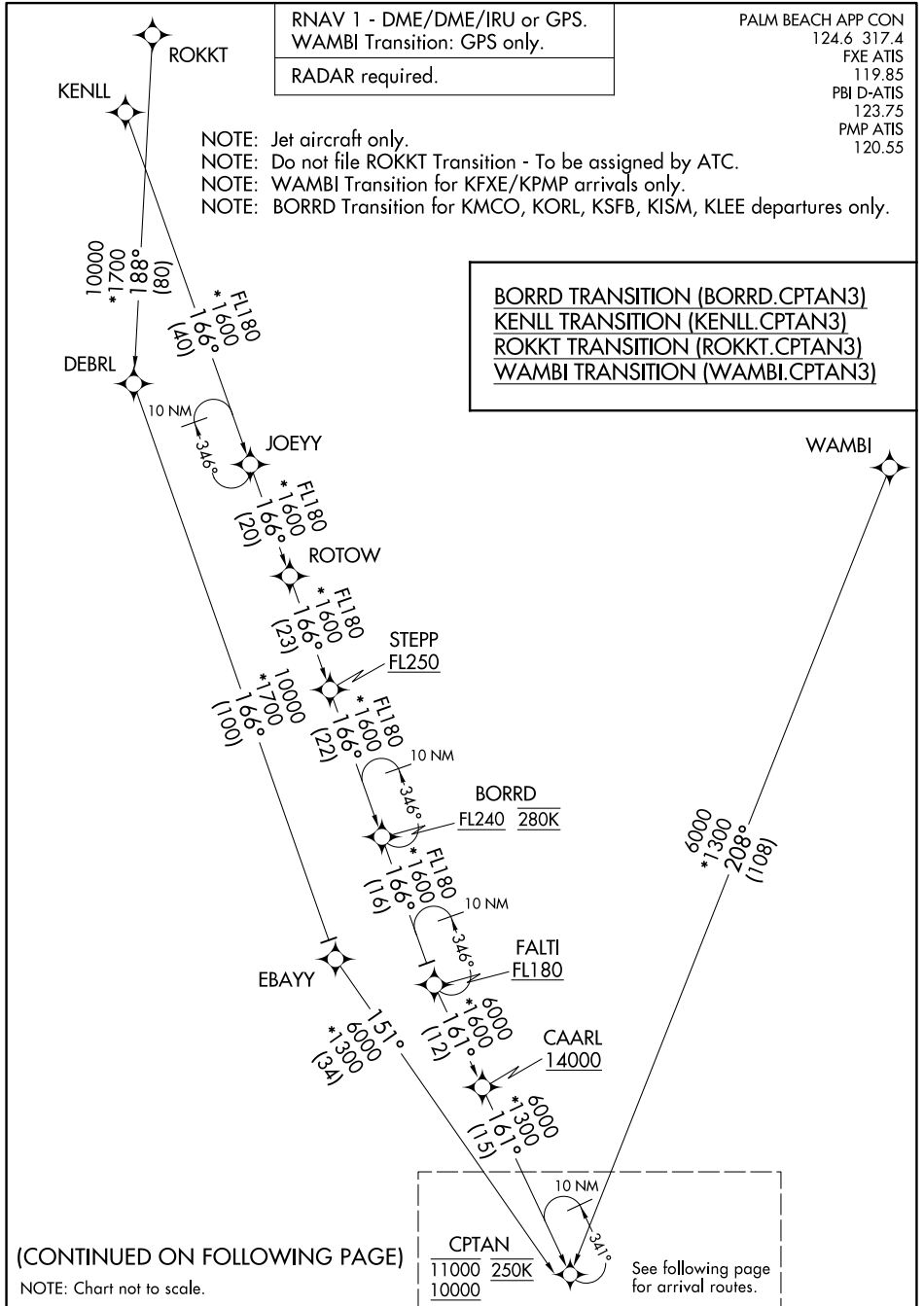
DVALL THREE ARRIVAL

MIAMI, FLORIDA

KEY WEST TRANSITION (EYW.DVALL3): From over EYW VORTAC on EYW R-037 to DVALL INT. Thence. . . .
MARATHON TRANSITION (MTH.DVALL3): From over MTH NDB on bearing 009° to DVALL INT. Thence. . . .
 . . . From over DVALL INT via DHP R-248 to DHP VORTAC. Expect RADAR vectors to final approach course after FAMIN INT.

CPTAN THREE ARRIVAL (RNAV) Transition Routes

WEST PALM BEACH, FLORIDA



SE-3, 22 FEB 2024 to 21 MAR 2024

SE-3, 22 FEB 2024 to 21 MAR 2024

CPTAN THREE ARRIVAL (RNAV) Transition Routes

WEST PALM BEACH, FLORIDA

CPTAN THREE ARRIVAL (RNAV) Arrival Routes

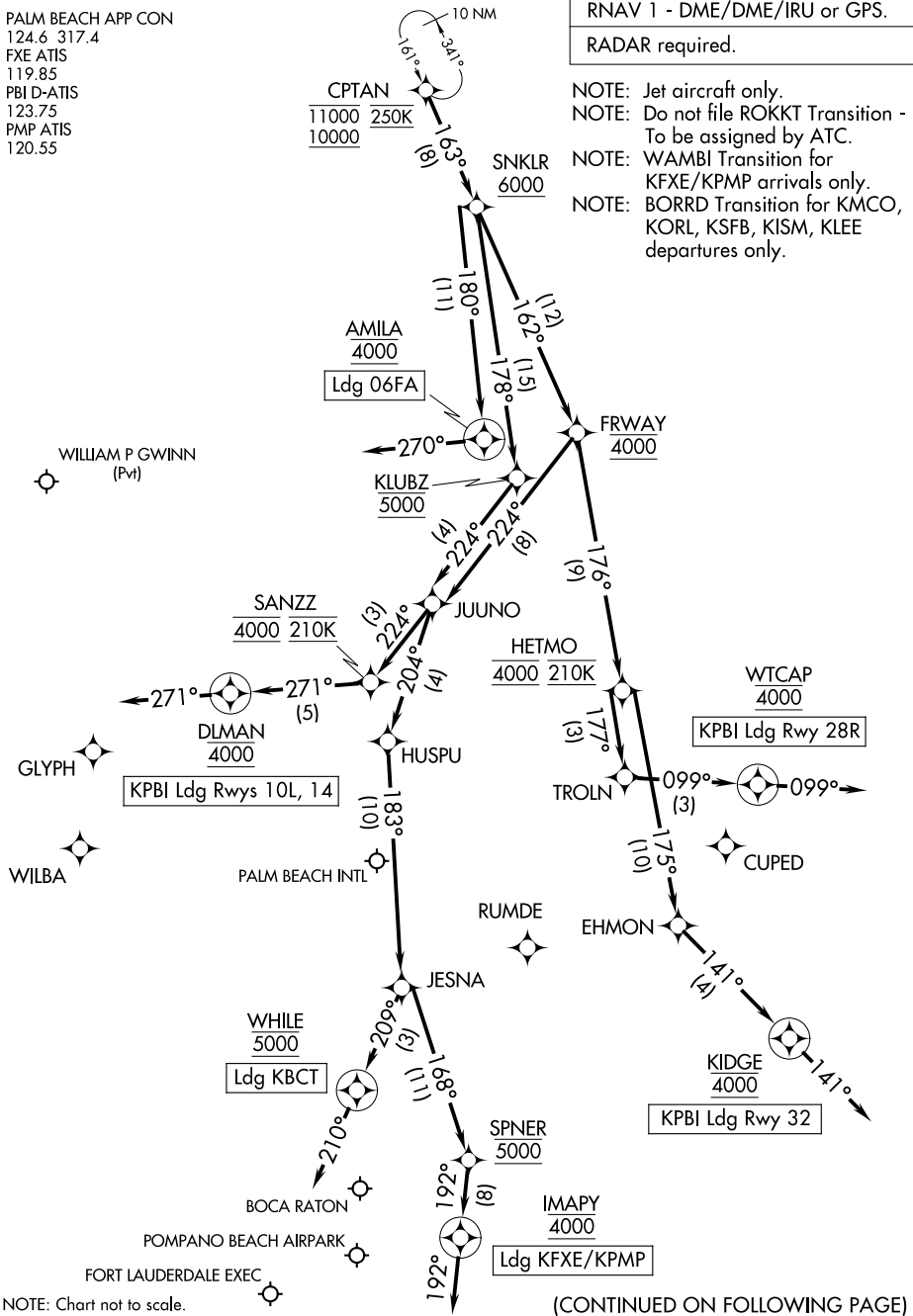
WEST PALM BEACH, FLORIDA

PALM BEACH APP CON
124.6 317.4
FXE ATIS
119.85
PBI D-ATIS
123.75
PMP ATIS
120.55

RNAV 1 - DME/DME/IRU or GPS.

RADAR required.

- NOTE: Jet aircraft only.
- NOTE: Do not file ROKKT Transition - To be assigned by ATC.
- NOTE: WAMBI Transition for KFEX/KPMP arrivals only.
- NOTE: BORRD Transition for KMCO, KORL, KSFB, KISM, KLEE departures only.



NOTE: Chart not to scale.

(CONTINUED ON FOLLOWING PAGE)

CPTAN THREE ARRIVAL (RNAV) Arrival Routes

WEST PALM BEACH, FLORIDA

ARRIVAL ROUTE DESCRIPTION

KPBI: From CPTAN on track 163° to cross SNKLR at or above 6000.

LANDING KPBI RUNWAYS 10L, 14: From SNKLR on track 162° to cross FRWAY at 4000, then on track 224° to JUUNO, then on track 224° to cross SANZZ at 4000 and at 210K, then on track 271° to cross DLMAN at 4000, then on track 271°. Expect RADAR vectors to final approach course.

LANDING KPBI RUNWAY 28R: From SNKLR on track 162° to cross FRWAY at 4000, then on track 176° to cross HETMO at 4000 and at 210K, then on track 177° to TROLN, then on track 099° to cross WTCAP at 4000, then on track 099°. Expect RADAR vectors to final approach course.

LANDING KPBI RUNWAY 32: From SNKLR on track 162° to cross FRWAY at 4000, then on track 176° to cross HETMO at 4000 and at 210K, then on track 175° to EHMON, then on track 141° to cross KIDGE at 4000, then on track 141°. Expect RADAR vectors to final approach course.

LANDING 06FA: From CPTAN on track 163° to cross SNKLR at or above 6000, then on track 180° to cross AMILA at 4000, then on heading 270°. Expect RADAR vectors to final approach course.

LANDING KBCT: From CPTAN on track 163° to cross SNKLR at or above 6000, then on track 178° to cross KLUBZ at 5000, then on track 224° to JUUNO, then on track 204° to HUSPU, then on track 183° to JESNA, then on track 209° to cross WHILE at 5000, then on heading 210°. Expect RADAR vectors to final approach course.

LANDING KFXE/KPMP: From CPTAN on track 163° to cross SNKLR at or above 6000, then on track 178° to cross KLUBZ at 5000, then on track 224° to JUUNO, then on track 204° to HUSPU, then on track 183° to JESNA, then on track 168° to cross SPNER at 5000, then on track 192° to cross IMAPY at 4000, then on track 192°. Expect RADAR vectors to final approach course.

SE-3, 22 FEB 2024 to 21 MAR 2024

SE-3, 22 FEB 2024 to 21 MAR 2024

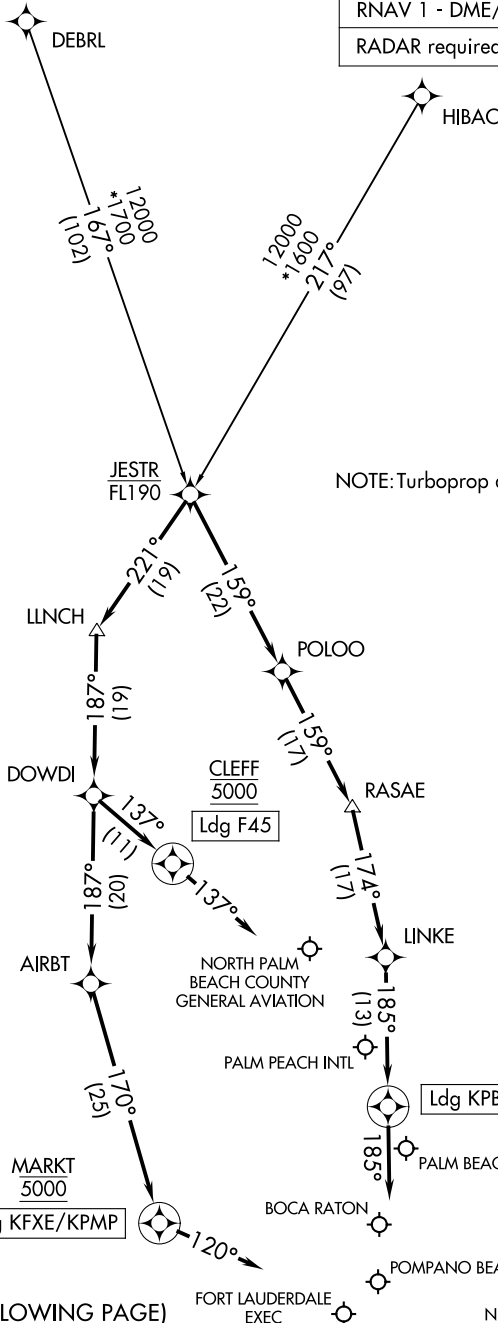
JESTR ONE ARRIVAL (RNAV)

WEST PALM BEACH, FLORIDA

PALM BEACH APP CON
 124.6 317.4
 FXE ATIS
 119.85
 PBI D-ATIS
 123.75
 PMP ATIS
 120.55

RNAV 1 - DME/DME/IRU or GPS.

RADAR required.



NOTE: Turboprop aircraft only.

(NARRATIVE ON FOLLOWING PAGE)

NOTE: Chart not to scale.

JESTR ONE ARRIVAL (RNAV)

WEST PALM BEACH, FLORIDA

ARRIVAL ROUTE DESCRIPTION

DEBRL TRANSITION (DEBRL.JESTR1)

HIBAC TRANSITION (HIBAC.JESTR1)

LANDING KPBI/KLNA/KBCT: From JESTR on track 159° to POLOO, then on track 159° to RASAE, then on track 174° to LINKE, then on track 185° to cross JESNA at 5000, then on heading 185° or as assigned by ATC. Expect RADAR vectors to final approach course.

LANDING F45: From JESTR on track 221° to LLNCH, then on track 187° to DOWDI, then on track 137° to cross CLEFF at 5000, then on track 137°. Expect RADAR vectors to final approach course.

LANDING KFXE/KPMP: From JESTR on track 221° to LLNCH, then on track 187° to DOWDI, then on track 187° to AIRBT, then on track 170° to cross MARKET at 5000, then on heading 120° or as assigned by ATC. Expect RADAR vectors to final approach course.

SE-3, 22 FEB 2024 to 21 MAR 2024

SE-3, 22 FEB 2024 to 21 MAR 2024

BHHIA THREE ARRIVAL (RNAV) Transition Routes

FORT LAUDERDALE, FLORIDA

MIAMI APP CON
120.5 350.225
FLL D-ATIS
135.0
FXE ATIS
119.85
OPF ATIS
125.9
PMP ATIS
120.55

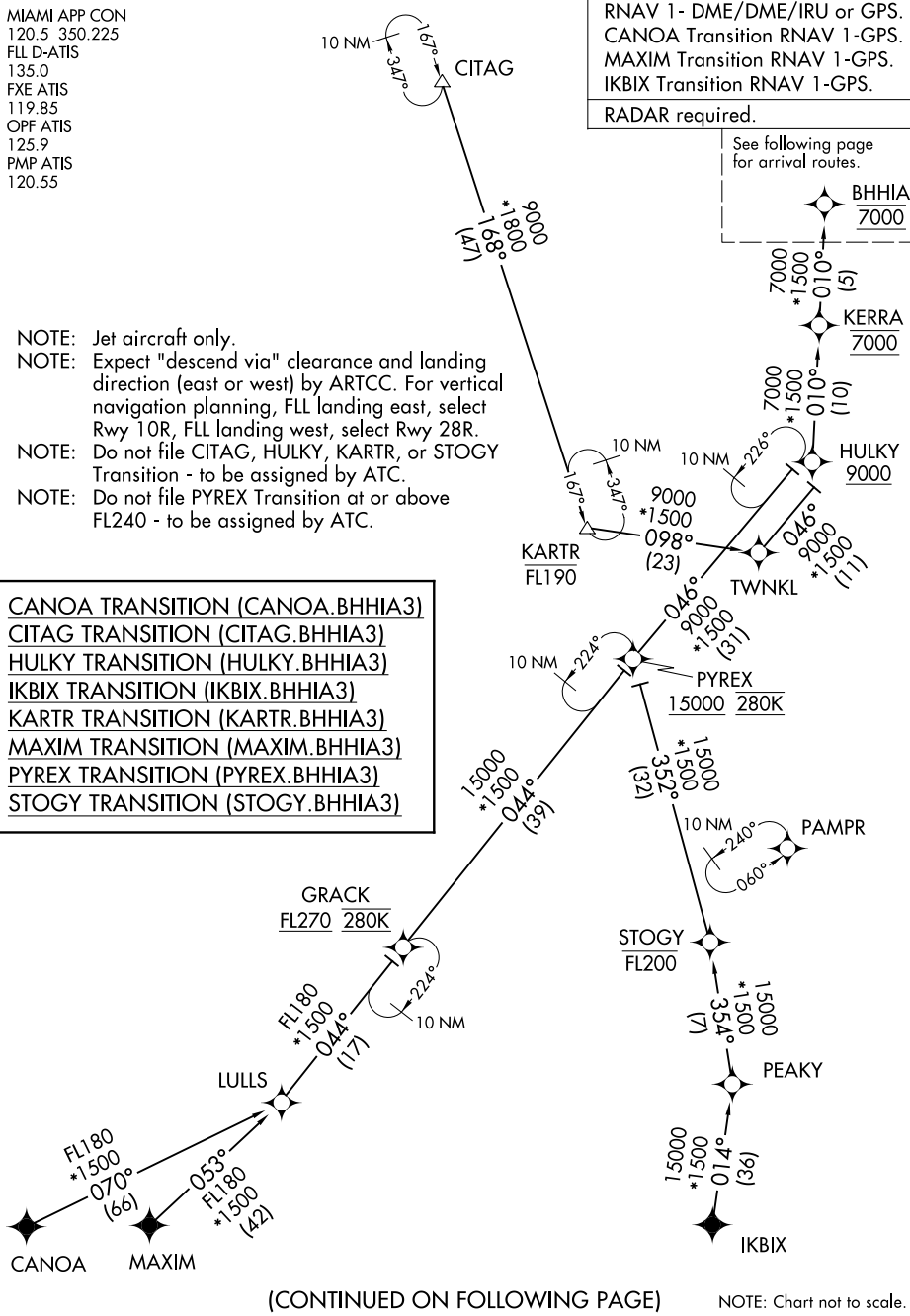
RNAV 1 - DME/DME/IRU or GPS.
CANOA Transition RNAV 1-GPS.
MAXIM Transition RNAV 1-GPS.
IKBIX Transition RNAV 1-GPS.

RADAR required.

See following page
for arrival routes.

- NOTE: Jet aircraft only.
- NOTE: Expect "descend via" clearance and landing direction (east or west) by ARTCC. For vertical navigation planning, FLL landing east, select Rwy 10R, FLL landing west, select Rwy 28R.
- NOTE: Do not file CITAG, HULKY, KARTR, or STOGY Transition - to be assigned by ATC.
- NOTE: Do not file PYREX Transition at or above FL240 - to be assigned by ATC.

- CANOA TRANSITION (CANOA.BHHIA3)
- CITAG TRANSITION (CITAG.BHHIA3)
- HULKY TRANSITION (HULKY.BHHIA3)
- IKBIX TRANSITION (IKBIX.BHHIA3)
- KARTR TRANSITION (KARTR.BHHIA3)
- MAXIM TRANSITION (MAXIM.BHHIA3)
- PYREX TRANSITION (PYREX.BHHIA3)
- STOGY TRANSITION (STOGY.BHHIA3)



(CONTINUED ON FOLLOWING PAGE)

NOTE: Chart not to scale.

SE-3, 22 FEB 2024 to 21 MAR 2024

SE-3, 22 FEB 2024 to 21 MAR 2024

BHHIA THREE ARRIVAL (RNAV) Transition Routes

FORT LAUDERDALE, FLORIDA

BHHIA THREE ARRIVAL (RNAV) (BHHIA, BHHIA3) 03NOV22

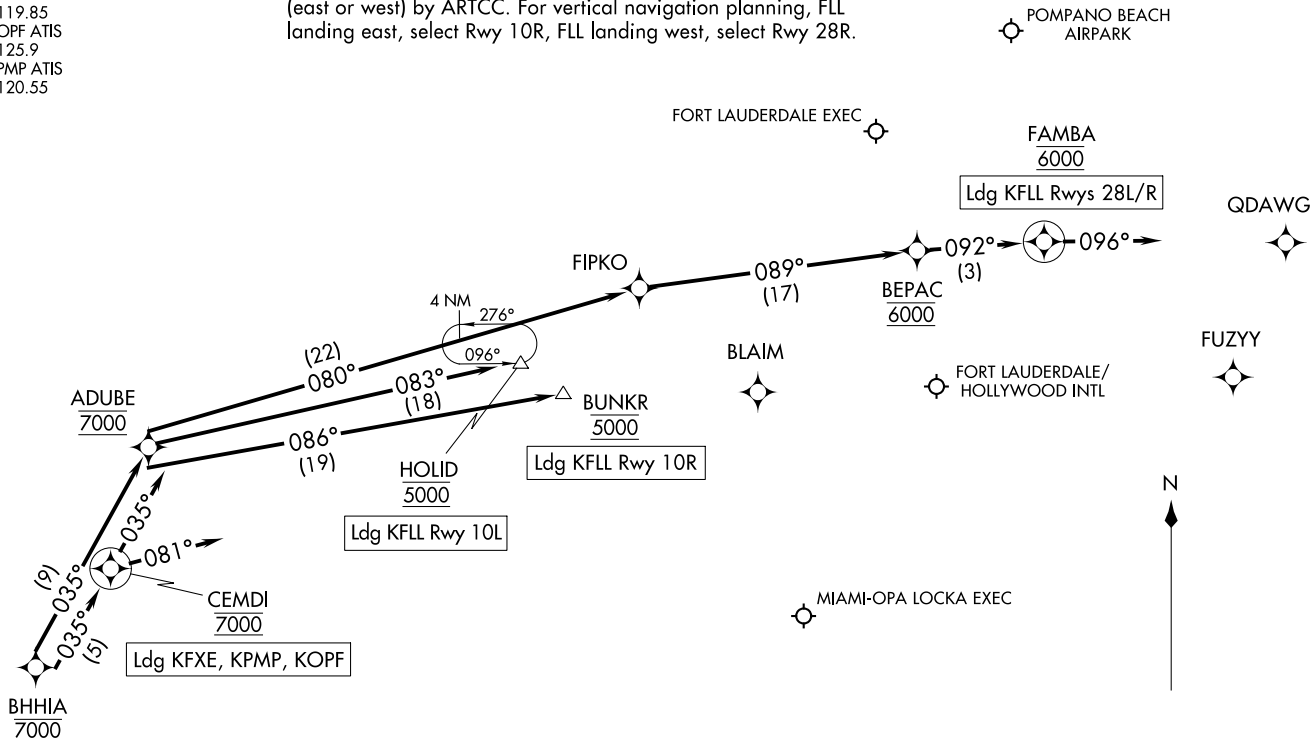
BHHIA THREE ARRIVAL (RNAV) Arrival Routes

FORT LAUDERDALE, FLORIDA

MIAMI APP CON
120.5 350.225
FLL D-ATIS
135.0
FXE ATIS
119.85
OPF ATIS
125.9
PMP ATIS
120.55

NOTE: Jet aircraft only.
NOTE: Expect "descend via" clearance and landing direction (east or west) by ARTCC. For vertical navigation planning, FLL landing east, select Rwy 10R, FLL landing west, select Rwy 28R.

RNAV 1-DME/DME/IRU or GPS.
RADAR required.



(NARRATIVE ON FOLLOWING PAGE)

NOTE: Chart not to scale.

(BHHIA, BHHIA3) 22307

AL:744 (FAA) Arrival Routes

FORT LAUDERDALE, FLORIDA

ARRIVAL ROUTE DESCRIPTION

KFLL: From BHHIA on track 035° to cross ADUBE at 7000.

LANDING KFLL RUNWAY 10L: From ADUBE on track 083° to cross HOLID at 5000. Expect ILS or LOC Rwy 10L approach.

LANDING KFLL RUNWAY 10R: From ADUBE on track 086° to cross BUNKR at 5000. Expect ILS or LOC Rwy 10R approach.

LANDING KFLL RUNWAYS 28L/R: From ADUBE on track 080° to FIPKO, then on track 089° to cross BEPAC at 6000, then on track 092° to cross FAMBA at 6000, then on track 096°. Expect RADAR vectors to final approach course.

LANDING KFXE/KPMP: From BHHIA on track 035° to cross CEMDI at 7000, then on track 035°. Expect RADAR vectors to final approach course.

LANDING KOPF: From BHHIA on track 035° to cross CEMDI at 7000, then on heading 081°. Expect RADAR vectors to final approach course.

SE-3, 22 FEB 2024 to 21 MAR 2024

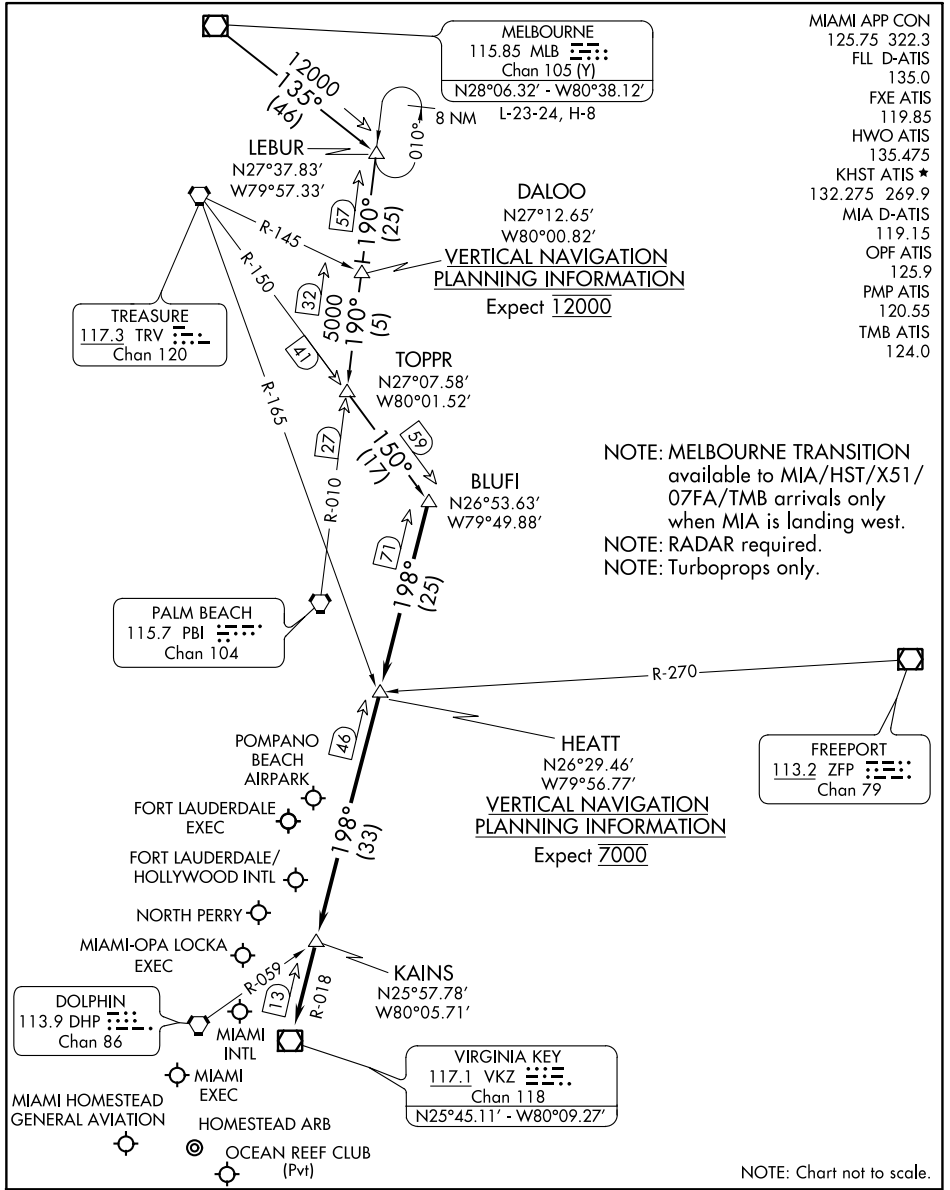
SE-3, 22 FEB 2024 to 21 MAR 2024

BLUF1 FOUR ARRIVAL

FORT LAUDERDALE, FLORIDA

SE-3, 22 FEB 2024 to 21 MAR 2024

SE-3, 22 FEB 2024 to 21 MAR 2024



MELBOURNE TRANSITION (MLB.BLUF14): From over MLB VOR/DME on MLB R-135 to LEBUR INT/MLB 46 DME, then on PBI R-010 to TOPPR INT/PBI 30 DME, then on TRV R-150 to BLUFI INT. Thence . . .
 . . . from over BLUFI INT/VKZ 71 DME on VKZ R-018 to HEATT INT/VKZ 46 DME, then on VKZ R-018 to KAINS INT, then on VKZ R-018 to VKZ VOR/DME. Expect RADAR vectors to final approach course after KAINS INT.

BLUF1 FOUR ARRIVAL

FORT LAUDERDALE, FLORIDA

DEKAL EIGHT ARRIVAL
 (DEKAL.DEKAL8) 03NOV22

(DEKAL.DEKAL8) 22307
 DEKAL EIGHT ARRIVAL

AL-744 (FAA)

FORT LAUDERDALE, FLORIDA

MIAMI APP CON
 119.45 290.325
 FLL D-ATIS
 135.0
 FXE ATIS
 119.85
 HWO ATIS
 135.475
 OPF ATIS
 125.9
 PMP ATIS
 120.55

FORT LAUDERDALE
 114.4 FLL
 Chan 91
 N26°04.44'-W80°09.99'

POMPANO BEACH AIRPARK
 FORT LAUDERDALE EXEC

Ldg KFXE, KFL, KOPF, KHWO, KPMP

FORT LAUDERDALE/HOLLYWOOD INTL

MIAMI-OPA LOCKA EXEC

NORTH PERRY

NOTE: RADAR required.
 NOTE: DME required.

BIMINI
 116.7 ZBV
 Chan 114
 N25°42.25'-W79°17.67'

FREEPORT
 113.2 ZFP
 Chan 79
 N26°33.32'-W78°41.87'
 L-23, H-8

NASSAU
 112.7 ZQA
 Chan 74
 N25°01.53'-W77°26.79'
 L-23, H-8

BORDO
 N24°00.00'
 W78°27.53'
 H-8



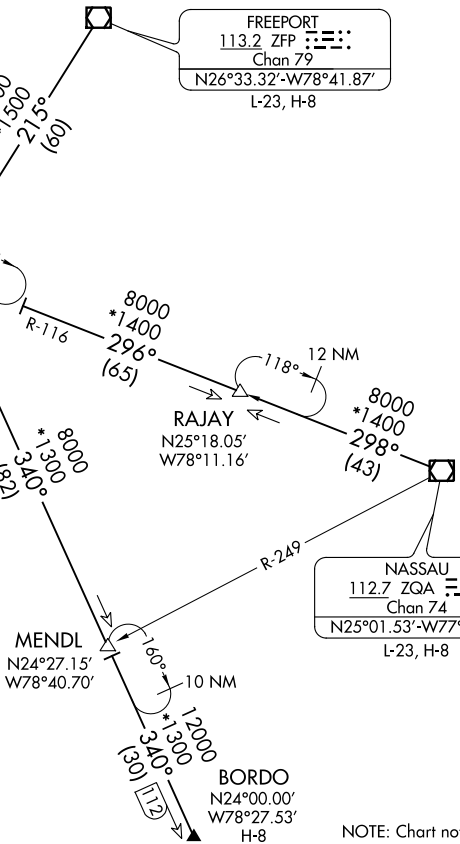
ARRIVAL ROUTE DESCRIPTION

BORDO TRANSITION (BORDO.DEKAL8): From over BORDO on ZBV R-160 to ZBV VORTAC, then on ZBV R-300 to DEKAL. Thence. . . .

FREEPORT TRANSITION (ZFP.DEKAL8): From over ZFP VOR/DME on ZFP R-215 and ZBV R-036 to ZBV VORTAC, then on ZBV R-300 to DEKAL. Thence. . . .

NASSAU TRANSITION (ZQA.DEKAL8): From over ZQA VOR/DME on ZQA R-298 to RAJAY, then on ZBV R-116 to ZBV VORTAC, then on ZBV R-300 to DEKAL. Thence. . . .

LANDING ALL AIRPORTS: From DEKAL on FORT LAUDERDALE VOR/DME (FLL) R-121 to FLL VOR/DME. Expect RADAR vectors to final approach course.

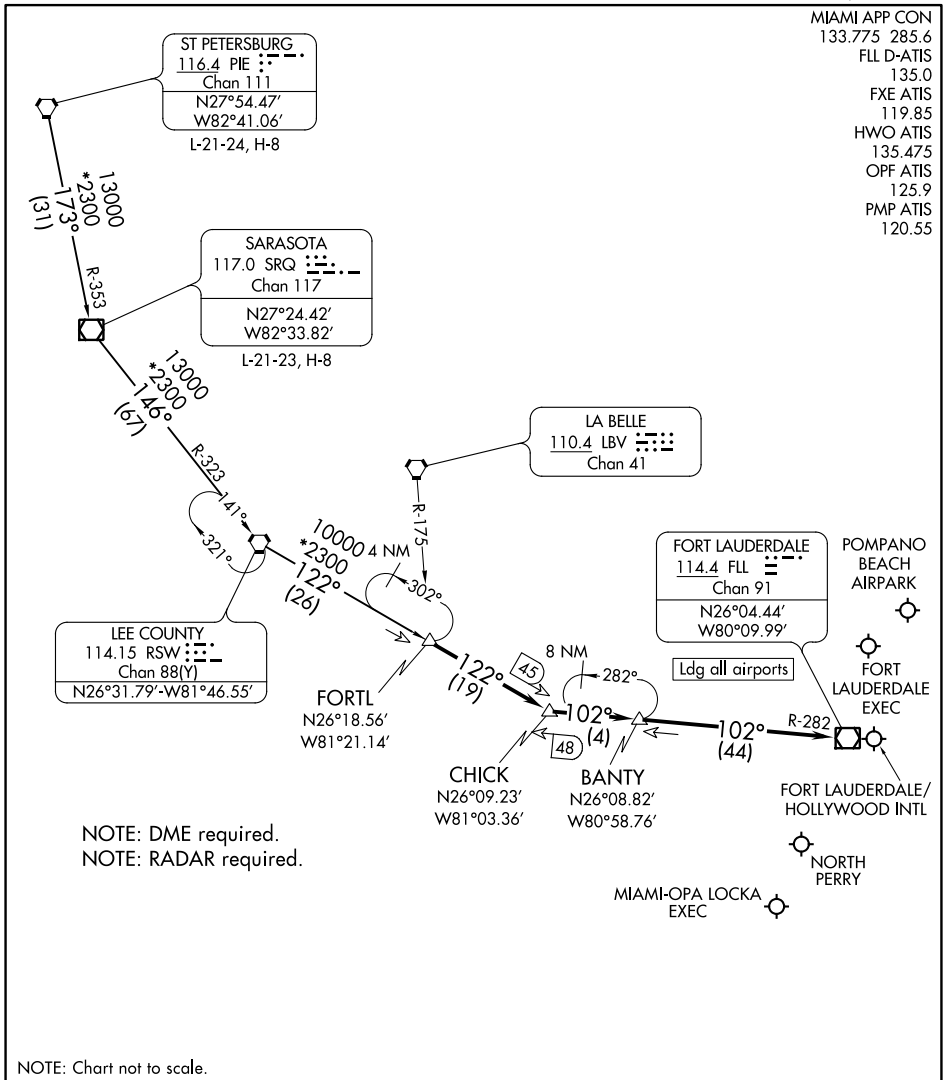


NOTE: Chart not to scale.

FORT LAUDERDALE, FLORIDA

FORTL NINE ARRIVAL

FORT LAUDERDALE, FLORIDA



SE-3, 22 FEB 2024 to 21 MAR 2024

SE-3, 22 FEB 2024 to 21 MAR 2024

ARRIVAL ROUTE DESCRIPTION

ST PETERSBURG TRANSITION (PIE.FORTL9): From over PIE VORTAC on PIE R-173 and SRQ R-353 to SRQ VOR/DME, then on SRQ R-146 and RSW R-323 to RSW VORTAC, then on RSW R-122 to FORTL. Thence. . .

SARASOTA TRANSITION (SRQ.FORTL9): From over SRQ VOR/DME on SRQ R-146 and RSW R-323 to RSW VORTAC, then on RSW R-122 to FORTL. Thence. . .

LANDING ALL AIRPORTS: From FORTL on RSW R-122 to CHICK, then on FORT LAUDERDALE VOR/DME (FLL) R-282 to FLL VOR/DME. Expect RADAR vectors to final approach course.

FORTL NINE ARRIVAL

FORT LAUDERDALE, FLORIDA

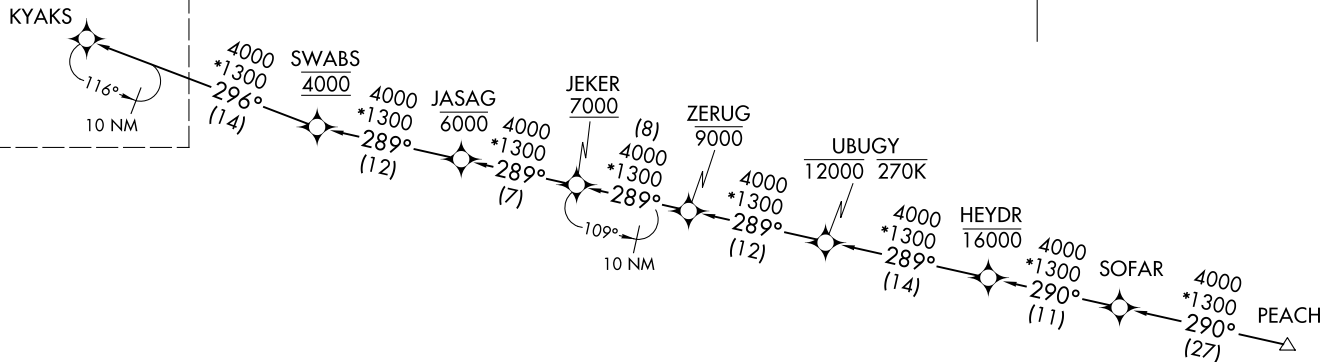
MIAMI APP CON
128.6 306.975
FLL D-ATIS
135.0
FXE ATIS
119.85
HWO ATIS
135.475
OPF ATIS
125.9
PMP ATIS
120.55

(KYAKS.KYAKS3) 22307
AL-744 (FAA)
KYAKS THREE ARRIVAL (RNAV) Transition Routes
FORT LAUDERDALE, FLORIDA

NOTE: Turboprop and prop aircraft only.
NOTE: Do not file JEKER Transition - to be assigned by ATC.



See following page
for arrival routes.



RNAV 1-GPS.
RADAR required.

JEKER TRANSITION (JEKER.KYAKS3)
PEACH TRANSITION (PEACH.KYAKS3)
SOFAR TRANSITION (SOFAR.KYAKS3)

(NARRATIVE ON FOLLOWING PAGE)
(CONTINUED ON FOLLOWING PAGE)

NOTE: Chart not to scale.

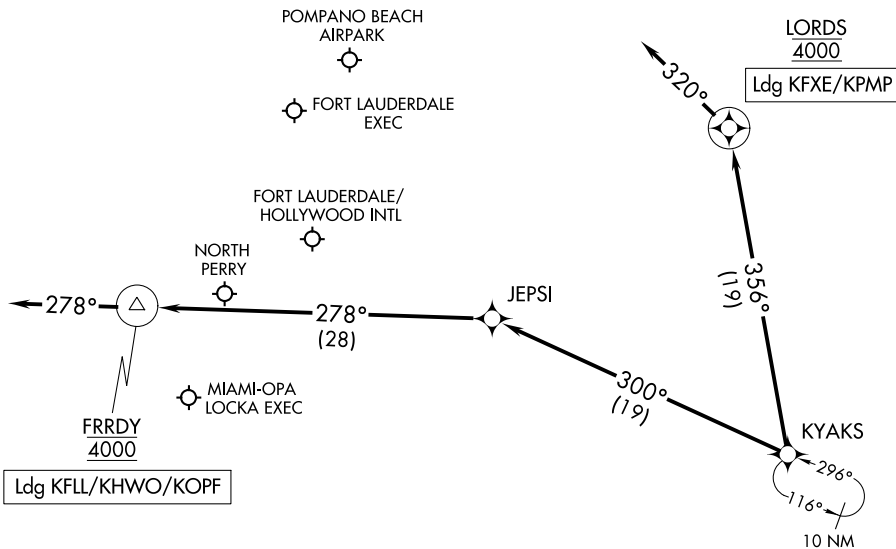
KYAKS THREE ARRIVAL (RNAV) Transition Routes
(KYAKS.KYAKS3) 03NOV22
FORT LAUDERDALE, FLORIDA

KYAKS THREE ARRIVAL (RNAV) Arrival Routes

FORT LAUDERDALE, FLORIDA

RNAV 1-GPS.
RADAR required.

MIAMI APP CON
128.6 306.975
FLL D-ATIS
135.0
FXE ATIS
119.85
HWO ATIS
135.475
OPF ATIS
125.9
PMP ATIS
120.55



NOTE: Turboprop and prop aircraft only.

NOTE: Chart not to scale.

ARRIVAL ROUTE DESCRIPTION

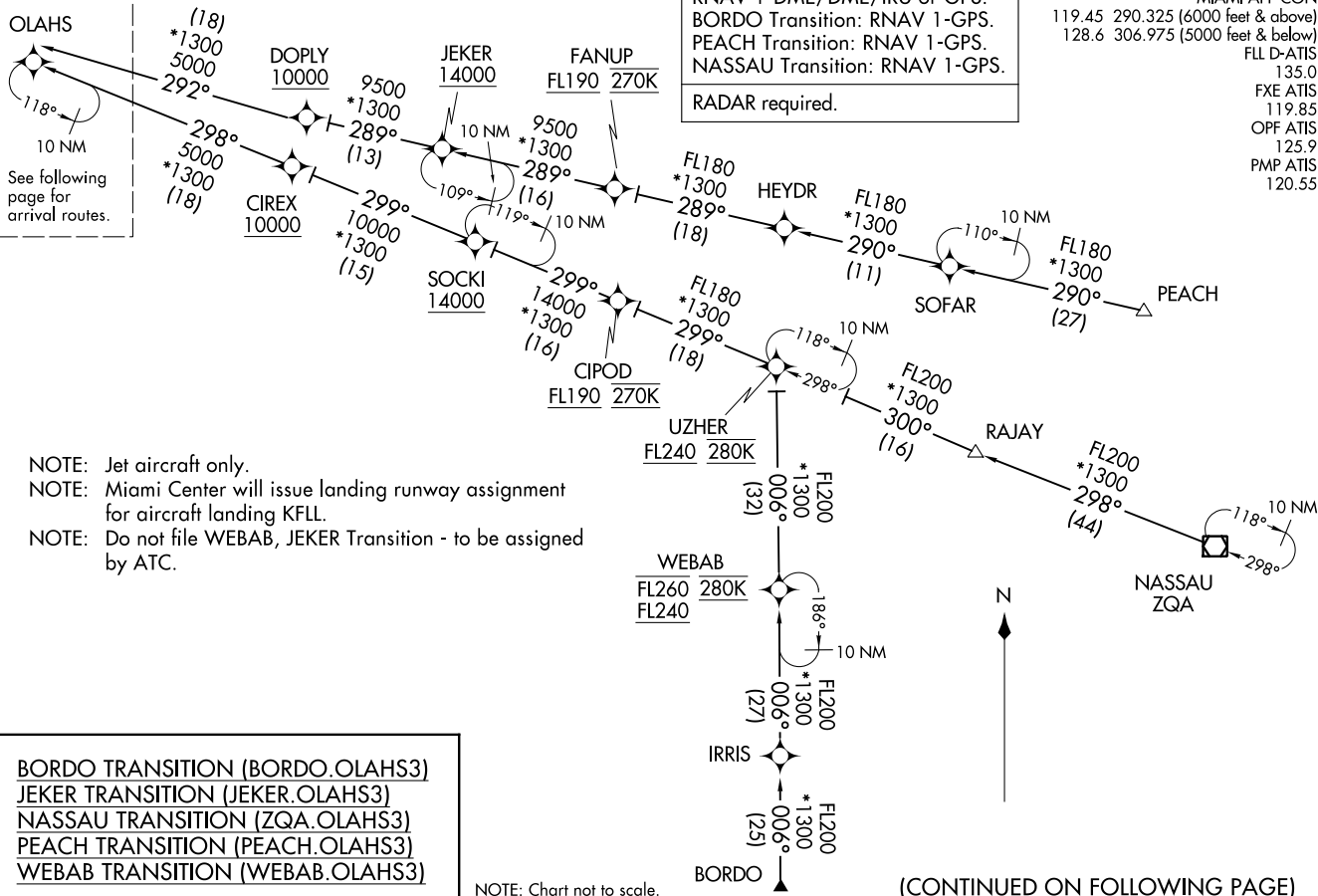
LANDING KFL/KHWO/KOPF: From KYAKS on track 300° to JEPSI, then on track 278° to cross FRRDY at 4000, then on track 278°. Expect RADAR vectors to final approach course.

LANDING KFXE/KPMP: From KYAKS on track 356° to cross LORDS at 4000, then on heading 320°. Expect RADAR vectors to final approach course.

OLAHS THREE ARRIVAL (RNAV) (OLAHS.OLAHS3) 03NOV22

OLAHS THREE ARRIVAL (RNAV) Transition Routes

FORT LAUDERDALE, FLORIDA



(CONTINUED ON FOLLOWING PAGE)

OLAHS THREE ARRIVAL (RNAV) 22207

AL-7/44 (FAA)

FORT LAUDERDALE, FLORIDA

RNAV 1-DME/DME/IRU or GPS.
RADAR required.

(OLAH3.OLAHS3) 03NOV22

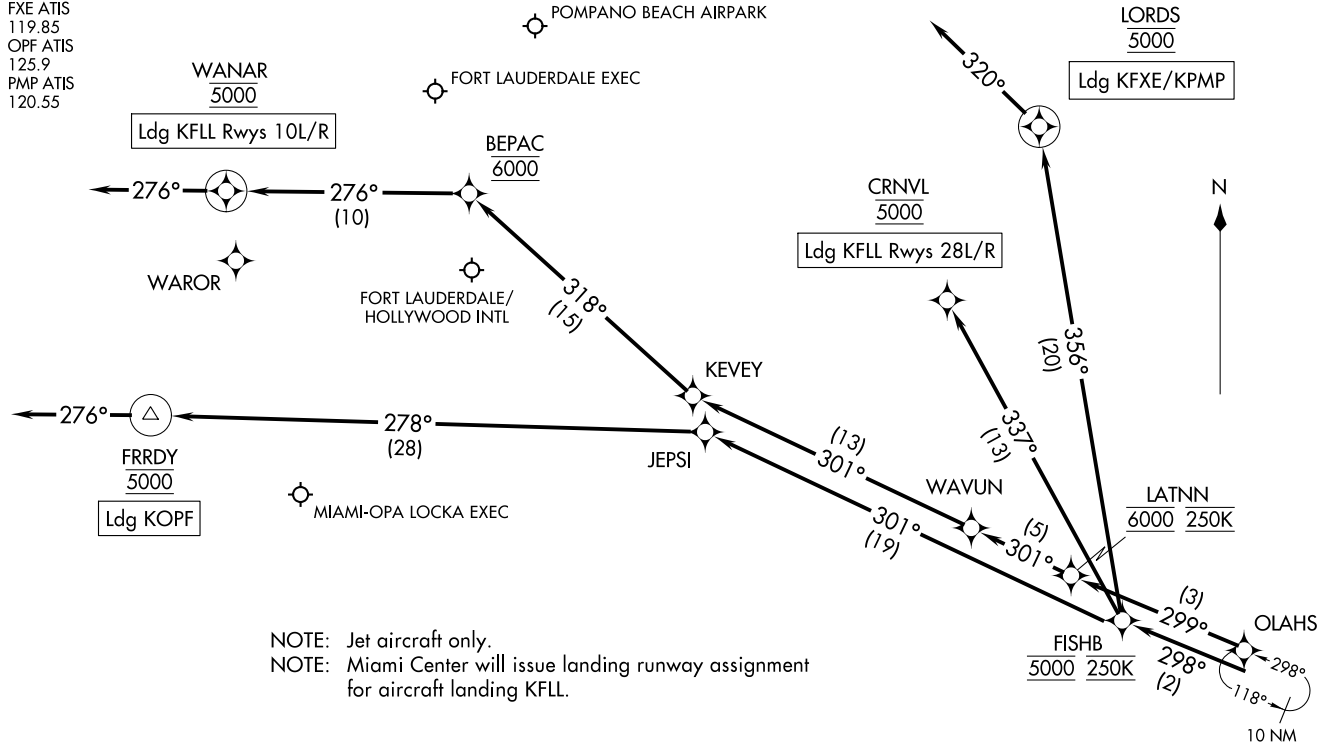
(OLAH3.OLAHS3) 22307

AL-7/44 (FAA)

Arrival Routes

Arrival Routes

MIAMI APP CON
119.45 290.325 (6000 feet & above)
128.6 306.975 (5000 feet & below)
FLL D-ATIS
135.0
FXE ATIS
119.85
OPF ATIS
125.9
PMP ATIS
120.55



NOTE: Jet aircraft only.
NOTE: Miami Center will issue landing runway assignment for aircraft landing KFL.

NOTE: Chart not to scale.

(NARRATIVE ON FOLLOWING PAGE)

FORT LAUDERDALE, FLORIDA

ARRIVAL ROUTE DESCRIPTION

LANDING KFL RUNWAYS 10L/R: From OLAHS on track 299° to cross LATNN at 6000 and at 250K, then on track 301° to WAVUN, then on track 301° to KEVEY, then on track 318° to cross BEPAC at 6000, then on track 276° to cross WANAR at 5000, then on track 276°. Expect RADAR vectors to final approach course.

LANDING KFL RUNWAYS 28L/R: From OLAHS on track 298° to cross FISHB at 5000 and at 250K, then on track 337° to cross CRNVL at 5000.

LANDING KFXE/KPMP: From OLAHS on track 298° to cross FISHB at 5000 and at 250K, then on track 356° to cross LORDS at 5000, then on heading 320°. Expect RADAR vectors to final approach course.

LANDING KOPF: From OLAHS on track 298° to cross FISHB at 5000 and at 250K, then on track 301° to JEPSI, then on track 278° to cross FRRDY at 5000, then on heading 276°. Expect RADAR vectors to final approach course.

SE-3, 22 FEB 2024 to 21 MAR 2024

SE-3, 22 FEB 2024 to 21 MAR 2024

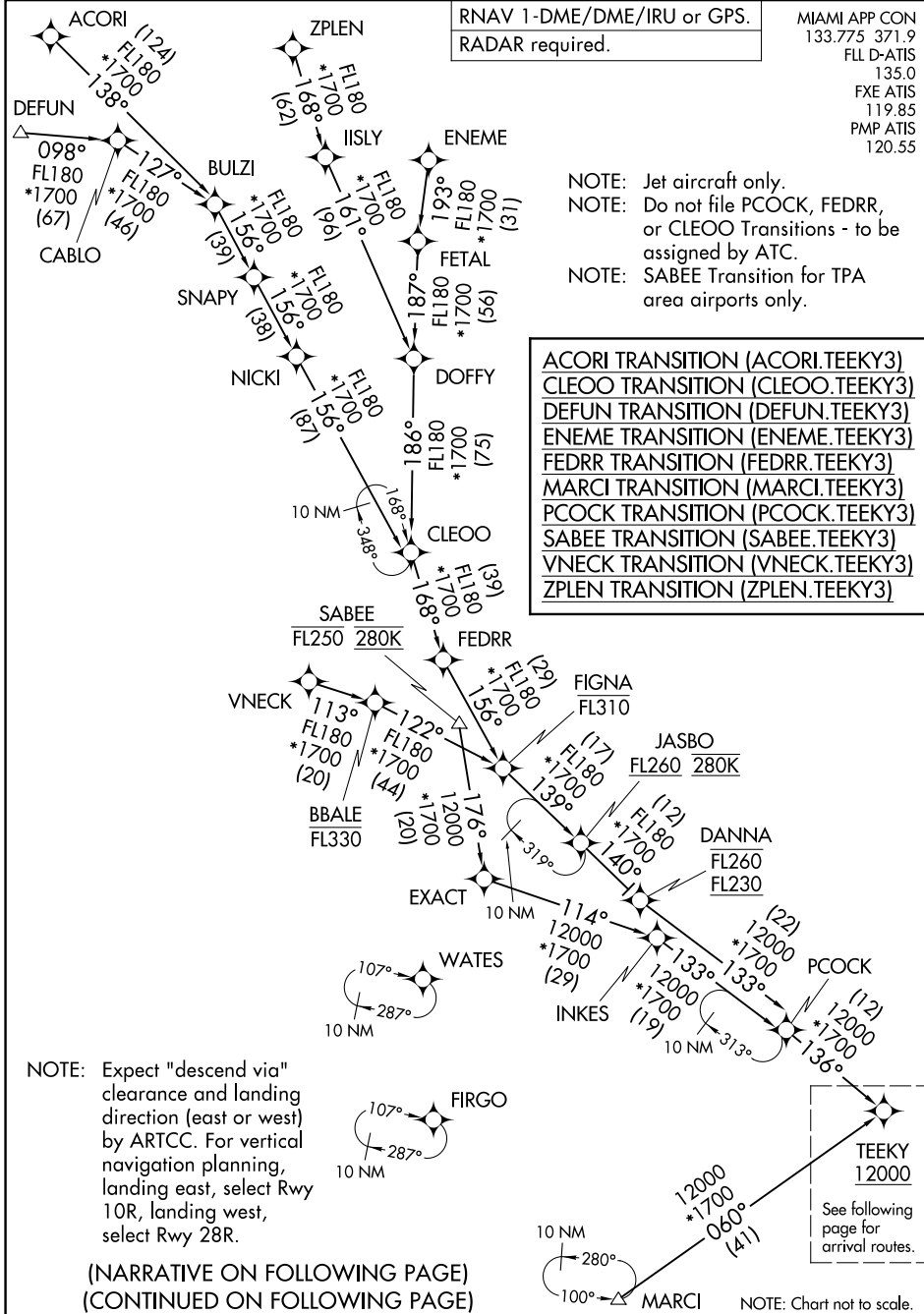
TEEKY THREE ARRIVAL (RNAV) Transition Routes FORT LAUDERDALE, FLORIDA

RNAV 1-DME/DME/IRU or GPS.
RADAR required.

MIAMI APP CON
133.775 371.9
FL D-ATIS
135.0
FXE ATIS
119.85
PMP ATIS
120.55

- NOTE: Jet aircraft only.
- NOTE: Do not file PCOCK, FEDRR, or CLEOO Transitions - to be assigned by ATC.
- NOTE: SABEE Transition for TPA area airports only.

- ACORI TRANSITION (ACORI.TEEKY3)
- CLEOO TRANSITION (CLEOO.TEEKY3)
- DEFUN TRANSITION (DEFUN.TEEKY3)
- ENEME TRANSITION (ENEME.TEEKY3)
- FEDRR TRANSITION (FEDRR.TEEKY3)
- MARCI TRANSITION (MARCI.TEEKY3)
- PCOCK TRANSITION (PCOCK.TEEKY3)
- SABEE TRANSITION (SABEE.TEEKY3)
- VNECK TRANSITION (VNECK.TEEKY3)
- ZPLEN TRANSITION (ZPLEN.TEEKY3)



NOTE: Expect "descend via" clearance and landing direction (east or west) by ARTCC. For vertical navigation planning, landing east, select Rwy 10R, landing west, select Rwy 28R.

(NARRATIVE ON FOLLOWING PAGE)
(CONTINUED ON FOLLOWING PAGE)

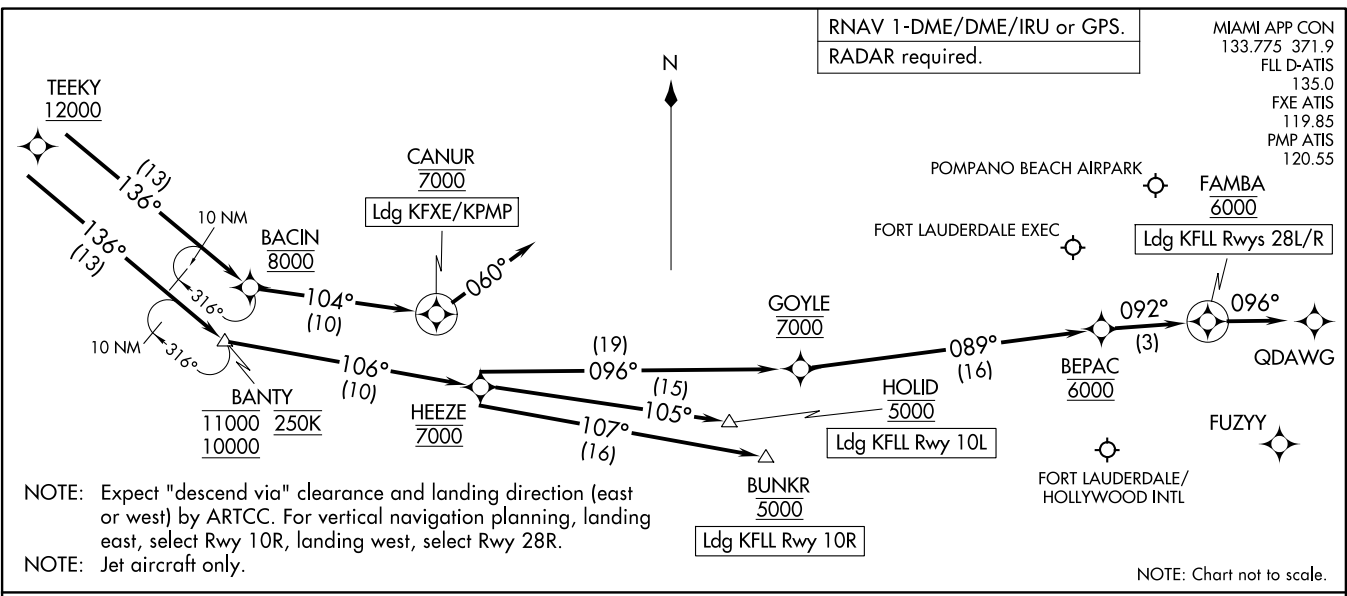
SE-3, 22 FEB 2024 to 21 MAR 2024

SE-3, 22 FEB 2024 to 21 MAR 2024

TEEKY THREE ARRIVAL (RNAV)
(TEEKY, TEEKY3) 03NOV22

Arrival Routes

FORT LAUDERDALE, FLORIDA



NOTE: Expect "descend via" clearance and landing direction (east or west) by ARTCC. For vertical navigation planning, landing east, select Rwy 10R, landing west, select Rwy 28R.
NOTE: Jet aircraft only.

(TEEKY, TEEKY3) 22307

Arrival Routes

AL-744 (FAA)

FORT LAUDERDALE, FLORIDA

ARRIVAL ROUTE DESCRIPTION

- FLL: From TEEKY on track 136° to cross BANTY between 10000 and 11000 and at 250K, then on track 106° to cross HEEZE at 7000.
- LANDING KFL RUNWAY 10L: From HEEZE on track 105° to cross HOLID at 5000. Expect ILS or LOC Rwy 10L approach.
- LANDING KFL RUNWAY 10R: From HEEZE on track 107° to cross BUNKR at 5000. Expect ILS or LOC Rwy 10R approach.
- LANDING KFL RUNWAYS 28L/R: From HEEZE on track 096° to cross GOYLE at 7000, then on track 089° to cross BEPAC at 6000, then on track 092° to cross FAMB at 6000, then on track 096°.
- LANDING KFXE/KPMP: From TEEKY on track 136° to cross BACIN at 8000, then on track 104° to cross CANUR at 7000, then on heading 060°. Expect RADAR vectors to final approach course.