

APP CRS	Rwy Idg	<b>4004</b>
<b>110°</b>	TDZE	<b>382</b>
	Apt Elev	<b>393</b>

# GPS RWY 11

ROHNERVILLE (FOT)

**NA** When local altimeter setting not received, use Arcata altimeter setting. Circling NA for Cat D north of Rwy 11-29.

MISSED APPROACH: Climbing right turn to 3000 direct FOT VORTAC and hold.

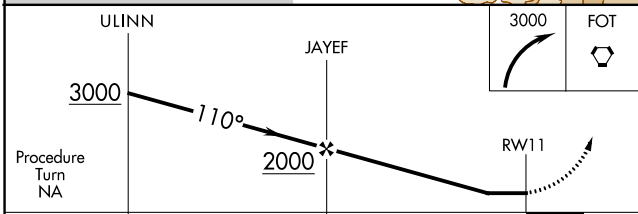
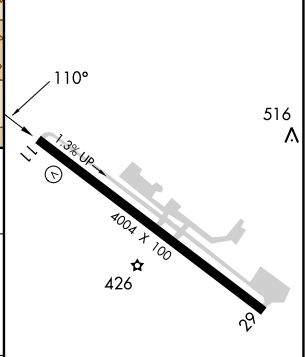
AWOS-3 <b>133.8</b>	SEATTLE CENTER <b>124.85 306.3</b>	CTAF <b>122.9</b>
------------------------	---------------------------------------	----------------------



SW-2, 22 FEB 2024 to 21 MAR 2024

SW-2, 22 FEB 2024 to 21 MAR 2024

ELEV 393	TDZE 382
----------	----------



	5 NM		5.1 NM	
CATEGORY	A	B	C	D
S-11	1140-1 758 (800-1)	1160-1¼ 778 (800-1¼)	1200-2½ 818 (900-2½)	1560-3 1178 (1200-3)
CIRCLING	1140-1 747 (800-1)	1360-1½ 967 (1000-1½)	1720-3 1327 (1400-3)	1780-3 1387 (1400-3)

REIL Rwy 11 and 29  
MIRL Rwy 11-29

APP CRS	Rwy Idg	<b>4004</b>
<b>276°</b>	TDZE	<b>392</b>
	Apt Elev	<b>393</b>

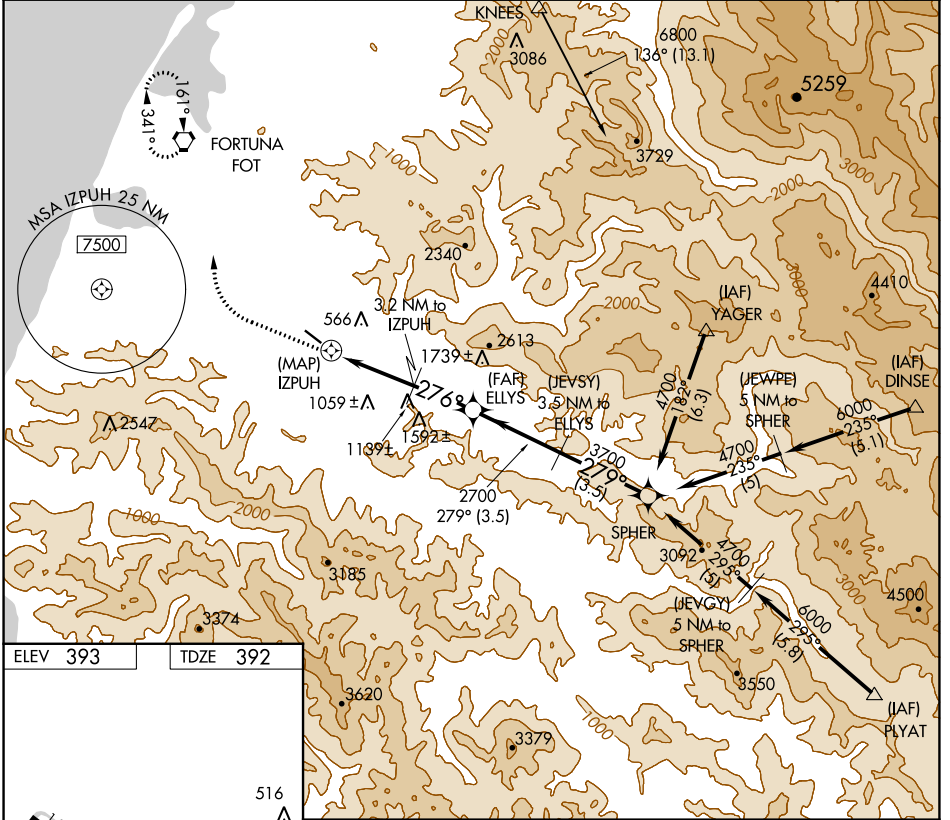
# GPS RWY 29

ROHNERVILLE (FOT)

**NA** When local altimeter setting not received, use Arcata altimeter setting. Circling NA for Cat D north of Rwy 11-29.

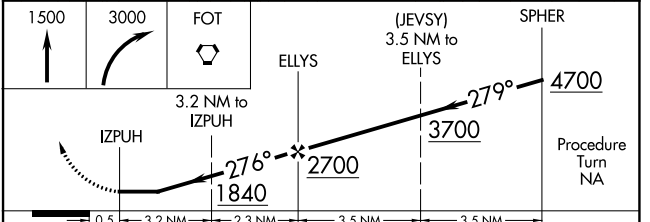
**MISSED APPROACH:** Climb to 1500 then climbing right turn to 3000 direct FOT VORTAC and hold.

AWOS-3 <b>133.8</b>	SEATTLE CENTER <b>124.85 306.3</b>	CTAF <b>122.9</b>
------------------------	---------------------------------------	----------------------



ELEV 393	TDZE 392
----------	----------

REIL Rws 11 and 29 **1**  
MIRL Rwy 11-29 **1**



CATEGORY	A	B	C	D
S-29	1160-1 768 (800-1)	1160-1¼ 768 (800-1¼)	1160-2¼ 768 (800-2¼)	1160-2½ 768 (800-2½)
CIRCLING	1160-1 767 (800-1)	1360-1½ 967 (1000-1½)	1720-3 1327 (1400-3)	1780-3 1387 (1400-3)

SW-2, 22 FEB 2024 to 21 MAR 2024

SW-2, 22 FEB 2024 to 21 MAR 2024