

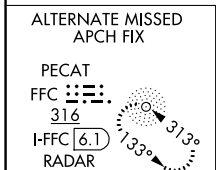
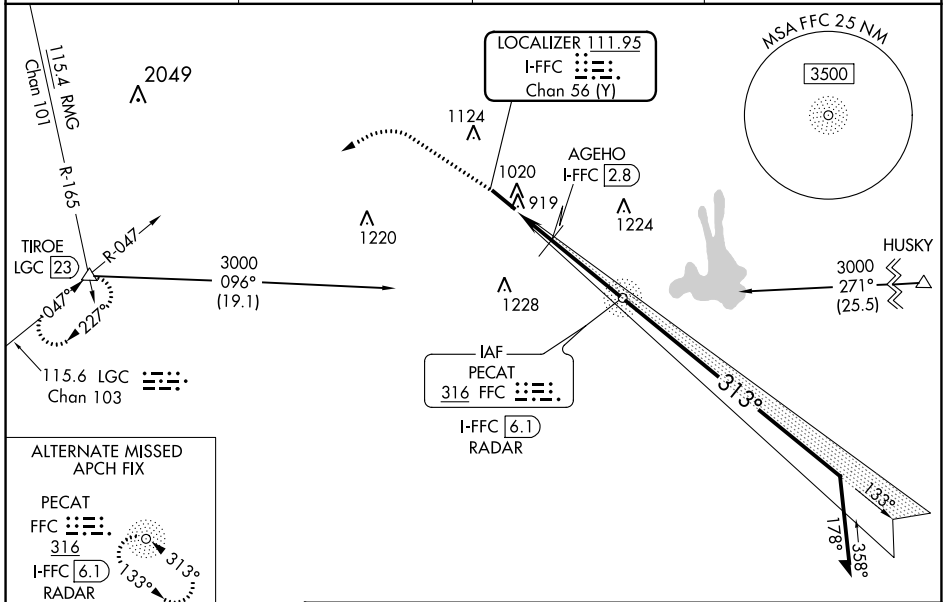
LOC/DME I-FFC 111.95 Chan 56 (Y)	APP CRS 313°	Rwy Idg TDZE Apt Elev	5118 807 808
---	------------------------	-----------------------------	---

ILS or LOC RWY 31

ATLANTA RGNL FALCON FLD (F'F'C)

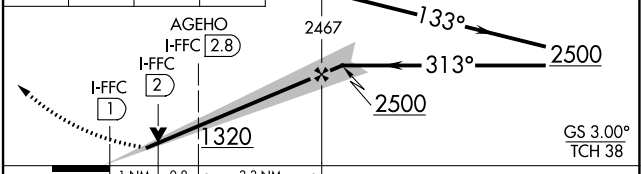
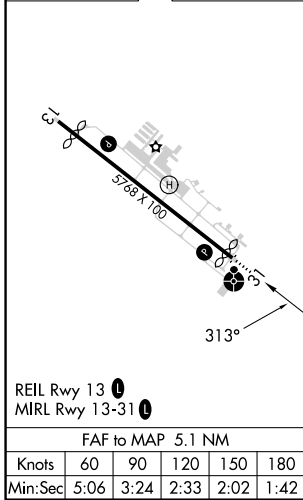
DME or ADF or RADAR required.		ODALS 	MISSED APPROACH: Climb to 1700 then climbing left turn to 4000 on heading 275° and LGC VORTAC R-047 to TIROE INT/LGC 23 DME and hold.
	Circling Rwy 13 NA at night. Rwy 31 helicopter visibility reduction below 3/4 SM NA. Inop table does not apply to S-ILS 31 and to S-LOC 31 Cats C/D.		

ASOS 118.525	ATLANTA APP CON 119.8 354.125	CLNC DEL 119.8	UNICOM 123.05 (CTAF)
------------------------	---	--------------------------	--------------------------------



ELEV 808	D	TDZE 807
----------	----------	----------

1700	4000	LGC R-047	TIROE	FFC NDB PECAT I-FFC 6.1 RADAR	VGSI and ILS glidepath not coincident (VGSI Angle 3.00/TCH 45). Remain within 10 NM
	hdg 275°				



CATEGORY	A	B	C	D
S-ILS 31	1059-3/4		252 (300-3/4)	
S-LOC 31	1320-3/4	513 (600-3/4)	1320-1 3/8	513 (600-1 3/8)
C CIRCLING	1320-1	512 (600-1)	1440-1 3/4 632 (700-1 3/4)	1540-2 1/4 732 (800-2 1/4)
AGEHO FIX MINIMUMS (DME REQUIRED)				
S-LOC 31	1180-3/4	373 (400-3/4)	1180-1	373 (400-1)
C CIRCLING	1320-1	512 (600-1)	1440-1 3/4 632 (700-1 3/4)	1540-2 1/4 732 (800-2 1/4)

SE-4, 22 FEB 2024 to 21 MAR 2024

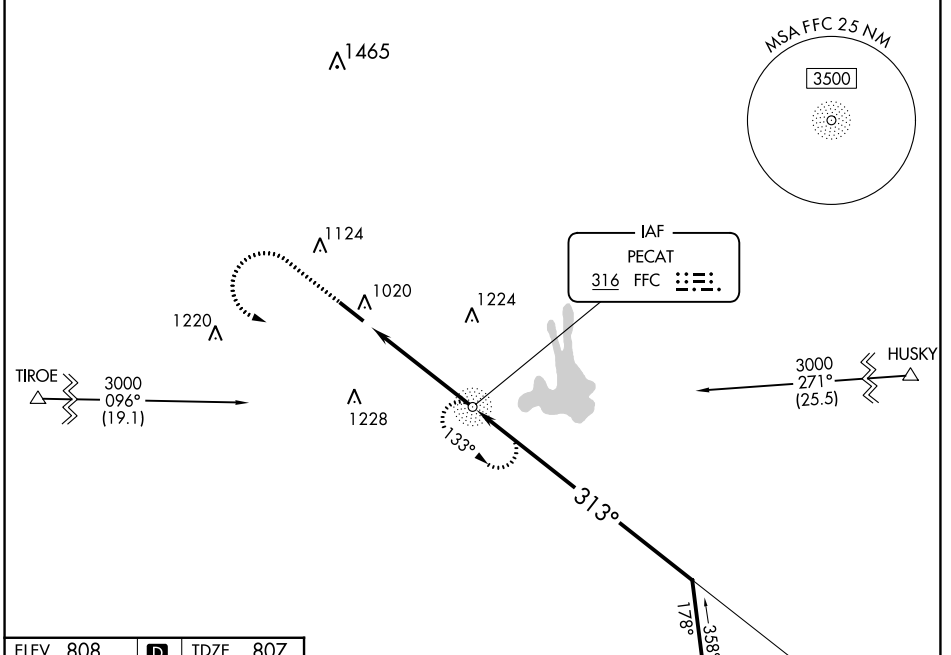
SE-4, 22 FEB 2024 to 21 MAR 2024

NDB FFC 316	APP CRS 313°	Rwy Idg TDZE Apt Elev	5118 807 808
-----------------------	------------------------	-----------------------------	---

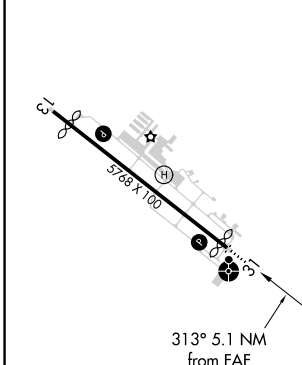
NDB RWY 31

ATLANTA RGNL FALCON FLD (F'F'C)

	Circling Rwy 13 NA at night. Rwy 31 helicopter visibility reduction below 3/4 SM NA. For Inop ALS, increase Cat C/D visibility to 1 1/2 SM.	ODALS 	MISSED APPROACH: Climb to 1700 then climbing left turn to 2500 direct FFC NDB and hold.
		ASOS 118.525	ATLANTA APP CON 119.8 354.125



ELEV 808	D	TDZE 807
----------	----------	----------

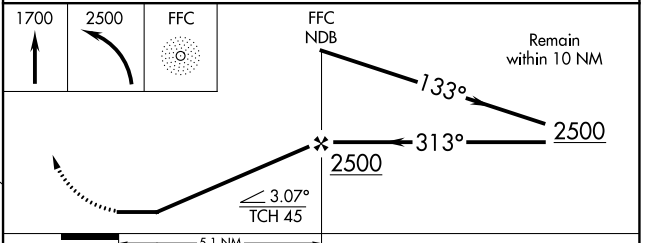


REIL Rwy 13

MIRL Rwy 13-31

FAF to MAP 5.1 NM

Knots	60	90	120	150	180
Min:Sec	5:06	3:24	2:33	2:02	1:42



CATEGORY	A	B	C	D
S-31	1360-3/4 553 (600-3/4)		1360-1 3/8 553 (600-1 3/8)	
CIRCLING	1360-1 552 (600-1)		1440-1 3/4 632 (700-1 3/4)	1540-2 1/4 732 (800-2 1/4)

SE-4, 22 FEB 2024 to 21 MAR 2024

SE-4, 22 FEB 2024 to 21 MAR 2024

WAAS CH 61006 W13A	APP CRS 133°	Rwy Idg TDZE Apt Elev	4625 797 808
--	------------------------	-----------------------------	---

RNAV (GPS) RWY 13

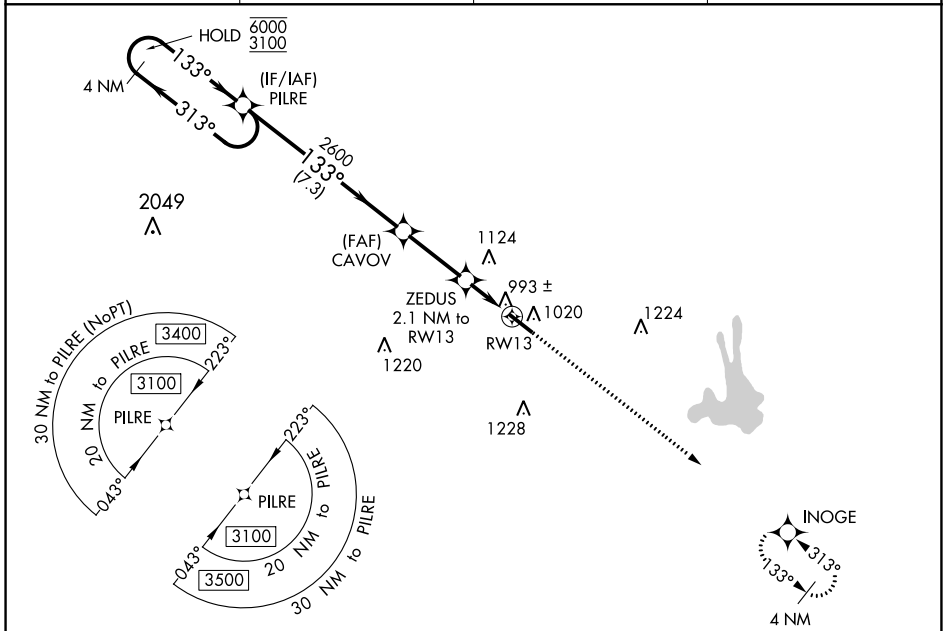
ATLANTA RGNL FALCON FLD (F'FC)

RNP APCH-GPS.

▼ Helicopter visibility reduction below 3/4 SM NA. For uncompensated Baro-VNAV systems, LNAV/VNAV NA below -6°C or above 54°C.

MISSED APPROACH: Climb to 3000 direct INOGE and hold.

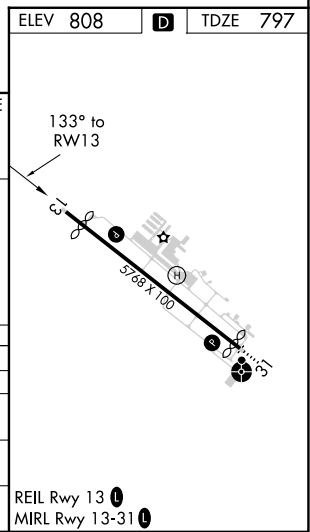
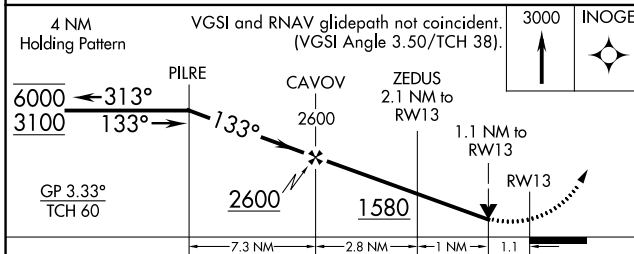
ASOS 118.525	ATLANTA APP CON 119.8 354.125	CINC DEL 119.8	UNICOM 123.05 (CTAF) 0
------------------------	---	--------------------------	----------------------------------



SE-4, 22 FEB 2024 to 21 MAR 2024

SE-4, 22 FEB 2024 to 21 MAR 2024

ELEV 808	D	TDZE 797
----------	----------	----------



CATEGORY	A	B	C	D
LPV DA		1184-1 1/8	387 (400-1 1/8)	
LNAV/VNAV DA		1230-1 1/4	433 (500-1 1/4)	
LNAV MDA	1260-1	463 (500-1)	1260-1 3/8	463 (500-1 3/8)
C CIRCLING	1320-1	512 (600-1)	1440-1 3/4	1540-2 1/4

REIL Rwy 13 **0**
MIRL Rwy 13-31 **0**

WAAS CH 72706 W31A	APP CRS 313°	Rwy Idg 5118
	TDZE 807	
	Apt Elev 808	

RNAV (GPS) RWY 31

ATLANTA RGNL FALCON FLD (F'F'C)

RNP APCH.

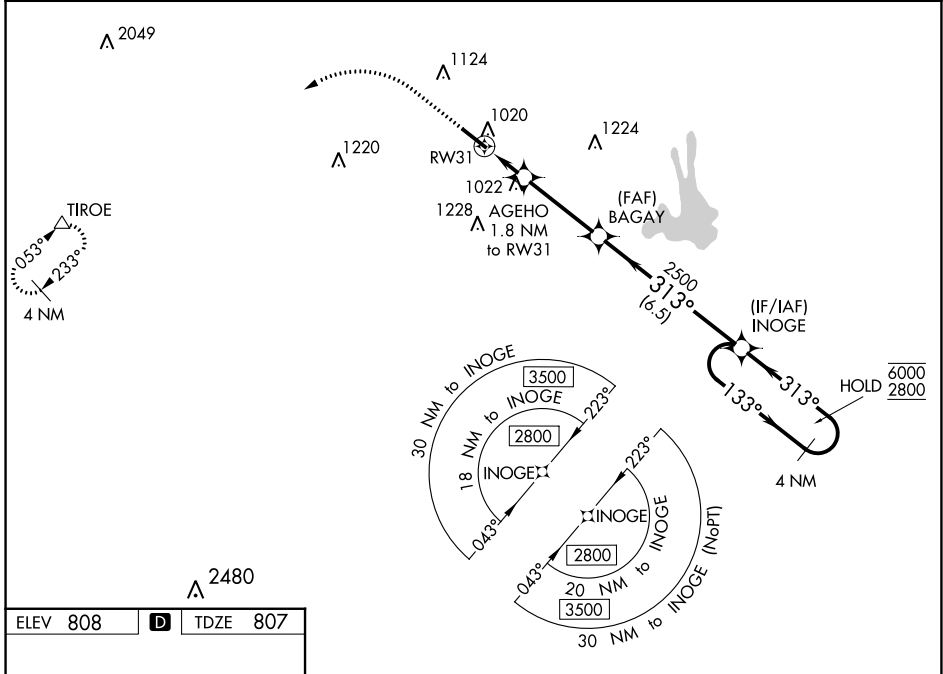
⚠ Circling Rwy 13 NA at night. Rwy 31 helicopter visibility reduction below ¼ SM NA. Inop table does not apply to LPV. For inop ALS, increase LNAV/VNAV Cat A/B visibility to 1½ SM. For uncompensated Baro-VNAV systems, LNAV/VNAV NA below -7°C or above 54°C.

ODALS

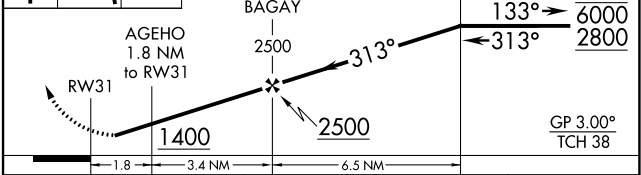
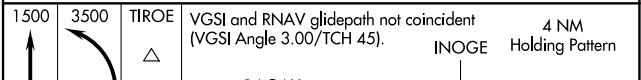
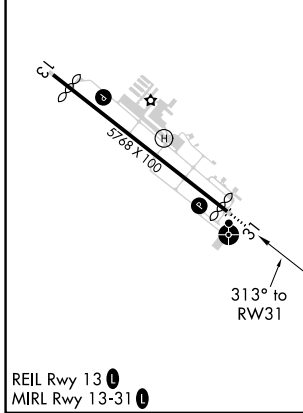


MISSED APPROACH: Climb to 1500 then climbing left turn to 3500 direct TIR0E and hold.

ASOS 118.525	ATLANTA APP CON 119.8 354.125	CLNC DEL 119.8	UNICOM 123.05 (CTAF) 0
------------------------	---	--------------------------	----------------------------------



ELEV 808	D	TDZE 807
----------	----------	----------



CATEGORY	A	B	C	D
LPV DA		1059-¾	252 (300-¾)	
LNAV/VNAV DA		1188-1	381 (400-1)	
LNAV MDA	1280-¾	473 (500-¾)	1280-1¼	473 (500-1¼)
C CIRCLING	1320-1	512 (600-1)	1440-1¾ 632 (700-1¾)	1540-2¼ 732 (800-2¼)