

APP CRS	Rwy Idg	3215
021°	TDZE	9
	Apt Elev	11

RNAV (GPS) RWY 2

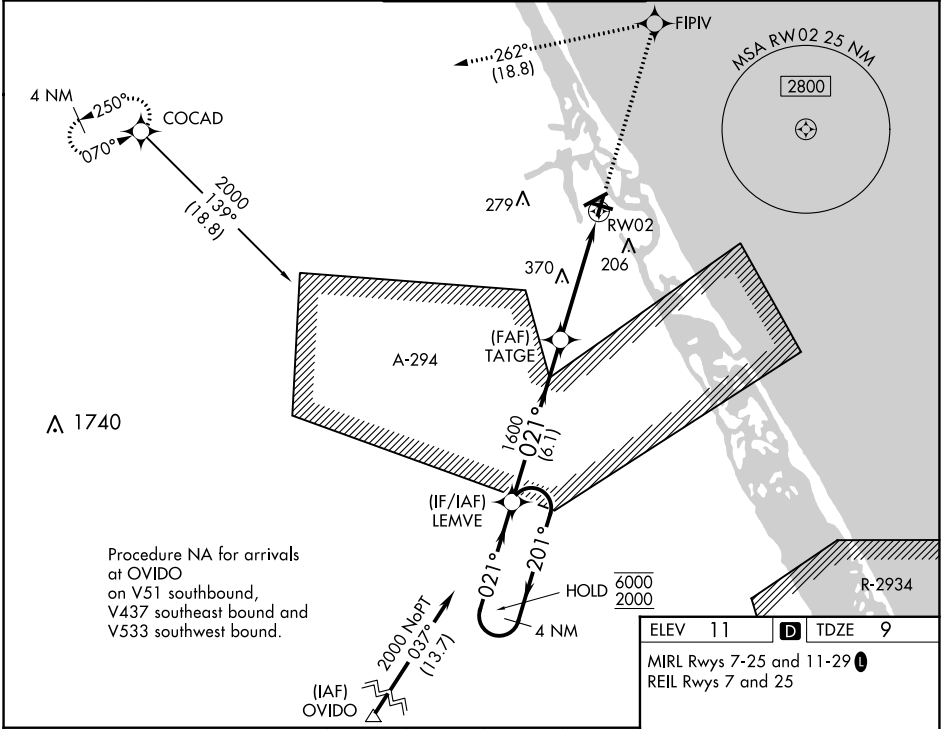
NEW SMYRNA BEACH MUNI (EVB)

RNP APCH-GPS

⚠ Rwy 2 helicopter visibility reduction below 3/4 SM NA. VDP NA when using Daytona Beach altimeter setting. Straight-in Rwy 2 NA at night, Circling Rwy 7, 11, 25 NA at night.
⚠ When local altimeter setting not received, use Daytona Beach altimeter setting and increase all MDA 40 feet.

MISSED APPROACH: Climb to 2000 direct FIPIV and left turn on track 262° to COCAD and hold.

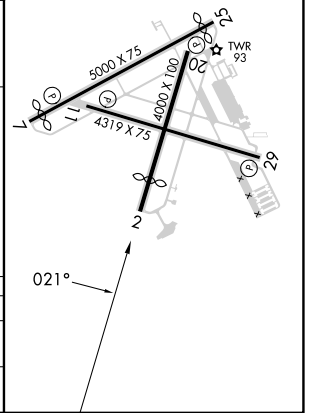
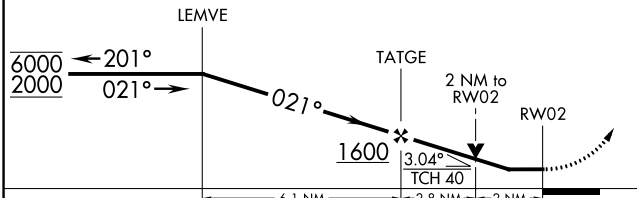
ATIS 124.625	DAYTONA APP CON 125.35 322.3	NEW SMYRNA TOWER BEACH★ 119.675 (CTAF) 0	GND CON 121.325	UNICOM 122.95
------------------------	--	--	---------------------------	-------------------------



SE-3, 22 FEB 2024 to 21 MAR 2024

SE-3, 22 FEB 2024 to 21 MAR 2024

ELEV 11	D TDZE 9
MIRL Rws 7-25 and 11-29 0	
REIL Rws 7 and 25	



CATEGORY	A	B	C	D
LNAV MDA	700-1	691 (700-1)	700-2	691 (700-2)
C CIRCLING	700-1 1/4	689 (700-1 1/4)	700-2 689 (700-2)	700-2 1/4 689 (700-2 1/4)

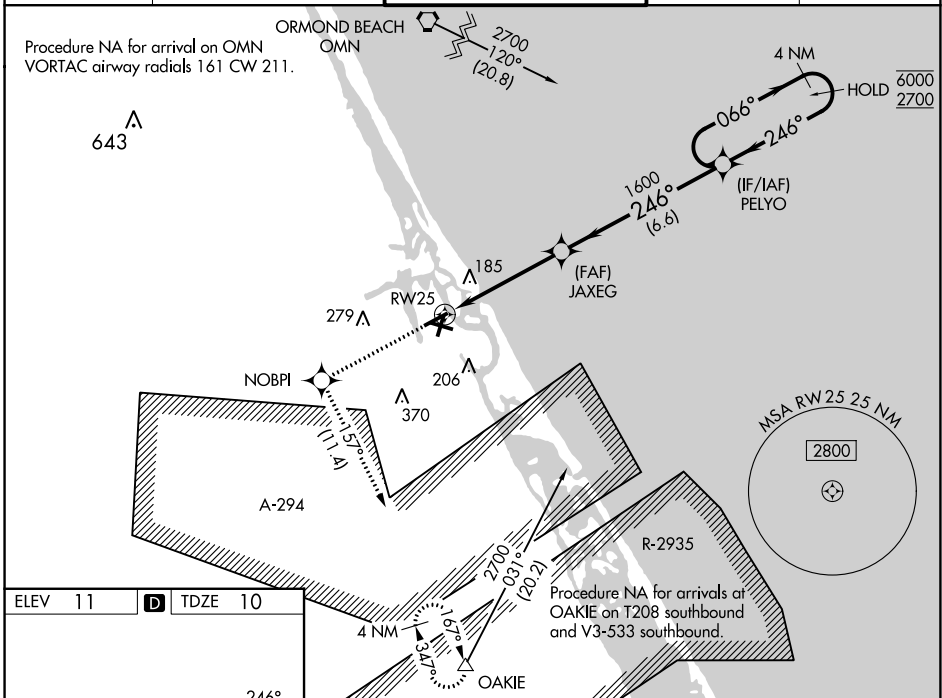
WAAS CH 50500 W25A	APP CRS 246°	Rwy Idg 4463 TDZE 10 Apt Elev 11
--	------------------------	---

RNAV (GPS) RWY 25

NEW SMYRNA BEACH MUNI (EVB)

RNP APCH-GPS.	<p>▼ Rwy 25 helicopter visibility reduction below 1 SM NA. Straight-in Rwy 25 NA at night, Circling Rwy 7, 11, 25 NA at night. When local altimeter setting not received, use Daytona Beach altimeter setting increase LPV DA to 328 feet and all MDA 40 feet. Increase LNAV Cat C visibility ½ SM and Circling Cat C visibility ¼ SM.</p>	MISSED APPROACH: Climb to 4000 direct NOBPI and on track 1.57° to OAKIE and hold, continue climb-in-hold to 4000.
---------------	--	---

ATIS 124.625	DAYTONA APP CON 125.35 322.3	NEW SMYRNA TOWER BEACH* 119.675 (CTAF) 0	GND CON 121.325	UNICOM 122.95
------------------------	--	--	---------------------------	-------------------------



ELEV 11	D	TDZE 10	<p>4000 NOBPI tr 157° OAKIE VGSI and RNAV glidepath not coincident (VGSI Angle 3.00/TCH 46).</p> <p>4 NM Holding Pattern</p> <p>PELYO 066° 6000 2700</p> <p>JAXEG 1600 246° 1600</p> <p>RW25 4.7 NM 6.6 NM</p> <p>GP 3.00° TCH 60</p>																					
REIL Rws 7 and 25 MIRL Rws 7-25 and 11-29 0	<table border="1"> <thead> <tr> <th>CATEGORY</th> <th>A</th> <th>B</th> <th>C</th> <th>D</th> </tr> </thead> <tbody> <tr> <td>LPV DA</td> <td colspan="3">303-1 293 (300-1)</td> <td>NA</td> </tr> <tr> <td>LNAV MDA</td> <td>440-1</td> <td>430 (500-1)</td> <td>440-1¼ 430 (500-1¼)</td> <td>NA</td> </tr> <tr> <td>CIRCLING</td> <td>440-1 429 (500-1)</td> <td>520-1 509 (600-1)</td> <td>680-1¾ 669 (700-1¾)</td> <td>NA</td> </tr> </tbody> </table>				CATEGORY	A	B	C	D	LPV DA	303-1 293 (300-1)			NA	LNAV MDA	440-1	430 (500-1)	440-1¼ 430 (500-1¼)	NA	CIRCLING	440-1 429 (500-1)	520-1 509 (600-1)	680-1¾ 669 (700-1¾)	NA
CATEGORY	A	B	C	D																				
LPV DA	303-1 293 (300-1)			NA																				
LNAV MDA	440-1	430 (500-1)	440-1¼ 430 (500-1¼)	NA																				
CIRCLING	440-1 429 (500-1)	520-1 509 (600-1)	680-1¾ 669 (700-1¾)	NA																				

SE-3, 22 FEB 2024 to 21 MAR 2024

SE-3, 22 FEB 2024 to 21 MAR 2024

WAAS CH 97700 W29A	APP CRS 291°	Rwy Idg TDZE 11 Apt Elev 11	4319
--	------------------------	---	-------------

RNAV (GPS) RWY 29

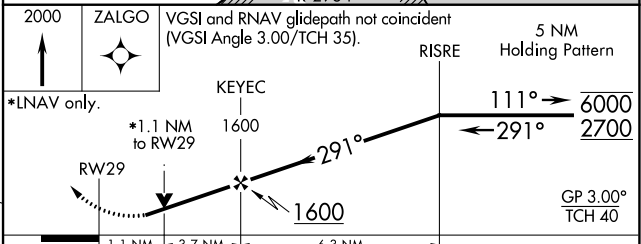
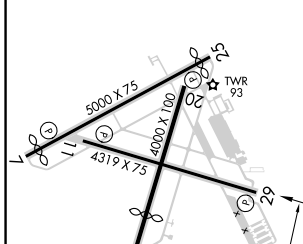
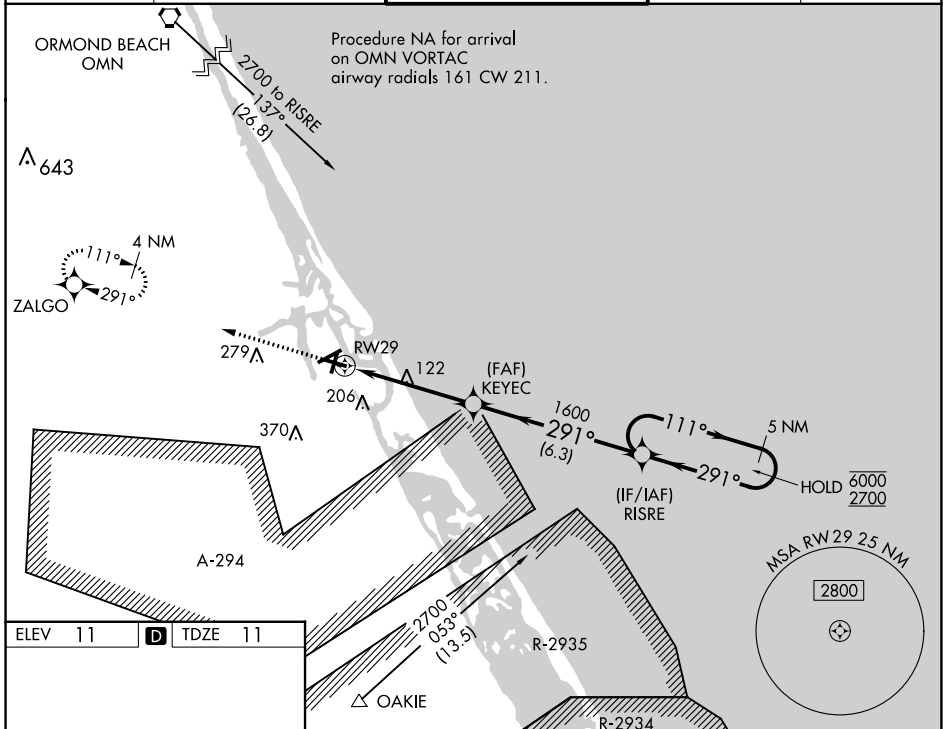
NEW SMYRNA BEACH MUNI (EVB)

RNP APCH-GPS.

▼ Rwy 29 helicopter visibility reduction below 3/4 SM NA. VDP NA when using Daytona Beach altimeter setting. Circling Rwy 7, 11, 25 NA at night. When local altimeter setting not received, use Daytona Beach altimeter setting increase LPV DA to 333 feet and all visibilities 1/8 SM. Increase all MDAs 40 feet, LNAV Cat C/D visibility 1/8 SM, and Circling Cats C/D visibility 1/4 SM.

MISSED APPROACH: Climb to 2000 direct ZALGO and hold.

ATIS 124.625	DAYTONA APP CON 125.35 322.3	NEW SMYRNA TOWER BEACH* 119.675 (CTAF) 0	GND CON 121.325	UNICOM 122.95
------------------------	--	--	---------------------------	-------------------------



REIL Rws 7 and 25 MIRL Rws 7-25 and 11-29 0	ELEV 11	D	TDZE 11	
KEYEC	1600	1.1 NM to RWY 29	6.3 NM	
1.1 NM	3.7 NM	6.3 NM		
CATEGORY	A	B	C	D
LPV DA	308-7/8		297 (300-7/8)	
LNAV MDA	380-1		369 (400-1)	
CIRCLING	440-1 429 (500-1)	520-1 509 (600-1)	680-1 3/4 669 (700-1 3/4)	680-2 669 (700-2)

SE-3, 22 FEB 2024 to 21 MAR 2024

SE-3, 22 FEB 2024 to 21 MAR 2024

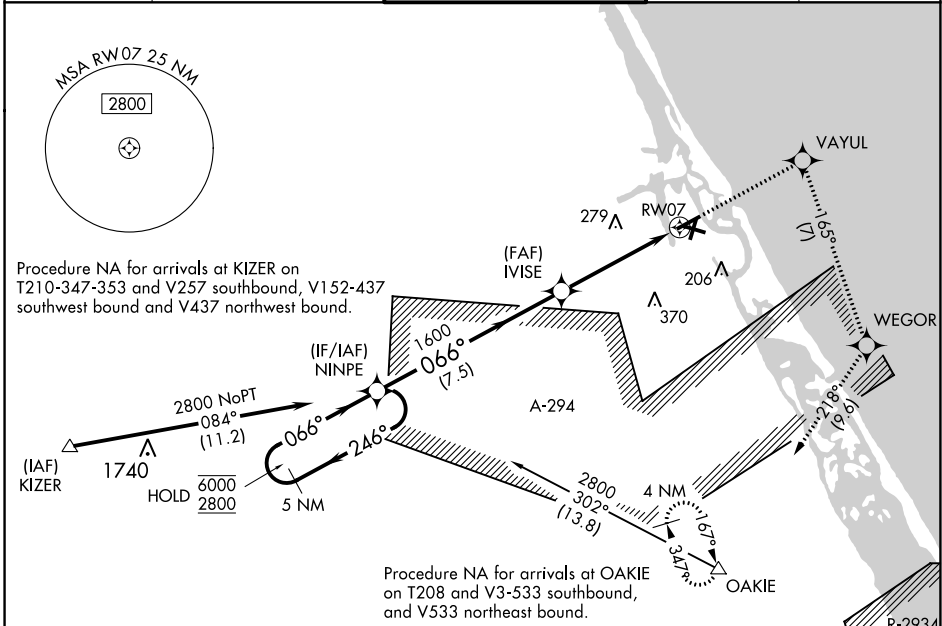
APP CRS	Rwy Idg	4518
066°	TDZE	9
	Apt Elev	11

RNAV (GPS) RWY 7

NEW SMYRNA BEACH MUNI (EVB)

RNP APCH-GPS.		<p>▼ Rwy 7 helicopter visibility reduction below 1 SM NA. Straight-in Rwy 7 NA at night, Circling Rwy 7, 11, 25 NA at night. When local altimeter setting not received, use Daytona Beach altimeter setting and increase all MDAs 40 feet, LNAV visibility Cat C/D ½ SM, and Circling visibility Cat C/D ¼ SM.</p>		
<p>▲ MISSED APPROACH: Climb to 2800 direct VAYUL and right turn on track 165° to WEGOR and on track 218° to OAKIE and hold.</p>				

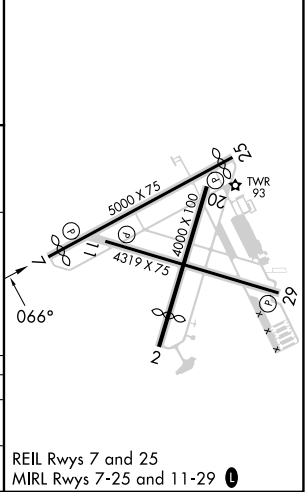
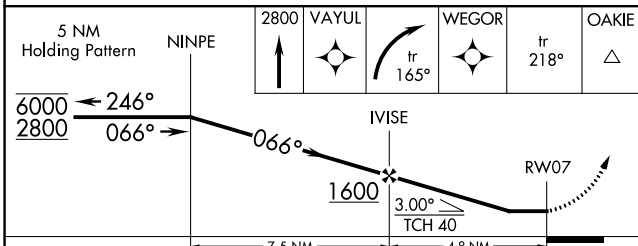
ATIS	DAYTONA APP CON	NEW SMYRNA TOWER BEACH*	GND CON	UNICOM
124.625	125.35 322.3	119.675 (CTAF) 0	121.325	122.95



SE-3, 22 FEB 2024 to 21 MAR 2024

SE-3, 22 FEB 2024 to 21 MAR 2024

ELEV	11	D	TDZE	9
------	-----------	----------	------	----------



CATEGORY	A	B	C	D
LNAV MDA	500-1	491 (500-1)	500-1¾	491 (500-1¾)
C CIRCLING	500-1 489 (500-1)	520-1 509 (600-1)	680-1¾ 669 (700-1¾)	680-2 669 (700-2)

REIL Rws 7 and 25
MIRL Rws 7-25 and 11-29 **0**