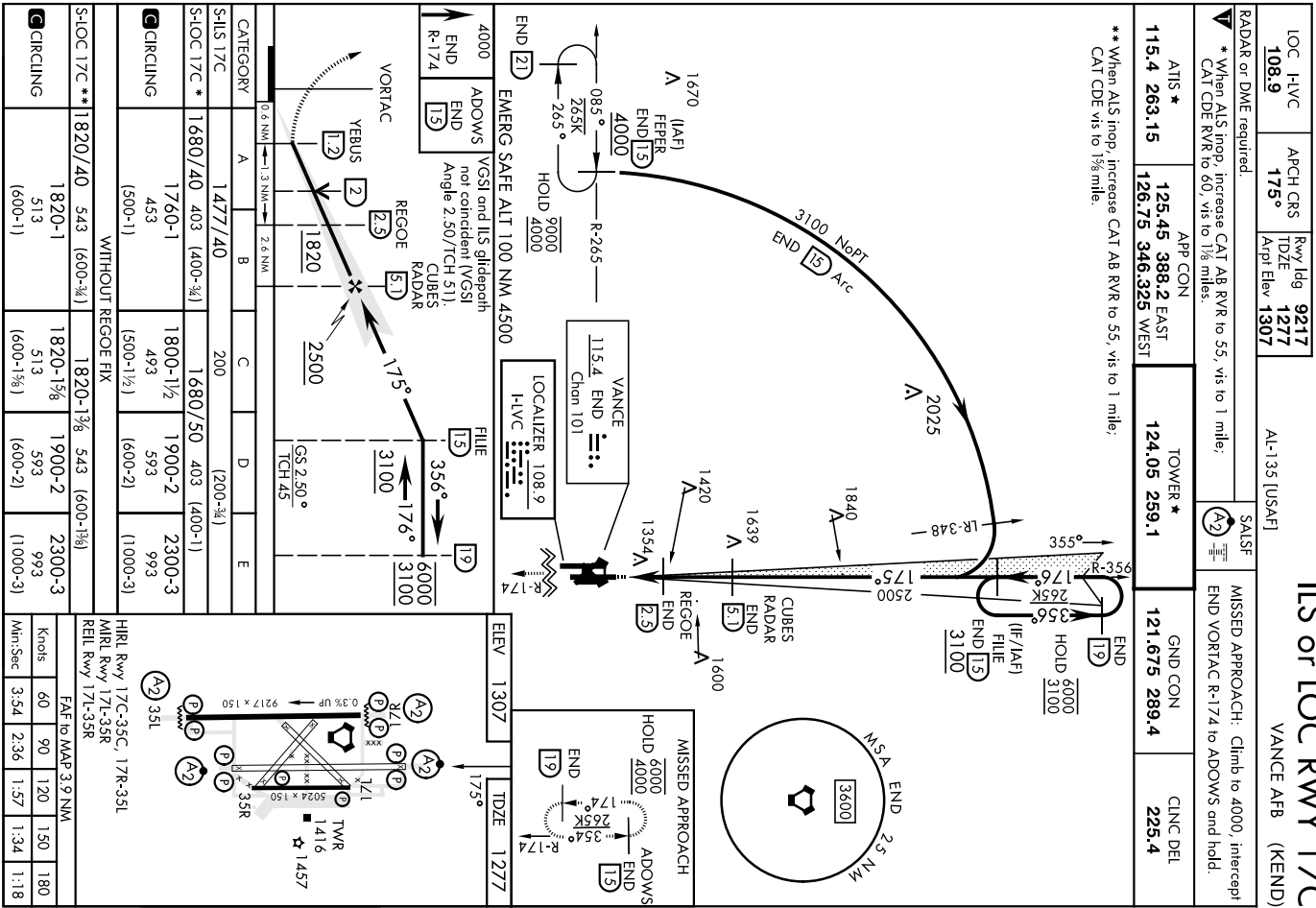


ILS or LOC Rwy 17C

VANCE AFB (KEND)

AL-135 (USAF)



ILS or LOC Rwy 17C

VANCE AFB (KEND)


36°20'N-97°55'W

IIS or LOC Rwy 35C

VANCE AFB (KEND)

LOC I-ENID 110.1	APCH CRS 355°	Fix/Idg TDZE 1293	APR CON TDZE 1293
RADAR or DME required		APrt Elev 1307	

AL-135 [USAF]

SALSF 

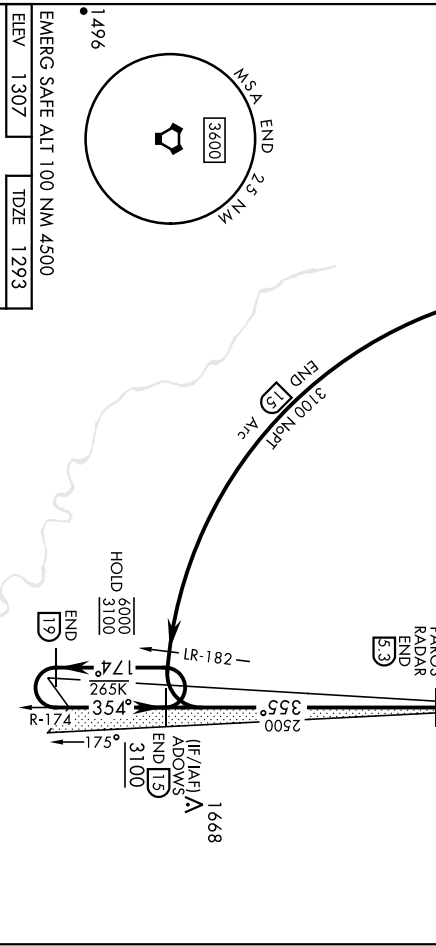
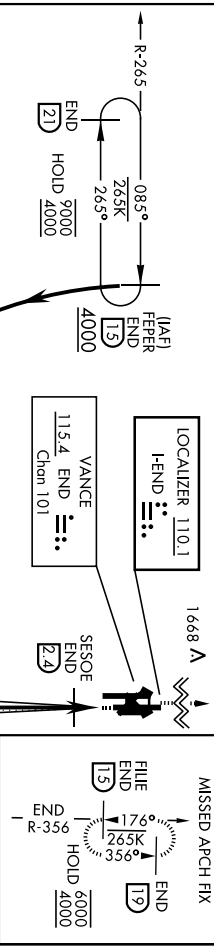
MISSED APPROACH: Climb to 4000, intercept ENID VORTAC R-356 to FILE and hold.

ATIS * 115.4 263.15	APP CON 125.45 388.2 EAST
**When ATIS stop, increase RVR to 55, vis to 1 mile. **When ATIS stop, increase CAT Ab RVR to 55, vis to 1 mile. CAT CDE vis to 1/4 mile.	

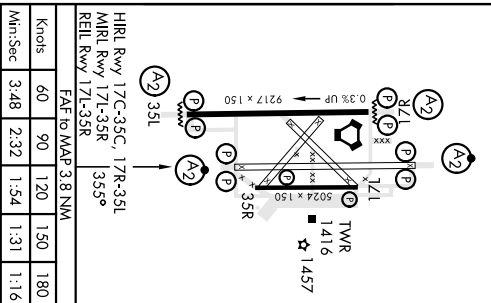
TOWER * 124.05 259.1

GND CON 121.675 289.4

CINC DEL 225.4



EMERG SAFE ALT 100 NM 4500
ELEV 1307 TDZE 1293



END 6000	ADOWS 19	PAROS RADAR END 53	4000 FILE END 13
3100	174	SESOE 24	R-356
354	13	1720	VORTAC
3100	35.4	1720	
2500	35.5		
CAUTION: IIS Rwy 35C Height Group 4 WCH 1.6h.			
GS 2.50° TCH 42			
CATEGORY	A	B	C
S-ILS 35C	1493/40	200	(200-3)
S-LOC 35C*	1640/40	347	(400-3)
CIRCLING	1760-1	1800-1 1/2	1900-2
	433	493	993
	(500-1)	(500-1 1/2)	(600-2)
WITHOUT SESOE FIX MINIMUMS			
S-LOC 35C**	1720/40 427 (500-3/4)	1720/50 427 (500-1)	
CIRCLING	1760-1	1800-1 1/2	1900-2
	453	493	993
	(500-1)	(500-1 1/2)	(600-2)
FAF to MAP 3.8 NM			
Knots	60	90	120
Min:Sec	3:48	2:32	1:54
			1:31
			1:16

ENID, OKLAHOMA
Amdt 2 24MAR22
36°20'N-97°55'W
IIS or LOC Rwy 35C
VANCE AFB (KEND)

ILS or LOC RWY 35L

VANCE AFB (KEND)

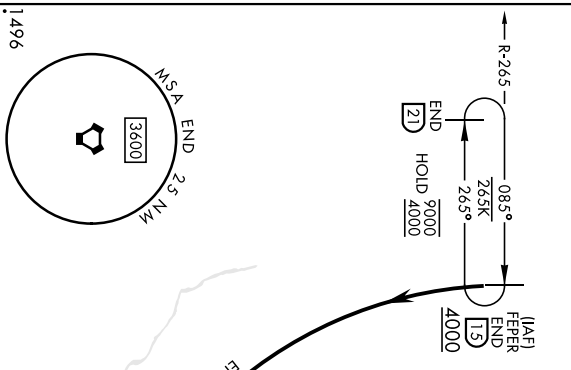
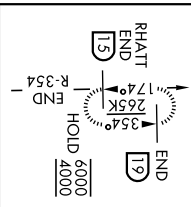
LOC I-JUS 114.55	APCH CRS 355°	Req'd Idg 1307	TDZE 1307	Arpt Elev 1307
----------------------------	-------------------------	--------------------------	---------------------	--------------------------

[USAF] SALS \mathbb{A}_2

MISSED APPROACH: Climb to 4000, intercept END VORTAC R-354 to RHATT and hold.

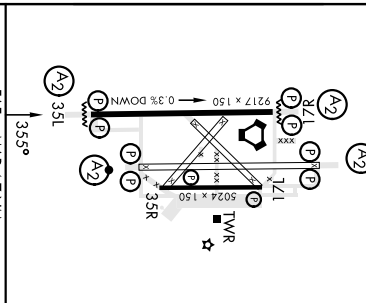
AIS * 115.4 263.15	APP CON 125.45 388.2 EAST	TOWER * 124.05 259.1	GND CON 121.675 289.4	CINC DEL 225.4
------------------------------	-------------------------------------	--------------------------------	---------------------------------	--------------------------

MISSED APCH FIX

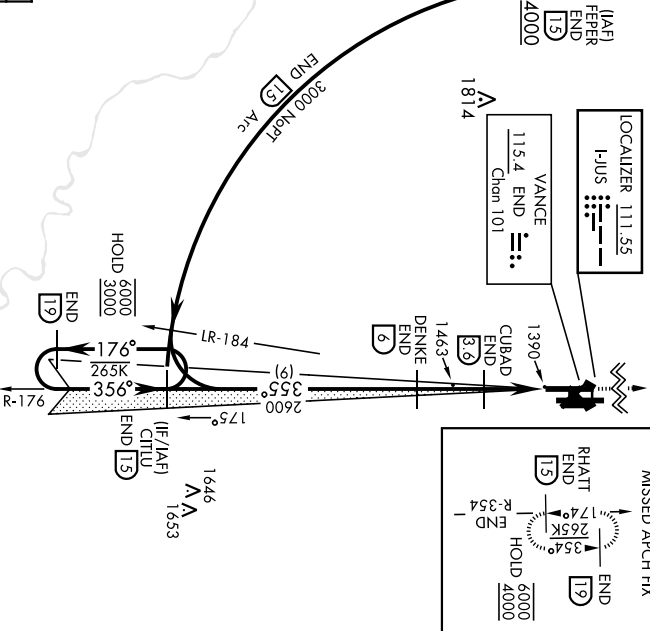


EMERG SAFE ALT 100 NM 4500
ELEV 1307 TDZE 1307

HRL Rwy 17C-35C, 17R-35L
MRL Rwy 17L-35R
REIL Rwy 17L-35R



FAF to MAP 4.7 NM					
Knots	60	90	120	150	180
Min:Sec	4:42	3:08	2:21	1:53	1:34



CATEGORY	A	B	C	D	E
S-ILS 35L	1 507- $\frac{3}{4}$	200			
S-LOC 35L *	1 660- $\frac{3}{4}$	353			
CIRCLING	1 760-1	433	1 800-1 $\frac{1}{2}$	1 900-2	1 940-2 $\frac{1}{4}$
	(500-1)	(500-1)	(500-1 $\frac{1}{2}$)	(600-2)	(700-2 $\frac{1}{4}$)
LOCAL ALTIMETER, WITHOUT LAST STEPDOWN FIX					
S-LOC 35L **	1 720- $\frac{3}{4}$	413 (500- $\frac{3}{4}$)	1 720-1	413 (500-1)	
CIRCLING	1 760-1	453	1 800-1 $\frac{1}{2}$	1 900-2	1 940-2 $\frac{1}{4}$
	(500-1)	(500-1)	(500-1 $\frac{1}{2}$)	(600-2)	(700-2 $\frac{1}{4}$)

36°20'N-97°55'W

ILS or LOC RWY 35L

VANCE AFB (KEND)

ENID, OKLAHOMA

23166

RNAV (GPS) RWY 17C

VANCE AFB (KEND)

WAS	APCH CRS	Rwy Idg	9217
Chn 89616	175°	TDZE	1277
W17A		Api Elev	1307

AL-135 [USAF]

▼ * When AIS inop, increase RVR to 45, vis to 1/2 miles.
 ** When AIS inop, increase CAT AB RVR to 55 and vis to 1 mile, CAT CDE RVR to 60 and vis to 1 1/2 miles.

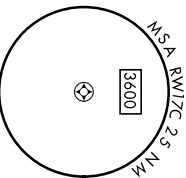
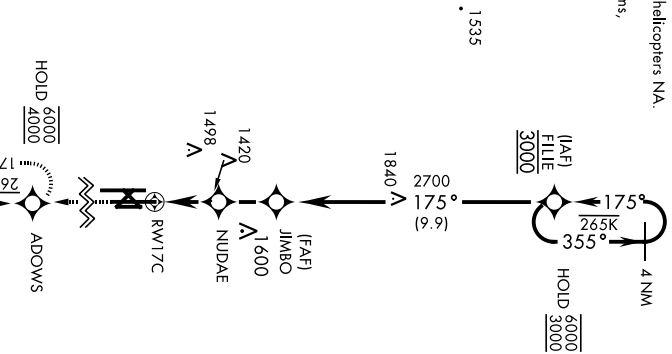
SALSF 

MISSED APPROACH: Climb to 4000 direct ADOWS and hold.

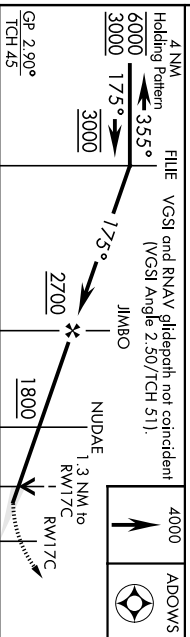
ATIS *	APP CON	(E)	TOWER *	GND CON	CLNC DEL
115.4 263.15	126.75 346.325 (W)		124.05 259.1	121.675 289.4	225.4

*** Circling visibility reduction by helicopters N/A.

For uncompensated Baro-VNAV systems,
 LNAV/VNAV NA below -1.6°C at
 or above 54°C.



EMERG SAFE ALT 100 NM 4500



CATEGORY	A	B	C	D	E
LPV DA	1477/40				
LNAV/ VNAV DA *	1567/40				
LNAV MDA**	1680/40 403 (400-3%)				
CIRCLING	1760-1	453 (500-1)	1800-1 1/2	1900-2	2300-3
			493 (500-1 1/2)	593 (600-2)	993 (1000-3)

ELEV	1307	TDZE	1277
			175°

ENID, OKLAHOMA

36°20'N-97°55'W

VANCE AFB (KEND)

Arrdt 10 01DEC22

RNAV (GPS) RWY 17C

ENID, OKLAHOMA

RNAV (GPS) RWY 17L

APCH CRS	Rwy Idg	5024
196°	TDZE	1282
	Arprt Elev	1307

AL-135 (USAF)

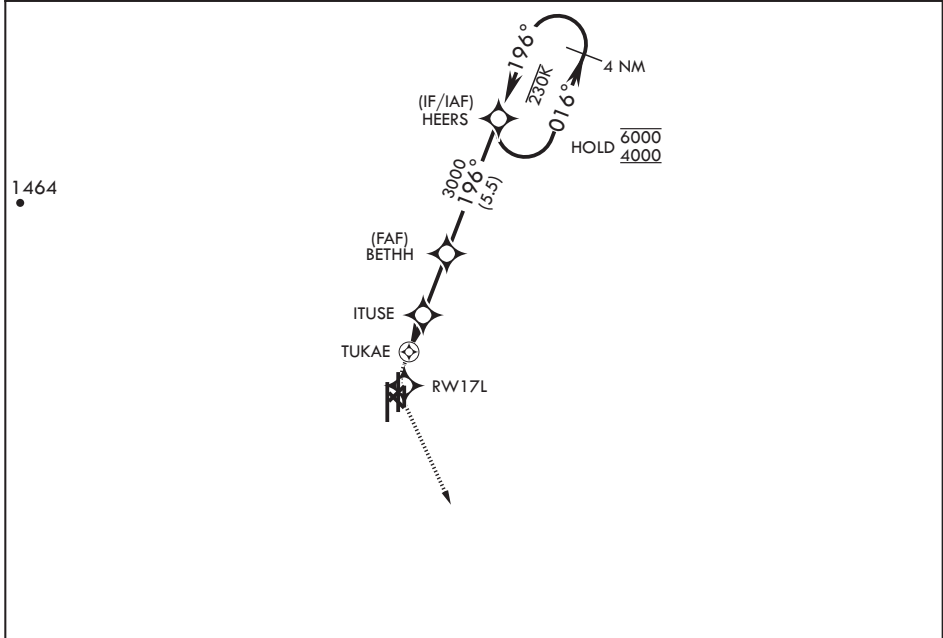
VANCE AFB (KEND)

RNP APCH

MISSED APPROACH: Climb to 1900 then climbing left turn to 4000 direct EBBEN and hold.

⚠ Circling Visibility Reduction by Helicopters NA.

ATIS* 115.4 263.15	APP CON 125.45 388.2 (E) 126.75 346.325 (W)	TOWER* 124.05 259.1	GND CON 121.675 289.4	CLNC DEL 225.4
-----------------------	---------------------------------------------------	------------------------	--------------------------	-------------------



SC-1, 22 FEB 2024 to 21 MAR 2024

SC-1, 22 FEB 2024 to 21 MAR 2024

FOR USE BY 71 FTW AIRCRAFT ONLY

EMERG SAFE ALT 100 NM 4500

1900	4000	EBBEN	HEERS Holding Pattern				ELEV 1307	TDZE 1282																
			<table border="1"> <thead> <tr> <th>CATEGORY</th> <th>A</th> <th>B</th> <th>C</th> <th>D</th> </tr> </thead> <tbody> <tr> <td>LNVA MDA</td> <td>1720-1½</td> <td>438 (500-1½)</td> <td></td> <td>NA</td> </tr> <tr> <td>C CIRCLING</td> <td>1760-1½</td> <td>453 (500-1½)</td> <td></td> <td>NA</td> </tr> </tbody> </table>					CATEGORY	A	B	C	D	LNVA MDA	1720-1½	438 (500-1½)		NA	C CIRCLING	1760-1½	453 (500-1½)		NA	<p>HIRL Rwy 17C-35C, 17R-35L MIRL Rwy 17L-35R REIL Rwy 17L, 35R</p>	
CATEGORY	A	B	C	D																				
LNVA MDA	1720-1½	438 (500-1½)		NA																				
C CIRCLING	1760-1½	453 (500-1½)		NA																				

ENID, OKLAHOMA

36°20'N - 97°55'W

VANCE AFB (KEND)

Orig 24MAR22
TERPS

RNAV (GPS) RWY 17L

ENID, OKLAHOMA

23166

RNAV (GPS) RWY 35C

VANCE AFB (KEND)

WAAS Chen 84880 W35A	APCH CRS 355°	Rwy Idg TDZE 1293 Apl Elev 1307
------------------------------------------	-------------------------	-----------------------------------------------------

AL-135 [USAF]

⚠ * When AIS inop, increase RVR to 45, vis to 7/8 miles.
 *** When AIS inop, increase RVR to 55, vis to 1 mile.
 *** Circling visibility reduction by helicopters NA.

SALSF

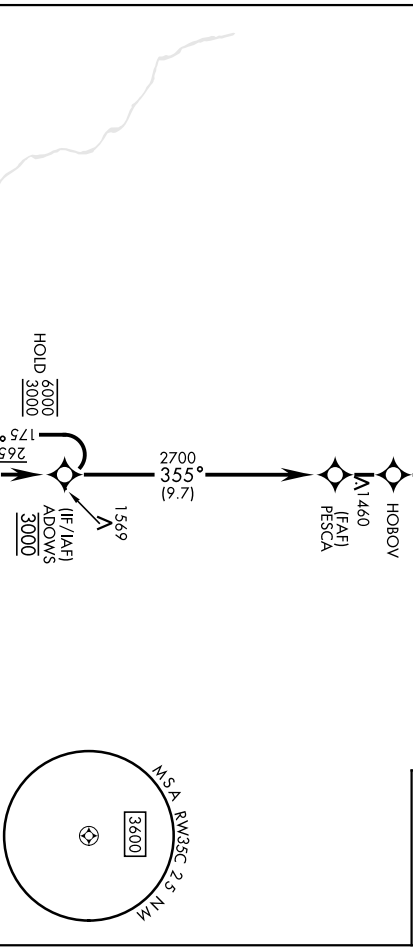
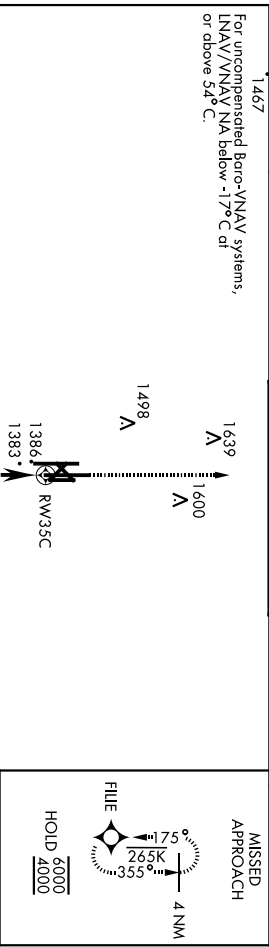
MISSED APPROACH: Climb to 4000 direct FILE and hold.

ATIS * 115.4 263.15	APP CON 125.45 388.2 126.75 346.325 (W)	TOWER * 124.05 259.1
-------------------------------	-------------------------------------------------------------	--------------------------------

GND CON
121.675 289.4

CNLC DEL
225.4

For uncomputerized Baro-VNAV systems,
 LNAV/VNAV NA below -17°C or
 or above 54° C.

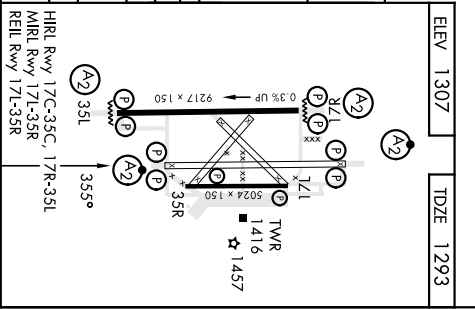


EMERG SAFE ALT 100 NM 4500

4 NM Holding Pattern	ADOWS	VGSI and RNAV glidepath not coincident (VGSI Angle 2.50/TCH 41). PESC A	4000 FILE
6000	175°		
355°	355°		
3000	3000		
GP 2.90° TCH 42		HOBOW 1.2 NM to RW35C	
		2700	
		1720	
		2.1 NM	2.3 NM

CATEGORY	A	B	C	D	E
LPV DA	1543/40	250			
LNAV/ VNAV DA *	1568/40	275			1581/40
LNAV MDA **	1660/40	367			288 (300-¾)

*** CIRCLING	1760-1	453 (500-1)	1800-1½	1900-2	2300-3
			493 (500-1½)	593 (600-2)	993 (1000-3)



ENID, OKLAHOMA

36°20'N-97°55'W

VANCE AFB (KEND)

Arr'd 9 01DEC22

RNAV (GPS) RWY 35C

ENID, OKLAHOMA

RNAV (GPS) RWY 35R

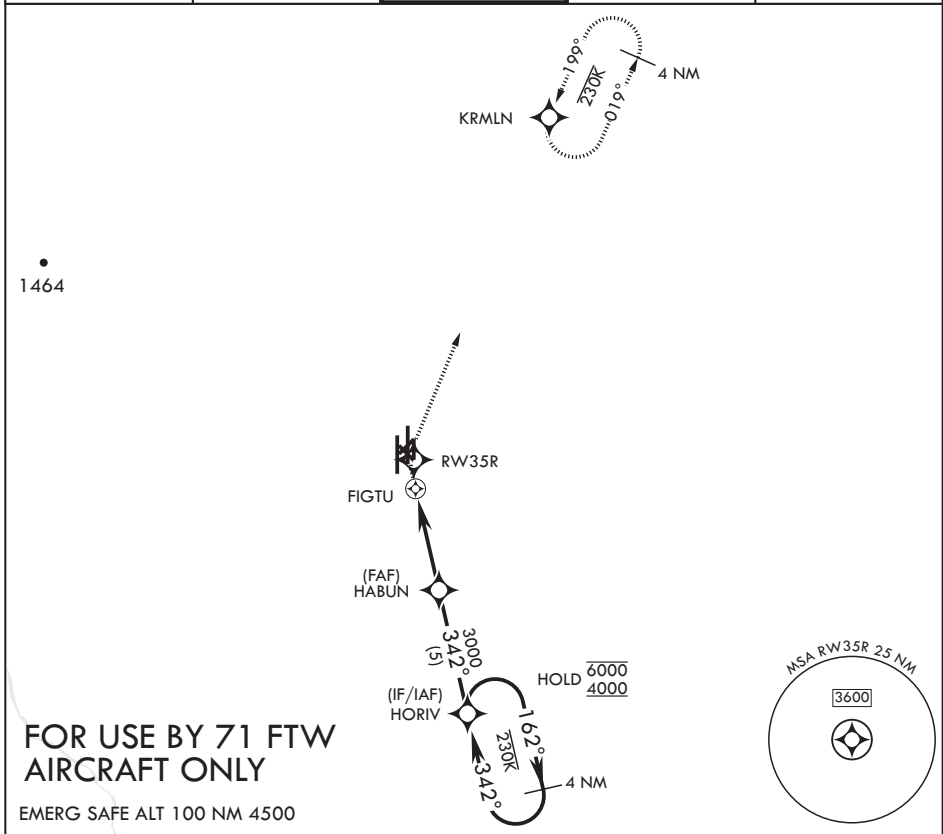
APCH CRS	Rwy Idg	5024
342°	TDZE	1284
	Arprt Elev	1307

AL-135 (USAF)

VANCE AFB (KEND)

RNP APCH	MISSED APPROACH: Climb to 1900 then climbing right turn to 4000 direct KRMLN and hold.

ATIS* 115.4 263.15	APP CON 125.45 388.2 (E) 126.75 346.325 (W)	TOWER* 124.05 259.1	GND CON 121.675 289.4	CLNC DEL 225.4
-----------------------	---------------------------------------------------	------------------------	--------------------------	-------------------



FOR USE BY 71 FTW AIRCRAFT ONLY

EMERG SAFE ALT 100 NM 4500

					ELEV 1307	TDZE 1284
CATEGORY	A	B	C	D		
LNAV MDA	1720-1%	436 (500-1%)	NA	NA	HIRL Rwy 17C-35C, 17R-35L	
CIRCLING	1760-1%	453 (500-1%)	NA	NA	MIRL Rwy 17L-35R REIL Rwy 17L, 35R	

ENID, OKLAHOMA

36°20'N - 97°55'W

VANCE AFB (KEND)

Orig 24MAR22
TERPS

RNAV (GPS) RWY 35R

SC-1, 22 FEB 2024 to 21 MAR 2024

SC-1, 22 FEB 2024 to 21 MAR 2024

ENID, OKLAHOMA

23194

RNAV (GPS) Y RWY 17R

AL-135 [USAF]

VANCE AFB (KEND)

APCH CRS	Rwy Idg	9217
163°	TDZE	1287
	Api Elev	1307

RNP APCH

SALS

RADAR required

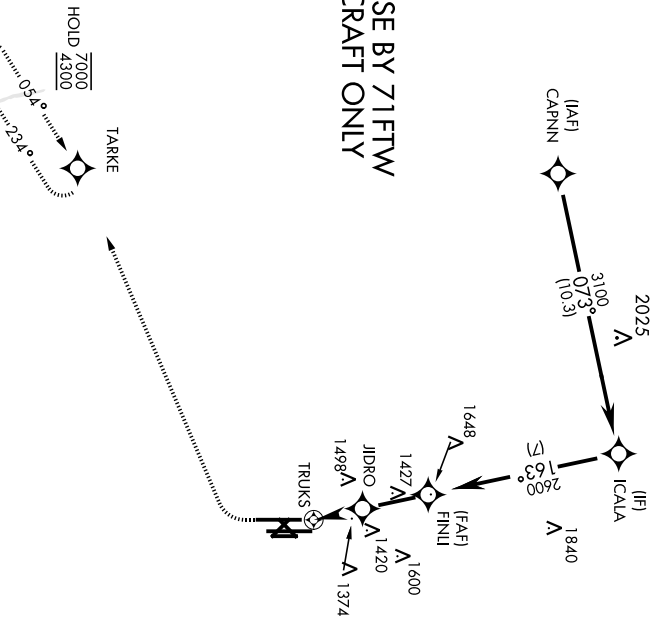
(A2)

When ALS inop, increase vis to 1 mile.
Circling visibility reduction by helicopters not authorized.

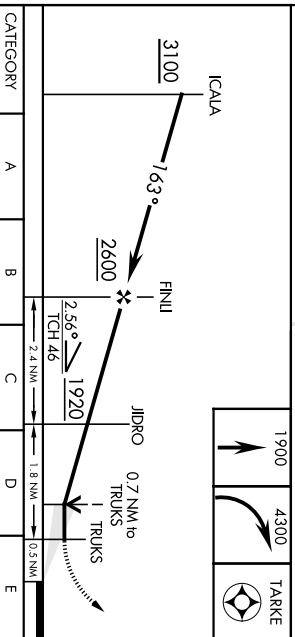
MISSED APPROACH: Climb to 1900, then climbing right turn to 4300 direct TARKE and hold.

ATIS *	App CON	TOWER *	GND CON	CINC DEL
115.4 263.15	125.45 388.2 (E)	124.05 259.1	121.675 289.4	225.4
	126.75 346.325 (W)			

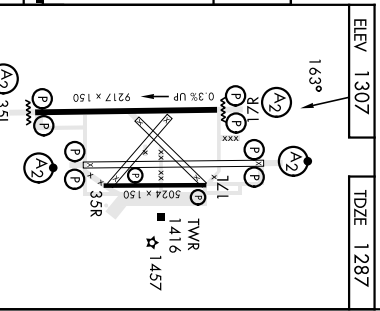
FOR USE BY 71FTW AIRCRAFT ONLY



EMERG SAFE ALT 100 NM 4500



CATEGORY	A	B	C	D	E
LNAV MDA *	1640-3/4 353 (400-3/4)				
CIRCLING	1760-1 453 (500-1)	1800-1 1/2 493 (500-1 1/2)	1900-2 593 (600-2)	2300-3 993 (1000-3)	



ELEV	1307	TDZE	1287
------	------	------	------

ENID, OKLAHOMA

36°20'N-97°55'W

VANCE AFB (KEND)

Amch 6 13JUL23

RNAV (GPS) Y RWY 17R

ENID, OKLAHOMA

APCH CRS	Rwy Idg	9217
003°	THR E	1307
	Api Elev	1307

RNP APCH

▼ RADAR required

* When ALS inop, increase vis to 1 mile.
Circling visibility reduction by helicopters not authorized.

SALS 

MISSED APPROACH: Climb to 1900, then climbing left turn to 4300 direct CERPA and hold.

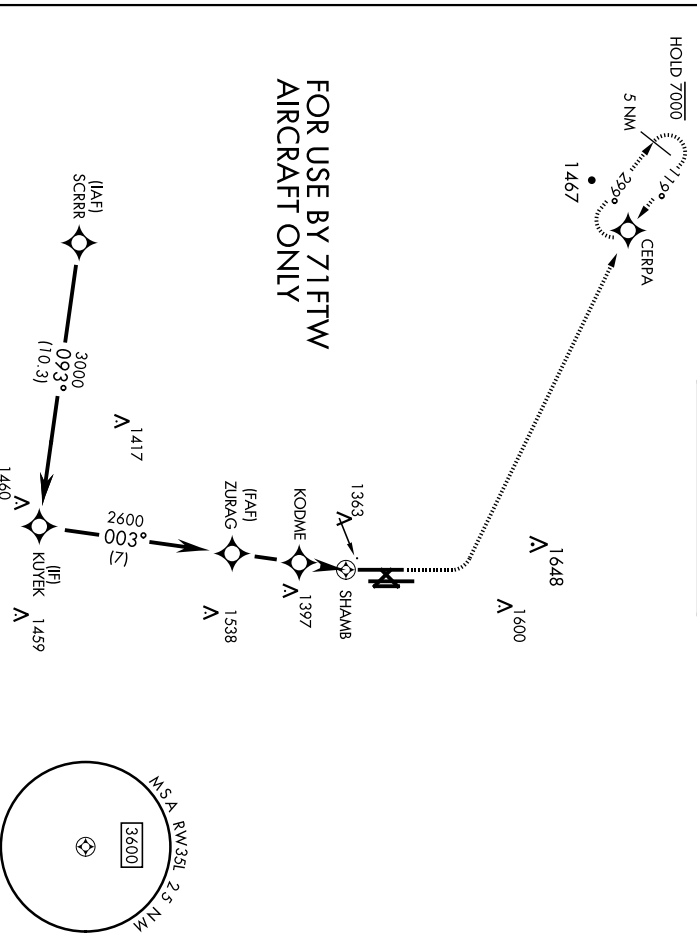
AL-135 [USAF]

VANCE AFB (KEND)

RNAV (GPS) Y RWY 35L

22194

ATIS *	APP CON	TOWER *	GND CON	CINC DEL
115.4 263.15	125.45 388.2 (E) 126.75 346.325 (W)	124.05 259.1	121.675 289.4	225.4



FOR USE BY 71FTW AIRCRAFT ONLY

EMERG SAFE ALT 100 NM 4500

CATEGORY	A	B	C	D	E
	1660 - 3%	353	400 - 3%		
LNAV MDA *					
CIRCLING	1760 -1	453 (500-1)	1800 -1½	1900 -2	2300 -3
			493 (500-1½)	593 (600-2)	993 (1000-3)

ENID, OKLAHOMA

36°20'N-97°55'W

Arr'd 6 13JUL23

RNAV (GPS) Y RWY 35L

VANCE AFB (KEND)

VORTAC END 115.4 Chn 101

APCH CRS 196° TDZE 1282 Arpt Elev 1307

A1-135 [USAF]

VOR/DME RWY 17L

VANCE AFB (KEND)

ATIS * 115.4 263.15 APP CON 125.45 388.2 EAST 126.75 346.325 WEST

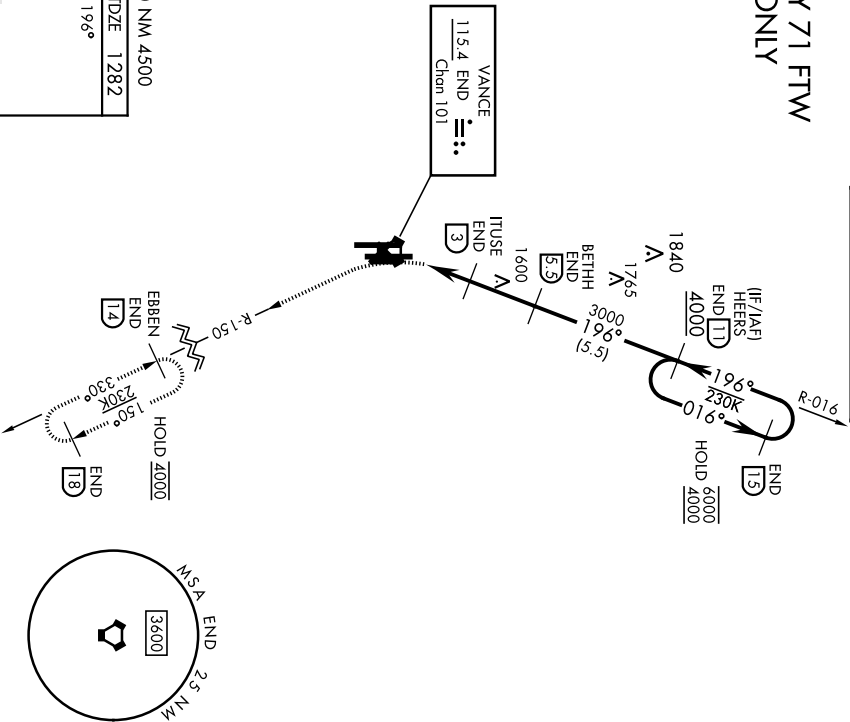
TOWER * 124.05 259.1

GND CON 121.675 289.4

CLNC DEL 225.4

MISSED APPROACH: Climbing left turn to 4000 on heading 165°, Intercept END VORTAC R-150 to EBBEN and hold.

FOR USE BY 71 FTW
ACFT ONLY



EMERG SAFE ALT 100 NM 4500

ELEV 1307 TDZE 1282

196°

17L

1416 TWR

1457

5024 x 150

9217 x 150

A2

A2

A2

A2

A2

A2

A2

A2

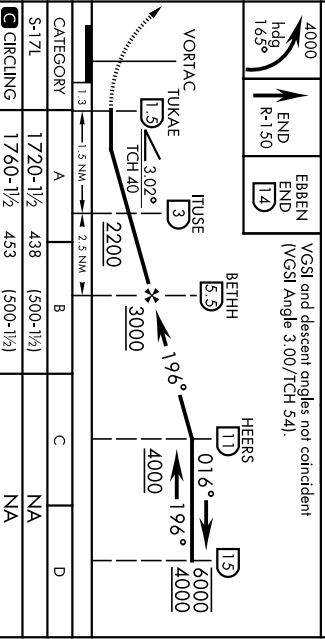
A2

351

HRL Rwy 17C-35C, 17R-35L

MRL Rwy 17L-35R

REL Rwy 17L-35R



CATEGORY	A	B	C	D
S-17L	1720-1½ 438 (500-1½)		NA	
CIRCLING	1760-1½ 453 (500-1½)		NA	

36°20'N-97°55'W

VANCE AFB (KEND)

VOR/DME RWY 17L

END, OKLAHOMA

23166

VORTAC END **115.4** Chon 101

APCH CRS **342°** RWY Idg TDZE Elev **1284** Apt Elev **1307**

VOR/DME RWY 35R

A-135 [USAF]

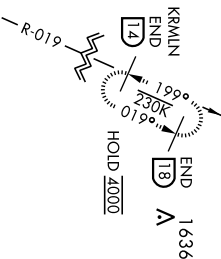
VANCE AFB (KEND)

Visibility reduction by helicopters NA

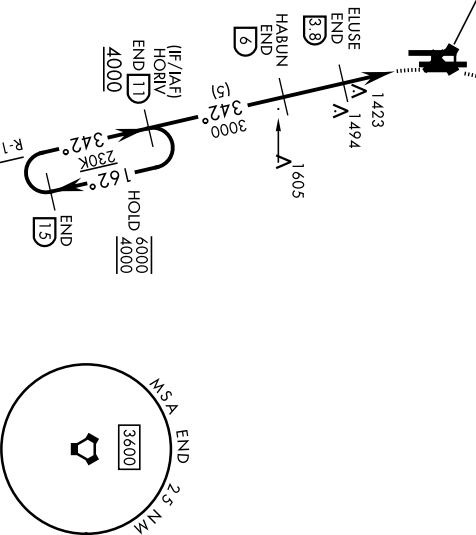
MISSED APPROACH: Climbing right turn to 4000 on heading 005° Intercept END VORTAC R-019 to KRMLN and hold.

AITS ★ 115.4 263.15	APP CON 125.45 388.2 EAST 126.75 346.325 WEST	TOWER ★ 124.05 259.1	GND CON 121.675 289.4	CLNC DEL 225.4
-------------------------------	-------------------------------------------------------------------	--------------------------------	---------------------------------	--------------------------

**FOR USE BY 71 FTW
ACFT ONLY**

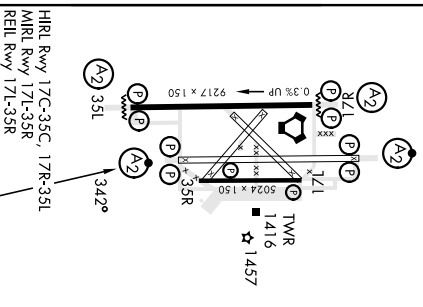


VANCE
115.4 END
Chon 101



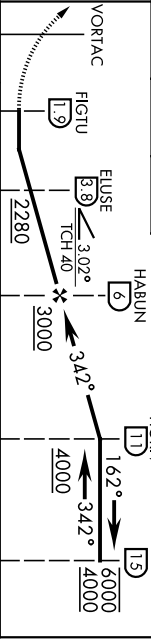
EMERG SAFE ALT 100 NM 4500

ELEV 1307 TDZE 1284



HRL RWY 17C-35C 17R-35L
MRL RWY 17L-35R
REL RWY 17L-35R

4000	hdg 005°	END R-019	KRMLN END [14]	VGSI and descent angles not coincident (VGSI Angle 3.00/TCH 50).
------	----------	-----------	----------------	------------------------------------------------------------------



CATEGORY	A	B	C	D
S-35R	1720-13% 436 (500-13#)		NA	
CIRCLING	1760-13% 453 (500-13#)		NA	

END, OKLAHOMA

36°20'N-97°55'W

VANCE AFB (KEND)

Orig 24MAR22

VOR/DME RWY 35R

VOR/DME or TACAN RWW 17C

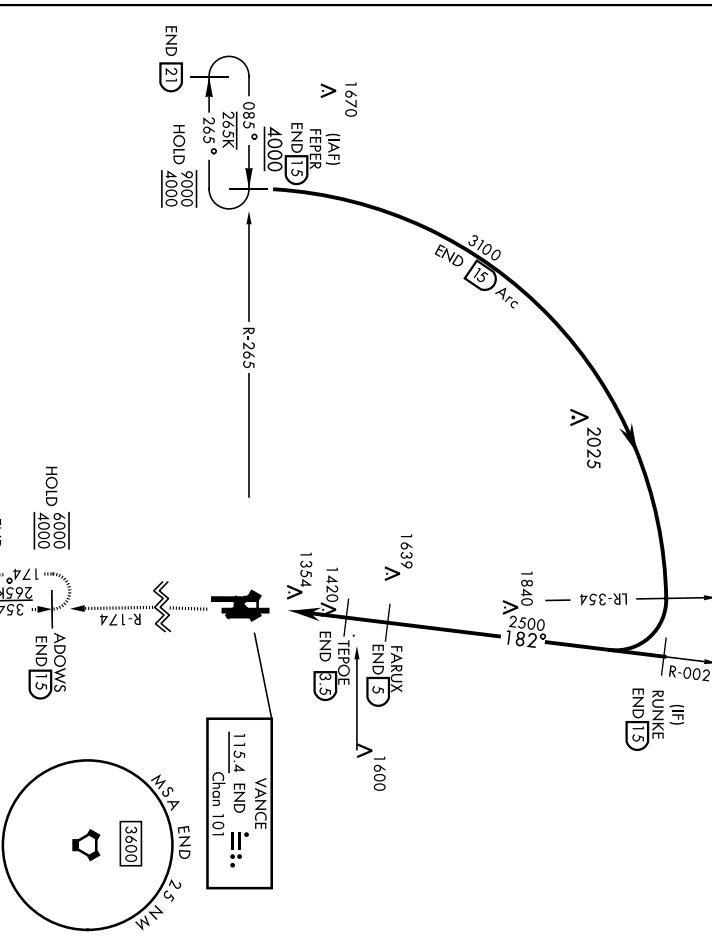
AL-135 (USAF)

VANCE AFB (KEND)

VORTAC END	APCH CRS	Rwy/Idg	9217
115.4	182°	TDZE	1277
Chan 101		Appt Elev	1307

▼ * When AIS inop, increase CAT AB RVR to 55 and vis to 1 mile, SALSIF MISSED APPROACH: Climb to 4000, intercept CAT CDE RVR to 60 and vis to 1 1/8 miles.

AIS *	APP CON	TOWER *	GND CON	CINC DEL
115.4 263.15	125.45 388.2 EAST 126.75 346.325 WEST	124.05 259.1	121.675 289.4	225.4



EMERG SAFE ALT 100 NM 4500

4000	ADOWS
END	END
R-174	15

ELEV 1307	TDZE 1277
-----------	-----------

CATEGORY	A	B	C	D	E
S-17C *	1680/40	403 (400-3A)	1680/50	403 (400-1)	2300-3
ⓐ CIRCLING	1760-1	453 (500-1)	1800-1 1/2	1900-2	2300-3
			493 (500-1 1/2)	593 (600-2)	993 (1000-3)

HRL Rwy 17C-35C, 17R-35L
MRL Rwy 17L-35R
REIL Rwy 17L-35R

36°20'N-97°55'W

VANCE AFB (KEND)

VOR/DME or TACAN RWW 17C

VOR/DME or TACAN Rwy 17R

AL-135 [USAF]

VANCE AFB (KEND)

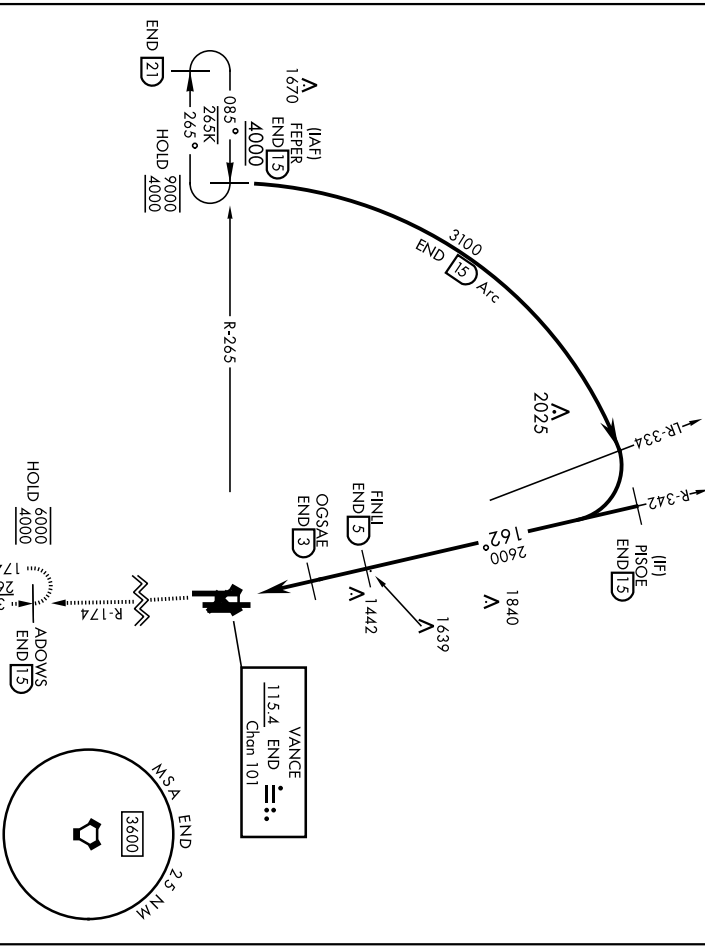
VOR/AC END 115.4 Chon 101	APCH CRS 162°	Rwy/Idg TDZE Appt Elev 1287 1307
----------------------------------------	-------------------------	------------------------------------------------------------

▼ * When AIS Inop, increase CAT Ab vis to 1 mile, CAT CDE vis to 1½ miles.

SALS **(A2)**

MISSED APPROACH: Climb to 4000, intercept
END VORTAC R-174 to ADOWS and hold.

ATIS * 115.4 263.15	APP CON 125.45 388.2 EAST 126.75 346.325 WEST	TOWER * 124.05 259.1	GND CON 121.675 289.4	CINC DEL 225.4
-------------------------------	-------------------------------------------------------------------	--------------------------------	---------------------------------	--------------------------



EMERG SAFE ALT 100 NM 4500

CATEGORY	A	B	C	D	E
	1680-¾ 393 (400-¾)	1680-7/8	393	(400-7/8)	
S-17R *	1680-¾ 393 (400-¾)	1900-2	2500-3		
CIRCLING	1760-1 453 (500-1)	493 (500-1½)	593 (600-2)	993 (1000-3)	

ELEV 1307	TDZE 1287
330	
162°	
0.3% UP	
9217 x 150	
121	
5024 x 150	
1416	
1457	

36°20'N-97°55'W

VOR/DME or TACAN Rwy 17R

VANCE AFB (KEND)

VOR/DME or TACAN Rwy 35C

VOR/AC END 115.4 Chan 101	APCH CRS 349°	Rwy/Idg TDZE Appt Elev	9217 1293 1307
-----------------------------------------------	-------------------------	------------------------------	-------------------------------------------

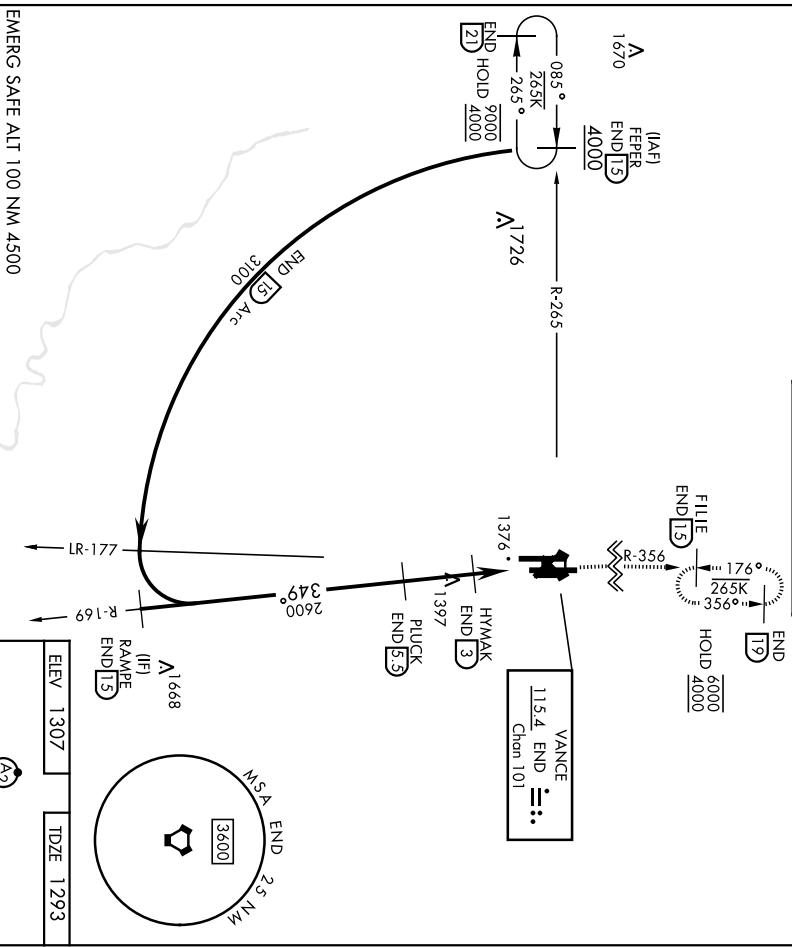
AL1-35 [USAF]

VANCE AFB (KEND)

✶ When AIS Inop, increase FVR to 55, vis to 1 mile.

SAISF MISSED APPROACH: Climb to 4000, intercept END VORTAC R-356 to FILE and hold.

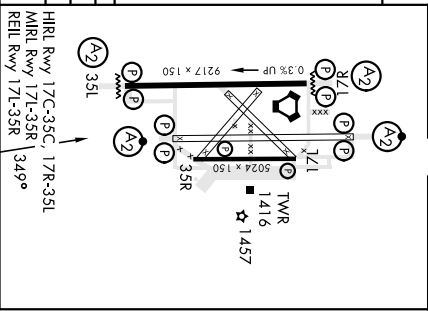
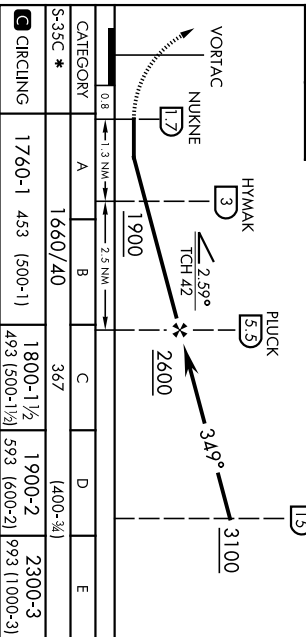
ATIS ✶ 115.4 263.15	APP CON 125.45 388.2 EAST 126.75 346.325 WEST	TOWER ✶ 124.05 259.1	GND CON 121.675 289.4	CLNC DEL 225.4
-------------------------------	-------------------------------------------------------------------	--------------------------------	---------------------------------	--------------------------



EMERG SAFE ALT 100 NM 4500

4000	FILE
END	END
R-356	15

ELEV 1307	TDZE 1293
-----------	-----------



S-35C ✶	1660/40	367	(400-34)	2300-3
CIRCLING	1760-1 453 (500-11)	1800-1½	1900-2	2300-3
		493 (500-1½)	593 (600-2)	993 (1000-3)

ENDD, OKLAHOMA

36°20'N-97°55'W

VANCE AFB (KEND)

Arrch 5 24FEB22

VOR/DME or TACAN Rwy 35C

VOR/DME or TACAN RMY 35L

AL-135 [USAF]

VANCE AFB (KEND)

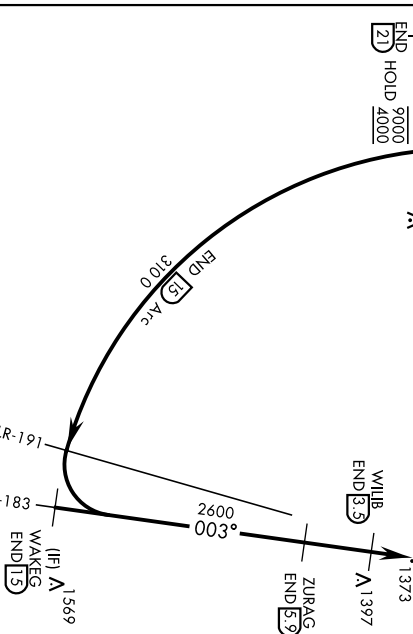
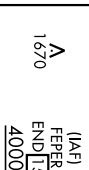
VOR/AC END 115.4 Chan 101	APCH CRS 003°	Rwy Idg TDZE Appt Elev 1307 1307
-----------------------------------------------	-------------------------	------------------------------------------------------------

▼ * When A/Ds moop, increase vis to 1 mile.

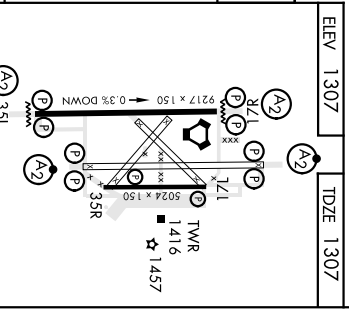
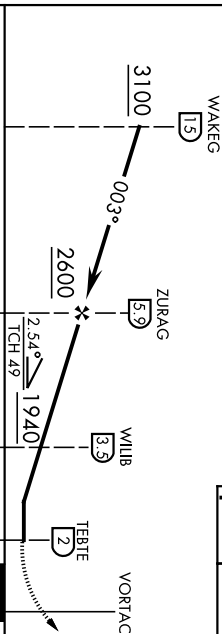
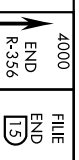
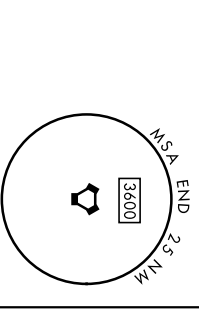
SALS 

MISSED APPROACH: Climb to 4000, intercept
END VORTAC R-356 to FILE and hold.

ATIS * 115.4 263.15	APP CON 125.45 388.2 EAST 126.75 346.325 WEST	TOWER * 124.05 259.1	GND CON 121.675 289.4	CINC DEL 225.4
-------------------------------	-------------------------------------------------------------------	--------------------------------	---------------------------------	--------------------------



EMERG SAFE ALT 100 NM 4500



CATEGORY	A	B	C	D	E
S-35L *	1640-¾	333	(400-¾)		
☑ CIRCLING	1760-1	453 (500-1)	1800-1½	1900-2	2300-3
			493 (500-1½)	593 (600-2)	993 (1000-3)

END, OKLAHOMA

36° 20' N - 97° 55' W

VANCE AFB (KEND)

Amch 5 24FE822

VOR/DME or TACAN RMY 35L