

BEVVR ONE DEPARTURE (RNAV)  
(BEVVR1.BEVVR) 19JUL18

EAGLE COUNTY RGNL (EGTE)  
EAGLE, COLORADO

**DEPARTURE ROUTE DESCRIPTION**

**TAKEOFF RUNWAY 25:** Begin a climbing left turn as soon as practicable but no later than DER heading 206° to 7100, then direct COPER, then on depicted route to cross APRES at or above 13100, thence. . . .

. . . .on (assigned) transition, maintain 15000. Expect filed altitude 10 minutes after departure.

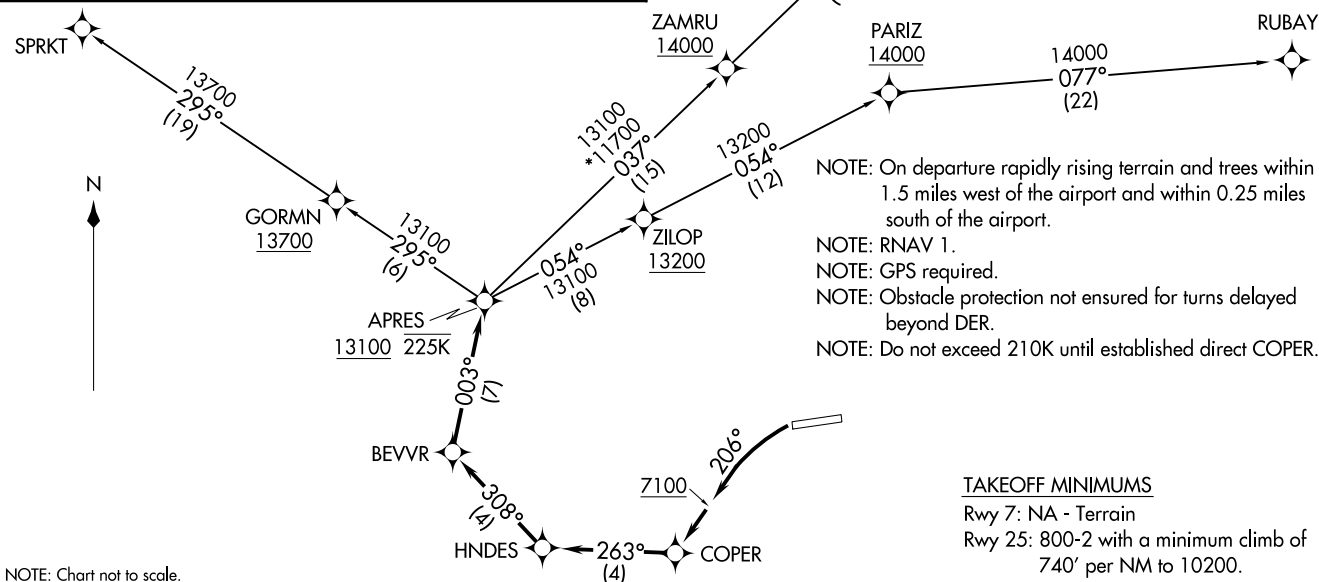
BELGN TRANSITION (BEVVR1.BELGN)

RUBAY TRANSITION (BEVVR1.RUBAY)

SPRKT TRANSITION (BEVVR1.SPRKT)

ATIS  
135.575  
CLNC DEL  
124.75  
DENVER CLNC DEL  
124.75  
(When tower closed)  
GND CON  
121.8  
EAGLE TOWER\*  
119.8  
DENVER CENTER  
128.65 282.2

**TOP ALTITUDE:  
15000**



NOTE: On departure rapidly rising terrain and trees within 1.5 miles west of the airport and within 0.25 miles south of the airport.  
NOTE: RNAV 1.  
NOTE: GPS required.  
NOTE: Obstacle protection not ensured for turns delayed beyond DER.  
NOTE: Do not exceed 210K until established direct COPER.

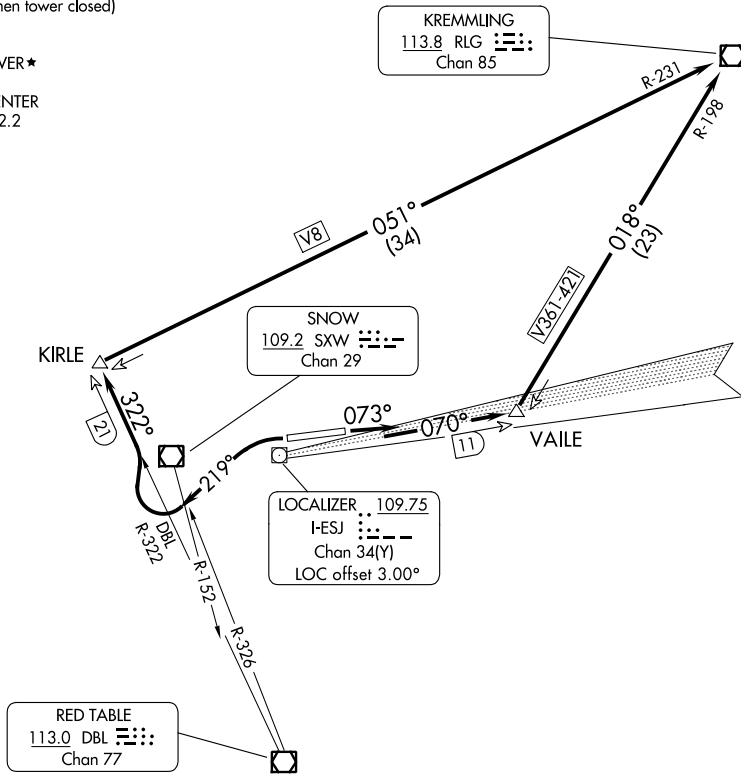
TAKEOFF MINIMUMS  
Rwy 7: NA - Terrain  
Rwy 25: 800-2 with a minimum climb of 740' per NM to 10200.

(BEVVR1.BEVVR) 18312  
BEVVR ONE DEPARTURE (RNAV)

AL-6403 (FAA)

EAGLE COUNTY RGNL (EGTE)  
EAGLE, COLORADO

ATIS  
135.575  
CLNC DEL  
124.75  
DENVER CLNC DEL  
124.75 (When tower closed)  
GND CON  
121.8  
EAGLE TOWER ★  
119.8  
DENVER CENTER  
128.65 282.2



SW-1, 22 FEB 2024 to 21 MAR 2024

SW-1, 22 FEB 2024 to 21 MAR 2024

### TAKEOFF MINIMUMS

Rwy 7: Standard with minimum climb of 580' per NM to 12000.  
Rwy 25: Standard with minimum climb of 815' per NM to 9200.

NOTE: Chart not to scale.



### DEPARTURE ROUTE DESCRIPTION

**TAKEOFF RUNWAY 7:** Climb heading 073° and I-ESJ east course to VAILE INT/I-ESJ 11 DME then left turn on RLG R-198 to RLG VOR/DME.

**TAKEOFF RUNWAY 25:** Climbing left turn heading 219°, until crossing SXW R-152 or DBL R-326, then turn right on DBL R-322 to KIRLE INT/DBL 21 DME then turn right on RLG R-231 to RLG VOR/DME.

(EKR3.EKR) 23334


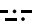
# MEEKER THREE DEPARTURE

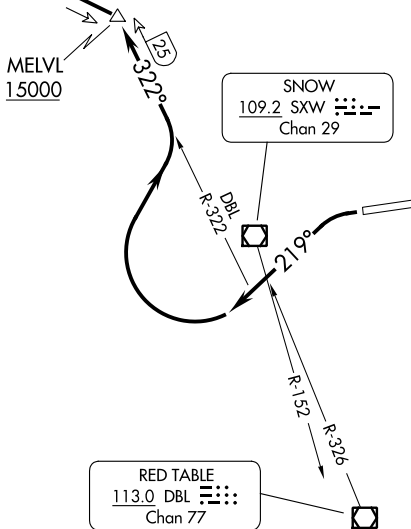
AL-6403 (FAA)

EAGLE COUNTY RGNL (E/G/E)  
EAGLE, COLORADO

**TOP ALTITUDE:  
15000**

ATIS 135.575  
 CLNC DEL 124.75  
 DENVER CLNC DEL 124.75  
 124.75 (When tower closed)  
 GND CON 121.8  
 EAGLE TOWER★ 119.8  
 DENVER CENTER 128.65 282.2

 R-097  
 MEEKER  
 115.2 EKR   
 Chan 99



### TAKEOFF MINIMUMS

Rwy 7: NA - ATC

Rwy 25: Standard with minimum climb of 815' per NM to 15000.

NOTE: Chart not to scale.



### DEPARTURE ROUTE DESCRIPTION

**TAKEOFF RUNWAY 25:** Climbing left turn heading 219°, upon crossing SXW R-152 or DBL R-326 turn right via DBL R-322 to MELVL INT/DBL 25 DME then turn left via EKR R-097 to EKR VOR/DME. Cross MELVL at or above 15000, expect filed altitude 10 minutes after departure.

# MEEKER THREE DEPARTURE

(EKR3.EKR) 19JUL18

EAGLE, COLORADO  
EAGLE COUNTY RGNL (E/G/E)

SW-1, 22 FEB 2024 to 21 MAR 2024

SW-1, 22 FEB 2024 to 21 MAR 2024