

LOC I-EN	APP CRS	Rwy Idg	6201
108.9	018°	TDZE	488
		Apt Elev	488

ILS or LOC RWY 2

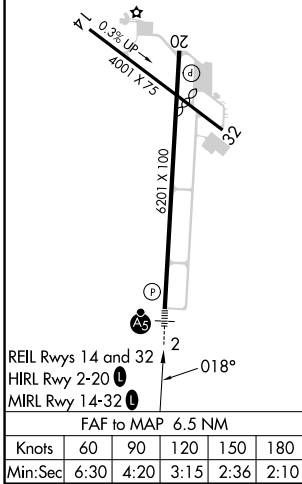
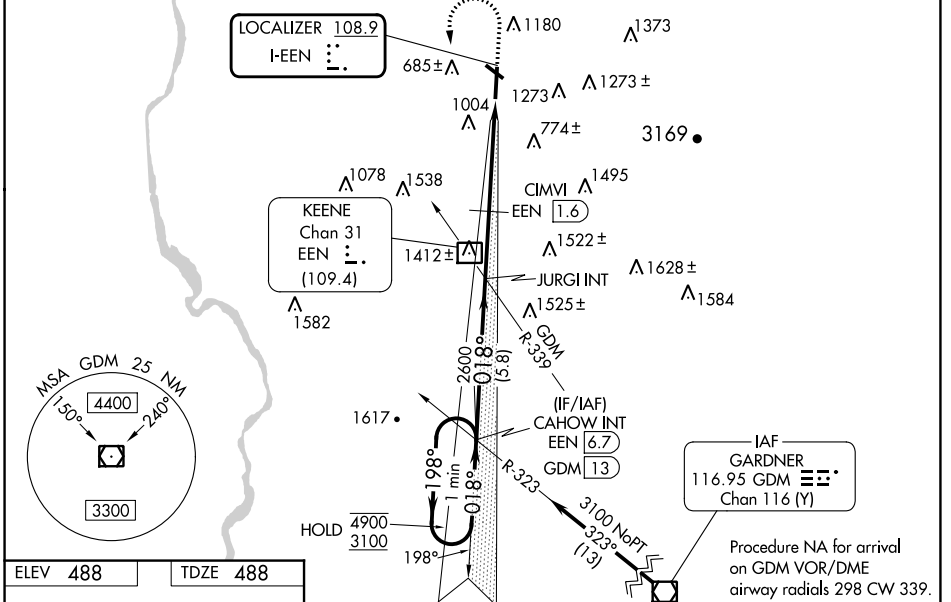
DILLANT/HOPKINS (EEN)

DME required for LOC only.

NA Circling Rwy 32 NA at night. Rwy 2 helicopter visibility reduction below ¼ SM NA. Inop table does not apply to S-ILS 2 all Cats, S-LOC 2 Cats C/D and CIMVI fix minimums S-LOC 2 Cat A. For inop ALS, increase S-LOC 2 Cat A visibility to 1¼ SM and increase CIMVI fix minimums S-LOC 2 Cat B visibility to 1¼ SM and Cat C/D visibility to 2½ SM. DME from EEN DME. DME use requires simultaneous reception of I-EN and EEN DME.

MALS MISSED APPROACH: Climb to 1540 then climbing left turn to 3100 on heading 200° and GDM VOR/DME R-323 to CAHOW INT/ GDM VOR/DME 13 DME and hold.

AWOS-3PT 119.025	BOSTON CENTER 123.75 338.2	UNICOM 123.0 (CTAF) 0
----------------------------	--------------------------------------	---------------------------------



One Minute Holding Pattern	CAHOW INT EEN (6.7)	JURGI INT	EEN DME	CIMVI EEN (1.6)	EEN (3.2)	EEN (5.7)
4900 ← 198°	3100 ← 018°	2600	2600	1840		
GS 3.00°	TCH 43					
VGSI and ILS glidepath not coincident (VGSI Angle 3.00/TCH 39).						
-5.8 NM		-2.4 NM		-1.6	2.5	
CATEGORY	A	B	C	D		
S-ILS 02	860-1 372 (400-1)					
S-LOC 02	1840-1	1352 (1400-1)	1840-3	1352 (1400-3)		
CIRCLING	1840-1¼ 1352 (1400-1¼)	1840-1½ 1352 (1400-1½)	1840-3	1980-3	1492 (1500-3)	
CIMVI FIX MINIMUMS (DME REQUIRED)						
S-LOC 02	1320-1	832 (900-1)	1320-1⅞	832 (900-1⅞)		
CIRCLING	1420-1¼ 932 (1000-1¼)	1480-1½ 992 (1000-1½)	1760-3	1980-3	1272 (1300-3)	

NE-1, 22 FEB 2024 to 21 MAR 2024

NE-1, 22 FEB 2024 to 21 MAR 2024

WAAS CH 65708	APP CRS 018°	Rwy Idg TDZE 488	6201
W02A		Apt Elev 488	


RNAV (GPS) RWY 2

DILLANT/HOPKINS (EEN)

RNP APCH - GPS.

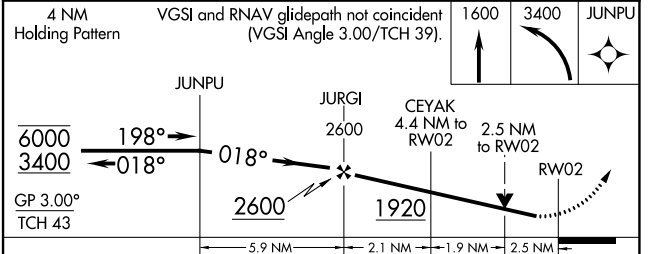
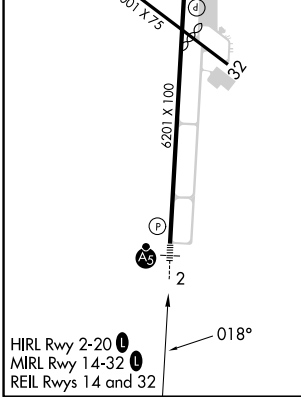
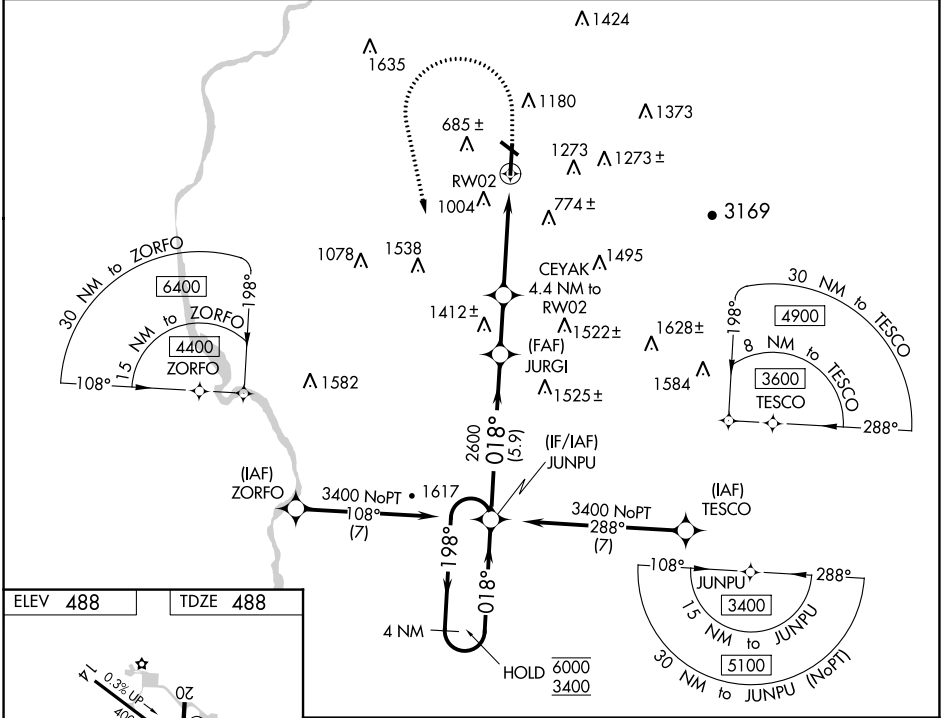
⚠ Circling Rwy 32 NA at night. Rwy 2 helicopter visibility reduction below 3/4 SM NA. Inop table does not apply to LPV all Cats and LNAV Cat A. For inop ALS, increase LNAV Cat B visibility to 1 1/4 SM.

⚠ -21°C

MALSR 

MISSED APPROACH: Climb to 1600 then climbing left turn to 3400 direct JUNPU and hold.

AWOS-3PT 119.025	BOSTON CENTER 123.75 338.2	UNICOM 123.0 (CTAF) ①
----------------------------	--------------------------------------	---------------------------------



CATEGORY	A	B	C	D
LPV DA	843-1 355 (400-1)			
LNAV MDA	1340-1	852 (900-1)	1340-2	852 (900-2)
C CIRCLING	1380-1 1/4 892 (900-1 1/4)	1480-1 1/2 992 (1000-1 1/2)	1760-3 1272 (1300-3)	1980-3 1492 (1500-3)

NE-1, 22 FEB 2024 to 21 MAR 2024

NE-1, 22 FEB 2024 to 21 MAR 2024