

WAAS CH <b>93628</b> <b>W25A</b>	APP CRS <b>254°</b>	Rwy Idg TDZE Apt Elev	<b>5000</b> <b>1122</b> <b>1122</b>
--	------------------------	-----------------------------	---

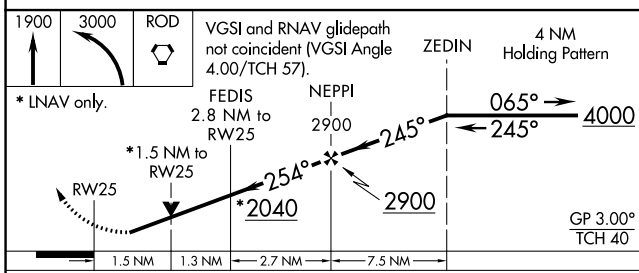
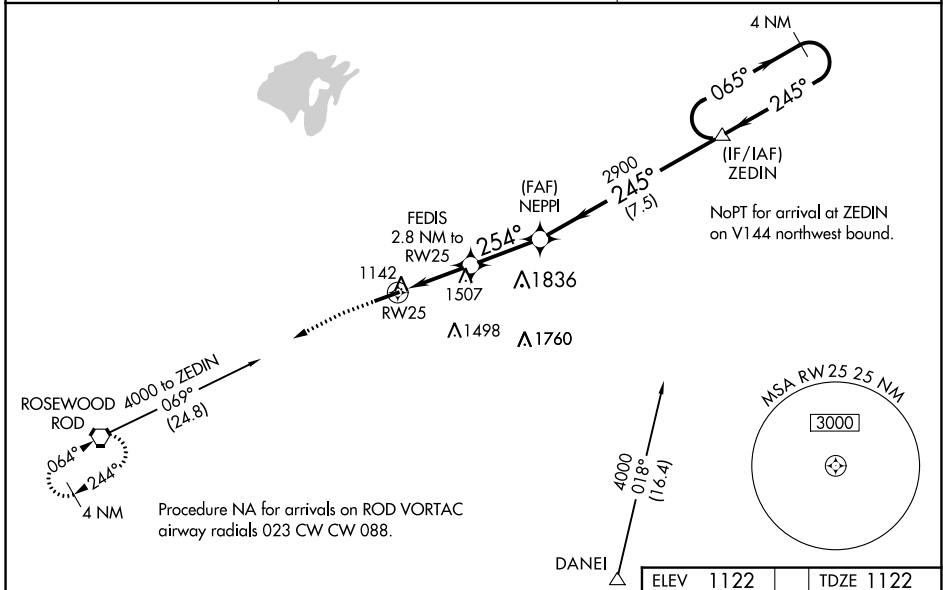
# RNAV (GPS) RWY 25

BELLEFONTAINE RGNL (E.D.J)

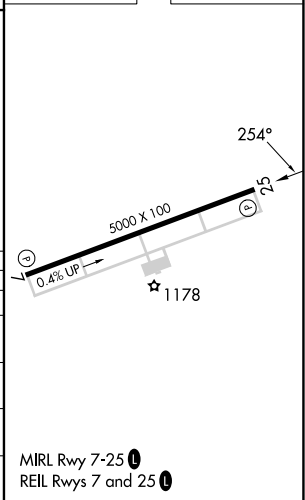
**⚠️ NA** For uncompensated Baro-VNAV systems, LNAV/VNAV NA below -17°C (2°F) or above 36°C (96°F). DME/DME RNP-0.3 NA. Helicopter visibility reduction below 3/4 SM NA. When local altimeter setting not received, use James M. Cox Dayton Intl altimeter setting and increase all DA 94 feet and increase all MDA 100 feet and increase LPV and LNAV/VNAV visibility all Cats 3/8 mile and increase LNAV Cat B and Circling Cat B visibility 1/4 mile and increase LNAV Cats C and D visibility 1/2 mile and increase Circling Cat C visibility 1/2 mile and increase Circling Cat D visibility 1/4 mile. VDP and Baro-VNAV NA with James M. Cox Dayton Intl altimeter setting.

**MISSED APPROACH:** Climb to 1900 then climbing left turn to 3000 direct ROD VORTAC and hold.

AWOS-3 <b>118.075</b>	COLUMBUS APP CON <b>118.425 294.5</b>	UNICOM <b>122.8 (CTAF) 0</b>
--------------------------	--	---------------------------------



CATEGORY	A	B	C	D
LPV DA		1457-1 1/8	335 (400-1 1/8)	
LNAV/VNAV DA		1664-1 7/8	542 (600-1 7/8)	
LNAV MDA	1820-1	698 (700-1)	1820-2	698 (700-2)
CIRCLING	1820-1	698 (700-1)	1860-2 738 (800-2)	1980-2 3/4 858 (900-2 3/4)



MIRL Rwy 7-25 0  
REIL Rwy 7 and 25 0

EC-2, 22 FEB 2024 to 21 MAR 2024

EC-2, 22 FEB 2024 to 21 MAR 2024

WAAS CH <b>42628</b> <b>W07A</b>	APP CRS <b>074°</b>	Rwy Idg TDZE Apt Elev	<b>5000</b> <b>1112</b> <b>1122</b>
--	------------------------	-----------------------------	---

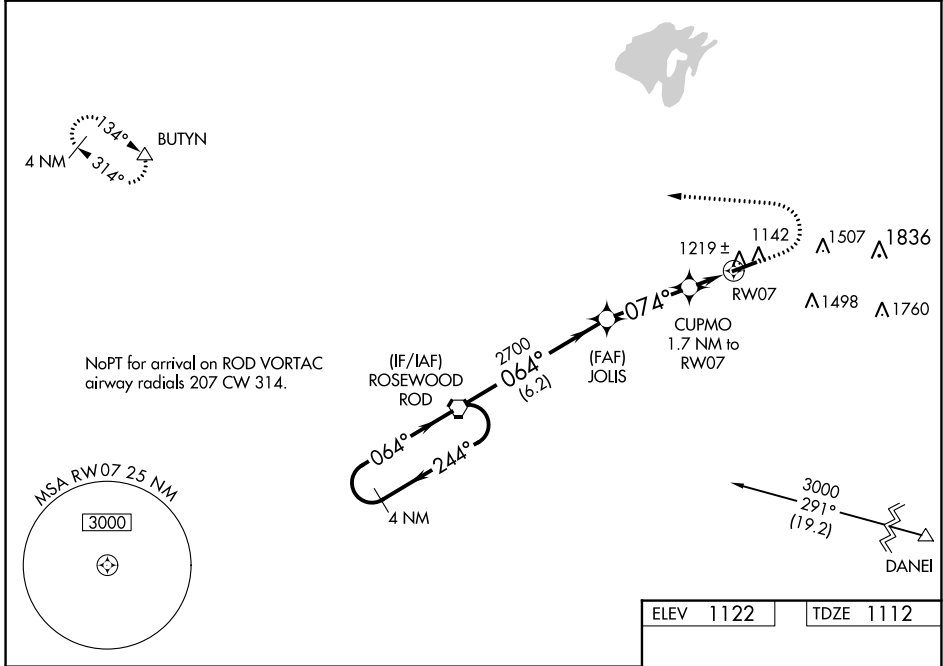
# RNAV (GPS) RWY 7

BELLEFONTAINE RGNL (E.D.J)

**NA** For uncompensated Baro-VNAV systems, LNAV/VNAV NA below -17°C (2°F) or above 37°C (98°F). DME/DME RNP-0.3 NA. VDP and Baro-VNAV NA with James M. Cox Dayton Intl altimeter setting. When local altimeter setting not received, use James M. Cox Dayton Intl altimeter setting; increase LPV DA to 1456 feet, LNAV/VNAV DA to 1598 feet, and all MDAs 100 feet, and increase LPV and LNAV/VNAV all Cats visibility ¼ SM, LNAV Cats C and D visibility ⅜ SM, and Circling Cat C visibility ½ SM and Cat D visibility ¼ SM.

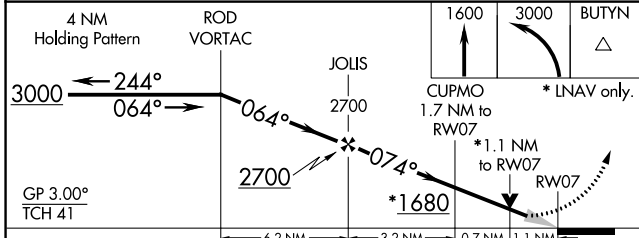
**MISSED APPROACH:**  
Climb to 1600 then climbing left turn to 3000 direct BUTYN and hold.

AWOS-3 <b>118.075</b>	COLUMBUS APP CON <b>118.425 294.5</b>	UNICOM <b>122.8 (CTAF) 0</b>
--------------------------	--	---------------------------------



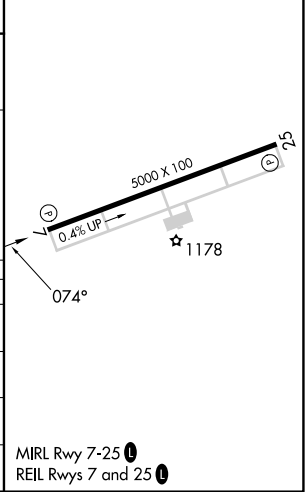
EC-2, 22 FEB 2024 to 21 MAR 2024

EC-2, 22 FEB 2024 to 21 MAR 2024



ELEV 1122	TDZE 1112
-----------	-----------

CATEGORY	A	B	C	D
LPV DA		1362-7/8	250 (300-7/8)	
LNAV/VNAV DA		1504-13/8	392 (400-13/8)	
LNAV MDA		1480-1	368 (400-1)	
CIRCLING	1620-1 498 (500-1)	1640-1 518 (600-1)	1860-2 738 (800-2)	1980-2 3/4 858 (900-2 3/4)

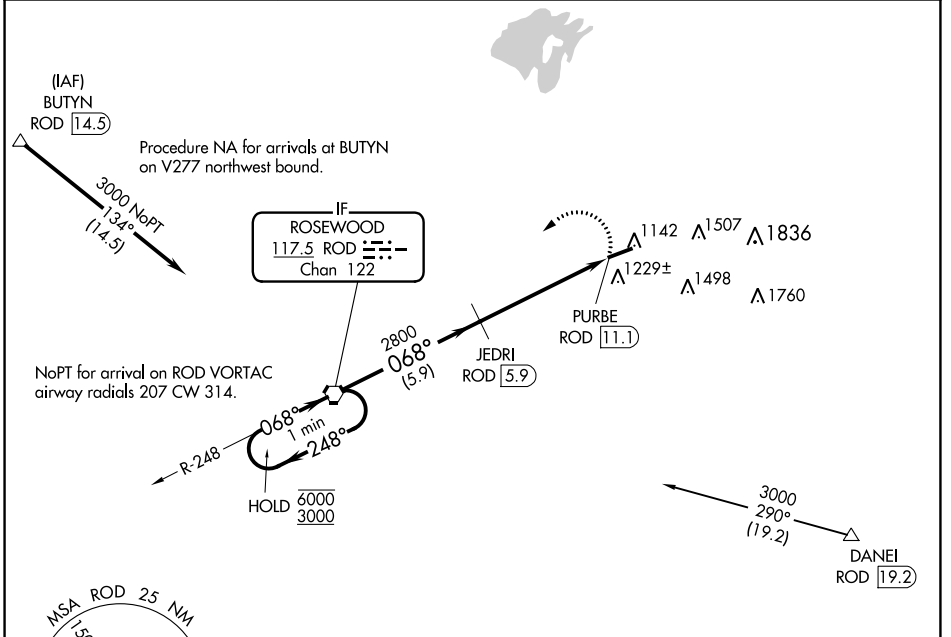


VORTAC ROD <b>117.5</b> Chan <b>122</b>	APP CRS <b>068°</b>	Rwy Idg TDZE <b>1112</b> Apt Elev <b>1122</b>	<b>5000</b> <b>1112</b> <b>1122</b>
---	------------------------	---	---

# VOR RWY 7

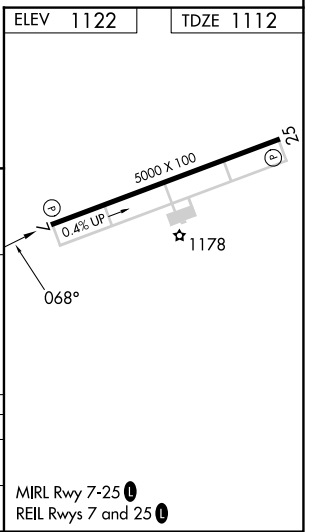
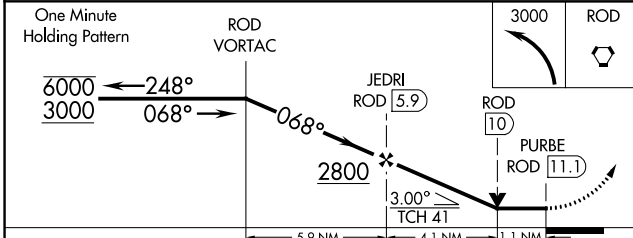
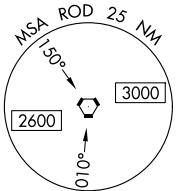
BELLEFONTAINE RGNL (EDJ)

DME required.		MISSED APPROACH: Climbing left turn to 3000 direct ROD VORTAC and hold.
AWOS-3 <b>118.075</b>	COLUMBUS APP CON <b>118.425 294.5</b>	UNICOM <b>122.8 (CTAF) 0</b>



EC-2, 22 FEB 2024 to 21 MAR 2024

EC-2, 22 FEB 2024 to 21 MAR 2024



CATEGORY	A	B	C	D
S-7	1480-1	368 (400-1)		1480-1¼ 368 (400-1¼)
CIRCLING	1540-1 418 (500-1)	1640-1 518 (600-1)	1860-2 738 (800-2)	1980-2¾ 858 (900-2¾)

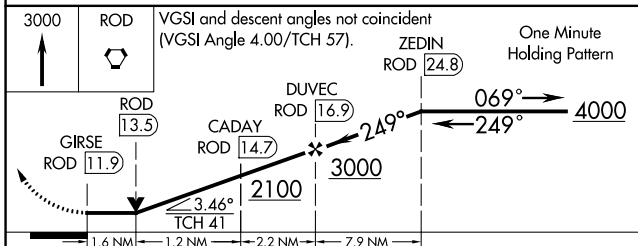
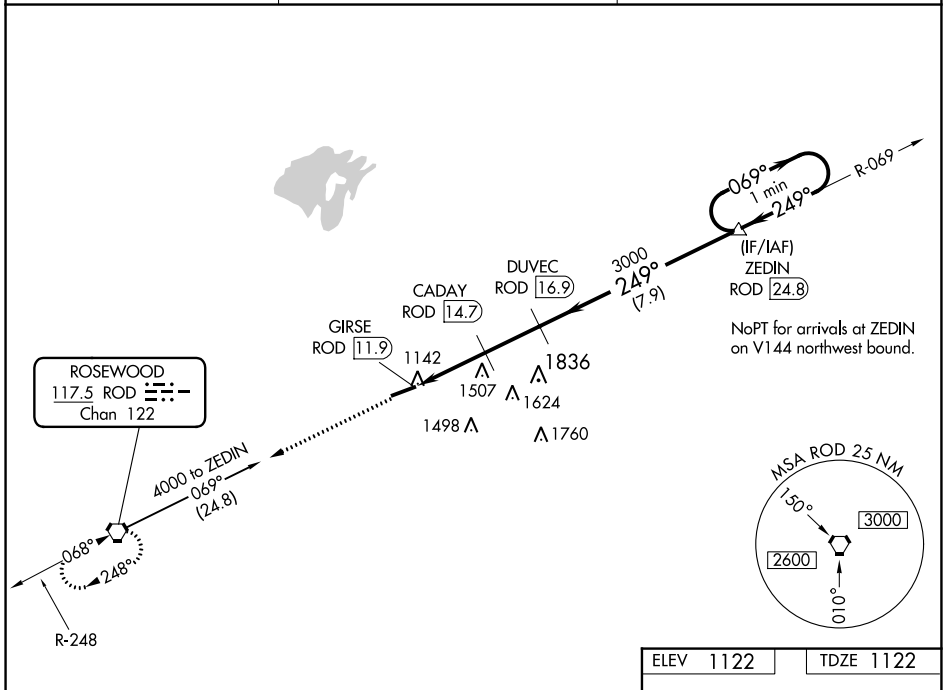
MIRL Rwy 7-25 0  
REIL Rwy 7 and 25 0

VORTAC ROD <b>117.5</b> Chan <b>122</b>	APP CRS <b>249°</b>	Rwy Idg TDZE <b>1122</b> Apt Elev <b>1122</b>	<b>5000</b>
---	------------------------	---	-------------

# VOR/DME RWY 25

BELLEFONTAINE RGNL (E.D.J)

<p><b>▽</b> Visibility reduction by helicopters NA. When local altimeter setting not received, use James M. Cox Dayton Intl altimeter setting.</p> <p><b>△</b> NA</p>	<p>MISSED APPROACH: Climb to 3000 direct ROD VORTAC and hold.</p>	
<p>AWOS-3 <b>118.075</b></p>	<p>COLUMBUS APP CON <b>118.425 294.5</b></p>	<p>UNICOM <b>122.8 (CTAF) 0</b></p>



CATEGORY	A	B	C	D
S-25	1860-1	738 (800-1)	1860-2	1860-2¼
CIRCLING	1860-1	738 (800-1)	1860-2	1980-2¾
JAMES M COX DAYTON INTL ALTIMETER SETTING MINIMUMS				
S-25	1940-1	1940-1¼	1940-2½	1940-2¾
CIRCLING	1940-1	1940-1¼	1960-2½	2080-3

ELEV 1122	TDZE 1122
-----------	-----------

MIRL Rwy 7-25 0  
REIL Rwys 7 and 25 0

EC-2, 22 FEB 2024 to 21 MAR 2024

EC-2, 22 FEB 2024 to 21 MAR 2024