

LOC I-CSV 109.1	APP CRS 255°	Rwy ldg TDZE Apt Elev	5423 1871 1882
---------------------------	------------------------	-----------------------------	---

ILS Y or LOC Y RWY 26

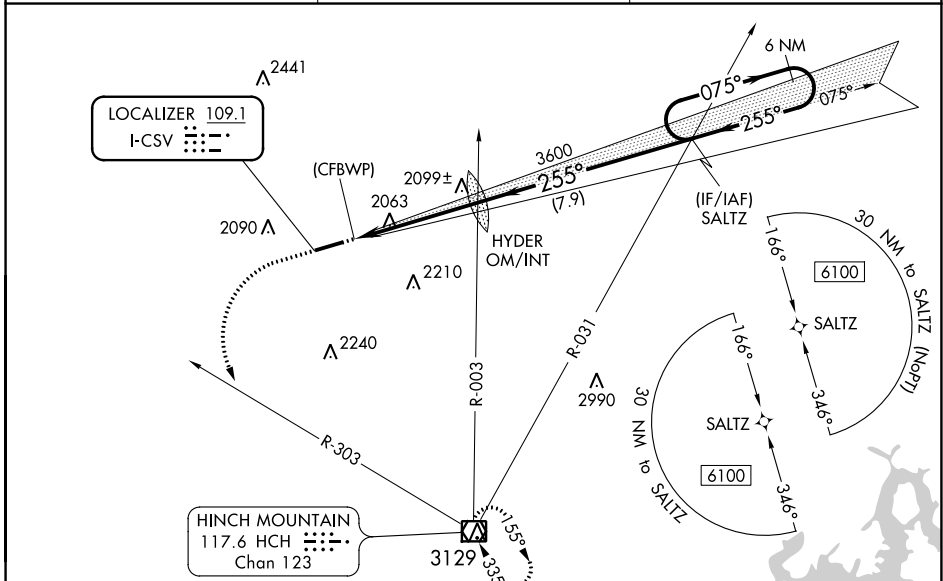
CROSSVILLE MEML-WHITSON FLD (CSV)

RNP APCH - GPS.

Autopilot coupled approach NA below 2500.
Procedure NA at night. Rwy 26 helicopter visibility reduction below 1 SM NA.

MISSED APPROACH: Climb to 3000 then climbing left turn to 5000 on heading 180° and HCH VOR/DME R-303 to HCH VOR/DME and hold.

ASOS 120.625	ATLANTA CENTER 133.6 254.3	UNICOM 122.7 (CTAF)
------------------------	--------------------------------------	-------------------------------



ELEV 1882	TDZE 1871								
<table border="1"> <tr> <td>3000</td> <td>5000</td> <td>HCH R-303</td> <td>HCH</td> </tr> <tr> <td>↑</td> <td>hdg 180°</td> <td></td> <td><input checked="" type="checkbox"/></td> </tr> </table>	3000	5000	HCH R-303	HCH	↑	hdg 180°		<input checked="" type="checkbox"/>	<p>SALTZ 6 NM Holding Pattern</p> <p>LOC unusable inside 0.5 NM.</p> <p>HYDER OM/INT 3595</p> <p>(CFBWP)</p> <p>3600</p> <p>0.5 4.7 NM 7.9 NM</p>
3000	5000	HCH R-303	HCH						
↑	hdg 180°		<input checked="" type="checkbox"/>						

REIL Rwy 26	HIRL Rwy 8-26	FAF to MAP 4.7 NM				
Knots	60	90	120	150	180	
Min:Sec	4:42	3:08	2:21	1:53	1:34	
CIRCLING	2440-1	558 (600-1)	2440-1½	558 (600-1½)	2540-2	658 (700-2)

SE-1, 22 FEB 2024 to 21 MAR 2024

SE-1, 22 FEB 2024 to 21 MAR 2024

LOC I-CSV 109.1	APP CRS 255°	Rwy ldg TDZE Apt Elev	5423 1871 1882
---------------------------	------------------------	-----------------------------	---

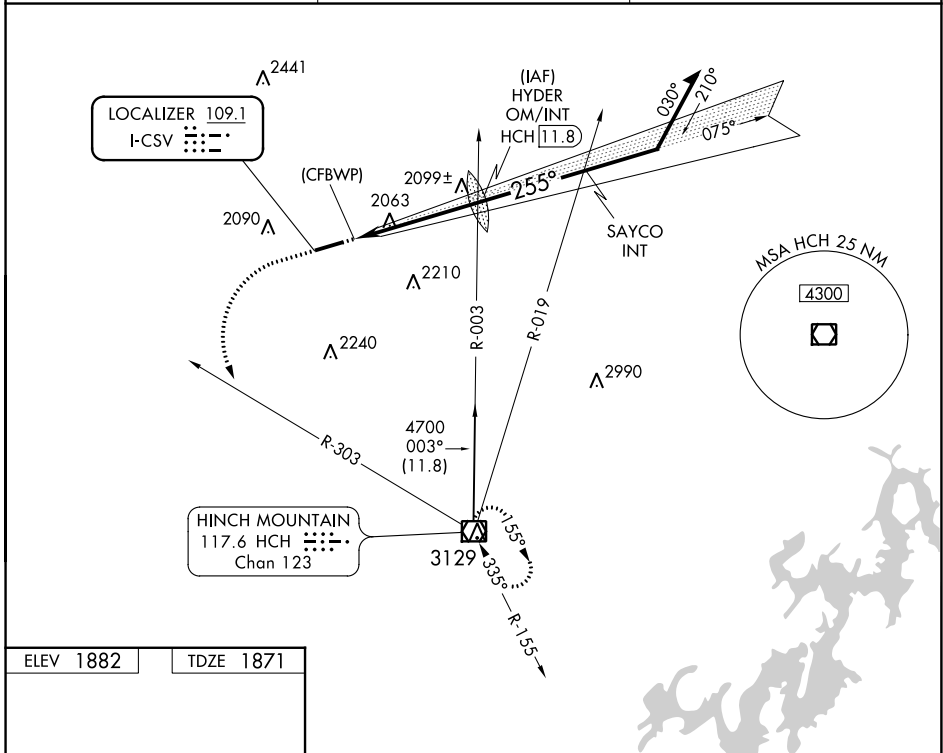
ILS Z or LOC Z RWY 26

CROSSVILLE MEML-WHITSON FLD (CSV)

Autopilot coupled approach NA below 2500. Procedure NA at night. Rwy 26 helicopter visibility reduction below 1 SM NA.

MISSED APPROACH: Climb to 3000 then climbing left turn to 5000 on heading 180° and HCH VOR/DME R-303 to HCH VOR/DME and hold.

ASOS 120.625	ATLANTA CENTER 133.6 254.3	UNICOM 122.7 (CTAF)
------------------------	--------------------------------------	-------------------------------

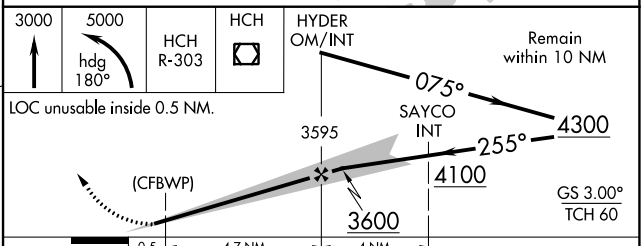


ELEV 1882	TDZE 1871
-----------	-----------

REIL RWY 26
HIRL RWY 8-26

FAF to MAP 4.7 NM

Knots	60	90	120	150	180
Min:Sec	4:42	3:08	2:21	1:53	1:34



CATEGORY	A	B	C	D
S-ILS 26	2121-1 250 (300-1)			
S-LOC 26	2440-1	569 (600-1)	2440-1½	569 (600-1½)
<input checked="" type="checkbox"/> CIRCLING	2440-1	558 (600-1)	2440-1½	2540-2 658 (700-2)

SE-1, 22 FEB 2024 to 21 MAR 2024

SE-1, 22 FEB 2024 to 21 MAR 2024

WAAS CH 65911 W26A	APP CRS 256°	Rwy Idg TDZE Apt Elev	5423 1871 1882
--	------------------------	-----------------------------	---

RNAV (GPS) RWY 26

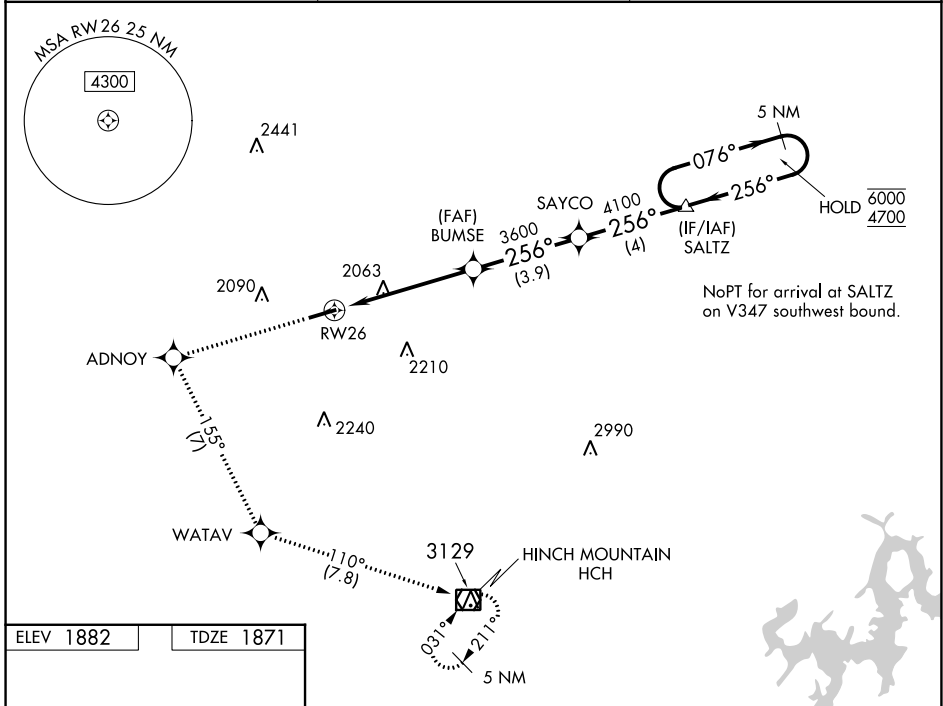
CROSSVILLE MEML-WHITSON FLD (CSV)

RNP APCH - GPS.

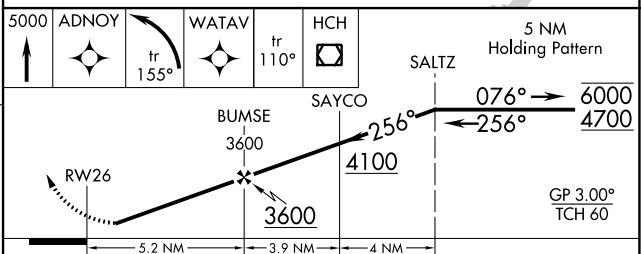
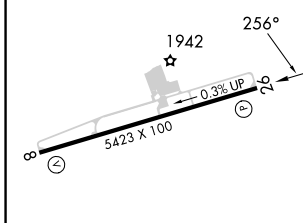
⚠ Procedure NA at night. Rwy 26 helicopter visibility reduction below 1 SM NA. For uncompensated Baro-VNAV systems, LNAV/VNAV NA below -18°C or above 54°C.

MISSED APPROACH: Climb to 5000 direct ADNOY and left turn on track 155° to WATAV and on track 110° to HCH VOR/DME and hold.

ASOS 120.625	ATLANTA CENTER 133.6 254.3	UNICOM 122.7 (CTAF) 0
------------------------	--------------------------------------	---------------------------------



ELEV 1882	TDZE 1871
-----------	-----------



CATEGORY	A	B	C	D
LPV DA	2121-1		250 (300-1)	
LNAV/VNAV DA	2170-1		299 (300-1)	
LNAV MDA	2440-1	569 (600-1)	2440-1 ⁵ / ₈	569 (600-1 ⁵ / ₈)
C CIRCLING	2440-1	558 (600-1)	2440-1 ⁵ / ₈	2540-2 658 (700-2)

REIL Rwy 26
HIRL Rwy 8-26 0

SE-1, 22 FEB 2024 to 21 MAR 2024

SE-1, 22 FEB 2024 to 21 MAR 2024

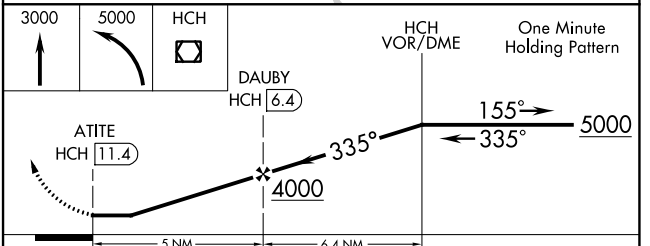
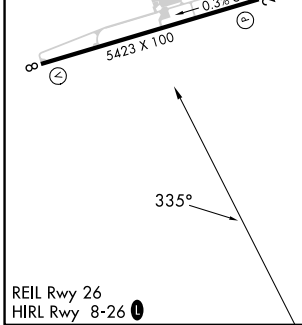
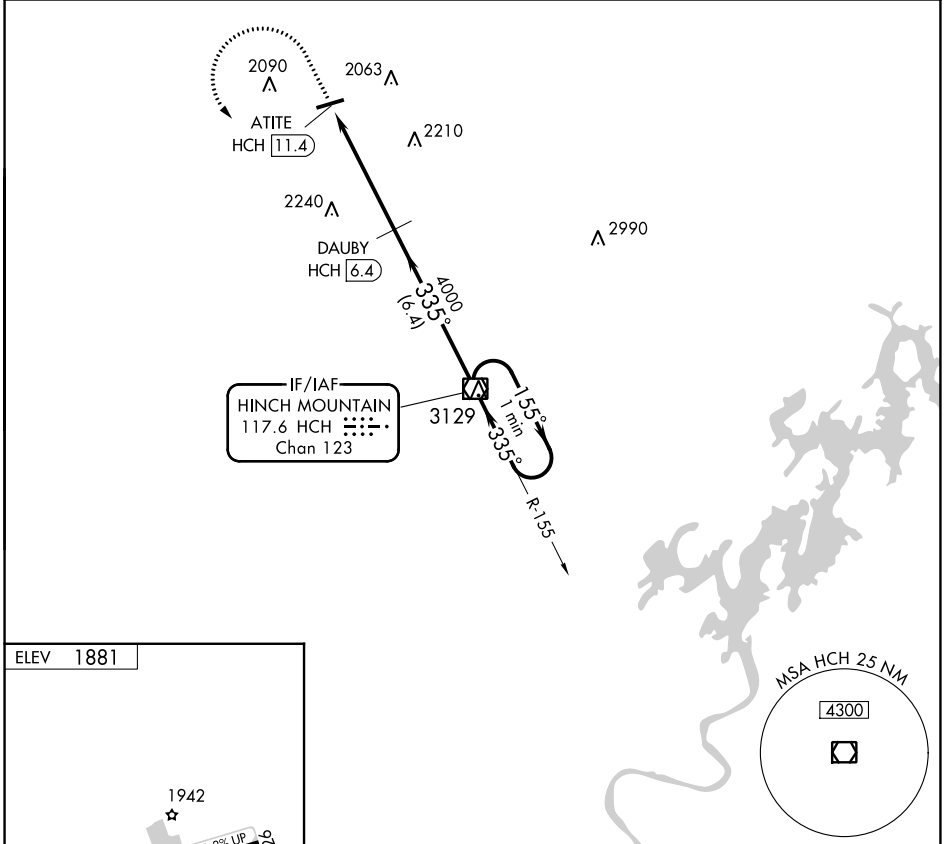
VOR/DME HCH 117.6 Chan 123	APP CRS 335°	Rwy Idg TDZE Apt Elev 1881	N/A N/A 1881
--	------------------------	---	---------------------------

VOR-A

CROSSVILLE MEML-WHITSON FLD (CSV)

NA	DME required.	MISSED APPROACH: Climb to 3000 then climbing left turn to 5000 direct HCH VOR/DME and hold.
-----------	---------------	---

ASOS 120.625	ATLANTA CENTER 133.6 254.3	UNICOM 122.7 (CTAF)
------------------------	--------------------------------------	-------------------------------



CATEGORY	A	B	C	D
C CIRCLING	2340-1	459 (500-1)	2340-1½ 459 (500-1½)	2540-2 659 (700-2)

SE-1, 22 FEB 2024 to 21 MAR 2024

SE-1, 22 FEB 2024 to 21 MAR 2024